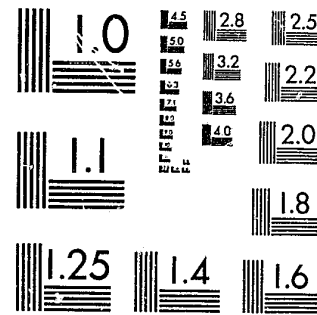


National Criminal Justice Reference Service

ncjrs

This microfiche was produced from documents received for inclusion in the NCJRS data base. Since NCJRS cannot exercise control over the physical condition of the documents submitted, the individual frame quality will vary. The resolution chart on this frame may be used to evaluate the document quality.



MICROCOPY RESOLUTION TEST CHART
NATIONAL BUREAU OF STANDARDS-1963-A

Microfilming procedures used to create this fiche comply with the standards set forth in 41CFR 101-11.504.

Points of view or opinions stated in this document are those of the author(s) and do not represent the official position or policies of the U. S. Department of Justice.

National Institute of Justice
United States Department of Justice
Washington, D. C. 20531

10/10/83

Cr. Sen +
3-12-83

NASSAU COUNTY
CRIMINAL JUSTICE COORDINATING COUNCIL

AN ANALYSIS OF CRIMINAL ACTIVITY

1976 - 1981

87170

ANDALL, ESQ.
ector

OCTOBER, 1982

Hon. FRANCIS T. PURCELL
County Executive
Member CJCC

HON. HENRY W. DWYER
Deputy County Executive
Chairman CJCC

	<u>PAGE</u>
<u>PREFACE</u>	1
Section I. A. <u>Incidence of Part I Crimes</u>	3
1. Table I Major Crime Categories 1976-1981	4
2. Table II Crime Rate per 100,000 populations	5
3. Table III Impact Crime rate per 100,000 people	7
4. Map of County of Nassau Highlighting Impact Crime Occurrence for 1981	8
B. <u>Robbery</u>	9
1. Table IV A&B Location/Method	9
2. Table V Handgun Usage	11
C. <u>Burglary</u>	12
1. Residential/Non-residential	12
2. Burglaries Per Household	13
D. <u>Incidents 1978-1981</u>	14
Analysis of Part II Incidents	15
E. <u>Clearance Rates Part I Offenses</u>	15
Table VII Clearance Rates Part I Offenses	16
II. A. <u>Incidences of Crime Type by Community</u>	18
1. Table VIII Community of Occurrence	18
2. Table VIII-A Total Criminal Incidents	24
3. Table VIII-B Incidents per 1,000 People	25
4. Table VIII-C Impact Incidents per 1,000 People	25
III. A. <u>Community of Arrestees</u>	27
1. Table IX Total Arrests	28
Juvenile Arrestees	28
Arrestee Characteristics	29
2. Table X Community of Arrestees	31
3. Table X-A Absolute Number of Arrestees by Community	37
4. Table X-B Arrests Per 1,000 Inhabitants	38
5. Table X-C Impact Arrests per 1,000 Residents by Residence of Arrestees	39
APPENDIX A. Definition of Part I Offenses	39
APPENDIX B. Ranking of Nassau Communities by Crime Occurrence	40

U.S. Department of Justice
National Institute of Justice

87170

This document has been reproduced exactly as received from the person or organization originating it. Points of view or opinions stated in this document are those of the authors and do not necessarily represent the official position or policies of the National Institute of Justice.

Permission to reproduce this copyrighted material has been granted by

Nassau County Criminal
Justice

to the National Criminal Justice Reference Service (NCJRS).

Further reproduction outside of the NCJRS system requires permission of the copyright owner.

SUMMARY OF CRIME ANALYSIS

As a result of the crime analysis undertaken by the Criminal Justice Coordinating Council a series of observations may be made from this study.

-When the crime rate for major crimes in the County of Nassau is viewed within the perspective of other large suburban and urban areas in the State it is apparent that Nassau County has the lowest crime rate for the year 1981 of all major cities/counties and its overall rate of crime is significantly below statewide average. In point of fact in 1981, total crime in Nassau, in terms of the actual number and the number of crimes per 100,000 residents decreased.

-While it is heartening to observe a lessening of the increase of overall crime, we must be cognizant of the fact that crimes of violence have increased in Nassau County. In the examination of major crimes we observed that the proportion of violent crimes has increased for the fifth consecutive year.

-We note that robberies have increased both in terms of absolute number (30.5%) and in incidents per 100,000 (30.4%).

Particularly significant was the increase in the number of gasoline station robberies in 1981 (251), which were more than twice that of 1980 (120).

-1981 continued a trend of increase in the use of handguns in robberies and, significantly, 1981 was the first year in which the use of the handgun became the most prevalent method of robbery (42.4%).

-In contrast to robbery, reported incidents of burglary decreased both in terms of absolute number and in incidents per 100,000 people.

-Of particular note this report shows that residential robberies (37 in 1969) have begun to occupy a greater percentage of the total number of robberies. (154 in 1981)

-In examining the clearance rates for robbery and burglary for Nassau County in relation to overall New York State averages we find that in Nassau County, for robberies there was a 20% clearance rate and for burglaries a 13% clearance rate. In contrast the overall New York State clearance rate for robberies was 18.5% and for burglaries a 12.2% clearance rate. Thus, the Nassau County clearance rate was above the New York State average.

-The incidence of major crime in Nassau County, as measured by Part I crimes, demonstrated a very slight increase of .7% in 1981 when compared to 1980. These seven offenses; murder, rape, robbery, assault, burglary, larceny and auto theft; have been chosen to serve as the primary indicators of

crime because they occur with sufficient frequency to provide an adequate basis for comparison and are offenses of a violent or otherwise serious nature.*

The data which was the subject of our crime analysis was provided by the New York State Division of Criminal Justice Services and the FBI's Uniform Crime Reporting System.

Reported incidence of Part II crimes, which include all other criminal offenses, decreased 3.6% from 1980 to 1981.

An Examination of the Five Year Trend in Part I Crimes

As is demonstrated in Table I; reported incidence of Part I offenses have decreased very slightly (.1%) in the five year time span since 1977. Yet while the total number of Part I offenses has decreased, our examination of the violent to property crime ratio pointedly demonstrated that the ratio has increased from .0378 to .0598. This is an increase of 63.2% in the proportion of violent crimes to property crimes over the five year time span.

*See Appendix A for further definition.

PART ONE OFFENSES

TABLE I
Nassau County*
Major Crime Categories
1976-1981

Crime	1976	1977	1978	1979	1980	1981	Percent Change 80-81	Percent Change 77-81	Percent of Total 1981
Murder **	32	30	22	34	34	47	38.2	56.7	
Rape	51	87		79	74	83	12.2	4.6	
Robbery	1,158	1,200	1,158	1,315	1,549	2,021	30.5	68.4	3.6
Assault	523	676	868	918	1,014	933	(-8.)	+38.	1.7
Violent Crime	1,764	1,993	2,346	2,346	2,671	3,084	+15.5	54.7	5.6
Burglary	11,514	12,878	12,878	12,489	15,687	15,481	(1.3)	20.2	28.3
Larceny	35,923	33,569	30,421	31,309	30,298	27,784	1.7	11.3	54.5
Auto Theft	5,769	6,256	5,863	5,901	5,565	6,275	+12.8	.3	11.4
Property Crime	53,206	52,703	48,596	49,699	51,550	51,540		(2.2)	94.3
Violent/Property Crime Ratio	.0332	.0378	.0437	.0472	.0518	.0598	15.4	63.2	
Total Crime	54,970	54,696	50,720	52,045	54,221	54,624	.7	(.1)	

*Includes data reported by Nassau County Police Department and Independent Village Police Departments.
** Includes Negligent-Non-negligent Homicide

Crimes per 100,000 People

Table II gives a graphic representation of the possibility of the average citizens being the victim of a crime in Nassau County.

TABLE II
Crime Rate Per 100,000 Population

<u>Crime</u>	<u>1980</u>	<u>1981</u>	<u>% Change</u>
Violent	202.1	234.4	+ 16
Property	3900.6	3917.4	-
Robbery	117.2	153.6	+ 31
Burglary	1187.	1176.6	(- .9)
Part I	4102.7	4151.8	+ 1.2%
Part II	3008.2	2827	(- 6%)
All Offenses	7110.9	6979	(- 1.8)
Nassau Population	*1,321,582	**1,315,685	(- .4)

* 1980 U.S. Census Data

** LILCO Estimate - 1/1/81

This year the total number of criminal offenses per 100,000 people decreased by 1.8% when compared to 1980. These findings are in contrast to the past several years when, the increase in the number of criminal incidents, coupled with decreases in the population of the county, have combined to generate yearly increases in the number of offenses per 100,000 people. The decrease in this measure may perhaps be attributed to a temporary stabilization of both these factors.

Table III demonstrates the crime rate for impact crimes* for Nassau County in comparison to other regions within New York State as provided by the New York State DCJS. The data is slightly different from the previous table due to the fact that DCJS data utilized preliminary 1980 census data for both years while the CJCC table utilizes final 1980 census data and LILCO estimates for 1981.

When the crime rate for major crimes in Nassau is viewed within the perspective of other large statistical areas in the state it is apparent that Nassau County has the lowest crime rate for the year 1981 of all major cities/counties and is significantly below the statewide average.

* Impact crimes (Robbery and Burglary) have been identified by Nassau County as crimes meriting priority consideration because of the disruption of the lives of individuals who have been victimized.

TABLE III
Crime Rate Per 100,000
IMPACT CRIME
(ROBBERY AND BURGLARY)

	<u>1977</u>	<u>1980</u>	<u>1981</u>	<u>1977-1981 Percentage Change</u>
New York City	8061.8	10094.7	10278.8	27.5
Monroe	5916.9	6989.7	6592.1	11.4
Suffolk	5435.9	6196.7	5659.6*	4.1
Onandaga/Syracuse	5178.6	5567.6	5682.4	9.7
Erie/Buffalo	4987.6	5346.8	5724.4	14.8
Westchester/Yonkers	4508.9	5021.7	5026.0	11.5
Nassau	3828.6	4108.4	4132.8	7.9
Total New York State	5873.3	6878.1	6909.7	17.6

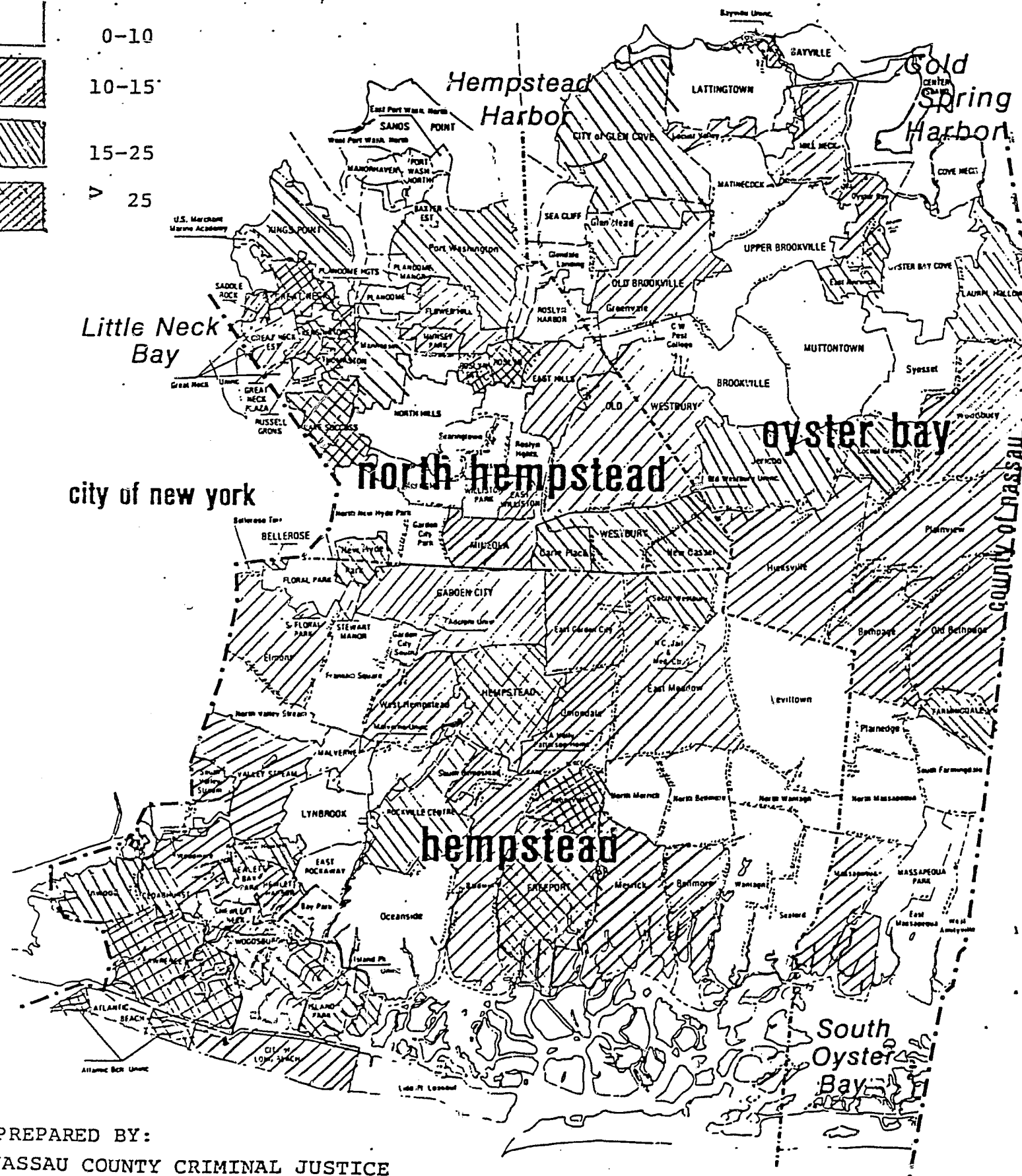
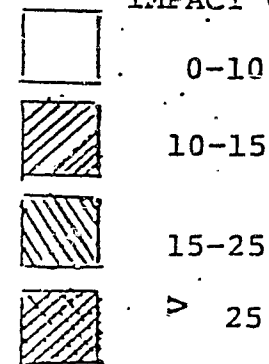
*Actual crime statistics for Suffolk County for the last four months of 1981 are unavailable and have been included on an estimated basis by the DCJS.

The following map depicts the rate of occurrence of impact crimes per 1,000 of residents in Nassau County in 1981.

IMPACT CRIMES 1981-Burglary-Robbery

KEY

IMPACT CRIMES PER 1,000



PREPARED BY:
NASSAU COUNTY CRIMINAL JUSTICE
COORDINATING COUNCIL

As stated previously, robbery is categorized with the violent Part I offenses while burglary is categorized within the property group. Observation of these two crimes in regard to their frequency of occurrence in relation to respective crime groupings demonstrates that they are divergent in this measure. Burglary continues to occupy 30% of the number of reported property offenses (25% in 1979 and 30% in 1980) while robbery now accounts for a greater percentage of violent offenses by having increased to 65.5% of that group, (in contrast to 56% in 1979 and 53% in 1980). The fact that robberies have increased in relation to the total number of violent offenses is significant in relation to the fact that violent offenses have increased also in relation to the total number of Part I offenses.

Robbery

The data cited in Table IV sets forth the locations and techniques used in the execution of the crime of robbery in Nassau County.

Table IV-A

Locations	1980	1981	% of 81 Total	80-81 Rate of Increase
Highway/Street	705	970	47.9	37.6
Gas Station	120	251	12.4	109.7
Convenience Store	148	148	7.3	
Banks	29	27	1.3	(-6)
Other Commercial	350	364	18	4
Residence	119	154	17.6	32
Miscellaneous	78	107	5.2	37
	1579	2021	100	30.5

Table IV-B

<u>Technique</u>	<u>%</u> <u>1979</u>	<u>Number of</u> <u>Robberies</u>	<u>%</u> <u>1980</u>	<u>Number of</u> <u>Robberies</u>	<u>%</u> <u>1981</u>	<u>Number of</u> <u>Robberies</u>
Handguns	36.8	485	38.5	596	42.4	857
Other Firearm	1.8	24	2.32	36	2.4	49
Knife	13.1	172	11.4	176	12	243
Other Weapon	3.3	43	2.97	46	3	61
Strong Arm*	44.9	591	44.9	695	40.1	811
	100.	1315	100.	1549	100.	2021

*Defined as those crimes committed without the use of a weapon.

The increase in the number of robberies in 1981 as compared to 1980 can be attributed to a large extent to the increase in the number of street and gasoline station robberies. As is shown in Table IV-B, the use of handguns in robberies has continued a steady increase for the past three years. Commercial robberies continue to involve use of handguns (67%), while street robberies were likely to involve strong arm techniques (57%).

Table V indicates what percentage of different forms of robbery involved the use of handguns.

Table V
Handgun Usage in Robberies

<u>Location</u>	<u>1980</u>		<u>1981</u>	
	<u>Number of</u> <u>Robberies</u> <u>Involving</u> <u>Handgun</u>	<u>Percent of</u> <u>Robberies</u> <u>Involving</u> <u>Handgun</u>	<u>Number of</u> <u>Robberies</u> <u>Involving</u> <u>Handgun</u>	<u>Percent of</u> <u>Robberies</u> <u>Involving</u> <u>Handgun</u>
Street Robberies	130	18.4	225	23.2
Gas Stations	81	67.	176	70.1
Convenience Stores	104	70.3	96	64.9
Banks	17	58.6	15	55.6
Other Commercial				
Buildings	192	54.9	243	66.8
Residence	48	40.3	73	47.4
Miscellaneous	24	30.7	29	28.8
Total	596	38.5	857	42.4

Gas Station Robberies

The dramatic increase in gas station robberies is particularly evident when the number of robberies (251) is compared with the number of gas stations (1072)*. This indicates that there was almost a one in four probability of a service station being the target of a robbery. We also note that a handgun was involved in 70% of such occurrences.

Residential Robberies

In 1981 we have witnessed an increase in the number and seriousness of residential robberies. In 1969, of 629 robberies, 37 were residential while in 1981 of 2021 robberies 154 were residential. The use of handguns in residential robberies increased 52% within the year time span of 1980-81.

*As of January 1, 1982 - Nassau County Department of Consumer Affairs.

Burglary

Burglary demonstrated a very slight decrease in 1981 (See Table I and Table II). Residential burglaries continue to be the primary form of burglary in Nassau comprising 70% of the total for burglaries reported for 1981. Of the 12,398 (80%) burglaries where the time of burglary could be ascertained 43.1% occurred in the daytime while 56.9 occurred at night. Residential burglaries were more likely to occur during the day (57.1%) while non-residential burglaries occurred at night (92%).

<u>Type</u>	<u>Burglary</u>					
	<u>Forcible Entry</u>	<u>Percent</u>	<u>No Force</u>	<u>Percent</u>	<u>Attempt Only</u>	<u>Percent</u>
Residential	9108	84.	549	5.	1179	10.8
Non-Residential	4197	90.3	133	.29	315	6.78

From the above chart we note that residential, as opposed to non-residential burglary targets have higher rates of attempted burglaries, and lower rates of forcible entry. These factors infer that a residential burglar is more easily discouraged by secure premises and more are likely to respond to a perceived opportunity for breaking in than the non-residential burglar.

Burglaries per Household

The probability of a household being the target of a burglary within a given area may be ascertained by comparing the total number of households in a given area with the total number of household burglaries occurring in that area.

(For the purpose of this analysis a household is defined as a social unit of those living together in the same dwelling). Even as the county's total population has decreased in the past several years, as a result of the more rapid decline in the number of people per average household, the number of households in the county continue to rise. While decreases in the size of average households is a national, state and local trend, the Nassau/Suffolk statistical area has the largest average size household (3.1 persons) of any of the 50 most populous metropolitan areas throughout the country.* The net result of these factors is that in 1980 there were 423,401 Nassau households and 11,023 residential burglaries, resulting in a rate of 26 burglaries per 1,000 households, while in 1981 there were approximately 425,575 households and 10,836 residential burglaries, resulting in a rate of 25.5 burglaries per 1,000 households.

*1982 LILCO POPULATION REPORT

Nassau county
Part II - Incidents
1978 - 1981

Crimes	1978	1979	1980	1981
Arson	175	231	331	339
Kidnapping	2	6	2	2
Drug Offenses	1,439	1,471	1,904	1,956
Dangerous Weapons	342	457	471	492
Bribery	3	4	6	3
Sex Offenses	310	273	271	308
Extortion	0	2	1	0
Forgery & Counterfeiting	377	443	443	519
Prostitution & Vice	29	95	68	69
Stolen Property	553	606	674	610
Coercion	0	30	0	53
Criminal Mischief	18,364	19,610	17,897	16,500
Fraud	84	105	131	177
Gambling	92	120	71	45
Public Disorder	243	212	142	164
Embezzlement	0	0	3	3
Simple Assault	1,207	1,462	1,624	1,572
Family Offenses	192	239	226	206
Driving while intoxicated	2,717	2,671	3,500	4,045
Unauthorized use of a Motor Vehicle	4,813	2,517	**	**
Possession of Burglary tools	88	57	78	86
Liquor Law Violations	45	26	40	49
Disorderly Conduct	1,322	1,583	1,590	1,385
Public Drug Intoxication	2	2	6	8
Loitering	180	156	150	147
All Others	8,285	8,075	8,960	8,255
Total	40,856	40,453	38,589	37,198

* Includes data reported by Nassau County Police Department and Independent Village Police Departments.
** MCPD no longer includes these statistics

Part II Incidents

In 1981 the Incidence of Part II crimes dropped 3.6% from the 1980 level. Criminal Mischief, including vandalism accounted for 44.2% of reported Part II crimes (46.4% in 1980). Two serious crimes that had been rising rapidly appear to have slowed their rate of increase. They are; Arson (43.3% increase in 1980 and 2.4% increase in 1981), and Drug Offenses (22.7% increase in 1980 and 2.7% increase in 1981. Concerning these offenses it should be noted that although the rate of increase of these crimes may have slowed, they continue to occupy a larger proportion than previously of the total number of Part II Offenses.

Clearance Rates Part I Offenses

An Offense is "cleared by arrest" or solved for crime reporting purposes when at least one person is arrested, charged with the commission of the offense and remanded to the courts for prosecution. Table VII examines incidence and clearance rates for Part I Crimes in Nassau County with a comparison to the New York State averages. Noticeable is the fact that statewide clearance rates for Robbery and Burglary are 18.5% and 12.2% whereas the County percentages are 20% and 13%.

TABLE VII
Clearance Rates - Part I Offenses

Crime	Number of Incidents*	Number of Clearances*	Percent of Incidents Cleared*	NY State** Incidents Cleared	
				1980	1981
Murder	47	41	87.2%	63.6	61.5
Rape	83	41	49.4	41.5	40.7
Robbery	2,021	405	20.	15.9	18.5
Assault	933	583	62.5	50.	50
Burglary	15,481	2,025	13.	12.	12.2
Larceny	29,784	3,575	12.	14.3	15.2
Motor Vehicle	6,275	368	5.9	5.9	7.1
	54,624	7,038			

*Data is for Total Nassau County and includes reported crimes and clearances from NCPD and Independent Village Police Departments.

**New York State Division of Criminal Justice Services- Annual Report (1980) (1981)

Table VIII provides a record of criminal incidence by the community of occurrence. In order to compile the number of criminal incidents per community and then compare that analysis with the appropriate geographical/demographical locale it is necessary to utilize three complete sets of source documents. The communities are those as identified by the Nassau Police Departments' location codes and are delineated as Incorporated Villages and Unincorporated statistical areas. The population data was arrived at from a LILCO estimates for Jan. 1, 1981 which in turn is based upon the April 1, 1980 census. The number of criminal incidence per community have been extrapolated from the Unifrom Crime Reports of both the Independent Police Departments and the Nassau County Police Department.

Inconsistencies evident in the comparison of the above source documents do not obscure the essential validity for their use. In some cases communities or areas may exist for the Nassau County Police Department crime reporting procedures but not have separate data for census purposes. When this occurred, several reports were analyzed and combined to obtain a "best fit" and these communities were then marked with footnotes.

TABLE VIII
1981 Incidence by Crime Type
By Community of Occurrence

INCORPORATED VILLAGE

COMMUNITY	HOMICIDE	RAPE	ROBBERY	ASSAULT	BURGLARY	LARCENY	AUTO THEFT	ARSON	NARCOTICS	OTHERS	TOTAL	POP.	FCT.
ATLANTIC BEACH	-	-	-	-	10	9	-	-	-	20	39	1785	4
BAYVILLE	-	-	-	3	45	52	-	1	2	143	246	7129	2
BELLEROSE	-	-	5	1	16	33	-	-	1	56	112	1192	3
CEDARHURST	-	-	22	15	90	176	-	-	8	339	650	6032	4
CENTRE ISLAND	-	-	-	1	2	3	2	-	2	1	11	378	2
COVE NECK	-	-	-	-	1	9	1	-	-	1	12	328	2
EAST HILLS	-	-	2	1	88	86	1	-	1	165	344	7224	6
EAST ROCKAWAY	-	-	4	11	77	177	-	-	5	293	567	10839	4
EAST WILLISTON	-	-	-	1	28	30	-	-	-	55	114	2692	3
FARMINGDALE	-	1	8	12	140	207	-	3	12	518	901	7937	8
FLORAL PARK	-	-	28	4	82	308	50	19	11	267	769	16653	3
FLOWERHILL	-	-	-	1	65	46	-	-	-	213	325	4545	6
FREEPORT	2	10	147	54	1001	1533	257	16	44	511	3575	37953	1
GARDEN CITY	-	1	18	21	253	615	66	5	24	917	1920	22816	3
GREAT NECK	-	-	3	3	49	65	-	1	4	141	266	9001	6
GREAT NECK ESTATES	-	-	1	-	40	60	6	2	1	50	160	2915	6
GREAT NECK PLAZA	-	1	8	9	88	221	-	3	2	268	600	5648	6
HEMPSTEAD	9	18	352	235	1150	2143	404	12	128	1780	6231	40577	3
HEWLETT BAY PARK	-	-	-	-	4	8	-	-	2	20	34	486	4
HEWLETT HARBOR	-	-	-	-	16	19	-	1	-	34	70	1322	4
HEWLETT NECK	-	-	-	-	6	2	-	-	-	8	16	469	4
ISLAND PARK	-	-	5	22	93	116	-	1	9	305	551	4798	4
KENSINGTON	-	-	-	-	18	9	1	-	-	11	39	1154	6
KING'S POINT	-	-	4	2	35	69	10	9	-	84	213	5310	6

TABLE VIII
1981 Incidence by Crime Type
by Community of Occurrence

INCORPORATED VILLAGE	COMMUNITY	HOMICIDE	RAPE	ROBBERY	ASSAULT	BURGLARY	LARCENY	AUTO THEFT	ARSON	NARCOTICS	OTHERS	TOTAL	POP.	PCI
LAKE SUCCESS	-	-	-	12	10	48	106	18	-	1	28	223	2332	6
LATTINGTOWN	-	1	-	-	-	9	14	-	-	-	44	68	1742	2
LAUREL HOLLOW	-	-	-	1	-	24	22	1	-	2	38	88	1584	2
LAWRENCE	-	-	-	11	15	144	260	1	2	12	409	876	6116	4
LYNDBROOK	-	-	-	20	21	191	374	67	1	14	415	1105	20156	5
MALVERNE	-	-	-	2	6	72	97	18	-	5	84	284	9195	5
MANORHAVEN	-	-	-	1	5	43	65	-	-	1	138	253	5391	6
MASSAPEQUA PARK	1	1	-	4	24	103	234	1	2	18	555	943	19865	7
MATINECOCK	-	-	-	-	-	-	-	-	-	-	-	-	990	2
MILL NECK	-	-	-	-	-	11	7	1	-	-	6	25	971	2
MINEOLA	-	2	-	15	10	206	467	-	8	23	979	1710	20728	3
MUNSEY PARK	-	-	-	2	2	38	42	-	-	2	51	137	2791	6
NEW HYDE PARK	-	1	-	20	8	61	204	-	2	-	143	679	9811	3
NORTH HILLS	-	-	-	1	1	19	42	-	-	5	170	190	1861	6
OLD BROOKVILLE	-	-	-	10	11	106	111	16	2	9	227	517	8928	2
OLD WESTBURY	-	-	-	2	5	38	70	1	-	3	53	172	3258	3
OYSTER BAY COVE	-	1	-	-	-	18	4	2	1	-	4	30	1819	2
PLANDOME	-	-	-	-	-	2	3	-	-	-	14	19	1495	6
PLANDOME HEIGHTS	-	-	-	-	-	-	-	-	-	-	-	-	979	6
PLANDOME MANOR	-	-	-	-	-	2	1	-	-	-	14	19	1186	6

TABLE VIII
1981 Incidence by Crime Type
by Community of Occurrence

INCORPORATED VILLAGE

COMMUNITY	HOMICIDE	RAPE	ROBBERY	ASSAULT	BURGLARY	LARCENY	AUTO THEFT	ARSON	NARCOTICS	ALL OTHERS	TOTAL	POP.	PCT.
PORT WASHINGTON	1	1	11	6	280	475	105	-	2	880	1761	15901	6
ROCKVILLE CENTER	1	-	34	5	446	789	139	-	7	522	1943	25299	1
ROSLYN	-	1	13	11	54	116	-	-	11	198	404	2211	6
ROSLYN ESTATES	-	-	-	-	20	9	-	-	1	18	48	782	6
ROSLYN HARBOR	-	-	1	-	7	16	-	-	-	32	56	1615	6
RUSSELL GARDENS	-	-	1	-	20	5	-	-	-	41	1269	6	
SADDLE ROCK	-	-	-	-	10	4	-	-	-	16	30	926	6
SANDS POINT	-	-	1	1	23	31	6	-	1	26	89	2729	6
SEA CLIFF	-	-	-	4	31	60	-	-	3	118	216	5346	6
SOUTH FLORAL PK.	-	-	1	2	9	13	-	1	-	35	61	1512	5
STEWART MANOR	-	-	-	2	12	25	-	-	1	43	83	2389	3
THOMASTON	-	1	2	1	79	29	-	-	-	60	172	2682	6
VALLEY STREAM	-	1	49	18	412	665	-	5	35	1384	2569	35364	5
WESTBURY	1	1	22	22	247	363	-	1	11	553	1221	13707	3
WILLISTON PARK	1	1	7	3	58	150	-	1	6	303	530	8127	3
WOODSBURGH	-	-	-	-	13	3	-	-	-	11	27	854	4
CITY OF GLEN COVE	-	2	27	50	377	404	81	1	15	561	1518	24305	2
CITY OF LONG BEACH	5	5	66	28	381	908	190	28	101	1767	3479	34140	4

FOOTNOTES

- 1 Floral Park, Floral Park Center
- 2 Garden City, Garden City (unincorporated)
- 3 Hempstead, East Hempstead
- 4 Island Park, Harbor Isle, North Long Beach
- 5 Lawrence, North Lawrence, East Lawrence
- 6 Mineola, East Mineola (unincorporated)
- 7 Old Brookville, Brookville, Muttontown, Upper Brookville
- 8 Port Washington, Port Washington North, Baxter Estates

TABLE VIII
1981 Incidence by Crime Type
By Community of Occurrence

UNINCORPORATED AREA													
COMMUNITY	HOMICIDE	RAPE	ROBBERY	ASSAULT	BURGLARY	LARCENY	AUTO THEFT	ARSON	NARCOTICS	ALL OTHERS	TOTAL	POP	PCT
ALBERTSON	-	-	3	4	32	86	-	-	3	118	246	5455	3
ATLANTIC BEACH	-	-	1	8	67	72	-	-	2	137	287	2033	4
BALDWIN	1	1	41	35	345	670	1	6	19	1285	2404	31363	1
BAY PARK	-	-	-	-	-	-	-	-	-	-	-	2339	4
BAYVILLE	-	-	-	-	20	20	-	-	-	54	94	1494	2
BELLEROSE TERRACE	-	-	4	2	14	22	-	-	-	31	73	1933	3
BELLNORE	-	1	13	19	193	372	-	3	6	733	1340	18016	7
BETHPAGE	-	1	11	15	172	307	2	2	23	822	1355	16684	8
CARLE PLACE	-	1	28	17	104	989	-	-	32	855	2026	5388	3
E. GARDEN CITY	-	-	4	8	34	169	1	6	61	213	496	2816	3
E. MEADOW	1	4	34	67	439	774	1	15	42	1561	2938	39535	3
E. MINEOLA	-	-	-	-	-	-	-	-	-	-	-	-	3
E. NORWICH	-	-	1	2	47	32	1	-	-	67	150	2781	2
ELMONT	3	1	99	59	283	595	1	10	65	1455	2571	27435	5
FRANKLIN SQUARE	1	2	26	10	189	252	-	5	13	733	1231	28784	5
GARDEN CITY PARK	-	-	8	3	59	186	-	1	-	216	473	7705	3
GARDEN CITY SOUTH	-	-	1	1	7	31	-	-	1	73	114	4224	5
GLEN HEAD	-	-	-	3	69	70	-	2	1	137	282	4519	6
GLENWOOD LANDING	-	-	-	-	11	22	-	-	-	40	73	3561	6
GREAT NECK	-	-	28	29	261	372	2	2	11	701	1406	6929	6
GREENVALE	-	-	6	2	16	57	-	-	1	85	167	759	6
HERRICKS	-	-	-	1	8	30	-	-	2	44	85	8049	3

1981 Incidence by Crime Type
By Community of Residence

UNINCORPORATED AREA

COMMUNITY	HOMICIDE	RAPE	ROBBERY	ASSAULT	BURGLARY	LARCENY	AUTO THEFT	ARSON	NARCOTICS	ALL OTHERS	TOTAL	POP.	PCT.
HEWLETT	-	-	14	7	111	209	1	-	6	450	798	6958	4
HEWLETT PT.	-	-	-	-	-	-	-	-	-	-	-	-	4
HICKSVILLE	2	2	38	27	433	961	5	7	41	1553	3069	43028	8
INWOOD	1	-	46	23	84	133	3	1	3	328	622	8288	4
JERICHO	-	1	17	8	213	258	-	2	16	459	974	12793	2
LAKEVIEW	-	-	13	10	105	51	-	-	7	175	361	5252	5
LEVITTOWN	2	1	26	54	332	761	3	3	55	1799	3036	56771	8
LIDO & POINT	-	-	-	-	-	-	-	-	-	-	-	-	-
LOOKOUT	-	-	-	10	39	74	-	-	18	166	307	4513	4
LOCUST VALLEY	-	-	2	1	39	54	-	-	-	86	182	3526	2
MALVERNE PARK	-	-	-	4	3	17	-	-	-	32	56	1212	5
MANHASSET	-	1	14	15	141	380	2	1	7	672	1233	8481	6
MASSAPEQUA	1	2	59	62	326	1461	2	8	50	2123	4094	38096	7
MERRICK	-	1	25	12	272	613	3	-	16	862	1804	24973	7
NEW CASSEL	-	2	18	39	184	107	-	2	24	350	726	9676	3
NEW HYDE PARK	1	-	39	9	190	481	-	-	9	603	1332	14872	3
NORTH BELLMORE	-	-	16	9	179	159	-	1	6	449	819	20422	7
N. MASSAPEQUA	1	-	6	11	118	178	1	1	12	408	736	21257	7
N. MERRICK	-	1	3	6	90	149	-	-	2	314	565	12771	1
N. VALLEY STREAM	-	-	9	6	77	88	-	-	8	430	618	14526	5
N. WANTAGH	-	-	-	3	26	24	-	1	2	54	110	12508	8

TABLE VIII

1981 Incidence by Crime Type
By Community of Occurrence

UNINCORPORATED AREA

COMMUNITY	HOMICIDE	RAPE	ROBBERY	ASSAULT	BURGLARY	LARCENY	AUTO THEFT	ARSON	NARCOTICS	ALL OTHERS	TOTAL	POP.	PCT.
OCEANSIDE	1	-	16	45	296	598	1	2	23	1152	2134	33439	4
OLD BETHPAGE	-	-	4	3	79	64	-	1	-	116	267	6113	8
OYSTER BAY	-	-	3	17	79	102	1	1	4	263	470	6473	2
PLAINEDGE	-	-	-	-	1	21	-	-	1	30	53	9580	8
PLAINVIEW	1	2	11	13	352	516	-	2	17	900	1814	27807	8
ROOSEVELT	4	6	88	59	387	305	-	10	12	830	1681	14104	1
ROSLYN HEIGHTS	-	-	9	10	101	119	2	-	11	244	496	6503	6
SEAFORD	-	-	11	23	116	331	-	2	21	691	1195	16029	7
SEARINGTOWN	-	-	-	2	37	40	-	-	-	58	137	4894	3
SO. FARMINGDALE	-	-	8	7	83	154	-	4	4	320	580	16466	8
SO. HEMPSTEAD	-	-	3	4	43	44	-	-	-	62	156	3205	1
SO. VALLEY STREAM	-	-	26	5	30	677	1	1	28	765	1533	5368	5
SYOSSET/	-	-	3	18	354	363	-	8	10	684	1440	13564	2
LOCUST GROVE	-	-	36	34	238	377	1	7	20	759	1475	20035	1
UNIONDALE	1	2	11	26	187	415	-	1	18	895	1555	32170	7
WANTAGH	-	-	22	11	205	366	-	-	6	502	1113	9653	3
WESTBURY	1	-	-	-	162	349	-	1	29	715	1335	18354	5
WEST HEMPSTEAD	-	1	43	35	193	200	-	1	6	318	626	7115	2
WOODBURY	1	-	2	5	93	251	1	1	3	580	1021	16917	4
WOODMERE	1	-	22	12	150	-	-	-	-	-	-	-	-

FOOTNOTES:

9. Baldwin, Baldwin Harbor, North Baldwin
 10. Hewlett, Grant Park, Hewlett Point
 11. Malverne Park, Malverne, North Lynbrook
 12. Massapequa, East Massapequa
 13. New Hyde Park (unincorporated) North New Hyde Park
 14. North Wantagh, North Seaford
 15. South Farmingdale, West Farmingdale
 16. Woodmere, North Woodmere, Meadowmere Park

Total Criminal Incidents

While there are some areas that have offense levels that are much higher than the county norm, generally crime in Nassau is a dispersed phenomenon. Indicative of this, the communities with the highest concentrations of population consistently have the highest number of reported crimes.

1981 Community Rankings			
Community	Number of Incidents	Rank in 1979	Rank in 1980
1 Hempstead	6231	1	1
2 Massapequa	4094	3	2
3 Freeport	3575	4	4
4 Long Beach	3474	2	3
5 Hicksville	3069	5	5
6 Levittown	3036	6	6
7 East Meadow	2938	7	7
8 Valley Stream	2692	10	8
9 Elmont	2571	9	9
10 Baldwin	2404	Unlisted	Unlisted

Incidents per 1,000 People

Our analysis shows that communities scoring high in crime incidents tend to be in the locations of large shopping centers with a considerable transient population.

Community*

Incidents per 1,000 people

1	Carle Place	376
2	South Valley Stream	285
3	Great Neck (Unincorporated)	202
4	Hempstead	154
5	Manhasset	145
6	Lawrence	143
7	Roosevelt	119
8	Westbury (Unincorporated)	115
9	Hewlett	115
10	Farmingdale	108

*Communities with less than 5,000 population not represented

The ten communities with the greatest number of robberies and burglaries per 1,000 residents are listed below.

Community*

Impact Crimes per 1,000 people

1	Great Neck	41.7
2	Hempstead	37
3	Roosevelt	32.3
4	Freeport	30.2
5	Lawrence	28.9
6	Carle Place	24.5
7	Lakeview	22.5
8	New Cassel	20.8
9	Westbury	19.6
10	Rockville Centre	19.

Two communities that have evidenced change in relation to the total crime picture in Nassau County are Long Beach and Great Neck. Long Beach had been consistently identified in previous analysis* as one of the county's high crime communities. There has been a gradual decrease in the number and severity of reported crimes in this city, particularly in view of the number of reported crimes per 1,000. Unincorporated Great Neck has had a rapid increase in the number of reported crimes in the last three years. Generally, this might be explained by the establishment of

*CJCC - Criminal Activity Reports, 1979-1980.

Unincorporated Great Neck

	<u>Total Burglaries</u>	<u>Residential Burglary</u>	<u>Robbery</u>	<u>Total Impact Crimes</u>	<u>Total</u>
1979	136	97	10	146	804
1980	158	111	16	174	973
1981	261	185	28	289	1406

major shopping centers and the attendant increase in transient population flow.

Of the Part II crimes, drug offenses, criminal mischief and driving while intoxicated accounted for nearly one half (48.6%) of the total arrests. Observation of Table IX will demonstrate that, over the past five years, arrests for drug offenses and driving while intoxicated have risen steadily (24.2% and 44.4%) respectively. There has also been a major increase (44.7%) in the number of persons arrested for possession of a dangerous weapon.

Age of Arrestees

The data that follows provides demographic information concerning the age of arrestees.

<u>Age Group</u>	<u>1977</u>	<u>1978</u>	<u>1979</u>	<u>1980</u>	<u>1981</u>
12 and under	263	230	298	274	255
13-15	1,662	1,615	1,848	1,761	1,594
16-19	5,483	5,774	6,309	6,165	5,444
20-24	3,672	3,864	4,337	5,118	5,134
25-29	2,117	2,262	2,435	2,949	2,949
30-39	2,297	2,432	2,633	3,107	3,200
40-49	1,343	1,269	1,247	1,421	1,493
50-59	880	819	742	798	810
60 and over	306	303	275	341	329

Study of the above table shows that there is a trend toward increasing age of arrestees. Arrests of those of the age of 20 and over, are increasing, while the arrests of those under the age of 20 years is decreasing.

Arrests

The total number of arrests (21,203) in Nassau County in 1981 decreased 3.3% from the 1980 total. (The last decrease in total number of arrests in Nassau County was in the years 1975-1976). The percentage of these arrests that were for the Part I crimes was approximately one-third (33.4%), 54.6% of the Part I arrests were for larceny (53.7 in 1979, 53.6 in 1980) while burglary accounted for another 25% (27.9 in 1979, 27.6 in 1980). While arrests for the violent crimes were 16.8 of the total of Part I crimes, the incidence of violent crimes accounted for 6% of the reported incidents of Part I crimes.

TABLE IX
TOTAL ARRESTS
BY CRIME TYPE
1977-1981

Crime	1977	1978	1979	1980	1981
Part I					
Homicide	29	20	40	49	58
Rape	42	28	38	41	48
Robbery	478	443	500	538	541
Aggravated Assault	455	490	517	555	545
Burglary	1,823	2,010	2,087	2,116	1,762
Larceny	3,892	3,495	4,010	4,107	3,865
Auto Theft	316	302	280	253	245
Sub-Total	7,035	6,788	7,490	7,659	7,070
Part II					
Arson	53	49	64	65	64
Kidnapping	0	1	8	-	0
Drug Offenses	1,534	1,429	1,489	1,854	1,906
Dangerous Weapons	283	284	374	405	421
Bribery	7	6	2	5	3
Sex Offenses	193	239	170	244	183
Extortion	3	0	0	-	3
Forgery and Counterfeiting	240	226	222	222	228
Prostitution	19	20	99	70	73
Stolen Property	589	549	645	654	635
Coercion	1	1	2	1	1
Criminal Mischief	654	762	1,037	927	868
Fraud	124	130	171	161	173
Gambling	106	126	164	99	65
Public Disorder	62	347	211	32	37
Embezzlement	0	1	0	-	1
Simple Assault	564	643	868	973	800
Family Offenses	115	91	89	63	60
Driving While Intoxicated	2,826	2,725	2,636	3,495	4,082
Unauthorized Vehicle Use	65	90	108	77	163
Burglar's Tools	10	9	6	7	39
Liquor Law Violations	16	67	26	41	32
Disorderly Conduct	573	753	873	709	596
Public Narcotic Intox	2	2	1	7	1
Loitering	34	62	17	26	89
All Other	2,875	3,168	3,352	3,953	3,598
Sub-Total	11,048	11,780	12,634	14,275	14,138
TOTAL	18,083	18,568	20,124	21,934	21,208

* Includes Murder, Non-negligent and Negligent Manslaughter

Significantly, the percentage of those arrested for Part I crimes who are under the age of 16 has decreased in 1981.

Juvenile Arrestees for
Part I Offenses

	77	78	79	80	81
Less than 16	16.4	16.9	17.2	16.2	14.5

Further analysis of arrestee characteristics indicates that the percentage of the total that are males has remained fairly constant. In terms of race the percentage of those arrested who are white is decreasing slowly, while the percentage who are black is increasing correspondingly.

CHARACTERISTIC

Sex	78	79	80	81
Male	15,900	17,102	18,826	18,643
Female	2,658	3,022	3,108	3,118
Race				
White	13,420	14,393	14,861	13,360
Black	5,088	5,686	6,179	6,171
Indian	8	9	1	4
Asian	24	15	62	37

A separate analysis of community of arrestee's residence was completed for 1981. Data for arrests made by the Nassau County Police Department was prepared by that department, while data for arrests made by local police departments was "abstracted" by the Criminal Justice Coordinating Council from the FBI Uniform Crime Reports. The UCR's, as presently filed by independent police departments, do not include information as to the residence of arrestees. For the purposes of this report we are considering

all arrestees apprehended by independent police departments as residing in those communities in which they were apprehended. This will tend to increase the apparent number of arrestees residing in communities with independent police departments.

Table X provides a chart of arrests by the community of arrestees residence and by the community where the crime was committed.

Table X
1981 Incidence by Crime Type
By Community of Arrested Residence

INCORPORATED VILLAGE

COMMUNITY	HOMICIDE	RAPE	ROBBERY	ASSAULT	BURGLARY	LARCENY	AUTO THEFT	ARSON	NARCOTICS	ALL OTHERS	TOTAL	POP.	PCT.
ATLANTIC BEACH	-	-	-	2	5	-	-	-	2	10	19	1785	4
BAYVILLE	-	-	-	6	3	15	-	2	5	25	56	7129	3
BELLEROSE	1	-	-	1	1	5	-	-	5	12	25	1192	3
CEDARHURST	-	-	3	4	3	6	-	-	6	33	55	6032	4
CENTRE ISLAND	-	-	-	-	-	-	-	-	2	7	9	378	2
COVE NECK	-	-	-	-	-	1	-	-	-	1	2	328	2
EAST HILLS	-	-	-	-	-	1	-	-	1	9	11	7224	6
EAST ROCKAWAY	-	-	-	7	14	13	-	1	6	65	106	10839	4
EAST WILLISTON	-	-	-	-	-	-	-	-	2	5	7	2692	3
FARMINGDALE	-	-	6	7	18	34	-	1	28	97	191	7937	8
FLORAL PARK ¹	-	-	9	5	29	30	-	-	23	172	268	16653	3
FLOWERHILL	-	-	-	-	-	-	-	-	-	4	4	4545	6
FREEPORT	15	11	95	102	266	303	-	9	143	689	1633	37953	1
GARDEN CITY ²	-	1	15	8	22	90	-	1	38	177	352	22816	3
GREAT NECK	-	1	-	5	9	11	-	1	8	54	89	3001	6
GREAT NECK ESTATES	-	-	1	-	7	1	1	-	1	4	15	2915	6
GREAT NECK PLAZA	-	-	-	-	1	-	-	-	-	5	6	3468	6
HEMPSTEAD ³	18	15	137	173	331	669	8	3	231	1531	3116	40577	3
HEWLETT BAY PARK	-	-	-	-	-	-	-	-	-	1	1	486	4
HEWLETT HARBOR	-	-	-	1	-	1	-	1	-	3	6	1322	4
HEWLETT NECK	-	-	-	-	-	-	-	-	-	-	-	469	-
ISLAND PARK ⁴	-	-	2	26	18	25	-	-	7	58	136	4798	4
KENSINGTON	-	-	-	-	3	-	-	-	-	2	5	1154	6
KING'S POINT	-	-	-	2	6	5	-	-	-	21	34	5310	6

INCORPORATED VILLAGE

Table K
1981 Incidence by Crime Type
by Community of Arrested Residence

COMMUNITY	HOMICIDE	RAPE	ROBBERY	ASSAULT	BURGLARY	LARCENY	AUTO THEFT	ARSON	NARCOTICS	ALL OTHERS	TOTAL	POP.	PER
LAKE SUCCESS	-	-	1	1	10	6	-	-	2	8	24	2112	6
LATTINGTOWN	-	-	-	-	-	1	-	-	-	2	3	1742	2
LAUREL HOLLOW	-	-	-	1	1	5	-	-	1	21	29	1584	2
LAWRENCE ⁵	-	-	1	2	1	8	-	-	4	27	43	6116	4
LYNBROOK	-	-	4	27	48	43	1	-	46	220	389	20156	5
MALVERNE	-	-	1	2	9	4	-	-	5	48	69	9195	5
MANORHAVEN	-	-	-	-	2	1	-	-	-	15	18	5391	6
MASSAPEQUA PARK	1	-	4	12	22	21	-	-	16	135	211	19865	7
MATINECOCK	-	-	-	-	-	-	-	-	-	-	-	990	2
MILL NECK	-	-	-	1	-	3	-	-	1	4	9	973	2
MINEOLA ⁶	-	-	3	12	10	15	-	-	10	115	165	20728	1
MUNSEY PARK	-	-	-	-	-	-	-	-	2	3	5	2793	6
NEW HYDE PARK	1	-	3	5	10	17	-	-	1	46	83	9811	3
NORTH HILLS	-	-	-	-	-	-	-	-	-	1	1	1863	6
OLD BROOKVILLE ⁷	1	-	-	5	11	14	-	2	11	126	170	8928	2
OLD WESTBURY	1	-	2	1	2	4	-	-	4	38	52	3258	3
OYSTER BAY COVE	-	-	-	-	1	3	-	-	-	5	9	1819	2
PLANDOME	-	-	-	-	-	-	-	-	-	7	7	1495	6
PLANDOME HEIGHTS	-	-	-	-	-	-	-	-	-	-	-	979	6
PLANDOME MANOR	-	-	-	-	-	-	-	-	-	-	-	886	6

Table X
1981 Incidence by Crime Type
By Community of Residence

INCORPORATED VILLAGE													
COMMUNITY	HOMICIDE	RAPE	ROBBERY	ASSAULT	BURGLARY	LARCENY	AUTO THEFT	ARSON	NARCOTICS	ALL OTHERS	TOTAL	POP.	PCT.
PORT WASHINGTON ⁸	-	1	2	2	25	20	1	-	2	172	225	15901	6
ROCKVILLE CENTER	2	-	13	10	35	103	-	-	20	201	384	25299	1
ROSLYN	-	-	-	-	5	-	-	-	6	25	36	2211	6
ROSLYN ESTATES	-	-	-	-	1	1	-	-	1	3	6	782	6
ROSLYN HARBOR	-	-	-	2	-	1	-	-	-	-	3	1615	6
RUSSELL GARDENS	-	-	-	-	-	-	-	-	-	-	-	1269	6
SADDLE ROCK	-	-	-	-	-	-	-	-	-	1	1	926	6
SANDS POINT	-	-	-	1	5	4	1	-	1	25	37	2729	6
SEA CLIFF	-	-	2	1	1	2	-	1	3	30	42	5346	6
SOUTH FLORAL PK.	-	-	1	2	1	1	-	1	6	13	25	1512	5
STEWART MANOR	-	-	1	1	1	-	-	-	3	9	15	2389	3
THOMASTON	-	-	-	1	1	-	-	-	-	4	6	2682	6
VALLEY STREAM	1	-	1	15	30	23	-	1	13	138	222	35364	5
WESTBURY	1	-	2	7	13	26	-	-	5	55	109	13707	3
WILLISTON PARK	1	-	1	3	15	5	-	-	3	51	79	8127	3
WOODSBURGH	-	-	-	-	-	-	-	-	-	1	1	854	4
CITY OF GLEN COVE ⁹	1	4	40	15	79	64	4	5	32	247	491	24305	2
CITY OF LONG BEACH	8	-	21	30	82	214	2	9	97	936	1399	34140	4

FOOTNOTES

- ¹Floral Park, Floral Park Center
- ²Garden City, Garden City (unincorporated)
- ³Island Park, East Hempstead
- ⁴Island Park, Harbor Isle, N. Long Beach
- ⁵Lawrence, N. Lawrence, E. Lawrence
- ⁶Minerals, East Minerals (unincorporated)
- ⁷Old Brookville, Brookville, Muttontown, Upper Brookville
- ⁸Port Washington, Port Washington North, Ruxton Estates
- ⁹City of Glen Cove-Data Incomplete

Table X
1901 Incidence By Crime Type
By Community of Arrestee Residence

UNINCORPORATED AREA										ALL		TOTAL	POP.	PCT
COMMUNITY	HOMICIDE	RAPE	ROBBERY	ASSAULT	BURGLARY	LARCENY	AUTO THEFT	ARSON	NARCOTICS	OTHERS				
ALBERTSON	-	-	3	2	8	4	-	-	5	33	55	5465	3	
ATLANTIC BEACH	-	-	-	3	3	-	-	-	2	12	20	2033	4	
BALDWIN ¹⁰	2	-	4	17	25	38	-	1	18	159	264	31363	1	
BAY PARK	-	-	-	-	1	-	-	1	-	4	5	2339	4	
BAYVILLE	-	-	-	-	-	-	-	-	1	-	2	494	2	
BELLEROSE TERRACE	-	-	-	-	-	-	-	-	-	1	1	1933	3	
BELLMORE	-	-	-	12	19	22	-	-	16	108	177	18016	7	
BETHPAGE	1	1	4	7	18	16	-	1	22	129	199	16684	8	
CARLE PLACE	-	-	-	1	6	6	-	-	1	17	31	5388	3	
E. GARDEN CITY	-	-	-	-	2	-	-	-	-	-	2	2816	3	
E. MEADOW	2	1	3	14	31	25	-	2	25	174	277	39535	3	
E. MINEOLA	-	-	-	-	-	-	-	-	-	-	-	-	3	
E. NORWICH	1	-	-	1	4	2	-	-	-	15	23	2781	2	
ELMONT	1	2	17	25	30	51	-	3	38	225	392	27435	5	
FRANKLIN SQUARE	1	3	4	4	6	18	-	2	15	89	142	28784	5	
GARDEN CITY PARK	-	-	2	2	7	6	-	-	-	17	34	7705	3	
GARDEN CITY SOUTH	-	-	-	2	1	2	-	-	-	12	17	4224	5	
GLEN HEAD	-	-	-	3	69	70	-	2	1	137	282	4519	6	
GLENWOOD LANDING	-	-	-	2	3	5	1	1	2	19	33	3561	6	
GREAT NECK	1	-	4	16	17	28	-	1	5	89	161	6929	6	
GREENVALE	-	-	-	1	-	-	-	-	1	10	12	759	6	
HERRICKS	-	-	-	-	-	-	-	-	-	-	-	8049	3	

Table X
1981 Incidence by Crime Type
By Community of Arrest or Residence

UNINCORPORATED AREA

COMMUNITY	HOMICIDE	RAPE	ROBBERY	ASSAULT	BURGLARY	LARCENY	AUTO THEFT	ARSON	NARCOTICS	ALL OTHERS	TOTAL	POP.	PCT.
HEWLETT 11	1	-	-	3	3	19	-	-	2	36	64	6958	4
HEWLETT PT.	-	-	-	-	-	-	-	-	-	-	-	-	4
HICKSVILLE	1	-	8	15	27	50	-	1	29	241	372	43028	8
INWOOD	1	-	9	25	14	35	-	-	11	70	166	8288	4
JERICO	1	-	-	3	4	10	-	-	6	30	54	12793	2
LAKEVIEW	-	-	7	9	23	12	-	-	7	40	98	5252	5
LEVITTOWN	6	-	6	50	83	71	-	2	68	471	757	56771	8
LIDO & POINT	-	-	-	1	-	5	-	-	-	9	15	4513	4
LOOKOUT	-	-	-	-	-	-	-	-	-	-	-	-	-
LOCUST VALLEY	1	-	-	1	3	5	-	-	-	21	31	3526	2
MALVERNE PARK 12	-	-	-	-	-	-	-	-	-	1	1	1212	5
MANHASSET	-	-	2	12	8	11	1	-	-	58	92	8481	6
MASSAPEQUA 13	2	1	5	30	33	5	-	2	43	387	508	38096	7
MERRICK	-	-	2	8	21	22	-	1	-	103	157	24373	7
NEW CASSEL	-	4	4	16	33	68	-	-	25	131	281	9676	3
NEW HYDE PARK 14	-	-	4	4	7	20	-	1	7	46	89	14872	3
NORTH BELLMORE	-	-	2	2	20	23	-	-	7	67	121	20422	7
N. MASSAPEQUA	-	-	2	7	17	18	-	3	9	92	148	21257	7
N. MERRICK	-	-	2	8	21	22	-	1	10	93	157	12771	1
N. VALLEY STREAM	-	-	1	2	10	13	-	-	3	63	92	14526	5
N. WANTAGH 15	-	-	-	-	-	1	-	-	1	1	3	12508	8

UNINCORPORATED AREA

Table X
1981 Incidence by Crime Type
by Community of Arrested Residence

COMMUNITY	HOMICIDE	RAPE	ROBBERY	ASSAULT	BURGLARY	LARCENY	AUTO THEFT	ARSON	NARCOTICS	ALL OTHERS	TOTAL	POP.	PCT.
OCEANSIDE	4	2	3	21	35	45	-	-	26	154	290	33439	4
OLD BETHPAGE	-	-	-	5	2	5	-	-	-	16	28	6113	8
OYSTER BAY	-	-	2	7	18	8	-	-	6	43	84	6473	2
PLAINEDGE	-	-	-	-	1	2	-	-	-	3	6	9580	8
PLAINVIEW	1	-	1	9	9	42	-	2	17	109	190	27807	8
ROOSEVELT	2	2	30	62	90	145	-	2	20	260	613	14104	1
ROSLYN HEIGHTS	-	-	5	8	6	8	-	-	4	25	56	6503	6
SEAFORD	-	1	-	16	18	24	-	-	15	142	216	16029	7
SEARINGTOWN	-	-	-	-	-	1	-	-	1	4	6	4894	-
SO. FARMINGDALE 16	-	-	1	4	5	9	-	-	3	36	58	16466	8
SO. HEMPSTEAD	-	-	-	2	3	1	-	-	2	8	16	3205	1
SO. VALLEY STREAM	-	-	2	4	1	3	-	-	2	19	31	5368	5
SYOSSET/	-	-	-	-	-	-	-	-	-	-	-	-	-
LOCUST GROVE	1	-	-	12	16	32	-	3	13	105	182	13564	2
UNIONDALE	3	1	15	30	33	51	1	4	14	139	291	20035	1
WANTAGH	-	-	-	-	-	1	-	-	1	1	3	32170	7
WESTBURY	-	2	12	27	29	102	-	-	22	171	365	9653	3
WEST HEMPSTEAD	-	1	1	17	18	20	-	-	20	115	192	18354	5
WOODBURY	-	-	1	1	4	3	-	-	4	29	42	7115	2
WOODMERE 17	-	-	1	6	4	12	-	-	9	33	65	16917	4

FOOTNOTES

- 10Baldwin, Baldwin Harbor, North Baldwin
- 11Hewlett, Grant Park, Hewlett Point
- 12Malverne Park, Malverne, North Lynbrook
- 13Massapequa, East Massapequa
- 14New Hyde Park (unincorporated) North New Hyde Park
- 15North Wantagh, North Seaford
- 16South Farmingdale, West Farmingdale
- 17Woodmere, North Woodmere, Meadowmere Park

Community of Arrestee

The ten communities with the greatest number of arrests
in 1981 are:

<u>Rank</u>	<u>Community</u>	<u>Number of Arrests</u>
1	Hempstead	3116
2	Freeport	1633
3	Long Beach	1399
4	Levittown	754
5	Roosevelt	613
6	Massapequa	508
7	Glen Cove	491
8	Elmont	396
9	Lynbrook	389
10	Rockville Centre	384

The ten communities with the highest arrest rates per 1,000 residents are:

<u>Rank</u>	<u>Community</u>	<u>Arrests per 1,000 people</u>
1	Hempstead	76.8
2	Roosevelt	43.5
3	Freeport	43
4	Long Beach	41
5	Westbury (Unincorporated)	37.8
6	New Cassel	29
7	Farmingdale	24
8	Great Neck (Unincorporated)	23.2
9	Glen Cove	20.2
10	Lynbrook	19.2

In view of the communities with the highest percentage of impact crime arrests, it is apparant that these communities, rather than being characterized by the relatively greater size of the community, as in the case of the communities with the greatest absolute number of arrests, are unified in that they share generally lower economic levels.

The ten communities with the greatest number of persons arrested for Impact crimes per 1,000 residents are as follows:

<u>Community</u>	<u>Impact Crimes per 1,000</u>
1 Hempstead	11.5
2 Freeport	9.5
3 Roosevelt	8.4
4 Lakeview	5.7
5 Glen Cove	4.9
6 Westbury (Unincorp)	4.2
7 New Cassel	3.8
8 Great Neck (Unincorp)	3.3
9 Long beach	3.0
10 Inwood	2.7

APPENDIX A

PART. I OFFENSES

1a. Murder and Non-Negligent Manslaughter.

1b. Negligent Manslaughter.

2. Rape:

Forcible Rape.
Attempted Forcible Rape.

3. Robbery:

Handgun.
Other Firearm.
Knife or Cutting Instrument.
Other Dangerous Weapon.
Strong-Arm.

4. Assault:

Handgun.
Other Firearm.
Knife or Cutting Instrument.
Other Dangerous Weapon.
Strong-Arm.

5. Burglary:

Forcible Entry.
Unlawful Entry - no force.
Attempted Forcible Entry.

6. Larceny-Theft (except motor vehicle theft).

7. Motor Vehicle Theft:

Automobiles.
Trucks and Buses.
Other Vehicles.

Following is a table showing the rank order of Nassau County communities in terms of the number of crimes committed per 1,000 inhabitants per community and the number of Impact Crimes (Robbery, Burglary) committed per 1,000 inhabitants per community.

APPENDIX B

1981

Listing is comprised of 126 communities

Community						
Incorporated Village	Number of Crimes	Rank	Crimes Per 1,000	Rank	Impact Crime Per 1,000	Rank
Atlantic Beach	39	102	22	104	5.6	98
Bayville	246	71	34	95	6.3	92
Bellerose	112	84	94	24	17.6	28
Cedarhurst	650	46	108	17	18.6	20
Centre Island	11	113	29	101	5.3	102
Cove Neck	12	112	37	90	3	106
East Hills	344	62	48	74	12.4	56
East Rockaway	567	53	52	68	7.5	87
East Williston	114	83	42	83	10.4	69
Farmingdale	901	39	113	15	18.6	21
Floral Park	769	43	46	77	6.6	90
Flower Hill	344	63	70	47	14.3	43
Freeport	3575	4	94	23	30.2	6
Garden City	1920	14	84	30	11.8	61
Great Neck Inc.	266	69	30	100	5.8	97
Great Neck Estates	160	79	55	62	14	44
Great Neck Plaza	600	51	106	20	17	30
Hempstead	6231	1	154	8	37	3
Hewlett Bay Park	34	103	70	49	8.2	81
Hewlett Harbor	70	93	53	66	12.1	59
Hewlett Neck	16	110	34	95	12.8	54
Island Park	551	55	115	13	20.4	17
Kensington	39	101	34	95	15.6	36
Kings Point	213	74	40	87	18.3	23
Lake Success	223	72	96	22	25.7	11
Lattingtown	68	94	39	88	5.2	103
Laurel Hollow	88	88	56	61	15.8	34
Lawrence	876	40	143	10	28.9	10
Lynbrook	1105	36	55	63	5.8	99
Malverne	284	66	31	99	80	83

APPENDIX B

Community

Incorporated Village	Number of Crimes	Rank	Crimes Per 1,000	Rank	Impact Crime Per 1,000	Rank
Malverne	284	66	31	99	80	83
Manorhaven	253	70	47	75	81	82
Massapequa Park	943	38	47	75	5.4	101
Matinecock						
Mill Neck	25	107	26	103	11.3	64
Mineola	1730	18	83	31	10.7	68
Munsey Park	137	82	49	71	14.3	42
New Hyde Park	639	47	65	52	8.3	80
North Hills	198	75	106	20	10.7	68
Old Brookville	517	57	58	60	13	53
Old Westbury	172	77	53	67	12.3	58
Oyster Bay Cove	30	105	16	107	9.9	73
Plandome	19	109	19	108	1.4	112
Plandome Heights	-	-	-	-	-	-
Plandome Manor	19	108	21	105	2.2	109
Port Washington	1761	17	110	16	18.3	24
Rockville Center	1943	13	77	34	19	19
Roslyn	404	60	182	6	30	7
Roslyn Estates	48	99	61	57	25.6	12
Roslyn Harbor	56	96	35	93	5	105
Russell Gardens	41	100	32	98	16.5	33
Saddle Rock	30	104	32	97	10.8	67
Sands Point	89	87	33	96	8.8	77
Sea Cliff	216	73	40	86	5.8	97
So. Floral Park	61	95	40	84	6.6	89
Stewart Manor	83	90	35	92	5	104
Thomaston	172	77	64	54	30	3
Valley Stream	2692	8	76	35	13	50
Westbury	1221	32	89	27	19.6	18
Williston Park	530	56	65	53	8	84
Woodsburgh	27	106	32	97	15.2	39
City of Glen Cove	1518	22	62	55	16.6	32
City of Long Beach	3479	3	102	21	13	51

APPENDIX B

Ranking of Nassau Communities by
Crime Occurrence

Community	Number of Crimes	Rank	Crimes Per 1,000	Rank	Impact Crime Per 1,000	Rank
Unincorporated Areas						
Albertson	246	71	45	78	6.4	91
Atlantic Beach	287	65	141	11	33.4	4
Baldwin	2404	10	77	33	12.3	57
Bay Park						
Bayville	94	86	190	5	40.5	2
Bellerose Terrace	73	92	38	89	9.3	75
Bellmore	1340	27	74	42	11.4	63
Bethpage	1355	26	81	32	10.9	66
Carle Place	2026	12	376	1	24.5	13
E. Garden City	496	58	176	7	13.5	47
E. Meadow	2938	7	74	41	12	60
E. Mineola						
E. Norwich	150	81	54	64	17.2	29
Elmont	2571	9	94	25	13.9	45
Franklin Square	1231	31	43	81	7.5	86
Garden City						
Garden City Park	470	59	61	58	8.7	78
Garden City South	114	83	27	102	1.9	111
Glen Head	282	67	62	56	15.3	38
Glenwood Landing	73	91	20	106	3	107
Great Neck	1406	25	202	4	41.7	1
Greenvale	167	78	220	3	29	9
Herricks	85	89	10	109	1	113
Hewlett	798	42	115	14	18	26
Hewlett Pt.						
Hicksville	3069	5	71	48	10.9	66
Inwood	622	49	75	39	15.9	35
Jericho	974	37	76	36	18	27
Lakeview	346	61	66	50	22.5	15
Levittown	3036	6	53	65	6.3	93

APPENDIX B

Community	Number of Crimes	Rank	Crimes Per 1,000	Rank	Impact Crimes Per 1,000	Rank
Unincorporated Areas						
Lido/Pt. Lookout	307	64	52	70	8.6	79
Locust Valley	182	76	52	69	11.6	62
Malverne Park	56	97	46	76	2.5	108
Manhasset	1233	30	145	9	18.3	22
Massapequa	4094	2	107	18	10.1	72
Merrick	1804	16	88	28	14.5	40
New Cassel	726	45	75	38	20.8	16
New Hyde Park	1332	29	90	26	15.4	37
North Bellmore	819	41	40	85	9.5	74
N. Massapequa	736	44	35	94	5.8	96
N. Merrick	565	94	44	80	7.3	88
N. Seaford						
N. Valley Stream	618	50	42	82	5.9	95
N. Wantagh	110	85	9	110	2	110
Oceanside	2134	11	64	54	9.3	76
Old Bethpage	267	68	44	79	13.6	47
Oyster Bay	470	58	73	46	12.7	55
Plainedge	53	98	5	111	-	114
Plainview	1814	15	65	51	13	51
Roosevelt	1681	19	119	12	32.4	5
Roslyn						
Roslyn Heights	496	58	76	37	16.9	31
Seaford	1195	33	75	40	7.9	85
Searingtown						
So. Farmingdale	580	52	35	91	5.5	100
So. Hempstead	156	80	49	72	14.4	41
So. Valley Stream	1533	21	285	2	10.4	70
Syosset	1440	24	74	44	18.2	25
Uniondale	1475	23	74	43	13.7	46
Wantagh	1555	20	48	73	6.1	94
Westbury	1113	34	115	13	23.5	14
W. Hempstead	1335	28	73	45	11.2	65
Woodbury	629	48	88	29	13.4	49
Woodmere	1021	34	60	59	10.2	71

END