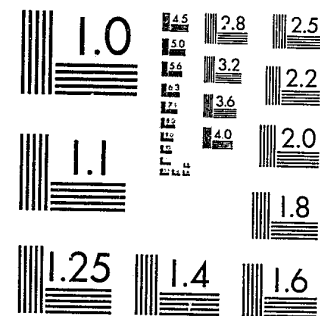


National Criminal Justice Reference Service

**ncjrs**

This microfiche was produced from documents received for inclusion in the NCJRS data base. Since NCJRS cannot exercise control over the physical condition of the documents submitted, the individual frame quality will vary. The resolution chart on this frame may be used to evaluate the document quality.



MICROCOPY RESOLUTION TEST CHART  
NATIONAL BUREAU OF STANDARDS-1963-A

Microfilming procedures used to create this fiche comply with the standards set forth in 41CFR 101-11.504.

Points of view or opinions stated in this document are those of the author(s) and do not represent the official position or policies of the U. S. Department of Justice.

National Institute of Justice  
United States Department of Justice  
Washington, D. C. 20531

8/4/83

CR-Sent  
6-10-83



THE CHIEF OF POLICE • COUNTY OF HAWAII



# 1981-82 Annual Report

88163



NCJRS  
FEB 21 1982  
ACQUISITIONS

**THE  
HAWAII  
COUNTY  
POLICE  
DEPARTMENT**

**ANNUAL REPORT  
1981-82**

U.S. Department of Justice  
National Institute of Justice

88163

This document has been reproduced exactly as received from the person or organization originating it. Points of view or opinions stated in this document are those of the authors and do not necessarily represent the official position or policies of the National Institute of Justice.

Permission to reproduce this copyrighted material has been granted by  
Hawaii County Police Department

to the National Criminal Justice Reference Service (NCJRS).

Further reproduction outside of the NCJRS system requires permission of the copyright owner.



Dr. Leila Kanno  
Chairman



HAWAII COUNTY  
POLICE COMMISSION  
349 KAPIOLANI STREET  
HILO, HAWAII 96720



Honorable Herbert T. Matayoshi  
Mayor, County of Hawaii  
25 Aupuni Street  
Hilo, Hawaii 96720

Dear Mayor Matayoshi:

We are pleased to submit the 1981-1982 report of the Hawaii Police Department.

As a Commission, we have participated in a wide variety of matters, among these the development of a policy on the release of information to the media with regard to sexual assault cases, and the review of the Rules and Regulations and Policy Statements governing the operations of the Commission. In our actions, we have tried to be responsive and responsible to both the community and the Department. We hope that we have even in some small measure succeeded.

We thank you and those of your Administration for the support we have received.

Sincerely,

*Leila Kanno*

Leila Kanno  
Chairperson



The Hawaii County Police Commission, from left, Tateo Takata, Yasuhiko Kawawaki, Takashi Aragaki, Dr. Leila Kanno, Sadamu Tsubota, Terrence P. Cassidy, Dr. William Bergin.



POLICE DEPARTMENT  
COUNTY OF HAWAII  
349 KAPIOLANI STREET  
HILO, HAWAII 96720



GUY A. PAUL  
CHIEF OF POLICE



GUY A. PAUL  
Chief of Police

Hawaii County Police Commission  
County of Hawaii  
Hilo, Hawaii

Dear Commissioners:

Submitted herewith, as required by Section 52-66 of the Hawaii Revised Statutes, is the annual report of the Hawaii Police Department for 1981-82.

We have progressed, in the past year, in a number of areas of our services to the public, as this report will make evident.

During the year, we have been honored to have your service as voluntary commissioners who provide guidance and wisdom in the setting of policy for our department.

Sincerely,

*Guy A. Paul*

Guy A. Paul  
Chief of Police



The top management team of the Hawaii Police Department, from left, Inspector Wayne Carvalho, Hilo Operations; Deputy Chief Martin Kaaua; Chief Guy A. Paul, Inspector Robert Pung, Administration, and Inspector Raymond Glory, Country Operations.



## **IN MEMORIAM: RONALD E. AKAU**

Lieutenant Ronald E. Akau, who served the County of Hawaii for more than 13 years, died suddenly while on duty in July, 1981.

Lt. Akau, who was just a month short of his 35th birthday, had been a member of the department since 1968. He had served as a patrolman in Hilo and in Kona, and had been a school relations officer and a patrol sergeant in Kona.

When the Traffic Enforcement Unit was formed in 1979, he was named to head that special task force, and just four months before his death, he had been promoted to lieutenant and named to head the Vice Section.

At his funeral services, Deputy Chief Martin Kaaua, in the eulogy, read from a recommendation for promotion from one of Akau's superiors.

The recommendation said, in part "His behavior has always been exemplary. He is business-like and respectful, and has followed instructions accurately. He has displayed a high degree of loyalty to the department and its administration. While he is supportive of the men in his unit, he has displayed no hesitancy to discipline them should the need arise."

In closing the eulogy, the deputy went on to say:

"Lieutenant Akau has now ended his police career to move on to higher priorities. We will miss him, and we will watch over his loved ones that he has momentarily left behind. He was a good cop. His was a job well done."

Lieutenant Akau is survived by his wife, Donna Rae, a son, Bryan, and two daughters, Andrea K. and Renae H.

## **OVERVIEW: ISLE FREE OF ORGANIZED CRIME**

The Big Island remains relatively free of the influence of organized crime.

That's one of the key accomplishments of the past year of the Hawaii County Police Department.

Two organizations have operated here in the past; but they were effectively broken up as a result of good, hard police work.

We have maintained a constant vigil in the two areas where there is extensive foot traffic by visitors, Kailua-Kona and Banyan Drive in Hilo.

These patrols have reduced vandalism and permitted visitors to stroll about these areas without a feeling of apprehension.

In the area of violent crimes, murder, rape, robbery and assault, our rate is about one-third of the Mainland, while in the area of property crimes, including burglary and theft, our experience is slightly higher than the national average.

(Continued on page 6)

## **\*ORGANIZED CRIME**

(Continued from page 5)

Our record is good, in the area of violent crimes, but just average in the area of property crimes.

Two factors are relevant here. One is that a good portion of our people are peace-loving, and come from a culture that fosters respect for others in the community.

The other is that, we in the Police Department give crimes of a violent nature such high priority, and all resources needed are made available to bring those investigations to a successful conclusion. Property crimes, however, are so numerous that it is difficult to devote all of the resources they demand.

On balance, however, Hawaii County is relatively free of serious crime and certainly is the place to be for anyone who wishes to enjoy a safe environment.

## **COOPERATION HELPS POLICE SOLVE CRIME**

A case that involved both sides of the Big Island is a typical example of the continuing cooperation between the public and the Hawaii Police Department.

The case involved the theft of more than \$60,000 worth of jewelry from a Kona home.

It was solved as a result of a tip received on the CrimeStoppers hotline in Hilo.

Since it was started two years ago, the CrimeStoppers program has given out a total of \$2,375 in rewards, and information received in the program has been a continuing source of assistance to the department in the solution of crime on the Big Island.

In addition, at the end of the fiscal year, a number of other cases were being investigated, or were pending indictments.

Some of the calls resulted in complete, unexpected information, others just added that one missing piece to the investigative jigsaw puzzle. One call, in Hilo, resulted in the closing of 16 burglaries, three robberies, a narcotics case, a theft, an auto theft and an intimidation of witness case.

Some people use CrimeStoppers because of the possibility of reward, others are satisfied to play a part in solving crime, with the privilege of anonymity.

Public cooperation and an effective police effort go hand in hand. CrimeStoppers continues to be an excellent vehicle for that public cooperation.



Patrolman Wayne Hisashima, left, models the old uniform, while Sgt. Charles Chai shows the new, blue uniform.

## NEW BLUE UNIFORMS BRING STATE SIMILARITY

There's a new look to the uniformed officers of the Hawaii County Police Department.

The new look is a blue, dacron/polyester/wool combination uniform that was issued during the 1981-82 fiscal year, and which became mandatory for all uniformed personnel on July 1, 1982.

The new blue uniform, which replaces the light brown shirts and dark brown trousers of the old uniform, is the first change in attire for the department in 20 years.

Uniformity throughout the state was a key factor in the decision to change over from the brown to the blue color. The new uniforms are similar to those worn by officers in Hawaii's other three counties.

With the exception of the change in color, the uniforms remain the same, with sewn nametags, patches, and stripes in similar locations as in the past.



In the Word Processing Center, supervisor Elaine Fukui oversees the completion of a report.



Sharon Perreira of the Records Section microfilms reports for safekeeping.

## PROCESSING AND STORING OF WORDS IS CRITICAL

Words are very much a part of the Police Department.

Two major steps were taken in the past fiscal year to improve the flow and collection of words.

One was the installation of a word processing system, complete with a six-person team of word processors, to assist officers in getting reports on paper more quickly, thus allowing the officer to spend more time working on field duties.

The other is a system of micro-filming to allow the destruction of all excess written reports, with the information being recorded and stored on microfilm.

Included with the word processing system is a call-in cassette recording operation which allows up to three officers at a time to call in and dictate reports. Calls can be taken at any time over a 24-hour period, without the need for any personnel to be on hand to receive them.

The officer dictates the report, whether it is one page or 20 pages. It is then transcribed by a word processor operator, and a draft copy is then returned to the individual officer for approval.

If the officer is in a rural station, a telecopier is used for rapid transmission of the draft copy, which is then reviewed, returned for corrections and signed by the officer.

Early estimates are that the average report writing time is reduced by up to two hours a day, leaving more time for patrol and investigative activities.

(Continued on page 12)



## **\*WORD PROCESSING**

(Continued from page 11)

Other advantages of the word processing system include a reduction in time by eliminating the concern of the officer for grammar and spelling, and a uniform high quality of the reports.

The micro-filming, meanwhile, has caused a reduction in the amount of space necessary for the storage of records.

New microfilm equipment has been installed in the department, and all of the copying and developing of the exposed film is handled by department personnel.

Basically, all of the non-criminal paperwork of recent years has been put on microfilm, including all police bulletins, miscellaneous public reports, inactive personnel records, traffic reports, and all closed cases.

Two copies of each microfilm are made, one a working copy and the other a security copy, kept in a separate building.

More than 4,000 sheets of paper can be copied within one three-inch-by-three-inch container with a 100 foot roll of microfilm.

It provides ease of access, as well as a back-up security system to protect the records in case of fire or other disaster.

Words are very much a major tool of the Police Department.

These two steps, both brought to full utilization during the past fiscal year, will enable us to do a better job of using these very vital tools.

## **TRAFFIC ENFORCEMENT UNIT GETS PERMANENT STATUS**

The Hawaii County Council, in early 1982, reaffirmed a position that has been held by members of the Hawaii Police Department for several years.

By creating a permanent Traffic Enforcement Unit, and providing manpower for that unit, the Council endorsed a recommendation of both the police administration and Mayor Herbert Matayoshi.

The Traffic Enforcement Unit had been created in 1978, when Hawaii County was facing a serious crisis in the growing rate of fatal traffic accidents.

More than a million dollars in Federal funding was provided to set up a three-year trial TEU program to patrol the Big Island's highways.

In that period, the officers involved issued more than 24,000 citations and 43,000 warnings and made nearly 300 drunk driving arrests.

The results were spectacular. Accidents and injuries were substantially less than they would have been had the 1978 trend continued.

The new, permanent Traffic Enforcement Unit, with a sergeant in charge and seven patrolmen, will operate island-wide, with some officers stationed in Hilo and some in Kona.

Because of the new funding makeup of the unit, an additional benefit will be realized inasmuch as there will be a reduction in the obligation to concentrate on 55 miles-per-hour violations, as was required under federal funding. Instead, the unit, in addition to patrolling speeding areas, will also concentrate more heavily on the drinking driver and on high accident locations.





Water rescue skills are practiced as part of recruit training.



Recruits learn how to use police batons as self-defense weapons.

## TRAINING: IMPORTANT FOR ONGOING IMPROVEMENT

Each year, members of the Hawaii County Police Department spend more than 20,000 hours in training.

The 1981-82 fiscal year was no exception.

The 37th recruit class was among the specialized training sessions, with 15 new members of the department spending a total of 9,960 manhours getting intensified training in a variety of police subjects.

At the end of the fiscal year, training officers were about to begin the 38th recruit class, which, it is anticipated, will bring the department close to full strength for the first time in many years.

But training wasn't limited to new officers. Capt. Alvin Chong attended the FBI National Academy, and also attended a two-week course of instruction in dignitary protection conducted by the U.S. Secret Service.

Other members of the department were trained in such varied subjects as effective communication for managers; instructor development, computer terminal operation, fingerprint technology, dental forensics, arson and fire investigation, financial investigations, labor relations, helicopter rappelling, rape investigation, crash scene management, and crisis intervention.

The Hawaii County Police Department, through its Training Section, insures that new and modern methods of police technology are constantly brought to the attention of the members of the department, and that specialized training, where it is available, is offered to as many members of the department as is practical.

## CRIME CONFERENCE ENHANCES COOPERATION

A crime conference in Tokyo in November, 1981, attracted all four of Hawaii's police chiefs, as well as officials of a number of Japanese police units and U.S. law enforcement agencies.

The conference, which was held in Tokyo, had more than 70 participants.

Included, in addition to Hawaii's delegation, were officials of the Federal Bureau of Investigation, the Drug Enforcement Administration, U.S. Customs, the Secret Service, the Bureau of Alcohol, Tobacco and Firearms and the Internal Revenue Service.

Both national and major metropolitan police officials from Japan also took part.

This was the second meeting of its sort, designed to provide an exchange of information on organized crime activities which cross the boundaries of the U.S. and Japan.

The first conference was held on the Island of Kauai, in 1979.

There have been reports that people involved with Japan's organized crime operation have been spending time on the Big Island, but they do not appear to be involved in crime here at this time. They have been making land and real estate investments, however.

Contacts that have been established through the international conferences have already been of benefit to the Hawaii County Police Department.

## SANTOS HEADS LIST OF 1981 - 82 RETIREES

Seven veteran members of the Hawaii County Police Department retired from service during the 1981-82 fiscal year.

Captain Richard W. Santos, a 28-year veteran, headed the list.

Santos had served as a motor patrolman, detective, patrol lieutenant and as commander of the North Kohala and North Hilo districts before moving to Hilo to head the Criminal Investigation Section, his final assignment.

Other retirees included:

\*--Sgt. Joseph Dart III, who had been with the department since 1956 and who was serving as examiner of drivers prior to his retirement.

\*--Sergeant George S. Carvalho, a member of the department since 1956, who was a patrol sergeant in the Hamakua District when he retired.

\*--Sergeant Gerry E. Meyer, who became a police officer in 1956 and who was in the Community Relations Section when he retired.

\*--Doris A. Sugihara, who joined the department in 1960, after 10 years in other government service, and who was a police reporter in the Criminal Investigation Section when she retired.

\*--Patrolman Adam Carvalho, who joined the department in 1957 and who was on patrol duty in Puna when he retired.

\*--Patrolman Joseph Botelho, who joined the department in 1957 and who was on patrol duty in Hilo when he retired.

## STATISTICS SHOW 1981 WAS BUSY YEAR

Big Island police received an average of 224 complaints and reports each day during 1981.

That individual statistic, reflecting on the total of 81,911 reports and complaints in the year, is one of the highlights of the statistical portion of this annual report.

As in the past years, the narrative covers the fiscal year, 1981-82, while the statistical data is presented for the calendar year 1981.

During the calendar year, police officers drove 3,216,812 miles, or the equivalent of 1314 trips from Hilo to Los Angeles.

The average Big Island police officer in 1981 was 34.1 years old, and had just over nine years of service in the department. It cost Big Islanders \$87.34 each for police service in 1981.

A total of 805 persons were charged with major offenses, and 1,908 persons were charged with lesser offenses, with a clearance rate of 28.3 percent of the major offenses reported and 57.7 percent of the lesser offenses reported.

A total of 28 persons were killed in traffic on the Big Island in 1981, continuing a decrease that saw an all-time high of 44 in 1978, followed by 38 in 1979 and 32 in 1980.

At the end of the year, the Hawaii Police Department had an authorized strength of 274 sworn officers, with 26 vacancies. There was one police officer for every 391 persons on the island, and one officer for every 16 square miles of land.

## OFFENSES KNOWN TO POLICE & CLEARANCES 1981

CLASSIFICATION OF OFFENSES	Reported		Actual	Cleared by	Per Cent Cleared	Cleared	Cases
	or Known	Unfounded		Arrest or Otherwise*		Committed by Adults	Committed by Juv.
PART I CLASSES							
1a. Murder/Nonnegligent							
Manslaughter.....	3	-	3	5	166.7	5	-
2. Rape.....	33	1	32	14	43.8	14	-
3. Robbery.....	61	3	58	31	53.5	26	5
4. Aggravated Assault.....	87	1	86	74	86.1	69	5
5. Burglary.....	1,786	23	1,763	331	18.8	202	129
6. Larceny.....	3,542	81	3,461	725	21.0	505	220
7. Auto Theft.....	248	28	220	60	27.3	40	20
Crime Index Total.....	5,760	137	5,623	1,240	22.1	861	379
Crime Index Last Year.....	5,399	192	5,207	1,388	26.7	822	566
Per Cent Change.....			+8.0	-10.7		+4.7	-33.0
1b. Manslaughter by Negl. ....	-	-	-	-	-	-	-
8. Other Assaults.....	617	3	614	525	85.5	464	61
PART I TOTALS.....	6,377	140	6,237	1,765	28.3	1,325	440
PART I LAST YEAR.....	6,049	204	5,845	1,954	33.4	1,321	633
PER CENT CHANGE.....			+6.7	-9.7		+0.3	-30.5
PART II CLASSES							
9. Arson.....	51	-	51	9	17.7	6	3
10. Forgery/Counterfeit.....	248	2	246	118	48.0	110	8
11. Fraud.....	348	9	339	180	53.1	179	1
12. Embezzlement.....	14	1	13	5	38.5	5	-
13. Rec. Stolen Property.....	14	-	14	21	150.0	18	3
14. Vandalism.....	915	6	909	149	16.4	104	45
15. Weapons.....	67	1	66	55	83.8	49	6
16. Prostitution.....	11	-	11	11	100.0	11	-
17. Sex Offenses.....	40	3	37	14	37.8	13	1
18. Narcotic Drug Laws.....	914	12	902	507	56.2	410	97
19. Gambling.....	34	-	34	33	97.1	33	-
20. Offenses vs. Family.....	11	2	9	8	88.9	8	-
21. Driv. Under Influence.....	226	10	216	216	100.0	212	4
22. Liquor Laws.....	159	-	159	152	95.6	139	13
23.** Drunkenness.....	-	-	-	-	-	-	-
24. Disorderly Conduct.....	144	-	144	65	45.1	59	6
25. Vagrancy.....	-	-	-	-	-	-	-
26. All Other Offenses.....	1,367	20	1,347	947	70.3	846	101
27** Truancy.....	-	-	-	-	-	-	-
28. Curfew.....	50	-	50	50	100.0	-	50
29. Runaways.....	243	3	240	220	91.7	-	220
PART II TOTALS.....	4,856	69	4,787	2,760	57.7	2,202	558
PART II LAST YEAR.....	4,479	114	4,365	2,478	56.8	1,988	490
PER CENT CHANGE.....			+9.7	+11.4		+10.8	+13.9
GRAND TOTAL This Year.....	11,233	209	11,024	4,525	41.1	3,527	998
GRAND TOTAL Last Year.....	10,528	318	10,210	4,432	43.4	3,309	1,123
PER CENT CHANGE.....			+8.0	+2.1		+6.6	-11.1

\*Includes clearances of cases from previous years.

\*\*Not a criminal offense as of 1969.

## PERSONS CHARGED AND DISPOSITION 1981

CLASSIFICATION OF OFFENSES		DISPOSITIONS										
		Total Arrested	Adults Arrested	Juveniles Arrested	Released	Total Charged	Adults Guilty of Offense Charged	Adults Guilty of Lesser Offense	Bail Forfeited	Acquitted or Otherwise Dismissed	Referred to Juvenile Court	Pending
<b>PART I CLASSES</b>												
1a. Murder .....		6	6	-	(1)	7	2	3	-	1	-	4
b. Manslaughter by Negli. ....		2	2	-	-	2	2	-	-	-	-	-
2. Rape .....		7	7	-	5	2	-	1	-	1	-	-
3. Robbery .....		28	22	6	10	18	5	2	-	4	4	4
4. Aggravated Assault ...		33	31	2	18	15	4	5	-	6	2	2
5. Burglary .....		234	118	116	43	191	34	16	-	26	107	18
6a. Larceny - \$200 & over		69	51	18	16	53	17	3	-	13	16	6
b. Larceny - \$50 to \$200		86	39	47	10	76	16	1	-	12	44	7
c. Larceny - Under \$50 .		289	187	102	23	266	70	-	5	98	94	13
7. Auto Theft .....		45	27	18	9	36	7	1	-	5	18	7
8. Other Assaults .....		147	110	37	8	139	48	11	2	41	37	13
PART I TOTAL .....		946	600	346	141	805	205	43	7	207	322	74
<b>PART II CLASSES</b>												
9. Arson .....		8	4	4	-	8	4	-	-	1	4	-
10. Forgery/Counterfeiting		14	12	2	6	8	7	-	-	1	1	-
11. Fraud .....		55	53	2	5	50	25	-	2	22	2	8
12. Embezzlement .....		2	2	-	-	2	1	-	-	1	-	-
13. Receiving Stolen Prop. ...		4	-	4	3	1	-	-	-	1	1	-
14. Vandalism .....		77	53	24	8	69	22	-	-	19	23	6
15. Weapons .....		41	35	6	4	37	5	2	-	21	5	11
16. Prostitution .....		12	12	-	2	10	3	-	-	9	-	-
17. Sex Offenses .....		7	6	1	(1)	8	2	-	-	6	1	-
18. Narcotic Drug Laws ..		602	472	130	162	440	164	3	7	141	108	61
19. Gambling .....		52	52	-	36	16	1	-	-	15	-	-
20. Offenses vs. Family...		-	-	-	-	-	-	-	-	-	-	-
21. Driv. Under Influence		226	221	5	55	171	147	3	2	15	4	22
22. Liquor Laws .....		244	203	41	17	227	135	-	2	19	30	42
23.** Drunkenness .....		-	-	-	-	-	-	-	-	-	-	-
24. Disorderly Conduct ...		72	64	8	6	66	33	-	2	15	7	13
25. Vagrancy .....		-	-	-	-	-	-	-	-	-	-	-
26. All Other Offenses....		643	558	85	39	604	195	6	18	236	83	166
27.** Truancy .....		-	-	-	-	-	-	-	-	-	-	-
28. Curfew .....		92	-	92	54	38	-	-	-	-	38	-
29. Runaways .....		165	-	165	12	153	-	-	-	-	153	-
PART II TOTAL .....		2,316	1,747	569	408	1,908	744	14	33	522	460	329
GRAND TOTAL .....		3,262	2,347	915	549	2,713	949	57	40	729	782	403
<b>TRAFFIC ARRESTS</b>												
Hazardous Violations .		6,051	5,704	347	59	5,992	NOT RECORDED				12	
Other Violations .....		7,962	7,623	339	15	7,947	"				3	
Parking Violations ....		20,255	20,255	-	62	20,193	"				-	
Traffic Arrests Total ..		34,268	33,582	686	136	34,132	"				15	

\*Includes dispositions of cases from previous years.

\*\*Not a criminal offense as of 1969.

## OFFENSES AND COMPLAINTS KNOWN TO POLICE BY DISTRICT — COUNTY OF HAWAII 1981

CLASSIFICATION OF OFFENSES		BY DISTRICT							
		Total	South Hilo	North Hilo	North Hamakua	North Koh.	South Koh.	Kona	Ka'u Puna
<b>PART I CLASSES</b>									
1a. Murder/Nonnegligent									
Manslaughter .....	3	1	-	-	-	-	-	1	-
1b. Manslaughter by Negli...	-	-	-	-	-	-	-	-	-
2. Rape .....	33	20	-	-	-	2	7	2	2
3. Robbery .....	61	34	-	1	-	1	20	-	5
4. Aggravated Assault ....	87	31	-	3	2	6	27	4	14
5. Burglary .....	1,786	817	8	52	15	56	500	58	280
6. Larceny .....	3,542	1,756	78	112	48	186	976	97	289
7. Auto Theft .....	248	101	-	16	4	13	94	5	15
8. Other Assaults .....	617	316	6	16	11	19	172	20	57
PART I TOTALS .....	6,377	3,076	92	200	80	283	1,797	186	663
<b>PART II CLASSES</b>									
9. Arson .....	51	17	-	3	-	1	14	4	12
10. Forgery/Counterfeiting ..	248	147	-	3	-	15	77	-	6
11. Fraud .....	348	155	-	1	2	14	151	9	16
12. Embezzlement .....	14	3	-	-	-	2	9	-	-
13. Receiving Stolen Prop. ...	14	11	-	1	-	-	1	-	1
14. Vandalism .....	915	464	17	65	21	52	156	47	93
15. Weapons .....	67	29	-	-	2	5	16	5	10
16. Prostitution .....	11	9	-	-	-	-	2	-	-
17. Sex Offenses .....	40	22	-	1	-	-	14	-	3
18. Narcotic Drug Laws .....	914	328	23	25	16	34	222	64	202
19. Gambling .....	34	4	-	1	-	-	-	-	29
20. Offenses vs. Family .....	11	7	-	-	-	-	1	1	2
21. Driv. Under Influence ...	226	100	1	5	1	12	73	4	30
22. Liquor Laws .....	159	118	-	1	4	-	32	-	4
23.* Drunkenness .....	-	-	-	-	-	-	-	-	-
24. Disorderly Conduct .....	144	68	1	6	5	1	44	5	14
25. Vagrancy .....	-	-	-	-	-	-	-	-	-
26. All Other Offenses .....	1,367	638	10	31	39	31	307	82	229
27.* Truancy .....	-	-	-	-	-	-	-	-	-
28. Curfew .....	50	40	1	-	-	-	5	-	4
29. Runaways .....	243	147	2	4	4	5	39	13	29
PART II TOTALS .....	4,856	2,307	55	147	94	172	1,163	234	684
PART I & II TOTALS .....	11,233	5,383	147	347	174	455	2,960	420	1,347
<b>TRAFFIC ENFORCEMENT</b>									
Hazardous Violations ....	6,051	1,505	120	312	80	395	2,866	140	633
Other Violations .....	7,962	2,559	163	349	269	475	2,465	288	1,394
Parking Violations .....	20,255	9,383	3	44	16	388	10,003	24	394
**Traffic Enforce. Totals ...	34,268	13,447	286	705	365	1,258	15,334	452	2,421
Traffic Accidents Totals .	2,051	985	49	55	28	149	517	57	211
Numbered Misc. Public									
Reports Totals .....	22,654	8,430	348	828	1,047	1,756	6,541	1,441	2,263
GRAND TOTALS .....	70,206	28,245	830	1,935	1,614	3,618	25,352	2,370	6,242

\*Not a criminal offense as of 1969.

\*\*Includes Traffic Task Force Unit Totals.

# **DISTRIBUTION OF ALL COMPLAINTS AND NUMBERED REPORTS BY DISTRICT AND WATCH 1981**

FIRST WATCH (11PM-7PM)	Total	S. Hilo	N. Hilo	Hamakua	N. Kohala	S. Kohala	Kona	Ka'u	Puna
Part I Offenses .....	1,207	616	22	53	14	52	352	27	71
Part II Offenses .....	710	393	10	16	9	26	177	20	59
Traffic Violations .....	2,668	898	7	37	14	59	1,398	23	232
MV Accidents .....	490	203	13	14	9	38	135	15	63
Misc. Public Reports .....	4,724	2,097	38	102	58	308	1,639	125	357
TOTAL.....	9,799	4,207	90	222	104	483	3,701	210	782
SECOND WATCH (7AM-3PM)									
Part I Offenses .....	3,311	1,552	44	110	44	155	872	125	409
Part II Offenses .....	2,454	1,124	30	89	49	97	565	135	365
Traffic Violations .....	18,327	9,204	177	340	219	801	6,260	219	1,107
MV Accidents .....	722	392	17	17	10	42	148	18	78
Misc. Public Reports .....	8,440	2,893	173	358	586	743	2,145	617	925
TOTAL.....	33,254	15,165	441	914	908	1,838	9,990	1,114	2,884
THIRD WATCH (3PM-11PM)									
Part I Offenses .....	1,859	908	26	37	22	76	573	34	183
Part II Offenses .....	1,692	790	15	42	36	49	421	79	260
Traffic Violations .....	13,273	3,345	102	328	132	398	7,676	210	1,082
MV Accidents .....	839	390	19	24	9	69	234	24	70
Misc. Public Reports .....	9,490	3,440	137	368	403	705	2,757	699	981
TOTAL.....	27,153	8,873	299	799	602	1,297	11,661	1,046	2,576
TOTAL ALL WATCHES									
Part I Offenses .....	6,377	3,076	92	200	80	283	1,797	186	663
Part II Offenses .....	4,856	2,307	55	147	94	172	1,163	234	684
Traffic Violations .....	34,268	13,447	286	705	365	1,258	15,354	452	2,421
MV Accidents .....	2,051	985	49	55	28	149	517	57	211
Misc. Public Reports .....	22,654	8,430	348	828	1,047	1,756	6,541	1,441	2,263
GRAND TOTAL .....	70,206	28,245	830	1,935	1,614	3,618	25,352	2,370	6,242

# **OFFENSES CLEARED BY JUVENILE ARRESTS OR OTHERWISE\* BY DISTRICT 1981**

DISTRICT	PART I	PART II	TRAFFIC VIOLATIONS	TOTAL OFFENSES
South Hilo.....	191	298	292	781
North Hilo.....	2	5	7	14
Hamakua.....	27	13	30	70
North Kohala.....	23	19	39	81
South Kohala.....	26	13	33	72
Kona.....	92	99	211	402
Ka'u.....	17	36	33	86
Puna.....	62	75	41	178
TOTAL.....	440	558	686	1,684

\*Warned or Reprimanded, lack of prosecution.

# **JUVENILE ARRESTS BY DISTRICT 1981**

DISTRICT	PART I	PART II	TRAFFIC ARRESTS	TOTAL
South Hilo .....	146	310	292	748
North Hilo .....	2	4	7	13
Hamakua .....	23	7	30	60
North Kohala .....	21	16	39	76
South Kohala .....	12	11	33	56
Kona .....	88	105	211	404
Ka'u .....	9	30	33	72
Puna .....	45	86	41	172
TOTAL .....	346	569	686	1,601



# JUVENILE ARRESTS BY AGE & SEX 1981

## CLASSIFICATION OF OFFENSE

CLASSIFICATION OF OFFENSE				Both Sexes		Total M F		10 and Under M F		11 - 12 M F		13 - 14 M F		15 M F		16 M F		17 M F	
PART I CLASSES																			
1a. Murder/Nonnegli. Manslaughter .....				-	-	-	-	-	-	-	-	-	-	-	-	-	-	-	-
1b. Manslaughter by Negli. ....				-	-	-	-	-	-	-	-	-	-	-	-	-	-	-	-
2. Rape .....				-	-	-	-	-	-	-	-	-	-	-	-	-	-	-	-
3. Robbery .....				6	6	-	-	-	-	-	-	2	-	-	-	2	-	2	-
4. Aggravated Assault .....				2	2	-	-	-	-	-	-	-	-	-	-	-	-	2	-
5. Burglary .....				116	108	8	2	-	7	1	25	3	15	1	23	2	36	1	
6a. Larceny - \$200 & Over .....				18	13	5	-	-	-	-	3	1	5	2	2	1	3	1	
6b. Larceny - \$50 to \$200 .....				47	28	19	-	2	1	2	4	7	9	-	11	5	4	3	
6c. Larceny - Under \$50 .....				102	75	27	3	-	3	2	17	12	11	5	20	2	21	6	
7. Auto Theft .....				18	18	-	-	-	-	-	5	-	7	-	3	-	3	-	
8. Other Assaults .....				37	31	6	-	-	-	-	4	1	8	2	11	-	8	3	
PART I TOTALS .....				346	281	65	5	2	11	5	60	24	54	10	72	10	79	14	
PART II CLASSES																			
9. Arson .....				4	4	-	-	-	-	-	1	-	1	-	-	-	2	-	
10. Forgery/Counterfeiting .....				2	1	1	-	-	-	-	-	-	-	-	-	1	1	-	
11. Fraud .....				2	1	1	-	-	-	-	-	-	1	1	-	-	-	-	
12. Embezzlement .....				-	-	-	-	-	-	-	-	-	-	-	-	-	-	-	
13. Receiving Stolen Prop. ....				4	3	1	-	-	-	-	2	-	-	-	-	1	1	-	
14. Vandalism .....				24	22	2	-	-	2	-	5	-	3	-	5	2	7	-	
15. Weapons .....				6	6	-	-	-	-	-	1	-	-	-	3	-	2	-	
16. Prostitution .....				-	-	-	-	-	-	-	-	-	-	-	-	-	-	-	
17. Sex Offenses .....				1	1	-	-	-	-	-	-	-	-	-	1	-	-	-	
18. Narcotic Drug Laws .....				130	108	22	1	-	17	1	13	5	15	7	22	3	40	6	
19. Gambling .....				-	-	-	-	-	-	-	-	-	-	-	-	-	-	-	
20. Offenses vs. Family .....				-	-	-	-	-	-	-	-	-	-	-	-	-	-	-	
21. Driv. Under Influence .....				5	4	1	-	-	-	-	-	-	-	-	1	1	3	-	
22. Liquor Laws .....				41	32	9	-	-	-	-	2	1	5	1	10	2	15	5	
23.* Drunkenness .....				-	-	-	-	-	-	-	-	-	-	-	-	-	-	-	
24. Disorderly Conduct .....				8	8	-	-	-	-	-	1	-	2	-	2	-	3	-	
25. Vagrancy .....				-	-	-	-	-	-	-	-	-	-	-	-	-	-	-	
26. All Other Offenses .....				85	69	16	1	-	-	-	13	2	13	5	20	4	22	5	
27.* Truancy .....				-	-	-	-	-	-	-	-	-	-	-	-	-	-	-	
28. Curfew .....				92	76	16	6	1	8	3	19	3	16	1	14	3	13	5	
29. Runaways .....				165	81	84	-	-	4	3	21	28	21	27	18	15	17	11	
PART II TOTALS .....				569	416	153	8	1	31	7	78	39	77	42	96	32	126	32	
GRAND TOTALS .....				915	697	218	13	3	42	12	138	63	131	52	168	42	205	46	
TRAFFIC ENFORCEMENT																			
Hazardous Violations .....				347	292	55	1	-	-	-	3	-	44	8	88	15	156	32	
Other Violations .....				339	280	59	-	-	1	2	17	4	45	6	71	16	146	31	
Parking Violations .....				-	-	-	-	-	-	-	-	-	-	-	-	-	-	-	
TRAFFIC ENFORCEMENT TOTAL				686	572	114	1	-	1	2	20	4	89	14	159	31	302	63	

\*Not a criminal offense as of 1969.

# **SIX YEAR COMPARISON OF JUVENILE ARRESTS COUNTY OF HAWAII 1976-1981**

## **CLASSIFICATION OF OFFENSES**

<b>PART I CLASSES</b>		1976	1977	1978	1979	1980	1981
1a.	Murder/Nonnegli. Manslaughter .....	-	-	-	-	3	-
b.	Manslaughter by Negligence .....	-	-	-	-	-	-
2.	Rape .....	-	1	3	2	1	-
3.	Robbery .....	18	1	9	11	11	6
4.	Aggravated Assault .....	4	4	3	4	6	2
5.	Burglary .....	131	113	141	156	137	116
6a.	Larceny - \$50 & over .....	45	57	73	72	63	65
b.	Larceny - Under \$50 .....	112	139	167	140	119	102
7.	Auto Theft .....	46	43	48	57	36	18
8.	Other Assaults .....	55	34	52	27	38	37
Part I Totals .....		411	392	496	469	414	346
<b>PART II CLASSES</b>		1976	1977	1978	1979	1980	1981
9.	Arson .....	1	4	9	4	2	4
10.	Forgery/Counterfeiting .....	2	-	1	1	6	2
11.	Fraud .....	3	-	2	-	2	2
12.	Embezzlement .....	-	-	-	-	-	-
13.	Receiving Stolen Property .....	2	4	7	5	2	4
14.	Vandalism .....	41	31	37	49	40	24
15.	Weapons .....	6	6	13	13	4	6
16.	Prostitution .....	-	-	-	-	-	-
17.	Sex Offenses .....	-	1	-	-	3	1
18.	Narcotic Drug Laws .....	64	62	65	63	76	130
19.	Gambling .....	5	7	6	-	11	-
20.	Offenses vs. Family .....	-	-	-	-	-	-
21.	Driving Under Influence .....	5	2	2	6	7	5
22.	Liquor Laws .....	31	6	10	5	4	41
23.*	Drunkenness .....	-	-	-	-	-	-
24.	Disorderly Conduct .....	5	4	9	9	9	8
25.	Vagrancy .....	-	-	-	-	-	-
26.	All Other Offenses .....	51	68	104	72	52	85
27.*	Truancy .....	-	-	-	-	-	-
28.	Curfew .....	33	12	21	27	44	92
29.	Runaways .....	102	148	130	144	156	165
Part II Totals .....		351	355	416	398	418	569
<b>GRAND TOTAL .....</b>		<b>762</b>	<b>747</b>	<b>912</b>	<b>867</b>	<b>832</b>	<b>915</b>

\*Not a criminal offense as of 1969.

# **MOTOR VEHICLE TRAFFIC ACCIDENTS BY DISTRICTS** **1975-1981**

DISTRICT	1975	1976	1977	1978	1979	1980	1981	1981			
								No. Fatal & Injury Acc.	No. Persons Killed	No. Persons Injured	Property Damage Only
S. Hilo .....	870	974	962	950	1,005	1,032	985	550	11	838	435
N. Hilo .....	54	47	46	69	62	62	49	32	1	45	17
Hamakua .....	53	55	75	93	69	74	55	38	2	63	17
N. Kohala .....	30	27	37	34	33	44	28	14	0	26	14
S. Kohala .....	106	112	135	142	137	133	149	80	3	115	69
Kona .....	350	397	445	556	602	539	517	314	8	441	203
Ka'u .....	45	47	48	58	47	59	57	36	0	56	21
Puna .....	145	141	169	204	189	177	211	135	3	201	76
TOTAL .....	1,653	1,800	1,917	2,106	2,144	2,120	2,051	1,199	28	1,785	852

## TRAFFIC ENFORCEMENT BY DISTRICTS

### 1981

OFFENSE	Total	Adult	Juv.	Relsd.	Total Arrested & Cited	S. Hilo	N. Hilo	Hamakua	North Kohala	South Kohala	Kona	Ka'u	Puna
Hazardous Viol. Total .....	6,051	5,704	347	59	5,992	1,505	120	312	80	395	2,866	140	633
Drv. Under Influence....	226	221	5	55	171	99	1	5	1	12	74	4	30
Speeding .....	4,313	4,102	211	3	4,310	772	106	268	65	285	2,230	104	483
Due Care .....	27	26	1	-	27	21	-	-	-	-	4	-	2
Reckless Driving .....	63	52	11	-	63	21	-	2	3	8	23	-	6
Traffic Signals .....	228	205	23	-	228	177	-	-	-	-	51	-	-
Stop Sign .....	329	298	31	-	329	136	-	5	3	20	140	7	18
Other Regulatory Sign ...	106	88	18	-	106	56	1	10	-	-	34	-	5
Improper Passing .....	344	327	17	-	344	37	10	14	2	51	164	10	56
Improper Turning .....	68	67	1	-	68	36	-	-	-	4	25	1	2
Right of Way-Vehicle ....	61	58	3	-	61	21	1	1	-	3	27	1	7
Right of Way-Ped .....	1	1	-	-	1	1	-	-	-	-	-	-	-
Following Too Closely ...	8	7	1	-	8	1	-	-	-	1	5	-	1
No or Improper Signal ..	5	5	-	-	5	2	-	-	1	-	1	-	1
Improper Starting .....	-	-	-	-	-	-	-	-	-	-	-	-	-
Improper Backing .....	-	-	-	-	-	-	-	-	-	-	-	-	-
Improper Lane Usage ...	43	40	3	-	43	32	-	-	-	1	10	-	-
Failure to Drive-Right....	75	72	3	-	75	24	-	3	-	1	33	8	6
Defective Equipment ....	9	8	1	-	9	2	-	1	-	-	4	-	2
Pedestrian Violation .....	8	4	4	-	8	2	-	-	2	4	-	-	-
Other Hazardous Viol. ....	137	123	14	1	136	65	1	3	3	5	41	5	14
Other Violation .....	7,962	7,623	339	15	7,947	2,559	163	349	269	475	2,465	288	1,394
Parking Violation .....	20,255	20,255	-	62	20,193	9,383	3	44	16	388	10,003	24	394
<b>TOTAL .....</b>	<b>34,268</b>	<b>33,582</b>	<b>686</b>	<b>136</b>	<b>34,132</b>	<b>13,447</b>	<b>286</b>	<b>705</b>	<b>365</b>	<b>1,258</b>	<b>15,334</b>	<b>452</b>	<b>2,421</b>
Violator Contracts .....	25,943					7,860	775	1,561	723	2,116	7,785	976	4,147
Hazardous .....	19,354					5,447	656	1,254	463	1,743	6,315	769	2,707
Parking .....	24					-	-	2	1	1	-	5	15
Others .....	6,565					2,413	119	305	259	372	1,470	202	1,425
<b>GRAND TOTAL .....</b>	<b>60,211</b>					<b>21,307</b>	<b>1,061</b>	<b>2,266</b>	<b>1,088</b>	<b>3,374</b>	<b>23,119</b>	<b>1,428</b>	<b>6,568</b>

# **ANALYSIS OF TRAFFIC ACCIDENTS BY POPULATION, LICENSED DRIVERS, MOTOR VEHICLES, AND GASOLINE CONSUMPTION 1977-1981**

	<u>1977</u>	<u>1978</u>	<u>1979</u>	<u>1980</u>	<u>1981</u>
Accidents .....	1,917	2,106	2,144	2,120	2,051
Injuries .....	1,656	1,834	1,832	1,776	1,785
Killed .....	30	44	38	32	28
Population (Approximate) .....	78,100	80,100	83,700	92,053	97,000
Number of Licensed Drivers .....	53,177	53,815	54,730	55,551	60,171
Registered Motor Vehicles .....	64,219	66,911	71,693	74,337	77,584
Fuel Consumption (Gallons) .....	38,406,035	40,280,581	42,246,338	40,898,490	41,164,107
Gasoline .....	(35,910,893)	(37,536,593)	(39,249,472)	(38,499,168)	(38,890,738)
Diesel Oil & Liq. Pet. Gas (Highway use) ..	( 2,495,142)	( 2,743,988)	( 2,996,866)	( 2,399,322)	( 2,273,369)
Rate Per 10,000 Population					
Accidents .....	245.5	262.9	256.2	230.3	211.4
Injuries .....	212.0	229.0	218.9	192.9	184.0
Deaths .....	3.8	5.5	4.5	3.5	2.9
Rate Per 1,000 Licensed Drivers					
Accidents .....	36.0	39.1	39.2	38.2	34.1
Injuries .....	31.1	34.1	33.5	32.0	29.7
Deaths .....	.56	.82	.69	.58	.47
Rate Per 1,000 Motor Vehicles					
Accidents .....	29.9	31.5	29.9	28.5	26.4
Injuries .....	25.8	27.4	25.6	23.9	23.0
Deaths .....	.47	.66	.53	.43	.36
Rate Per 1,000,000 Gallons Fuel Consumed					
Accidents .....	49.9	52.3	50.8	51.8	49.8
Injuries .....	43.1	45.5	43.4	43.4	43.4
Deaths .....	.78	1.09	.90	.78	.68

## MISCELLANEOUS SERVICES AND REPORTS 1981

	<u>1977</u>	<u>1978</u>	<u>1979</u>	<u>1980</u>	<u>1981</u>
Motor Vehicle Non-Traffic Accidents .....	159	150	165	204	225
Minor MV Non-Traffic Accidents .....	518	561	572	659	553
Minor MV Traffic Accidents .....	1,105	1,149	1,115	1,236	1,098
Lost, Found Property .....	1,011	1,141	1,207	1,401	1,494
Building Checks (Numbered) .....	2,563	2,675	2,782	3,062	3,093
Doors, Windows Open .....	637	525	377	462	725
Persons Missing .....	47	44	33	54	57
Fires Reported .....	382	401	288	336	471
Safety .....	895	881	830	907	973
Arrests for Other Jurisdictions .....	34	30	20	52	72
Domestic Trouble .....	646	703	826	948	893
Transportation .....	106	210	247	192	81
Outside Assistance .....	171	101	162	158	182
A.W.O.L. ....	24	16	36	18	11
Unattended Deaths .....	69	75	100	96	131
Coroner's Inquest .....	82	67	62	75	90
Attempted Suicides .....	87	58	63	49	76
Suicidal Deaths .....	11	10	9	14	8
Strayed Animals .....	774	869	818	972	1,048
Minor Nuisances .....	4,604	2,991	3,028	3,897	4,125
Notifications .....	75	88	96	73	58
Civil Matter .....	140	182	221	225	173
Insanity Cases .....	43	49	60	29	31
Drunkenness Assistance .....	13	30	34	34	60
Other Personal Services .....	4,278	5,252	4,179	5,834	6,505
Public Accident Reports .....	381	467	304	249	233
Industrial Accident Reports .....	94	148	116	115	113
Home Accident Reports .....	109	207	120	75	75
Beat Condition Reports .....	1,454	1,200	1,348	1,242	1,368
Other Un-numbered Misc. Services .....	16,271	18,742	16,313	15,346	11,705
Violator Contacts .....	8,033	8,795	15,997	24,735	25,943
TOTAL .....	<u>44,816</u>	<u>47,817</u>	<u>51,528</u>	<u>62,749</u>	<u>61,670</u>

## HOW THE MONEY WAS SPENT 1981

	AMOUNT	PERCENT
<b>SALARIES</b>		
Administration and personnel .....	\$5,970,023.00	70.5%
<b>EQUIPMENT</b>		
Policing Equipment .....	310,307.00	3.6%
<b>EXPENSE</b>		
Contractual Services .....	\$1,426,231.00	
Materials & Supplies .....	627,881.00	
Other Charges .....	118,198.00	
1980 - 1981 Encumbrance .....	19,119.00	
Total .....	<u>\$2,191,429.00</u>	<u>25.9%</u>
<b>GRAND TOTAL .....</b>	<u><u>\$8,471,759.00</u></u>	<u><u>100.0%</u></u>

**PER CAPITA COST OF POLICE SERVICE  
1979-1981**

	1979	1980	1981
Total Expenditures .....	6,476,662.83	7,225,083.32	8,471,759.00
Population (Approximate) ....	83,700*	92,053*	97,000*
Per Capita Cost .....	77.38	78.49	87.34

\*State Department of Planning & Economic Development Estimate.



## RATIO OF POPULATION TO POLICE OFFICERS 1976-1981 (As of December 31)

SWORN	1976	1977	1978	1979	1980	1981
Authorized Strength .....	238	238	238	264	266	274
Vacancies .....	22	9	21	40	25	26
Actual Strength .....	216	229	217	224	241	248
CIVILIAN*						
Authorized Strength .....	39	39	38	54	57	59
Vacancies .....	3	4	1	8	9	8
Actual Strength .....	36	35	37	46	48	51
Population** .....	77,800	78,100	80,100	83,700	92,053	97,000
Number of Persons Per Police Officer .....	360	341	369	374	382	391

\*Does not include temporary, part-time, or short-term employees.

\*\*State Department of Planning & Economic Development estimate.

## COMPARATIVE SUMMARY OF THE ANNUAL REPORT 1978-1981

ADMINISTRATION:	1978	1979	1980	1981
Total Numerical Strength, Dec. 31 ...	277	278	301	301
Appointments .....	17	52	49	37
Separations .....	26	51	26	37
Average Age of Police Officers .....	34.7	34	34.2	34.1
Average Length of Service, Years .....	9.7	10	9.2	9.1
Total General Orders Issued .....	16	3	16	3
Total Special Orders Issued .....	0	0	0	0
Total Administrative Notices Issued ..	8	5	7	6
Total Reserve Orders Issued .....	0	0	0	0
Total Memorandums Issued .....	42	73	75	69
Total Personnel Orders Issued .....	78	108	73	77
EXPENDITURES:				
Actual Policing Expenses .....	5,921,659.24	6,476,662.83	7,225,083.32	8,471,759.00
Per Capita Cost .....	73.93	77.38	78.49	87.34
Total Patrol Mileage .....	2,611,805	2,663,423	3,028,509	3,216,812
Auto Patrol, Cost Per Mile .....	0.228	0.243	0.239	0.263
OFFENSES AND ARRESTS:				
PART I OFFENSES				
Actual Offenses .....	4,987	5,207	5,859	6,237
Cleared by Arrest or Otherwise ..	1,684	1,939	1,961	1,765
Per Cent Cleared .....	33.8	37.2	33.5	28.3
Persons Charged .....	844	899	957	805
PART II OFFENSES (Excl. Traffic)				
Actual Offenses .....	4,085	4,045	4,365	4,787
Cleared by Arrest or Otherwise ..	2,258	2,331	2,478	2,760
Per Cent Cleared .....	55.3	57.6	56.8	57.7
Persons Charged .....	1,475	1,503	1,632	1,908
REPORTS AND COMPLAINTS RECEIVED:				
Part I Offenses .....	5,170	5,415	6,078	6,377
Part II Offenses (Excl. Traf. Viol.)	4,154	4,140	4,479	4,856
Traffic Violations .....	15,718	22,166	32,725	34,268
MV Traffic Accidents .....	2,106	2,144	2,120	2,051
Misc. Reports (Numbered) .....	19,080	16,870	21,426	22,654
All Other Misc. Services .....	18,742	16,313	15,346	11,705
TOTAL COMPLAINTS AND REPORTS	64,970	68,048	82,174	81,911
JUVENILES:				
PART I OFFENSES				
Offenses Committed by Juveniles	571	715	633	440
Juveniles Warned & Reprimanded	166	180	179	138
Juveniles Referred to Other Depts	0	2	3	0
Juveniles Arrested .....	496	469	414	346
Total Juveniles Handled .....	662	651	596	484
PART II OFFENSES (Excl. Traffic)				
Offenses Committed by Juveniles	469	525	490	558
Juveniles Warned & Reprimanded	116	143	131	118
Juveniles Referred to Other Depts	2	3	2	3
Juveniles Arrested .....	416	398	418	569
Total Juveniles Handled .....	534	544	551	690
Juvenile Traffic Citations & Arrests	461	735	765	686

## Comparative Summary of the Annual Report (Cont'd) 1978-1981

MOTOR VEHICLE TRAFFIC ACCIDENTS:	1978	1979	1980	1981
Fatal Accidents .....	37	35	30	28
Injury Accidents .....	1,206	1,159	1,198	1,171
Property Damage Only Accidents	863	950	892	852
TOTAL MOTOR VEHICLE TRAFFIC ACCIDENTS .....	2,106	2,144	2,120	2,051
Number of Persons Killed .....	44	38	32	28
Number of Persons Injured ....	1,834	1,832	1,776	1,785
Estimated Damage to Property .	\$2,769,872.00	\$3,019,229.00	NA*	NA*
Minor Traffic Accidents .....	1,149	1,115	1,236	1,098
TRAFFIC ENFORCEMENT:				
Citations & Arrests, Hazardous Traffic Violations .....	3,146	5,708	5,365	6,051
Citations & Arrests, Other Traffic Violations .....	3,541	6,286	8,424	7,962
Citations & Arrests, Parking Traffic Violations .....	9,031	10,172	18,936	20,255
TOTAL TRAFFIC ENFORCEMENT	15,718	22,166	32,725	34,268
LICENSES & PERMITS:				
Operators' Licenses Issued ....	4,168	5,060	4,927	5,293
Operators' Licenses Renewed ..	10,828	18,120	18,495	13,852
Instruction Permits Issued ....	7,798	8,595	8,716	8,645
Duplicate License .....	2,579	2,589	2,573	2,918
Firearms Registered .....	1,369	1,391	1,817	1,962
Firearms Permits Issued .....	642	586	354	1,457
Fireworks Permits Issued .....	16	26	22	18
Permits to Drink at Public Parks Issued .....	216	191	175	262
Parade & Motorcade Permits Issued	238	202	228	264
Reconstructed Motor Vehicle Permits Issued .....	75	40	53	61
Revenues, Exam. of Drivers ....	\$ 112,663.10	\$ 176,646.00	\$ 179,461.00	\$ 146,157.00
Revenues, Other Police .....	\$ 33,675.15	35,609.20	43,117.33	40,706.83
MISCELLANEOUS:				
Number of Persons Killed				
Public Acc. (Excl. Drowning) .	2	4	7	3
Drowning .....	13	11	7	9
Industrial Accidents .....	1	5	5	5
Home Accidents .....	2	2	1	3
Identification Fingerprints on File	39,425	40,180	41,093	42,536
Identification Photographs on File	18,350	20,243	21,056	22,299
Value of Property Stolen .....	\$1,448,601.00	\$1,567,475.00	\$2,007,440.00	\$2,705,008.00
Value of Property Recovered ...	\$ 527,405.00	553,028.00	541,900.00	664,356.00
Per Cent of Property Recovered .	36.4	35.3	27.0	24.6
Vice Checks .....	10,613	9,315	7,374	11,334
Reports to Philippine & British Consulates .....	14	12	12	0
Population, County of HI (approx)	80,100**	83,700**	92,053**	97,000**
Area in Square Miles .....	4,015	4,015	4,015	4,015

\*NA - Not available

\*\*State Dept. of Planning & Economic Development estimate.

## Law Enforcement Code of Ethics

**As a Law Enforcement Officer**, my fundamental duty is to serve mankind; to safeguard lives and property; to protect the innocent against deception, the weak against oppression or intimidation, and the peaceful against violence or disorder; and to respect the Constitutional rights of all men to liberty, equality and justice.

**I will** keep my private life unsullied as an example to all; maintain courageous calm in the face of danger, scorn, or ridicule; develop self-restraint; and be constantly mindful of the welfare of others. Honest in thought and deed in both my personal and official life, I will be exemplary in obeying the laws of the land and the regulations of my department. Whatever I see or hear of a confidential nature or that is confided to me in my official capacity will be kept ever secret unless revelation is necessary in the performance of my duty.

**I will** never act officiously or permit personal feelings, prejudices, animosities or friendships to influence my decisions. With no compromise for crime and with relentless prosecution of criminals, I will enforce the law courteously and appropriately without fear or favor, malice or ill will, never employing unnecessary force or violence and never accepting gratuities.

**I recognize** the badge of my office as a symbol of public faith, and I accept it as a public trust to be held so long as I am true to the ethics of the police service. I will constantly strive to achieve these objectives and ideals, dedicating myself before God to my chosen profession . . . law enforcement.

International Association of Chiefs of Police, Inc.

**END**