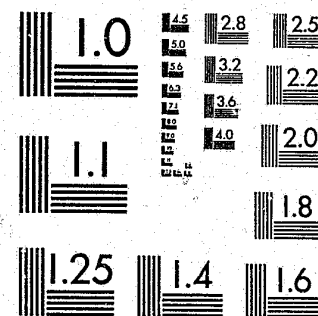


National Criminal Justice Reference Service

**ncjrs**

This microfiche was produced from documents received for inclusion in the NCJRS data base. Since NCJRS cannot exercise control over the physical condition of the documents submitted, the individual frame quality will vary. The resolution chart on this frame may be used to evaluate the document quality.



MICROCOPY RESOLUTION TEST CHART  
NATIONAL BUREAU OF STANDARDS-1963-A

Microfilming procedures used to create this fiche comply with the standards set forth in 41CFR 101-11.504.

Points of view or opinions stated in this document are those of the author(s) and do not represent the official position or policies of the U. S. Department of Justice.

National Institute of Justice  
United States Department of Justice  
Washington, D. C. 20531

11/23/84

# THE 1981 JAIL REPORT:

## Minors Detained in California Jails and Lockups in 1981

U.S. Department of Justice  
National Institute of Justice

This document has been reproduced exactly as received from the person or organization originating it. Points of view or opinions stated in this document are those of the authors and do not necessarily represent the official position or policies of the National Institute of Justice.

Permission to reproduce this copyrighted material has been granted by

California Youth Authority

to the National Criminal Justice Reference Service (NCJRS).

Further reproduction outside of the NCJRS system requires permission of the copyright owner.

OCTOBER, 1982

State of California

DEPARTMENT OF THE YOUTH AUTHORITY

DIVISION SEARCH

Division of Field Service

90150



State of California  
EDMUND G. BROWN JR.  
GOVERNOR

Youth and Adult Correctional Agency  
HOWARD WAY  
SECRETARY



## Department of the

## Youth Authority

RONALD W. HAYES, CHIEF  
Field Services Division

CARL F. JESNESS, Ph.D., RES. MGR. III  
Program Research & Review Division

### STAFF

#### Program Research & Review Division:

Robert F. Wedge, Author  
Research Analyst II

Jackie Hummel  
Statistical Clerk

Mildred Ivanovich  
Office Assistant II

\*\*\*\*\*

#### Field Services Division:

Shirley Houser  
Assoc. Gov. Program Analyst

Charlene Lopez  
Office Technician (General)

\*\*\*\*\*

Lily Wong  
Graphic Artist

ANTONIO C. AMADOR,  
DIRECTOR

GEORGE R. ROBERTS,  
CHIEF DEPUTY DIRECTOR

FRANCISCO J. ALARCON,  
Deputy Director  
**ADMINISTRATIVE SERVICES  
BRANCH**

JAMES C. BARNETT,  
Deputy Director  
**PREVENTION AND COMMUNITY  
CORRECTIONS BRANCH**

WILBUR A. BECKWITH  
Deputy Director  
**PAROLE SERVICES BRANCH**

C. A. TERHUNE,  
Deputy Director  
**INSTITUTIONS AND CAMPS  
BRANCH**

## TABLE OF CONTENTS

	Page No.
Data Collection System .....	1
The 1981 Annual Jail Survey ..... <b>NCJRS</b> .....	2
Detentions in Excess of 24 Hours ..... <b>DATA 24 1981</b> .....	7
Summary of Juvenile Detentions by County .....	12
Appendix A: Annual Survey of Minors in Jails, Lockups, and Holding Facilities:..... <b>ACQUISITIONS</b> .....	15
Appendix B: Monthly Report of Juvenile Detentions in Excess of 24 Hours .....	17
Appendix C: Juvenile Detentions 1976 - 1981 For All Facilities, Grouped by Counties .....	19
Appendix D: Juveniles Confined in Jails or Lockups For More than 24 Hours - 1981 Calendar Year .....	141

## LIST OF TABLES

### Table

1 1981 Survey: Distribution and Response .....	3
2 Number of Juvenile Detentions Reported on the 1981 Annual Survey .....	3
3 Total Detentions of Any Length of Time Reported 1976 - 1981 .....	6
4 Minors Detained in Excess of 24 Hours in 1981 .....	8
5 Minors Detained in Excess of 24 Hours in 1981: Length of Stay and Type of Release .....	9
6 Minors Reported Detained in Excess of 24 Hours 1976 to 1981 .....	10
7 Summary of Juvenile Detentions in 1981 by County .....	13

## 1981 Report on Minors in Jails

This report is one of a series of annual reports presenting data on the number of minors detained in California's local jails and lockups. Since 1976, these data have been collected by the Department's Prevention and Community Corrections Branch, and annual reports have been prepared by the Program Review and Research Division (formerly the Division of Research). The purpose of these reports has been to provide the best available data on the number of minors detained in jails. Other sources of these data are quite limited. The State Board of Corrections biannually publishes data on adult detentions, with no count of minors. The Bureau of Criminal Statistics annually publishes a one-day count of the number of juveniles held in local facilities.

### Data Collection System

In 1976, the Youth Authority developed two forms to serve as the basis of a system for collecting data on the number of minors detained in jails.

Annual Survey. The annual survey is distributed to all city and county law enforcement agencies that may have a detention capability. The survey asks two basic questions: 1) how many minors were securely detained for any length of time during the year; and 2) were any minors detained for more than 24 hours. When a facility indicates that detentions in excess of 24 hours occurred, P&CC schedules a jail inspection, as mandated by the Welfare and Institutions Code, to determine whether the facility meets the legal standards required for this type of detention. See Appendix A for the 1981 Annual Survey Form.

Monthly Report. In addition to receiving an inspection, those facilities having held minors over 24 hours are required to report monthly the number of such detentions, the reasons for detention, the length of stay in detention, and the dispositions at release. The form developed for this purpose is the Monthly Report of Juvenile Confinements in Jails or Lockups (see Appendix B).

The next section presents the results of the 1981 annual survey of jails and lockups. A following section presents summary data based on the monthly reports of minors held over 24 hours.

#### The 1981 Annual Jail Survey

The 1981 annual survey was sent to 530 law enforcement agencies and facilities. Over a period of seven months all 530 surveys were returned or accounted for.<sup>1</sup>

Table 1 lists the number of surveys distributed and the number of agencies that reported they detained one or more minors during 1981. Of the 530 law enforcement agencies, 296 reported that they held one or more minors for at least some length of time (including 24 agencies that said they detained minors but were unable to provide a count). These numbers are very similar to those reported for 1980.

<sup>1</sup>For the year 1981, it was determined that 50 agencies (mostly small town/city police departments had no facilities for detention. These agencies will be deleted from the annual survey process.

TABLE 1  
1981 Survey: Distribution and Response

	Total	Sheriff	Police
Surveys distributed	530	163	367
Agencies with no facilities (deleted from survey)	50	14	36
Agencies reporting no detentions	184	74	110
Agencies reporting one or more detentions	296	75	221
Agencies that detained but could not provide numbers (included in above)	24	2	22

Reported detentions. During 1981, there were 121,317 reported detentions of minors, with 78% of the detentions being in police facilities and 22% in sheriff's facilities. This number represents a 7% decrease from the number of detentions reported on the 1980 survey (130,164).

TABLE 2  
Number of Juvenile Detentions  
Reported on the 1981 Annual Survey

	n	%
Total Detentions	121,317	100.0
Males <sup>a</sup>	65,764	80.7
Females	15,774	19.3
In Sheriff's facilities	26,641	22.0
In Police facilities	94,676	78.0

<sup>a</sup>Number of males and females do not equal total because some facilities did not provide data on detentions by sex.



Definition of secure detention. What is meant by secure detention has been subject to several variations and interpretations since the first survey in 1976. Law enforcement officials have interpreted it in various ways, from encompassing every juvenile arrested, to a more narrow definition that includes only youths sentenced or remanded to jail by a judge.

The definition, as intended by CYA, falls somewhere between these two extremes. It is recognized that, in the normal course of police work, when a minor is arrested, he is usually taken into custody. This is not considered secure detention. Furthermore, many if not most arrested minors are taken to the stationhouse for investigation and/or booking. This act, in itself, is not secure detention. Many minors taken to the station may be held from 15 minutes to several hours while investigation/booking is completed or while awaiting transfer to a juvenile hall or release to parents. Depending on where the minor is physically placed during this period, this may or may not constitute secure detention. If the minor is held in a room or enclosure, and if the door or entrance is locked, he is considered securely detained. This may occur in a regular jail cell, a holding cell, a holding room, a tank, a cage, or whatever.

On the back of the 1981 Annual Survey, the following definition was provided:

"Secure detention is defined as any situation in which a minor is booked, admitted, entered, or held in a secure facility behind a locked door, gate, or fence. Secure detention includes placement of a minor in a temporary holding room (locked) or holding cell, even if for only a brief period while awaiting transfer to another facility or to be picked up by parents. Secure detention does not include holding in open reception areas, interrogation rooms, or public areas of a station, facility, or police car."

While this definition was thought to be clear and specific, it apparently is not. Many agencies have not understood the definition and have included

in their count of "secure detentions" the total number of youths arrested. In some cases, the number of reported detentions equaled or even exceeded the number of juvenile arrests reported by the agencies to BCS. This fact has inflated the figures on secure detentions. While it is a fact that the reported figure represents the number of minors taken into custody and perhaps even represents the number taken to the station, it probably does not reflect the true number of secure detentions as defined above.

The remedy to this problem is unclear. Many agencies do not even keep records of how many minors they place in cells or holding rooms. As a result, these agencies either estimate the number of secure detentions, or report total arrests. Therefore, because the definition of secure detention is not universally understood, and because many law enforcement agencies do not maintain precise data, it is probably not possible to obtain a totally accurate count of all minors detained in jails or lockups.

Trends in temporary detentions. Table 3 contains the results of the annual surveys from 1976 to 1981. In comparing the number of detentions reported annually, close attention should be paid to the table footnotes. The fact that the number of temporary detentions have fluctuated over time is probably inherent in the various inconsistencies in the reporting. It is probably safe to say that around 100,000 minors have been temporarily detained in jails and lockups each year since 1976, and that there has been no apparent significant increase or decrease in the number of detentions.

Appendix C contains 1976 to 1981 Annual Survey results for each individual agency, grouped by county. An effort has been made to identify those instances when an agency may have reported arrests rather than secure detentions, resulting in an inflated number of reported detentions.

TABLE 3

Total Detentions of Any Length of Time Reported  
1976-1981

Year	No. of Facilities	Detentions
1976	286	166,224 <sup>a</sup>
1977	284	144,316 <sup>b</sup>
1978	253	89,114 <sup>c</sup>
1979	282	114,174 <sup>d</sup>
1980	292	130,346 <sup>e</sup>
1981	296	121,317 <sup>f</sup>

<sup>a</sup>In this first annual survey, secure detention was not defined in the instructions. As a result, many agencies reported total arrests rather than detentions.

<sup>b</sup>Note <sup>a</sup> also applies to the 1977 survey data. Many agencies reported arrests. The above decrease from 1976 to 1977 is parallel to a general statewide decrease in arrests.

<sup>c</sup>The 1978 survey instructions were revised to include the words confinement and secure detention. The numbers reported probably more accurately reflect detentions. However, the term "secure detentions" caused some holding facilities to fail to report their detentions. Note the decrease in the number of reporting facilities, from 284 to 253.

<sup>d</sup>A complete definition of secure detention was included on the 1979 survey. The reported figures are more accurate than in either 1976 or 1977. The increase in detentions from 1978 to 1979 is nearly entirely attributable to an increase in the number of facilities that reported.

<sup>e</sup>In 1980, the definition of secure detention was again revised. The increase in detentions is due to the fact that the 19 precincts of the Los Angeles Police Department reported detentions in 1980 whereas they did not in 1979.

<sup>f</sup>The definition of secure detention was unchanged in 1981. The 19 precincts of the Los Angeles Police Department are included among those agencies reporting detentions.

Detentions of status offenders. The 1981 survey asked whether the agency had detained status offenders under the provisions of the Welfare and Institutions Code Section 207c and, if so, how many. There were 104 agencies that reported that they had held a total of 2,978 status offenders in secure detention for some period of time.

Detentions in Excess of 24 Hours.

This section summarizes the data reported on YA Form 10.402, "Monthly Report of Juvenile Confinements in Jails or Lockups." There were 27 agencies that submitted monthly reports on 1,419 minors held over 24 hours. An additional eight agencies submitted forms during 1981, but none of these held a minor over 24 hours and in each case reported zero detentions. Table 4 does not include data on 554 detentions by the Los Angeles County Sheriff's Department. Because of problems with their computer, they were unable to report detailed data. The data in Table 4 are for 24 agencies.

Males were detained more often than females by a ratio of 9 to 1. Two-thirds of the detainees were either 16 or 17 years-old, and 7.8% were under 14 years of age. While a felony offense was shown as the reason for detention in 54.1% of the cases, 28.0% of the minors were held over 24 hours on a misdemeanor charge. Only seven minors were indicated to be an adult court remand. It is believed that this figure should be much higher, and a number of remanded cases were probably listed as being held on felony charges.



TABLE 4

Minors Detained in Excess of 24 Hours in 1981  
(Does Not Include Data From Los Angeles Sheriff's Department)<sup>a</sup>

	No.	%
Total Detentions <sup>b</sup>	865	100.0
Sex: Male	774	89.5
Female	90	10.4
Age: 17	374	43.2
16	202	23.3
15	127	14.7
14	91	10.5
13	42	4.9
12 or under	25	2.9
Reason for detention:		
Felony	468	54.1
Adult court remand	7	0.8
CYA detainee	15	1.7
Misdemeanor	242	28.0
601 W&I	31	3.6
Other	102	11.8

<sup>a</sup>Due to problems with their computer, the Los Angeles County Sheriff's Department was unable to report sex, age, or reason for detention for any of the 554 minors detained in excess of 24 hours.

<sup>b</sup>Numbers may not add to total of 865 because of some incomplete reporting by some agencies.

Table 5 summarizes data on length of stay and type of release for minors detained for more than 24 hours. Once again, Los Angeles County Sheriff's Department data are not available.

The average length of stay in detention was 8.9 days. However, the median was 1.9 days, meaning that half the cases stayed 1.9 days or less. As for the type of release, 46.2% were released from jail to the custody of a juvenile hall or some other jurisdiction, 6.5% were released with no charges, and 3.8% were released after having served a sentence.

TABLE 5

Minors Detained in Excess of 24 Hours in 1981:  
Length of Stay and Type of Release

	No.	%
Total Releases <sup>a</sup>	870	100.0
Length of Stay:		
24 to 48 hours	474	54.5
49 to 72 hours	109	12.5
73 to 96 hours	64	7.4
97 to 120 hours	37	4.2
6 to 8 days	51	5.9
9 to 11 days	20	2.3
12 to 14 days	15	1.7
15 or more days	100	11.5
Average LOS = 8.9 days		
Median LOS = 1.9 days		
Type of Release <sup>b</sup>		
To Juvenile Hall	226	26.0
To other jurisdiction	176	20.2
To parents or probation	315	36.2
Released, served sentence	33	3.8
Released, no charges	57	6.5
Other releases	59	6.8

<sup>a</sup>Does not include information on minors released from Los Angeles County Sheriff's facilities.

<sup>b</sup>Numbers in release categories do not add to total releases due to errors on some forms.

Trends in detentions in excess of 24 hours. Table 6 presents data on 24-hour-plus detentions for the years 1976 to 1981. There were 1,419 detentions in excess of 24 hours reported in 1981. This number is somewhat lower (9%) than the 1,560 reported in 1980. The 1981 total represents a 59% decrease from the number of detentions in 1976. It is not possible to determine how much of this decrease is factual. During the earlier reporting years, errors were made in completing monthly reports which resulted in an overcount of detentions.

TABLE 6  
Minors Reported Detained in Excess of 24 Hours  
1976 to 1981

Year	No. of Facilities	24-Hour Detentions
1976	52	3,476 <sup>a</sup>
1977	42	2,203 <sup>b</sup>
1978	41	2,146 <sup>c</sup>
1979	48	2,160 <sup>d</sup>
1980	42	1,560 <sup>e</sup>
1981	27	1,419 <sup>f</sup>

<sup>a</sup>In 1976, data were collected only for the six-month period July to December. The figure is an estimate for the full year.

<sup>b</sup>The system was in effect for the full year 1977. Because the system was new, data were accepted at "face value" and errors were not suspected or detected. The decrease from 1976 to 1977 is probably factual, since AB3121 became effective in 1977 banning the detention of status offenders.

<sup>c</sup>In 1978, errors began to be detected and corrected where possible.

<sup>d</sup>Errors became more obvious in 1979, and CYA increased efforts to correct errors. However, it is probable that the detention figure is "off-base" since some minors may have been counted twice.

<sup>e</sup>The situation remained the same in 1980, with a high error rate. How much of the decrease in detentions is factual is unknown. It should be noted that there were fewer facilities reporting in 1980.

<sup>f</sup>Although some errors remain in the 1981 data, the degree of accuracy is presumed to be much improved.

Nevertheless, the decreasing trend in numbers of detentions seems to indicate that few minors are being held in jails for periods exceeding 24 hours.

Note also that the number of reporting agencies decreased from 42 in 1980 to 27 in 1981. Although 27 agencies submitted monthly reports on 24-hour detentions, responses to the 1981 Annual Survey showed that a total of 39 agencies detained one or more minors in excess of 24 hours. These 39 agencies are listed below, with a notation of whether or not they submitted information via monthly reports.

Agencies Reporting Detention  
of Minors Over 24 Hours on  
the 1981 Annual Survey

Submitted Data Via the  
Monthly Report Form

Calaveras County Jail	Yes
Colusa County Jail	Yes
Contra Costa County Jail	No (n = 2)
Del Norte County Jail	No (n = 1)
El Dorado County Jail - Placerville	Yes
Coalinga Police Department	No (n = 2)
Glenn County Jail	Yes
Inyo County Jail	Yes
Kings County Jail	Yes
Lassen County Jail	Yes
Los Angeles Sheriff - Central Jail	Yes
Los Angeles Sheriff - Sybil Brand	Yes
Los Angeles Sheriff - USC Med.	Yes
Long Beach Police Department	Yes
Santa Monica Police Department	No (n = unknown)
Torrance Police Department	No (n = unknown)
Inglewood Police Department	Yes
Mariposa County Jail	Yes
Mendocino County Jail	Yes
Mendocino County Rehab. Center	Yes
Modoc County Jail	Yes
Mono County Jail	No (n = unknown)
Orange County Jail	Yes
Riverside County Jail - Indio	Yes
Riverside County Jail - Blythe	Yes
San Bernardino - Glen Helen	Yes
San Bernardino - Barstow Station	Yes
San Bernardino - Victorville Station	No (n = unknown)



Agencies Reporting Detention  
of Minors Over 24 Hours on  
the 1981 Annual Survey

San Francisco Sheriff - Hospital Ward  
San Joaquin County Jail  
San Luis Obispo County Jail  
Santa Barbara County Jail  
Santa Clara County Jail  
Santa Clara Women's Facility  
Sutter County Jail  
Tehama County Jail  
Trinity County Jail  
Tulare County Jail  
Tuolumne County Jail

Submitted Data Via the  
Monthly Report Form

No (n = unknown)  
Yes  
No (n = 2)  
No (n = 3)  
Yes  
Yes  
No (n = 1)  
No (n = 1)  
Yes  
Yes  
Yes

Some of the agencies (that did not submit monthly reports) provided the number of 24-hour-plus detentions on the annual survey. These numbers are shown in parentheses in the above list. These were apparently infrequent or one-time occurrences, such as a court-ordered detention. Had all of these agencies reported on the monthly forms, it would not have appreciably increased the total number.

Summary of Juvenile Detentions by County

Table 7 summarizes the number of detentions, both temporary and 24-hour-plus, by county. The total of 121,317 detentions were reported by 296 agencies in 57 counties (all but Alpine, which has no detention capability). The 1,419 detentions in excess of 24 hours were reported by 27 facilities in 19 counties. Detentions in excess of 24 hours were reported (on the annual survey) by an additional 11 agencies, representing seven additional counties.

TABLE 7

Summary of Juvenile Detentions in 1981 By County

Counties	Detentions of Any Length		Detentions Over 24 Hours	
	No. of Facilities	Total Detentions	No. of Facilities	Total Detentions
Alameda	13	11,194	0	0
Alpine	0	0	0	0
Amador	2	3	0	0
Butte	1	133	0	0
Calaveras	1	88	0	0
Colusa	1	78	1	52
Contra Costa	11	2,193	1	78
Del Norte	1	1	0	0
El Dorado	3	210	0	0
Fresno	7	511	1	1
Glenn	1	108	0	0
Humboldt	3	256	1	108
Imperial	4	492	0	0
Inyo	2	220	0	0
Kern	6	557	1	44
Kings	2	232	0	0
Lake	1	93	1	15
Lassen	1	71	0	0
Los Angeles	83	71,042	1	70
Madera	1	5	5	624
Marin	7	40	0	0
Mariposa	1	85	0	0
Mendocino	4	112	1	25
Merced	3	103	2	2
Modoc	1	40	0	0
Mono	2	79	1	21
Monterey	6	842	0	0
Napa	2	53	0	0
Nevada	1	91	0	0
Orange	21	10,579	0	0
Placer	2	207	1	48
Plumas	1	N/A	0	0
Riverside	9	1,861	0	0
Sacramento	3	59	2	228
San Benito	1	138	0	0
San Bernardino	14	4,223	0	0
San Diego	7	4,386	2	36
San Francisco	1	10	0	0
San Joaquin	5	671	0	0
San Luis Obispo	5	359	1	9
San Mateo	9	622	0	0
Santa Barbara	5	458	0	0
Santa Clara	10	4,141	0	0
Santa Cruz	1	221	2	21
Shasta	1	50	0	0
Sierra	1	12	0	0
Siskiyou	2	2	0	0
Solano	2	179	0	0
Sonoma	8	1,459	0	0
Stanislaus	3	353	0	0
Sutter	1	1	0	0
Tehama	1	1	0	0
Trinity	1	31	0	0
Tulare	5	899	1	6
Tuolumne	1	136	1	5
Ventura	3	1,293	1	26
Yolo	1	24	0	0
Yuba	1	10	0	0
Grand Total	296	121,317	27	1,419

ANNUAL SURVEY OF MINORS IN JAILS, LOCKUPS,  
AND HOLDING FACILITIES

\_\_\_\_\_  
(COLS. 1-7)

AGENCY

ADDRESS

PLEASE SEE REVERSE FOR DEFINITIONS AND INSTRUCTIONS

I. STATEMENT REGARDING DETENTION OF MINORS 17 YEARS OR YOUNGER.  
(See definition of "detention" on reverse side.)

DURING 1981, IN THIS FACILITY: (Check one box)

1. ☐ No minors were detained.  
2. ☐ Minors were detained, but never for more than 24 hours.  
3. ☐ Minors were detained, and one or more minors were detained over 24 hours.  
(3)

II. NUMBER OF MINORS DETAINED, FOR ANY LENGTH OF TIME, DURING 1981:

\_\_\_\_\_  
(9-12) Total minors detained

\_\_\_\_\_  
(13-16) Males

\_\_\_\_\_  
(17-20) Females

III. SPECIAL SURVEY QUESTION:

1. ☐ YES One or more minors described under W & I Code Section 601 (Status Offenders)  
were temporarily detained under the provisions of W & I Code Section 207c.  
2. ☐ NO  
(21)

\_\_\_\_\_  
(22-25) If yes, total number 601 WIC minors detained during 1981.

Comments

NAME & TITLE (TYPE OR PRINT)

DATE

SIGNATURE

AREA CODE & TELEPHONE NUMBER



### INSTRUCTIONS AND DEFINITIONS

The purpose of this survey is (1) to identify those facilities that detained minors in excess of 24 hours during 1981, and (2) to determine the number of minors placed in secure detention for any length of time during 1981.

#### DEFINITION OF SECURE DETENTION

Secure detention is defined as any situation in which a minor is booked, admitted, entered, or held in a secure facility behind a locked door, gate, or fence. Secure detention includes placement of a minor in a temporary holding room (locked) or holding cell, even if for only a brief period while awaiting transfer to another facility or to be picked up by parents. Secure detention does not include holding in open reception areas, interrogation rooms, or public areas of a station, facility, or police car.

#### INSTRUCTIONS FOR COMPLETING FORM

I. Statement Regarding Detention of Minors: Read each of the three statements under Item I and check the one box that correctly applies to your situation. If no minors were detained, as described in the above definition, check the first box, sign the form, and return it.

If you detained one or more minors for any length of time, complete the remainder of the form, sign, and return it.

II. Number of Minors Detained: From your records, or to the best of your knowledge, enter the number of minors detained during 1981.

III. Special Survey Question: The Youth Authority needs to determine which facilities detain minors under the provisions of W & I Code Section 207c, pertaining to status offenders. Check yes or no regarding whether status offenders have been temporarily detained in your facility during 1981.

When you have completed and signed this form, please return it to the following address:

(When properly folded this form may be used for mailing)

Department Of The Youth Authority  
Region II - Division Of Field Services  
7171 Bowling Drive, Suite 320  
Sacramento, CA. 95823

### APPENDIX B

STATE OF CALIFORNIA  
DEPARTMENT OF THE YOUTH AUTHORITY  
MONTHLY REPORT OF JUVENILE DETENTIONS IN EXCESS OF 24 HOURS  
YA 10.402 (REV. 2/82)

(1-5) CODING REFERENCE  
(6-7) MONTH  
(8-9) YEAR

REPORT DATA ONLY ON MINORS HELD IN  
EXCESS OF 24 HOURS.  
Before marking form, see instructions on reverse.

NAME OF DEPARTMENT

NAME OF FACILITY

FACILITY ADDRESS

ZIP CODE

(CARD 1)

NEW DETENTIONS OVER 24 HOURS THIS MONTH:

1.	<input type="checkbox"/> (10-12)	OF THESE	<input type="checkbox"/> (13-15) were males	<input type="checkbox"/> (16-18) were females
2.	On <input type="checkbox"/> (19-20)	days during the month this facility exceeded its authorized male juvenile detention capacity		
3.	On <input type="checkbox"/> (21-22)	days during the month this facility exceeded its authorized female juvenile detention capacity.		
4.	Age of minors booked this month and held in excess of 24 hours.			
a.	<input type="checkbox"/> (23-25)	12 years or under		
b.	<input type="checkbox"/> (26-28)	13 years		
c.	<input type="checkbox"/> (29-31)	14 years		
d.	<input type="checkbox"/> (32-34)	15 years		
e.	<input type="checkbox"/> (35-37)	16 years		
f.	<input type="checkbox"/> (38-40)	17 years		
5.	Reason for detention of minors booked into detention this month and held over 24 hours. For multiple violations, use most serious offense, or court order or remand (use only one reason per minor).			
a.	<input type="checkbox"/> (41-43)	Felony, Section 707(b) W&I Code (see Instructions)		
b.	<input type="checkbox"/> (44-46)	Other felony, not included above		
c.	<input type="checkbox"/> (47-49)	Misdemeanor violation		
d.	<input type="checkbox"/> (50-52)	601 W&I Code violation		
e.	<input type="checkbox"/> (53-55)	Certification to adult court		
f.	<input type="checkbox"/> (56-58)	CYA detainees		
g.	<input type="checkbox"/> (59-61)	Other reason		

D.P. USE  
1  
COL. 80

(CARD 2)

MINORS RELEASED AFTER 24 OR MORE HOURS DETENTION:

6.	Of those minors released during this month, how long were they detained (from the first day of detention)? Include minors held over from previous month(s), but do not include any minor still in detention at end of current month.	
a.	<input type="checkbox"/> (10-12)	24 - 48 hours (2nd Day)
b.	<input type="checkbox"/> (13-15)	48 - 72 hours (3rd Day)
c.	<input type="checkbox"/> (16-18)	72 - 96 hours (4th Day)
d.	<input type="checkbox"/> (19-21)	96 - 120 hours (5th Day)
e.	<input type="checkbox"/> (22-24)	6 - 8 Days
f.	<input type="checkbox"/> (25-27)	9 - 11 Days
g.	<input type="checkbox"/> (28-30)	12 - 14 Days
h.	<input type="checkbox"/> (31-33)	15 or more Days
(1)	<input type="checkbox"/> (34-36)	List number of days for all minors in Line h (example: 3 detentions at 20 days each equals 60 days)
7.	Release dispositions of minors identified in Question 6.	
a.	Transfers to other detention facilities.	
(1)	<input type="checkbox"/> (37-39)	Transfers to juvenile hall
(2)	<input type="checkbox"/> (40-42)	Transfers to other jurisdictions (Commitments to state, county camps, other law enforcement agencies, etc.)
b.	Releases with no further detention.	
(1)	<input type="checkbox"/> (43-45)	Released - no charge or no further proceedings
(2)	<input type="checkbox"/> (46-48)	Released to probation or parents/guardians for further non-custody proceedings.
(3)	<input type="checkbox"/> (49-51)	Released - served sentence
(4)	<input type="checkbox"/> (52-54)	Other releases

D.P. USE  
2  
COL. 80

I hereby certify to the best of my knowledge and belief, in compliance with Section 209 of the Welfare & Institutions Code, that the above is a true and accurate accounting of all persons under 18 years confined in this jail or lockup for a period exceeding 24 hours during the month for which I am reporting.

SIGNATURE OF REPORTING PERSON

TITLE

TELEPHONE NUMBER

# INSTRUCTIONS FOR COMPLETING MONTHLY REPORT OF JUVENILE DETENTIONS

**Who Shall Report:** Every jail or lockup that books and detains a minor *in excess of 24 hours* during a calendar month shall report for that period.

**Instructions:** Place numbers clearly inside appropriate boxes.

Example: Month   Year

Example: Total Detentions (Item 1)

**Item 1:** Record only the number of minors booked into detention during the current month and who remained over 24 hours. Do *not* include minors booked on a previous month and held over in the current month.

**Items 2 and 3:** Capacity Standards: Normally, during inspection, the Department of the Youth Authority rates facility capacity in accordance with established minimum standards. If capacity for the detention of minors for your facility is unknown, a copy of these standards may be obtained by writing to: Chief, Division of Field Services, Department of the Youth Authority, 4241 Williamsborough Drive, Rm. 219, Sacramento, CA 95823.

**Item 5:** Record one primary reason that each minor was detained for more than 24 hours: whether being held on felony or misdemeanor charges, detained or sentenced on court order, remanded, a CYA hold, or other.

## Felony, Section 707(b) Offenses

Murder	Kidnapping for Robbery
Arson of an Inhabited Building	Assault With Intent to Commit Murder
Armed Robbery	Attempted Murder
Forcible Rape	Assault With Firearm or Destructive Device
Kidnapping for Ransom	Assault With Force Likely to Produce Great Bodily Injury
Kidnapping With Bodily Harm	Discharge of a Firearm Into an Occupied Building

**Item 6:** Record the length of time in secure detention for each minor released during the month. Begin count from first day of detention, even if detention originally occurred during a previous month. For those minors detained 15 or more days, list the number of minors in 6(h). Record the sum of all detention days for these minors in 6(i). Do not include any minors still in detention at end of month.

**Item 7:** Record all release dispositions. Section 7a is for minors transferred to another custody situation; 7b is for minors released from custody. Minors released by citation, court order, or other policy for further legal processing should be listed in 7b(2). "Other releases"; 7b(4) might include such as "released to foster care", etc.

Note: The number of detained minors listed in Items 1 to 5 need not necessarily be the same as the number of released minors listed in Items 6 and 7, because some minors detained this month may not be released and some minors released this month may have been held from a previous month.

Any questions regarding use of this form may be referred to Division of Field Services — (916) 323-3321.

FOLD, STAPLE & MAIL.

Chief, Division of Field Services  
Department of the Youth Authority  
4241 Williamsborough Drive, Rm. 219  
Sacramento, CA 95823

## APPENDIX C

Juvenile Detentions 1976 - 1981

For All Facilities,

Grouped by Counties



ALAMEDA COUNTY

Juveniles Detained for Any Length of Time

Agency/Facility	1976	1977	1978	1979	1980	1981	Notes
Sheriff's Dept.							
County Jail	0	0	0	0	55	142	
Santa Rita Rehab.	3	0	3	6	0	5	
City Police Depts.							
Alameda	0	0	0	0	0	580	b
Albany	191*	227*	253*	251*	316*	314*	a
Berkeley	3	0	0	0	0	0	
Fremont	0	1,170	N/A	2,102	2,215	1,827	
Oakland Y.S.D.	5,629	6,543	N/A	3,926	3,577	4,728	a
San Leandro	1,271*	1,191*	1,047*	941*	N/A	1,223*	a
Emeryville	53*	28*	8	N/A	50*	49*	a
Hayward	0	507	1,348*	1,561*	665	705	a
Livermore	401	454*	451*	430*	0	N/A	a,c
Piedmont	N/A	0	0	0	N/A	20	
Newark	0	0	N/A	0	729*	1,322*	a
Pleasanton	N/A	0	0	327	615*	279	a
Union City	485*	445*	0	0	N/A	0	a
County Totals							
Detaining Facilities	10	8	9	9	11	12	
Total Detentions	8,036	10,565	3,110	9,544	8,222	11,194	

N/A = Reported that minors were detained but number unavailable.

<sup>a</sup>Figures with asterisks appear to include all arrests and not be limited to secure detentions only.

<sup>b</sup>In 1978, Alameda PD commented that minors were held in locked rooms for up to two hours but were not considered "locked up."

<sup>c</sup>In 1980, Livermore PD reported that they no longer detain minors.

Preceding page blank

ALAMEDA COUNTY

Juveniles Detained in Excess of 24 Hours

Facility	1976	1977	1978	1979	1980	1981
Sheriff's Dept.						
Santa Rita	1	0	1	4	1	0

Comments

Both the number of detaining facilities and the number of reported detentions have fluctuated markedly in Alameda County. Detentions have ranged from 8,000 in 1976 to 3,000 in 1978 to 11,000 in 1981. These changes are more the result of inconsistencies in reporting rather than changes in detention practices. For instance, the agency normally reporting the largest number of detentions, Oakland Youth Services Division, reported that the number was not available in 1978, which explains the low county-wide total for that year. In 1981, the year with the highest number of detentions, there were six reporting facilities that in 1978, reported either N/A or no detentions, which explains the large increase in detentions in 1981.

The total detentions for Alameda County are probably overestimates. Each year, three or four of the reporting facilities apparently reported total arrests rather than the number of secure detentions.

ALPINE COUNTY

Juveniles Detained For Any Length of Time

Agency/Facility	1976	1977	1978	1979	1980	1981
Sheriff's Dept.						
County Jail	11	3	8	0	0	0
Bear Valley Sta.	0	0	0	0	5	0
County Totals						
Detaining Facilities	1	1	1	0	1	0
Total Detentions	11	3	8	0	5	0

NO DETENTIONS IN EXCESS OF 24 HOURS.

Comments

The Alpine County Sheriff's Dept. maintains a holding facility only. Minors deemed in need of detention are transported to facilities in Calaveras or El Dorado Counties.

AMADOR COUNTY

Juveniles Detained For Any Length of Time

Agency/Facility	1976	1977	1978	1979	1980	1981	Notes
Sheriff's Dept. County Jail	78	62	76	81	32	N/A	a
City Police Depts.							
Ione	0	0	0	0	0	0	
Jackson	0	0	15	17	7	3	
Plymouth	0	0	0	0	0	0	
Sutter Creek	0	0	0	0	0	0	
County Totals							
Detaining Facilities	1	1	2	2	2	2	
Total Detentions	78	62	91	98	39	3	

N/A = Reported that minors were detained but number was unavailable.

<sup>a</sup>The county jail was decertified for the detention of minors in March 1980.  
A new facility is under construction, perhaps to be opened in early 1983.

Juveniles Detained in Excess of 24 Hours

Facility	1976 <sup>b</sup>	1977	1978	1979	1980	1981
County Jail	8	0	7	1	0	0

<sup>b</sup>In 1976, data were collected for July-December only.



AMADOR COUNTY

Comments

The county jail and a holding cell in Jackson represent the only detention facilities used in Amador County. From 1976 to 1979, the number of detentions was consistent (or would have been had Jackson P.D. reported in the first two years). Decertification of the county jail led to a large decrease in detentions in 1980. Detentions in excess of 24 hours have been infrequent. Most minors deemed in need of longer detention are transported to facilities in El Dorado County. The city police departments normally book minors at the county jail (in the case of felonies) or turn them over to the probation department.

BUTTE COUNTY

Juveniles Detained For Any Length of Time

Agency/Facility	1976	1977	1978	1979	1980	1981	Notes
Sheriff's Dept.							
County Jail	414	196	6	0	0	133	
City Police Depts.							
Chico	0	0	0	0	0	0	
Gridley	0	0	0	0	0	0	
Biggs	0	0	0	0	0	0	a
County Totals							
Detaining Facilities	1	1	1	0	0	1	
Total Detentions	414	196	6	0	0	133	

Note. Deleted from the annual survey list is Oroville P.D.

<sup>a</sup>As of 1-1-82, the City of Biggs plans to contract with Butte Sheriff's Office for law enforcement services.

Juveniles Detained in Excess of 24 Hours

Facility	1976	1977	1978	1979	1980	1981	
County Jail	0	11	6	0	0	0	

Comments

Data reported by the Sheriff's County Jail indicate a reduction in detention from 414 in 1976 to 0 in 1979 and 1980, and in 1981 reported 133 temporary detentions held only long enough to complete the booking process. Inconsistencies in reporting probably account for these variations and the figures may be under-reported in 1978-1980.

CALAVERAS COUNTY

Juveniles Detained for Any Length of Time

Agency/Facility	1976	1977	1978	1979	1980	1981	Notes
County Jail							
For Any Time	165	48	126	121	98	88	a
24-Hours Plus	46	42	67	67	28	52	b
Angels Camp P.D.	0	0	0	0	0	0	

<sup>a</sup>Annual survey for 1977 included number of detentions for July-December only.

<sup>b</sup>Data on 24-hour plus detentions in 1976 collected during July-December only.

Comments

The county jail is the only detention facility in Calaveras County. The number of detentions for any time has decreased since 1976.

COLUSA COUNTY

Juveniles Detained For Any Length of Time

Agency/Facility	1976	1977	1978	1979	1980	1981
Sheriff's Dept.						
County Jail	68	90	89	101	109	78
City Police Depts.						
Williams	0	0	0	0	0	0
County Totals						
Detaining Facilities	1	1	1	1	1	1
Total Detentions	68	90	89	101	109	78

Note. Deleted from the annual survey list is Colusa P.D.

Juveniles Detained in Excess of 24 Hours

Facility	1976 <sup>a</sup>	1977	1978	1979	1980	1981
County Jail	46	42	30	51	55	78

<sup>a</sup>Period covers July to December only.

Comments

All detentions are in the county jail. There is no juvenile hall in Colusa County. Temporary detentions increased from 1976 to 1980, then decreased somewhat in 1981. In fact, there were no "temporary" detentions in 1981: all 78 detentions were in excess of 24 hours. The 24-hour-plus detentions decreased from 1976 to 1978, but have shown increases annually since then.

CONTRA COSTA COUNTY  
Juveniles Detained for Any Length of Time

Agency/Facility	1976	1977	1978	1979	1980	1981	Notes
Sheriff's Dept.							
County Jail	0	0	0	0	0	2	a
Branch Jail	0	0	0	0	0	0	
Rehab. Ctr.	0	0	0	0	0	-	c
Police Depts.							
Antioch	198	147	163	118	110	138	
Brentwood	117*	75*	85*	4	0	N/A	b
El Cerrito	351*	325*	249*	205*	221*	184*	b
Pittsburg	157	323*	98	101	439*	261	b
Richmond	390	715	668	441	584	N/A	
San Pablo	949*	869*	586*	706*	559*	0	b
Concord	1,645	1,214	401	1,081	1,121	885	
Pinole	N/A	0	0	1	0	135	d
Pleasant Hill	0	0	0	624*	589*	488*	b
Walnut Creek	71	0	N/A	164	N/A	N/A	
Clayton	0	0	0	0	0	0	
Kensington	0	0	0	0	0	0	
Martinez	0	0	0	0	0	0	
Hercules	NOL	NOL	NOL	NOL	62*	100	b, e
County Totals							
Detaining Facilities	9	7	7	10	8	11	
Total Detentions	3,878	3,668	2,255	3,446	3,685	2,193	

NO MINORS REPORTED DETAINED IN EXCESS OF 24 HOURS.

N/A - Reported minors were detained but number unavailable.  
NOL - Not on survey list.

<sup>a</sup>A new county jail was opened February 1981. The 1981 annual survey indicated that 2 minors were detained in excess of 24 hours. Monthly reports were not submitted.

<sup>b</sup>Figures with asterisks appear to include total arrests and not be limited to secure detentions only.

<sup>c</sup>The Sheriff's Rehabilitation Center was reported to be closed in 1981.

<sup>d</sup>The 135 detentions in 1981 were verified. The Pinole P.D. began a new policy of counting detentions that year.

<sup>e</sup>Hercules P.D. was added to survey list in 1980, at which time Hercules P.D. reported that bookings or holds were done at Pinole P.D.



CONTRA COSTA COUNTY

Comments

Even though a number of agencies appeared to report arrests rather than secure detentions, the total number of detentions decreased in 1981. Even if the Richmond P.D. had provided a figure, the 1981 total would represent a decrease.

DEL NORTE COUNTY

Juveniles Detained For Any Length of Time

Agency/Facility	1976	1977	1978	1979	1980	1981	Notes
Sheriff's Dept.							
County Jail	1	176	1	147	141	1	
City Police Depts.							
Crescent City	0	0	1	196*	0	0	a
County Totals							
Detaining Facilities	1	1	2	2	1	1	
Total Detentions	1	176	2	346	141	1	

Juveniles Detained in Excess of 24 Hours

Facility	1976	1977	1978	1979	1980	1981	Notes
County Jail	1	0	1	0	1	1	

aFigures with asterisks appear to include all arrests and not be limited to secure detentions only.

Comments

The County Jail has been inconsistent in how detention figures were reported. It appears that in 1976, 1978, and 1981, only 24-hour-plus detentions were reported on the annual survey. In 1979 the Crescent City P.D. reported 196 detentions (while reporting only 70 total arrests of juveniles to BCS). The result gives a very inaccurate measure of detention in Del Norte County. It may be estimated that around 150 minors were temporarily detained each year. An average of less than one minor per year was detained in excess of 24 hours.

EL DORADO COUNTY

Juveniles Detained For Any Length of Time

Agency/Facility	1976	1977	1978	1979	1980	1981	Notes
Sheriff's Dept.							
Placerville Jail	0	191*	3	1	0	1	a
Tahoe Division	289	221	190	263	271	197	
City Police Depts.							
South Lake Tahoe	0	218	0	0	0	0	
Placerville	0	0	6	0	8	12	
County Totals							
Detaining Facilities	1	3	3	2	2	3	
Total Detentions	289	630	199	264	279	210	

<sup>a</sup>In 1977, it appears that the county jail in Placerville reported total bookings rather than detentions.

Juveniles Detained in Excess of 24 Hours

Facility	1976 <sup>b</sup>	1977	1978	1979	1980	1981	Notes
Sheriff's Dept.							
Placerville	0	0	3	1	0	1	c
Tahoe Division	55	94	160	186	36	0	
Total	55	94	163	187	36	1	

<sup>b</sup>In 1976, data were collected only for July-December.

<sup>c</sup>During 1980, Lake Tahoe Division ceased detaining minors over 24 hours.

Preceding page blank

EL DORADO COUNTY

Comments

The temporary detention figures show a fairly consistent total, except in 1977, when two agencies appear to have reported total arrests rather than detentions. The number of minors detained in excess of 24 hours steadily increased each year from 1976 to 1979. Then, in 1980, the Lake Tahoe Division of the Sheriffs Dept. adopted a policy change under which no minors would be detained more than 24 hours. Minors have rarely been housed in the county jail in Placerville. Those few housed there were transferred from the juvenile hall as security or violence risks.

FRESNO COUNTY

Juveniles Held for Any Length of Time

Agency/Facility	1976	1977	1978	1979	1980	1981	Notes
Sheriffs Dept.							
County Jail	14	25	6	9	0	0	
Honor Farm	0	1	0	0	0	0	
City Police Depts.							
Coalinga	116	87	43	83	51	69	
Huron	0	18	9	3	4	0	
Mendota	163*	157*	120*	135*	109*	123*	a
Sanger	12	25	45	60	40	0	
Selma	0	0	0	0	0	0	
Clovis	289*	277*	281*	473*	411*	0	a
Fresno	4,151*	2,522	6	0	2,189	0	a
Kerman	103*	89*	N/A	94*	131*	112*	a
Kingsburg	0	0	69*	52*	30*	52*	a
Parlier	0	0	0	0	0	0	
Reedy	139*	151*	124*	158*	184*	155*	a
County Totals							
Detaining Facilities	8	10	10	9	9	5	
Total Detentions	4,987	3,352	703	1,067	3,149	461	

N/A - Reported that minors were detained but number not available.

Note. Deleted from the annual survey list are the following P.D.s: Orange Cove, Firebaugh, Fowler.

<sup>a</sup>Figures with asterisks appear to include total arrests and not be limited to secure detentions only.



FRESNO COUNTY

Juveniles Detained in Excess of 24 Hours

Facility	1976	1977	1978	1979	1980	1981	Notes
County Jail	2	N/A	N/A	0	0	0	
Coalinga P.D.	0	0	0	0	0	2	b

<sup>b</sup>In 1981, Coalinga P.D. reported on the annual survey that 2 minors were held in excess of 24 hours.

Comments

Although a number of the law enforcement agencies appeared to have reported arrests rather than secure detentions, the data seem to indicate a decrease in the number of reported detentions of minors in Fresno County. In previous years, as many as 10 agencies reported that they detained minors. In 1981, only 5 agencies continued to report juvenile detentions.

GLENN COUNTY

Juveniles Detained For Any Length of Time

Agency/Facility	1976	1977	1978	1979	1980	1981
Sheriffs Dept.						
County Jail	214	137	109	99	106	108
City Police Dept.						
Willows	DNR	0	DNR	0	0	0

DNR - Did Not Report.

Note. Deleted from the annual list is Orland P.D.

Juveniles Detained in Excess of 24 Hours

Facility	1976 <sup>a</sup>	1977	1978	1979	1980	1981
County Jail	112	109	71	60	63	108

<sup>a</sup>Covers July to December only.

Comments

Temporary detentions, which were all in the county jail, decreased during the first two years of data collection, and have remained at a consistent number from 1978 to 1981. The number of 24-hour-plus detentions showed a decreasing trend from 1976 through 1980, but increased again in 1981.

HUMBOLDT COUNTY

Juveniles Detained For Any Length of Time

Agency/Facility	1976	1977	1978	1979	1980	1981	Notes
Sheriffs Dept.							
County Jail	N/A	256*	8	0	133	208	a
Garberville Sta.	23	0	N/A	50	14	0	
Hoopa Sta.	65	20	21	38	30	38	
City Police Depts.							
Arcata	129	0	0	33	20	10	
Fortuna	179*	120*	0	0	0	0	a
Eureka	0	0	0	DNR	0	0	b
Rio Dell	0	0	0	0	0	0	
County Totals							
Detaining Facilities	5	3	3	3	4	3	
Total Detentions	396	396	29	121	197	256	

DNR = Did Not Report

N/A = Reported that minors were detained but number was unavailable.

Note. Deleted from the annual survey list is Ferndale P.D.

<sup>a</sup>Figures with asterisks appear to include all arrests and not be limited to secure detentions only.

<sup>b</sup>The Eureka City Jail was deactivated in 1972. Bookings are accomplished through the county jail or juvenile hall.

HUMBOLDT COUNTY

Juveniles Detained in Excess of 24 hours

Facility	1976 <sup>c</sup>	1977	1978	1979	1980	1981	Notes
County Jail	5	15	8	0	0	0	d

<sup>c</sup>In 1976, data collected for July-December only.

<sup>d</sup>The county jail was decertified for 24-hour detention of minors during 1978.

Comments

The high figures for total temporary detentions in 1976 and 1977 should be discounted because they contain total arrest data from two agencies. Considering, then, that the count of detentions in 1976 and 1977 should be lower, there has been a steady increase in the number of temporary detentions over the period. Few minors have been detained in excess of 24 hours, and since the county jail was decertified in 1978 there have been none.

IMPERIAL COUNTY

Juvenile Detentions For Any Length of Time

Agency/Facility	1976	1977	1978	1979	1980	1981	Notes
Sheriffs Dept.							
County Jail	3	9	0	0	0	0	
Honor Camp	0	0	0	0	0	0	
Winterhaven Sta.	54	29	0	0	37	20	
City Police Depts.							
Brawley	360	186	149	139	212*	206*	a
Calexico	514*	518*	379	237	201	223	a
Westmorland	18*	0	0	8	0	DEL.	a
Calipatria	24	22	73	62	83	43	
El Centro	0	0	123	N/A	0	0	b
Holtville	0	0	0	0	25	0	c
Imperial	0	0	0	0	0	0	
County Totals							
Detaining Facilities	6	5	4	5	5	4	
Total Detentions	973	764	724	446	558	492	

NO DETENTIONS IN EXCESS OF 24 HOURS.

DEL = Agency deleted from survey list but shown in table due to a prior report of detentions.

N/A = Reported that minors were detained but number unavailable.

<sup>a</sup>Figures with asterisks appear to include all arrests and not be limited to secure detentions only.

<sup>b</sup>In 1976, El Centro reported its jail had been closed and converted to office space. In 1978, it was reported that they had a holding cell in which an estimated 1/3 of all juvenile arrests were temporarily held.

<sup>c</sup>Holtville reports that minors are held in an office area. However, they reported 25 detentions in 1980 and these were verified as secure detentions by P & CC consultant.



IMPERIAL COUNTY

Comments

The figures for total detentions in Imperial County are overestimates because two agencies probably reported total arrests rather than secure detentions. There are other inconsistencies in the reporting which detract from the accuracy of the data. However, a best estimate would indicate a slight trend for decreased detentions of minors over the period.

INYO COUNTY

Juveniles Detained For Any Length of Time

Agency/Facility	1976	1977	1978	1979	1980	1981
Sheriffs Dept.						
County Jail	133	96	84	42	85	90
City Police Dept.						
Bishop	161*	94*	12	82*	117*	130*
County Totals						
Detaining Facilities	2	2	2	2	2	2
Total Detentions	194	190	100	124	202	220

\* Figures appear to include all arrests and not be limited to secure detentions only.

Juveniles Detained in Excess of 24 Hours

Facility	1976 <sup>a</sup>	1977	1978	1979	1980	1981
County Jail	20	66	32	24	53	44

<sup>a</sup>In 1976, data were collected for July-December only.

Comments

Detentions occur primarily at the county jail. The number decreased from 1976 to 1979 and increased again in the last-two years. The number of 24-hour detentions has fluctuated from year to year.

KERN COUNTY

Juveniles Detained For Any Length of Time

Agency/Facility	1976	1977	1978	1979	1980	1981	Notes
Sheriffs Dept.							
County Jail	3	1	2	4	6	0	a
Lerdo Fac.	0	0	0	0	0	0	
Boron Sta.	0	0	0	0	0	0	
Mojave Sta.	0	0	0	0	0	0	
City Police Depts.							
Arvin	191 *	169 *	109 *	108 *	117 *	27	b
Delano	454 *	569 *	403 *	401	256	271	b
Taft	90 *	329 *	25	123 *	21	58	b
Tehachapi	N/A	5	0	N/A	23	75	
Ridgecrest	203	60	208	159	121	125	
Shafter	0	0	0	N/A	200	0	
Wasco	0	0	0	0	0	0	
Bakersfield	0	0	0	0	0	0	
China Lake	NOL	NOL	NOL	0	1	1	
County Totals							
Detaining Facilities	6	6	5	7	8	6	
Total Detentions	941	1,133	747	795	744	557	

NA = Reported minors were detained but number not available.

NOL = Not on survey list.

Note. Deleted from annual survey list are following P.D.s: California City, Maricopa, McFarland.

<sup>a</sup>The following sheriffs substations were deleted from the annual survey list in 1982: Buttonwillow, Frazier Park, Lamont, Ridgecrest, Shafter, Wasco.

<sup>b</sup>Figures with asterisks appear to include total arrests and not be limited to secure detentions only.

KERN COUNTY

Juveniles Detained in Excess of 24 Hours

Facility	1976	1977	1978	1979	1980	1981	Notes
County Jail	3	1	0 <sup>b</sup>	4	10	0	c

<sup>c</sup>In 1980, the county jail was decertified for the detention of minors. The annual survey showed a total of 6 juvenile detentions, but the monthly reports indicated 10 detentions in excess of 24 hours. The latter figure is probably incorrect.

Comments

The number of minors detained in law enforcement facilities has decreased since 1976 and 1977. Very few minors have ever been detained in excess of 24 hours. These detentions have all been ordered by the court.

KINGS COUNTY

Juveniles Detained For Any Length of Time

Agency/Facility	1976	1977	1978	1979	1980	1981	Notes
County Jail	306	189	198	219	62	39	a
Corcoran P.D.	0	0	0	250*	169*	193*	
LeMoore P.D.	0	0	0	0	5	0	
County Totals							
Detaining Facilities	1	1	1	2	2	2	
Total Detentions	306	189	198	469	236	232	

<sup>a</sup>Figures with asterisks appear to include total arrests rather than being limited to secure detentions.

Juveniles Detained in Excess of 24 Hours

Facility	1976	1977	1978	1979 <sup>b</sup>	1980	1981	Notes
County Jail	134	129	101	99	64	15	b

<sup>b</sup>In 1976, data on 24-hour detentions were only collected during July to December.

Comments

Detentions occur primarily in the county jail (the figure reported for Corcoran P.D. are probably arrests.) The number of detentions exceeding 24 hours has steadily decreased. In 1980, the county jail reported 64 detentions in excess of 24 hours, but reported only 62 detentions on the annual survey. It is not known which figure is correct.

LAKE COUNTY

Juveniles Detained for Any Length of Time

Agency/Facility	1976	1977	1978	1979	1980	1981	Notes
Sheriffs Dept. County Jail	257	4	0	0	0	93	a
City Police Depts. Lakeport	0	0	0	0	0	0	

Juveniles Detained in Excess of 24 Hours

Facility	1976 <sup>b</sup>	1977	1978	1979	1980	1981	Notes
County Jail	122	4	0	0	0	0	a

<sup>a</sup>The county jail reported that in 1978 the Lake County Court ordered that no minors be detained in the jail because it did not meet standards. Minors were subsequently held in an office area until transported to Mendocino County's Juvenile Hall.

<sup>b</sup>Data collection on 24-hour detentions began mid-year, July 1976.

Comments

Lake County has anticipated the opening of its new juvenile hall for several years. Apparently, no minors were detained in law enforcement facilities from 1978 to 1980. Twenty-four-hour-plus detentions occurred at a fairly high rate in 1976, dropped off to only 4 cases in 1977, and there have been none since then.

LASSEN COUNTY

Juveniles Detained in Law Enforcement Facility

Facility	1976	1977	1978	1979	1980	1981
County Jail						
For Any Time	74	88	64	84	67	71
24-Hours Plus	81	74	64	84	70	70

NO REPORTED DETENTIONS IN EXCESS OF 24 HOURS.

Note. Deleted from the annual survey list are: Susanville P.D. and the Sierra Army Depot in Herlong.

Comments

The data from Lassen County are obviously in error. Note that in 1976 and 1980, the number of 24-hour-plus detentions exceeds the number of detentions for any length of time. Attempts have been made to reconcile these two sets of figures, which are collected on two separate forms, but to no avail. The problem is that the county staff have difficulty completing reports on 24-hour-plus detention, resulting in what is probably an overestimate. From this distant viewpoint, the best guess is that the figures for detentions of any length of time are correct; the others are not. The correct number of 24-hour detentions is likely to be less than the temporary detentions. For example, on the 1980 annual survey, the county reported 67 detentions, noting "some booked and released the same day (less than 24 hours)." Yet, the monthly reports on 24-hour detentions showed 67; the two reports do not agree.



LOS ANGELES COUNTY

Juveniles Detained For Any Length of Time

Agency/Facility	1976	1977	1978	1979	1980	1981	Notes
Sheriffs' Dept.- Total	29,204	28,205	26,932	26,719	24,851	22,032	a
Antelope Valley	1,775	1,944	1,678	1,530	1,357	1,280	
Lakewood	2,956	2,604	2,910	2,967	3,044	2,999	
Lennox	2,095	2,319	1,477	1,764	2,170	1,642	
Norwalk	3,208	2,083	2,323	2,610	2,240	1,924	
San Dimas	904	1,013	836	752	694	589	
Central Jail	218	243	142	334	411	479	b
USC. Med. Ctr.	214	196	204	148	126	57	
Sybil Brand	97	119	73	61	50	17	
Altadena	477	591	619	470	508	444	
Lynwood	0	1,336	1,941	1,867	1,698	1,846	c
Carson	1,700	2,018	1,789	1,295	1,595	1,395	
City of Industry	2,998	2,901	2,942	2,722	2,327	2,306	
Crescenta Valley	684	636	414	420	417	360	
East Los Angeles	2,821	1,942	2,487	3,233	1,256	1,291	
Firestone Park	2,349	2,186	1,487	1,388	1,263	1,349	
Lomita	759	763	502	567	549	532	
Malibu	721	1,006	705	596	1,132	550	
Mira Loma	0	0	0	0	-	-	d
Pico Rivera	1,633	922	990	959	778	786	
Santa Clarita	1,282	1,155	1,027	1,001	845	829	
Temple City	1,907	1,747	1,734	1,597	1,834	1,472	
Wayside-Max.	0	0	0	0	0	0	
Wayside-Min.	0	0	0	0	0	0	
West Hollywood	316	404	612	399	543	405	
Avalon	90	77	40	39	11	33	
City Police Depts.							
Burbank	436	267	0	756	625	767	
Claremont	203	161*	129*	88	95	114	e
Compton	2,032*	1,585*	1,129*	701	1,287*	955	e
Covina	1,154*	883*	609	788*	976*	614	e
Culver City	551	1,104*	409*	420*	463*	936*	e
El Segundo	155	117	118*	230*	191*	160*	e
Hawthorne	348	324	1,541*	345	2,095*	197	e
Huntington Park	1,228*	946*	1,051*	604*	680*	938*	e
Long Beach	5,176*	3,744*	4,087	5,502*	5,069*	4,687*	e
Monrovia	387*	281*	215*	224*	142	286*	e
Montebello	704*	512*	436*	476*	618*	409	e
Pomona	865*	932*	896*	1,128*	882*	782*	e
Redondo Beach	641	428	721	1,035*	930*	830*	e

Preceding page blank

LOS ANGELES COUNTY (cont'd.)

Agency/Facility	1976	1977	1978	1979	1980	1981	Notes
San Gabriel	187	393*	322*	224	525*	182	e
Santa Monica	481	422	999*	916*	40	305	e
Torrance	2,262*	1,468	1,490	1,451	1,555*	1,284	e
Alhambra	853*	791*	809*	391	N/A	587	e
Arcadia	76	57	40	43	31	66	
Azusa	683*	358	369*	436*	367*	380*	e
Bell (Cudahy)	1,116*	1,084*	479	953*	1,030*	172	e
Beverly Hills	287*	311*	226*	273*	312*	0	e
El Monte	2,035*	343*	1,279*	1,298*	923*	1,189*	e
Gardena	846*	471	736	592	608	706	e
Glendale	1,188*	1,202*	534	1,369*	918*	1,059*	e
Glendora	788*	525*	355*	497*	374*	411*	e
Hermosa Beach	64*	162*	49	66	150*	100*	
Inglewood	1,310	1,266	1,265	1,024	931	1,081	
Lynwood	1,404*	DEL.	-	-	-	-	e, f
Manhattan Beach	425*	341*	312*	328*	301*	250*	e
Maywood	254*	172*	129*	158*	219*	101	e
Monterey Park	421	0	612*	0	337	471	e
Palos Verdes Est.	163*	220*	148*	120*	149*	95	e
Pasadena	1,012	951	667	848	908	945	
San Fernando	469*	257*	321*	404*	303*	231	e
Signal Hill	112*	121*	866*	115	75	70	e
South Gate	1,208*	1,216*	992	1,608*	1,608*	1,894*	e
South Pasadena	139	84*	0	0	82*	118*	e
Vernon	0	0	0	0	40	0	g
West Covina	1,732*	1,411*	932	1,150*	1,192*	1,318*	e
Whittier	2,030*	1,084*	1,110*	987*	884*	1,098*	e
Bell Gardens	489*	394*	0	239*	282*	305*	e
Downey	786*	636*	0	963*	503	667	e
Irwindale	60	91*	70*	44*	62*	82*	e
LaVerne	297*	243*	263*	245*	235*	199	e
San Marino	105*	76*	N/A	68	40	67	e
Sierra Madre	80*	49*	107*	94*	122*	95*	e
Baldwin Park	NOL	NOL	NOL	0	632*	708*	e
Los Angeles							
Total Precincts	33,606	27,545	0	0	19,970	20,548	h
Parker Center	1,464	1,172	0	0	0	0	
Devonshire	1,564	1,385	0	0	657	1,537	
Foothill	2,234	2,292	0	0	1,965	1,600	
Harbor	1,915	1,240	0	0	627	1,174	
Hollywood	1,971	1,599	0	0	192	N/A	
North Hollywood	1,330	1,252	0	0	1,284	1,325	
77th St. Sta.	3,474	2,474	0	0	1,050	1,463	
Southeast	0	0	0	0	2,500	1,243	
Southwest	3,073	2,378	0	0	2,520	1,567	
Van Nuys	1,742	1,669	0	0	0	0	

LOS ANGELES COUNTY (cont'd.)

Agency/Facility	1976	1977	1978	1979	1980	1981	Notes
Venice	1,679	1,222	0	0	1,454	1,141	i
West Los Angeles	1,265	1,036	0	0	347	1,147	
West Valley	2,149	1,917	0	0	1,500	1,840	
Wilshire	2,264	1,575	0	0	1,420	1,218	
Hollenbeck	2,234	1,692	0	0	1,500	2,000	
Newton Street	1,830	1,391	0	0	0	1,070	
Northeast Div.	1,598	1,604	0	0	1,275	700	
Rampart	1,820	1,647	0	0	1,679	1,523	
County Totals							
Detaining Facilities	84	82	62	64	83	83	
Total Detentions	100,052	83,233	53,754	55,920	74,612	70,491	

Note. The following have been deleted from the annual survey list: LASO-Mira Loma, Lynwood P.D., and LAPD-Watts.

N/A - Minors were reported detained but number was not available.

DEL - Deleted from survey list.

NOL - Not on survey list.

<sup>a</sup>See text re Sheriff's Department under Comments.

<sup>b</sup>In 1976 and 1977 there was some confusion in the use of the data collection forms for the Central Jail and the Hall of Justice. The number of detentions reported by the two locations have been combined for 1976. The Hall of Justice was closed in 1979 and deleted from our survey list.

<sup>c</sup>In 1976, the facility was called the Biscailuz Center. In 1977, Lynwood reported detentions for the May to December period only.

<sup>d</sup>The Mira Loma Rehabilitation Center was reported closed in 1979 and was deleted from the survey list.

<sup>e</sup>Figures with asterisks appear to include total arrests rather than being limited to secure detentions only.

<sup>f</sup>In 1977, the functions of the Lynwood P.D. were assumed by the Sheriff's Office. Lynwood P.D. was deleted from the annual survey list.

<sup>g</sup>The 40 detentions reported in 1980 were verified by a P&CC consultant. It is not known why Vernon P.D. did not report any detentions for all other years.

<sup>h</sup>See text re LAPD under comments.

<sup>i</sup>The Venice precinct will become the Pacific precinct in 1982.

Juveniles Detained in Excess of 24 Hours

Agency/Facility	1976 <sup>j</sup>	1977	1978	1979	1980	1981	Notes
Sheriffs' Dept.- Total	287	475	310	564	518	553	
Antelope Valley	11	0	0	0	0	0	
Lakewood	18	0	0	0	0	0	
Lennox	N/A <sup>k</sup>	0	0	34 <sup>k</sup>	0	0	k
Norwalk	1	0	0	0	0	0	
San Dimas	N/A <sup>k</sup>	0	0	2 <sup>k</sup>	0	0	k
Central	N/A <sup>k</sup>	243	142	334	342	479	l, k
Hall of Justice	162	0	0	DEL	-	-	m, l
USC Med. Sta.	80	173	125	124	126	57	
Sybil Brand	15	59	43	61	50	17	
Altadena	0	0	0	1 <sup>k</sup>	0	0	k
Pico Rivera	0	0	0	8 <sup>k</sup>	0	0	k
Police Depts. - Total	149	249	178	158	88	70	
Claremont	8	N/A <sup>k</sup>	0	0	0	0	k
Culver City	N/A <sup>k</sup>	0	N/A <sup>k</sup>	0	2	0	k
El Segundo	0	1 <sup>k</sup>	0	0	0	0	k
Huntington Park	3 <sup>k</sup>	0	0	0	0	0	k
Long Beach	98	197	162	113	57	49	
Monrovia	N/A <sup>k</sup>	N/A <sup>k</sup>	0	0	N/A <sup>k</sup>	0	k
Montebello	N/A <sup>k</sup>	N/A <sup>k</sup>	0	0	0	0	k
Pomona	N/A <sup>k</sup>	0	0	0	0	0	k
Redondo Beach	0	N/A <sup>k</sup>	0	1	2	0	k
San Gabriel	4	0	0	0	0	0	
Santa Monica	19	32	0	2 <sup>k</sup>	1	N/A <sup>k</sup>	k
Torrance	17	19	16	3	0	N/A <sup>k</sup>	n, k
El Monte	0	N/A <sup>k</sup>	N/A <sup>k</sup>	0	1	0	k
Glendale	N/A <sup>k</sup>	0	0	0	0	0	k
Hermosa Beach	0	0	N/A <sup>k</sup>	2	0	0	k
Inglewood	0	0	0	37	25	21	
Whittier	N/A <sup>k</sup>	N/A <sup>k</sup>	0	0	0	0	
County Totals							
Detaining Facilities	21	13	8	13	10	7	
Total Detentions	436	724	488	722	606	623	

Note. The following have been deleted from the annual survey list: LASO-Mira Loma, Lynwood P.D., and LAPD-Watts.

N/A - Minors were reported detained but number was not available.

DEL - Deleted from survey list.

<sup>j</sup>Data on 24-hour-plus detentions in 1976 were reported during July-December only.

<sup>k</sup>These figures represent data reported on the annual survey but not reported on the monthly reporting system.

<sup>l</sup>The data for Central Jail and Hall of Justice might be reversed in 1976 due to confusion in codes for the two facilities.

<sup>m</sup>The Hall of Justice was reported closed in 1979.

<sup>n</sup>In 1980, Torrance P.D. reported one 24-hour-plus detention. It was later found that the youth had been released in less than 24 hours.

Comments

Sheriffs' Department. The detention data for LASO represents all bookings.

At present there is no system for determining the exact number of minors that were actually placed in secure detention. However, according to staff at the LASO, the majority of minors brought into sheriff facilities for booking are placed in detention for short periods of time.

The data on 24-hour-plus detentions are based on reports from a computerized data system operated by LASO. There have been some "bugs" in the computer program which may have resulted in an overcount of minors detained in excess of 24 hours. The figures have been verified in most cases. However, for the year 1979 it may be that the detentions reported for Lennox, San Dimas, Altadena, and Pico Rivera may not have occurred.

Los Angeles Police Department. The definition of secure detention has been a problem in the reporting of consistent data by LAPD. Since all youths brought into field stations for booking are temporarily detained for some short period of time (according to the definition) the number of temporary detentions reported each year should nearly equal the number of arrests. The LAPD has confirmed that the figures reported represent the number of arrested minors on whom petitions were requested. There should be detentions reported for 1978

and 1979, but this was not done due to the lack of clarity in the definition of secure detention.

General. If we added the missing data for LAPD in 1978 and 1979 (about 20,000 per year) the data would indicate a trend for a decrease in the number of minors reported to have been temporarily detained each year.

However, a significant number of police agencies appear to have reported arrests rather than secure detentions and, therefore, the decreasing trend shown for temporary detentions may simply correspond to a general decrease in the number of minors arrested (e.g., 103,758 arrests in 1976, compared to 79,489 in 1980).

MADERA COUNTY

Juveniles Detained For Any Length of Time

Agency/Facility	1976	1977	1978	1979	1980	1981	Notes
Sheriffs Dept. County Jail	0	8	0	0	0	0	a
City Police Dept. Chowchilla	61*	88*	0	16	0	5	b
County Totals Detaining Facilities	1	2	0	1	0	1	
Total Detentions	61	96	0	16	0	5	

NO DETENTIONS IN EXCESS OF 24 HOURS.

Note. Deleted from the annual survey list is Madera P.D.

<sup>a</sup>In 1978, the county jail reported it held only minors who were certified by the courts. It was also reported that one or more minors were held for longer than 24 hours. However, these data were not reported to CYA via the monthly reporting system.

<sup>b</sup>Figures with asterisks appear to include all arrests rather than be limited to secure detentions only.

Comments:

Few detentions have occurred in the county jail. The detentions at the Chowchilla Detention Facility are only temporary, prior to transportation to the Madera Juvenile Hall. The data have been somewhat inconsistently reported, but it appears that the number of detentions has decreased.



MARIN COUNTY

Juvenile Detentions For Any Length of Time

Agency/Facility	1976	1977	1978	1979	1980	1981	Notes
Sheriffs Dept.							
County Jail	0	0	0	0	1	0	a
Honor Camp	DNR	DNR	0	0	0	0	
City Police Depts.							
Fairfax	0	0	DNR	0	25	N/A	
Mill Valley	72	0	24	N/A	0	0	
San Rafael	0	0	200	400	75	N/A	
Belvedere	0	0	0	0	0	0	
Corte Madera	0	0	0	0	0	N/A	
Larkspur	0	0	0	0	0	N/A	
Novato	0	496	0	599*	514*	N/A	b
San Anselmo	0	0	0	403*	0	20	b
Sausalito	71*	21*	0	4	24	20	b
County Totals							
Detaining Facilities	2	2	2	5	5	7	
Total Detentions	143	517	224	1,406	639	40	

NO DETENTIONS IN EXCESS OF 24 HOURS. <sup>a</sup>

DNR = Did Not Report

N/A = Reported that minors were detained but number unavailable.

Note. - Deleted from the annual survey list are Tiburon P.D. and Ross P.D.

<sup>a</sup>In 1980, one minor was held in the county jail in excess of 24 hours. The minor was a juvenile hall escapee.

<sup>b</sup>Figures with asterisks appear to include all arrests and may not be limited to secure detentions only.

Preceding page blank

MARIN COUNTY

Comments

There has been considerable inconsistency in the reporting from Marin County. No trend can be defined. The number of reported detentions was lowest in 1981, but there were five agencies that said they held minors but were unable to provide numbers.

MARIPOSA COUNTY

Juveniles Detained in Law Enforcement Facility

Facility	1976	1977	1978	1979	1980	1981
County Jail						
For Any Time	79	78	120	137	107	85
24 Hours-Plus	28 <sup>a</sup>	28	79	54	25	25

<sup>a</sup>Data collection on 24-hour detentions began mid-year, July 1976.

Comments

Both temporary and 24-hour-plus detentions showed annual increases after 1976, but began decreasing again during the last two years.

MENDOCINO COUNTY

Juveniles Detained For Any Length of Time

Agency/Facility	1976	1977	1978	1979	1980	1981	Notes
Sheriffs Dept.							
County Jail	N/A	0	8	15	0	1	
Rehab. Center	1	0	8	1	0	1	a
City Police Depts.							
Fort Bragg	65*	44*	68*	86*	70*	42	b
Ukiah	0	0	0	0	0	0	
Willits	82*	79*	80	133*	102*	68	b
County Totals							
Detaining Facilities	4	2	4	4	2	4	
Total Detentions	148	123	164	235	172	112	

N/A - Reported that minors were detained but number unavailable.

<sup>a</sup>It is possible that the county got the surveys confused and reported 8 detentions in the Rehabilitation Center that were actually in county jail.

<sup>b</sup>Figures with asterisks appear to include all arrests and may not be limited to secure detentions only.

Juveniles Detained in Excess of 24 Hours

Facility	1976	1977	1978	1979	1980	1981	Notes
County Jail	1	0	2	15	0	1	c
Rehab. Center	0	0	0	1	0	1	c

<sup>c</sup>In 1981, the one 24-hour detention in the county jail and the rehabilitation center was the same individual.

Preceding page blank

MENDOCINO COUNTY

Comments

The number of temporary detentions has probably remained fairly constant over the years, if you take into account that some non-detained arrests may have been included in some reports for some years. The practice of detaining for more than 24-hours in law enforcement facilities has been limited.

MERCED COUNTY

Juveniles Detained For Any Length of Time

Agency/Facility	1976	1977	1978	1979	1980	1981	Notes
Sheriffs Dept.							
County Jail	20	18	36	19	32	0	
Rehab. Center	0	0	0	0	0	0	
City Police Depts.							
Los Banos	128	195	279*	224*	152	65	a
Atwater	33	33	N/A	519*	0	0	a
Dos Palos	0	0	78*	61	70*	20	a
Gustine	0	0	0	4	0	0	
Merced	0	0	0	25	0	18	
Livingston	0	0	0	12	0	0	
County Totals							
Detaining Facilities	3	3	4	7	3	3	
Total Detentions	181	246	393	864	254	103	

N/A = Reported that minors were detained but number unavailable.

<sup>a</sup>Figures with asterisks appear to include all arrests and are not limited to secure detentions only.

Juveniles Detained in Excess of 24 Hours

Facility	1976 <sup>b</sup>	1977	1978	1979	1980	1981
County Jail	2	11	38	15	32	0

<sup>b</sup>In 1976, data were collected for July-December only.



MERCED COUNTY

Comments

The reported detention figures show an increase from 1976 to 1979, and then a decrease to a low figure for 1981. Actually, the decreased increase has not been as marked as the figures show since in 1978 and 1979, the numbers include non-detained arrests. Nevertheless, there is a trend for a slight decrease in detentions. Note also that the County Jail reported no detentions of more than 24 hours in 1981.

MODOC COUNTY

Juvenile Detentions in Law Enforcement Facility

Facility	1976	1977	1978	1979	1980	1981
County Jail						
For Any Time	39	18	42	42	32	40
24-Hours-Plus	11 <sup>a</sup>	13	14	19	12	21

Note. - Deleted from the annual survey list is Alturas P.D.

<sup>a</sup>Data on 24-hour-plus detentions began mid-year 1976.

Comments

Except for 1977, each year shows a similar number of temporary detention in the Modoc County Jail. For 24-hour-plus detentions, the greatest number was reported in 1981 (unless the count for the full year 1976 was greater).

MONO COUNTY

Juvenile Detention in Law Enforcement Facilities

Facility	1976 <sup>a</sup>	1977	1978	1979	1980	1981	Notes
Sheriffs Dept.							
Bridgeport Jail							
For Any Time	46	31	81	96	72	60	
24-Hour-Plus	21	19	29	22	N/A	N/A	b
Mammoth Station							
Any Time	25	34	97	0	13	19	c
24-Hour Plus	1	N/A	N/A	0	0	0	d

<sup>a</sup>In 1976, the 24-hour-plus detention data covers July-December only.

<sup>b</sup>24-Hour-Plus detention in Bridgeport Jail: 1) in 1978, the figure of 29 includes an unknown number of such detentions at Mammoth Station; 2) in both 1980 and 1981, 24-hour plus detentions occurred but number is unavailable.

<sup>c</sup>In 1979, Mono County reported that Mammoth was no longer being used to house minors. However, minors were being detained, but by policy no longer than six hours, as reported in 1980 and 1981.

<sup>d</sup>In 1977 and 1978, Mammoth reported holding minors for more than 24 hours, but numbers are unavailable.

Comment

The Mono County Sheriffs Dept. has not uniformly submitted reports on the detention of minors over 24 hours.

Preceding page blank

MONTEREY COUNTY

Juveniles Detained For Any Length of Time

Agency/Facility	1976	1977	1978	1979	1980	1981
Sheriffs Dept.						
County Jail	49	12	0	0	0	0
Rehab. Center	0	0	0	0	0	0
City Police Depts.						
Monterey	183	240	206	239	211	189
Seaside	140	225*	N/A	239*	20	264*
Carmel	90*	79*	0	41*	0	0
Gonzales	0	0	DNR	23	74*	0
Greenfield	15	1	0	0	0	0
Pacific Grove	217*	143*	11	173*	76	33
Del Rey Oaks	66*	49*	0	30*	0	6
King City	0	0	0	0	83*	0
Salinas	0	0	0	489	0	300
San City	0	0	0	0	0	0
Soledad	0	0	0	0	0	0
Marina	N/S	N/S	N/S	N/S	200*	50
County Totals						
Detaining Facilities	7	7	3	7	5	6
Total Detentions	760	749	217	1,234	464	842

NO DETENTIONS IN EXCESS OF 24 HOURS.

N/A = Reported that minors were detained but number unavailable.

DNR = Did Not Report.

NS = Not Surveyed. (added to survey list in 1980).

\* Figure appears to include all arrests and not just secure detentions.

Preceding page blank

# MONTEREY COUNTY

## Comments

The data reported by law enforcement agencies in Monterey County has been quite inconsistent. A number of agencies appear to have reported total arrests rather than secure detentions. The large counts reported by Salinas P.D. have increased the totals for 1979 and 1981. As a result, these data tell us little about the frequency of detention in the county on a year-to-year basis.

# NAPA COUNTY

## Juveniles Detained for Any Length of Time

Agency/Facility	1976	1977	1978	1979	1980	1981	Notes
Sheriffs Dept.							
County Jail	28	0	0	0	0	0	a
City Police Depts.							
St. Helena	37*	35*	3	0	14	53	b
Calistoga	0	0	0	0	0	0	
Napa	0	0	0	0	72	N/A	
County Totals							
Detaining Facilities	2	1	1	0	2	2	
Total Detentions	65	35	3	0	86	53	

NO DETENTIONS IN EXCESS OF 24 HOURS.

N/A - Reported that minors were detained but number unavailable.

<sup>a</sup>As of 5-21-76 county policy decreed that no minors would be detained in jail.

<sup>b</sup>Figures with asterisks appear to include total arrests rather than detentions.

## Comments

Few minors have been detained in law enforcement facilities in Napa County. The County Dept. of Corrections on 5-21-76 decreed that no minors would be detained in the County jail. It is unknown why detentions by St. Helena P.D. decreased, then increased, and it is assumed the Napa P.D. has detained a small number of minors each year but did not report them in 1976-1979 due to a misinterpretation of the term "secure detention."

NEVADA COUNTY

Juveniles Detained For Any Length of Time

Agency/Facility	1976	1977	1978	1979	1980	1981
Sheriff's Dept.						
County Jail	78	43	62	128	35	0
Truckee Sta.	32	16	17	15	39	91
City Police Dept.						
Grass Valley	0	0	DNR	0	0	0
County Totals						
Detaining Agencies	110	59	79	143	74	91

DNR - Did Not Report.

Note. Deleted from the annual survey list is Nevada City P.D.

Juveniles Detained in Excess of 24 Hours

Facility	1976 <sup>a</sup>	1977	1978	1979	1980	1981
County Jail	33	43	62	93	35	0

<sup>a</sup>In 1976, data were collected on 24-hour detentions for July-December only.

Comments

Juvenile detentions, both short term and 24-hour-plus, are handled by the Nevada County Sheriff's Department. The Truckee Substation handled only short term detentions and transferred all minors to the juvenile hall or a non-secure detention facility. The Sheriff's Department reports that no minors were detained in the county jail in 1981.

Preceding page blank

ORANGE COUNTY

Juveniles Detained For Any Length of Time

Agency/Facility	1976	1977	1978	1979	1980	1981	Notes
Sheriff's Dept.							
County Jail	43	54	71	50	71	55	
Industrial Farm	0	0	0	0	0	0	
Theo.Lacy	0	0	0	0	0	0	
UC Irvine Med.	NOL	NOL	NOL	NOL	NOL	DNR	
City Police Depts.							
Anaheim	623	615	695	685	635	498	
Costa Mesa	0	0	0	1,047	0	0	b
Fullerton	239	196	177	280	180	209	
Huntington Beach	3,144	1,833	2,103	2,366	2,071	1,490	
Laguna Beach	224*	124	12	308*	250*	90	a
La Habra	455	479*	417*	275*	282	434*	a
Newport Beach	2,718*	3,202*	1,890*	2,829*	2,838*	2,261*	a
Placentia	N/A	354	358	444	380	216	
San Clemente	123	145	94	DNR	147	100	
Brea	N/A	437*	N/A	N/A	0	514	a, c
Buena Park	907	1,343*	1,213*	989	1,173*	1,056*	a
Cypress	0	0	0	0	0	0	
Fountain Valley	0	722*	N/A	608*	N/A	542*	a
La Palma	183*	76*	60*	107*	147*	107*	a
Garden Grove	1,212	0	N/A	1,327*	N/A	0	a, d
Orange	0	0	20	20	20	1,175	e
Santa Ana	0	0	N/A	N/A	0	511	
Seal Beach	769*	527*	305*	144	220*	240*	a
Stanton	501*	379*	324*	257*	226*	163	a
Tustin	N/A	0	0	N/A	20	76	
Westminster	0	0	0	N/A	780*	308	a
Los Alamitos	NS	104*	0	69*	N/A	0	a, f
Irvine	NS	NS	NS	NS	0	534	
County Totals							
Detaining Facilities	17	17	19	22	21	21	
Total Detentions	11,141	10,590	7,739	11,805	9,440	10,579	

NS = Not Surveyed.

DNR = Did Not Report.

N/A = Reported that minors were detained but number not available.

<sup>a</sup> Figures with asterisks appear to include all arrests and to not be limited to secure detentions only.

<sup>b</sup> Costa Mesa reported 0 for 1976 to 1978. When they reported 1,047 in 1979, the facility was contacted. They verified that 1,047 minors had been securely detained in a locked room. However, in 1980 and 1981, the agency again reported 0.

Preceding page blank



<sup>c</sup>From 1976 to 1980, it is unclear if Brea P.D. detained minors. In 1981 they reported that they had moved to a new facility with adequate detention quarters and prior to 1981, minors were held in the "records area."

<sup>d</sup>In 1981, it was verified by a P&CC consultant that there were no secure detentions at the Garden Grove P.D.

<sup>e</sup>In 1981, the Orange P.D. reported that they were using a revised definition of secure detention which they felt covered the minors processed through their facility.

<sup>f</sup>In 1981, Los Alamitos P.D. reported that minors were never held anywhere except in "general office space."

Juveniles Detained in Excess of 24 Hours

Facility	1976 <sup>g</sup>	1977	1978	1979	1980	1981	Notes
County Jail	47	106	147	30	54	48	h

<sup>g</sup>In 1976, 24-hour detention data were collected for July-December only.

<sup>h</sup>It is considered likely that the Orange County jail was incorrectly completing monthly reports of 24-hour-plus detentions during 1976, 1977, and 1978. The error resulted in an overcount of minors detained in excess of 24 hours.

Comment

Due to the serious inconsistencies in the data submitted by the Orange County law enforcement agencies, it is not possible to make definitive statements regarding detention practices in the county. Of 23 city police departments, only three have submitted what appear to be accurate reports of detention each year. For most of the other agencies, the reports alternate from 0 to N/A to several hundreds.

PLACER COUNTY

Juveniles Detained for Any Length of Time

Agency/Facility	1976	1977	1978	1979	1980	1981	Notes
Sheriff's Dept.							
County Jail	73	1	0	0	0	0	
Tahoe City Sta.	N/A	68	25	6	0	0	
City Police Depts.							
Roseville	26	194	195	229	204	176	
Rocklin	0	0	0	0	68*	31	a
County Totals							
Detaining Agencies	3	3	2	2	2	2	
Total Detentions	99	263	220	235	272	207	

Note. Deleted from the survey list are P.D.s in Auburn, Colfax, and Lincoln.

N/A - Reported that minors were detained but number unavailable.

aFigures with asterisks appear to include total arrests and not be limited to secure detentions only.

Juveniles Detained in Excess of 24 Hours

Agency/Facility	1976	1977	1978	1979	1980	1981	Notes
County Jail	0	1	0	0	0	0	b

<sup>b</sup>The Sheriff's Tahoe City Station reported detaining minors in excess of 24 hours in 1976, 1977, and 1978 but did not report the data via the monthly report forms.

Comments

The number of short-term juvenile detentions has changed but little over the time period. However, 24-hour-plus detentions did not occur in 1979-1981.

PLUMAS COUNTY  
Juveniles Detained in Law Enforcement Facility

Agency/Facility	1976	1977	1978	1979	1980	1981
County Jail						
For Any Time	101	71	76	79	54	N/A
Over 24 Hours	N/A	N/A	N/A	N/A	N/A	0

Comments

From 1976 to 1980, the Sheriff's department reported that minors were held in secure detention for over 24 hours. However, the county jail has never submitted the monthly reports of 24-hours-plus detentions. On the 1979 annual survey, it was reported that 37 minors had been detained over 24 hours (for a total of 99 days). Two requests were sent to the county jail, asking that monthly reports be submitted when minors were held over 24 hours. No reply was received. In 1981, the county jail reported that all detentions were "sent to Butte County."

Preceding page blank

RIVERSIDE COUNTY  
Juveniles Detained For Any Length of Time

Agency/Facility	1976	1977	1978	1979	1980	1981	Notes
Sheriff's Dept.							
Main Jail	11	10	0	0	0	0	a
Indio Jail	984	822	990	1,298	1,219	135	
Blythe Jail	319	256	289	269	116	226	
Hemet Sta.	111	132	85	92	0	0	
Banning Rehab.	0	0	286	0	0	0	b
Academy Sta.	0	0	0	0	0	0	
Elsinore Sta.	0	85	0	490	70	664	
Banning Sta.	c	c	c	355	435	273	c
City Police Depts.							
Banning	322	239	123	c	c	c	c
Beaumont	140*	120*	85*	0	0	0	d
Coachella	0	0	0	0	0	0	
Corona	0	0	0	0	0	0	
Hemet	114	138	114	206	121	155	
Palm Springs	299	640*	276	536*	583*	112	d
Perris	212*	152*	151*	209*	200*	224*	d
Riverside	0	0	0	16	85	66	
San Jacinto	145*	93*	70	99	71*	6	d
County Totals							
Detaining Facilities	10	11	10	10	9	9	
Total Detentions	2,657	2,687	2,469	3,570	2,900	1,861	

<sup>a</sup>The Main Jail was disapproved for the detention of minors in 1978.

<sup>b</sup>In 1978, Banning Rehabilitation Center reported detaining 286 wards in transit from Indio jail to the Riverside JH. These 286 were also counted as detentions by the Indio jail.

<sup>c</sup>Operation of the Banning City Jail was assumed by the Sheriff's Dept. in 1979.

<sup>d</sup>Figures with asterisks appear to include all bookings, not just detentions.

Preceding page blank

RIVERSIDE COUNTY

Juveniles Detained in Excess of 24 Hours

Agency/Facility	1976 <sup>e</sup>	1977	1978	1979	1980	1981	Notes
Sheriff's Dept.							
Main Jail	9	6	0	0	0	0	
Blythe	62	37	59	83	116	93	
Indio	13	88	126	144	157	135	
Police Dept.							
Banning	79	19	24	0	0	0	
Palm Springs	3	0	0	0	0	0	
County Total	166	150	209	227	273	228	

<sup>e</sup>Data on 24-hour-plus detentions collected for July - December only.

Comments

The number of juveniles held in secure detention decreased 30% from 1976 to 1981. The total number of detentions is considered to be an overestimate, since it is assumed that at least two agencies periodically reported total bookings rather than secure detentions only. In 1981, there were two facilities in which 228 minors were held in excess of 24 hours. This is down from five facilities in 1976. However, detentions in excess of 24 hours in 1980 exceeded the count in 1977, 228 vs. 150 (up 52%).

SAN BERNARDINO COUNTY

Juveniles Detained For Any Length of Time

Agency/Facility	1976	1977	1978	1979	1980	1981	Notes
Sheriff's Dept.							
Glen Helen	37	38	33	35	2	4	
Needles Sta.	20	32	22	41	26	20	
County Jail	0	0	0	527	0	0	
Barstow Sta.	0	164	104	166	337	154	
Big Bear Lake	135	320	223	1,034	257	238	
29 Palms Sta.	156	6	67	33	27	70	
Victorville Sta.	28	45	199	47	175	90	
West End Sta.	64	51	76	60	0	0	b
Yucaipa Sta.	NS	NS	NS	NS	NS	83	
City Police Depts.							
Chino	N/A	612*	384*	286*	297*	382*	a
Colton	450*	304*	0	0	0	0	a
Fontana	562*	544*	N/A	N/A	N/A	N/A	a
Montclair	N/A	425	338	459	331	330	
Ontario	857	N/A	787	1,540*	1,094	1,294	a
Redlands	528*	423*	10	62	476*	342*	a
Barstow	0	0	0	0	0	0	
Rialto	875*	769*	492*	534	643*	681*	a
San Bernardino	0	0	0	0	0	0	
Upland	N/A	0	0	744	597	535	c
County Totals							
Detaining Agencies	14	14	13	15	13	14	
Total Detentions	3,712	3,733	2,735	5,568	4,262	4,223	

NS - Not Surveyed.

N/A - Reported minors were detained but number unavailable.

<sup>a</sup>Figures with asterisks appear to include all arrests and to not be limited to secure detentions only.

<sup>b</sup>In 1980, the West End Sheriff's Substation initiated a policy decreeing that no juveniles would be detained.

<sup>c</sup>The Upland P.D. added a holding cell to their facility in 1978.

SAN BERNARDINO COUNTY

Juveniles Detained In Excess of 24 Hours

Agency/Facility	1976 <sup>e</sup>	1977	1978	1979	1980	1981	Notes
Sheriff's Dept.							
Glen Helen Rehab.Ctr.	30	38	33	20	1	2	
Needles Sta.	3	0	0	0	0	0	
Barstow Sta.	0	0	4	15	39	34	d
Victorville Sta.	0	0	2	0	0	N/A	

<sup>d</sup>The four 24-hour-plus detentions in Barstow Station in 1978 are estimated.

<sup>e</sup>In 1976, 24-hour-plus detention data were collected for July-December only.

Comments

The detention data from San Bernardino County have been quite inconsistent. The reports from the Sheriff's Department may be somewhat more reliable, although the county jail only reported detentions in one of the six years. The number of 24-hour-plus detentions reported in 1976 through 1979 may be too high because of confusion in interpreting how to use the monthly report forms. The total detentions for the county are also presumed to be too high because a number of agencies probably reported arrests rather than secure detentions.

SACRAMENTO COUNTY

Juveniles Detained For Any Length of Time

Agency/Facility	1976	1977	1978	1979	1980	1981	Notes
Sheriff's Dept.							
County Jail	DNR	5	3	0	0	0	
Rio Cosumnes	0	0	0	0	0	0	
Womens Det.	0	0	0	0	0	0	
City Police Depts.							
Folsom	66*	32*	39	36	57*	39	a
Isleton	0	0	0	0	0	0	
Galt	0	0	0	0	5	20	b
Sacramento	0	0	0	2,073	N/A	N/A	c
County Totals							
Detaining Facilities	1	2	2	2	3	3	
Total Detentions	66	37	42	2,109	57	59	

NO DETENTIONS IN EXCESS OF 24 HOURS.

N/A - Reported minors were detained but number unavailable.

DNR - Did not report.

<sup>a</sup>Figures with asterisks appear to include total arrests and to not be limited to only secure detentions.

<sup>b</sup>Galt P.D. opened a new facility in 1980.

<sup>c</sup>Sacramento P.D. reported 2,073 detentions in 1979. This number was verified.

Comments

The county jail no longer detains minors. In 1977 and 1978 they reported they held a few court-ordered remands but the number was unavailable. It is presumed that Sacramento P.D. also had temporary detentions from 1976 to 1978, but due to unclear definitions or interpretation of "secure detention," none were reported.



SAN DIEGO COUNTY  
Juveniles Detained For Any Length of Time

Agency/Facility	1976	1977	1978	1979	1980	1981	Notes
Sheriff's Dept.							
County Jail	79	156	857	115	2	0	
City Police Depts.							
Escondido	1,134*	829*	806	772	480	322	a
Oceanside	226	206	209	279	342	371	
Carlsbad	0	0	N/A	N/A	0	0	
Chula Vista	N/A	1,340*	175	260	1,152*	561	a
Coronado	0	1	0	6	165*	181*	a
El Cajon	1,200	1,100	2,175*	2,083*	2,090*	2,345*	a,b
La Mesa	0	0	N/A	N/A	523*	0	c
Imperial Beach	0	0	0	211*	325*	446*	a
National City	915*	851*	N/A	1,270*	1,256*	160	
San Diego	0	0	0	829	0	0	
County Totals							
Detaining Facilities	6	7	8	11	9	7	
Total Detentions	3,554	4,483	4,273	5,825	6,335	4,386	

N/A - Minors were reported detained but number unavailable.

<sup>a</sup>Figures with asterisks appear to include all arrests and to not be limited to secure detentions only.

<sup>b</sup>The figures for El Cajon P.D. in 1980 and 1981 were verified by a P&CC consultant. However, in 1980, El Cajon reported 2,069 total juvenile arrests to BCS, which is slightly less than the 2,090 reported detentions.

<sup>c</sup>In 1980, La Mesa reported 523 detentions but noted that some were non-detention arrests. It is assumed they reported 0 in 1981 rather than making a similar statement.

SAN DIEGO COUNTY

Juveniles Detained in Excess of 24 Hours

Agency/Facility	1976 <sup>d</sup>	1977	1978	1979	1980	1981	Notes
County Jail	79	124	146	60	2	0	

<sup>d</sup>In 1976, 24-hour detention data were collected for July-December only.

Comments

The total detentions for the county are probably overestimates due to several agencies reporting arrests rather than detentions. The agencies reporting N/A in some years also make it difficult to make any statements about trends. It can be stated, however, that 24-hour-plus detentions in the county jail have been reduced to zero in 1981.

SAN FRANCISCO COUNTY

Juveniles Detained For Any Length of Time

Agency/Facility	1976	1977	1978	1979	1980	1981	Notes
Sheriff's Dept.							
Jail No. 1	48	36	48	42	0	0	
Jail No. 2	0	0	0	0	0	0	
San Bruno	0	0	0	0	0	0	
Security Ward	5	6	0	13	DNR	10	
County Totals							
Detaining Facilities	2	2	1	2	0	1	
Total Detentions	53	42	48	55	0	10	

DNR - Did Not Report.

Juveniles Detained in Excess of 24 Hours

Facility	1976	1977	1978	1979	1980	1981	Notes
County Jail No. 1	8	36	48	42	0	0	

Comments

Most of the facilities of the San Francisco County Sheriff's Department have been decertified for the detention of minors. Minors have been lodged for more than 24 hours in the Sheriff's hospital security ward, but these have not been reported via the monthly reports.

SAN BENITO COUNTY  
Juveniles Detained For Any Length of Time

Agency/Facility	1976	1977	1978	1979	1980	1981	Notes
Sheriff's Dept.							
County Jail	101	97	184	177	161	138	
City Police Depts.							
Hollister	0	0	0	0	0	0	
San Juan Bautista	NS	NS	0	0	0	0	

NO REPORTED DETENTIONS IN EXCESS OF 24 HOURS.

NS - Not Surveyed.

Comments

The County Jail is the only facility that detains minors in San Benito County. The Hollister P.D. reports that they book all detentions in the county jail. There have been no detentions in excess of 24 hours.

Preceding page blank

SAN JOAQUIN COUNTY  
Juveniles Detained For Any Length of Time

Agency/Facility	1976	1977	1978	1979	1980	1981	Notes
Sheriff's Dept.							
Honor Farm	10	14	9	11	10	9	
Women's Facility	0	2	0	0	0	0	
	0	1	0	0	0	1	
City Police Depts.							
Lodi	379*	368*	399	362*	473	330	a, b
Tracy	0	0	0	0	0	0	
Manteca	351	435*	342	424*	439*	331	a
Stockton	0	0	0	0	24	N/A	
Escalon	0	0	0	0	0	0	
County Totals							
Detaining Facilities	3	5	3	3	4	5	
Total Detentions	740	820	750	797	946	671	

N/A - Minors were reported detained but number not available..

Note. Deleted from the annual survey list is Ripon P.D.

aFigures with asterisks appear to include total arrests and not to be limited to secure detentions only.

bIn 1978, the 399 reported detentions were verified by P&CC consultant. In 1976, 1977, and 1979 the nuber of reported detentions exceeded the total number of juvenile arrests reported to BCS.

Preceding page blank

SAN JOAQUIN COUNTY

Juveniles Detained in Excess of 24 Hours

Facility	1976	1977	1978	1979	1980	1981	Notes
County Jail	4	40	18	11	21	9	c
Women's Facility	0	1	0	0	0	0	

<sup>c</sup>For the years 1977, 1978, and 1980, the County Jail reported (via the monthly reports) a greater number of 24-hour-plus detentions than the number of detentions for any length of time reported on the annual survey. It is most likely that the jail staff have misunderstood the directions for completing the monthly reports, and the numbers of 24-hour-plus detentions are too high. The correct count should probably be that shown on the annual surveys.

Comments

The number of minors detained for any length of time has remained fairly constant in San Joaquin County. The data on 24-hour-plus detentions is probably incorrect (see footnote c).

SAN LUIS OBISPO COUNTY

Juveniles Detained For Any Length of Time

Agency/Facility	1976	1977	1978	1979	1980	1981	Notes
Sheriff's Dept.							
County Jail	22	10	11	5	2	2	
City Police Depts.							
Paso Robles	115*	96*	4	167*	132	144	a
Arroyo Grande	0	0	91	42	35	129	
Morro Bay	87*	97*	52	49	90*	72	a
San Luis Obispo	0	0	0	N/A	40	0	b
Grover	0	0	0	0	0	0	c
Pismo Beach	0	0	0	0	266*	0	a, d
County Totals							
Detaining Facilities	3	3	4	5	6	5	
Total Detentions	224	203	158	263	565	359	

N/A - Juveniles were reported detained but number unavailable.

<sup>a</sup>Figures with asterisks appear to include all arrests and not to be limited to secure detentions only.

<sup>b</sup>In 1976 and 1977 the San Luis Obispo Police Department lockup facility was rented to the county, which used it as a juvenile receiving center. No reports on the number of detentions were submitted.

<sup>c</sup>Grover City Police Department developed a holding capacity in 1981.

<sup>d</sup>Pismo Beach Police Department reported 266 temporary detentions in 1980. The P.D. stated that in the absence of a juvenile hall, they detained minors for two to three hours until transport could be arranged to move minors to Santa Barbara County lockup. It is assumed the Pismo Beach P.D. also had some temporary detentions in each of the years they reported zero.

**CONTINUED**

**1 OF 2**



SAN LUIS OBISPO COUNTY

Juveniles Detained in Excess of 24 Hours

Facility	1976 <sup>e</sup>	1977	1978	1979	1980	1981	Notes
County Jail	14	10	7	2	2	2	f

<sup>e</sup>In 1976 reports on 24-hour-plus detentions were collected during July-December only.

<sup>f</sup>In 1981, the county jail annual survey showed that two remanded minors were held over 24 hours. Monthly reports were not submitted.

Comments

The county opened its juvenile hall on October 19, 1981. Prior to that time the San Luis Obispo City Police facility had been converted into a juvenile receiving center, but as such, was not included in the annual surveys. It is not known how many minors were detained in the receiving center.

SAN MATEO COUNTY

Juveniles Detained for Any Length of Time

Agency/Facility	1976	1977	1978	1979	1980	1981	Notes
Sheriff's Dept.							
County Jail	0	6	0	0	0	0	a
Work Furlough	0	0	0	0	0	0	
Honor Camp	0	0	0	0	0	0	
No. County	1,469*	1,235*	93	0	0	0	b, c
Police Depts.							
San Mateo	527*	277*	965*	219	66	N/A	b
Burlingame	155*	126*	0	12	0	0	b
Foster	232*	0	0	0	0	0	b
Hillsborough	0	0	0	0	0	0	
Millbrae	109	141*	57	38	97*	138*	b
San Carlos	N/A	0	36	55	N/A	N/A	
Atherton	30	0	0	0	27	35	
Belmont	419*	39	12	7	15	65	b
Brisbane	99*	127*	0	0	0	0	b
Broadmoor	29*	0	0	0	0	0	b
Colma	0	0	0	0	0	0	
Half Moon Bay	112*	103*	N/A	N/A	100	53	b
Menlo Park	8	6	0	N/A	14	10	
Pacifica	0	0	0	0	195	0	
Redwood City	0	0	0	107	0	321	
San Bruno	546*	577*	356	530	424	0	b
South San Francisco	206	395	N/A	N/A	N/A	N/A	
County Totals							
Detaining Facilities	14	11	8	10	10	9	
Total Detentions	3,941	3,032	1,519	968	938	622	

24-HOUR DETENTIONS: see note a.

N/A - It was reported that juveniles were detained, but number was not available.

<sup>a</sup>In the 1977 annual survey, the county jail reported detaining 6 minors in excess of 24 hours. No monthly reports were completed.

<sup>b</sup>Figures with asterisks appear to include total arrests rather than being limited to secure detentions.

<sup>c</sup>In 1976 and 1977, the sheriff's facility in Daly City (North County) was operated by the city police department.

SAN MATEO COUNTY

Comments

The number of minors reported to be temporarily detained has clearly decreased since 1976. The six minors held in the county jail in excess of 24 hours had been certified by the court.

SANTA BARBARA COUNTY

Juveniles Detained For Any Length of Time

Agency/Facility	1976	1977	1978	1979	1980	1981	Notes
Sheriff's Dept.							
County Jail	5	7	4	2	10	3	
Santa Maria	N/A	1	0	0	0	0	
Honor Farm	0	0	0	0	0	0	
Work Furlough	NS	NS	0	0	0	0	
City Police Depts.							
Lompoc	108	111	0	48	0	275	
Carpinteria	N/A	N/A	24	20	36	60	
Santa Barbara	0	0	0	0	0	N/A	
Santa Maria	0	0	0	300	1,129*	120	a
County Totals							
Detaining Facilities	4	4	2	4	3	5	
Total Detentions	113	119	28	370	1,175	458	

Juveniles Detained In Excess of 24 Hours

Facility	1976 <sup>b</sup>	1977	1978	1979	1980	1981	Notes
County Jail	2	7	4	2	7	N/A	
Santa Maria Branch	0	1	0	0	0	0	c

N/A - Minors were reported detained but numbers not available.  
NS - Not Surveyed.

Note. Deleted from annual survey list is Guadalupe P.D.

<sup>a</sup>The 1,129 detentions in 1980 was thought to include all arrests, rather than limited to secure detentions, but the 1,129 figure was verified by a P&CC consultant.

<sup>b</sup>Data on 24-hour detentions in 1976 were collected only for July to December.

<sup>c</sup>The Sheriff's Department station at Santa Maria reported via the 1977 annual survey that one minor was detained in excess of 24 hours by court order.

SANTA BARBARA COUNTY

Comments

The data from Santa Barbara County have been inconsistent(e.g., see Lompoc P.D.). However, it does appear that the number of juveniles temporarily detained has increased over the period 1976 to 1981.

SANTA CLARA COUNTY

Juveniles Detained For Any Length of Time

Agency/Facility	1976	1977	1978	1979	1980	1981	Notes
Sheriff's Dept.							
County Jail	24	82	29	38	24	23	
Elmwood	0	0	0	0	0	0	
North Sta.	0	0	0	0	0	0	
Milpitas	4	1	8	8	6	6	
City Police Depts.							
Santa Clara	1,035*	1,164*	0	0	1,656*	1,610*	a
Gilroy	216	459*	107	554*	946*	120	a
Morgan Hill	335*	296*	296*	417*	332*	262	a
Mountain View	N/A	N/A	N/A	N/A	N/A	N/A	
Sunnyvale	0	N/A	45	1,250	0	1,279	b
Campbell	0	0	0	0	0	0	
Los Altos	0	0	0	0	0	300	c
Los Gatos	0	0	0	0	0	0	
Milpitas	0	0	0	0	0	0	
Palo Alto	0	0	509*	140	120	541*	a
San Jose	0	0	0	0	N/A	N/A	
County Totals							
Detaining Facilities	6	7	7	7	8	10	
Total Detentions	1,614	2,002	994	2,407	3,084	4,134	

N/A - Minors were reported detained but number unavailable.

<sup>a</sup>Figures with asterisks appear to include total arrests and not be limited to secure detentions only.

<sup>b</sup>In 1980, the Sunnyvale P.D. was contacted and they stated they no longer detain minors. In 1981, Sunnyvale reported that 1,279 minors were detained in temporary holding cells.

<sup>c</sup>In 1981, Los Altos P.D. initiated a temporary holding policy.

SANTA CLARA COUNTY

Juveniles Detained in Excess of 24 Hours

Facility	1976	1977	1978	1979	1980	1981
County Jail	11	82	92	35	24	16
Milpitas Jail	2	1	8	8	8	5

Comments

The number of temporary detentions in Santa Clara county appears to have increased. However, eight facilities provided actual numbers in 1981 (two of which included all bookings) while in 1976, five facilities provided numbers (three of which included bookings). Therefore, due to gross inconsistencies in the reporting of data, no statement can be made about detentions trends. There also appears to be errors in the data on 24-hour-plus detentions. For example, in 1978 the county jail reported 29 total detentions of any length on the annual survey, while reporting 92 detentions in excess of 24 hours on the monthly reports.

SANTA CRUZ COUNTY

Juveniles Detained For Any Length of Time

Agency/Facility	1976	1977	1978	1979	1980	1981	Notes
Sheriff's Dept.							
County Jail	1	0	0	0	0	0	a
Rehab. Ctr.	0	0	0	0	0	0	
Women's W.F.	NS	NS	0	0	0	0	
City Police Depts.							
Watsonville	364*	302	402*	444*	442*	221	b
Capitola	0	0	0	0	0	0	
Santa Cruz	0	0	0	0	0	0	c
Scotts Valley	0	0	0	0	0	0	
County Totals							
Detaining Facilities	2	1	1	1	1	1	
Total Detentions	365	302	402	444	442	221	

NS - Not Surveyed.

<sup>a</sup>CYA disapproved county jail for detention of minors in 1977.

<sup>b</sup>Figures with asterisks appear to include total arrests and not be limited to secure detentions only.

<sup>c</sup>The Santa Cruz P.D. reportedly has no holding capability.

Juveniles Detained in Excess of 24 Hours

Facility	1976	1977	1978	1979	1980	1981
County Jail	1	0	0	0	0	0

Comments

According to the data collected via the annual survey, the Watsonville P.D. is the only agency that detains juveniles temporarily. The county jail has been disapproved for detention since 1977. The other police jurisdictions state that they transport all juveniles to the juvenile hall.

SHASTA COUNTY

Juveniles Detained For Any Length of Time

Agency/Facility	1976	1977	1978	1979	1980	1981
Sheriff's Dept.						
County Jail	17	17	7	0	1	0
Burney Sta.	9	28	25	0	0	0
Crystal Creek	0	0	0	0	0	0
City Police Depts.						
Anderson	0	0	0	0	0	0
Redding	0	0	0	28	5	50
County Totals						
Detaining Facilities	2	2	2	1	2	1
Total Detentions	26	45	32	28	6	50

Juveniles Detained in Excess of 24 Hours

Facility	1976	1977	1978	1979	1980	1981
County Jail	9	23 <sup>a</sup>	15 <sup>a</sup>	0	1	0

<sup>a</sup>For 1977 and 1978, includes some detentions in the Burney Substation Facility.

Comments

The county jail essentially ceased detaining minors in 1979, but the Redding P.D. seems to have started detaining that same year. However, only a very small number of minors are detained in Shasta County.

Preceding page blank

SIERRA COUNTY

Juveniles Detained For Any Length of Time

Agency/Facility	1976	1977	1978	1979	1980	1981
Sheriff's Dept.						
County Jail	14	15	5	17	13	12
Loyalton Sta.	0	0	0	0	6	0

NO DETENTIONS IN EXCESS OF 24 HOURS.

Comments

The Sierra County Jail is a Type I facility, which means it is not designed to hold prisoners for extended periods over 24 hours. Few detentions occur in Sierra County. It is not known why Loyalton reported six detentions in 1980, but none in other years.

Preceding page blank



SISKIYOU COUNTY

Juveniles Detained For Any Length of Time

Agency/Facility	1976	1977	1978	1979	1980	1981	Notes
Sheriff's Dept.							
County Jail	0	0	1	0	0	0	a
City Police Depts.							
Dunsmuir	0	0	0	0	0	0	
Mt. Shasta	0	0	0	0	0	0	
Tulelake	11	4	0	0	0	2	
Dorris	0	0	0	0	0	N/A	
Yreka	0	0	0	0	0	0	
County Totals							
Detaining Facilities	1	1	1	0	0	2	
Total Detentions	11	4	1	0	0	2	

N/A - Minors were reported detained but number unavailable.

Note. Deleted from the annual survey list are the following P.D.s: Weed, Etna, Fort Jones, Montague.

aThe one detention in 1978 was court-ordered and was in excess of 24 hours.

Comments

Although there are few juvenile arrests in Siskiyou County, there are almost no detentions in law enforcement facilities. From other data, we know that very few youths are placed in the county juvenile hall.

Preceding page blank

SOLANO COUNTY

Juveniles Detained For Any Length of Time

Agency/Facility	1976	1977	1978	1979	1980	1981	Notes
Sheriff's Dept.							
County Jail	0	0	0	0	0	0	
Rehab. Ctr.	0	0	0	0	0	0	
Vallejo Sta.	0	0	0	0	0	0	
City Police Dept.							
Benicia	360*	202*	0	121	596*	64	a
Fairfield	0	0	0	0	125	0	
Rio Vista	65*	22*	0	0	3	0	a
Vallejo	343	N/A	N/A	58	12	115	
Dixon	0	0	0	32	0	0	
Vacaville	0	0	0	0	0	0	
Suisun City	0	0	0	0	0	0	
County Totals							
Detaining Agencies	3	3	1	3	4	2	
Total Detentions	763	224	N/A	211	736	179	

NO DETENTIONS IN EXCESS OF 24 HOURS.

N/A - Minors were reported detained but number unavailable.

aFigures with asterisks appear to include all arrests and not be limited to secure detentions only.

Comments

The sheriff's department detains no minors and there have been no 24-hour-plus detentions. There has been spotty or inconsistent reporting of temporary detentions from city police departments.

Preceding page blank

SONOMA COUNTY

Juveniles Detained For Any Length of Time

Agency/Facility	1976	1977	1978	1979	1980	1981	Notes
Sheriff's Dept.							
County Jail	0	1	7	0	1	0	
Honor Farm	0	0	0	0	0	0	
Russian River	98	50	22	26	115	55	
City Police Depts.							
Cloverdale	134*	122*	98*	43*	9	22	a
Healdsburg	102*	79*	119*	109*	100*	178*	a
Petaluma	1,071*	496	345	167	612*	320	a
Sebastopol	188*	187*	139*	169*	176*	120*	a
Sonoma	92*	121*	23	0	0	0	a
Cotati	0	0	0	0	91	64	b
Rohnert Park	0	0	0	457*	55	210	a
Santa Rosa	991	920	725	900	1,769*	490	a
County Totals							
Detaining Facilities							
Total Detentions	2,676	1,976	1,478	1,871	2,928	1,459	

aFigures with asterisks appear to include all arrests and not be limited to secure detentions only.

bIn 1977, Cotati P.D. reported that "minors detained normally no longer than 1 - 2 hours," but reported zero detentions.

Juveniles Detained in Excess of 24 Hours

Facility	1976	1977	1978	1979	1980	1981	
County Jail	0	1	N/A	0	1	0	

N/A - In 1978, the county jail reported that minors were held over 24 hours, but monthly reports were not submitted providing actual numbers.

SONOMA COUNTY

Comments

Due to inconsistencies in the reporting of data, no clear pattern of detention trends can be determined for Sonoma County. The total numbers of detentions are probably overestimates of actual secure detentions since a majority of the police departments appeared to have reported arrests rather than detentions.

STANISLAUS COUNTY

Juveniles Detained For Any Length of Time

Agency/Facility	1976	1977	1978	1979	1980	1981	Notes
Sheriff's Dept.							
County Jail	83	72	22	80	0	0	a
Honor Farm	0	0	0	0	0	0	
City Police Depts.							
Turlock	460*	418*	374	428*	352	345	b
Newman	0	0	0	0	0	0	
Oakdale	0	0	0	8	12	8	
Ceres	0	0	0	0	0	0	
Modesto	0	0	0	N/A	N/A	N/A	
Patterson	0	0	0	0	0	0	
County Totals							
Detaining Facilities	2	2	2	4	3	3	
Total Detentions	543	490	396	516	364	353	

Note. Deleted from annual survey list are P.D.s in Riverbank, Waterford, and Hughson.

N/A - Minors were reported detained but number unavailable.

<sup>a</sup>In 1978, the county jail reported a total of 22 detentions, yet via the monthly reports, indicated that 32 minors were detained in excess of 24 hours. The latter figure is probably erroneously high.

<sup>b</sup>Figures with asterisks appear to include all arrests and not be limited to secure detentions only.

Juveniles Detained in Excess of 24 Hours

Facility	1976	1977	1978	1979	1980	1981	
County Jail	35	61	32	36	0	0	

STANISLAUS COUNTY

Comments

Only a few of the law enforcement facilities in Stanislaus County report holding minors. Juveniles were held for over 24 hours in the county jail from 1976 to 1979, but in 1980 this practice ceased. There has probably been little change in the number of minors temporarily detained countywide.

SUTTER COUNTY

Juveniles Held For Any Length of Time

Agency/Facility	1976	1977	1978	1979	1980	1981	Notes
Sheriff's Dept. County Jail	115	125	1	90	0	1	a
City Police Depts. Yuba City	0	140*	0	0	0	0	b

Note. Deleted from the annual survey list is Live Oak.

<sup>a</sup>Inconsistent reporting. In 1976 the county jail said they had no facilities for housing minors after booking. In 1977 they said they held minors by policy no more than 6 hours (but reported zero). In 1978 they reported one detention, and all other minors were held in the squadroom. In 1979, they reported 90 detentions, but said the cell was to be removed in 1980. In 1980, they reported zero. In 1981, they reported one detention (in excess of 24 hours).

<sup>b</sup>The 140 detentions reported in 1977 may be the total arrests rather than secure detentions.

Juveniles Detained in Excess of 24 Hours

Facility	1976	1977	1978	1979	1980	1981
County Jail	0	0	1	1	0	1

Comments

Even though reporting has been inconsistent, it appears that detentions in Sutter County have been substantially reduced.

TEHAMA COUNTY  
Juveniles Detained in Law Enforcement Facilities

Agency/Facility	1976	1977	1978	1979	1980	1981
County Jail						
For Any Time	0	4	7	2	3	1
24-hours-plus	0	4	N/A	2	2	1
Corning P.D.	0	0	0	0	0	0

Note. Deleted from annual survey list is Red Bluff P.D.

Comments

A new jail was constructed in 1977. Minors were detained in the county jail only on court orders. On the 1978 annual survey, the county jail reported that minors were detained in excess of 24 hours, but the number was not specified, nor did the jail submit monthly reports of 24-hour-plus detentions.

TRINITY COUNTY  
Juveniles Detained in the County Jail

Agency/Facility	1976	1977	1978	1979	1980	1981
County Jail						
Temporary	88	47	33	7	161	31
24-Hours-Plus	14 <sup>a</sup>	8	9	0	N/A <sup>b</sup>	6

<sup>a</sup>Reports on 24-hour-plus detentions in 1976 were collected only for July-December.

<sup>b</sup>On the 1980 annual survey, the county jail stated: "Of the above number (i.e., 161) twenty-two males and one female were arrested and booked into custody. The rest were detained at the facility waiting for parents to pick-up or for transportation to other facilities." It is not known how many of the 23 minors "booked into custody" were held over 24 hours.



TULARE COUNTY

Juveniles Detained for Any Length of Time

Agency/Facility	1976	1977	1978	1979	1980	1981	Notes
Sheriffs' Dept.							
County Jail	9	18	12	6	10	5	
Porterville Sta.	N/A	N/A	136	N/A	N/A	0	
Pixley Sta.	0	0	0	12	0	0	
City Police Depts.							
Porterville	584*	550*	300	0	0	0	a
Lindsay	45*	62*	17	0	0	0	a
Dinuba	131*	110*	N/A	108*	143*	143*	a
Tulare	536*	637*	567*	588*	539*	403	a
Visalia	1,033*	978*	93	104	118	296	a
Woodlake	30*	74*	N/A	68*	0	52*	a
Exeter	0	0	0	0	175*	0	a
County Totals							
Detaining Facilities	8	8	8	7	6	5	
Total Detentions	2,368	2,441	1,125	886	985	899	

Note. Deleted from the annual survey list is Farmersville P.D.

N/A - Minors were reported detained but numbers were not available.

<sup>a</sup>Figures with asterisks appear to include total arrests and not be limited to secure detentions only.

Juveniles Detained in Excess of 24 Hours

Agency/Facility	1976	1977	1978	1979	1980	1981	Notes
County Jail	3	5	15	4	14	5	b

<sup>b</sup>In 1976, 24-hour-plus detention data were collected only during July to December.

Comments

Nearly all of the facilities in Tulare County that reported detention data appeared to have reported arrests rather than secure detentions, and the data are therefore unreliable to use for determining trends or the extent to which detentions occur.

TUOLUMNE COUNTY

Juveniles Detained in the County Jail

Agency/Facility	1976	1977	1978	1979	1980	1981
County Jail						
Temporary	9	18	12	6	10	5
24-Hours-Plus	3 <sup>a</sup>	5	15 <sup>b</sup>	4	4	5

Note. Sonora P.D. is deleted from the annual survey list.

<sup>a</sup>Data on 24-hour-plus detentions in 1976 were collected only during July-December.

<sup>b</sup>In 1978, the county jail reported 12 total detentions on the annual survey, and 15 24-hour-plus detentions via the monthly reports. It may be that the figure 12 is correct and some detentions were counted more than once in the monthly reports.

VENTURA COUNTY

Juveniles Detained For Any Length of Time

Agency/Facility	1976	1977	1978	1979	1980	1981	Notes
Sheriff's Dept.							
County Jail	11	22	21	5	0	0	
East Valley	0	0	0	0	0	0	
Honor Farm	0	0	0	0	0	0	
Oxnard Branch	0	0	0	0	0	0	a
City Police Depts.							
Fillmore	79	0	0	0	0	0	
Port Hueneme	272*	141*	150*	186*	166*	157*	b
Ojai	0	0	0	0	0	0	
Oxnard	507	1,792*	0	0	1,200	912	a, b
Santa Paula	177*	491*	178	54	153*	224*	b
Simi Valley	0	1,213*	0	N/A	N/A	0	b
Ventura	0	0	0	0	1	0	
County Totals							
Detaining Facilities	5	5	3	4	5	3	
Total Detentions	1,046	3,659	349	245	1,520	1,293	

N/A - Minors were reported detained but number unavailable.

<sup>a</sup>In 1978, the Oxnard P.D. reported that its facility was being operated by the Sheriff's Department as a County Adult Male Facility. In 1979, the city jail was still reported to be part of the Sheriff's Department. In 1980, the Oxnard P.D. estimated it temporarily detained 1,200 minors. Confusion prevailed in 1981. The survey labeled "Oxnard Sheriff's Branch Jail" was returned with the comment "This facility is closed." The survey labeled "Oxnard City Jail" was returned showing an estimate of 912 minors temporarily detained. Whether these detentions were booked by the P.D. or Sheriff's Office is beside the point: Apparently detentions occurred in the facility.

<sup>b</sup>Figures with asterisks may include total arrests rather than secure detentions only.

VENTURA COUNTY

Juveniles Detained in Excess of 24 Hours

Facility	1976	1977	1978	1979	1980	1981
County Jail	4	22	20	5	0	0

Comments

The reporting of juvenile detentions in Ventura County has been inconsistent. Little can be determined regarding detention trends, except that few minors are held over 24 hours in jails or lockups (none in 1980 and 1981).

YOLO COUNTY

Juveniles Detained For Any Length of Time

Agency/Facility	1976	1977	1978	1979	1980	1981	Notes
Sheriff's Dept.							
County Jail	N/A	13	5	1	0	0	
Honor Farm	0	0	0	0	0	0	
City Police Depts.							
Davis	DNR	195*	49	12	14	24	a
Woodland	30	52	N/A	0	0	0	
Winters	0	0	0	0	10*	0	a
County Totals							
Detaining Facilities	2	3	3	2	2	1	
Total Detentions	30	260	54	13	24	24	

DNR - Did Not Report.

N/R - Minors were reported detained but number unavailable.

<sup>a</sup>Figures with asterisks appear to include total arrests and not be limited to secure detentions only.

Juveniles Detained in Excess of 24 Hours

Facility	1976	1977	1978	1979	1980	1981
County Jail	N/A	9	5	1	0	0

Comments

There are few minors detained in law enforcement facilities in Yolo County. There tended to be fewer detentions in 1981 than in earlier years.

YUBA COUNTY

Juveniles Detained For Any Length of Time

Agency/Facility	1976	1977	1978	1979	1980	1981	Notes
Sheriff's Dept. County Jail	178	116	0	0	0	0	a
City Police Depts.							
Marysville	0	0	0	N/A	12	10	
Wheatland	8	0	0	0	0	0	
County Totals							
Detaining Agencies	2	1	0	1	1	1	
Total Detentions	186	116	0	N/A	12	10	

N/A - Minors were reported detained but number unavailable.

<sup>a</sup>The county court in 1978 ordered that no minors could be held in the county jail.

Comments

The detention of minors in jails or lockups in Yuba County appears to have decreased substantially over the period.



Preceding page blank

APPENDIX D  
Juveniles Confined in Jails or Lockups  
For More Than 24 Hours - 1981 Calendar Year

Reporting Facility	JUVENILES DETAINED THIS PERIOD									JUVENILES RELEASED THIS PERIOD										Monthly Reports Received
	Total Detentions	Sex		Under 15 yrs. of age	Reason for Detention					Total Releases	Release Dispositions					Other	Mean Length of stay (Days)	No. with Stay of 15 dys or more		
					Further Detention	No Further Detention														
		M	F			602 Off.	601 Off.	Adult Court	CYA De-tainee		Other	Trans-fer to Juv. H.	Trans-fer to Other Juris.	Re-leased out-right	Prob./Parents				Served Sent.	
Calaveras Co. Jail	52	50	2	4	52	0	0	0	0	53	7	12	1	29	3	1	7.0	5	12	
Colusa Co. Jail	78	64	14	7	38	13	0	0	27	75	11	20	5	37	0	2	2.6	0	12	
El Dorado Co. Jail-Placerville	1	1	0	0	1	0	0	0	0	1	0	0	0	0	0	1	16.0	1	12	
Glenn Co. Jail	108	105	3	30	71	0	0	1	36	107	13	19	0	33	3	39	6.1	11	12	
Inyo Co. Jail	44	44	0	12	36	0	0	0	8	49	0	18	2	26	2	1	6.8	6	12	
Kings Co. Jail	15	15	0	0	14	0	0	0	1	16	10	4	0	2	0	0	7.0	2	5	
Lassen Co. Jail	70	64	6	11	69	0	0	1	0	65	1	8	5	40	8	3	5.0	5	12	
L.A. Sheriff - Central Jail	479	479	0	*	*	*	*	*	*	*	*	*	*	*	*	*	*	*	*	
L.A. Sheriff - USC Med. Ctr.	58	55	3	*	*	*	*	*	*	*	*	*	*	*	*	*	*	*	*	
L.A. Sheriff - Sybil Brand	17	0	17	*	*	*	*	*	*	*	*	*	*	*	*	*	*	*	*	

APPENDIX D (cont'd.)  
 Juveniles Confined in Jails or Lockups  
 For More Than 24 Hours - 1981 Calendar Year

Reporting Facility	JUVENILES DETAINED THIS PERIOD									JUVENILES RELEASED THIS PERIOD										Monthly Reports Received
	Total Deten- tions	Sex		Under 15 yrs. of age	Reason for Detention					Total Releases	Release Dispositions					Other	Mean Length of stay (Days)	No. with Stay of 15 dys or more		
		M	F		602 Off.	601 Off.	Adult Court	CYA De- tainee	Other		Further Detention	No Further Detention								
												Trans- fer to Juv. H.	Trans- fer to Other. Juris.	Re- leased out- right	Prob./ Parents				Served Sent.	
Los Angeles County Long Beach P.D.	49	39	10	25	42	7	0	0	0	49	6	3	12	27	0	1	1.5	0	12	
Los Angeles County Inglewood P.D.	21	21	0	7	20	0	0	1	0	21	3	2	8	8	0	0	1.5	0	12	
Mariposa Co. Jail	25	21	4	3	9	5	0	11	0	24	0	13	2	5	4	0	6.5	2	12	
Mendocino Co. Jail	1**	1	0	0	1	0	0	0	0	1	1	0	0	0	0	0	1.5	0	6	
Mendocino Co. Rehab. Center	1**	1	0	0	1	0	0	0	0	1	0	1	0	0	0	0	N/A	1	6	
Modoc Co. Jail	21	16	5	1	17	0	0	0	4	21	0	2	1	10	3	5	4.5	1	12	
Orange Co. Jail (Men & Women)	48	45	3	0	44	0	0	0	4	51	7	31	2	3	6	2	54.7	36	12	
Riverside Sheriff Indio Jail	135	116	19	27	135	0	0	0	0	135	70	6	15	43	0	1	1.6	0	12	
Riverside Sheriff Blythe Jail	93	78	15	18	84	0	0	1	8	93	51	2	1	39	0	0	1.8	0	12	
San Bernardino Sheriff-Glen Helen	2	2	0	0	2	0	0	0	0	1	0	0	0	0	0	0	344.0	1	6	

- 142 -

APPENDIX D (cont'd.)

Juveniles Confined in Jails or Lockups  
For More Than 24 Hours - 1981 Calendar Year

Reporting Facility	JUVENILES DETAINED THIS PERIOD									JUVENILES RELEASED THIS PERIOD										Monthly Reports Received
	Total Deten- tions	Sex		Under 15 yrs. of age	Reason for Detention					Total Releases	Release Dispositions					Other	Mean Length of stay (Days)	No. with Stay of 15 dys or more		
		M	F		602 Off.	601 Off.	Adult Court	CYA De- tainee	Other		Further Detention		No Further Detention							
											Trans-fer to Juv. H.	Trans-fer to Other Juris.	Re-leased out-right	Prob./ Parents	Served Sent.					
San Bernardino Sher. Barstow Jail	34	30	3	8	31	0	0	0	3	34	32	1	1	0	0	0	1.8	0	12	
San Joaquin Co. Jail	9	9	0	0	9	0	0	0	0	8	2	4	0	0	2	0	24.2	6	12	
Santa Clara Co. Jail	16	16	0	0	3	0	4	0	0	19	3	13	0	0	2	1	46.4	15	12	
Santa Clara Co. Women's Jail	5	0	5	0	2	1	1	0	1	7	0	3	1	1	0	2	38.7	5	12	
Trinity Co. Jail	6	5	1	0	5	0	0	0	1	6	4	0	0	2	0	0	1.5	0	12	
Tulare Co. Jail	5	5	0	0	4	0	1	0	0	6	3	3	0	0	0	0	47.9	3	12	
Tuolumne Co. Jail	26	26	0	5	21	5	0	0	0	27	2	11	1	10	0	0	4.5	0	7	

\* Data not available.

\*\* The same minor was confined in both of Mendocino County's detention facilities.

**END**