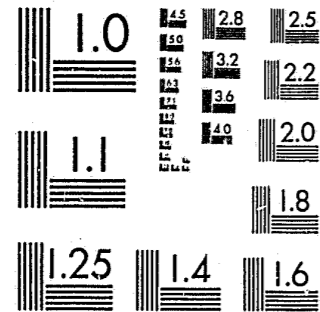


National Criminal Justice Reference Service



This microfiche was produced from documents received for inclusion in the NCJRS data base. Since NCJRS cannot exercise control over the physical condition of the documents submitted, the individual frame quality will vary. The resolution chart on this frame may be used to evaluate the document quality.



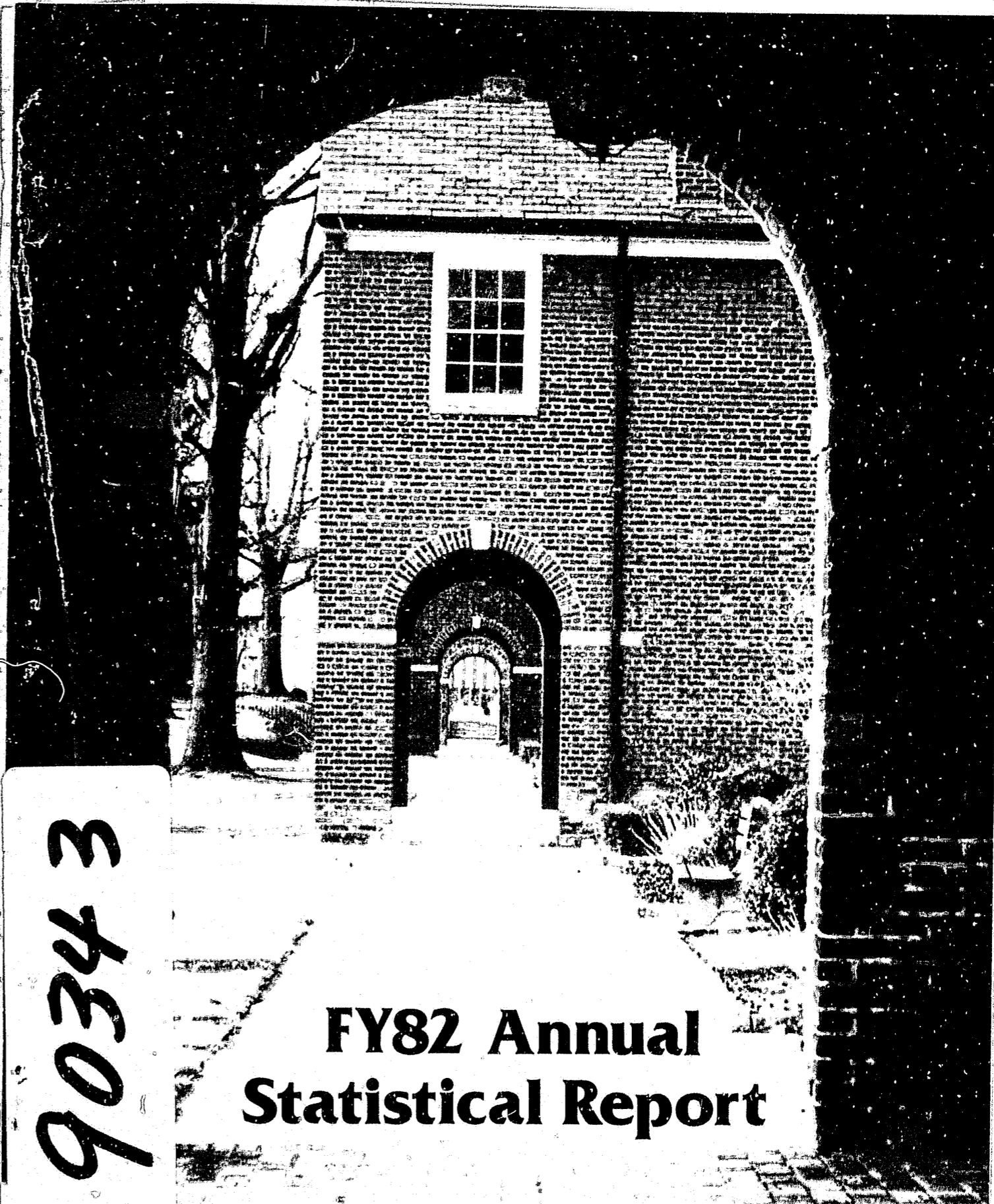
MICROCOPY RESOLUTION TEST CHART
NATIONAL BUREAU OF STANDARDS-1963-A

Microfilming procedures used to create this fiche comply with the standards set forth in 41CFR 101-11.504.

Points of view or opinions stated in this document are those of the author(s) and do not represent the official position or policies of the U. S. Department of Justice.

National Institute of Justice
United States Department of Justice
Washington, D. C. 20531

JAN. 3, 1984



90343

FY82 Annual Statistical Report

July 1981 - June 1982

Fairfax County Juvenile and Domestic Relations District Court • Fairfax, Virginia

BOARD OF SUPERVISORS

Mr. John F. Herrity
Chairman

Mrs. Martha V. Pennino
Centreville District

Mr. Joseph Alexander
Lee District

Mrs. Sandra Duckworth
Mt. Vernon District

Mr. Thomas Davis, III
Mason District

Mrs. Audrey Moore
Annandale District

Mr. James M. Scott
Providence District

Mrs. Nancy Falck
Dranesville District

Mrs. Marie Travesky
Springfield District

Mr. J. Hamilton Lambert
County Executive

Mr. Verdia Haywood
*Deputy County Executive
for Human Services*

4100 Chain Bridge Road
Fairfax, Virginia 22030

U.S. Department of Justice 90343
National Institute of Justice

This document has been reproduced exactly as received from the person or organization originating it. Points of view or opinions stated in this document are those of the authors and do not necessarily represent the official position or policies of the National Institute of Justice.

Permission to reproduce this copyrighted material has been granted by
Fairfax County Virginia
Juvenile & Domestic Relations
District Court
to the National Criminal Justice Reference Service (NCJRS).

Further reproduction outside of the NCJRS system requires permission of the copyright owner.

JUVENILE AND DOMESTIC RELATIONS DISTRICT COURT FY 1982 STAFF

JUDGES

4000 Chain Bridge Road
Fairfax, Virginia 22030
691-3367

Arnold B. Kassabian, *Chief Judge*
Frank L. Deierhoi, *Judge*
Johanna L. Fitzpatrick, *Judge*
Thomas A. Fortkort, *Judge*
Michael J. Valentine, *Judge*
Jan Berry, *Secretary*

DIRECTOR OF COURT SERVICES

4057 Chain Bridge Road
Fairfax, Virginia 22030
691-3343

Vincent M. Picciano, *Director of Court Services*
Faye Chamberlin, *Secretary*
Elaine Kramer, *Training Officer (part-time)*

ADMINISTRATIVE SERVICES

4057 Chain Bridge Road
Fairfax, Virginia 22030
691-3344

Georges R. Augsburger
Chief of Administrative Services (ti 8/81)

Terrie Bousquin, *Computer Manager (part-time)*
Margaret Jackson, *Computer Manager (part-time)*
Mark Jacobs, *Research Analyst*
Elizabeth Kephart, *Clerical Specialist*
Karen Lawrence, *Office Service Manager*
Jeffrey Levine, *Financial Analyst*
Catherine Randall, *Account Clerk II*

CLERK'S OFFICE

4000 Chain Bridge Road
Fairfax, Virginia 22030

Barbara J. Daymude, *Clerk of Court*

Deputy Clerks:

Patricia Berry
Helen Brown
Virginia Dede (r 6/82) (part-time)
Larae Dougall (s 3/82)
Lynn Stack (r 3/82)
Chris Dumphy
Dale Hook (s 2/82)
Janet Ivery
Diane Jenkins (r 10/81)
Pauline Lyon
Linda Nicholson (r 12/81)
Cheryl Payne (r 1/82) (part-time)
Elizabeth Rittenour (s 12/81)
Marge Roberts
Mabel Simmons
Randi Siron (s 2/82)
Deana Stone (r 11/81)

Carolyn Skaritz
Dianne Spencer
Debbie Thomas
Jackie Vall
Vickie Watson-Schoop (r 1/82)
Linda Watts
Marilyn Weeks
Madge Weese (s 3/82)

Court Recorders:

Leona Abat
Patty Maher-Wade
Lorraine Mawyer (s 10/81)
Mary Potts (r 3/82)
Kathy Stone
Carolyn Tanks

COUNSELING SERVICES

4000 Chain Bridge Road
Fairfax, Virginia 22030
691-3343

Franklin D. Pitts, *Assistant Director of Court Services*

NORTH COUNTY UNIT:

8206 Leesburg Pike, Suite 406
Vienna, Virginia 22180
893-5472

Kenneth McLaughlin, *Unit Director*
Linda Weinfeld, *Clerical Specialist*
Wilma McLean, *Clerk (s 8/81) (part-time)*

Counselors:

Don Green
Carol Kutzer (r 5/82)
Stephen Marut
Nancy McIntosh
Jamie McCarron (s 10/81)
James Smith (r 10/81)
West Johnson (ti 9/81)
Gary Nickerson (r 8/81)
Penny Rood

High School Areas Included in Unit:

• Falls Church • Marshall
• Herndon • McLean
• Langley • Oakton
• Madison • South Lakes

SOUTH COUNTY UNIT:

6301 Richmond Highway
Alexandria, Virginia 22306
768-7301

Dave Rathbun, *Unit Director (ti 11/81)*
Eric Assur (to 11/81)
Rozanne Winfield, *Clerical Specialist*
Jo Langin, *Clerk (s 8/81) (part-time)*

Counselors:

Madeline Arter
Christel Bungie
Connie Hollowell (ti 3/82)
Ted Saunders (to 3/82)
Dorthea Madsen
Sandra Morton
Daniel Scrafford
Gerald Smolen

High School Areas Included in Unit:

• Edison • Hayfield
• Fort Hunt • Lee
• Groveton • Mount Vernon

s-start r-resign ti-transfer to-transfer out of unit to another court unit

CENTRAL COUNTY UNIT:

10409 Main Street
Fairfax, Virginia 22030
691-3211

Eric T. Assur, *Unit Director (ti 11/81)*
Georges R. Augsburg (to 8/81)
Anna Swartz, *Clerical Specialist*
Elaine Sovine (s 10/81) (part-time)

Counselors:

Mary Brantley
Ronald Hutchison
Gerald Jackson
William Lilley
Margaret Mahoney
Linda Prosise
Ted Saunders (ti 3/82)
Georgeanne Pesa Langlotz (r 12/81)

High School Areas Included in Unit:

• Annandale • Oakton
• Chantilly • Robinson
• Fairfax • JES Stuart
• Jefferson • W. Springfield
• Lake Braddock • W. T. Woodson

SPECIAL SERVICES UNIT:

10459 Main Street
Fairfax, Virginia 22030
691-3145

Roy Morgan, *Unit Director*
Linda Kerns, *Clerical Specialist*
Linda Meador (to 3/82)
Vondra Brookshire, *Clerk (s 3/82)*

Counselors:

Jerry Bee, *Work Training Counselor*
Nancy Burke, *Community Services Project Counselor*
Richard David, *Placement Officer*
Robin Feldman, *Family Systems Counselor (part-time)*
Frank Fonte, *Family Systems Counselor*
Jeanie Furnari, *Family Systems Supervisor*
Robin Munn (r 10/81)
Kathleen Godsey, *Family Systems Counselor (s 2/82)*
Bob Kabrich, *Parole Counselor*
Cynthia Langfeldt, *Volunteer Coordinator*
Rean Lyddane, *Family Systems Counselor (part-time)*
John Miller, *Parole Counselor*
Peter Roussos, *Diagnostic Team Coordinator*

s-start r-resign ti-transfer

DOMESTIC RELATIONS UNIT:

4000 Chain Bridge Road
Fairfax, Virginia 22030
691-3241

Kathleen Meredith, *Unit Director*
Dave Shaw, *Adult Probation Counselor*
Barbara Wilson, *Clerk Typist*

Counselors:

Joan Blackburn, *Custody Investigator*
Linda Bozoky
Pat Matthews
Maureen McKinney
Ron Merelman
Jerry Rich
Chris Stokes
Arlene Starace, *Custody Investigator (part-time)*

CENTRAL INTAKE UNIT

4000 Chain Bridge Road
Fairfax, Virginia 22030
691-2495

William Reichardt, *Unit Director*

Intake:

Claire Coons, *Night Intake Clerical Specialist*
Ann Cory, *Intake Clerk*
John Fekety, *Night Intake Counselor (part-time) (r 4/82)*
Connie Gooch, *Intake Clerk*
Debbie Groves, *Intake Clerk*
John Henry, *Hearing Officer*
Nanette Hoback, *Night Intake Counselor (part-time)*
Ann Martin, *Supervisory Clerk*
Patricia Mulligan, *Night Intake Counselor (part-time)*
Lynn Nelson, *Night Intake Counselor (part-time)*
Lee Riley, *Intake Counselor*
Kim-Chi Tran, *File Clerk*
Keith True, *Intake Counselor*
Theo Vaughan, *Intake Counselor*
Carolyn Watkins, *Intake Counselor*
Vicki Williams, *Intake Counselor*

Transportation Officers:

Toni Pouchucha (s 3/82)
John Tuell (to 3/82)
Ed Dike (s 7/81)

to-transfer out of unit to another court unit

RESIDENTIAL SERVICES

Joseph Fedeli, *Director of Residential Services*
Margaret Bates, *Clerk (s 9/81) (part-time)*

GIRLS PROBATION HOUSE:

Lucy Masterson, *Program Director*
David Rathbun (to 11/81)
Lynne Pike, *Assistant Director*
DeDra Liddle, *Clerical Specialist*

Counselors:

Janet Albrecht (s 3/82)
Joan Rodgers (to 3/82)
Suzanne Dickinson
Bill Menzin (to 10/81)
Frances DeLoatche
Rick Jank
David Luhr (s 5/82)
Pat Rostkowski (s 2/82) (part-time)
Camilla Stroud (r 11/81)
Ronnie Schecter (s 1/82)
Susan Schiffer (to 3/82)

LESS SECURE SHELTER:

David Marsden, *Program Director (to 5/82)*
Charlotte, Pugh, *Clerical Specialist (part-time)*
Hilton Patrick, *Cook*

Counselors:

Lucy Bailey (s 10/81)
West Johnson (to 9/81)
Michael Cantrell
Joe DiSeati
Dennis Fee
Dorothy Lear
JoAnne Lederman (part-time)
Gwen Robinson

OUTREACH DETENTION COUNSELORS:

Debbie Blair-Kamins
Ann Collins (s 5/82)
Connie Hollowell (to 3/82)
Kenneth Langlotz
Michele Manning
Bob Smith

BOYS PROBATION HOUSE:

4410 Shirley Gate Road
Fairfax, Virginia 22030
691-2589

Bill Menzin, *Director (ti 10/81)*
Susan Schiffer, *Assistant Director (ti 3/82)*
Linda Meador, *Clerical Specialist (ti 3/82)*

Counselors:

Robert Axelrod (s 3/82)
Chauncey Harris (s 3/82)
Rose Morrow (s 3/82)
Teresa Nappier (s 3/82)
Joan Rodgers (ti 3/82)
John Tuell (ti 3/82)
Walter Davis, *Cook (s 3/82)*

JUVENILE DETENTION CENTER:

10650 Page Avenue
Fairfax, Virginia 22030
691-2823

(Facility to open Oct. '82)

David Marsden, *Director (ti 5/82)*

GROUP HOME COORDINATOR:

Michael DeGiorgi

JUVENILE COURT CITIZENS ADVISORY COUNCIL MEMBERS

David J. Kline, *Chairman*
Lee District

Annandale District
Nathaniel Choate

Centreville District
Brackenridge Bentley (s 5/82)
Embry Rucker (r 4/82)

City of Fairfax
Janet Bacon
Roger Peacock (s 2/82)
Corporal Gilbert Barrington (r 2/82)

Dranesville District
Mary Cale (s 5/81)

Mason District
Norene Beach (s 7/81)
Ronald Fisher (r 7/81)

Mt. Vernon District
Christopher Walz (s 7/80)

Providence District
Captain Thomas L. Meeks
Joseph Himes (r 5/82)

Springfield District
Claude Debruhi (s 5/82)

Court Appointees
Dr. Gregory (Max) Schlueter (s 11/80)
At Large
George H. Pearsall

s-start r-resign ti-transfer to-transfer out of unit to another court unit

s-start

r-resign

TABLE OF CONTENTS

	Page
i. FY 1982 Court Staff	
ii. Juvenile Court Citizen Advisory Council Members	
I. General Overview	1
II. Agency Mission	9
III. Juvenile Case Processing	11
Intake	13
Informal Hearing Officer	21
Detention	22
Adjudication	25
Supervision	27
Special Programs	29
IV. Adult Case Processing	35
Adult Criminal Case Processing	35
Support Case Processing	38
V. Comments on the Data	41
VI. The Future	45

NCJRS

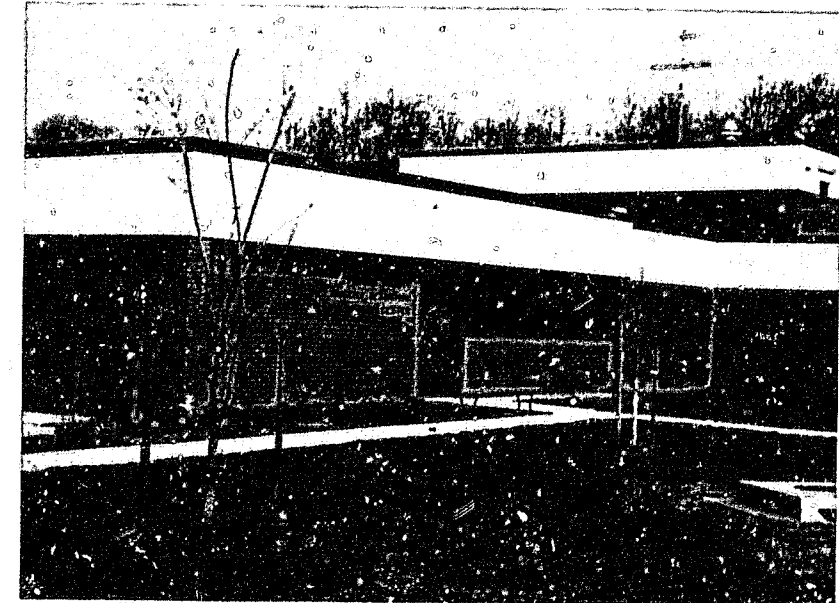
JUL 20 1982

ACQUISITIONS

FIGURES

Fig. No.		Page
1	Complaints, Budget and Personnel, FY 1976-FY 1982	2
2	Statistical Trends, FY 1966-FY 1982	3
3	Organizational Chart	4
4	Agency, Sub-Agency, and Division Mission Statements	9
5	Simplified Case Flow	11
6	Average Times for Juvenile Non-Traffic Complaints	12
7	Sources of Juvenile Non-Traffic Complaints, FY 1978-FY 1982	13
8	Sources of Juvenile Non-Traffic Complaints	14
9	Juvenile Complaints Received by Race and Sex	15
10	Type of Juvenile Non-Traffic Complaint by Sex and Age	16
11	Juvenile Non-Traffic Offender Counts and Recidivism Trends, FY 1980-FY 1982	16
12	Juvenile Complaint Race and Sex Distribution, Traffic and Non-Traffic	17
13	Juvenile Non-Traffic Complaint Race and Sex Distribution	17
14	Trends in Types of Juvenile Complaints, FY 1977-FY 1982	18
15	Juvenile Complaints, Traffic & Non-Traffic FY 1977-FY 1982	18
	Percentage Distribution of Types of Juvenile Complaints:	
16	Including Traffic Cases	19
17	Excluding Traffic Cases	19
18	Intake Dispositions by Type of Juvenile Non-Traffic Complaints	20
19	Hearing Officer Activity FY 1977-FY 1982	21
20	Hearing Officer Activity FY 1977-FY 1982	21
21	Juveniles Detained by Place, Race, and Sex	22
22	Secure Confinement Trends, FY 1977-FY 1982	23
23	Detention Days, FY 1977-FY 1982	23
24	Average Length of Stay by Age for Juveniles Held in Juvenile Detention	24
25	Average Length of Stay by Age for Juveniles Held in the Adult Detention Center	24
26	Average Length of Stay for Juveniles Detained, FY 1978-FY 1982	24
27	Commitments to State Department of Corrections from Fairfax County, FY 1977-FY 1982	25
28	Docketed Court Transactions, FY 1977-FY 1982	26
29	Age and Sex of Juveniles Under Supervision	27
30	Race and Sex of Juveniles Under Supervision	28
31	Status Distribution - Juvenile Cases Under Supervision	28
32	Caseloads of Programs and Residential Facilities, FY 1977-FY 1982	33
33	Volunteer Services, FY 1980-FY 1982	33
34	Utilization and Costs of Residential Facilities	33
35	Adult Complaints Received by Race and Sex	35
36	Adult Complaints, FY 1977-FY 1982	36
37	Adult Offender Counts and Recidivism Trends FY 1980-FY 1982	36
38	Average Processing Times for Adult Complaints	37
39	Adult Warrant and Petition Race and Sex Distribution	37
40	Support Account and Amounts Collected for Support, Fines, Costs, and Restitution, FY 1975-FY 1982	39
41	Restitution, Fines and Costs Collected, FY 1975-FY 1982	39
42	Support Collected, FY 1975-FY 1982	39

I. GENERAL OVERVIEW



The Fairfax County Juvenile and Domestic Relations District Court is responsible for adjudicating juvenile matters, offenses committed by adults against juveniles, and family matters except divorce. The Court offers comprehensive services for delinquent youngsters under the legal age of 18 who live in Fairfax County, the City of Fairfax, and the towns of Herndon, Vienna, and Clifton. In addition, the Court provides services to adults in these jurisdictions who are experiencing domestic and/or familial difficulties which are amenable to unofficial arbitration, to counseling, or to legal intervention. The Court also provides services required in adult criminal complaints for offenses committed against juveniles unrelated to them.

Prior to 1956, all juvenile and domestic relations cases were heard by a County Court judge, and all probation and investigation functions were handled by the County's Department of Public Welfare. In 1956, the County Board of Supervisors established a separate probation office for the Court with a Chief Probation Officer, three probation officers and two clerical staff. Court was in session one day a week with the Chief Judge of the County Court presiding.

In 1962, the Court expanded hearings to three days a week, with each County Court judge sitting for one day. In 1965, the first full-time Juvenile Judge was appointed and court met daily. In FY 1980, there were four full-time Judges of the Juvenile and Domestic Relations Court. In the spring of 1980, the General Assembly approved the appointment of a fifth full-time Judge to begin sitting on July 1, 1980.

The increase in complaints, approved fiscal plans, expenditures, revenues, and staffing levels since FY 1976 is shown in Figure 1. Figure 2 trends population levels and selected activity counts. The significant increase in juvenile complaints in FY 1974 was largely a result of a change in the Code of Virginia which required the hearing of all traffic cases in the Juvenile and Domestic Relations District Court beginning September, 1973, rather than splitting the cases between the Juvenile and Domestic Relations District Court and the General District Court. Some of the increase shown in FY77 may be attributable to the implementation of an automated information system, which resulted in more accurate counting procedures.

**FIGURE 1
COMPLAINTS, BUDGET AND PERSONNEL
FAIRFAX COUNTY JUVENILE AND DOMESTIC RELATIONS DISTRICT COURT
FY 1976 - FY 1982**

	FY76		FY77		FY78		FY79		FY80		FY81		FY82	
	NO.	%±	NO.	%±	NO.	%±	NO.	%±	NO.	%±	NO.	%±	NO.	%±
COMPLAINTS														
Juvenile	11,234	(0.8)	14,546	29.5	16,493	13.4	17,908	8.6	18,181	1.5	17,498	(3.8)	16,960	(3.1)
Adult	1,195	(23.4)	3,756	96.3	3,486	(7.2)	3,770	8.1	4,336	7.2	4,817	11.1	5,411	12.3
APPROVED FISCAL PLAN (excludes grants)														
Personal Services Operating Expenses	1,595,863	46.8	1,446,160	(10.4)	1,803,826	24.8	1,934,662	7.3	2,325,404	20.1	2,583,250	11.1	3,204,774	24.1
ACTUAL EXPENDITURES (excludes grants)														
Personal Services Operating Expenses	1,190,736	29.0	1,053,746	(11.5)	1,329,363	26.2	1,412,305	6.3	1,768,053	25.1	2,015,357	14.0	2,470,160	22.6
Capital Equipment	397,976	51.3	390,167	(2.0)	470,217	20.6	511,425	8.8	551,952	7.9	567,893	2.9	734,614	29.4
ACTUAL REVENUE/GRANTS														
Va. Dept. of Corrections Grants and Costs	1,089,220	37.8	906,124	(16.8)	1,083,084	19.5	1,031,752	(4.7)	1,217,095	18.0	1,378,821	13.3	1,467,671	6.4
Fines	452,343	(1.2)	505,629	11.8	668,042	32.2	746,432	11.8	1,054,236	41.2	1,127,747	7.0	1,347,171	19.5
Maintenance Grant	436,877	135.8	312,932	(28.4)	287,826	(8.1)	138,295	(52.0)	90,908	(34.2)	57,105	(37.2)	1,299	(97.7)
STAFFING LEVELS														
Judges	98	16.7	98.0	0	110.5	12.8	114.5	4.0	123.6	7.9	134.2	9.6	186.0	38.5
Professional	3.0	0	3.0	0	4.0	33.3	4.0	0	4.0	0	5.0	25	5.0	0
Clerical and Maintenance Grant	51	0	51.0	0	58.5	14.7	62.5	6.8	69.4	11.0	75.0	8.1	124.0	65.3
	30	28.0	31.0	3.4	34.0	9.7	38.0	11.8	41.2	8.4	45.2	9.7	57.0	26.1
	14	7.7	13.0	(7.1)	14.0	9.7	10.0	(28.6)	9.0	(10.0)	9.0	0	0	(100)

¹Includes Outreach Detention Staff (5 SYE) which were exempt positions through FY82.
²Increases in staff and expenditures during FY82 are largely attributable to the opening of the Boys' Probation House, and the authorization for 40 positions at the Juvenile Detention Center, only one of which was actually filled during the fiscal year.

The development of special programs to augment traditional probation services is particularly important in the Court's development. Many of these innovations were made possible by the availability of federal grant funds and have subsequently been funded by the county. The specialized programs include the informal hearing officer, emergency foster homes, group homes, the Work Training Program, the Community Services Project, Family Systems Counseling, the Diagnostic Team, Outreach Detention, the Less-Secure Shelter, five different alternative schools, the Volunteer Learning Program, two Probation Houses, school probation officers, and Support Enforcement.

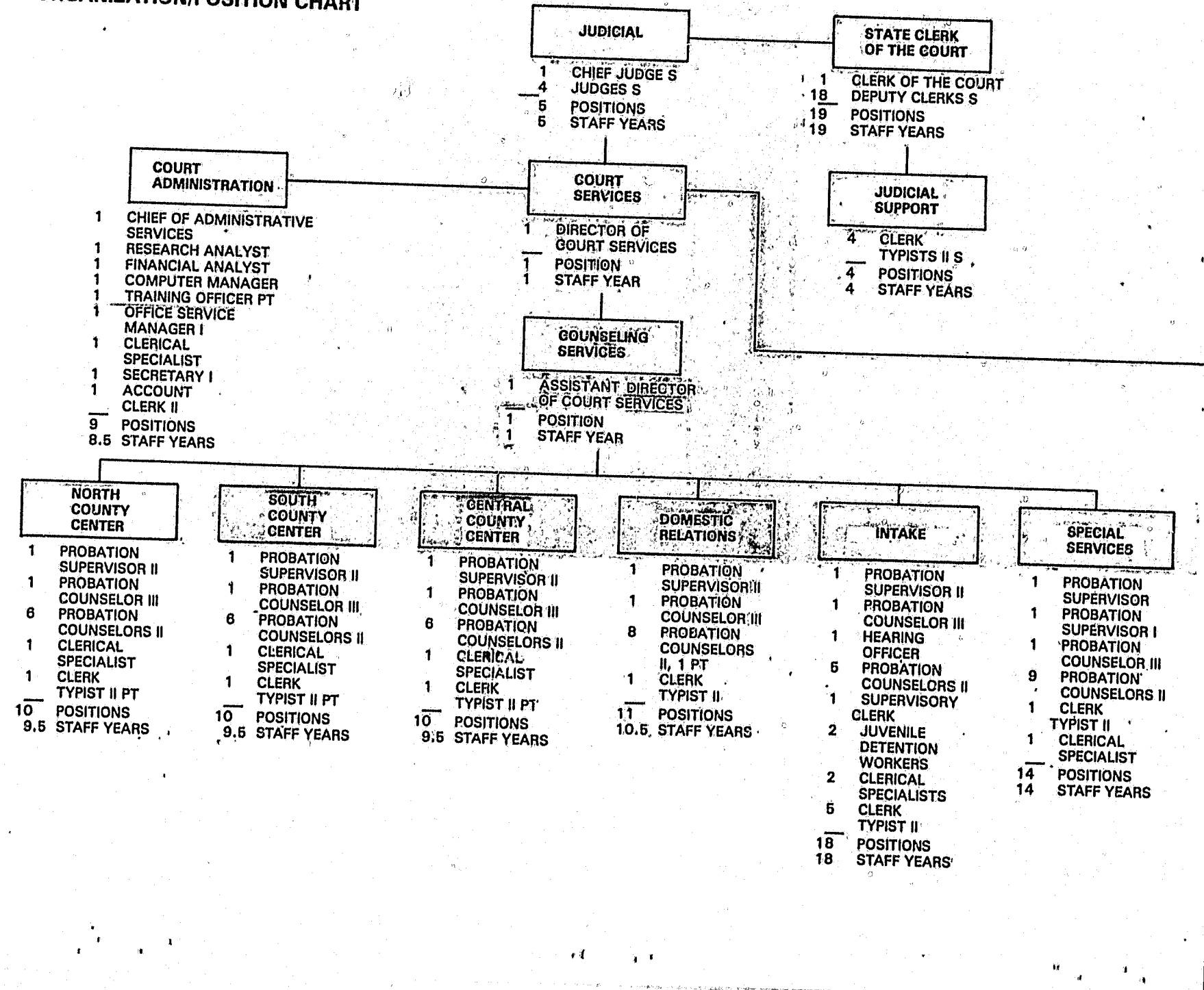
Due to space limitations in the central complex and a desire to provide more readily accessible services to the community, the Court has decentralized its services throughout the county. A branch office opened in McLean in the spring of 1973 to provide intake, investigation, and probation functions. A second branch office with the same responsibilities was opened in the Mount Vernon area in late 1973. At the same time, the Central County services were divided into two units. All probation and investigation services were organized into one unit while intake and support services were combined into another unit. An additional unit, the Special Services Unit, was established in the summer of 1973, to operate established programs such as group homes, family counseling, the work training program, probation houses and volunteer services.

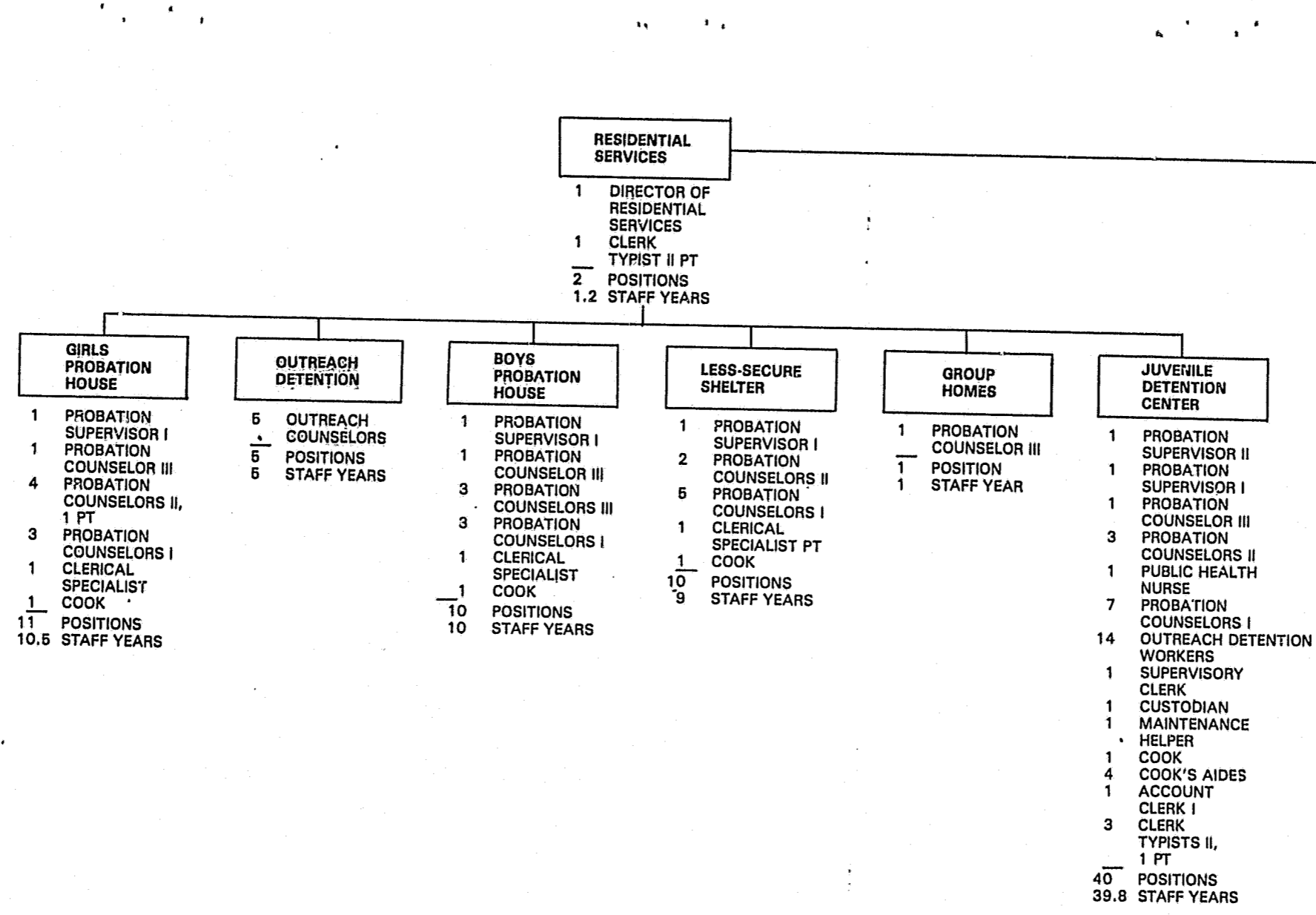
FIGURE 2
STATISTICAL TRENDS
FY 1966 - FY 1982

FISCAL YEAR	TOTAL COUNTY POPULATION (a)	COUNTY JUVENILE POPULATION (b)	DELINQUENCIES (c)	JUVENILE COMPLAINTS PER JUVENILE POPULATION	NON-SUPPORT ACCOUNTS (d)	LICENSES ISSUED	ADULT COMPLAINTS (e)	ADULT COMPLAINTS PER CAPITA
1966	368,900	60,560	1,807	.030	840	6,797	1,411	.004
1967	398,300	65,410	1,972	.030	943	6,454	1,486	.004
1968	429,600	70,350	2,005	.029	917	6,967	1,636	.004
1969	453,700	75,580	2,472	.033	990	8,170	1,848	.004
1970	477,000	80,480	3,122	.039	1,062	9,500	1,904	.004
1971	492,600	83,800	3,129	.037	1,340	10,888	2,159	.004
1972	509,400	86,980	3,640	.042	1,555	9,952	2,235	.004
1973	526,000	88,010	4,259	.048	1,841	9,869	2,145	.004
1974	544,000	89,020	4,824	.052	1,876	14,987	2,694	.005
1975	559,200	89,450	3,935	.044	2,818	12,423	2,500	.004
1976	576,200	89,770	3,462	.038	2,112	9,245*	1,915	.003
1977	583,800	87,950	5,307	.060	2,168	12,994	2,617	.004
1978	591,800	86,280	6,326	.073	2,286	13,653	2,556	.004
1979	605,800	85,130	6,179	.073	2,513	11,984	2,724	.004
1980	619,700	83,620	5,839	.070	2,760	11,902	3,036	.005
1981	633,100	85,240	6,152	.072	3,014	13,665	3,215	.006
1982	639,900	83,300	5,575	.067	3,290	10,822	3,260	.006

a. Includes Fairfax City. Sources: Fairfax County Office of Research Statistics, and Tayloe-Murphy Institute (for Fairfax City).
b. September public school memberships, grade 5-12, excluding grades 5-6 special education.
c. Juvenile complaints excluding traffic, custody, rules, capiases, reviews, attorney appointments, pre-trial motions, record inspection requests, seeing intake counselors for information, and leaving without seeing intake counselor.
d. As of June 30.
e. Complaints excluding rules, capiases, reviews, attorney appointments, pre-trial motions, seeing intake counselors for information, and leaving without seeing intake counselor.
*Not the entire fiscal year - October 1975 - June 1976 only.

4 FY 1982 JUVENILE COURT ORGANIZATION/POSITION CHART



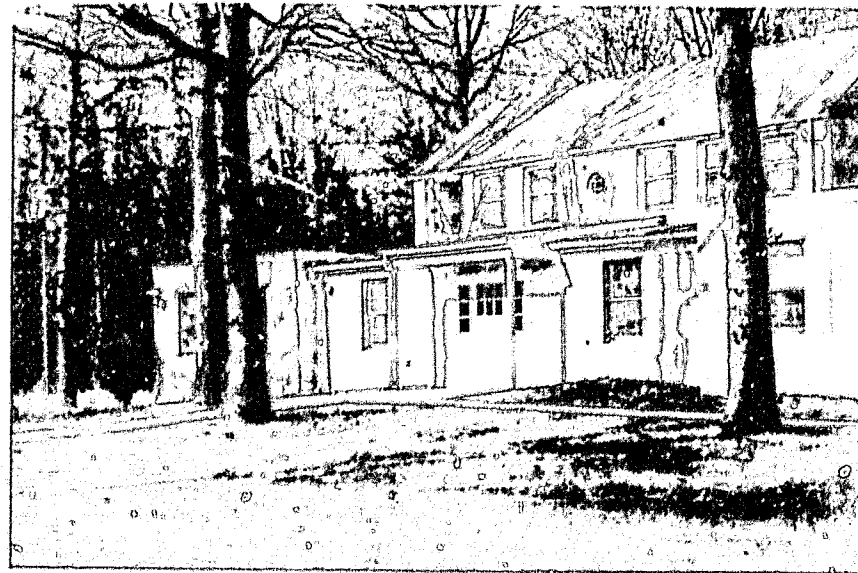


PT DENOTES PART TIME POSITION
 S DENOTES STATE POSITION

Another major change in the Court's organization resulted from the Court Reorganization Act of 1973. As of July 1974, all judges and those clerical personnel who performed jobs directly related to judicial rather than probation functions became state employees and the responsibility of the Executive Secretary of the Supreme Court. A separate Clerk of the Juvenile and Domestic Relations District Court was appointed in the fall of 1974, and all state clerks became responsible to her. In FY 1980, the Chief Judge decided that court recorders would also become state employees, effective July 1, 1980. That portion of the court staff comprised of county employees also underwent reorganization in FY 1980, with the establishment of three divisions: Counseling Services, Residential Services, and Administrative Services. The position of Assistant Director of Court Services was created to head the Counseling Services Division. A Domestic Relations Unit was formed within the Operations Division, consolidating adult probation, custody investigations, and support enforcement. Figure 3 shows the FY 1982 organization of the Court.

An automated information system, JUVARE (Juvenile and Adult Recording and Evaluation System), was implemented in June 1976. This system provides on-line computer capabilities both in the courthouse and in branch offices for all case processing. It also generates management reports.

On July 1, 1977, significant revisions to the Virginia Juvenile Code took effect. Among other things, these revisions provided distinct rules and procedures at all stages of the court process for dealing with CHINS (Children in Need of Services, previously called status offenders), delinquents, neglected and abused children, and children whose custody requires determination.



Since 1975, the Court has opened a number of residential facilities to implement a trend toward community corrections. In FY 1975, construction began on the Girls' Probation House, which accepted its first resident in October 1975. This is a minimum security facility which offers a structured program of school, rehabilitative treatment, and recreation as an alternative to state commitment. In FY 1980, the Virginia Department of Corrections and the Fairfax County Board of Supervisors approved funds for a corresponding facility for boys, the Boys' Probation House. A structure was purchased in October, 1980, and after redesign and renovation, the facility opened in April 1982.

The Court instituted an Outreach Detention program in 1978, providing intensive in-house supervision to children who might otherwise require pre-dispositional holding.

In January 1980, the Less-Secure Shelter opened as a holding facility for CHINS offenders, who according to the revised Code cannot be kept in a secure facility longer than one court day. When the grant funding of this facility terminated on October 31, 1980, with the county assuming its costs, it marked the first time in over a decade that the court was not receiving grant funding for any of its programs or placements. In April 1982, Less-Secure moved into a separate wing of the new Juvenile Detention Center, where its capacity could be expanded to 12, and where it could also house delinquent offenders not requiring secure detention.

Groundbreaking for the new Juvenile Detention Center was held in February 1981, with construction completed in the spring of 1982. A Director was hired in May to supervise the process of procuring needed staff and equipment in preparation for opening the 33-bed facility in October 1982.

The process of architectural design for renovation of the historic courthouse is underway. This renovation will provide more space for the Juvenile Court, following relocation of the adult courts and related agencies in the new Judicial Center also completed during the spring of 1982.

The trend in court and probation services clearly has been to provide specialized services directed at delivering a range of correctional programs to its offender population. It is anticipated that this trend will continue, with the Court significantly focusing in the coming years on research to help determine which services are most appropriate for specific offenders.

II. AGENCY MISSION



During FY 1981, the Juvenile Court was one of seven county agencies to participate in a pilot project of developing a system of Management by Objectives (MBO). Considerable efforts were invested in formulating mission statements, general objectives, performance objectives, and workplans to guide managerial and line activity. Figure 4 displays the mission statements adopted for the agency as a whole, for each area, for each area of major functional responsibility, and for each division.

FIGURE 4 AGENCY, SUB-AGENCY, AND DIVISION MISSION STATEMENTS

The mission of the Fairfax County Juvenile and Domestic Relations District Court is to provide efficient, effective and equitable judicial and court service programs which promote positive behavioral change for those children and adults who come within the court's authority, to act in conformance with orders of the court, the provisions of law as contained in the Code of Virginia of 1950 as amended, caselaw, and Department of Corrections Minimum Standards, consistent with the well-being of the client, his/her family, and the protection of the community.

Judicial Administration Mission: To provide efficient and effective judicial services for those children and adults who come within the Court's authority to act, in conformance with the provisions of law as amended, caselaw, State Supreme Court policies, and the protection and well-being of the community.

Court Service Unit Mission: To provide efficient and effective Court Service programs for those children and adults who come to the attention of, or are referred to the unit, in conformance with orders of the Court, the provisions of law as contained in the Code of Virginia of 1950 as amended, caselaw and Department of Corrections Minimum Standards, consistent with the well-being of the client, his/her family and the protection of the community.

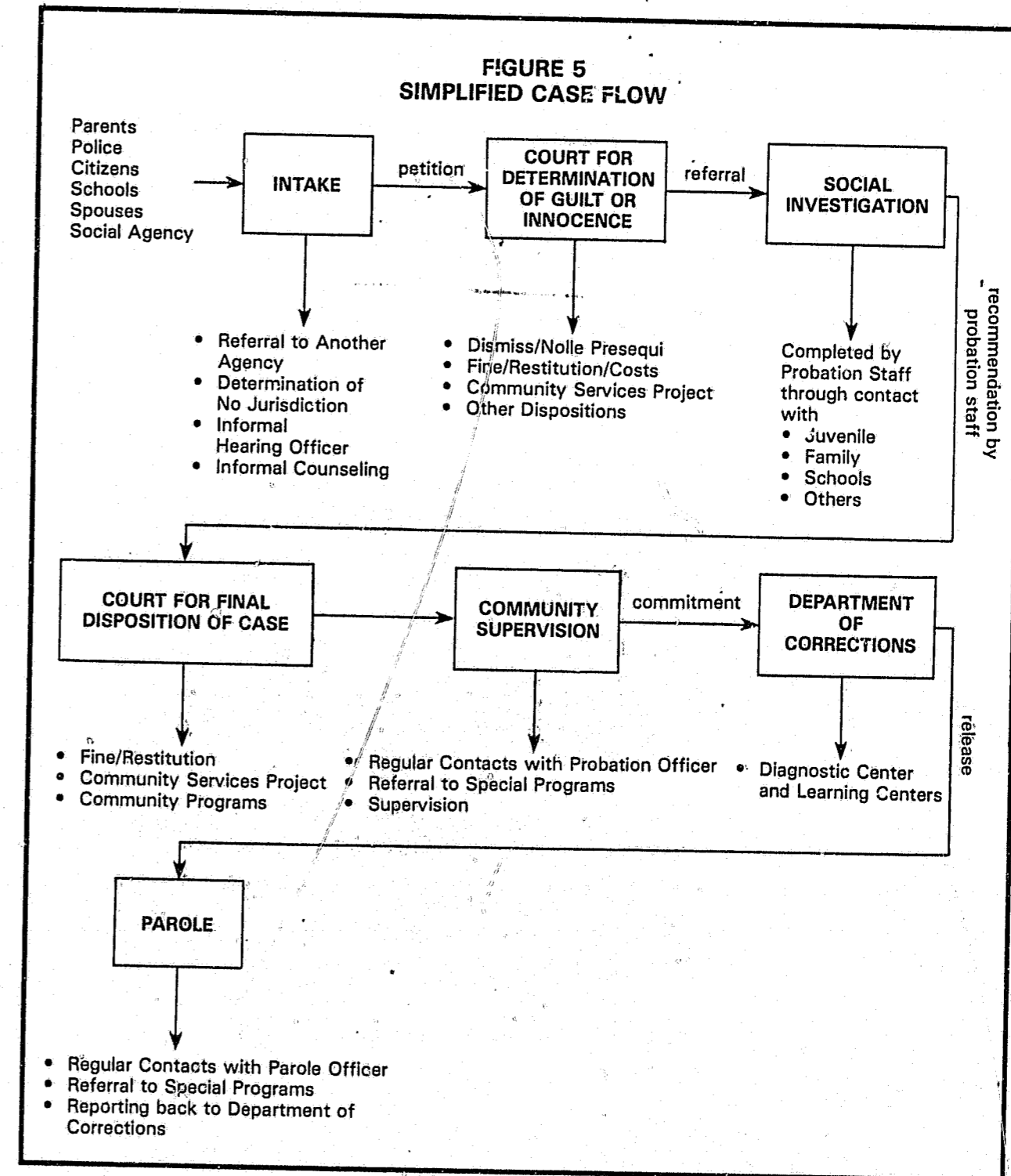
Administrative Services Division Sub-Mission: To receive, process, complete and evaluate all fiscal, financial, budgetary, personnel and data management activity as required for the efficient operation of the Court Service Unit.

Probation Services Division Sub-Mission: To provide to children, adults and families in Fairfax County community, social, rehabilitative and correctional programs and services that meet Department of Corrections standards and statutory and judicial requirements.

Residential Services Division Sub-Mission: To provide efficient, effective, accredited residential care programs and services to youths and their parents who come within the Court's authority to act and who require such services.

III. JUVENILE CASE PROCESSING

Juvenile cases which progress through the entire juvenile system undergo the following sequence of processing stages, as represented schematically in the simplified case flow chart below: intake, adjudication, social investigation, disposition, court supervision, commitment, and after-care supervision. Cases do not necessarily go through all stages.



The following table presents trends in the average time required to process juvenile non-traffic complaints through these sequential stages.

**FIGURE 6
AVERAGE PROCESSING TIME (CALENDAR DAYS)
FOR JUVENILE NON-TRAFFIC COMPLAINTS FY 1980 - FY 1982**

PROCESSING STAGE	RELEVANT SUBGROUP OF CASES	FY 1980	FY 1981	FY 1982
Alleged offense to intake	Complaints which specify date of alleged offense	17.5	19.0	21.5
Intake to first hearing	Complaints set for court more than 3 days after intake	38.3	38.2	39.2
Assignment of social investigation to hearing on report	Cases in which judge orders investigation	63.0	75.0	59.5
Start to end of supervision	Cases assigned for supervision	266	273	288

INTAKE



Juveniles thought to have committed offenses which are under the purview of the Juvenile Court are brought into the judicial system either by a police officer witnessing or responding to an alleged criminal offense, or by citizens, families, or other agencies. Below is shown the sources of complaints for the past five years.

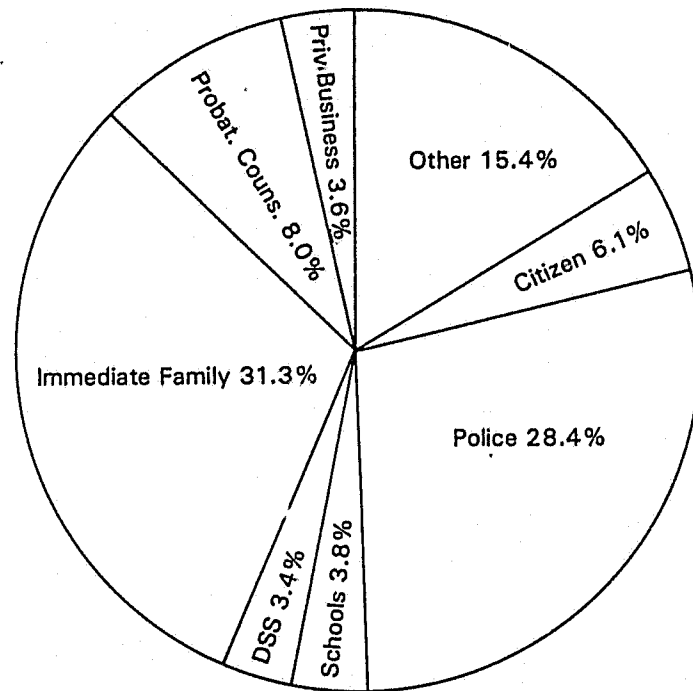
**FIGURE 7
SOURCES OF JUVENILE NON-TRAFFIC COMPLAINTS, FISCAL YEARS 1978* - 1982**

SOURCE	SEPT. 1, 1977- JUNE 30, 1978*	FY 1979	FY 1980**	FY 1981	FY 1982
	%	%	%	%	%
Police	37.5	37.4	34.8	33.5	28.4
Immediate Family	27.8	27.7	29.6	30.5	31.3
Citizen	11.4	7.1	8.3	5.6	6.1
Private Business	5.8	7.3	6.3	5.2	3.6
Probation Counselor	3.2	5.1	4.7	6.5	8.0
DSS	3.0	3.6	3.2	3.4	3.4
School	3.4	2.9	2.8	3.5	3.8
Other Relative	1.5	1.0	1.3	1.2	3.7
Other Juvenile Court	1.1	1.1	1.0	1.5	1.2
Other Public Agency	.6	.6	1.3	2.9	4.2
Self	.3	.6	.5	.5	.6
Other	4.5	5.6	6.1	5.8	5.8
TOTAL	100%	100%	100%	100%	100%

* This information was recorded beginning September 1, 1977, and therefore is available for only part of fiscal year 1978.

** Due to programming error, this information is missing for January-February 1980.

**FIGURE 8
SOURCES OF JUVENILE NON-TRAFFIC COMPLAINTS, FY 82**



Although they accounted for under 30% of the juvenile non-traffic complaints during FY 82, the police were responsible for 69% of all complaints alleging drug offenses, 45% of all complaints alleging crimes against persons, 69% of all complaints alleging offenses against property, and 66% of all complaints alleging crimes against the public peace.

Immediate family members brought 62% of all complaints received which alleged status or CHINS offenses (offenses involving behavior that would not be considered criminal if committed by adults), and 69% of all complaints involving custody issues.

Over 50% of all alcohol complaints were brought by the Virginia Alcoholic Beverage Control Commission.

Of the complaints brought by private citizens, 30% alleged property offenses, 34% alleged offenses against persons, and 6% involved custody issues.

In FY 1982, the complaints received against juveniles by race and sex were:

**FIGURE 9
JUVENILE COMPLAINTS RECEIVED BY RACE AND SEX
FY 1982**

	WM	WF	NWM	MWF	TOTAL		WM	WF	NWM	NWF	TOTAL
Property Offenses						Marijuana Possession					
Auto Larceny	144	28	28	7	207	Drug Offense	86	22	4	0	112
Breaking & Entering	448	42	96	3	589	SUB TOTAL	496	174	18	5	693
Grand Larceny	112	18	38	10	178	CHINS Offenses					
Petit Larceny	261	97	120	33	511	Beyond Parental Control					
Vandalism	203	30	37	3	273	Runaway	218	211	31	27	487
Trespassing	234	55	28	1	318	Truancy	60	148	2	16	226
Concealment	55	59	51	24	189	Other	88	68	14	12	182
Fraud	33	10	3	2	48	SUB TOTAL	3	2	0	0	5
Receiving Stolen Property	29	3	15	3	50	SUB TOTAL					
Arson	14	1	2	0	17	369	429	47	55	900	
Throwing Missiles	36	1	3	0	40	Custody					
Tampering	20	1	0	0	21	770	759	165	167	1,861	
Other	16	0	10	1	27	Traffic					
SUB TOTAL	1,605	345	431	87	2,468	5,595	1,507	327	92	7,521	
Offenses Against Persons						Other					
Assault	225	73	77	37	412	Rule, Capias	355	133	117	27	632
Robbery	14	2	25	2	43	Review	247	232	50	44	573
Sex Offense	24	0	7	0	31	Violation of Probation or Parole					
Firearm in Felony	2	0	3	1	6	237	131	48	23	439	
Abduction	8	4	2	1	15	See Intake Counselor for Information					
Murder	0	1	1	0	2	266	201	50	40	557	
Other	10	1	1	2	14	Request for Courtesy Supervision					
SUB TOTAL	283	81	116	43	523	31	8	14	3	56	
Offenses Against the Public						Request for Courtesy Investigation					
Disorderly Conduct	30	13	12	3	58	7	1	4	1	13	
Weapons Offense	33	2	19	0	54	Transfer from other Va. Court					
Curse & Abuse	42	24	8	6	80	0	0	2	4	6	
Telephone Abuse	17	25	1	1	44	Attorney Appointment					
Escape Custody	15	3	4	3	25	28	7	17	5	57	
Other Offense Against Admin. of Justice	12	8	5	2	27	Pre-trial Motion					
Other	45	12	6	2	65	79	56	13	14	162	
SUB TOTAL	194	87	55	17	353	Mental Petition					
Drug and Alcohol Offenses						Mental Retardation Petition					
Drunk in Public	117	32	7	2	158	1	1	0	0	2	
Other Alcohol	251	100	6	3	360	Complainant Left Without Seeing Intake					
						0	5	0	0	5	
						Other					
						73	26	15	3	117	
						SUB TOTAL					
						1,332	813	332	164	2,641	
TOTAL						10,644	4,195	1,491	630	16,960	

WM = White Males
WF = White Females
NWM = Non-White Males
NWF = Non-White Females

**FIGURE 10
TYPE OF JUVENILE NON-TRAFFIC COMPLAINT BY SEX AND AGE
FY 1982**

OFFENSE TYPE	AGE UNKNOWN		LESS THAN 13		13		14		15		16		17		OVER 17	
	M	F	M	F	M	F	M	F	M	F	M	F	M	F	M	F
	Offense against property	4	3	215	30	218	28	296	59	333	124	445	110	522	77	3
Offense against persons	0	1	41	12	26	15	70	20	61	28	72	22	126	26	3	0
Offense against the public and morality	0	1	12	7	24	18	34	16	38	14	49	26	91	22	1	0
CHINS	0	0	19	15	51	46	95	108	97	123	98	135	55	56	1	1
Drug and Liquor	0	0	1	6	7	7	13	11	65	30	152	56	274	69	2	0
Custody	108	110	711	662	40	27	26	32	18	31	16	39	14	23	1	1
Other	24	27	393	331	98	49	137	94	220	143	294	168	370	140	127	25
SUB TOTAL	136	142	1,392	1,063	464	190	671	340	832	493	1,126	556	1,452	413	138	28
SUB TOTAL BY SEX:	Males 6,211				Females 3,225											
GRAND TOTAL:	9,436															

Since it is possible for a single juvenile to be the subject of several different complaints, the number of complaints as reported in the chart above differs from the number of alleged offenders. The table below trends the number of non-traffic offenders from FY 1980-FY 1982, as well as the changing proportions of first-offenders to repeat-offenders, and of first-offenders who return to Intake for new criminal charges within the fiscal year to first-offenders who do not return. In FY 1982, 10,231 different juveniles had at least one alleged offense either traffic or non-traffic.

**FIGURE 11
JUVENILE NON-TRAFFIC OFFENDER
COUNTS AND RECIDIVISM TRENDS
FY 1980 - FY 1982**

	FY 1980	FY 1981	FY 1982
Alleged offenders in given year <i>with</i> complaints in previous years	1,889 (33.8%)	1,908 (32.9%)	1,908 (33.4%)
Alleged offenders in given year <i>without</i> complaints in previous years			
• who <i>do return</i> to court that year	300 (5.4%)	299 (5.2%)	262 (4.6%)
• who <i>do not return</i> to court that year	3,407 (60.9%)	3,585 (61.9%)	3,546 (62.1%)
TOTAL	5,596 (100%)	5,790 (100%)	5,714 (100%)
Average no. of complaints per alleged offender in given year	1.66	1.69	1.65

The chart below shows the changing distribution of juvenile complaints by race and sex since FY 1977:

**FIGURE 12
JUVENILE COMPLAINT* RACE AND SEX DISTRIBUTION,
TRAFFIC AND NON-TRAFFIC
FY 1977 - FY 1982**

	FY 1977	FY 1978	FY 1979	FY 1980	FY 1981	FY 1982
White Male	68.9%	68.0%	68.9%	68.0%	67.1%	64.6%
White Female	23.7	23.0	21.3	21.2	22.5	23.8
Non-White Male	5.5	7.0	7.2	8.2	7.8	8.3
Non-White Female	1.9	2.0	2.6	2.6	2.6	3.3
TOTAL	100%	100%	100%	100%	100%	100%
n	14,546	15,967	16,467	16,439	15,698	14,971

*Excluding rules, capiases, reviews, attorney appointments, pre-trial motions, record inspection requests, seeing intake counselors for information, and leaving without seeing an intake counselor.

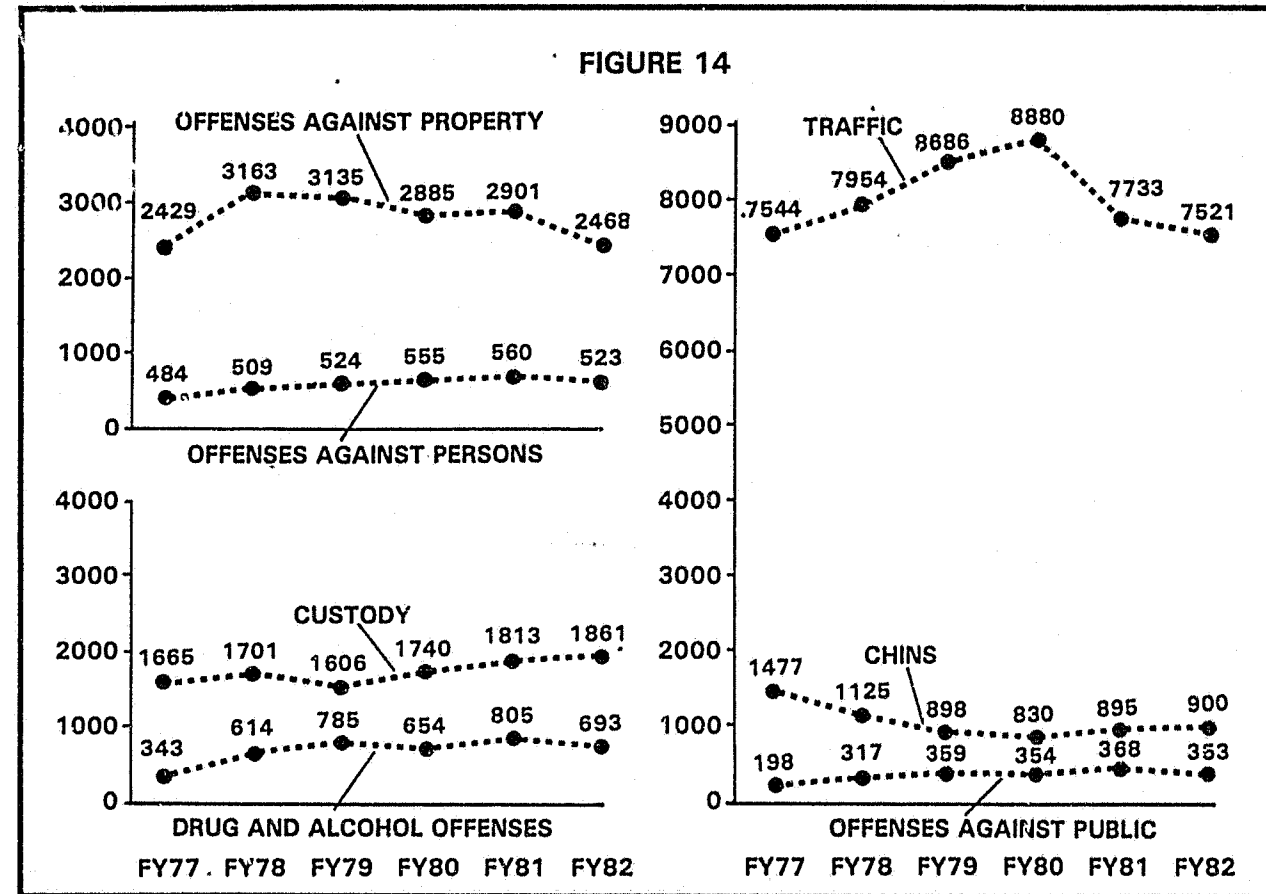
The next chart shows the changing distribution of juvenile complaints, excluding traffic complaints, by race and sex since FY 1977:

**FIGURE 13
JUVENILE NON-TRAFFIC COMPLAINT* RACE
AND SEX DISTRIBUTION TREND
FY 1977 - FY 1981**

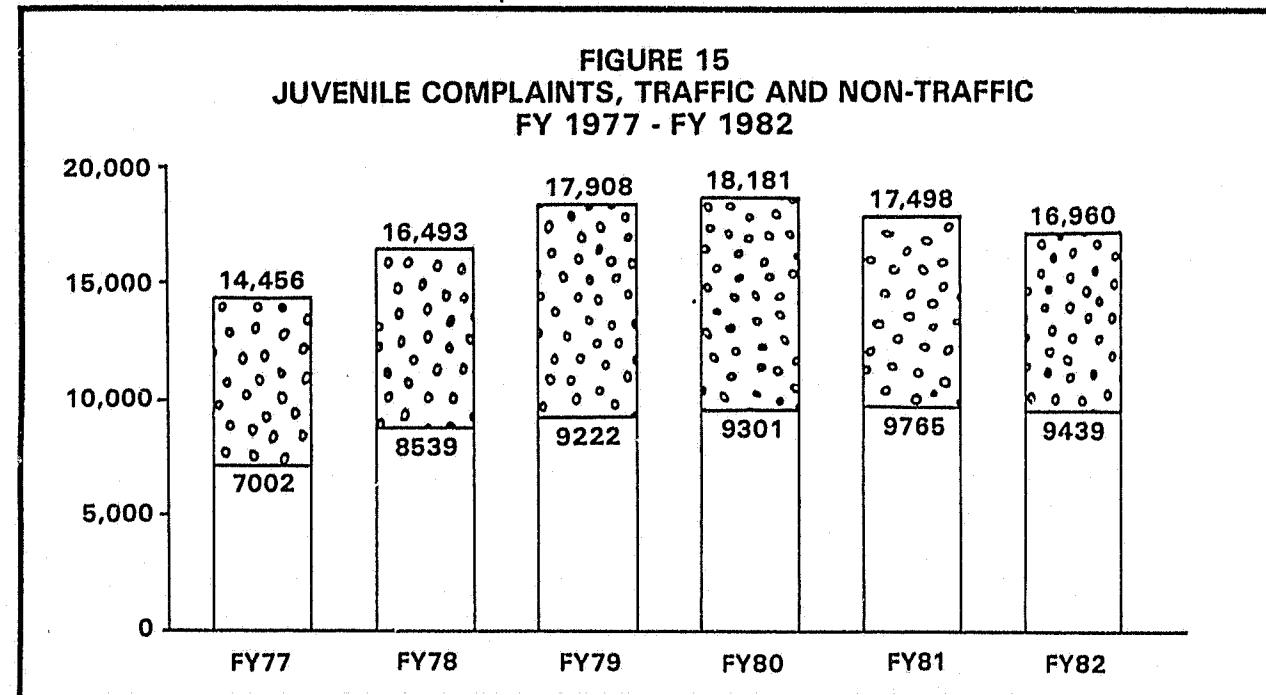
	FY 1977	FY 1978	FY 1979	FY 1980	FY 1981	FY 1982
White Male	58.8%	57.8%	60.5%	58.3%	58.2%	54.7%
White Female	28.8	26.9	23.8	23.6	26.4	27.6
Non-White Male	8.8	11.6	11.0	13.4	11.1	12.3
Non-White Female	3.6	3.6	4.7	4.7	4.3	5.5
TOTAL	100%	100%	100%	100%	100%	100%
n	7,002	8,013	7,781	7,559	7,965	7,450

*Excluding rules, capiases, reviews, attorney appointments, pre-trial motions, record inspection requests, seeing intake counselors for information, and leaving without seeing intake counselor.

The following charts graph the changes in the categories of juvenile complaints since FY 1977:



The increase in all categories of juvenile complaints combined is graphed below:



The following tables display the changing distribution of juvenile complaints by offense type since FY 1977.

The first chart refers to all juvenile complaints, including traffic complaints; the next chart refers to juvenile complaints excluding traffic complaints.

FIGURE 16
PERCENTAGE DISTRIBUTION OF TYPES OF JUVENILE COMPLAINTS* RECEIVED 1977 - FY 1982, INCLUDING TRAFFIC CASES

	FY 1977 N = 14546	FY 1978 N = 15967	FY 1979 N = 16467	FY 1980 N = 16439	FY 1981 N = 15698	FY 1982 N = 14971
Offenses Against Property	16.7	19.8	19.0	17.5	18.5	16.5
Offenses Against Persons	3.3	3.2	3.2	3.4	3.6	3.5
Offenses Against Public	1.4	2.0	2.2	2.2	2.3	2.4
Drug and Alcohol Offenses	2.3	3.8	4.8	4.0	5.1	4.6
CHINS Offenses	10.3	7.0	5.5	5.0	5.7	6.0
Custody and Neglect	11.4	10.7	9.8	10.6	11.5	12.4
Traffic	51.9	49.8	52.7	54.0	49.3	50.2
Other	2.7	3.7	2.9	3.3	4.0	4.4
TOTAL	100%	100%	100%	100%	100%	100%

* Excluding capiases, reviews, attorney appointments, pre-trial motions, record inspection requests, seeing intake counselors for information and leaving without seeing an intake counselor.

FIGURE 17
PERCENTAGE DISTRIBUTION OF TYPES OF JUVENILE COMPLAINTS* RECEIVED 1977 - FY 1982, EXCLUDING TRAFFIC CASES

	FY 1977 N = 7002	FY 1978 N = 8013	FY 1979 N = 7781	FY 1980 N = 7559	FY 1981 N = 7695	FY 1982 N = 7450
Offenses Against Property	34.7	39.5	40.3	38.2	36.4	33.1
Offenses Against Persons	6.9	6.4	6.7	7.3	7.0	7.0
Offenses Against Public	2.8	4.0	4.6	4.7	4.6	4.7
Drug and Alcohol Offenses	4.9	7.7	10.1	8.7	10.1	9.3
CHINS Offenses	21.4	14.0	11.5	11.0	11.2	12.1
Custody and Neglect	23.7	21.2	20.6	23.0	22.8	25.0
Other	5.6	7.3	6.1	7.2	7.8	8.8
TOTAL	100%	100%	100%	100%	100%	100%

* Excluding rules, capiases, reviews, attorney appointments, pre-trial motions, record inspection requests, seeing intake counselors for information, and leaving without seeing an intake counselor.

When the police witness or are called to the scene of an offense alleged to have been committed by a juvenile, the police officer verifies that an offense has occurred and completes an investigative report. If the suspected violator has been apprehended during court hours, the

police officer may bring the juvenile to the Intake Section at either the Courthouse or the McLean or Mount Vernon branch offices. If the police do not wish to detain the juvenile, they may send the child home and come to intake at any time to file a petition. A parent or other adult bringing a complaint against a juvenile also files the complaint at one of the offices.

After a complaint has been filed with an intake clerk, each complainant is interviewed by an intake counselor. Intake reviews cases to determine whether this court has jurisdiction and whether the charge meets Code requirements for the offense. According to the revised Code, Intake may not refuse petitions which allege:

- (a) controversy over a child's custody, visitation, or support;
- (b) a violation of the support laws;
- (c) the right of either a child or his parents to treatment or services required by law;
- (d) the commission of an offense which, if committed by an adult, would be a felony or Class 1 misdemeanor.

However, according to the law, Intake does have the discretion to refuse other complaints. Complainants whose petitions have been refused may appeal to a magistrate, who may issue a warrant for the child if he finds probable cause for the commission of a felony or Class 1 misdemeanor.

In FY 1982, court staff performed 8,936 intakes on juvenile non-traffic complaints. Some intakes involve more than one complaint: in FY 1982, there was an average of 1.06 intakes per juvenile non-traffic complaint, compared to averages of 1.05 in FY 1980 and 1.07 in FY 1981. In FY 1982, Intake set for court 64.0% of all juvenile non-traffic complaints received. An additional 7.0% of those complaints were set for an informal hearing with the Court's Hearing Officer.

The following chart shows percentages of complaints set for court by Intake, by offense type, for FY 1979 through FY 1982:

**FIGURE 18
INTAKE DISPOSITIONS
BY TYPE OF JUVENILE NON-TRAFFIC OFFENSE*
FY 1979 - FY 1982**

Offense Type	FY 1979		FY 1980		FY 1981		FY 1982	
	No. of Complaints	Percent Set For Court	No. of Complaints	Percent Set For Court	No. of Complaints	Percent Set For Court	No. of Complaints	Percent Set For Court
Offense Against Property	3135	71.2	2885	68.4	2901	72.3	2468	74.1
Offenses Against Persons	524	76.9	555	74.4	560	76.3	523	70.2
Offenses Against the Public and Morality	359	71.6	354	66.4	368	60.9	353	62.3
Drug and Liquor	785	63.4	654	61.8	805	48.6	693	52.1
CHINS	898	43.9	830	44.9	895	42.5	900	44.7
Custody	1606	58.2	1740	53.9	1813	51.6	1861	57.7
TOTAL	7307	64.6	7018	61.8	7342	60.7	6798	62.6

*Excluding rules, capiases, and others.

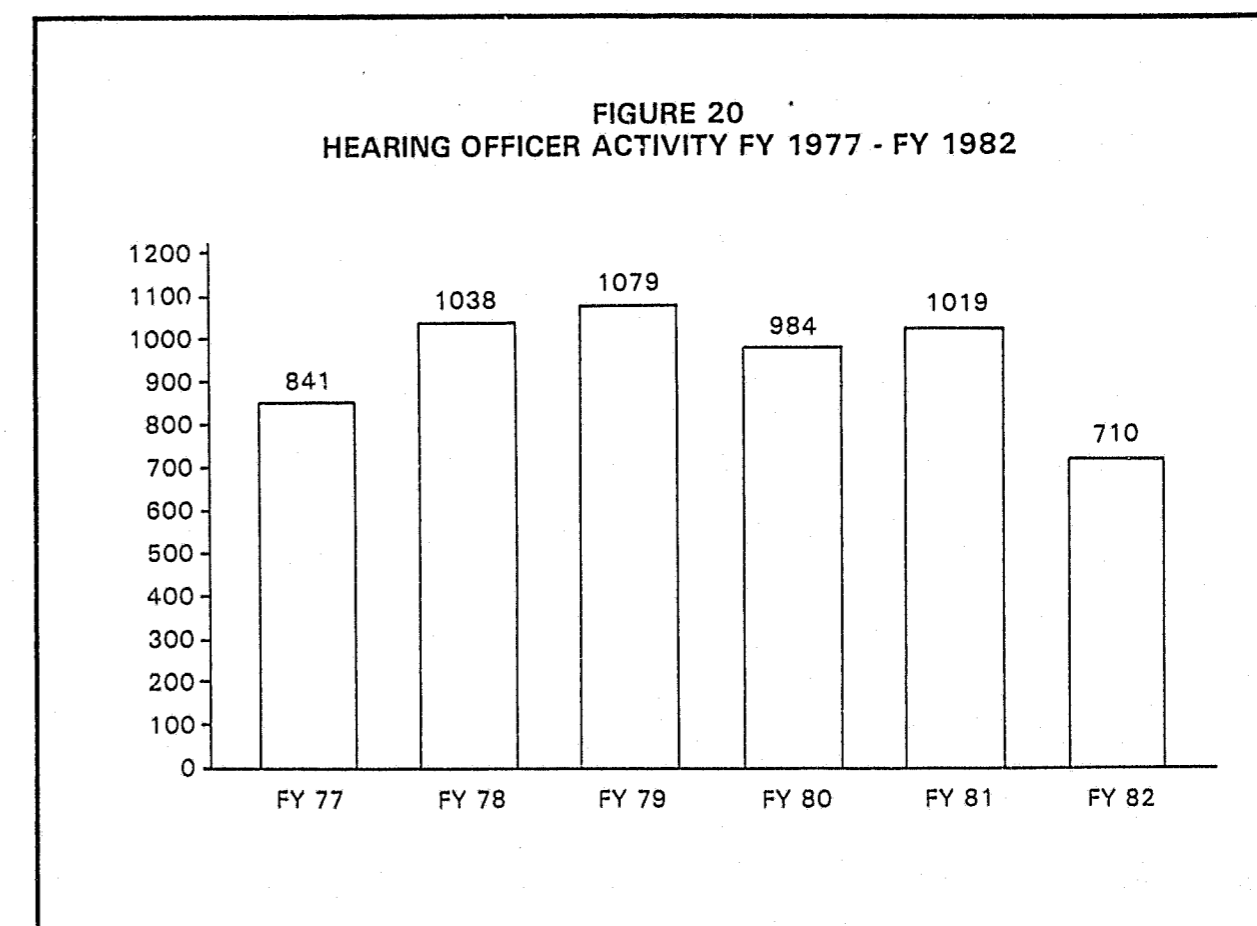
INFORMAL HEARING OFFICER

The Hearing Officer program was begun in 1970 to hear minor cases which may be resolved by informal arbitration and sanctions. The Hearing Officer is used most frequently in trespassing, minor property, and drug cases. The Hearing Officer states the nature of the hearing to the juvenile, the parents and/or complainants, and discusses the situation with all involved. Depending on the problem and the nature of the responses, the Hearing Officer decides on the course of action. Most often an essay is assigned or the case is continued for a period of time and closed if the juvenile commits no further offenses. A petition may be filed for informal processing if new offenses are committed.

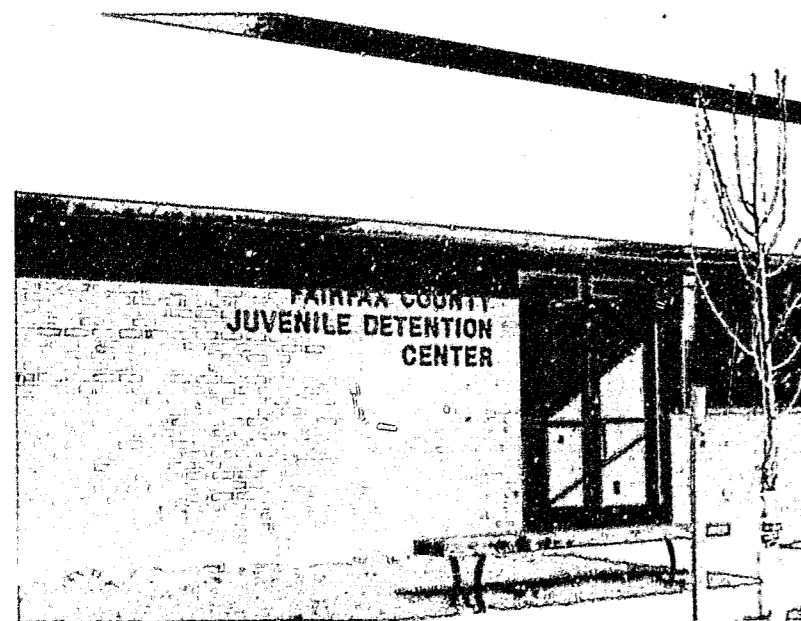
The Hearing Officer activity since FY 1977 can be seen below:

**FIGURE 19
HEARING OFFICER ACTIVITY FY 1977 - FY 1982**

FISCAL YEAR	NUMBER OF HEARINGS	FISCAL YEAR	NUMBER OF HEARINGS
1977	841	1980	984
1978	1,038	1981	1,019
1979	1,079	1982	710



DETENTION



In more serious cases which are not informally diverted, the intake counselor must decide whether a child should be detained or placed outside of his/her home prior to a court hearing or whether he/she can be released to parents or a guardian. If holding is necessary, the available options pending detention hearings are placement in a foster home, placement in a pre-dispositional group home, placement in the Less-Secure Shelter for CHINS offenders, placement in the Northern Virginia Detention Home, or placement in the Adult Detention Center for juveniles over 15 charged with other than CHINS offenses.

The following tables show numbers of juvenile confinements in the juvenile detention home and the Adult Detention Center in FY 1982, as well as confinement trends since 1977.

**FIGURE 21
JUVENILES DETAINED BY PLACE, RACE, AND SEX — 1982**

Race and Sex	Juvenile Detention Home			Adult Detention Center			Less-Secure Shelter		
	No.	Number of Days	Average Length of Stay	No.	Number of Days	Average Length of Stay	No.	Number of Days	Average Length of Stay
White Male	297	4173	14.1	175	2094	12.0	53	1823	34.4
White Female	207	2842	13.7	3	5	1.7	85	1410	16.6
Non-White Male	90	1874	20.8	59	1440	24.4	7	55	7.9
Non-White Female	27	365	13.5	1	1	1.0	10	327	32.7
TOTAL	621	9254	14.9	238	3540	14.9	155	3615	23.3

The decision by Intake to hold a child outside of his/her home is made because the child may present a danger to the community or to himself, and the judge may decide to detain if he determines that the child is unlikely to appear for the court hearing. In all cases in which a child is placed outside his/her home pending hearing, a judicial determination to continue detention must be made by a judge the next working day after a child is first detained to ensure that

continued detention is appropriate. The Code prohibits the detention of CHINS offenders in secure facilities beyond the time of the detention hearing, and the detention of abused and neglected children is prohibited in secure facilities at all.

At times when Intake is not open, special magistrates may authorize detention of a juvenile through issuance of a warrant.

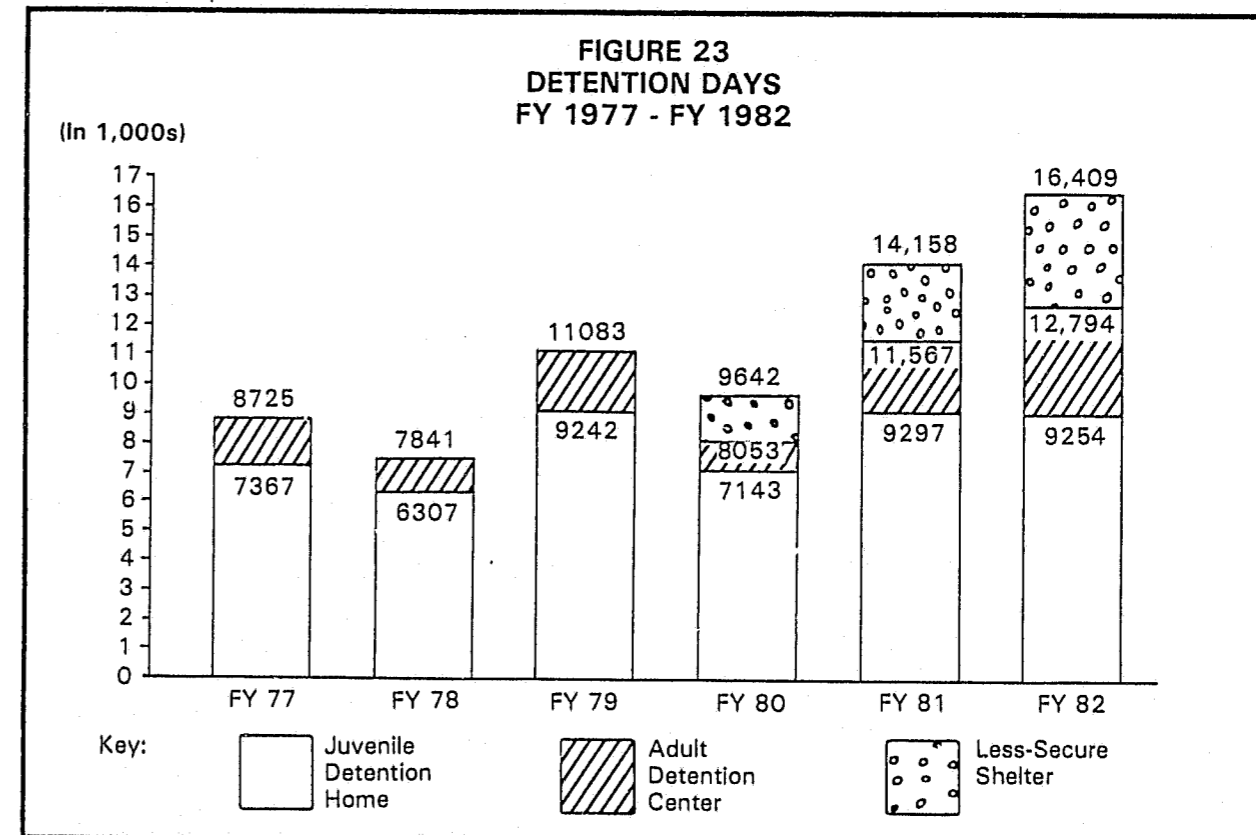
**FIGURE 22
SECURE CONFINEMENT TRENDS—FY 1977 - FY 1982**

Fiscal Year	Juvenile Detention Home			Adult Detention Center (ADC)			Total held In Secure Confinement	Percent of Total Held in ADC
	No.	Days	Average Length of Stay	No.	Days	Average Length of Stay		
1977	672	7,367	11.0	126	1,358	10.8	798	15.8
1978*	486	6,307	13.0	124	1,534	12.4	610	20.3
1979	549	9,242	16.8	150	1,841	12.3	699	21.5
1980	532	7,143	13.4	158	1,589	10.1	690	22.9
1981	553	9,297	16.8	196	2,270	11.6	749	26.2
1982	621	9,254	14.9	238	3,540	14.9	859	27.7

*The Juvenile Detention Home operated with diminished capacity due to repairs, from August-October 1977.

The tables above report numbers of confinements, which exceed the number of juveniles confined since a single juvenile may be confined more than once in the same year. In FY 1982, 463 different juveniles were confined to the juvenile detention home, and 218 juveniles held in the Adult Detention Center. A total of 595 different juveniles were held in either juvenile or adult detention, with some of these juveniles held in both. During the previous fiscal year, a total of 524 different juveniles were held in either juvenile or adult detention; 463 were confined to the juvenile detention home, and 181 to the adult detention center.

**FIGURE 23
DETENTION DAYS
FY 1977 - FY 1982**



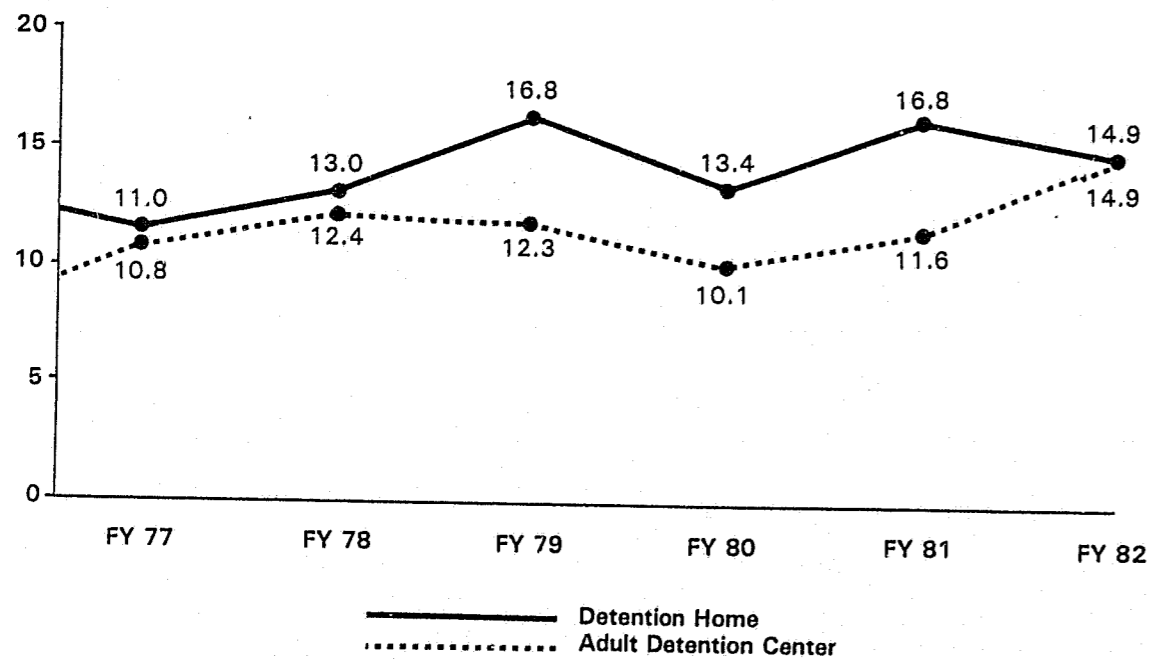
**FIGURE 24
JUVENILE DETENTION HOME
AVERAGE LENGTH OF STAY BY AGE**

Age	FY 1977	FY 1978	FY 1979	FY 1980	FY 1981	FY 1982
9	1.0	1.0	0	1.0	0	0
10	0	0	0	0	1.0	1.0
11	20.2	0	0	13.2	8.3	4.2
12	9.4	5.6	20.5	21.1	14.6	9.0
13	9.7	12.5	14.5	14.1	34.3	11.9
14	10.9	12.4	13.1	13.4	21.2	17.2
15	12.8	13.1	6.5	14.6	13.1	16.8
16	8.9	14.0	16.0	14.0	16.6	14.2
17+	11.0	11.0	19.0	10.3	14.0	13.4

**FIGURE 25
ADULT DETENTION CENTER
AVERAGE LENGTH OF STAY BY AGE**

Age	FY 1977	FY 1978	FY 1979	FY 1980	FY 1981	FY 1982
13	0	0	0	0	0	0
14	0	2.0	0	1.7	0	1.0
15	3.3	4.8	9.5	8.8	13.3	7.0
16	9.2	10.8	8.8	7.8	9.8	12.2
17+	12.2	15.5	12.5	11.8	12.0	17.6

**FIGURE 26
AVERAGE LENGTH OF STAY
FOR JUVENILES DETAINED**



ADJUDICATION



If a child is confined in the juvenile detention home, Less-Secure Shelter or Adult Detention Center, his/her hearing is scheduled within 10 days of the detention hearing. Otherwise, the adjudicatory hearing is generally set by Intake for 3-4 weeks following the filing of the complaint.

The following table reports the number of commitments to the State Department of Corrections since FY 1977:

**FIGURE 27
COMMITMENTS TO STATE DEPARTMENT OF
CORRECTIONS FROM FAIRFAX COUNTY, FY 1977-FY 1982**

Fiscal Year	Number of Commitments
1977	48
1978	60
1979	59
1980	44
1981	68
1982	56

If the offense is one for which a child may lose his/her freedom, an attorney is provided by the Court or the juvenile is required to retain one, depending on the family's financial situation. At the hearing the juvenile is informed by the judge of the alleged offense and is asked for a plea of innocent or guilty. The complainant explains the circumstances which led to the filing of the petition, the accused juvenile may respond to the charges, and any other witnesses are called. The judge then makes his decision for disposition of the case. Options available to him at this point include:

- commitment to the State Department of Corrections
- placement in a Court Youth Service Home
- commitment of the child to another agency for placement

- awarding custody of the child to the Court for special placement in a certified residential institution
- placement of the child under court supervision
- continuance for a social investigation to be conducted by a probation counselor to bring recommendations on appropriate dispositions to the judge at a later date
- fine and costs or restitution
- continuation of the case to be dismissed at a future date if there are no further offenses
- dismissal of the charge

Some cases receive adjudication and disposition in a single court hearing, while other cases require several hearings. The increase in juvenile and adult cases docketed since 1977 is shown below:

**FIGURE 28
DOCKETED COURT TRANSACTIONS* FY 1977 - FY 1982**

Fiscal Year	Court Days	Non-Traffic Transactions	Daily Average	Traffic Transactions	Daily Average	Total Transactions	Daily Average
1977	249	13,767	55.3	9,501	38.2	23,268	93.4
1978	251	13,175	52.5	10,441	41.6	23,616	94.1
1979	245	16,159	66.0	9,976	40.7	26,135	106.7
1980	245	15,355	62.7	10,020	40.9	25,375	103.6
1981	238	17,105	71.9	10,210	42.9	27,315	114.8
1982	239	17,429	72.9	11,247	47.1	28,676	120.0

*The State Supreme Court Uniform Docketing System was begun in 1976 and hearings began to be counted uniformly throughout Virginia. Each complaint heard is counted as one hearing. Therefore, if five complaints are heard at one time, the Uniform Docketing System counts them as five hearings.

SUPERVISION



If a juvenile is placed under court supervision, he/she is assigned a probation counselor in his/her area of the county. Rules for probation are typed, signed by the judge, and given to the juvenile to clarify specific requirements such as curfew. The following tables show the race, sex, and ages by court center of juveniles under different types of supervision during FY 1982.

**FIGURE 29
AGE AND SEX OF JUVENILES UNDER
SUPERVISION DURING FY 1982
(By Court Units)**

MALES									FEMALES								
Age	Central	North	South	Special Services	Domestic Relations	Total No.	Percent		Age	Central	North	South	Special Services	Domestic Relations	Total No.	Percent	
Under 13	14	23	20	2	161	220	12.1		Under 13	0	3	1	0	154	158	20.2	
13	10	15	26	2	8	61	3.4		13	3	6	5	0	8	22	2.8	
14	46	61	67	12	4	190	10.5		14	24	19	21	3	7	74	9.5	
15	110	86	96	21	4	317	17.5		15	61	57	45	7	3	173	22.2	
16	141	100	108	42	2	393	21.7		16	71	49	43	9	6	178	22.8	
17	141	103	112	66	1	423	23.4		17	47	40	19	10	4	120	15.4	
Over 17	49	51	51	36	20	207	11.4		Over 17	11	12	13	12	8	56	7.2	
Sub Total	511	439	480	181	200	1811	100.0			217	186	147	41	190	781	100.0	

SPECIAL PROGRAMS

**FIGURE 30
RACE AND SEX OF JUVENILES
UNDER SUPERVISION DURING FY 1982
(By Court Units)**

	CENTRAL		NORTH		SOUTH		SPECIAL SERVICES		DOMESTIC RELATIONS		TOTAL	
	No.	%	No.	%	No.	%	No.	%	No.	%	No.	%
White Male	448	61	322	51	368	59	125	56	176	45	1439	56
White Female	190	26	161	26	132	21	33	15	158	41	674	26
Non-White Male	63	9	117	19	112	18	56	25	24	6	372	14
Non-White Female	27	4	25	4	15	2	8	4	32	8	107	4
TOTAL	728	100	625	100	627	100	222	100	390	100	2592	100

**FIGURE 31
STATUS DISTRIBUTION
JUVENILE CASES DURING FY 1982
(By Court Units)**

	CENTRAL	NORTH	SOUTH	SPECIAL SERVICES	DOMESTIC RELATIONS	TOTAL
Parole		1		99		100
Committed Offender				112		112
Custody Investigation					307	307
Counseling		5	1			6
Courtesy Investigation	1	1	4	2		8
Courtesy Supervision	7	23	26	9		65
Investigation	308	253	285		4	850
Probation	404	339	290		22	1055
Unofficial Counseling	7	2	18		2	29
Unsupervised Probation	1	1	3			5
Visitation Investigation					55	55
TOTAL	728	625	627	222	390	2592

Some juveniles come under several different types of supervision during the same year. For example, first they have a social investigation, then are put on probation, and then may be on parole. The number of supervisions reported above, therefore, exceeds the number of different juveniles under some form of supervision. The total number of juveniles under supervision was 1,851 in FY 1982, compared to 1,783 in FY 1981 and 1,778 in FY 1980.

The effective reduction of future offenses by juveniles brought to its attention is of critical importance to the Court. Consequently, many specialized services have been developed to enhance court intervention. In FY 1982 these included diagnostic services; work, education, and family counseling programs; coordination of volunteer activity and of direct court placement; and residential facilities. The number of participants in each of these programs is shown after the description below:

- 1. DIAGNOSTIC SERVICES** - Judges may order psychiatric or psychological evaluations, usually as part of social investigations, for juveniles within the purview of the Court. Probation officers also may request such evaluations during the course of social investigations to aid in the formulation of treatment plans. Although private doctors and psychologists perform some of these evaluations, most are performed by one staff psychologist from the Woodburn Mental Health Center who is assigned full-time to the Court and several interns under her supervision. The Court has used psychological support services since the fall of 1970.

THE DIAGNOSTIC TEAM, coordinated by a probation counselor assigned to the Special Services Unit, is an interagency group whose membership includes a psychologist assigned to the Court, a family counselor from the court staff, and according to the particular case under consideration, representatives from the Health Department, the Department of Social Services (DSS), the School Board, Vocational Rehabilitation, and other agencies. The group conferences especially difficult cases referred by judges or probation counselors, and reports its recommendations to the judges. DSS counselors occasionally refer cases of court-involved juveniles. Most juveniles whose cases come before the team have failed to respond to prior treatment efforts. The team considers a range of specialized diagnostic evaluations about each juvenile it sees, and facilitates collaboration among the different agencies whose cooperation is required to implement recommended treatment plans. Special emphasis is placed on checking whether community resources have been exhausted before recommending the removal of any juvenile from the community. The team has operated since the spring of 1974.

- 2. WORK PROGRAMS** - The **WORK TRAINING PROGRAM** is targeted specifically at juveniles on probation, 14 to 18 years of age, who have committed at least two adjudicated offenses. The Work Training Counselor places trainees in agencies of the county government and non-profit agencies, maintaining periodic contact with the on-site work supervisors and counseling trainees about job-related problems. Trainees usually work from 15 to 40 hours a week, depending upon their school schedules and the needs of the employing agencies, for periods of up to six months. They are paid strictly for hours worked; the Court handles all payroll administration. Although a judge can order a juvenile to get a job, no one can be ordered to participate in this program and no punitive court action occurs solely as a result of a youngster's failure in the program. Trainees are treated on the job as regular employees; employers are free to fire them without advance approval from the Court. The program began in November 1973.

The **COMMUNITY SERVICES PROJECT** assigns youngsters to work without pay in an agency of the county government or a non-profit agency. Young people are referred to the program by judges or probation counselors. Those who choose to participate are subject to a show cause order (for contempt of court) if they fail to complete their hours. The program began in the spring of 1972. An amendment to the Virginia Code in FY 1980 authorizes juvenile court judges to order delinquents to participate in public service projects.

3. **EDUCATION PROGRAMS** - The Court and the School Board collaborate in operating or supporting a variety of alternative schools for youngsters who are unable to benefit from the ordinary public school experience.

Three of these schools:

- the **FALLS BRIDGE SCHOOL** in Tyson's Corner
- the **SAGER AVENUE SCHOOL** in Fairfax City
- the **SOUTH COUNTY ALTERNATIVE SCHOOL** in the Richmond Highway Area

were created by joint action of the Court and the School Division. The Court provides facilities and administrative support, while the School Division provides a full-time teacher and books and supplies for each school. Each school has capacity for six students under probation supervision by the Court who have experienced behavior and/or attendance problems in school. Students are referred by their probation counselors who closely monitor their attendance in the alternative schools. Students receive individualized remedial instruction, designed to enable them within a year to either return to a regular school, obtain a high school equivalency diploma, or enroll in a vocational or work-study program. Sager Avenue School opened in the fall of 1974, Falls Bridge School in September of 1977, and South County Alternative School in November of 1977.

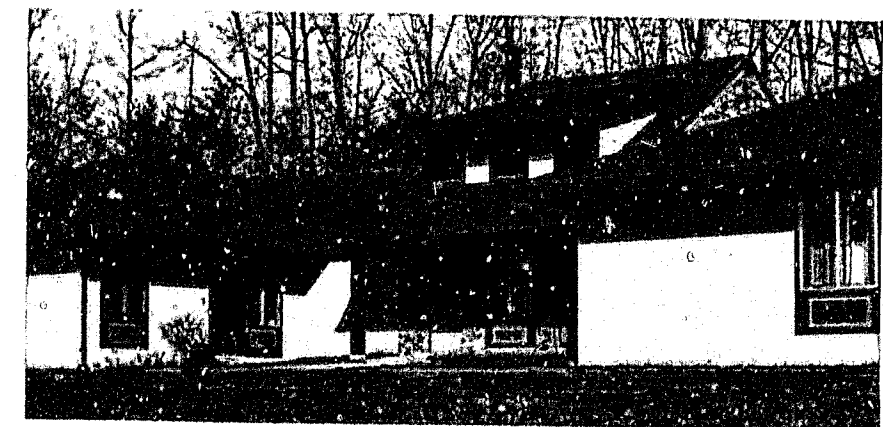
The **ENTERPRISE LEARNING CENTER** located in McLean is a private, non-profit school which provides a therapeutic learning environment for up to 30 juveniles of average and above-average intelligence whose emotional and behavioral problems have prevented them from coping with regular school settings. In FY 1982, nearly one-half of the students enrolled have been under court supervision. In addition to individual and small-group instruction, students receive group counseling, and parents are required to participate in counseling. The School Division provides one full-time and one half-time teacher, while the court provides money to pay a portion of rent and the salaries of the director, a third teacher, a counselor, and a secretary. Enterprise opened in the summer of 1974.

DIFFERENT DRUM, in Mt. Vernon, is another non-profit private school. The Court contracts for 5 of the 25 student spaces. Different Drum provides an integrated program of remedial education, counseling, vocational preparation, and recreation to its students. Different Drum is staffed by a director and assistant director, an education specialist, an education coordinator, three teacher-counselors and two aides. Like Enterprise, it accepts referrals from probation counselors and the Department of Social Services. It also accepts referrals from the Fairfax County Public Schools and from other jurisdictions. Different Drum opened in 1974; the Court has contracted for spaces there since October 1976.

The **VOLUNTEER LEARNING PROGRAM** is an individualized tutoring program available to all residents of the county. In addition to the School Division, which provides one full-time coordinator and one part-time assistant, and the Court, which provides office space, the program is also sponsored by the Public Libraries, which provide space for the tutoring and training activity. The program coordinator recruits, trains, and supervises volunteers who serve as tutors for persons needing remedial assistance. The coordinator and her assistant also diagnose individual educational needs and match appropriate tutors to learners or make referrals to Adult Learning Centers. Tutors and learners meet one-on-one twice weekly, usually in a library, to work towards a selected academic goal such as a high school equivalency certificate, return to high school, or attainment of some basic skill. Tutors are also assigned to the learning centers. Nearly one-third of the learners are court-referred. Other referrals come from the public schools, other agencies, and other program participants. The program started in the fall of 1975.

The **SCHOOL PROBATION OFFICER PROGRAM** is the final program jointly sponsored by the Court and the School Division. Teachers in selected intermediate and high schools are designated as probation counselors. They attempt to handle student problems through counseling and referral either before or after the students become involved with the Court. The Court and the School Division share payment of the supplemental salary increments that the school probation officers receive. The program started in the fall of 1973.

4. The **FAMILY COUNSELING PROGRAM** - The Family Systems Program, developed in 1970, provides ongoing family counseling services to families involved with the Court. Referrals to the program are made by court personnel, including judges. Services are provided to families who have been diverted from Intake, who have children on probation supervision, and who are experiencing custody/visitation disputes or marital difficulties. The program seeks to assist family members in understanding how each influences one another's behavior and to assist each family member in making more thoughtful and responsible decisions. In addition to providing counseling services the program also prepares evaluations for the Court's diagnostic team, and offers training and consultation to other court staff.
5. The **VOLUNTEER PROGRAM** - Volunteers participate in the delivery of court services as probation and parole aides, court aides, restitution aides, program aides, administrative aides, aides at residential facilities, and as support persons for youngsters under court supervision who are in need of a positive adult model. The program is coordinated by a single professional, who recruits and screens volunteers, orients them to the court system, and places them with the staff members they will assist. The Volunteer Coordinator also helps recruit and orient people to serve as emergency foster home parents. The coordinator acts as a liaison between the Court and local colleges, community organizations, the Voluntary Action Center, and concerned citizens. In FY 1982 volunteers contributed the equivalent of nearly 10 full-time person-years of service.
6. **SPECIAL PLACEMENTS** - Section 16.1-286 of the Code of Virginia provides for the state to reimburse local jurisdictions for those costs of placements in certified residential institutions which exceed parents' abilities to pay. Since April 1980, a placement coordinator has facilitated the direct placement of all youngsters in the custody of the Court pursuant to this Code section, and has monitored their cases during the course of their stays. The coordinator serves as a liaison with the State Department of Corrections, Reception and Diagnostic Center, Direct Placement Unit; with the various residential institutions; and with probation staff



7. **RESIDENTIAL SERVICES**
GIRLS' PROBATION HOUSE; BOYS' PROBATION HOUSE - These are a pair of community-based residential facilities, each with capacity for 12 children from 13 to 17 years of age, who have been placed there by judicial disposition. Neither House accepts children with severe emotional problems or heavy involvement with drugs. Residents have failed to respond to previous treatment efforts, and some have been placed at the Houses under suspended commitment to the State Department of Corrections. Each House provides a structured environment which emphasizes the acceptance of personal responsibility by residents through means of intensive staff supervision, a level program of behavior modification, role modeling, positive peer culture and individual, group, and family counseling. Each House is staffed by a director, assistant director, six counselors, a clerical specialist, and a cook. In addition, the Fairfax County Public Schools provide each House with a special education teacher and a teacher's aide, who conduct classes daily in each facility.

GROUP HOMES - Other community-based residential facilities operated by the Court include two pre-dispositional and two post-dispositional group homes, administered by a Group Home Coordinator. Each group home is staffed by full-time houseparents who own or rent the house and who receive, in addition to a fixed salary, a pro-rated share of rent and utilities costs and per-diem allowances according to the number of child-care days they provide. The natural parents of the children placed in these homes are required to contribute according to their abilities toward the costs of their children's support.

The *pre-dispositional* group homes have budgeted capacity for 8 boys and girls, placed there by judicial order while awaiting court disposition or longer term placement, who require out-of-home placement but do not need secure detention. They are each expected to stay no longer than eight weeks. Due to turnover among houseparents and difficulty in finding new houseparents despite an active recruitment drive, no more than one pre-dispositional home was ever open at a time in FY 82, and for six months none were available at all.

The two *post-dispositional* group homes each have capacity for four boys or girls who are under supervision of the Court's probation staff and whose temporary custody has been transferred by judicial order to the group houseparents. These group homes each provide a stable home-like atmosphere for children who are free of severe emotional, cognitive, drug or alcohol problems. These children are expected to stay from four to nine months while they, their natural parents, probation counselors, and court family counselors work toward returning the children to their natural homes if possible, or arranging other suitable long-term placements. The children attend school or are employed while residing at the home; their parents may be referred to the Court's family counseling program. The first group house operated by salaried houseparents opened in the summer of 1975; the Court had used volunteer group homes since 1971.

VOLUNTEER EMERGENCY FOSTER CARE PROGRAM - This is one of twenty such programs throughout the state sponsored by the Virginia Council of Churches and sanctioned by the Virginia Departments of Corrections and Welfare, to recruit volunteer foster parents through local churches. Foster parents are approved, trained, and supervised by the Court's Group Home Coordinator. They receive no stipends for their services. The program accepts CHINS and minor delinquents who are able to function in a foster family environment. All placements are ordered by judges, upon recommendation of the Group Home Coordinator, for a maximum stay of twenty-one days. The program in Fairfax started on April 1, 1982, replacing the Emergency Shelter Care Program which was discontinued by the Virginia Department of Corrections in November 1981 due to the withdrawal of federal Title XX funds. The Court has used emergency foster homes since 1971.

OUTREACH DETENTION - In January of 1978, a federal grant made it possible to begin operation of the Outreach Detention Program as another alternative to the detention of juveniles awaiting court disposition. Five outreach counselors with small caseloads provide intensive supervision to juveniles assigned to the program by judges, who otherwise might have found it necessary to detain the juveniles.

LESS-SECURE SHELTER - This is a non-secure pre-dispositional holding facility for up to 9 boys and girls, placed there by judicial order. Most of the children held there are CHINS, who under the Code of Virginia cannot be detained beyond the next court day in the same secure facility as delinquent offenders. The program opened on January 28, 1980, funded by a Juvenile Justice and Delinquency Prevention (JJDP) federal grant. In April 1982 it moved into a separate wing of the new Juvenile Detention Center, where its capacity will eventually expand to 12.

It is staffed by a director, two senior counselors, four full-time and one part-time counselors, a half-time clerk-typist, a cook, and a teacher from the Fairfax County Public Schools.

The following charts provide activity indicators for the Court's special programs and residential facilities, as well as efficiency indicators for the residential facilities.

**FIGURE 32
CASELOADS OF PROGRAMS AND RESIDENTIAL FACILITIES - FY 1978 - FY 1982**

Programs	Number of Cases ¹ FY 1978	Number of Cases ¹ FY 1979	Number of Cases ¹ FY 1980	Number of Cases ¹ FY 1981	Number of Cases ¹ FY 1982
Psychological Evaluations (Court Psychologists)	243	277	270	344	314
Diagnostic Team	73	82	66	74	56
Work Training Program	265	221	276	225	255
Community Service Project	185	213	253	413	557
Falls-Bridge School	13	7	10	8	9
Sager Avenue School	11	14	12	10	20
South County Alternative School	22	13	17	12	13
Enterprise Learning Center ²	48	34	34	26	30
Different Drum ³	10	7	9	6	8
Volunteer Learning Program ²	199	195	219	246	243
Family Counseling Program ⁴	274	233	237	241	228
Court Placement Program			42 ⁵	58 ⁵	104
Placements					
Boys' Probation House					9 ⁵
Girls' Probation House	22	28	39	35	30
Pre-dispositional Group Homes	52	56	34	22	13
Post-dispositional Group Homes	21	14	16	19	24
Volunteer Emergency Foster Care					6 ⁵
Outreach Detention	144 ⁵	367	314	303	347
Less-Secure Shelter			70 ⁵	146	164

¹The "number of cases" refers to all cases active on July 1, plus all new cases during the fiscal year.

²Includes court-referred and non-court-referred learners.

³This is the number of youths placed directly by the Court at Different Drum.

⁴Includes only counseling cases, not diagnostic evaluations.

⁵Program or placement in operation only part of year.

**FIGURE 33
VOLUNTEER SERVICES - FY 1980 - FY 1982**

Court Volunteer Program	FY 1980	FY 1981	FY 1982
No. of volunteers	25	106	118
No. of volunteer-hours	4,800	13,073	17,600
Volunteer Learning Program			
No. of volunteer tutors	134	125	122
No. of volunteer-hours	3,991	4,076	3,574

**FIGURE 34
UTILIZATION AND COSTS OF RESIDENTIAL FACILITIES - FY 1982**

Facilities	Average Length of Stay for Those Released	Utilization Rate ¹	Cost per Child-Care Day
Girls Probation House	155.7	69.6%	\$64.99
Pre-dispositional Group Homes	34.9	11.8%	32.18
Post-dispositional Group Homes	151.2	79.5%	22.80
Volunteer Emergency Foster Homes ²	14.0	N/A	N/A
Outreach Detention	37.8	109.1%	8.54
Less-Secure Shelter	23.3	98.8%	67.29

¹Based on budgeted (not actual) capacity.

²Opened in April 1982.

IV. ADULT CASE PROCESSING

ADULT CRIMINAL CASE PROCESSING

Crimes committed between members of a family and crimes committed by an adult against a juvenile are under the jurisdiction of the Juvenile and Domestic Relations District Court. These offenses are brought to the attention of the court either by a police officer witnessing an offense or learning of it as a result of an investigation or by a citizen or member of the family acting as complainant.

If a police officer determines that a crime has been committed between members of a family or by an adult against a juvenile, the adult offender is arrested and brought before the special magistrate. If a member of the family or citizen is acting as complainant, the victim must go before the special magistrate and swear that the person has committed an offense. A warrant is then prepared and the alleged offender may be arrested.

Adult misdemeanor charges under the Juvenile and Domestic Relations District Court's jurisdiction are heard in their entirety in the Juvenile and Domestic Relations District Court. Preliminary hearings are conducted for adult felonies and if the charge is reduced, the entire case is heard. If the charge is not reduced and the preliminary hearing reveals probable cause, the case is referred to the Grand Jury.

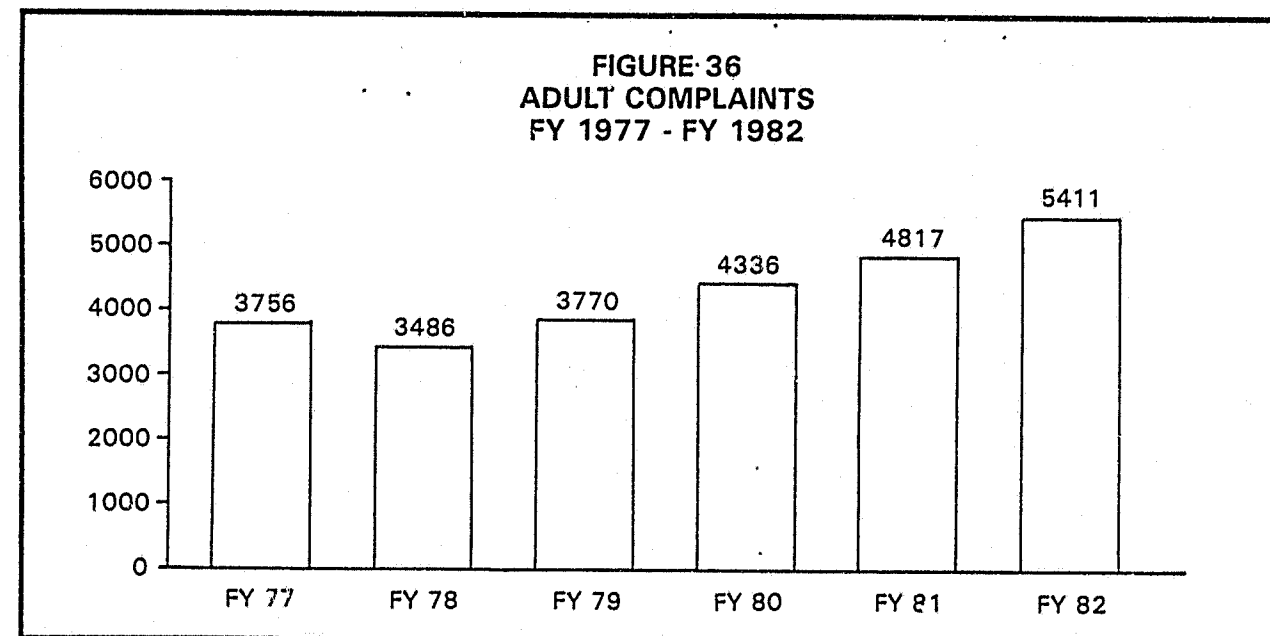
Some intakes involve more than one complaint against the same individual. In FY 1982, there was an average of 1.03 adult complaints per intake. Nearly four out of five complaints against adults, 76.2% of them, resulted in court hearings. The complaints received against adults in FY 1982 by race and sex were:

FIGURE 35
ADULT COMPLAINTS RECEIVED BY RACE AND SEX - FY 1982

Offenses Against	WM	MW	NWM	NWF	TOTAL	Domestic Relations	WM	WF	NWM	NWF	TOTAL
Persons											
Assault	398	39	133	10	580	Domestic Problems	6	6	0	4	16
Contributing	88	9	5	0	102	Non Support-Virginia	1067	65	251	8	1391
Purchase Liquor						Non Support					
for Minor	18	9	7	4	38	Out-of-State	789	30	279	11	1109
Curse and Abuse	12	2	3	1	18	SUB TOTAL	1862	101	530	23	2516
Telephone Abuse	26	3	4	0	33	Other					
Abduction	7	5	1	0	13	Rule, Capias	928	92	326	46	1392
Other	14	0	8	1	23	Review	75	4	15	3	97
SUB TOTAL	563	67	161	16	807	See Intake					
Property						Counselor					
Trespassing	42	8	11	3	64	for Information	131	12	35	3	181
Destruction of						Pre-trial Motion	44	6	5	0	55
Property	29	4	6	1	40	Attorney					
Theft	10	4	0	0	14	Appointment	41	7	14	4	66
Breaking & Entering	4	1	2	0	7	Mental Petition	7	1	0	0	8
Other	24	4	2	3	33	Other	59	5	7	3	74
SUB TOTAL	109	21	21	7	158	SUB TOTAL	1285	127	402	59	1873
Sex Offenses						TOTAL	3866	316	1124	105	5411
Rape	4	0	6	0	10						
Sodomy	9	0	0	0	9						
Indecent Exposure	14	0	0	0	14						
Indecent Liberties	11	0	0	0	11						
Other	9	0	4	0	13						
SUB TOTAL	47	0	10	0	57						

WM = White Males
WF = White Females
NWM = Non-White Males
NWF = Non-White Females

The number of adult complaints from FY 1977-FY 1982 is graphed below.



The table below trends the number of adult offenders from FY 1980 - FY 1982, as well as the changing proportions of first-offenders to repeat-offenders, and of first-offenders who return to Intake for new charges within the fiscal year to first-offenders who do not return. These figures refer to both support and criminal cases.

**FIGURE 37
ADULT OFFENDER COUNTS AND RECIDIVISM TRENDS
FY 1980 - FY 1982**

	FY 1980	FY 1981	FY 1982
Alleged offenders in given year with complaints in previous years	1,056 (33.1%)	1,232 (36.0%)	1,390 (36.3%)
Alleged offenders in given year without complaints in previous years			
• who do return to court that year	156 (4.9%)	220 (6.4%)	174 (4.6%)
• who do not return to court that year	1,982 (62.1%)	1,974 (57.6%)	2,263 (59.1%)
TOTAL	3,194 (100%)	3,426 (100%)	3,827 (100%)
Average No. of Complaints per Alleged Offender in Given Year	1.36	1.41	1.58

Alleged adult offenders who are arrested early enough in the day are scheduled for a preliminary hearing that same day. At this hearing the defendant is formally charged, bond conditions are set or a determination regarding release on recognizance is made, and the defendant is informed of his/her right to counsel which allows a court-appointed attorney if he/she cannot afford one. If the conditions of bond are met by the violator or if he/she is released on

recognizance (r.o.r.), he/she is released from custody and instructed to appear before the Court at a later date. If the conditions of bond or r.o.r. are not met, then the defendant remains in the Adult Detention Center. If the arrest occurs when court is not in session, the Special Justice sets bond or releases the adult on recognizance. If the bond is not met, the defendant is kept in the Adult Detention Center until the next working day, at which time he/she will be brought to court for a hearing. If a withdrawal is requested by the complainant, a meeting with an intake counselor is required. The counselor discusses the matter with the complainant and defendant and suggests a course of action.

When the criminal charge is a felony, the Juvenile and Domestic Relations Court conducts a preliminary hearing, and if the charge is not dropped or reduced to a misdemeanor, the case is bound over for Grand Jury deliberation under the jurisdiction of the Circuit Court. In all misdemeanors the Juvenile and Domestic Relations District Court will render the final disposition.

The following table shows average times required to process adult complaints through the various stages for each of the past three fiscal years:

**FIGURE 38
AVERAGE PROCESSING TIMES (CALENDAR DAYS)
FOR ADULT COMPLAINTS FY 1980 - FY 1982**

PROCESSING STAGE	RELEVANT SUBGROUP OF CASES	FY 1980	FY 1981	FY 1982
Alleged offense to intake	Complaints which specify date of alleged offense	18.2	14.9	16.2
Intake to first hearing	Complaints set for court more than 3 days after intake	42.7	40.2	41.7
Assignment of social investigation to hearing on report	Cases in which judge orders investigation	102.1	86.1	66.7

Final dispositions available in adult cases include jail sentences or other confinement and probation. In juvenile cases when a child is over 15 and treated as an adult in Juvenile Court, the same dispositions, including jail sentences, are used for the juveniles.

The chart below shows the changing distribution of adult complaints by race and sex since 1977:

**FIGURE 39
ADULT WARRANT AND PETITION RACE AND SEX DISTRIBUTION TREND
FY 1977 - FY 1982**

	FY 1977	FY 1978	FY 1979	FY 1980	FY 1981	FY 1982
* N=	2617	2556	2724	3036	3215	3620
White Male	80.5%	81.3%	77.4%	77.4%	74.9%	73.1%
White Female	4.1	3.2	4.8	5.2	4.4	5.4
Non-White Male	14.9	14.6	16.4	16.5	19.7	20.1
Non-White Female	.5	.9	1.3	.9	1.1	1.4
TOTAL	100%	100%	100%	100%	100%	100%

* Rules, capases, reviews, attorney appointments, pre-trial motions, seeing intake counselors for information, and leaving without seeing an intake counselor are not counted.

SUPPORT CASE PROCESSING

Various support actions are processed through the Juvenile and Domestic Relations District Court. Among these, in-state non-support cases, outgoing reciprocals (non-support petitions by a Fairfax County resident against a resident of another state), incoming reciprocals (non-support petitions from an out-of-state resident against a Fairfax County resident), consent orders and Circuit Court support transfers constitute the bulk of the cases processed. In FY 1982, this court received 1,391 in-state non-support complaints and 1,109 out-of-state non-support complaints.

A person seeking to file a non-support action is directed to the Intake Office, though some cases which originate in the Circuit Court are transferred directly to the non-support section. The intake counselor will dismiss the complaint if this court does not have jurisdiction, or in appropriate circumstances with the complainant's consent, the case may be referred to another agency for informal handling.

Outgoing and incoming URESA cases (Uniform Reciprocal Support Enforcement Act) are filed when the petitioner and respondent live in different states. In an outgoing reciprocal, a petitioner will file for support at Intake against an individual in another state. The petitioner then appears before a judge who determines the petitioner's financial needs and signs a "certificate" form. This form states the need of the petitioner and the last known address of the respondent. The Court then sends a letter to the court having jurisdiction where the respondent is believed to be in residence. If the respondent is located by the other court, that court then has the responsibility for administering the payments and taking action if the payments are not made. If the respondent is not located and the petitioner cannot provide another address, the case is closed. An incoming reciprocal is the opposite of an outgoing reciprocal. A petitioner in another state files against a respondent in Fairfax County. The Court is then responsible for finding the respondent and securing support payments.

Orders involving child or wife support which are made in the Circuit Court as result of divorce actions or legal separations can be delegated to the Juvenile and Domestic Relations District Court for collections, enforcement, and modification. An account is established for the respondent in the support section and the case is handled like any other. Finally, support and restitution payments can result from a juvenile action when the custody of a juvenile is granted to persons other than the legal parents; the judge may order that the legal parents pay support for their child to the guardians. An account is established in the support section and enforced in the same manner as an in-state support action.

When a juvenile is ordered by a judge to pay restitution for physical damages which he has done, a restitution account is created for the youth. The juvenile's compliance is also monitored as an in-state support action would be.

The following chart reports the numbers of accounts, the amounts of support and restitution, and the amount of fines and costs collected annually since FY 1975. In April, 1974, the Court instituted an automated collection system in cooperation with the County Office of Research and Statistics. The court's Support Enforcement Program began operation in November, 1975.

FIGURE 40
SUPPORT ACCOUNTS AND AMOUNTS COLLECTED FOR SUPPORT, FINES, COSTS, AND RESTITUTION FY 1975 - FY 1982

	No. of Support Accounts	Support Collected	Collection Rate: Amt. Collected / Amt. Due	Restitution Collected	Fines* Collected	Costs* Collected	Fines & Costs Collected
1975	2,127	\$2,106,751.67		\$15,259.29			\$147,101.47
1976	2,112	2,477,470.90	70.3%	24,484.63			182,665.53
1977	2,168	2,865,972.93	81.7%	20,982.22			242,278.13
1978	2,286	3,290,259.73	82.2%	44,084.66	\$197,249.46	\$148,637.59	345,887.05
1979	2,513	3,575,261.39	76.9%	41,055.01	227,482.96	186,609.69	414,092.65
1980	2,760	3,877,261.76	75.0%	45,731.72	200,218.60	138,034.55	338,253.15
1981	3,014	4,310,589.76	71.7%	59,254.59	192,990.65	127,319.96	320,310.61
1982	3,290	4,923,347.21	70.8%	68,899.80	193,829.10	105,206.50	299,035.60

*Prior to fiscal year 1978 collections of fines and costs were reported together, rather than separately.

FIGURE 41
RESTITUTION, FINES AND COSTS COLLECTED FY 1975 - FY 1982

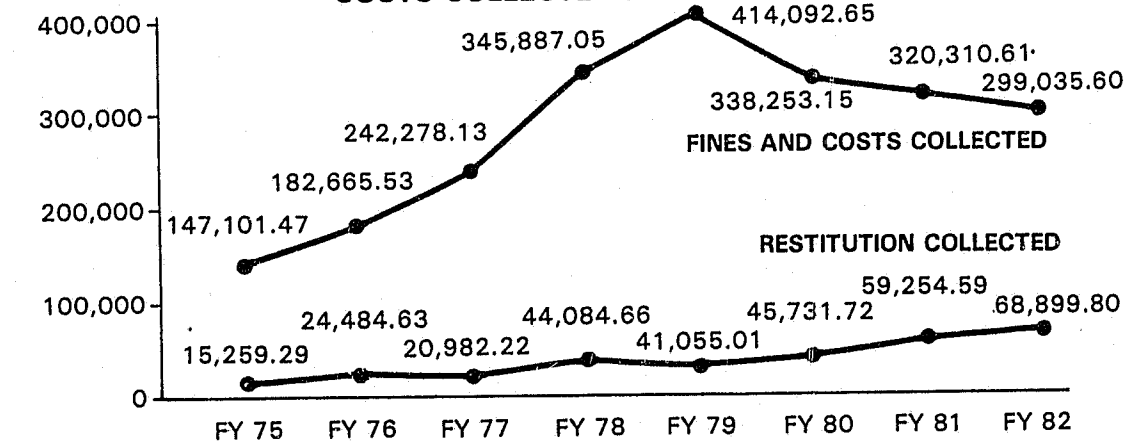
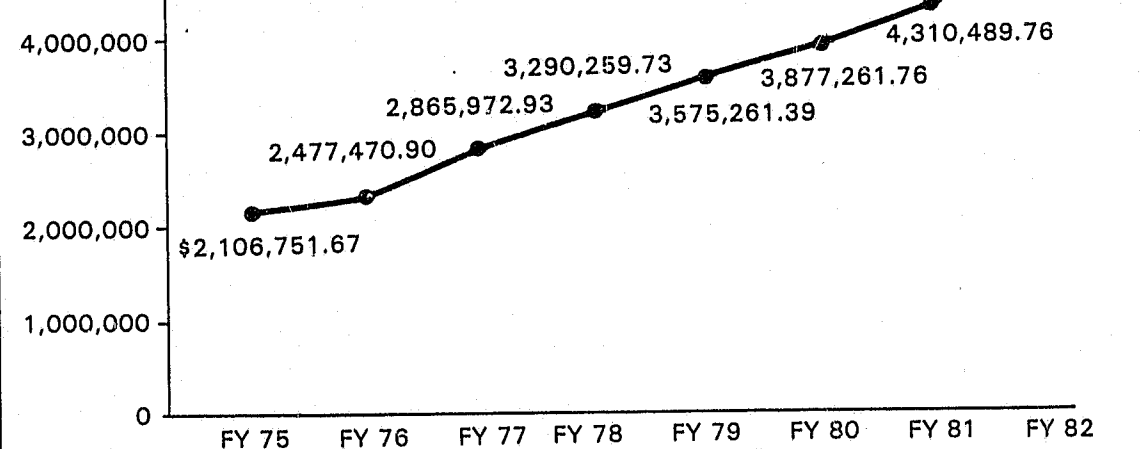
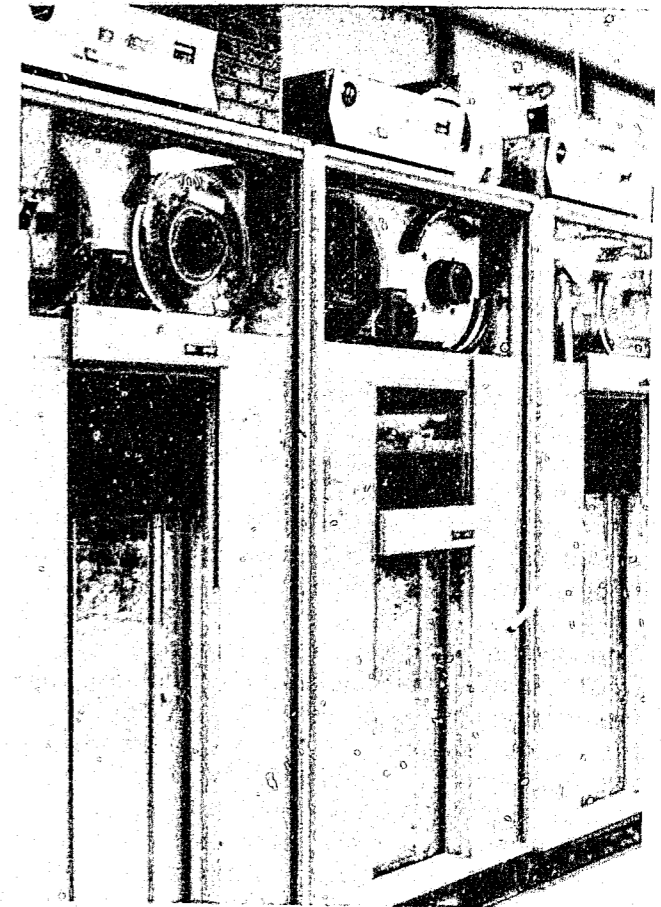


FIGURE 42
SUPPORT COLLECTED FY 1975 - FY 1982



V. COMMENTS ON THE DATA



The statistics presented in this report are primarily derived from the Court's computerized Management Information System (JUVARE). Although these statistics represent the most accurate data available at the time of the report's preparation, there are serious problems with those data, problems of completeness, accuracy, and consistency. Court staff have invested considerable efforts in formulating proposals for redesign of JUVARE, to address these problems. The Fairfax County Office of Research and Statistics has agreed to assist the Court in undertaking the preliminary stages of a "structured systems redesign" in FY 1983. For the present however, it should be noted that some of the data reported here for previous years are different than data appearing in previous annual reports, and that none of these data can be reported with full confidence.

These data do indicate that shifts in the nature of delinquency and in the Court's workload reflect demographic trends in Fairfax County. Changing distributions in the types of offenders, complaints, complainants, social investigations, and court hearings all reflect changes in the size and distribution of the county's population. The juvenile population "at risk" has declined for all but one of the past five years; that year, FY 1981, was the only one in which the number of juvenile delinquency complaints—that is, non-traffic, non-custody, non-administrative complaints against juveniles—did not also decline. As the non-juvenile population of the county continues to grow, the number of adult complaints received by the Court increases also.

Thus in FY 1982, although the total number of complaints remained virtually unchanged from the year before, there was a shift from activity involved in processing juvenile non-custody complaints toward activity involved in processing custody and adult complaints. The Court handled 1% fewer juvenile non-traffic offenders and 3% fewer juvenile non-traffic complaints, but 12% more adult offenders and adult complaints.

Among juvenile non-traffic complaints, there were fewer complaints of property offenses and more custody complaints. Complaints of property offenses fell to 33% of all juvenile non-traffic complaints, from 36% in FY 1981, and 40% in FY 1979, while custody complaints increased from 23% in FY 1981 to 25% in FY 1982. Somewhat surprisingly, in view of increasing public attention to problems of teenage alcoholism and increased enforcement of liquor laws among juveniles by agents of the Virginia Alcohol and Beverage Commission during the past year, all types of drug and alcohol complaints declined in both relative and absolute terms from FY 1981 to FY 1982.

Shifts in types of complainants were consistent with these shifts in types of complaints: police brought fewer complaints against juveniles, while immediate family members and other relatives brought more. The portion of juvenile non-traffic complaints brought by police dropped from 34% to 29% during the past year, while the portion brought by family members increased from 32% to 35%. Continuing a trend of the last several years, probation counselors also account for a growing share of juvenile complaints, as they file increasing numbers of rules, capiases, reviews, and violations.

The increasing demand for processing custody and adult complaints produced shifts in types of social investigations and court hearings as well. Probation staff conducted 29% more investigations involving custody and visitation disputes during FY 1982 than the year before, but 4% fewer other juvenile investigations. Despite this change, and the fact that custody investigations are especially time-consuming, the average time required to complete social investigations about juveniles decreased from 75 days in FY 1981 to only 60 days in FY 1982. Court hearings on custody matters—also an especially time-consuming type—increased 10% over the previous years. Hearings on "reciprocals," support matters in which one of the spouses lives out-of-state, increased about 40% while other support hearings increased about 30%. Traffic hearings decreased 7%, while other juvenile hearings decreased 14%.

Trends in recidivism also differ for juveniles and for adults. In each of the past two years, there has been a slight and gradual increase in the percentages of juvenile non-traffic offenders who have had neither complaints in previous years nor complaints of new criminal charges within the remainder of that year. By contrast, the percentage of adult offenders coming to court with records of previous complaints has increased slightly in each of the past two years.

As the Court prepared to open its own 33-bed Juvenile Detention Center in FY 1983, overcrowding of secure detention facilities remained a most serious concern in FY 1982. Of special concern was the increased use of the Adult Detention Center to hold juveniles pre-dispositionally. The number of detention-days spent by juveniles in the adult facility increased 56% over last year, representing by far the greatest use ever of such a facility, as both the number of juveniles detained there and their average length of stay increased dramatically. As the court's Less-Secure Shelter completed its first full year of operation, use of less-secure detention also increased during the year.

The number of children committed by Fairfax to the State Department of Corrections decreased from 68 in FY 1981 to 56 in FY 1982; however more than offsetting this decrease was a marked increase in the use of state funds for the special placement of children in private residential institutions. In the first full year of its operation, the number of children placed through this program increased from 58 to 104. At the other end of the dispositional spectrum, judges also made much greater use of the Court's Community Service Project, ordering

557 children to participate in that program compared to 413 the year before and 253 the year before that.

The Court's use of volunteer services continued to expand. The Volunteer Coordinator supervised the equivalent of nearly ten person-years of service donated by volunteers in varied capacities; the Volunteer Learning Program offered the equivalent of two person-years of tutoring services. Nonetheless, the Court remained unable to recruit salaried house-parents to operate pre-dispositional group homes at their budgeted capacity.

Although the Support Enforcement unit collected nearly \$5,000,000, the collection rate fell for the fourth straight year, from 82.2% in FY 1978 to 70.8% last year, as the number of cases under active enforcement continues to grow at a rapid pace without any increase in enforcement staff.

VI. THE FUTURE



The past year for the Court has been one of consolidation of its community services and one of increased capacity for its residential services. The population shifts, for at least the short term, are expected to continue with the resultant reduction of juvenile delinquent activity and increase in custody and domestic relations complaints. These shifts may require a shift in increase in resources to meet these different demands.

The opening of the new county Juvenile Detention Center is expected to have an impact on the serious overcrowding at the Northern Virginia Regional Detention Home and reduce the use the Court must make of the Adult Detention Center. The unique design of the new Center, coupled with its programmatic thrusts should serve to have the Center develop into a model for such Centers.

Efforts will continue to upgrade the facilities available for the Court in which to conduct its business. It is anticipated the plans for the courthouse remodeling will be completed during the next year in preparation for actual construction.

The Court and its staff could not have adequately done its work without the many community and student volunteers who provided assistance to the staff, and the community agencies with which collaborative and cooperative programming was done. The Court is grateful to the Board of Supervisors, the State Board of Corrections and the State Supreme Court for the resources which have been provided and to its Citizen's Advisory Council for its encouragement, advice and support. Special recognition should also be given to the men and women who work for the Court who daily must deal with the difficult problems of children, youths and adults who come before them with skill, compassion and firmness.

END