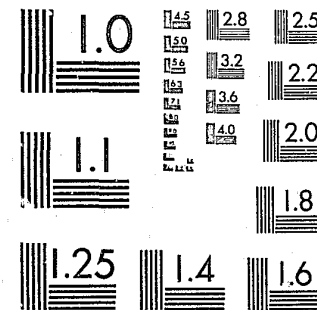


National Criminal Justice Reference Service



This microfiche was produced from documents received for inclusion in the NCJRS data base. Since NCJRS cannot exercise control over the physical condition of the documents submitted, the individual frame quality will vary. The resolution chart on this frame may be used to evaluate the document quality.



MICROCOPY RESOLUTION TEST CHART  
NATIONAL BUREAU OF STANDARDS-1963-A

Microfilming procedures used to create this fiche comply with the standards set forth in 41CFR 101-11.504.

Points of view or opinions stated in this document are those of the author(s) and do not represent the official position or policies of the U. S. Department of Justice.

National Institute of Justice  
United States Department of Justice  
Washington, D. C. 20531

12/29/83

# A COMPARISON OF ADMISSION CHARACTERISTICS OF YOUTH AUTHORITY WARDS

1973 - 1982

91591

U.S. Department of Justice  
National Institute of Justice

This document has been reproduced exactly as received from the person or organization originating it. Points of view or opinions stated in this document are those of the authors and do not necessarily represent the official position or policies of the National Institute of Justice.

Permission to reproduce this copyrighted material has been granted by

California Youth Authority

to the National Criminal Justice Reference Service (NCJRS).

Further reproduction outside of the NCJRS system requires permission of the copyright owner.

May, 1983

CALIFORNIA  
YOUTH AUTHORITY

State of California  
 GEORGE DEUKMEJIAN,  
 GOVERNOR  
 Youth and Adult Correctional Agency  
 N. A. CHADERJIAN,  
 SECRETARY



# Department of the Youth Authority

GEORGE HOWARD, CHIEF  
 Information Management Division

MAX ZEIGLER  
 Manager  
 Information Systems Bureau

HARMON L. ORSBORN  
 Research Analyst II

KENNETH E. MURRAY  
 Research Analyst I

BERNICE CARBERRY  
 Program Technician III

Patricia L. Vitt  
 Office Technician

LDA

JAMES ROWLAND,  
 DIRECTOR

GEORGE R. ROBERTS,  
 CHIEF DEPUTY DIRECTOR

FRANCISCO J. ALARCON,  
 Deputy Director  
**ADMINISTRATIVE SERVICES  
 BRANCH**

JAMES C. BARNETT,  
 Deputy Director  
**PREVENTION AND COMMUNITY  
 CORRECTIONS BRANCH**

WILBUR A. BECKWITH  
 Deputy Director  
**PAROLE SERVICES BRANCH**

C. A. TERHUNE,  
 Deputy Director  
**INSTITUTIONS AND CAMPS  
 BRANCH**

## A COMPARISON OF ADMISSION CHARACTERISTICS OF YOUTH AUTHORITY WARDS, 1973 - 1982

### INTRODUCTION

Over the years, the Youth Authority has gathered basic data on the characteristics of first commitments. The number of items collected and the methods of collection have varied considerably and it is not possible to recapture all of these data in a uniform fashion for comparative analysis. For instance, in 1974 a new computer system was initiated which resulted in a change in the type of information collected. Thus, many of the items in this report have data only for 1974 and subsequent years. In analyzing the data, we assume that variations reflect a change in characteristics or behavior. Where there are known inconsistencies in reporting, there are notations to that effect in the Summary of Items. These data were originally gathered from Referral Documents, Clinic Summaries, and Initial Home Visit Data Forms.

The offense categories used in this report consist of the following:

Violent offenses: homicide, robbery, all types of assaults, violent rape, and kidnapping.

Property offenses: burglary, theft (including auto), forgery and check offenses, and arson.

Narcotic and drug offenses: all offenses related to narcotics and dangerous drugs.

Welfare and Institutions Code violations: all age-related offenses such as incorrigibility, truancy, runaway, foster home or county camp failure, and escape from county camp or juvenile hall. However, beginning January 1977, further commitments for these offenses, except escape, were prohibited.

Other offenses: all offenses not specifically mentioned above.

NOTED  
 OCT 18 1983  
 ACQUISITIONS

## HIGHLIGHTS

During the second half of 1981, the Youth Authority implemented a policy of rejecting many of the more serious commitments from criminal courts in order to ameliorate the pressures of increasing institution population. This policy continued through September 1982, when it was cancelled because Proposition 8, passed in the June election, barred a majority of these cases from Youth Authority commitments.

Any shift in characteristics in 1981 and 1982 must be interpreted in light of this change in policy.

- After decreasing to a low of 49 percent, juvenile court commitments now are 67 percent of total first admissions.
- Ethnic minorities now constitute 68 percent of all new commitments to the Youth Authority. Nine years ago, 56 percent of admissions were ethnic minorities.
- Violent type offenses represent 45 percent of all new commitments to the Youth Authority. In 1973, they represented only 36 percent.
- The use or possession of weapons in conjunction with the offense has increased from 32 percent in 1981 to 35 percent this year.
- Seventy-two percent of the wards who were in the job market were unemployed at the time of the offense.
- Most of the wards were living in the parental home (76 percent) and 46 percent of the wards came from two-parent homes, either natural parents or parent surrogates.
- Over one-half of the wards had family members with criminal records.
- By far, the major problems in the wards' adjustment were negative peer group influences and mental-emotional problems.

## SUMMARY OF ITEMS

### Sex

The percentage of female first commitments declined from eight percent in 1973 to just over four percent in 1978 and has fluctuated between four and five percent over the past five years.

### Court

Historically, the juvenile court first commitments have been the larger proportion of the commitments. The one exception occurred in 1976 when the criminal court commitments were the larger proportion (51 percent). Otherwise, in the decade shown, the juvenile court commitments varied from 51 percent in 1974 to 58 percent in 1978. Since 1978, juvenile court commitments have declined to 53 percent in 1981. Then in 1982, rose to 67 percent because of factors discussed in the "Highlights".

### Area of Commitment

More than half of all commitments are consistently from Southern California, varying from a 57 percent low in 1977 to the high of 63 percent in 1980. The Los Angeles proportion has increased steadily from 32 percent in 1974 to 45 percent in 1982.

### Commitment Offense

The proportion of violent type offenses climbed steadily from 36 percent in 1973 to 49 percent in 1981 then declined to 45 percent in 1982. Narcotic and drug commitments have decreased from nine percent of the total to three percent.

### Ethnic Group

Commitments of minority groups have increased from 56 percent of the total to a high of 68 percent. The Black ethnic group has the highest proportion at 37 percent.

### Median Age

Age at commitment declined to 17.5 in 1982 reflecting the decrease in criminal court commitments.

### Number of Escapes

Wards with prior escapes from custody averaged 13 percent of the total commitments.

### Co-offenders

The proportion of commitment offenses with more than one youth involved has increased to 47 percent.



#### Weapons with Offense

This year there was an increase in the number of wards that either possessed or used a weapon during the commission of the current offense (35 percent).

#### Physical Handicaps

Only a small proportion of wards have a physical disability at time of commitment (4 percent).

#### Last Grade Enrolled in School

Differences across the years may be a function of reporting changes. The more recent figures may be most representative of the population at commitment. In 1976, those last enrolled at the 10th grade level or below comprised 43 percent of the total. This proportion has since increased each year to 52 percent in 1982.

#### Reading Comprehension

In 1973 and 1974, reading comprehension was tested by the Gates-MacGinitie. In the following years, the reading comprehension was tested by the Test of Adult Basic Education (TABE). In these years, the mean grade level was about the seventh grade. The observable difference in mean grade level can be attributed to the change in test rather than to the reading ability of the wards.

#### Arithmetic Reasoning

In 1973 and 1974, the arithmetic ability of wards was tested by the Comprehensive Test of Basic Skills. Thereafter, the Test of Adult Basic Education (TABE) was used. The mean grade level has varied between 6.4 to 6.7 under the new testing procedure.

#### Prior Convictions or Sustained Petitions

Beginning in 1978, these data represent only convictions and sustained petitions. Data for the years 1973-77 reflect all recorded law enforcement or probation contacts. The two conditions are not comparable.

#### Median Age at First Prior Conviction or Sustained Petition

Because of the change in the definition of the preceding item, the data for 1978-1982 have no comparability with prior years.

#### Prior Commitments

In 1982, 54 percent of the wards had experienced county commitments prior to their commitment to the Youth Authority.

#### Median Age at First Prior Commitment

For those wards experiencing a county commitment, the median age at such a commitment decreased to almost 15 years in 1982.

#### I-Level

Most of the differences observable in this item can be attributed to a change in the method of making the diagnosis.

#### Religion

The proportion of wards claiming either Protestant or Catholic religious preference has remained fairly constant in recent years.

#### Major Problem Area

Starting in 1974, parole agents were asked to designate the major problem the wards experienced while in the community. Negative peer group influences and mental-emotional problems predominated.

#### Employment

About three-fifths of the wards were in the job market at commitment. Approximately 72 percent of those in the job market were unemployed.

#### Placement Before Commitment

Almost three-quarters of the wards were living in their parents' home at the time of the offense leading to Youth Authority commitment.

#### Out-of-Home Placements

Thirty-six percent of the wards had been placed out of the parental home at some time prior to Youth Authority commitment.

#### Parental Configuration

About 46 percent of the wards came from two-parent homes (either natural or substitute parents).

#### Parents' Marital Status

Approximately two-thirds of the wards came from homes broken by divorce, separation or death of parents.

#### Income Level of Home

More than one-half of the wards came from homes with an adequate or better than adequate income.

Family Income from Public Assistance

Sixty-two percent of the families received no public assistance.

Criminal Record of Family Members

Almost one-third of the wards had siblings with criminal records, and over one-half of the wards came from families with criminal records.

Economic Aspects of Immediate Neighborhood

More than one-half of the wards came from homes where the neighborhood was considered average or above in maintenance and appearance.

Delinquency Aspects of Immediate Neighborhood

Almost two-thirds of the wards lived in neighborhoods not considered highly delinquent.

TABLE 1  
CHARACTERISTICS OF FIRST COMMITMENTS TO THE YOUTH AUTHORITY, 1973-1982  
(Showing percents of totals)

Characteristics	Total Admissions									
	1973	1974	1975	1976	1977	1978	1979	1980	1981	1982
Total first admissions.....	2757	3002	3404	3559	3626	3776	3640	3968	4083	3316
Male.....	91.9	92.9	94.7	94.9	95.3	95.7	95.8	96.1	95.9	95.2
Female.....	8.1	7.1	5.3	5.1	4.7	4.3	4.2	3.9	4.1	4.8
Court.....	2757	3002	3404	3559	3626	3776	3640	3968	4083	3316
Juvenile.....	53.1	50.9	53.7	49.3	55.5	58.2	56.5	55.2	53.1	67.3
Criminal.....	46.9	49.1	46.3	50.7	45.4	41.8	43.5	44.8	46.9	32.7
Area of commitment.....	2757	3002	3404	3559	3626	3776	3640	3968	4083	3316
Southern California.....	59.9	59.6	61.9	58.0	57.4	58.6	60.7	62.8	61.8	61.7
Los Angeles.....	35.7	32.3	33.5	33.5	35.3	36.4	41.3	42.2	43.3	44.6
9 other counties.....	24.2	27.3	28.4	24.5	22.1	22.2	19.4	20.6	18.5	17.1
San Francisco Bay area.....	20.5	19.8	21.0	23.5	23.6	22.3	21.0	19.0	20.4	19.0
Sacramento Valley.....	7.3	7.7	7.2	7.6	6.0	6.0	6.1	5.9	5.9	7.2
San Joaquin Valley.....	7.4	7.5	6.2	7.2	8.6	9.0	7.9	8.0	7.6	8.6
22 other counties.....	4.9	5.4	3.7	3.7	4.4	4.1	4.3	4.3	4.3	3.5
Commitment offense.....	2757	3002	3404	3559	3626	3776	3640	3968	4083	3316
Violent type offenses.....	36.1	39.2	44.8	44.3	45.1	46.3	47.8	49.9	49.1	45.0
Property type offenses.....	37.4	39.0	39.2	42.2	45.3	47.0	46.2	43.5	44.9	47.5
Narcotic & drug offenses.....	9.4	7.6	4.5	3.5	2.5	2.4	2.4	2.3	2.1	2.7
W & I Code violations.....	10.4	8.8	5.9	6.3	3.6	0.6	0.3	0.4	0.2	-
Other offenses.....	6.7	5.4	5.6	3.7	3.5	3.7	3.3	3.9	3.7	4.8
Ethnic group.....	2757	3002	3404	3559	3626	3776	3640	3968	4083	3316
White.....	44.5	47.3	40.7	40.5	39.3	39.3	35.3	33.7	31.9	32.5
Hispanic.....	18.9	19.8	21.4	23.2	25.6	26.7	28.4	28.6	27.5	28.2
Black.....	33.9	30.1	34.4	33.7	32.0	31.7	33.8	35.4	38.0	36.7
Other.....	2.7	2.8	3.5	2.6	3.1	2.3	2.5	2.3	2.6	2.6
Median age.....	18.0	18.1	18.0	18.2	17.9	17.8	17.9	17.9	17.9	17.5
Number of escapes.....	2757	3002	3404	3559	3626	3776	3640	3968	4083	3316
None or unknown.....	82.4	84.5	82.3	80.8	82.1	84.9	85.9	84.5	88.7	87.5
One or more.....	17.6	15.5	17.7	19.2	17.9	15.1	14.1	15.5	11.3	12.5
Co-offenders.....	2757	3002	3404	3559	3626	3776	3640	3968	4083	3316
None or unknown.....	53.2	49.7	51.1	47.8	49.8	50.9	49.3	48.6	54.5	53.4
One or two.....	39.6	41.7	42.1	44.3	43.3	41.4	43.0	43.8	39.4	39.6
Three or more.....	7.2	8.6	6.8	7.9	6.9	7.7	7.7	7.6	6.1	7.0

TABLE 1 (Continued)

CHARACTERISTICS OF FIRST COMMITMENTS TO THE YOUTH AUTHORITY, 1973-1982  
(Showing percents of totals)

## Total Admissions

Characteristics	1973	1974	1975	1976	1977	1978	1979	1980	1981	1982
Weapons with offense.....	2757	3002	3404	3559	3626	3776	3640	3968	4083	3316
None or unknown.....	65.5	63.6	61.3	62.3	62.1	63.8	61.5	62.5	68.2	65.5
Yes.....	34.5	36.4	38.7	37.7	37.9	36.2	38.5	37.5	31.8	34.5
Physical handicaps.....	-	3002	3404	3559	3626	3776	3640	3968	4083	3316
None or unknown.....	-	92.3	94.3	89.4	89.2	89.5	88.5	90.2	93.3	96.3
Yes.....	-	7.7	5.7	10.6	10.8	10.5	11.5	9.8	6.7	3.7
Last grade enrolled in school.	2659	2845	3047	3305	3386	3567	3453	3548	3220	2358
Grades 1-9.....	18.1	15.8	20.2	16.5	16.4	19.2	18.3	19.7	21.2	21.2
Grade 10.....	25.2	24.8	26.6	26.0	26.4	26.2	28.7	27.0	27.5	31.1
Grade 11.....	31.3	30.7	32.5	35.0	35.2	34.9	32.7	33.6	32.4	31.3
Grade 12.....	16.1	17.7	11.4	13.2	14.2	13.6	13.9	12.9	12.9	15.3
H. S. grad or college.....	9.3	11.0	9.3	9.3	7.8	6.1	6.4	6.8	6.0	1.1
Reading comprehension (mean grade level).....	8.0	8.2	6.9	7.0	7.0	7.0	6.8	6.8	6.9	6.9
Arithmetic reasoning (mean grade level).....	5.9	6.0	6.5	6.6	6.5	6.7	6.6	6.5	6.4	6.6
Prior convictions or sustained petitions <sup>a</sup> /.....	2743	2991	3205	3468	3590	3743	3588	3862	3674	2891
None.....	4.4	5.6	5.3	7.3	7.0	13.6	14.5	15.9	19.6	21.1
1-4.....	17.8	25.8	27.7	30.6	30.6	55.5	61.1	60.2	61.4	58.8
5-7.....	43.5	21.9	22.5	20.9	22.6	19.9	18.6	18.1	13.8	15.2
8 or more.....	34.3	46.7	44.5	41.2	39.8	11.0	5.8	5.8	5.2	4.9
Median age at first prior conviction or petition <sup>a</sup> /.....	13.9	13.9	13.9	14.2	14.0	14.7	14.9	14.9	14.9	14.6
Prior commitments.....	2742	2991	3205	3468	3590	3743	3588	3862	3674	2891
None.....	48.9	48.6	43.3	43.6	38.1	37.5	35.1	39.0	44.6	46.1
One.....	29.7	29.3	32.9	30.0	31.3	30.9	30.6	29.8	27.9	24.4
Two.....	14.1	13.5	14.9	15.8	17.0	19.3	20.2	17.3	14.9	16.2
Three or more.....	7.3	8.6	8.9	10.6	13.6	12.3	14.1	13.9	12.6	13.3

<sup>a</sup>/ Definition changed in 1978. Formerly titled Prior Delinquent Contacts.

TABLE 1 (Continued)

CHARACTERISTICS OF FIRST COMMITMENTS TO THE YOUTH AUTHORITY, 1973-1982  
(Showing percents of totals)

## Total Admissions

Characteristics	1973	1974	1975	1976	1977	1978	1979	1980	1981	1982
Median age at first prior commitment.....	15.9	15.9	15.9	15.9	15.7	15.6	15.6	15.7	15.6	15.2
I-Level.....	2424	2802	2472	2855	2795	2849	2801	2668	2666	2041
I-2.....	7.5	8.0	10.7	9.4	9.9	8.3	9.0	11.3	11.3	12.6
I-3.....	51.0	51.0	54.8	54.5	57.8	59.4	60.9	54.8	56.6	58.8
I-4 and I-5.....	41.5	41.0	34.5	36.1	32.3	32.3	30.1	33.9	32.1	28.6
Religion.....	2314	2404	2550	2725	2849	2935	2161	2242	2482	2076
Catholic.....	42.8	45.4	46.7	46.9	45.3	48.3	46.5	46.4	45.9	43.8
Protestant.....	55.0	53.3	51.2	51.4	52.8	49.0	52.4	53.4	53.9	56.0
Other.....	2.2	1.3	2.1	1.7	1.9	2.7	1.1	0.2	0.2	0.2
Major problem area.....	-	2456	2753	2741	2872	3029	2733	2887	2718	2318
None.....	-	1.2	1.0	1.6	1.3	1.0	0.6	1.5	0.9	0.3
Employment.....	-	7.1	7.0	7.4	5.9	5.4	5.1	6.3	6.3	4.4
Family.....	-	12.2	8.4	7.0	8.5	8.5	7.5	7.1	6.6	7.9
School.....	-	3.8	3.3	3.2	3.3	2.7	2.5	2.7	2.5	2.1
Drugs/alcohol.....	-	16.7	14.2	14.5	14.3	14.0	15.2	15.2	13.9	11.3
Peer influence.....	-	37.8	42.9	41.6	42.8	41.6	41.2	39.7	43.4	47.3
Mental/emotional.....	-	21.2	23.2	24.7	23.9	26.8	27.9	27.5	26.4	26.7
Employment.....	-	2547	2857	2840	3011	3166	2801	2875	2794	2381
Not in job market.....	-	36.5	37.7	34.2	36.4	32.7	33.1	32.9	32.0	40.0
Unemployed.....	-	38.5	41.9	46.0	44.2	45.7	43.7	45.7	45.9	43.6
Employed part-time.....	-	13.4	12.4	11.8	10.0	11.6	12.3	9.1	13.6	10.8
Employed full-time.....	-	11.6	8.0	8.0	9.4	10.0	10.9	12.3	8.5	5.6
Placement before commitment...	-	2548	2904	2881	3033	3186	2809	2899	2831	2411
Parents.....	-	73.1	73.4	72.4	73.6	74.0	73.0	74.2	74.1	76.1
Relatives.....	-	8.8	9.3	9.4	8.6	9.1	9.7	10.1	8.4	9.0
Foster/group home.....	-	6.0	5.3	5.2	6.5	6.6	5.3	5.2	6.4	6.4
Independent.....	-	12.1	12.0	13.0	11.3	10.3	12.0	10.5	11.1	8.5
Out-of-home placement.....	-	2434	2740	2724	2795	2985	2605	2737	2626	2237
None.....	-	65.7	68.1	67.8	64.0	65.1	63.4	63.2	64.4	64.4
One.....	-	16.3	16.8	15.8	16.9	15.6	15.9	16.8	16.5	15.4
Two or more.....	-	18.0	15.1	16.4	19.1	19.3	20.7	20.0	19.1	20.2

TABLE 1 (Continued)

CHARACTERISTICS OF FIRST COMMITMENTS TO THE YOUTH AUTHORITY, 1973-1982  
(Showing percents of totals)

## Total Admissions

Characteristics	1973	1974	1975	1976	1977	1978	1979	1980	1981	1982
Parental configuration.....	-	2578	2919	2902	3068	3217	2838	2996	2865	2442
No parents in home.....	-	6.1	4.7	5.5	6.6	5.9	5.7	5.8	5.7	5.1
One-parent home.....	-	41.0	44.2	45.1	46.2	46.1	61.8	62.0	62.2	48.9
Two-parent home.....	-	52.9	51.1	49.3	47.2	48.0	32.5	32.2	32.1	46.0
Parents' marital status.....	2702	2965	3128	3413	3511	3627	3500	3549	3035	2490
Never married.....	3.9	7.6	5.9	6.5	8.9	10.2	12.7	12.1	13.1	11.2
Presently married.....	30.7	34.5	33.1	31.8	29.7	30.0	28.0	25.7	25.7	22.0
No longer married.....	65.4	57.9	61.0	61.7	61.4	59.8	59.3	62.2	61.2	66.8
Income level of home.....	-	2516	2833	2801	2879	3080	2724	2826	2702	2323
Less than adequate.....	-	41.1	43.7	44.2	46.3	42.8	42.7	43.4	42.8	46.7
Adequate.....	-	52.3	51.9	51.6	49.5	53.1	52.3	52.8	52.7	50.2
More than adequate.....	-	6.6	4.4	4.2	4.2	4.1	5.1	3.8	4.5	3.1
Family income from public assistance.....	-	2443	2713	2706	2773	2944	2586	2654	2570	2231
None.....	-	66.1	62.6	62.5	60.5	63.0	63.2	62.3	64.4	62.0
Less than half.....	-	8.0	9.8	9.0	9.0	9.2	9.5	10.0	8.7	8.8
More than half.....	-	25.9	27.6	28.5	30.5	27.8	27.3	27.7	26.9	29.2
Criminal record of family members.....	-	2299	2616	2568	2652	2838	2522	2575	2549	2134
None.....	-	51.8	50.2	51.6	49.0	47.4	45.7	46.6	47.7	48.6
Parents only.....	-	9.7	8.7	8.0	7.8	7.6	9.2	8.9	8.3	10.5
Siblings only.....	-	28.6	32.3	33.0	34.6	34.4	34.0	32.3	32.0	29.1
Both.....	-	9.9	8.8	7.4	8.6	10.6	11.1	12.2	12.0	11.8
Economic aspects of immediate neighborhood.....	-	-	2523	2848	2836	2963	3123	2760	2855	2349
Above average.....	-	-	8.0	7.3	6.9	6.3	6.1	7.8	7.3	5.5
Average.....	-	-	47.7	50.0	50.1	50.3	51.4	47.8	48.5	48.6
Below average.....	-	-	44.3	42.7	43.0	43.4	42.5	44.4	44.2	45.9
Delinquency aspects of immediate neighborhood.....	-	-	2504	2823	2803	2957	3119	2744	2793	2330
Nondelinquent.....	-	-	9.0	6.4	6.6	5.7	5.9	6.8	6.9	5.1
Minimally delinquent.....	-	-	27.0	25.1	25.2	22.2	24.6	25.5	23.6	24.5
Moderately delinquent.....	-	-	35.0	37.1	36.3	39.4	37.4	36.0	34.6	35.1
Highly delinquent.....	-	-	29.0	31.4	31.9	32.7	32.1	31.7	34.9	35.3

Note: Unless indicated differently, responses coded as unknown were removed from each item thus accounting for differing totals.

TABLE 2

CHARACTERISTICS OF FIRST COMMITMENTS TO THE YOUTH AUTHORITY, 1973-1982  
(Showing percents of totals)

## Males Only

Characteristics	1973	1974	1975	1976	1977	1978	1979	1980	1981	1982
Total first admissions.....	2534	2790	3224	3377	3457	3614	3487	3814	3914	3156
Court.....	2534	2790	3224	3377	3457	3614	3487	3814	3914	3156
Juvenile.....	51.1	49.0	53.2	48.4	55.1	57.6	56.1	54.7	52.5	66.8
Criminal.....	48.9	51.0	46.8	51.6	44.9	42.4	43.9	45.3	47.5	33.2
Area of commitment.....	2534	2790	3224	3377	3457	3614	3487	3814	3914	3156
Southern California.....	59.7	60.8	62.1	58.5	57.8	58.9	61.2	63.0	62.3	62.3
Los Angeles.....	36.4	33.4	34.1	33.9	35.3	37.0	41.9	42.3	43.8	45.2
9 other counties.....	23.3	27.4	28.0	24.6	22.5	21.0	19.3	20.7	18.5	17.1
San Francisco Bay area.....	20.4	19.5	20.9	23.4	23.4	22.0	20.8	19.1	19.9	18.6
Sacramento Valley.....	7.4	7.2	7.2	7.4	6.1	6.1	6.0	6.0	5.9	7.3
San Joaquin Valley.....	7.4	7.3	6.1	7.1	8.5	9.0	7.8	7.7	7.6	8.5
22 other counties.....	5.0	5.2	3.7	3.6	4.2	4.0	4.2	4.2	4.3	3.3
Commitment offense.....	2534	2790	3224	3377	3457	3614	3487	3814	3914	3156
Violent type offenses.....	37.0	40.1	44.9	44.3	44.8	45.9	47.4	49.6	49.3	44.2
Property type offenses.....	39.0	40.0	39.8	42.7	46.0	47.4	46.6	43.8	44.9	48.4
Narcotic & drug offenses.....	9.0	7.0	4.2	3.2	2.3	2.4	2.4	2.3	2.0	2.6
W & I Code violations.....	8.5	7.4	5.6	6.3	3.5	0.6	0.3	0.4	0.2	-
Other offenses.....	6.5	5.5	5.5	3.5	3.4	3.7	3.3	3.9	3.6	4.8
Ethnic group.....	2534	2790	3224	3377	3457	3614	3487	3814	3914	3156
White.....	44.2	46.6	40.7	40.3	39.5	38.8	34.9	33.5	31.6	31.8
Hispanic.....	18.1	20.2	21.4	23.4	25.6	27.0	28.3	28.6	27.7	28.7
Black.....	34.1	30.5	34.3	33.8	31.9	31.8	34.4	35.8	38.1	36.9
Other.....	2.6	2.8	3.6	2.5	3.0	2.4	2.4	2.1	2.6	2.6
Median age.....	18.1	18.2	18.0	18.2	18.0	17.8	17.9	17.9	17.9	17.6
Number of escapes.....	2534	2790	3224	3377	3457	3614	3487	3814	3914	3156
None or unknown.....	82.4	84.8	82.2	80.9	81.8	84.6	85.9	84.6	88.8	87.9
One or more.....	17.6	15.2	17.8	19.1	18.2	15.4	14.1	15.4	11.2	12.1
Co-offenders.....	2534	2790	3224	3377	3457	3614	3487	3814	3914	3156
None or unknown.....	52.0	49.0	50.9	47.5	49.5	50.7	49.5	48.3	54.2	53.4
One or two.....	40.6	42.3	42.6	44.5	43.5	41.6	43.0	44.2	39.7	39.8
Three or more.....	7.4	8.7	6.5	8.0	6.9	7.7	7.5	7.5	6.1	6.8
Weapons with offense.....	2534	2790	3224	3377	3457	3614	3487	3814	3914	3156
None or unknown.....	64.3	62.6	60.8	61.7	61.8	63.8	61.7	62.9	68.0	65.6
Yes.....	35.7	37.4	39.2	38.3	38.2	36.2	38.3	37.1	32.0	34.4

TABLE 2 (Continued)

CHARACTERISTICS OF FIRST COMMITMENTS TO THE YOUTH AUTHORITY, 1973-1982  
(Showing percents of totals)

## Males Only

Characteristics	1973	1974	1975	1976	1977	1978	1979	1980	1981	1982
Physical handicaps.....	-	2790	3224	3377	3457	3614	3487	3814	3914	3156
None or unknown.....	-	93.3	94.3	89.4	89.0	89.6	88.8	91.8	94.6	96.3
Yes.....	-	6.7	5.7	10.6	11.0	10.4	11.2	8.2	5.4	3.7
Last grade enrolled in school	2442	2647	2888	3158	3230	3410	3310	3450	3113	2256
Grades 1-9.....	16.9	15.0	20.2	16.2	15.8	18.4	17.6	19.4	20.9	20.5
Grade 10.....	25.5	24.7	26.6	25.8	26.2	26.2	28.6	26.9	27.5	30.9
Grade 11.....	31.5	31.0	32.4	35.6	35.8	35.5	33.0	33.8	32.7	32.0
Grade 12.....	16.5	18.1	11.3	13.2	14.2	13.9	14.2	13.1	12.9	15.5
H. S. grad. or college.....	9.6	11.2	9.5	9.2	8.0	6.0	6.6	6.8	6.0	1.1
Reading comprehension (mean grade level).....	8.0	8.2	6.9	7.0	7.0	7.0	6.8	6.8	6.9	6.9
Arithmetic reasoning (mean grade level).....	5.9	6.0	6.5	6.6	6.7	6.7	6.6	6.5	6.4	6.6
Prior convictions or sustained petitions <sup>a</sup> /.....	2521	2780	3037	3309	3423	3582	3437	3712	3530	2743
None.....	4.4	5.4	5.0	7.0	6.8	12.6	13.7	15.4	19.6	21.1
1-4.....	17.5	25.6	27.2	30.4	30.1	55.8	61.3	60.4	61.2	59.0
5-7.....	43.8	21.7	22.5	20.9	22.7	20.5	19.1	18.3	14.1	15.1
8 or more.....	34.3	47.3	45.3	41.7	40.4	11.1	5.9	5.9	5.1	4.8
Median age at first prior conviction or petition <sup>a</sup> /.....	14.0	13.9	13.9	14.2	14.0	14.7	14.9	14.9	14.9	14.7
Prior commitments.....	2520	2780	3037	3309	3423	3582	3437	3712	3530	2743
None.....	46.9	47.5	42.5	42.8	37.2	36.6	34.1	38.3	44.1	45.1
One.....	30.7	29.8	33.4	30.3	31.8	31.2	31.1	29.9	28.0	24.5
Two.....	14.8	14.0	15.0	16.1	17.3	19.7	20.4	17.7	15.2	16.7
Three or more.....	7.6	8.7	9.1	10.8	13.7	12.5	14.4	14.1	12.7	13.7
Median age at first prior commitment.....	16.3	15.9	15.9	16.0	15.7	15.5	15.6	15.7	15.6	15.2

<sup>a</sup>/ Definition changed in 1978. Formerly titled Prior Delinquent Contacts.

TABLE 2 (Continued)

CHARACTERISTICS OF FIRST COMMITMENTS TO THE YOUTH AUTHORITY, 1973-1982  
(Showing percents of totals)

## Males Only

Characteristics	1973	1974	1975	1976	1977	1978	1979	1980	1981	1982
I-Level.....	2251	2614	2359	2781	2702	2757	2722	2542	2559	1955
I-2.....	7.8	8.1	10.7	9.5	9.7	8.1	8.8	11.1	11.5	12.1
I-3.....	51.7	52.5	55.0	54.5	58.3	59.7	61.5	55.3	56.6	59.6
I-4 and I-5.....	40.5	39.4	34.3	36.0	32.0	32.2	29.7	33.6	31.9	28.3
Religion.....	2124	2230	2397	2582	2732	2812	2097	2196	2482	2069
Catholic.....	43.4	45.7	46.9	47.3	45.2	48.4	46.3	46.4	45.9	43.9
Protestant.....	54.3	53.1	51.0	51.0	53.0	49.0	52.8	53.4	53.9	55.9
Other.....	2.3	1.2	2.1	1.7	1.8	2.6	0.9	0.2	0.2	0.2
Major problem area.....	-	2270	2615	2596	2737	2902	2612	2765	2600	2197
None.....	-	1.3	1.3	1.6	1.3	1.0	0.6	1.4	0.9	0.4
Employment.....	-	7.7	7.3	7.8	6.1	5.5	5.2	6.4	6.5	4.6
Family.....	-	11.4	8.4	6.9	8.4	8.4	7.3	6.9	6.4	7.7
School.....	-	4.0	3.4	3.3	3.3	2.8	2.5	2.7	2.5	2.2
Drugs/alcohol.....	-	16.2	14.2	14.2	14.2	13.9	15.3	15.2	13.8	11.3
Peer influence.....	-	38.8	43.4	42.3	43.0	42.4	41.8	40.3	44.0	48.0
Mental/emotional.....	-	20.6	22.3	23.9	23.7	26.0	27.3	27.1	25.9	25.8
Employment.....	-	2360	2714	2691	2871	3033	2685	2758	2676	2256
Not in job market.....	-	35.1	36.8	33.3	35.6	32.0	32.6	32.6	31.3	38.7
Unemployed.....	-	38.7	42.1	46.4	44.3	45.7	43.8	45.5	46.1	44.4
Employed part-time.....	-	13.9	12.8	12.1	10.4	11.9	12.5	9.3	13.9	11.2
Employed full-time.....	-	12.3	8.3	8.2	9.7	10.4	11.1	12.6	8.7	5.7
Placement before commitment..	-	2365	2759	2732	2897	3051	2692	2788	2711	2290
Parents.....	-	74.0	74.1	73.3	74.1	74.7	73.8	74.8	75.3	77.0
Relatives.....	-	9.0	9.3	9.5	8.7	9.3	9.8	10.2	8.1	9.0
Foster/group home.....	-	4.9	4.8	4.5	6.2	6.2	4.9	4.9	5.9	5.9
Independent.....	-	12.1	11.8	12.7	11.0	9.8	11.5	10.1	10.7	8.1
Out-of-home placements.....	-	2253	2608	2578	2666	2858	2496	2625	2517	2123
None.....	-	67.8	68.9	68.7	64.6	65.8	64.4	64.0	65.1	65.4
One.....	-	16.1	16.6	15.8	16.9	15.4	16.0	16.9	16.4	15.4
Two or more.....	-	16.1	14.5	15.5	18.5	18.8	19.6	19.1	18.5	19.2



TABLE 2 (Continued)

CHARACTERISTICS OF FIRST COMMITMENTS TO THE YOUTH AUTHORITY, 1973-1982  
(Showing percents of totals)

## Males Only

Characteristics	1973	1974	1975	1976	1977	1978	1979	1980	1981	1982
Parental configuration.....	-	2387	2774	2755	2928	3079	2718	2877	2742	2884
No parents in home.....	-	6.1	4.6	5.5	6.3	5.7	5.7	5.7	5.41	4.2
One-parent home.....	-	40.7	44.0	47.5	46.3	45.9	61.7	61.7	62.3	39.0
Two-parent home.....	-	53.2	51.4	47.0	47.4	48.4	32.6	32.6	32.3	56.8
Parents' marital status.....	2481	2755	2963	3258	3348	3468	3349	3404	2900	2361
Never married.....	3.8	7.6	5.5	6.3	8.7	9.8	12.5	11.6	13.0	11.2
Presently married.....	31.1	35.1	33.6	32.3	30.0	30.1	28.1	26.1	26.0	22.1
No longer married.....	65.1	57.3	60.9	61.4	61.3	60.1	59.4	62.3	61.0	66.7
Income level of home.....	-	2333	2692	2658	2750	2952	2613	2716	2591	2206
Less than adequate.....	-	40.9	43.3	43.8	46.0	42.5	42.6	43.3	42.9	46.9
Adequate.....	-	52.5	52.3	51.9	49.8	53.4	52.5	52.9	52.5	50.1
More than adequate.....	-	6.6	4.4	4.3	4.2	4.1	4.9	3.8	4.6	3.0
Family income from public assistance.....	-	2265	2576	2573	2646	2822	2481	2551	2472	2119
None.....	-	66.3	62.8	62.9	61.0	63.3	63.3	62.9	64.6	62.1
Less than half.....	-	8.1	10.1	8.7	8.9	9.3	9.5	9.7	8.6	8.5
More than half.....	-	25.6	27.1	28.4	30.1	27.4	27.2	27.4	26.8	29.4
Criminal record of family members.....	-	2122	2484	2434	2526	2717	2412	2475	2366	2025
None.....	-	52.2	50.5	51.9	49.1	47.8	46.0	46.7	47.9	48.6
Parents only.....	-	9.6	8.5	7.8	7.8	7.5	9.2	8.9	8.0	10.4
Siblings only.....	-	29.0	32.5	33.1	34.9	34.4	34.2	32.2	32.2	29.3
Both.....	-	9.2	8.5	7.2	8.2	10.3	10.6	12.2	11.9	11.7
Economic aspects of immediate neighborhood.....	-	2345	2706	2693	2827	2997	2648	2741	2620	2230
Above average.....	-	7.8	7.1	7.1	6.3	6.3	7.9	7.4	6.1	5.1
Average.....	-	47.8	50.3	50.2	50.4	51.5	47.8	48.6	47.6	48.5
Below average.....	-	44.4	42.6	42.7	43.3	42.2	44.3	44.0	46.3	46.4
Delinquency aspects of immediate neighborhood.....	-	2330	2683	2662	2820	2992	2634	2685	2633	2210
Nondelinquent.....	-	8.5	6.3	6.5	5.5	5.8	6.6	6.9	6.7	5.0
Minimally delinquent.....	-	26.7	25.2	25.3	22.4	24.5	25.4	23.5	21.9	24.0
Moderately delinquent.....	-	35.4	36.9	36.3	39.4	37.8	36.2	34.7	36.0	35.5
Highly delinquent.....	-	29.4	31.6	31.9	32.7	31.9	31.8	34.9	35.4	35.5

Note: Unless indicated differently, responses coded as unknown were removed from each item thus accounting for differing totals.

TABLE 3

CHARACTERISTICS OF FIRST COMMITMENTS TO THE YOUTH AUTHORITY, 1973-1982  
(Showing percents of totals)

## Females Only

Characteristics	1973	1974	1975	1976	1977	1978	1979	1980	1981	1982
Total first admissions.....	223	212	180	182	169	162	153	154	169	160
Court.....	223	212	180	182	169	162	153	154	169	160
Juvenile.....	75.3	75.5	63.9	66.5	54.5	70.4	66.7	65.6	68.0	76.3
Criminal.....	24.7	24.5	36.1	33.5	35.5	29.6	33.3	34.4	32.0	23.7
Area of commitment.....	223	212	180	182	169	162	153	154	169	160
Southern California.....	62.3	45.8	59.4	48.4	47.3	51.2	50.3	57.8	50.9	39.4
Los Angeles.....	28.2	18.9	23.9	24.7	18.9	24.1	26.1	39.6	31.4	33.8
9 other counties.....	34.1	26.9	35.5	23.7	28.4	27.1	24.2	18.2	19.5	5.6
San Francisco Bay area.....	21.5	23.1	21.7	24.7	29.0	29.6	25.5	17.5	30.8	25.0
Sacramento Valley.....	5.4	13.2	6.7	11.5	4.7	4.9	8.5	3.3	6.5	4.4
San Joaquin Valley.....	6.7	9.4	8.9	9.3	11.3	8.7	9.8	14.3	8.3	11.3
22 other counties.....	4.2	8.5	3.3	6.1	7.7	5.6	5.9	7.1	3.5	6.9
Commitment offense.....	223	212	180	182	169	162	153	154	169	160
Violent type offenses.....	25.6	26.4	44.5	45.0	51.5	54.9	58.1	55.8	44.4	45.6
Property type offenses.....	19.3	26.4	27.2	33.0	32.0	37.0	35.3	36.4	45.0	31.3
Narcotic & drug offenses	13.0	15.6	9.4	9.9	7.7	3.1	3.3	3.9	4.1	5.0
W & I Code violations.....	32.7	27.4	12.8	6.6	4.1	1.9	-	-	-	-
Other offenses.....	9.4	4.2	6.1	5.5	4.7	3.1	3.3	3.9	6.5	18.1
Ethnic group.....	223	212	180	182	169	162	153	154	169	160
White.....	48.9	57.6	40.0	43.4	36.1	49.4	44.4	38.9	38.5	46.9
Hispanic.....	15.2	14.6	20.6	19.8	25.5	19.7	30.1	29.9	21.3	17.5
Black.....	31.4	24.5	36.1	32.4	34.3	28.4	20.3	27.3	37.3	32.5
Other.....	4.5	3.3	3.3	4.4	4.1	2.5	5.2	3.9	2.9	3.1
Median age.....	16.9	16.9	17.0	17.5	17.5	17.3	17.4	17.3	17.5	16.9
Number of escapes.....	223	212	180	182	169	162	153	154	169	160
None or unknown.....	82.5	80.3	83.3	78.6	88.2	91.4	85.6	81.2	85.2	78.8
One or more.....	17.5	19.8	16.7	21.4	11.8	8.6	14.4	18.8	14.8	21.2
Co-offenders.....	223	212	180	182	169	162	153	154	169	160
None or unknown.....	66.8	58.0	56.7	53.3	55.0	56.2	44.4	56.5	59.8	53.8
One or two.....	28.3	33.0	31.7	39.6	38.5	35.2	43.8	34.4	33.7	36.2
Three or more.....	4.9	9.0	11.6	7.1	6.5	8.6	11.8	9.1	6.5	10.0
Weapons with offense.....	223	212	180	182	169	162	153	154	169	160
None or unknown.....	78.9	76.9	71.1	73.1	68.6	64.8	54.9	53.2	72.2	63.8
Yes.....	21.1	23.3	28.3	26.9	31.4	35.2	45.1	46.8	27.8	36.2

TABLE 3 (Continued)  
CHARACTERISTICS OF FIRST COMMITMENTS TO THE YOUTH AUTHORITY, 1973-1982  
(Showing percents of totals)

Females Only

Characteristics	1973	1974	1975	1976	1977	1978	1979	1980	1981	1982
Physical handicaps.....	-	212	180	182	169	162	153	154	169	160
None or unknown.....	-	93.8	96.6	90.7	93.5	87.7	82.4	50.0	61.5	96.9
Yes.....	-	6.2	3.4	9.3	6.5	12.3	17.6	50.0	38.5	3.1
Last grade enrolled in school	217	198	159	147	169	157	143	98	107	102
Grades 1-9.....	30.9	26.3	21.4	21.8	27.5	36.3	32.8	30.6	31.8	37.3
Grade 10.....	21.2	26.3	27.0	32.0	30.8	25.5	30.8	32.7	28.0	37.3
Grade 11.....	29.5	28.3	33.3	23.1	23.1	21.0	24.5	23.5	22.4	16.7
Grade 12.....	12.0	11.6	12.6	13.6	14.1	8.9	9.1	6.1	12.2	7.8
H. S. grad or college.....	6.4	7.5	5.7	9.5	4.5	8.3	2.8	7.1	5.6	0.9
Reading comprehension (mean grade level).....	8.0	7.8	6.8	7.3	6.9	7.3	6.9	6.5	6.9	6.8
Arithmetic reasoning (mean grade level).....	6.3	5.8	6.3	6.8	6.3	6.7	6.6	6.5	6.9	6.6
Prior convictions or sustained petitions <sup>a</sup> /.....	222	211	168	159	167	161	151	150	144	148
None.....	5.0	7.1	10.1	13.8	11.9	36.0	33.8	26.7	20.1	20.3
1-4.....	21.2	28.4	35.7	34.6	41.3	48.4	55.6	54.7	66.7	55.4
5-7.....	39.6	24.7	22.0	20.8	18.6	8.1	8.6	14.0	8.3	16.9
8 or more.....	34.2	39.8	32.2	30.8	28.2	7.5	2.0	4.6	4.9	7.4
Median age at first prior conviction or petition <sup>a</sup> /.....	13.9	13.8	14.1	14.0	14.2	15.0	14.9	14.5	15.1	14.2
Prior commitments.....	222	211	168	159	167	161	151	150	144	148
None.....	71.2	63.0	57.1	60.4	56.3	57.1	60.3	58.0	55.6	64.9
One.....	18.9	23.2	24.4	24.5	21.5	24.2	19.2	28.0	25.7	21.6
Two.....	6.8	6.7	12.5	9.4	10.2	10.6	15.2	7.3	9.0	8.1
Three or more.....	3.1	7.1	6.0	5.7	12.0	8.1	5.3	6.7	9.7	5.4
Median age at first prior commitment.....	15.4	15.0	15.2	14.9	14.7	16.4	14.9	15.3	15.6	14.8

<sup>a</sup>/ Definition changed in 1978. Formerly titled Prior Delinquent Contacts.

TABLE 3 (Continued)  
CHARACTERISTICS OF FIRST COMMITMENTS TO THE YOUTH AUTHORITY, 1973-1982  
(Showing percents of totals)

Females Only

Characteristics	1973	1974	1975	1976	1977	1978	1979	1980	1981	1982
I-Level.....	173	188	113	74	93	92	79	126	107	86
I-2.....	3.5	6.3	10.6	2.7	15.1	11.9	13.9	15.1	7.4	23.3
I-3.....	42.2	30.9	52.2	55.4	43.0	51.1	40.5	44.4	56.1	41.9
I-4 and I-5.....	54.3	62.8	37.2	41.9	41.9	37.0	45.6	40.5	36.5	34.8
Religion.....	190	174	153	143	117	123	64	46	-	7
Catholic.....	35.8	42.0	43.1	38.5	46.1	45.5	53.1	47.8	-	-
Protestant.....	62.6	55.7	53.6	58.7	49.6	49.6	40.6	52.2	-	100.0
Other.....	1.6	2.3	3.3	2.8	4.3	4.9	6.3	-	-	-
Major problem area.....	-	186	138	145	135	127	121	122	118	121
None.....	-	-	-	1.4	1.5	0.8	0.8	3.3	0.8	-
Employment.....	-	0.5	1.4	0.7	2.2	1.6	3.3	2.5	3.4	0.8
Family.....	-	21.0	8.7	8.9	9.6	10.2	12.4	12.3	11.0	10.7
School.....	-	1.6	1.4	2.1	3.0	2.4	1.7	2.5	-	-
Drugs/alcohol.....	-	23.1	14.5	20.0	17.0	15.7	13.2	16.4	16.1	11.6
Peer influence.....	-	25.3	34.1	27.6	38.5	24.4	26.4	27.0	31.4	34.7
Mental/emotional.....	-	28.5	39.9	39.3	28.2	44.9	42.2	36.0	37.3	42.2
Employment.....	-	187	143	149	140	133	116	117	118	125
Not in job market.....	-	55.1	54.5	51.0	51.4	49.6	44.0	40.1	47.5	63.2
Unemployed.....	-	34.8	38.5	39.6	41.4	44.4	41.4	49.6	41.5	29.6
Employed part-time.....	-	6.9	4.2	4.7	2.9	3.8	7.7	4.3	5.1	4.8
Employed full-time.....	-	3.2	2.8	4.7	4.3	2.2	6.9	6.0	5.9	2.4
Placement before commitment..	-	183	145	149	136	135	117	111	120	121
Parents.....	-	60.1	60.0	56.4	61.8	57.0	53.9	59.5	48.3	58.7
Relatives.....	-	7.1	9.6	7.4	6.6	5.2	6.8	8.1	15.0	9.9
Foster/group home.....	-	20.8	15.2	17.4	13.2	16.3	15.4	14.4	16.7	15.7
Independent.....	-	12.0	15.2	18.8	18.4	21.5	23.9	18.0	20.0	15.7
Out-of-home placements.....	-	181	132	146	129	127	109	112	109	114
None.....	-	39.8	52.3	51.4	51.2	49.6	40.4	45.5	46.8	46.5
One.....	-	19.3	22.0	16.4	17.0	18.1	12.8	14.3	19.3	16.7
Two or more.....	-	40.9	25.7	32.2	31.8	32.3	46.8	40.2	33.9	36.8
Parental configuration.....	-	191	145	147	140	138	120	119	123	125
No parents in home.....	-	6.3	6.9	7.4	12.1	10.9	6.7	8.4	12.2	3.2
One-parent home.....	-	45.0	46.2	51.7	44.3	49.3	62.5	69.8	59.3	54.4
Two-parent home.....	-	48.7	46.9	40.8	43.6	39.8	30.8	21.8	28.5	42.4

TABLE 3 (Continued)

CHARACTERISTICS OF FIRST COMMITMENTS TO THE YOUTH AUTHORITY, 1973-1982  
(Showing percents of totals)

## Females Only

Characteristics	1973	1974	1975	1976	1977	1978	1979	1980	1981	1982
Parents' marital status.....	221	210	165	155	163	159	151	145	135	129
Never married.....	5.4	8.6	13.3	9.7	13.5	19.5	17.2	24.8	14.8	11.6
Presently married.....	16.7	26.2	23.0	21.9	23.9	25.8	25.2	15.2	18.5	19.4
No longer married.....	67.9	65.2	63.7	68.4	62.6	54.7	57.6	60.0	66.7	69.0
Income level of home.....	-	183	141	143	129	128	111	110	111	117
Less than adequate.....	-	43.2	52.5	51.0	53.5	50.0	45.9	46.4	42.3	42.7
Adequate.....	-	50.3	42.5	46.9	42.6	46.9	46.9	50.9	55.9	52.1
More than adequate.....	-	6.5	5.0	2.1	3.9	3.1	7.2	2.7	1.8	5.2
Family income from public assistance.....	-	178	137	133	127	122	105	103	106	112
None.....	-	63.5	56.9	55.6	51.2	58.2	60.0	47.6	60.4	59.8
Less than half.....	-	7.3	5.9	14.3	10.2	5.7	9.5	15.5	10.4	13.4
More than half.....	-	29.2	37.2	30.1	38.6	36.1	30.5	36.9	29.2	26.8
Criminal record of family members.....	-	177	132	134	126	121	110	100	93.0	109
None.....	-	46.4	44.7	45.5	46.0	39.7	38.2	43.0	41.9	47.7
Parents only.....	-	11.3	12.9	12.7	8.7	9.1	10.0	10.0	14.0	12.8
Siblings only.....	-	23.7	28.8	30.6	28.6	34.7	28.2	35.0	29.0	26.7
Both.....	-	18.6	13.6	11.2	16.7	16.5	23.6	12.0	15.1	12.8
Economic aspects of immediate neighborhood.....	-	178	142	143	136	126	112	114	120	119
Above average.....	-	11.2	9.8	4.2	7.4	1.6	6.3	5.2	10.0	12.6
Average.....	-	46.1	45.1	48.9	46.3	47.6	47.3	47.4	49.2	50.4
Below average.....	-	42.7	45.1	46.9	46.3	50.8	46.4	47.4	40.8	37.0
Delinquency aspects of immediate neighborhood.....	-	174	140	141	137	127	110	108	117	120
Nondelinquent.....	-	15.5	7.1	8.5	11.7	8.7	10.9	5.6	8.6	6.7
Minimally delinquent.....	-	29.9	23.6	22.7	17.5	24.4	30.0	26.8	24.8	32.5
Moderately delinquent.....	-	30.5	40.7	36.2	38.7	28.3	29.1	31.5	33.3	28.3
Highly delinquent.....	-	24.1	28.6	32.6	32.1	38.6	30.0	36.1	33.3	32.5

Note: Unless indicated differently, responses coded as unknown were removed from each item thus accounting for differing totals.

**END**