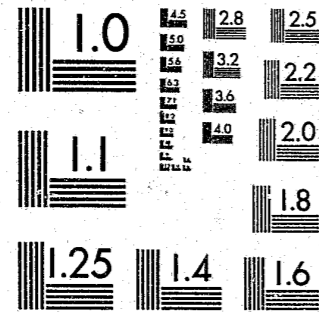


National Criminal Justice Reference Service

ncjrs

This microfiche was produced from documents received for inclusion in the NCJRS data base. Since NCJRS cannot exercise control over the physical condition of the documents submitted, the individual frame quality will vary. The resolution chart on this frame may be used to evaluate the document quality.



MICROCOPY RESOLUTION TEST CHART
NATIONAL BUREAU OF STANDARDS-1963-A

Microfilming procedures used to create this fiche comply with the standards set forth in 41CFR 101-11.504.

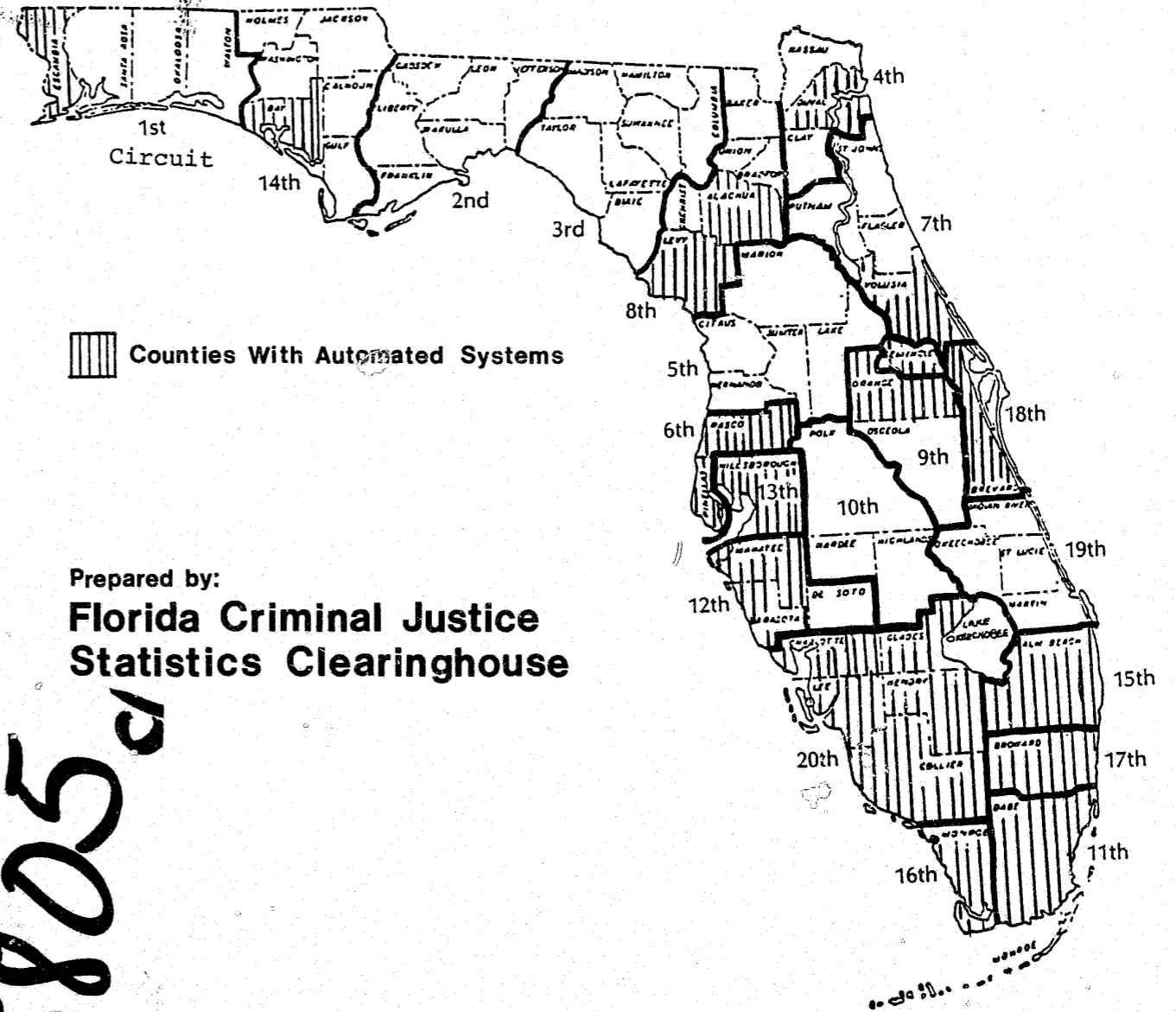
Points of view or opinions stated in this document are those of the author(s) and do not represent the official position or policies of the U. S. Department of Justice.

National Institute of Justice
United States Department of Justice
Washington, D. C. 20531

2/10/86

CR-507
2-12-85

1983 Florida Directory of Automated Criminal Justice Information Systems



Counties With Automated Systems

Prepared by:
**Florida Criminal Justice
Statistics Clearinghouse**

95805

Division of Criminal Justice Assistance
Department of Community Affairs

INTRODUCTION

This 1983 Florida Directory of Automated Criminal Justice Information Systems is intended to provide a basic knowledge of computerized information systems utilized by criminal justice agencies in Florida. It is anticipated that the Directory will serve as a current reference for individuals presently or anticipating involvement in the processing of criminal justice data and for those instrumental in planning for the future needs of criminal justice agencies. This information is also designed to encourage communication among developers and users of criminal justice data systems in jurisdictions throughout the state.

This Directory is prepared by staff of the Florida Criminal Justice Statistics Clearinghouse. The Clearinghouse is funded by the U.S. Department of Justice, Bureau of Justice Statistics and is located in the Department of Community Affairs, Division of Public Safety Planning and Assistance, Bureau of Criminal Justice Assistance. The Clearinghouse is a centralized resource to persons seeking criminal justice information of a statistical nature. The Clearinghouse has developed and continually expanded a library of national, state, and local documents relating to crime and criminal justice statistics since its inception in 1981.

This Directory is a product of a survey instrument (Appendix A) distributed to individuals in the criminal justice field associated with automated data systems. Approximately 45 questionnaires were mailed in May 1983 and 32 were completed and returned by July, 1983. The Clearinghouse recognizes that this Directory does not include every automated system in Florida due to non-responses by some agencies and our inability to identify every system in the State.

We are certainly hoping for a favorable response to this Directory in terms of its value to criminal justice personnel as a reference tool. If people in the field of criminal justice perceive this compilation of information as worthwhile, we would be inclined to update the Directory periodically. To determine if a positive evaluation of this Directory occurs and to solicit additional or more accurate information for possible future editions of this document, we have included an evaluation and information form on page 51. It is encouraged that you express your evaluation of the Directory and, if appropriate, provide us with any additional information about your criminal justice information system.

We would like to express our thanks to the many individuals who expended the time and effort to provide us with the information necessary to compile this Directory. We look forward to hearing from interested persons in the future. For more information pertaining to this Directory or the Florida Criminal Justice Statistics Clearinghouse contact:

William D. Bales
Florida Criminal Justice
Statistics Clearinghouse
2571 Executive Center Circle East
Tallahassee, FL 32301
(904) 488-0090

U.S. Department of Justice
National Institute of Justice

95805

This document has been reproduced exactly as received from the person or organization originating it. Points of view or opinions stated in this document are those of the authors and do not necessarily represent the official position or policies of the National Institute of Justice.

Permission to reproduce this copyrighted material has been granted by

Florida Criminal Justice
Statistics Clearinghouse

to the National Criminal Justice Reference Service (NCJRS).

Further reproduction outside of the NCJRS system requires permission of the copyright owner.

LIST OF DATA ELEMENTS

1. Jurisdiction - Name of jurisdiction which operates the system.
2. System Name - The name of the automated information system.
3. Code Name - The acronym or short name of the system.
4. Agency - The name of the agency responsible for operating and funding the system.
5. System Users - The criminal justice agencies which use the system.
6. Population Area Served - The estimated number of people served by the system.
7. Hardware - The type of computer and peripheral equipment used to make up the system.
8. Software - The programming languages used by the system.
9. Environment - Whether the system is dedicated to only the agency designated or shared with other agencies.
10. Starting Date - When the information system became operational.
11. Interface - A list of other automated information systems which the subject system interfaces.
12. Availability of Data - Whether data is available for research/statistical purposes and who to contact concerning the acquisition of data.
13. Narrative Description - A description of the information system in the words of a person associated with the computer system.
14. System Functions - The specific functions conducted by the system.
15. Processing Mode - The method used to communicate with the computer. Batch mode is when a block of data is sent and processed. On-line is a conversational mode of interaction with the computer.
16. Type of Agency Served - The specific agency associated with a given function.
17. Status - Whether each function is operating or in the planning stage.
18. Responsible Agency Contact - The name, address, and phone number of the person to contact for information about the agency.
19. Data Processing Contact - The name, address, and phone number of the person to contact concerning the data processing aspects of the information system.

TABLE OF CONTENTS

Note: There are four different indexing systems included in this based on location, name of the system, judicial circuit, and type of computer utilized.

	<u>Page</u>
I. LOCATION	
A. State Systems	
Tallahassee.....	1,2
Tallahassee.....	3,4
B. County Systems	
Alachua.....	5,6
Bay.....	7
Brevard.....	8
Broward.....	9
Charlotte.....	10
Collier.....	10,11,12
Dade.....	13,14
Duval.....	15,16,17, 18,19,20
Escambia.....	21,22
Glades.....	10
Hendry.....	10
Hillsborough.....	23
Lee.....	10
Levy.....	24
Manatee.....	25
Monroe.....	26,27
Orange.....	28
Palm Beach.....	29
Pasco.....	30,31
Pinellas.....	32,33
Sarasota.....	34
Seminole.....	35
Volusia.....	36,37
C. City Systems	
Gainesville.....	38
Miami.....	39,40,41,42
Pompano Beach.....	43
Sarasota.....	44,45
II. SYSTEM NAME	
Advanced Information Management for Law Enforcement (AIM).....	44,45
Alachua County Criminal Justice Information System (ACJIS).....	5,6
Brevard County Criminal Justice System (CJIS).....	8

	<u>Page</u>
Broward County Criminal Justice Information (BCCJIS).....	9
Clerk Civil (CC).....	20
Computer Aided Dispatch (CAD).....	39,40
Computer Aided Dispatch System (CADS).....	12
Computer Aided Report Entry (CAPE).....	41
Computer Assisted Dispatching (CAD).....	19
Criminal Court System (CCS).....	26
Criminal Justice Information System (CJIS).....	11,13,14,17,23 30,31,32,33
Criminal Justice System.....	10
De La Rue Printpack Computerized Fingerprint System (AFIS).....	42
Florida Crime Information Center (FCIC).....	1,2
Gainesville Local Area/Dispatch Information System (GLADES).....	38
Justice Information System (JUIS).....	28
Juvenile Justice Information System (JJIS).....	18
Law Enforcement Information System (LEIS).....	15,16
Morgan System.....	3,4
Offender Based Information System (OBIS).....	3,4
Palm Beach County Law Enforcement Management Information System (PALMS).....	29
Pinellas County Justice Information Systems (PCJIS).....	32,33
Police Operation Support System Elementary (POSSE).....	27
Pompano Automated Law Enforcement Data System (PALEDS).....	43
Prosecutor Management Information System (PROMIS).....	35
Sarasota County Arrest Retrieval Information System (SCARES).....	34
III. JUDICIAL CIRCUIT	
First	
Escambia County.....	21,22
Fourth	
Duval County.....	15,16,17, 18,19,20
Sixth	
Pasco County.....	30,31
Pinellas County.....	32,33
Seventh	
Volusia County.....	36,37
Eighth	
Alachua County.....	5,6
Gainesville, City of.....	38
Levy County.....	24
Ninth	
Orange County.....	28
Eleventh	
Dade County.....	13,14
Miami, City of.....	39,40,41,42

	<u>Page</u>
Twelfth	
Manatee County.....	25
Sarasota, City of.....	44,45
Sarasota County.....	34
Thirteenth	
Hillsborough County.....	23
Fourteenth	
Bay County.....	7
Fifteenth	
Palm Beach County.....	29
Sixteenth	
Monroe County.....	26,27
Seventeenth	
Broward County.....	9
Pompano Beach, City of.....	43
Eighteenth	
Brevard County.....	8
Seminole County.....	35
Twentieth	
Charlotte County.....	10
Collier County.....	10,11,12
Glades County.....	10
Hendry County.....	10
Lee County.....	10

IV. TYPE OF COMPUTER

Burroughs	
Brevard County.....	8
Duval County.....	15,16,17 18,19,20
Statewide (FCIC).....	1,2
Data General	
Monroe County.....	27
Hewlett Packard	
Sarasota, City of.....	44,45
IBM	
Alachua County.....	5,6
Broward County.....	9
Dade County.....	13,14
Escambia County.....	21,22
Palm Beach County.....	29
Pompano Beach, City of.....	43
Pasco County.....	30,31
Pinellas County.....	32,33
Statewide (OBIS).....	3,4
Volusia County.....	36,37
Modular Computer	
Hillsborough County.....	23
NCR	
Collier County.....	12
Manatee County.....	25
Monroe County.....	26

	<u>Page</u>
Nixdorf	
Bay County.....	7
Charlotte County.....	10
Collier County.....	10
Glades County.....	10
Lee County.....	10
Levy County.....	24
PDP	
Collier County.....	11
Gainesville, City of.....	38
Miami, City of.....	39,40,41,42
Texas Instrument	
Orange County.....	28
Seminole County.....	35
VCR	
Sarasota County.....	34

JURISDICTION.....STATEWIDE

SYSTEM NAME.....Florida Crime Information Center
CODE NAME.....FCIC

AGENCY.....Florida Department of Law Enforcement
SYSTEM USERS.....Law Enforcement, Courts, Corrections
POPULATION AREA SERVED.....10,000,000

HARDWARE.....Burroughs 4800 (X3) 3MB, 874 (X4) 96K, 565 terminals
SOFTWARE.....Cobol, Burroughs Programming Language (BPL)

ENVIRONMENT.....Dedicated
STARTING DATE.....October, 1971
INTERFACE.....NCIC, NLETS, DHSMV, DNR, 13 County/Municipal interfaces
AVAILABILITY OF DATA.....Yes, This information is available to bona fide criminal justice agencies with no restrictions. Reproduction fees and agreements for use of certain information are normally required when data is for non-criminal justice purposes

NARRATIVE DESCRIPTION:

The FCIC system provides point-to-point communications (in state and out-of-state), access to the stolen vehicle, stolen property, wanted/missing/criminal history persons files at the State and National levels. Also provided is access to state drivers license, vehicle registration and boat registration files. The information and message switching systems are supported by 3 Burroughs 4800 Medium systems, 4 Burroughs 874 Data Communication processors and 42 disk pack units providing approximately 3.4 billion bytes of random access storage. Information and communication capabilities provided to approximately 1800 terminals directly or indirectly thru local level computer interfaces. The FCIC central repository currently contains active records on 161,164 wanted persons, 4266 missing persons, 80,790 parole and probation statuses, 158,019 stolen vehicles, license plates or boats, 167,156 stolen guns or articles and 1,484,388 criminal histories.

*** SYSTEM FUNCTIONS ***

<u>FUNCTIONS</u>	<u>PROCESSING MODE</u>	<u>TYPE OF AGENCY SERVED</u>	<u>STATUS</u>
Arrests	Batch	All	Operational
Disposition Reporting	Batch	All	Operational
Comm. Processing			
Message Switching	On-line	All	Operational
Comm. Processing			
On-line Inquiry	On-line	All	Operational
Crime Trend Analysis	Batch	All	Operational
Criminal History (CCH)	Batch/On-line	All	Operational
Fingerprint Processing	Batch/On-line	All	Operational
Missing Persons	On-line	All	Operational
Parole/Probation			
Statuses	On-line	All	Operational

*** SYSTEM FUNCTIONS ***

<u>FUNCTIONS</u>	<u>PROCESSING MODE</u>	<u>TYPE OF AGENCY SERVED</u>	<u>STATUS</u>
Stolen Property-Guns	On-line	All	Operational
Stolen Property-Vehicles	On-line	All	Operational
Stolen Property-Articles	On-line	All	Operational
Stolen Property-Boats	On-line	All	Operational
Stolen Licenses-Tags	On-line	All	Operational
Uniform Crime Reporting	Batch	All	Operational
Victim Data Collection	Batch	All	Operational
Warrants/Wanted Persons	On-line	All	Operational

RESPONSIBLE AGENCY CONTACT:
Patrick J. Doyle
Division Director
Florida Department of Law Enforcement
P.O. Box 1489
Tallahassee, FL 32302
904/488-3961

DATA PROCESSING CONTACT:
Ritchie W. Grant
Data Center Director
Florida Department of Law Enforcement
P.O. Box 1489
Tallahassee, FL 32302
904/488-6041

JURISDICTIONSTATEWIDE

SYSTEM NAME.....Offender Based Information System

CODE NAME.....OBIS

AGENCY.....Florida Department of Corrections

SYSTEM USERS.....Corrections

POPULATION AREA SERVED.....10,375,332; 28,000 inmates; 70,000 probationers/parolees

HARDWARE.....IBM 4341 SMEG, 236 terminals

SOFTWARE.....Cobol, Assembler, Mark IV

ENVIRONMENT.....Shared with other criminal justice information system, Florida Supreme Court, Office of the State Courts Administrator

STARTING DATE.....July, 1978

INTERFACE.....None

AVAILABILITY OF DATA...Yes, All limitations of federal security and privacy act apply as well as Florida statutes

NARRATIVE DESCRIPTION:

The system tracks offenders from probation through incarceration and parole to eventual termination. It calculates release dates from prison and scheduled termination dates for parole and probation. Sentence structure is maintained along with gain time awards and loss of gain time. There is also an accounts receivable system for offenders on parole and probation who are required to pay a monthly fee for cost of supervision.

* * * SYSTEM FUNCTIONS * * *

<u>FUNCTION</u>	<u>PROCESSING MODE</u>	<u>TYPE OF AGENCY SERVED</u>	<u>STATUS</u>
Data Entry	On-line	Corrections	Operational
Inquiry	On-line	Corrections	Operational
Inmate Population Acc.	On-line/Batch	Corrections	Operational
Inmate Records	On-line	Corrections	Operational
P & P Population Acc.	On-line/Batch	Corrections	Operational
Caseload by Officer	On-line Print Out	Corrections	Operational
Circuit Alpha	On-line Print Out	Corrections	Operational
Release Date Calculation	On-line	Corrections	Operational
Scheduled Termination Date Case	On-line	Corrections	Operational
Movement Recording	On-line	Corrections	Operational
COS Billing & Collection	On-line	Corrections	Operational
Message Routing	On-line	Corrections	Operational
Demographic Data Recording	On-line	Corrections	Operational
Also a variety of mgt. reports are produced which serve the information needs of all levels of management	Batch	Corrections	Operational

RESPONSIBLE AGENCY CONTACT:
 Lonnie Fouty, Research & Statistics Administrator
 Florida Department of Corrections
 1311 Winewood Blvd.
 Tallahassee, FL 32301
 904/488-6316

DATA PROCESSING CONTACT:
 R.L. Ferrarè, Chief
 Bureau of Management Information Systems
 Department of Corrections
 1311 Winewood Blvd.
 Tallahassee, FL 32301
 904/488-6316

JURISDICTION.....ALACHUA COUNTY
 SYSTEM NAME.....Alachua County Criminal Justice Information System
 CODE NAME.....ACJIS
 AGENCY.....Alachua County Data Processing Department
 SYSTEM USERS.....Law Enforcement, Courts, Corrections, State Attorney
 POPULATION AREA SERVED.....127,000
 HARDWARE.....IBM 370, 30 terminals
 SOFTWARE.....Cobol, Fortran, Assembler, ADMINS
 ENVIRONMENT.....Shared with other criminal justice and government
 STARTING DATE.....January, 1974
 INTERFACE.....FCIC, NCIC Planned
 AVAILABILITY OF DATA.....Yes, for criminal justice agencies only

NARRATIVE DESCRIPTION:

Intergrated criminal justice information system that tracks an offender from time arrested until court disposition. System also has a name/location program for utility users on the Regional Utilities System (Gainesville).

*** SYSTEM FUNCTIONS ***

<u>FUNCTION</u>	<u>PROCESSING MODE</u>	<u>TYPE OF AGENCY SERVED</u>	<u>STATUS</u>
Address Index	Not Reported	All	Operational
Arrests	Not Reported	All	Operational
Assignment - Attorneys	Not Reported	All	Operational
Assignment - Courtrooms	Not Reported	All	Operational
Assignment - Judges	Not Reported	All	Operational
Calendarng/ Scheduling	Not Reported	All	Operational
Case Control	Not Reported	All	Operational
Case Disposition Reporting	Not Reported	All	Operational
Courts Personnel Records	Not Reported	All	Operational
Criminal History (CCH)	Not Reported	All	Operational
Custody/Bond Status	Not Reported	All	Operational
Docketing	Not Reported	All	Operational
Inmate Population Accounting	Not Reported	All	Operational
Inmate Records	Not Reported	All	Operational
Jail Information System (JIS)	Not Reported	All	Operational

*** SYSTEM FUNCTIONS ***

<u>FUNCTION</u>	<u>PROCESSING MODE</u>	<u>TYPE OF AGENCY SERVED</u>	<u>STATUS</u>
Prosecution Management Inform. System(PROMIS)	Not Reported	All	Operational
Speedy Trial	Not Reported	All	Operational
Warrant Control	Not Reported	All	Operational
Warrants/Wanted Persons	Not Reported	All	Operational

RESPONSIBLE AGENCY CONTACT:
 Lieutenant David Cowart
 Gainesville Police Dept.
 P.O. Box 1250
 Gainesville, FL 32602
 904/374-2453

DATA PROCESSING CONTACT:
 Jim Devel
 Alachua County Data Processing Dept.
 601 SW 2nd Ave.
 Gainesville, FL 32602
 904/376-1232

JURISDICTION.....BAY COUNTY
 SYSTEM NAME.....Not given
 CODE NAME.....Not given
 AGENCY.....Clerk of Circuit Court
 SYSTEM USERS.....Courts
 POPULATION AREA SERVED.....100,000
 HARDWARE.....Nixdorf 600/55; 16 M; 23 terminals
 SOFTWARE.....Editor
 ENVIRONMENT.....Shared with other government information systems
 STARTING DATE.....January, 1983
 INTERFACE.....None
 AVAILABILITY OF DATA.....Yes, upon approval by administrative judge

NARRATIVE DESCRIPTION:

This system maintains all court dockets, indexes, and prepares trial calendars, as well as jury selection, and venire preparation. Subsidiary ledgers of fines and forfeitures are maintained including receipting and undating of status for probation and parole personnel. All official records, child support payments and enforcement of child support are maintained. In addition to the above being maintained on-line, the county finance and other county functions are operated on-line ready access.

The Sheriff of Bay County is anticipated to install a criminal justice system in the near future that will be interfaced with the court system.

*** SYSTEM FUNCTIONS ***

<u>FUNCTION</u>	<u>PROCESSING MODE</u>	<u>TYPE OF AGENCY SERVED</u>	<u>STATUS</u>
Admins./Finance	On-line	Courts	Operational
Calendar/			
Scheduling	On-line	Courts	Operational
Family Support	On-line	Courts	Operational
Docketing -			
Circuit Criminal	On-line	Courts	Operational
Fine and Forfeiture	On-line	Courts	Operational
Jury Selection and Management	On-line	Courts	Operational
Trust Accounting	On-line	Courts	Planned
Civil - Index	On-line	Courts	Planned
Juvenile Index	On-line	Courts	Planned

RESPONSIBLE AGENCY CONTACT:
 Charles Allen
 Clerk of the Circuit Court
 Bay County
 P.O. Box 2269
 Panama City, FL 32402
 904/763-9061

DATA PROCESSING CONTACT:
 Same

JURISDICTION.....BREVARD COUNTY
 SYSTEM NAME.....Brevard County Criminal Justice System
 CODE NAME.....CJIS
 AGENCY.....Brevard County Clerks Office
 SYSTEM USERS.....Law Enforcement, Courts, Corrections
 POPULATION AREA SERVED.....300,000
 HARDWARE.....Burroughs B185S 1028K, 35 terminals
 SOFTWARE.....Cobol
 ENVIRONMENT.....Dedicated
 STARTING DATE.....August, 1982
 INTERFACE.....None
 AVAILABILITY OF DATA.....Yes, Limitations not reported

NARRATIVE DESCRIPTION:

Basic tracking of events from incident through court disposition if any. Analysis of types of incident throughout county. MO & crime analysis programs under development. Court and State Attorney processes under development.

*** SYSTEM FUNCTIONS ***

<u>FUNCTION</u>	<u>PROCESSING MODE</u>	<u>TYPE OF AGENCY SERVED</u>	<u>STATUS</u>
Activity reporting	On-line	Law Enforcement	Operational
Alphabetic Index	On-line	All	Operational
Arrests	On-line	All	Operational
Case Disposition	On-line/Batch	All	Operational
On-line Inquiry	On-line	All	Operational
Crime Trends	On-line/Batch	Law Enforcement	Development
Docketing	On-line	Courts	Planned
Evidence Control	On-line	All	Planned
Field Contact			
Reporting	On-line	Law Enforcement	Operational
Jail Management	On-line	Corrections	Operational
Modus Operandi	On-line	Law Enforcement	Development
Performance Eval.	On-line/Batch	Law Enforcement	Operational
Stolen Property	On-line	Law Enforcement	Operational
Pawnshops	On-line	Law Enforcement	Operational
Traffic	On-line	All	Planned
UCR	On-line	Law Enforcement	Operational

RESPONSIBLE AGENCY CONTACT:
 Wayne McClellan
 Data Systems Manager
 Brevard County Clerks Office
 400 South Street
 Titusville, FL 32780
 305/269-8142

DATA PROCESSING CONTACT:
 Same

JURISDICTION.....BROWARD COUNTY
 SYSTEM NAME.....Broward County Criminal Justice Information System
 CODE NAME.....B.C.C.J.I.S.
 AGENCY.....ourt Administrator
 SYSTEM USERS.....Law Enforcement, Courts, Corrections
 POPULATION AREA SERVED.....1 million
 HARDWARE.....IBM 3031, 150 terminals
 SOFTWARE.....Cobol, Assembler
 ENVIRONMENT.....Shared with other government information systems
 STARTING DATE.....December, 1972
 INTERFACE.....Dedicated
 AVAILABILITY OF DATA.....No response

NARRATIVE DESCRIPTION:
 The system captures information on subjects at time of booking and tracks the court case to final disposition.

*** SYSTEM FUNCTIONS ***

FUNCTION	PROCESSING MODE	TYPE OF AGENCY SERVED	STATUS
Arrests	On-line	Not Reported	Operational
Assignment Judges	On-line	Not Reported	Operational
Case Control	On-line/Batch	Not Reported	Operational
Custody Information	On-line/Batch	Not Reported	Operational
Docketing	On-line/Batch	Not Reported	Operational
Fine Processing	On-line/Batch	Not Reported	Operational
Jail Population	On-line/Batch	Not Reported	Operational
Jury Selection	Batch	Not Reported	Operational
Subject-in-Process	On-line/Batch	Not Reported	Operational
Traffic	On-line/Batch	Not Reported	Operational

RESPONSIBLE AGENCY CONTACT:
 Ms. Carol Ortman
 Court Administrator
 201 SE 6th Street
 Room 880B
 Ft. Lauderdale, FL 33301
 305/765-5247

DATA PROCESSING CONTACT:
 Mr. Dan Bailey
 Broward County Courthouse
 201 SE 6th Street
 Ft. Lauderdale, FL 33301
 305/765-5247

JURISDICTION.....LEE, CHARLOTTE, COLLIER, GLADES, HENDRY COUNTIES
 SYSTEM NAME.....Criminal Justice System
 CODE NAME.....Not available
 AGENCY.....Lee County Clerk's Office
 SYSTEM USERS.....Courts, Corrections, Dept. of Health and Rehab. Services
 POPULATION AREA SERVED.....200,000
 HARDWARE.....Nixdorf 600/55; 64 K; 32 terminals
 SOFTWARE.....Editor
 ENVIRONMENT.....Shared with other government information systems
 STARTING DATE.....January, 1980
 INTERFACE.....None
 AVAILABILITY OF DATA.....Yes, by authority of the clerk

NARRATIVE DESCRIPTION:
 This system indexes felony, misdemeanor, juvenile, and probate with court calendars and docketing. It also provides child support payment history. All criminal court functions (except juvenile) are inquired on by the State Attorney. DHRS inquires on child support. Clerk is responsible for fine collection on misdemeanors, traffic, cost of supervision, and public defender fees.

*** SYSTEM FUNCTIONS ***

FUNCTION	PROCESSING MODE	TYPE OF AGENCY SERVED	STATUS
Administration/ Finance	On-line/Batch	Clerk Accounting	Operational
Calendaring/ Scheduling	On-line	Courts	Operational
Case Control	On-line	Courts	Operational
Case Disposition	On-line	Courts	Operational
Child Support	On-line	DHRS, Courts	Operational
Citation Control	On-line	Courts	Operational
Criminal History	On-line	Courts	Operational
Docketing	On-line	Courts	Operational
Jury Payroll	On-line	Jury Supervisor	Operational
Juvenile Index	On-line	Juvenile Courts	Operational
Juvenile Records	On-line	Juvenile Courts	Operational
Probation Control	On-line	Clerk, Probation	Operational

RESPONSIBLE AGENCY CONTACT:
 Sal Geraci, Clerk
 Lee County Clerk's Office
 2115 Second Street
 P.O. Box 2469
 Fort Myers, FL 33902
 813/335-2263

DATA PROCESSING CONTACT:
 Barry Hafele, Manager
 Data Systems
 2115 Second Street
 P.O. Box 2469
 Fort Myers, FL 33902
 813/335-2263

JURISDICTION.....COLLIER COUNTY
 SYSTEM NAME.....Criminal Justice Information System
 CODE NAME.....CJIS
 AGENCY.....Collier County Data Processing
 SYSTEM USERS.....Law Enforcement, Courts
 POPULATION AREA SERVED.....99,027
 HARDWARE.....DEC PDP 11/70; 1 MB Memory; 3 disk each 175 M; 28 terminals
 SOFTWARE.....Cobol, Basic, Assembler
 ENVIRONMENT.....Shared with juvenile and civil departments
 STARTING DATE.....June, 1980
 INTERFACE.....None
 AVAILABILITY OF DATA.....Yes, if no law restriction, providing all cost and expenses for hardware/software and time used paid by user

NARRATIVE DESCRIPTION:

The CJIS creates, updates, modifies, and deletes cases. Court dockets, subpoenas, and summons are generated. Statistical reports of filed and disposed cases are produced. Searches of cases are conducted by case number, defendant, judge, and plaintiff. Full docket book applicator package (EDP designed) of entering docket lines, corrections, printing docket book.

*** SYSTEM FUNCTIONS ***

FUNCTION	PROCESSING MODE	TYPE OF AGENCY SERVED	STATUS
Activity Reporting	On-line	Courts	Operational
Arrests	On-line	Law Enformt, Courts	Operational
Alimony Control	On-line	Courts	Operational
Assignment - Attorneys	On-line	Courts	Operational
Assignment - Courtrooms	On-line	Courts	Operational
Assignment - Judges	On-line	Courts	Operational
Calendaring	On-line	Courts	Operational
Summon Control	On-line	Law Enformt, Courts	Operational
Warrant Control	On-line	Law Enformt, Courts	Operational
Witness Control	On-line	Law Enformt, Courts	Operational

RESPONSIBLE AGENCY CONTACT:
 William Reagan,
 Clerk of the Circuit Court
 Collier County Courthouse
 3301 Tamiami Trail, East
 Naples, FL 33962
 813/774-8301

DATA PROCESSING CONTACT:
 Hatam Hatamzadeh
 Systems Analyst
 EDP/CJIS Division
 3301 Tamiami Trail, East
 Naples, FL 33962
 813/774-8339

JURISDICTION.....COLLIER COUNTY
 SYSTEM NAME.....Computer Aided Dispatch System
 CODE NAME.....CADS
 AGENCY.....Collier County Sheriff's Department
 SYSTEM USERS.....Law Enforcement, Corrections
 POPULATION AREA SERVED.....Not given
 HARDWARE.....NCR 8535 11; 1 M; 5 terminals
 SOFTWARE.....Cobol, Neat 3
 ENVIRONMENT.....Dedicated
 STARTING DATE.....May, 1983
 INTERFACE.....None
 AVAILABILITY OF DATA.....No response

NARRATIVE DESCRIPTION:

The system handles dispatching of law enforcement, fire, and ambulance for Collier county. A records system is planned to be operational by July, 1983, where the results of all arrests will be stored including the description of the arrestee. The system will eventually take the place of daily reports by shift supervisors.

*** SYSTEM FUNCTIONS ***

FUNCTION	PROCESSING MODE	TYPE OF AGENCY SERVED	STATUS
Communication Processing	On-line	Law Enforcement	Operational
Message Switching	On-line	Law Enforcement	Operational
Communication Processing	On-line	Law Enforcement	Operational
On-line Inquiry	On-line	Law Enforcement	Operational
Activity Reporting	On-line	Law Enforcement	Planned
Administration Finance	On-line	Law Enforcement	Developmental
Address Index	On-line	Law Enforcement	Planned
Arrests	On-line	Law Enforcement	Developmental
Auto Registration	On-line	Law Enforcement	Planned
Citation Control	On-line	Law Enforcement	Planned
Corrections Personnel	On-line	Law Enforcement	Planned

RESPONSIBLE AGENCY CONTACT:
 Leslie E. Schlegel
 EDP Director
 Collier County Sheriff's Department
 P.O. Drawer 1277
 Naples, FL 33939
 813/774-4434

DATA PROCESSING CONTACT:
 Same

JURISDICTION.....DADE COUNTY
 SYSTEM NAME.....Criminal Justice Information System
 CODE NAME.....CJIS

AGENCY.....Office of Computer Services and Information Systems
 SYSTEM USERS.....Law Enforcement, Courts, Corrections, Clerk's Office
 POPULATION AREA SERVED.....1.7 million

HARDWARE.....IBM 3081 Model H 24M (Oct., 1983); 700 terminals
 SOFTWARE..Cobol, Assembler, Fortran, SPSS, RPG, PL/1, SK2, Natural Language

ENVIRONMENT.....Shared with other CJ and government information systems
 STARTING DATE.....July, 1968
 INTERFACE.....FCIC, NCIC
 AVAILABILITY OF DATA..SCK Natural Language can be used to perform analysis,
 also have some hard coded cobol stat's PGMS.

NARRATIVE DESCRIPTION:

The CJIS does most of the things a Criminal Justice System is supposed to do. It takes information on an individual when they are arrested and keeps track of them through the Jail and Courts. It links AKAs, provides soundex for location, prints calendars, subpoenas, warrants, etc. Has on-line up-date and inquiry to an S2K data base. System has about 3.3 million records. It also provides a witness sub-system, court dispositions and NCR reporting.

*** SYSTEM FUNCTIONS ***

<u>FUNCTION</u>	<u>PROCESSING MODE</u>	<u>TYPE OF AGENCY SERVED</u>	<u>STATUS</u>
Activity Reporting	Batch	All	Operational
Alphabetic Index	Batch	All	Operational
Arrests	Mixed	All	Operational
Assignment-Attorneys	Mixed	All	Operational
Assignment-Courtrooms	Mixed	All	Operational
Assignment-Judges	Mixed	All	Operational
Auto Registration	Mixed	All	Operational
Calendaring/Scheduling	Mixed	All	Operational
Case Control	Batch	All	Operational
Case Disposition Reporting	Batch	All	Operational
Citation Control	Batch	All	Operational
Communication Message Switching	On-line	Law Enforcement	Operational
Communication On-line Inquiry	On-line	Law Enforcement	Operational
Computer Assisted Dispatch	On-line	Law Enforcement	Operational

*** SYSTEM FUNCTIONS ***

<u>FUNCTION</u>	<u>PROCESSING MODE</u>	<u>TYPE OF AGENCY SERVED</u>	<u>STATUS</u>
Docketing	Batch	All	Operational
Driver Registration	Batch	All	Operational
Evidence Control	Mixed	Law Enforcement	Operational
Field Interview	On-line	Law Enforcement	Operational
Fines, Collateral, Bail	Mixed	All	Operational
Inmate Accounting	Mixed	Corrections	Operational
Inmate Records	Mixed	Corrections	Operational
Jury Management	Mixed	All	Operational
Juvenile Index	Batch	All	Operational
Juvenile Records	Batch	All	Operational
Missing Persons	On-line	Law Enforcement	Operational
Narcotics Control	On-line	Law Enforcement	Operational
Probation Control	On-line	All	Operational
Research/Statistics	Batch	All	Operational
Stolen Licenses	On-line	Law Enforcement	Operational
Stolen Property-Vehicles	On-line	Law Enforcement	Operational
Subjects-in-Process	Mixed	All	Operational
Summons Control	Mixed	All	Operational
Uniform Crime Reporting	Batch	Law Enforcement	Operational
Warrant Control	Mixed	Law Enforcement	Operational
Warrants/Wanted Persons	On-line	Law Enforcement	Operational
Witness Control	Mixed	All	Operational
Automated Vehicle Location	On-line	Law Enforcement	Operational
Geoprocessing	On-line	All	Operational
Prosecution Management	Mixed	All	Operational
Alimony Control	Mixed	All	Operational
Criminal History	Mixed	Law Enforcement	Operational
Police Personnel	On-line	Law Enforcement	Operational
Police Records Index	Mixed	Law Enforcement	Operational
Traffic Accident Reporting	Batch	Law Enforcement	Operational

RESPONSIBLE AGENCY CONTACT:
 Ted Macchiarella, Administrator
 Office of Computer Services and
 Information Systems
 5680 SW 87th Avenue
 Miami, FL 33173
 305/596-8354

DATA PROCESSING CONTACT:
 Edward L. Peabody
 Programming Systems Supervisor
 Office of Computer Services and
 Information Systems
 5680 SW 87th Avenue
 Miami, FL 33173
 305/596-8421

JURISDICTION.....DUVAL COUNTY
 SYSTEM NAME.....Law Enforcement Information System
 CODE NAME.....LEIS
 AGENCY.....Jacksonville Sheriff's Office
 SYSTEM USERS.....Law Enforcement
 POPULATION AREA SERVED.....571,441
 HARDWARE.....Burroughs B7700-2; 26 terminal
 SOFTWARE.....FCIC, NCIC
 ENVIRONMENT...Shared with other criminal justice and government information systems
 STARTING DATE.....October, 1975
 INTERFACE.....FCIC, NCIC
 AVAILABILITY OF DATA.....Yes, requires approval by Sheriff's Office

NARRATIVE DESCRIPTION:

The primary purpose of computerizing the identification and records section of the Jacksonville Sheriff's Office was to expedite the filing of offense reports, to correctly alphabetize the filing of names associated with offenses, gun registrations, wants and warrants, arrests and accidents, and to expedite the inquiry process of names and offenses. In addition to the master name index database, the sheriff's on-line is tied into a uniform crime reporting data base and a traffic systems data base. The uniform crime reporting data is coded.

*** SYSTEM FUNCTIONS ***

FUNCTION	PROCESSING MODE	TYPE OF AGENCY SERVED	STATUS
Activity Reporting	On-line	Law Enforcement	Operational
Address Index	On-line	Law Enforcement	Operational
Alphabet Index	On-line	Law Enforcement	Operational
Arrests	On-line	Law Enforcement	Operational
Arson	On-line	Law Enforcement	Operational
Auto Registration	On-line	Law Enforcement	Operational
Communications - Message Switching	On-line	Law Enforcement	Operational
Communications - On-line Inquiry	On-line	Law Enforcement	Operational
Crime Trend Analysis	On-line	Law Enforcement	Operational
Criminal Associates	On-line	Law Enforcement	Operational
Field Contact Reporting	On-line	Law Enforcement	Operational
Firearms Registration	On-line	Law Enforcement	Operational
Geoprocessing	On-line	Law Enforcement	Operational
Master Name Index	On-line	Law Enforcement	Operational
Missing Persons	On-line	Law Enforcement	Operational
Modus Operandi	On-line	Law Enforcement	Operational

*** SYSTEM FUNCTIONS ***

FUNCTION	PROCESSING MODE	TYPE OF AGENCY SERVED	STATUS
Research/Statistics	On-line	Law Enforcement	Operational
Simulation Modeling	On-line	Law Enforcement	Operational
Stolen Licenses	On-line	Law Enforcement	Operational
Stolen Property - Guns	On-line	Law Enforcement	Operational
Stolen Property - Vehicles	On-line	Law Enforcement	Operational
Stolen Property - Other	On-line	Law Enforcement	Operational
Traffic	On-line	Law Enforcement	Operational
Training	On-line	Law Enforcement	Operational
Uniform Crime Reporting	On-line	Law Enforcement	Operational
Warrant Control	On-line	Law Enforcement	Operational
Warrants/Wanted Persons	On-line	Law Enforcement	Operational
Work Load Analysis	On-line	Law Enforcement	Operational

RESPONSIBLE AGENCY CONTACT:
 Jacksonville Sheriff's Office
 501 East Bay Street
 Jacksonville, FL 32202
 904/633-4310

DATA PROCESSING CONTACT:
 Susan Brackin
 Assistant Information Systems
 Officer
 Jacksonville Sheriff's Office
 Jacksonville, FL 32202
 904/633-3960

JURISDICTION.....DUVAL COUNTY
 SYSTEM NAME.....Criminal Justice Information System
 CODE NAME.....CJIS
 AGENCY.....Criminal Justice Steering Committee
 SYSTEM USERS.....Law Enforcement, Courts
 POPULATION AREA SERVED.....571,441
 HARDWARE.....Burroughs B7700-2; 25 terminals
 SOFTWARE.....Cobol
 ENVIRONMENT.....Shared with criminal justice and government information systems
 STARTING DATE.....1973
 INTERFACE.....None
 AVAILABILITY OF DATA.....Contact Honorable Clifford B. Shepard

NARRATIVE DESCRIPTION:

CJIS provides services to the following agencies:
Courts - On-line filing and disposition of cases, maintain progress docket calendars, alpha indices, statistical reports, etc.
Sheriff - On-line booking. Batch arrest disposition.
State Attorney - On-line file assignment and summaries. Batch arraignment, calendars, indices, PROMIS.
 CJIS also provides micrographics interface.

*** SYSTEM FUNCTIONS ***

FUNCTION	PROCESSING MODE	TYPE OF AGENCY SERVED	STATUS
Alphabet Index	Batch	Court, State Attorney	Operational
Arrests	On-line	Sheriff	Operational
Assignment - Attorneys	On-line	State Attorney	Operational
Assignment - Judges	On-line	State Attorney	Operational
Calendaring	On-line	All	Operational
Case Disposition Reporting	Batch	Court	Operational
Docketing	On-line	Court	Operational
PROMIS	On-line	State Attorney	Operational

RESPONSIBLE AGENCY CONTACT:
 Honorable Clifford B. Shepard
 Chief Judge
 Criminal Justice Steering Committee
 Duval County Courthouse
 330 East Bay Street
 Jacksonville, FL 32202
 904/633-6884

DATA PROCESSING CONTACT:
 Susan Brackin
 Assistant Information Systems Officer
 Jacksonville Sheriff's Office
 501 East Bay Street
 Jacksonville, FL 32202
 904/633-4310

JURISDICTION.....DUVAL COUNTY
 SYSTEM NAME.....Juvenile Justice Information System
 CODE NAME.....JJIS
 AGENCY.....Clerk of the Circuit Court
 SYSTEM USERS.....Courts
 POPULATION AREA SERVED.....571,441
 HARDWARE.....Burroughs B7700-2; 12 M; 3 terminals
 SOFTWARE.....Cobol
 ENVIRONMENT.....Shared with other criminal justice and government information systems
 STARTING DATE.....1976
 INTERFACE.....None
 AVAILABILITY OF DATA.....Contact Honorable Clifford B. Shepard

NARRATIVE DESCRIPTION:

This system does on-line filing and disposition of cases, maintains progress dockets, calendars as a by-product of progress docket, and maintains detention information. It also batch prints calendars, alphabetic index, statistical reports, and various "take action" reports, e.g., pre-disposition report ordered, foster care review due, reached age 18/19.

*** SYSTEM FUNCTIONS ***

FUNCTION	PROCESSING MODE	TYPE OF AGENCY SERVED	STATUS
Alphabet Index	Both	Courts, State Attorney	Operational
Assignment - Judges	On-line	Courts	Operational
Calendaring	On-line	Courts	Operational
Case Disposition Reporting	Batch	Courts	Operational
Docketing	On-line	Courts	Operational

RESPONSIBLE AGENCY CONTACT:
 S. Morgan Slaughter
 Clerk of the Circuit Court
 Duval County Courthouse
 330 East Bay Street
 Jacksonville, FL 32202
 904/633-6726

DATA PROCESSING CONTACT:
 Susan Brackin
 Assistant Information Systems Officer
 330 East Bay Street
 Jacksonville, FL 32202
 904/633-6726

JURISDICTION.....DUVAL COUNTY
 SYSTEM NAME.....Computer Assisted Dispatching
 CODE NAME.....CAD
 AGENCY.....Jacksonville Sheriff's Office
 SYSTEM USERS.....Law Enforcement, Public Safety (Fire/Rescue)
 POPULATION AREA SERVED.....571,441
 HARDWARE.....Burroughs B7700-2; 12 M; 50 terminals
 SOFTWARE.....Cobol
 ENVIRONMENT.....Shared with other criminal justice and government information systems
 STARTING DATE.....April, 1973
 INTERFACE.....FCIC, NCIC
 AVAILABILITY OF DATA.....Yes, requires approval of Sheriff's office

NARRATIVE DESCRIPTION:

The "Computer Assisted Dispatching" system is an on-line, real-time aid to the Police & Fire/Rescue dispatcher as well as an on-line, real-time control mechanism for monitoring police patrol activity and the reports resulting from that activity. The program is run on a 24 hour, 7 days per week basis.

***** SYSTEM FUNCTIONS *****

<u>FUNCTION</u>	<u>PROCESSING MODE</u>	<u>TYPE OF AGENCY SERVED</u>	<u>STATUS</u>
Computer Assisted Dispatch	On-line	Law Enforcement & Public Safety	Operational

RESPONSIBLE AGENCY CONTACT:
 Jacksonville Sheriff's Office
 501 East Bay Street
 Jacksonville, FL 32202
 904/633-4310

DATA PROCESSING CONTACT:
 Susan Brackin
 Assistant Information Systems Officer
 Duval County Courthouse
 330 East Bay Street
 Jacksonville, FL 32202
 904/633-3960

JURISDICTION.....DUVAL COUNTY
 SYSTEM NAME.....Clerk Civil
 CODE NAME.....CC
 AGENCY.....Clerk of the Circuit Court
 SYSTEM USERS.....Courts
 POPULATION AREA SERVED.....571,441
 HARDWARE.....Burroughs 37700; 12 M; 20 terminals
 SOFTWARE.....Cobol
 ENVIRONMENT.....Shared with other criminal justice and government information systems
 STARTING DATE.....1968
 INTERFACE.....None
 AVAILABILITY OF DATA.....Contact Clerk of the Circuit Court

NARRATIVE DESCRIPTION:

This system operates on-line, providing the following services: file and dispose cases, maintain progress docket, calendars as by-product of progress docket, traffic citations, calendaring, maintenance of official records, marriage licenses. It also does micro-graphics interface.

***** SYSTEM FUNCTIONS *****

<u>FUNCTION</u>	<u>PROCESSING MODE</u>	<u>TYPE OF AGENCY SERVED</u>	<u>STATUS</u>
Alphabet Index	Batch	Courts	Operational
Assignment - Judges	On-line	Courts	Operational
Calendaring	On-line	Courts	Operational
Case Disposition Reporting	Batch	Courts	Operational
Docketing	On-line	Courts	Operational
Fine Collection	On-line	Courts	Operational
Micrographics	Batch	Courts	Operational
Traffic	On-line	Courts	Operational
Jury Selection	Batch	Courts	Operational

RESPONSIBLE AGENCY CONTACT:
 S. Morgan Slaughter
 Clerk of the Circuit Court
 Duval County Courthouse
 330 East Bay Street
 Jacksonville, FL 32202
 904/633-6726

DATA PROCESSING CONTACT:
 Susan Brackin
 Assistant Information Systems Officer
 Duval County Courthouse
 330 East Bay Street
 Jacksonville, FL 32202
 904/633-3960

JURISDICTION.....ESCAMBIA COUNTY

SYSTEM NAME.....Morgan System
 CODE NAME.....None reported

AGENCY.....Escambia County Sheriff's Department
 SYSTEM USERS.....Law Enforcement, Corrections
 POPULATION AREA SERVED.....260,000

HARDWARE.....IBM Series 1 384K, 9 terminals
 SOFTWARE.....Cobol, EDL

ENVIRONMENT.....Dedicated
 STARTING DATE.....May, 1982
 INTERFACE.....None
 AVAILABILITY OF DATA.... Yes, A "Hold Harmless Agreement" must be signed by authorized person in any agency using our output for any purpose

NARRATIVE DESCRIPTION:

Our system currently has in operation the following files: Warrants; Incident reports; Property; Suspects; Pawn Shops; & Vehicle File. We have already installed but not yet on-line a budget package and a payroll package which includes a personnel file. We are about to go out on bids for additional hardware to enable us to install a Jail Management System. We are planning to write our own programs for Fleet Management and another for Control of Fixed Assets. We currently furnish pawn shop information to the Pensacola Police Department and the Baldwin County, Alabama, Sheriff's Department on a regular basis.

*** SYSTEM FUNCTIONS ***

<u>FUNCTION</u>	<u>PROCESSING MODE</u>	<u>TYPE OF AGENCY SERVED</u>	<u>STATUS</u>
Activity Reporting	Batch	Law Enforcement	Operational
Administration/Finance	Batch	Law Enforcement	Developmental
Case Disposition Reporting	Batch	Law Enforcement	Operational
Arrest	Batch	Law Enforcement	Operational
Corrections Personnel Records	Batch	Corrections	Planned
Crime Trend Analysis	Batch	Law Enforcement	Operational
Criminal Associates	Batch	Law Enforcement	Operational
Field Contact Reporting	Batch	Law Enforcement	Operational
Inmate Pop. Accounting	Batch	Law Enforcement	Planned
Inmate Records	Batch	Corrections	Planned
Jail Admn. Mgt. Sys.	Batch	Corrections	Planned
Comm. On-line Inquiry	Batch	Law Enforcement	Operational
Physical Goods Inventory	Batch	Law Enforcement	Planned
Police Personnel Records	Batch	Law Enforcement	Developmental

*** SYSTEM FUNCTIONS ***

<u>FUNCTION</u>	<u>PROCESSING MODE</u>	<u>TYPE OF AGENCY SERVED</u>	<u>STATUS</u>
Stolen Property-Guns	Batch	Law Enforcement	Operational
Stolen Property-Vehicles	Batch	Law Enforcement	Operational
Stolen Property-Other	Batch	Law Enforcement	Operational
Training	Batch	Law Enforcement	Planned
Vehicle Maintenance	Batch	Law Enforcement	Planned
Warrants/Wanted Persons	Batch	Law Enforcement	Operational
Workload Analysis	Batch	Law Enforcement	Operational
Modus Operandi	Batch	Law Enforcement	Operational
Stolen Licenses	Batch	Law Enforcement	Operational
Trust Fund Accounting	Batch	Law Enforcement	Developmental
Victim Data Coll. Sys.	Batch	Law Enforcement	Operational
Pawn Shop Data	Batch	Law Enforcement	Operational

RESPONSIBLE AGENCY CONTACT:

Arthur J. McMillian
 Finance Officer
 Escambia County Sheriff's Dept.
 P.O. Box 18770
 Pensacola, FL 32523
 904 436-9540

DATA PROCESSING CONTACT:

Same

JURISDICTION.....HILLSBOROUGH COUNTY

SYSTEM NAME.....Criminal Justice Information System
CODE NAME.....CJIS

AGENCY.....Hillsborough County Board of Criminal Justice
SYSTEM USERS.....Law Enforcement, Courts, Corrections
POPULATION AREA SERVED.....650,000

HARDWARE.....MODCOMP Classic Model 7861 1.5MB, 70 terminals
SOFTWARE.....Cobol, Fortran, Assembler

ENVIRONMENT.....Dedicated
STARTING DATE.....January, 1980
INTERFACE.....FCIC Planned for 4th quarter 1983
AVAILABILITY OF DATA.....Yes, based on request type and availability of resources to process request

NARRATIVE DESCRIPTION:

The Hillsborough County Criminal Justice Information System is dedicated with equipment and staff to automate prisoner, criminal court case, and law enforcement internal applications.

*** SYSTEM FUNCTIONS ***

FUNCTION	PROCESSING MODE	TYPE OF AGENCY SERVED	STATUS
Arrests	Not Reported	Not Reported	Operational
Calendar/ing/ Scheduling	Not Reported	Not Reported	Operational
Case Disposition Reporting	Not Reported	Not Reported	Operational
Criminal History (CCH)	Not Reported	Not Reported	Operational
Custody/Bond Status	Not Reported	Not Reported	Operational
Defendant Control	Not Reported	Not Reported	Operational
Docketing	Not Reported	Not Reported	Operational
Inmate Population Accounting	Not Reported	Not Reported	Operational
Inmate Records	Not Reported	Not Reported	Operational
Jail Information System (JIS)	Not Reported	Not Reported	Operational
Research/Statistics	Not Reported	Not Reported	Operational
Speedy Trial	Not Reported	Not Reported	Operational
Subjects-in-Process	Not Reported	Not Reported	Operational
Warrant Control	Not Reported	Not Reported	Operational
Warrants/Wanted Persons	Not Reported	Not Reported	Operational

RESPONSIBLE AGENCY CONTACT:
Board of Criminal Justice
P.O. Box 3371
Tampa, FL 33601
813/247-6411

DATA PROCESSING CONTACT:
Robert A. Seifried
Director, Department of Criminal Justice Information
P.O. Box 3371
Tampa, FL 33601
813/247-6411

JURISDICTION.....LEVY COUNTY

SYSTEM NAME.....Not Reported
CODE NAME.....Not Reported

AGENCY.....Levy County Board of County Commissioners
SYSTEM USERS.....Courts, Clerk of Courts, Finance & Tax Collector
POPULATION AREA SERVED.....23,000

HARDWARE.....Nexdorf 2 x 60M, 9 terminals
SOFTWARE.....Editor

ENVIRONMENT.....Dedicated
STARTING DATE.....March, 1982
INTERFACE.....None
AVAILABILITY OF DATA.....No

NARRATIVE DESCRIPTION:
None reported.

*** SYSTEM FUNCTIONS ***

FUNCTION	PROCESSING MODE	TYPE OF AGENCY SERVED	STATUS
Finance	On-line	County Commissioners	Operational
Alphabetic Index	On-line	Courts	Operational
Child/Family Index	On-line	Courts	Operational
Docketing	On-line	Courts	Operational
Fine & Bail Collection	On-line	Courts	Operational
Traffic	On-line	Courts	Operational
Trust Fund Accounting	On-line	County Commissioners	Operational
Warrant Control	On-line	County Commissioners	Operational
Jury Selection	On-line	Courts	Planned
Boat Registration	On-line	Tax Collector	Operational
Ad Valorem Tax Collection	On-line	Tax Collector	Operational
Voter Registration	On-line	Supervisor of Elections	Operational
Payroll	On-line	County Commissioners	Operational
Inventory	On-line	County Commissioners	Operational

RESPONSIBLE AGENCY CONTACT:
Sheila Rees
Levy County Board of County Commissioners
P.O. Box 310
Bronson, FL 32621
904/486-4311

DATA PROCESSING CONTACT:
Same

JURISDICTION.....MANATEE COUNTY
 SYSTEM NAME.....Clerk of Court
 CODE NAME.....None given
 AGENCY.....Manatee County Commissioners
 SYSTEM USERS.....Law Enforcement, Clerk of Court, Public Defender, State Attorney and Probation
 POPULATION AREA SERVED.....160,000
 HARDWARE.....NCR 8575 MP, 8M, 16 terminals
 SOFTWARE.....Cobol, Fortran, Basic, Neat 3, RPG
 ENVIRONMENT.....Shared with Sheriff's Dept., government agencies
 STARTING DATE.....1976
 INTERFACE.....None
 AVAILABILITY OF DATA.....No

NARRATIVE DESCRIPTION:

Criminal, traffic and civil: indexing, progress docketing, inquiry, prints court calendars include arraignments, hearings, trials, etc. Prints SRS reports, financial reports, fine payment entry. Domestic relations: indexing progress docketing, payment entry, reports for delinquent cases - rules to show cause. Jury and witness: on-line venire selection, prints venires, summons. Attendance entry for jurors and witnesses, prints checks, prints reports for state and local needs.

* * * SYSTEM FUNCTIONS * * *

SYSTEM FUNCTIONS	PROCESSING MODE	TYPE OF AGENCY SERVED	STATUS
Indexing (alpha)	Both	Courts	Operational
Alimony Control	Both	Courts	Operational
Calendering	Both	Courts	Operational
Case Disp. Reporting	Both	Courts	Operational
Docketing	Both	Courts	Operational
Fine Collection Control	Both	Courts	Operational
Jury Selection & Mgt.	Both	Courts	Operational
Traffic (D-6)	Both	Courts	Operational
Witness Payment	Both	Courts	Operational

RESPONSIBLE AGENCY CONTACT:
 Manatee County Commissioners
 1115 Manatee Avenue W.
 Bradenton, FL 33506
 813/748-4501

DATA PROCESSING CONTACT:
 Diane Frenz
 Computer Data Center Supervisor
 P.O. Box 1000
 Brandenton, FL 33506
 813/748-4501

JURISDICTION.....MONROE COUNTY
 SYSTEM NAME.....Criminal Court System
 CODE NAME.....CCS
 AGENCY.....Clerk of the Circuit Court
 SYSTEM USERS.....Law Enforcement, Courts, Corrections
 POPULATION AREA SERVED.....63,000
 HARDWARE.....NCR 8455 1M, 12 terminals
 SOFTWARE.....Cobol, Assembler, Neat 3
 ENVIRONMENT.....Shared with other government information systems
 STARTING DATE.....1973
 INTERFACE.....None
 AVAILABILITY OF DATA.....Yes, will provide information in existing formats subject to availability of processing time and payment of associated costs

NARRATIVE DESCRIPTION:

Provides on-line docketing, posting of events and basic case information. Also provides arraignment, disposition conference, trial and sentencing calendars. Also provides a detailed jail list with a listing of all outstanding cases and current status.

* * * SYSTEM FUNCTIONS * * *

FUNCTION	PROCESSING MODE	TYPE OF AGENCY SERVED	STATUS
Docketing	On-line	All	Operational
Calendars	On-line/Batch	All	Operational
Jail List Information	On-Line/Batch	All	Operational
History files to Microfiche	Batch	All	Operational
Indexes	Batch	All	Operational

RESPONSIBLE AGENCY CONTACT:
 Ralph W. White
 Clerk of the Circuit Court
 P.O. Box 1680
 Key West, FL 33040
 305/294-4641

DATA PROCESSING CONTACT:
 Danny Kolhage
 Deputy Clerk
 Monroe County Circuit Court
 P.O. Box 1680
 Key West, FL 33040
 305/294-4641 ext. 438

JURISDICTION.....MONROE COUNTY
 SYSTEM NAME.....Police Operation Support System Elementary
 CODE NAME.....POSSE
 AGENCY.....Monroe County Sheriff's Office
 SYSTEM USERS.....Law Enforcement, Corrections
 POPULATION AREA SERVED.....65,000
 HARDWARE.....Data General CS200B with 147 MB & 20 MB, 24 terminals
 SOFTWARE.....Cobol
 ENVIRONMENT.....Dedicated
 STARTING DATE.....April, 1982
 INTERFACE.....None
 AVAILABILITY OF DATA.....Yes, Limitations not reported

NARRATIVE DESCRIPTION:

Comprehensive System to store and retrieve information pertaining to Police Operations including a variety of reports designed to aid management.

*** SYSTEM FUNCTIONS ***

<u>FUNCTION</u>	<u>PROCESSING MODE</u>	<u>TYPE OF AGENCY SERVED</u>	<u>STATUS</u>
Arrest	On-line	Law Enforcement	Operational
Calls for Service	On-line	Law Enforcement	Operational
Incident Name	On-line	Law Enforcement	Operational
Incident Suspect	On-line	Law Enforcement	Operational
Field Contact	On-line	Law Enforcement	Operational
Known Offender	On-line	Law Enforcement	Operational
Juvenile	On-line	Law Enforcement	Operational
Offense	On-line	Law Enforcement	Operational
Personnel	On-line	Law Enforcement	Operational
Property	On-line	Law Enforcement	Operational
Vehicle	On-line	Law Enforcement	Operational
Wants/Warrants	On-line	Law Enforcement	Operational
Microfilm	On-line	Law Enforcement	Operational
Crime Analysis	On-line	Law Enforcement	Operational
Investigative Mgt.	On-line	Law Enforcement	Operational
Budget	On-line	Law Enforcement	Operational

RESPONSIBLE AGENCY CONTACT:
 Major Michael M. Somberg
 Monroe County Sheriff's Office
 500 Whitehead Street
 Key West, FL 33040
 305/296-2424

DATA PROCESSING CONTACT:
 Same

JURISDICTION.....ORANGE COUNTY
 SYSTEM NAME.....Justice Information Systems
 CODE NAME.....Orange JUIS
 AGENCY.....Orange County Sheriff's Office
 SYSTEM USERS.....Law Enforcement, Corrections
 POPULATION AREA SERVED.....500,000
 HARDWARE.....TI 990/30 1.5 MEG, 32 terminals
 SOFTWARE.....Cobol, Assembler, Pascal
 ENVIRONMENT.....Dedicated
 STARTING DATE.....December, 1982
 INTERFACE.....NCIC, FCIC, NLETS
 AVAILABILITY OF DATA.....Yes, Each request must be evaluated on security, privacy, and cost to the agency conditions

NARRATIVE DESCRIPTION:

Our system provides tracking of criminal incidents from the initial call for service through investigation, warrant, arrest, incarceration, temporary release, sentencing and probation. It also provides history access and statistical data for management.

*** SYSTEM FUNCTIONS ***

<u>FUNCTION</u>	<u>PROCESSING MODE</u>	<u>TYPE OF AGENCY SERVED</u>	<u>STATUS</u>
Activity Reporting	On-line	Law Enforcement	Operational
Arrests/Booking	On-line	Law Enforcement/ Corrections	Operational
Crime Analysis	On-line/Batch	Law Enforcement	Operational
Evidence Control	On-line/Batch	Law Enforcement	Operational
Jail Information System	On-line	Corrections	Operational
UCR	On-line	Law Enforcement	Operational
Warrants/Wanted	On-line	Law Enforcement	Operational

RESPONSIBLE AGENCY CONTACT:
 Robert C. Smallback, Jr., Director
 Information Systems
 Orange County Sheriff's Office
 P.O. Box 1440
 Orlando, FL 32802
 305/420-4086

DATA PROCESSING CONTACT:
 Captain Michael Penn, Commander
 Court Services and Information
 Systems Division
 Orange County Sheriff's Office
 P.O. Box 1440
 Orlando, FL 32802
 305/420-3085

JURISDICTION.....PALM BEACH COUNTY
 SYSTEM NAME.....Palm Beach County Law Enforcement Management Information System
 CODE NAME.....PALMS
 AGENCY.....Palm Beach County Sheriff's Office
 SYSTEM USERS.....Law Enforcement, Courts, Corrections
 POPULATION AREA SERVED.....600,000
 HARDWARE.....IBM 4341
 SOFTWARE.....Cobol
 ENVIRONMENT.....Dedicated
 STARTING DATE.....June, 1978
 INTERFACE.....NCIC, FCIC
 AVAILABILITY OF DATA.....Yes, Limitations not reported

NARRATIVE DESCRIPTION:

The computer has the following subsystems now running: offense entry and reporting on-line/UCR report, computer aided dispatch, payroll/personnel, financial/budget, jail booking, courts - misdemeanor/felony/traffic/civil, and vehicle maintenance. All are on-line with batch reporting systems. Also serves municipal police departments.

* * * SYSTEM FUNCTIONS * * *

FUNCTION	PROCESSING MODE	TYPE OF AGENCY SERVED	STATUS
Activity Reporting	Both	Law Enforcement	Operational
Administration/Finance	Both	Law Enforcement	Operational
Alimony Control	Both	Courts	Operational
Arrests	Both	Law Enforcement	Operational
Calendaring/Scheduling	Both	Courts	Operational
Child/Family Support	Both	Courts	Operational
Communication Processing			
Message Switching	Both	Law Enforcement	Operational
Communication Processing			
Mobile Digital Terminal	Both	Law Enforcement	Operational
Communication Processing			
On-line Inquiry	Both	Law Enforcement	Operational
Computer-Assisted Dispatch	Both	Law Enforcement	Operational
Field Contact Reporting	Both	Law Enforcement	Operational
Inmate Population Acc.	Both	Corrections	Operational
Inmate Records	Both	Corrections	Operational
Jail Information System	Both	Corrections	Operational
Missing Persons	Both	Law Enforcement	Operational
Uniform Crime Reporting	Both	Law Enforcement	Operational
Vehicle Maintenance	Both	Law Enforcement	Operational

RESPONSIBLE AGENCY CONTACT:
 Gary Cornn
 EDP Supervisor
 P.O. Box 670
 West Palm Beach, FL 33402
 305/471-2000

DATA PROCESSING CONTACT:
 Same

JURISDICTION.....PASCO COUNTY
 SYSTEM NAME.....Criminal Justice Information System
 CODE NAME.....CJIS
 AGENCY.....Pasco County Board of County Commissioners
 SYSTEM USERS.....Law Enforcement, Courts, Corrections
 POPULATION AREA SERVED.....220,000
 HARDWARE.....IBM 4341-L1, 190 terminals
 SOFTWARE.....Cobol
 ENVIRONMENT.....Shared with other government information systems
 STARTING DATE.....January, 1979
 INTERFACE.....None
 AVAILABILITY OF DATA.....Yes, Limitations not reported

NARRATIVE DESCRIPTION:

The Pasco County Justice Information System (PCJIS) is an automated adult offender/case tracking system which follows person/case activity from initial arrest (including automated booking) through the judicial process (including automation of the docket). The system is a total On-Line System and unlike many other systems, data is entered by each user, at the user site, allowing immediate access to recent information and eliminating document turn around delays. The key to the system is that it is a shared system, which consolidates each user's data into a comprehensive picture, and tracks all of the data on a given defendant and/or case as they move through the criminal justice process.

* * * SYSTEM FUNCTIONS * * *

FUNCTIONS	PROCESSING MODE	TYPE OF AGENCY SERVED	STATUS
Alphabetic Index	On-line	All	Operational
Arrests	On-line	Law Enforcement	Operational
Assignment-Attorneys	On-line	Courts	Operational
Assignment-Courtrooms	On-line	Courts	Operational
Assignment-Judges	On-line	Courts	Operational
Calendaring/Scheduling	On-line	Courts	Operational
Case Control	Both	All	Operational
Case Disposition			
Reporting	Batch	Courts	Operational
Criminal History	Batch	Courts	Operational
Custody/Bond Status	On-line	Law Enforcement	Operational
Defendant Control	Both	All	Operational
Docketing	On-line	Courts	Operational
Inmate Population			
Accounting	Both	Corrections	Operational
Jail Information System	Both	Corrections	Operational

*** SYSTEM FUNCTIONS ***

<u>FUNCTIONS</u>	<u>PROCESSING MODE</u>	<u>TYPE OF AGENCY SERVED</u>	<u>STATUS</u>
Juvenile Index	Both	All	Operational
Juvenile Records	Both	All	Operational
Parole Control	Both	Parole & Probation	Operational
Probation Control	Both	Parole & Probation	Operational
Research/Statistics	Both	All	Planned
Speedy Trial	Both	Courts	Operational
Summons Control	Both	Law Enforcement	Operational
Warrant Control	Both	Law Enforcement	Operational
Warrants/Wanted Persons	Both	Law Enforcement	Operational
Witness Control	Both	Courts	Operational

RESPONSIBLE AGENCY CONTACT:

Russell R. Long
 Chief Deputy Clerk
 Clerk of Circuit Court
 705 E. Live Oak Avenue
 Dade City, FL 33525
 904/567-4542

DATA PROCESSING CONTACT:

Same

JURISDICTION.....PINELLAS COUNTY

SYSTEM NAME.....Pinellas County Justice Information Systems
 CODE NAME.....PCJIS

AGENCY.....Court Information Systems
 SYSTEM USERS.....Law Enforcement; Courts; Corrections; Clerk of the Court
 POPULATION AREA SERVED.....850,000

HARDWARE.....AS5000/IBM 4341 Group 2; 4 M; 225 terminals
 SOFTWARE.....Cobol, SPSS

ENVIRONMENT.....Shared with other government information systems
 STARTING DATE.....July, 1977
 INTERFACE.....FCIC, NCIC
 AVAILABILITY OF DATA.....Yes, Limitations not reported

NARRATIVE DESCRIPTION:

The Pinellas County Justice Information System (PCJIS) is an automated offender/case tracking system which follows person/case activity from the initial arrest/booking through the judicial process.
 PCJIS is an on-line system. Data is entered by each user at the user site allowing immediate access to current information. The key to PCJIS is that it is a shared system. All data on a given defendant/case as it moves through the criminal justice process is available to on-line PCJIS users.

*** SYSTEM FUNCTIONS ***

<u>FUNCTION</u>	<u>PROCESSING MODE</u>	<u>TYPE OF AGENCY SERVED</u>	<u>STATUS</u>
Activity Reporting	Both	All	Operational
Address Index	Both	All	Operational
Alphabet Index	Both	All	Operational
Arrests	Both	All	Operational
Assignment - Attorneys	Both	All	Operational
Assignment - Courtrooms	Both	All	Operational
Assignment - Judges	Both	All	Operational
Auto Registration	Both	All	Operational
Calendaring/Scheduling	Both	All	Operational
Case Control	Both	All	Operational
Case Disposition Reporting	Both	All	Operational
Command and Control	Both	Law Enforcement, Sheriff's Office	Operational
Communications Processing Message Switching	Both	All	Operational
Communications Processing Mobile Dig. Terminals	Both	Sheriff's Office	Operational
Communications Processing On-line Inquiry	Both	All	Operational

* * * SYSTEM FUNCTIONS * * *

<u>FUNCTION</u>	<u>PROCESSING MODE</u>	<u>TYPE OF AGENCY SERVED</u>	<u>STATUS</u>
Computer Assisted Dispatch	Both	Sheriff's Office	Operational
Criminal History (CCH)	Both	State Attorney	Operational
Custody/Bond Status	Both	All	Operational
Defendant Control	Both	All	Operational
Docketing	Both	All	Operational
Evidence Control	Both	Law Enforcement	Operational
Geoprocessing	Both	All	Operational
Inmate Records	Both	All	Operational
Jury Selection and Management	Both	Courts/Clerk	Operational
Juvenile Index	Both	All	Operational
Juvenile Records	Both	All	Operational
Missing Persons	Both	All	Operational
Parole Control	Both	All	Operational
Probation Control	Both	All	Operational
Research/Statistics	Both	All	Operational
Speedy Trial	Both	All	Operational
Subjects-in-Process	Both	All	Operational
Uniform Crime Reporting	Both	Sheriff's Office	Operational
Warrant Control	Both	All	Operational
Warrants/Wanted Persons	Both	All	Operational
Witness Control	Both	All	Operational

RESPONSIBLE AGENCY CONTACT:

Joanne Wilson
 Court Information Systems
 Room 201 - Old Courthouse
 315 Court Street
 Clearwater, FL 33516
 813/462-3066

DATA PROCESSING CONTACT:

Same

JURISDICTION.....SARASOTA COUNTY

SYSTEM NAME.....Sarasota County Arrest Retrieval Information System
 CODE NAME.....SCARES

AGENCY.....Sarasota County Sheriff's Department
 SYSTEM USERS.....Law Enforcement, Courts
 POPULATION AREA SERVED.....250,000

HARDWARE.....VCR 8575 4MEG, 40 terminals
 SOFTWARE.....Cobol, Neat 3

ENVIRONMENT.....Shared with other government systems
 STARTING DATE.....July, 1975
 INTERFACE.....None
 AVAILABILITY OF DATA.....Yes, only to criminal justice agencies

NARRATIVE DESCRIPTION:

SCARES is an on-line - real time system. We have all County criminal history information, Longboat Key, North Port and Sarasota County offense information on-line. Alpha & numerical index. All county wide field interrogations. Hard copy back-up of index, hard copy reports, daily, weekly, monthly reports. Also reports on demand. U.C.R. hard copy and tape.

* * * SYSTEM FUNCTIONS * * *

<u>FUNCTIONS</u>	<u>PROCESSING MODE</u>	<u>TYPE OF AGENCY SERVED</u>	<u>STATUS</u>
Activity Reporting	On-line	Law Enforcement	Operational
Address Index	On-line	Law Enforcement	Operational
Alphabetical Index	On-line	Law Enforcement	Operational
Arrest	On-line	Law Enforcement	Operational
Complaints	On-line	Law Enforcement	Operational
Alarms (false)	On-line	Law Enforcement	Operational
Case Dispositions	On-line	Law Enforcement	Operational
Field Interrogations	On-line	Law Enforcement	Operational
Warrants (local)	On-line	Law Enforcement	Operational
Cash Bonds	On-line	Law Enforcement	Development
Digital Dispatch	On-line	Law Enforcement	Operational
Digital Interface to SCARES	On-line	Law Enforcement	Development
Zone Activity Reports	Batch	Law Enforcement	Operational
Back-up Reports	Batch	Law Enforcement	Operational
Administrative Reports	Batch	Law Enforcement	Operational
Personnel	Batch	Law Enforcement	Operational
Inventory	Batch	Law Enforcement	Operational
Car Control	Batch	Law Enforcement	Operational
Grid Maps	Batch	Law Enforcement	Operational
Hourly Reports	Batch	Law Enforcement	Operational

RESPONSIBLE AGENCY CONTACT:

Dottie Bukovac, Sgt.
 Records
 Sarasota County Sheriff's Dept.
 P.O. Box 4115
 Sarasota, FL 33578
 813/366-9350

DATA PROCESSING CONTACT:

Same

JURISDICTION.....SEMINOLE COUNTY

SYSTEM NAME.....Prosecutor Management Information System
CODE NAME.....PROMIS

AGENCY.....Seminole County Sheriff's Department
SYSTEM USERS.....Law Enforcement, Courts, Corrections
POPULATION AREA SERVED.....180,000

HARDWARE.....TI 990/f12 IMEG 64K, 31 terminals
SOFTWARE.....Cobol, Fortran, Assembler, RPG, Pascal

ENVIRONMENT.....Dedicated
STARTING DATE.....January, 1980
INTERFACE.....FCIC, NCIC, NLETS
AVAILABILITY OF DATA.....No, Haven't performed sufficient review to
distribute data at this time

NARRATIVE DESCRIPTION:

The current CJIS contains a module to gather complaint information. This pertains to domestic problems, barking dogs, murder, etc. The complaints generate additional paper work in approximately 25% of the total activity. Arrests usually account for 33% of the additional paper activity. The additional paper work is entered into the PROMIS system which basically tracks a subject in process.

*** SYSTEM FUNCTIONS ***

<u>FUNCTIONS</u>	<u>PROCESSING MODE</u>	<u>TYPE OF AGENCY SERVED</u>	<u>STATUS</u>
Arrests	On-line	Law Enforcement Corrections, Courts	Testing
Assignment-Attorneys	On-line	All	Testing
Assignment-Judges	On-line	All	Testing
Assignment-Courtrooms	On-line	All	Testing
Calendaring	On-line	All	Testing
Case Disposition Reporting	On-line	All	Testing
Corrections	On-line	All	Testing
Evidence Control	On-line	All	Testing
Bail Control	On-line	All	Testing
Inmate Population	On-line	All	Testing

RESPONSIBLE AGENCY CONTACT:
Richard Telson, CJIS Manager
Seminole County Sheriff's Dept.
1345 28th Street
Sanford Airport
Sanford, FL 32771
305/322-5115

DATA PROCESSING CONTACT:
Same

JURISDICTION.....VOLUSIA COUNTY

SYSTEM NAME.....Criminal Justice Information System
CODE NAME.....CJIS

AGENCY.....Volusia County Sheriff's Office
SYSTEM USERS.....Law Enforcement, Courts, Corrections
POPULATION AREA SERVED.....250,000

HARDWARE.....IBM 4341 2 MEG, 35 terminals
SOFTWARE.....Cobol

ENVIRONMENT.....Dedicated
STARTING DATE.....January, 1982
INTERFACE.....None
AVAILABILITY OF DATA.....Not all criminal courts and circuit court cases
are on the automated system at this time. As
old cases become active they receive a new case
number, therefore being available to all users

NARRATIVE DESCRIPTION:

The Volusia County Criminal Justice Information System is an automated adult Offense/Case Tracking System which follows a person/case activity from the initial arrest (On-line booking) through the judicial process (including automated court paperwork). This system is a total on-line system. Each user enters data pertaining to his individual function in the judicial process.

*** SYSTEM FUNCTIONS ***

<u>FUNCTIONS</u>	<u>PROCESSING MODE</u>	<u>TYPE OF AGENCY SERVED</u>	<u>STATUS</u>
Criminal Case Control	On-line	All	Operational
Calendaring/Scheduling	On-line	Courts	Operational
Court Notices	Batch	Courts	Operational
Circuit Court Cost Bill	Batch	Courts	Operational
Defendant Index Cards	Batch	Courts	Operational
Case Statistical Report	Batch	Courts	Operational
Booking Card	On-line	Corrections	Operational
24 Hour Arrest List	On-line	Corrections	Operational
1st Appearance List	On-line	Courts	Operational
Jail Attendance List	On-line	Corrections	Operational
Public Defender Reports	On-line	Public Defender	Operational
Information Filing			
Alert Report	On-line	State Attorney	Operational
PSI Status Report	On-line	Probation & Parole	Operational
NSI Report	On-line	Corrections	Operational
Speedy Trial Report	On-line	State Attorney	Operational
Arraignment Alert Report	On-line	State Attorney	Operational

*** SYSTEM FUNCTIONS ***

<u>FUNCTIONS</u>	<u>PROCESSING MODE</u>	<u>TYPE OF AGENCY SERVED</u>	<u>STATUS</u>
State Attorney Action Report	On-line	State Attorney	Operational
Offense Report Tracking System	On-line	Law Enforcement	Operational
Computer Aid Dispatch	On-line	Law Enforcement	Planned

RESPONSIBLE AGENCY CONTACT:
 William E. Kurras
 CJIS Coordinator
 Volusia County Sheriff's Office
 49 Keyton Drive
 Daytona Beach, FL 32014
 904/255-1448

DATA PROCESSING CONTACT:
 Same

JURISDICTION.....GAINESVILLE, CITY OF
 SYSTEM NAME.....Gainesville Local Area/Dispatch-Information System
 CODE NAME.....GLADIS
 AGENCY.....Gainesville Police Department
 SYSTEM USERS.....Law Enforcement
 POPULATION AREA SERVED.....85,000
 HARDWARE.....PDP-1170, RMOS/RM80 Disk, TU16 Tape
 SOFTWARE.....Cobol, Assembler, Datatrieve 11, FMS 11, Sort 11
 ENVIRONMENT...Shared with other criminal justice and government information systems
 STARTING DATE.....January, 1982
 INTERFACE.....Planned - FCIC, NCIC
 AVAILABILITY OF DATA.....Yes, For criminal justice agencies only

NARRATIVE DESCRIPTION:

This system is an integrated criminal justice information system that tracks an offender from time of arrest through court disposition. The system also has a name/location program for utility users on the Regional Utilities Systems (Gainesville).

*** SYSTEM FUNCTIONS ***

<u>FUNCTION</u>	<u>PROCESSING MODE</u>	<u>TYPE OF AGENCY SERVED</u>	<u>STATUS</u>
Case Control	Not Reported	Law Enforcement	Operational
Command and Control	Not Reported	Law Enforcement	Operational
Comm. Processing - Message Switching	Not Reported	Law Enforcement	Operational
Comm. Processing - On-line Inquiry	Not Reported	Law Enforcement	Operational
Comm. Processing - Other	Not Reported	Law Enforcement	Operational
Computer Assisted Dispatch	Not Reported	Law Enforcement	Operational
Computer Assisted Instruction	Not Reported	Law Enforcement	Operational
Police Personnel Records	Not Reported	Law Enforcement	Operational
Simulation Modeling	Not Reported	Law Enforcement	Operational
Stolen Property - Other	Not Reported	Law Enforcement	Operational

RESPONSIBLE AGENCY CONTACT:
 Lieutenant E.E. Eunice
 Communications Division Commander
 Gainesville Police Department
 721 NW 6th Street
 Gainesville, FL 32601
 904/374-2450

DATA PROCESSING CONTACT:
 Mark Weston
 Systems Analyst
 Information Systems
 City Hall
 Gainesville, FL 32601
 904/374-2020

JURISDICTION.....MIAMI, CITY OF
 SYSTEM NAME.....Computer Aided Dispatch
 CODE NAME.....CAD
 AGENCY.....Miami Police Department
 SYSTEM USERS.....Law Enforcement
 POPULATION AREA SERVED.....440,177
 HARDWARE.....PDP 11-70; 256 K; 18 terminals
 SOFTWARE.....Cobol, Fortran, SPSS, Assembler
 ENVIRONMENT.....Dedicated
 STARTING DATE.....October, 1976
 INTERFACE.....FCIC, NCIC, DCJIS
 AVAILABILITY OF DATA.....Yes, Excluding juvenile data

NARRATIVE DESCRIPTION:

CAD assists dispatchers in locating field units available for calls and monitors units on existing calls.

*** SYSTEM FUNCTIONS ***

<u>FUNCTION</u>	<u>PROCESSING MODE</u>	<u>TYPE OF AGENCY SERVED</u>	<u>STATUS</u>
Activity Reporting	Both	Law Enforcement	Operational
Administration/Finance	Both	Law Enforcement	Operational
Address Index	Both	Law Enforcement	Operational
Alphabet Index	Batch	Law Enforcement	Operational
Arrests	Both	Law Enforcement	Operational
Calendaring/Scheduling	Both	Law Enforcement	Operational
Case Control	On-line	Law Enforcement	Operational
Case Disposition Reporting	On-line	Law Enforcement	Planned
Communication Processing			
Message Switching	On-line	Law Enforcement	Operational
Communication Processing			
Mobile Dig. Terminals	On-line	Law Enforcement	Operational
Communication Processing			
On-line Inquiry	On-line	Law Enforcement	Operational
Comp-Assisted Dispatch	On-line	Law Enforcement	Operational
Crime Trend Analysis	Batch	Law Enforcement	Operational
Criminal Associates	On-line	Law Enforcement	Planned
Criminal History (CCH)	On-line	Law Enforcement	Planned
Fingerprint Processing	Both	Law Enforcement	Operational
Geoprocessing	Both	Law Enforcement	Operational
Juvenile Index	Batch	Law Enforcement	Operational
Juvenile Records	Both	Law Enforcement	Operational
Modus Operandi	On-line	Law Enforcement	Operational
Physical Goods Inventory	Both	Law Enforcement	Planned
Police Personnel Records	Both	Law Enforcement	Planned

*** SYSTEM FUNCTIONS ***

<u>FUNCTION</u>	<u>PROCESSING MODE</u>	<u>TYPE OF AGENCY SERVED</u>	<u>STATUS</u>
Research/ Statistics	Batch	Law Enforcement	Operational
Stolen Licenses	Both	Law Enforcement	Operational
Stolen Property - Guns	Both	Law Enforcement	Planned
Stolen Prop.- Vehicles	Both	Law Enforcement	Operational
Stolen Prop.- Other	Both	Law Enforcement	Planned
Training	Both	Law Enforcement	Operational
Uniform Crime			
Reporting (UCR)	Batch	Law Enforcement	Operational
Victim Data Collection	Both	Law Enforcement	Operational

RESPONSIBLE AGENCY CONTACT:
 Miami Police Department
 City of Miami Department of
 Computers
 400 NW 2nd Avenue
 Miami, FL 33101
 305/579-6444

DATA PROCESSING CONTACT:
 Jeanne Trafford
 Chief Programmer
 Miami Police Department
 400 NW 2nd Avenue
 Miami, FL 33101
 305/579-6444

JURISDICTION.....MIAMI, CITY OF
 SYSTEM NAME.....Computer Aided Report Entry
 CODE NAME.....CARE
 AGENCY.....Miami Police Department
 SYSTEM USERS.....Law Enforcement
 POPULATION AREA SERVED.....440,177
 HARDWARE.....PDP 11-70; 352 K; 29 terminals
 SOFTWARE.....Cobol, Fortran, SPSS, Assembler
 ENVIRONMENT.....Dedicated
 STARTING DATE.....October, 1978
 INTERFACE.....FCIC, NCIC, DCJIS
 AVAILABILITY OF DATA.....Yes, Excluding juvenile data

NARRATIVE DESCRIPTION:

CARE assists officers in entering and retrieving field reports.

* * * SYSTEM FUNCTIONS * * *

<u>FUNCTION</u>	<u>PROCESSING MODE</u>	<u>TYPE OF AGENCY SERVED</u>	<u>STATUS</u>
-----------------	----------------------------	----------------------------------	---------------

For a description of system functions, and agency
 and data processing contacts, see Miami, City of;
 System Code Name - CAD.

JURISDICTION.....MIAMI, CITY OF
 SYSTEM NAME.....De La Rue Printpak Computerized Fingerprint System
 CODE NAME.....AFIS
 AGENCY.....Miami Police Department
 SYSTEM USERS.....Law Enforcement
 POPULATION AREA SERVED.....440,177
 HARDWARE.....PDP 11-34; 256 K; 2 terminals
 SOFTWARE.....Cobol, Fortran, SPSS, Assembler
 ENVIRONMENT.....Dedicated
 STARTING DATE.....December, 1980
 INTERFACE.....FCIC, NCIC, DCJIS
 AVAILABILITY OF DATA.....Yes, Excluding juvenile data

NARRATIVE DESCRIPTION:

AFIS assists the police department in identifying criminals
 through fingerprint standards and latent fingerprints.

* * * SYSTEM FUNCTIONS * * *

<u>FUNCTION</u>	<u>PROCESSING MODE</u>	<u>TYPE OF AGENCY SERVED</u>	<u>STATUS</u>
-----------------	----------------------------	----------------------------------	---------------

For a description of system functions, and agency
 and data processing contacts, see Miami, City of;
 System Code Name - CAD.

JURISDICTION.....POMPANO BEACH, CITY OF
 SYSTEM NAME.....Pompano Automated Law Enforcement Data Systems
 CODE NAME.....PALEDS
 AGENCY.....Data Systems Department
 SYSTEM USERS.....Law Enforcement
 POPULATION AREA SERVED.....75,000
 HARDWARE.....IBM 4331-KJ2; 3146 K; 11 terminals
 SOFTWARE.....Cobol, RPG
 ENVIRONMENT.....Dedicated
 STARTING DATE.....November, 1978
 INTERFACE.....None
 AVAILABILITY OF DATA.....Yes, Partial FED Grant

NARRATIVE DESCRIPTION:
 Not reported.

* * * SYSTEM FUNCTIONS * * *

<u>FUNCTION</u>	<u>PROCESSING MODE</u>	<u>TYPE OF AGENCY SERVED</u>	<u>STATUS</u>
Activity Reporting	Not Reported	Law Enforcement	Operational
Address Index	Not Reported	Law Enforcement	Operational
Alphabet Index	Not Reported	Law Enforcement	Operational
Arrests	Not Reported	Law Enforcement	Operational
Citation Control	Not Reported	Law Enforcement	Developmental
On-line Inquiries	Not Reported	Law Enforcement	Operational
Computer Assisted Dispatch	Not Reported	Law Enforcement	Operational
Research/Statistics	Not Reported	Law Enforcement	Operational
Vehicle Maintenance	Not Reported	Law Enforcement	Operational

RESPONSIBLE AGENCY CONTACT:
 Gerald W. Fessenden
 Data Systems Administrator
 City of Pompano Beach
 125 SW 1st Avenue
 Pompano Beach, FL 33060
 305/786-4079

DATA PROCESSING CONTACT:
 Jay Sporkin
 Systems and Programming
 Manager
 125 SW 1st Avenue
 Pompano Beach, FL 33060
 305/786-4078

JURISDICTION.....SARASOTA, CITY OF
 SYSTEM NAME.....Advanced Information Management for Law Enforcement
 CODE NAME.....AIM
 AGENCY.....Sarasota Police Department
 SYSTEM USERS.....Law Enforcement
 POPULATION AREA SERVED.....51,000
 HARDWARE.....Hewlett Packard 3000 Series III 1.5M Core Memory and 3-120M
 disk drives; 1 tape drive, 2 line printers, 19 terminals;
 3-HP-125 Micro; HP-120; graphics plotter
 SOFTWARE.....Cobol, Fortran, Basic, RPG
 ENVIRONMENT.....Dedicated
 STARTING DATE.....November, 1981
 INTERFACE.....Planned - FCIC, Fall 1984
 AVAILABILITY.....Yes, request for the information must be from a recognized
 source and they must obtain approval from the Chief of Police

NARRATIVE DESCRIPTION:

A.I.M. is an on-line realtime information system developed for the Sarasota Police Department by Interactive Computer Applications Development Inc., of Sarasota, FL. The system design took full advantage of Hewlett Packard's "Image" Data Base Management System and "View 3000", HP's Screen Designing and Information Handling Sub-System. The system eliminates redundancy in entering and provides multiple inquiry paths for all functions utilized. All input to the system is accomplished on forms displayed on terminals. The forms have full screen editing capabilities. All data is edited at the time of entry. Data type, code, validity, required fields and proper relationship between fields are checked. If an error is detected, the field is highlighted and a sentence describing the error is displayed at the bottom of the screen. On-line reports and activity totals are available from all subsets. Off-line hardcopy reports are spooled to assure no programs are kept waiting for printer access. State Uniform Crime Reports are produced on tape for forwarding to Tallahassee. Purge and lengthy journal reports are produced on tape for conversion to micro-fishe. Maximum use has been made of micro-computers, which interface with the mainframe, to produce documents and special administrative reports. The micro-computers can function as an interactive terminal on the main information system or as a "stand alone" capable of performing word processing, graphics and special report production. System design also produced a user oriented system with multiple menus which makes for quick training of new personnel and ease of operation. Planned projects include completion of certain functions associated with crime analysis and computer assisted dispatching.

*** SYSTEM FUNCTIONS ***

FUNCTION	PROCESSING MODE	TYPE OF AGENCY SERVED	STATUS
Activity Reporting	Both	Law Enforcement	Operational
Alphabetic Index	Both	Law Enforcement	Operational
Arrests	Both	Law Enforcement	Operational
Case Control & Disposition	On-line	Law Enforcement	Operational
Citation Control	Both	Law Enforcement	Operational
On-line Inquiry	Both	Law Enforcement	Operational
Computer Aided Dispatch	On-line	Law Enforcement	Planned
Crime Trend Analysis	Both	Law Enforcement	Developed
Evidence Control	Both	Law Enforcement	Operational
Field Contact Reporting	Both	Law Enforcement	Operational
Firearms Registration	Both	Law Enforcement	Operational
Geoprocessing	Both	Law Enforcement	Planned
Licensing/Registration	Both	Law Enforcement	Operational
Micrographics	Off-line	Law Enforcement	Operational
Modus Operandi Intelligence/ Organized Crime	Both	Law Enforcement	Operational
Performance Evaluation	Both	Law Enforcement	Operational
Physical Goods Inventory	Both	Law Enforcement	Operational
Personnel Records	Both	Law Enforcement	Operational
Research Statistics & Resource	Both	Law Enforcement	Operational
Stolen Property & Bought-Sold-Pawned Property	Both	Law Enforcement	Operational
Training	Both	Law Enforcement	Operational
Uniform Crime Reporting	Both	Law Enforcement	Operational
Work Load Analysis	Both	Law Enforcement	Operational

Note: Though the initial entry is a batch process from the source document the system functions were designed as a primary on-line process.

RESPONSIBLE AGENCY CONTACT:
Stanley Carter, Captain
Sarasota Police Department
2050 Ringling Blvd.
Sarasota, FL 33578
813/366-8000 Ext. 291

DATA PROCESSING CONTACT:
Same

Appendix A

LOCAL AUTOMATED CRIMINAL JUSTICE INFORMATION SYSTEM QUESTIONNAIRE

Respondent's Name: _____ Title: _____

Address: _____

(Agency Name)

(Street Address)

(City)

() - ()

(Zip Code)

(Telephone Number)

Jurisdiction : _____

1. Name of Information System : _____

Short Title (Acronym) : _____

2. Name of agency which has fiscal and/or operating responsibility for the system:

Agency : _____

Address : _____

Telephone : _____

3. Who are the primary users of the system?

___ Law Enforcement

___ Courts (Includes State Attorney & Public Defender)

___ Corrections (Includes Probation & Parole)

___ Other - Please specify _____

4. What is the approximate size of the jurisdiction served by the system?

_____ Population

5. What type of computer hardware does the system have? Please list type and number including the number of terminals and core size.

EXAMPLES OF FUNCTIONS PERFORMED

Activity Reporting	Jury Selection and Management
Administration/ Finance	Juvenile Index
Address Index	Juvenile Records
Alimony Control	Legal Information Retrieval
Alphabetic Index	Licensing/ Registration (Not Auto,
Arrests	Driver or Firearms)
Assignment - Attorneys	Menu Planning
Assignment - Courtrooms	Micrographics
Assignment - Judges	Missing Persons
Auto Registration	Modus Operandi
Automated Vehicle Location	Narcotics Control
Calendering/ Scheduling	Offender Based Transaction Statistics
Case Control	(OBTS)
Case Disposition Reporting	Organized Crime
Child/ Family Support	Parole Control
Citation Control	Performance Evaluation
Command and Control	Physical Goods Inventory
Communications Processing -	Planning
Message Switching	Police Personnel Records
Communications Processing -	Prison Industries
Mobile Digital Terminals	Prisoner Behavior Modeling
Communications Processing -	Probation Control
On-Line Inquiry	Process Service Control
Communications Processing -	Prosecution Management Information
Other	System (PROMIS)
Computer- Assisted Dispatch	Rehabilitation
Computer- Assisted Instruction	Research/ Statistics
Corrections Personnel Records	Resource Allocation
Courts Personnel Records	Simulation Modeling
Crime Lab	Speedy Trial
Crime Trend Analysis	Stolen Licenses
Criminal Associates	Stolen Property - Guns
Criminal History (CCH)	Stolen Property - Vehicles
Custody/ Bond Status	Stolen Property - Other
Defendant Control	Subjects-in-Process
Docketing	Summons Control
Driver Registration	Traffic
(Includes Driver History,	Training
Revocations, Suspensions, etc.)	Trust Fund Accounting
Evidence Control	Uniform Crime Reporting (UCR)
Field Contact Reporting	Vehicle Inspection
Fine and Bail Collection Control	Vehicle Maintenance
Fingerprint Processing	Victim Data Collection System (VDCS)
Firearms Registration	Warrant Control
Geoprocessing (Geocoding)	Warrants/ Wanted Persons
Grant Tracking (Automated Financial	White Collar Crime
and Grant Accounting for Criminal	Witness Control
Justice Projects)	Work Load Analysis
Inmate Population Accounting	
Inmate Records	
Jail Information System (JIS)	

12. Are data from your system available for research and/or statistical analysis purposes?

No
 Yes

Please specify limitations or restrictions on release of data, if any.

13. Who can be contacted for further information about the system? If same as individual listed at beginning of questionnaire, write Same.

Name : _____

Title : _____

Address : _____

Phone : () - - _____

14. Are you aware of any other criminal justice information system(s) in operation within your county?

No
 Yes

If yes, please give name and telephone number of contact person(s).

Name: _____

Phone: () - - _____

Name: _____

Phone: _____

THANK YOU VERY MUCH FOR FILLING OUT THIS QUESTIONNAIRE

Appendix B

Evaluation and Information Form

Interested readers are encouraged to respond to this self-addressed form. Thank you for your feedback.

Jurisdiction _____ Date _____

Respondent's Name _____

Title " _____

Address _____

Phone () _____

____ Our Automated Criminal Justice Information System was not included in the 1983 Directory. Please send a copy of the questionnaire so our system will be included in any future editions.

____ Our entry in the 1983 Directory is erroneous. Please telephone me for corrections.

____ Our entry in the 1983 Directory is erroneous. Corrections are enclosed.

My overall impression of this 1983 Directory is:

____ Very Positive

____ Positive

____ Neutral

____ Negative

____ Very Negative

Comments _____

Cut Along Dotted Line

END