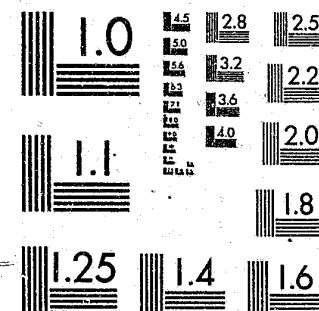


National Criminal Justice Reference Service

ncjrs

This microfiche was produced from documents received for inclusion in the NCJRS data base. Since NCJRS cannot exercise control over the physical condition of the documents submitted, the individual frame quality will vary. The resolution chart on this frame may be used to evaluate the document quality.



MICROCOPY RESOLUTION TEST CHART
NATIONAL BUREAU OF STANDARDS-1963-A

Microfilming procedures used to create this fiche comply with the standards set forth in 41CFR 101-11.504.

Points of view or opinions stated in this document are those of the author(s) and do not represent the official position or policies of the U. S. Department of Justice.

National Institute of Justice
United States Department of Justice
Washington, D. C. 20531

2/21/86

ICPSR

Inter-university Consortium for
Political and Social Research

Reactions to Crime Project, 1977

(Chicago, Philadelphia,
San Francisco):

Survey on Fear of Crime and Citizen Behavior

Center for Urban Affairs and
Policy Research

ICPSR 8162

96100

96100

U.S. Department of Justice
National Institute of Justice

This document has been reproduced exactly as received from the person or organization originating it. Points of view or opinions stated in this document are those of the authors and do not necessarily represent the official position or policies of the National Institute of Justice.

Permission to reproduce this copyrighted material has been granted by

Public Domain/NIJ

U.S. Dept. of Justice

to the National Criminal Justice Reference Service (NCJRS).

Further reproduction outside of the NCJRS system requires permission of the copyright owner.

REACTIONS TO CRIME PROJECT, 1977
[CHICAGO, PHILADELPHIA, SAN FRANCISCO]:
SURVEY ON FEAR OF CRIME AND CITIZEN BEHAVIOR
(ICPSR 8162)

Principal Investigator

Center for Urban Affairs
and Policy Research

Northwestern University

First ICPSR Edition
Spring, 1984

Inter-university Consortium for
Political and Social Research
P.O. Box 1248
Ann Arbor, Michigan 48106

ACKNOWLEDGEMENT OF ASSISTANCE

All manuscripts utilizing data made available through the Consortium should acknowledge that fact as well as identify the original collector of the data. The ICPSR Council urges all users of the ICPSR data facilities to follow some adaptation of this statement with the parentheses indicating items to be filled in appropriately or deleted by the individual user.

The data (and tabulations) utilized in this (publication) were made available (in part) by the Inter-university Consortium for Political and Social Research. The data for the REACTIONS TO CRIME PROJECT, 1977 [CHICAGO, PHILADELPHIA, SAN FRANCISCO]: SURVEY ON FEAR OF CRIME AND CITIZEN BEHAVIOR were originally collected by the Center for Urban Affairs and Policy Research at Northwestern University. Neither the collector of the original data nor the Consortium bear any responsibility for the analyses or interpretations presented here.

In order to provide funding agencies with essential information about the use of archival resources and to facilitate the exchange of information about ICPSR participants' research activities, each user of the ICPSR data facilities is expected to send two copies of each completed manuscript or thesis abstract to the Consortium. Please indicate in the cover letter which data were used.

TABLE OF CONTENTS

	PAGE NO.
INTRODUCTION	
Data Collection Description	i
Data Collection Procedures and Sampling Information	i
Weighting Information	iii
Related Publications	iii
File Structure	iv
Codebook Information	v
ICPSR Processing Information	vii
VARIABLE DESCRIPTION LIST	viii
CODEBOOK	1
FREQUENCY ADDENDUM	

INTRODUCTION

DATA COLLECTION DESCRIPTION

This survey was conducted by the Center for Urban Affairs at Northwestern University. Its purpose was to gather information for two investigations which analyzed the impact of crime on the lives of city dwellers. These were the Reactions to Crime (RTC) Project which was supported by the U.S. Department of Justice's National Institute of Justice as part of its Research Agreements Program, and the Rape Project which was supported by the National Center for the Prevention and Control of Rape, a sub-division of the National Institute of Mental Health. Both projects were concerned with individual responses to crime and the impact of fear of crime on day-to-day behavior. The RTC Project was also interested in collective responses to crime--how individuals band together to deal with crime problems and the Rape Project was specifically concerned with sexual assault and its consequences for the lives of women.

Respondents were asked a number of questions which called for self-reports of behavior. These included questions about events and conditions in their home areas, their relationship to their neighbors, who they knew and visited around their homes, and what they watched on TV and read in the newspapers. Also included were several questions measuring respondents' perceptions of the extent of crime in their communities, whether they knew someone who had been a victim, and what they had done to reduce their own chances of being victimized. Finally, there were a number of specific questions about sexual assault, some of which were asked only of women.

DATA COLLECTION PROCEDURES AND SAMPLING INFORMATION

Three cities were selected for study: Chicago, Philadelphia, and San Francisco. Within each of these cities extensive data on three or four neighborhoods was gathered. Sites were selected which provided variation along a number of dimensions--ethnicity, class, crime, and levels of organizational activity. The boundaries of the neighborhoods were determined by the perceptions of area residents interviewed during the fieldwork phase of the

project, and were not drawn to match any convenient, pre-existing geographical sub-units. In addition to the neighborhood samples, a small city-wide sample was drawn from each city. The neighborhood samples range in size from approximately 200 (in four of the sites) to 450 (in six areas). The larger samples were those in which female respondents were oversampled. The city-wide component of the survey was designed to reach randomly-selected adults in 540 households in each city. In total, approximately 1640 interviews were to be conducted in Philadelphia and San Francisco, and 1840 in Chicago.

This survey was carried out by the Market Opinion Research Corporation between October and December, 1977, using a telephone interview scheme. Questionnaire preparation and initial pretesting, along with all sampling and telephone number preparation, was conducted at Northwestern. Random Digit Dialing (RDD) techniques were employed for selecting respondents. Prospective telephone numbers were produced through the following process. First, three-digit prefixes serving the target areas were gathered and screened. Then, using a special computer program, random four-digit numbers were attached to each prefix. Finally the resulting seven-digit phone numbers were screened again.

Each number for an area or city was called in turn. For numbers which appeared to be operating, a total of five calls were made, spread over days and shifts, to reach a responsible adult. An early screen question took out commercial or institutional phones which had been missed in the other screenings. Another checked each household in a neighborhood sample to make sure it lay within the specified area boundaries. A total of 3 call-backs were made to find an adult at home to serve as a household informant. This informant was quizzed to establish the composition of the household, and a respondent (18 or older) then was randomly selected using a Trodahl-Carter-Bryant selection matrix. (Because of the substantive interests of the Rape Project, female respondents were oversampled in several of the neighborhood surveys. Oversampling of females was accomplished by manipulating the use of the Trodahl-Carter-Bryant respondent selection matrix so that they were more likely to be randomly selected.) As many as four call-backs could be made to arrange an interview with this respondent. A total of 5,121 interviews were completed.

WEIGHTING INFORMATION

In addition to the areas in which females were deliberately over-sampled, several samples (notably Chicago and Philadelphia City-wide, Back of the Yards, and Woodlawn) included somewhat too many women. Therefore every sample was weighted using the appropriate city-wide criterion. Operationally, this was accomplished in the following manner: a weighting variable called SEXWT was created which had a value 1.0 for all males, while females in each sample were given weights calculated using the 1970 city census:

$$\text{SEXWT} = \frac{\# \text{ of females in city census}}{\# \text{ of males in city census}} \times \frac{\# \text{ of males in sample}}{\# \text{ of females in sample}}$$

To correct for the increased probability of reaching households with multiple phone lines, all cases were weighted by the inverse of the number of phone lines in the household (TELEWT).

RELATED PUBLICATIONS

Lewis, Dan A. and Michael G. Maxfield. 1980. "Fear in the Neighborhoods: An Investigation of the Impact of Crime." JOURNAL OF RESEARCH IN CRIME AND DELINQUENCY 17 (July): 160-189.

Podolefsky, Aaron and Fredric DuBow. 1981. STRATEGIES FOR COMMUNITY CRIME PREVENTION: COLLECTIVE RESPONSES TO CRIME IN URBAN AMERICA. Springfield, IL: Charles C. Thomas Publishing Co.

Riger, Stephanie and Paul J. Lavrakas. 1981. "Community Ties: Patterns of Attachment and Social Interaction in Urban Neighborhoods." AMERICAN JOURNAL OF COMMUNITY PSYCHOLOGY 9 (No. 1): 55-66.

Skogan, Wesley G. and Michael G. Maxfield. 1981. COPING WITH CRIME: INDIVIDUAL AND NEIGHBORHOOD REACTIONS, Beverly Hills, CA: Sage Publications.

Tyler, Tom R. 1980. "Impact of Directly and Indirectly Experienced Events: The Origin of Crime-Related Judgments and Behaviors." JOURNAL OF PERSONALITY AND SOCIAL PSYCHOLOGY 39 (No. 1): 13-28.

FILE STRUCTURE

Reaction to Crime Project, 1977 [Chicago, Philadelphia, San Francisco]: Survey on Fear of Crime and Citizen Behavior is available from the ICPSR in two formats: card-image and OSIRIS. The card-image file contains several decks per case in a format based on 80 column punched cards. The data are sorted by case with all decks for a case together in ascending order.

The OSIRIS dictionary gives the format and other information for each variable in the OSIRIS data file. The dictionary or dictionary-codebook file is used in conjunction with the OSIRIS software package. The OSIRIS data file is constructed with a single logical record for each case. There are 206 variables on 5,121 cases. The data are not weighted.

The OSIRIS data file can be accessed directly through software packages or programs which do not use the OSIRIS dictionary by specifying the tape locations of the desired variables. These tape locations are given in the OSIRIS dictionary-codebook.

CODEBOOK INFORMATION

The example below is a reproduction of information appearing in the machine-readable codebook for a typical variable. The numbers in brackets do not appear but are references to the descriptions which follow this example.

.....
 [1] VAR 0013 [2] V4: PEOPLE ON STREET-DRK [3] MD=7 OR GE 8
 REF 0013 [4] LOC 26 WIDTH 1 [5] DK 1 COL 28
 [6] IMP DEC= d

[7] How many people would you say are usually out walking
 on the street in front of where you live after dark
 -- a lot, some, a few or almost none?

[8]

[9] SEE NOTE(S) X

[10] Actual number is coded.

[11] [12]

01. Almost none
 02. A few
 03. Some
 04. A lot

07. DK
 08. NA

[1] Indicates the variable and reference numbers. A variable number and a reference number are assigned to each variable in the data collection. In the present codebook which documents the archived data collection these numbers are identical. Should the data be subsetted or rearranged by an OSIRIS program (e.g., MMP to intersperse data from another source, or TCOT to produce an analysis deck), the variable numbers would change to reflect the order of the new data collection, while the reference number would remain unchanged to reflect the variable number in the codebook describing the archived data collection.

- [2] Indicates the abbreviated variable name (maximum of 24 characters) used in the OSIRIS system to identify the variable for the user. An expanded version of the variable name can be found in the variable description list.
- [3] Indicates the code values of missing data. In this example, code values equal to 7 or greater than or equal to 8 are missing data (MD=7 OR GE 8). Alternative statements for other variables are "MD=0," "MD GE 9," or "NO MISSING DATA CODES." Some analysis software packages (including the OSIRIS software package) require that certain types of data which the user desires to be excluded from analysis be designated as "MISSING DATA," e.g., inappropriate, unascertained, unascertainable, or ambiguous data categories. Although these codes are defined as missing data categories, this does not mean that the user should not or cannot use them in a substantive role if so desired.
- [4] Indicates the starting location and width of this variable when the data are stored on a magnetic tape in the OSIRIS format. If the variable is of a multiple-response type, the width referenced is that of a single response. In this example the variable named "V4: PEOPLE ON STREET-DRK" is 1 column wide and is located in the 26th column within the record.
- [5] Indicates the location by deck and column of this variable when the data are stored on cards or in card-image format (80-column format).
- [6] A variable containing data with implied decimals is denoted by the message "IMP DEC= d," where d is the number of decimal places implied in the variable.
- [7] This is the full text (question) supplied by the investigator to describe the variable. The question text and the numbers and letters that may appear at the beginning reflect the original wording of the questionnaire item.
- [8] Indicates an additional comment or explanation appended to the variable description.
- [9] A variable which has a footnote associated with it is denoted by the message, "SEE NOTE(S) X" where X is the number of the footnote referenced.

- [10] "Actual number is coded" appears in the codebook to indicate that the variable has been declared continuous.
- [11] Indicates the code values occurring in the data for this variable.
- [12] Indicates the textual definitions of the codes. Abbreviations commonly used in the code definitions are "DK" (Do Not Know), "NA" (Not Ascertained), and "INAP" (Inappropriate).

ICPSR PROCESSING INFORMATION

The data collection was processed according to the standard ICPSR processing procedures. The data were checked for illegal or inconsistent code values which, when found, were recoded to OSIRIS missing data values. No consistency checks were performed. Statements bracketed in "[" and "]" signs in the body of the codebook were added by the processors for explanatory purposes.

VARIABLE DESCRIPTION LIST

ICPSR PROCESSING VARIABLES

- 1 ICPSR study number-8162
- 2 ICPSR edition number-1
- 3 ICPSR part number-1
- 4 ICPSR sequential case identification number

IDENTIFIERS AND WEIGHTS

- 5 Area
- 6 Number of phone lines
- 7 Telephone weight
- 8 Sex of Respondent
- 9 Sex weight

NEIGHBORHOOD CHARACTERISTICS

- 10 Recognizing a stranger in the neighborhood is easy/difficult
- 11 R feels a part of the neighborhood/sees it just as a place to live
- 12 Neighborhood is changing for better/worse
- 13 Number of people on the street after dark
- 14 R tries to keep an eye on what is going on in the street

--If Neighbors Saw Suspicious Action, They Would--

- 15 Check the situation
- 16 Call the police
- 17 Ignore it
- 18 Call someone else
- 19 Call the Respondent
- 20 Other
- 21 Don't know/not ascertained

- 22 Number of times R has visited a neighbor in last 2 weeks
- 23 Number of kids in the neighborhood which R knows by name

RESPONDENT'S ATTITUDE TOWARD OTHER'S BEHAVIOR

- 24 Kids are better today than in the past
- 25 People don't respect others as much as they used to
- 26 Groups of neighbors can reduce crime

- 27 There are a lot of crazy people in the city
- 28 Police can't do much to stop crime

NEIGHBORHOOD GROUPS/ORGANIZATIONS

- 29 R has gathered with others to discuss neighborhood problems
- 30 R knows of community groups/organizations in the neighborhood
- 31 R is involved with community groups/organizations
- 32 Type of community organization - 1st mention
- 33 Type of community organization - 2nd mention
- 34 Type of community organization - 3rd mention
- 35 Type of community organization - 4th mention
- 36 Number of groups R is involved with

--First Organization--

- 37 Organization has taken some action against neighborhood crime
- 38 Stop crime strategy - 1st mention
- 39 Stop crime strategy - 2nd mention
- 40 R took part in the activities
- 41 Effectiveness of the organized action

--Second Organization--

- 42 Organization has taken some action against neighborhood crime
- 43 Stop crime strategy - 1st mention
- 44 Stop crime strategy - 2nd mention
- 45 R took part in the activities
- 46 Effectiveness of the organized action

--Third Organization--

- 47 Organization has taken some action against neighborhood crime
- 48 Stop crime strategy - 1st mention
- 49 Stop crime strategy - 2nd mention
- 50 R took part in the activities
- 51 Effectiveness of the organized action

- 52 Other special crime effort/program in neighborhood
- 53 Crime prevention program - 1st mention
- 54 Crime prevention program - 2nd mention
- 55 Crime prevention program - 3rd mention

RESPONDENT'S CONTACT WITH THE POLICE

- 56 R has contacted the police in the last year

--Reason for Respondent's Last Call to the Police--

- 57 Report crime against self
- 58 Report crime against another
- 59 Report general crime in neighborhood
- 60 Lack of police protection/request increase
- 61 Complaints about specific officer or incidents
- 62 Request general information
- 63 Public services problem
- 64 Request ambulance
- 65 Other
- 66 Don't know/not ascertained/inappropriate

RESPONDENT'S CONTACT WITH PUBLIC OFFICIALS

- 67 R has contacted a public official in the last year

--Reason for Respondent's Last Call to Public Official--

- 68 Report crime against self
- 69 Report crime against another
- 70 Report general crime in neighborhood
- 71 Lack of police protection/request increase
- 72 Complaints about specific officer or incidents
- 73 Request general information
- 74 Public services problem
- 75 Request ambulance
- 76 Other
- 77 Don't know/not ascertained/inappropriate

CRIME-RELATED PROBLEMS IN NEIGHBORHOOD

- 78 Teenagers hanging out on the street
- 79 Abandoned/burned out buildings
- 80 People using illegal drugs
- 81 Vandalism

- 82 There was a time when crime was less of a problem
- 83 Number of years ago crime was less of a problem

--Burglary--

- 84 Burglary is a neighborhood problem
- 85 R knows a burglary victim
- 86 Break-ins happened in present neighborhood
- 87 Number of neighborhood burglaries in the last year
- 88 R thinks it's likely - attempted robbery at own house
- 89 Actual breakins at R's home
- 90 Most important things for keeping house safe from burglary

--Measures for Protection Against Burglary--

- 91 Engraved valuables
- 92 Bars/special locks on windows
- 93 Peep-hole in door
- 94 Leave light on at night while out
- 95 When R was away from home - R notified police
- 96 When R was away from home - R had deliveries stopped
- 97 When R was away from home - R had neighbor watch house

--Robbery--

- 98 Street robbery is a neighborhood problem
- 99 R thinks it's likely - R will be robbed on neighborhood street
- 100 R knows a robbery victim
- 101 Location - 1st robbery
- 102 Location - 2nd robbery
- 103 Location - 3rd robbery

--Assault--

- 104 Assault by strangers is a neighborhood problem
- 105 R thinks it's likely - R will be assaulted by a stranger in the neighborhood
- 106 R knows an assault victim
- 107 Location - 1st assault
- 108 Location - 2nd assault
- 109 Location - 3rd assault
- 110 Kind of people who are attacked/robbed in neighborhood
- 111 Sex of victims in neighborhood
- 112 Number of times R was outside after dark last week
- 113 Number of times R has gone to evening entertainment in last 2 weeks

--Measures for Protection Against Robbery/Assault--

- 114 Go out with someone after dark
- 115 Drive rather than walk at night due to crime
- 116 Take dog, whistle, etc. for protection at night against crime
- 117 Avoid certain areas at night due to crime
- 118 Distance from home to area avoided (in blocks)
- 119 How safe R feels alone in neighborhood at night
- 120 How safe R feels alone in neighborhood during the day

RESPONDENT'S SOURCES OF INFORMATION

--Television--

- 121 Hours spent watching TV last night

- 122 R watched national news shows
- 123 R watched local news shows
- 124 R watched police or crime shows

--Newspapers--

- 125 R read daily newspapers
- 126 Daily newspaper read - 1st mention
- 127 Daily newspaper read - 2nd mention
- 128 Daily newspaper read - 3rd mention
- 129 Daily newspaper read - 4th mention
- 130 Daily newspaper read - 5th mention
- 131 Daily newspaper read - 6th mention
- 132 Read local newspaper regularly
- 133 Read crime stories yesterday
- 134 Remember particular crime story
- 135 Remembered crime story - 1st mention
- 136 Remembered crime story - 2nd mention

- 137 Best source of crime information in neighborhood

--Communication with People--

- 138 R has talked about crime with someone recently
- 139 Person to whom R talked
- 140 Talked about rape/sexual assault last month

ADDITIONAL NEIGHBORHOOD PROBLEM - SEXUAL ASSAULT/RAPE

- 141 Sexual assault is a neighborhood problem
- 142 Number of rapes in neighborhood are decreasing/increasing
- 143 Number of women sexually assaulted/raped in neighborhood in last year

--For Female Respondents Only--

- 144 R thinks it's likely - R will be sexually assaulted in the next year
- 145 R's level of fear of sexual assault/rape when out alone after dark in neighborhood
- 146 R knows a sexual assault victim
- 147 Sexual assault victim was Respondent/another
- 148 Report sexual assault to police
- 149 When sexual assault took place
- 150 Location - 1st sexual assault
- 151 Location - 2nd sexual assault
- 152 Location - 3rd sexual assault

--For Male Respondents Only--

- 153 R thinks it's likely - A woman will be sexually assaulted in the neighborhood
- 154 R knows a sexual assault victim
- 155 Location - 1st sexual assault

- 156 Location - 2nd sexual assault
- 157 Location - 3rd sexual assault

--Sexual Assault/Rape Prevention--

- 158 Stronger home security measures
- 159 Women shouldn't go out alone at night
- 160 Women should dress more modestly
- 161 Provide psychological therapy for rapists
- 162 Women should learn self-defense
- 163 Women should carry weapons for protection
- 164 Newspapers should publicize known rapists
- 165 Women should not talk to strangers
- 166 Stop women's rights and women's liberation
- 167 Rape victims should fight back
- 168 Increase men's respect for women
- 169 Rape prevention idea - 1st mention
- 170 Rape prevention idea - 2nd mention
- 171 Best rape prevention idea

DEMOGRAPHIC INFORMATION

- 172 Number of years R has lived in neighborhood
- 173 Type of residence
- 174 Own or rent home
- 175 R expects to live in neighborhood 2 years
- 176 R carries theft insurance
- 177 Education
- 178 Number of children
- 179 Employment situation
- 180 Occupation
- 181 Total household income

--Ethnic background--

- 182 Puerto Rican
- 183 Mexican
- 184 Cuban
- 185 Other Latin
- 186 Polish
- 187 Italian
- 188 Irish
- 189 Croatian
- 190 Other European
- 191 Afro-American
- 192 Chinese
- 193 Japanese
- 194 Other Asian
- 195 Other
- 196 Refused/don't know/not ascertained

- 197 Race
- 198 Native or foreign born
- 199 Phone listed/unlisted
- 200 Number of additional phone numbers

201 Age

--Observations by Interviewer--

- 202 Quality of Respondent's English
- 203 Spanish interview
- 204 Respondent's cooperativeness
- 205 Respondent's interest
- 206 Respondent's accuracy

DECK IDENTIFICATION NUMBER IS '01'

DK 1 COL 1- 2

VAR 0001 ICPSR STUDY NUMBER-8162 NO MISSING DATA CODES
REF 0001 LOC 1 WIDTH 4 DK 1 COL 3- 6

ICPSR Study Number - 8162

8162. The ICPSR has attached this number as a unique data collection identification number.

VAR 0002 ICPSR EDITION NUMBER-1 NO MISSING DATA CODES
REF 0002 LOC 5 WIDTH 1 DK 1 COL 7

ICPSR Edition Number - 1

The number identifying the release edition of the data collection.

1. Spring, 1984 release

VAR 0003 ICPSR PART NUMBER-1 NO MISSING DATA CODES
REF 0003 LOC 6 WIDTH 1 DK 1 COL 8

ICPSR Part Number - 1

1. The entire data collection is contained in one part.

VAR 0004 ICPSR SEQUENCE NUMBER NO MISSING DATA CODES
REF 0004 LOC 7 WIDTH 4 DK 1 COL 9-12

ICPSR Sequential Case Identification Number

(CONTINUED)

The ICPSR has attached a sequential case identification number to every record. This number uniquely identifies each record in the data collection.

VAR 0005 AREA NO MISSING DATA CODES
REF 0005 LOC 11 WIDTH 2 DK 1 COL 13-14

Area [Neighborhood Identification Number]

Philadelphia

- 11. West Philadelphia
- 12. South Philadelphia
- 13. Logan
- 15. Philadelphia Citywide

Chicago

- 21. Lincoln Park
- 22. Wicker Park
- 23. Woodlawn
- 24. Back of the Yards
- 25. Chicago Citywide

San Francisco

- 31. Sunset
- 32. Visitacion Valley
- 33. Mission
- 35. San Francisco Citywide

VAR 0006 NUMTELE NO MISSING DATA CODES
REF 0006 LOC 13 WIDTH 1 DK 1 COL 15

Number of different phone lines in Respondent's household

Actual number is coded.

VAR 0007 TELEWT NO MISSING DATA CODES
REF 0007 LOC 14 WIDTH 3 DK 1 COL 16-18
IMP DEC= 2

Telephone Weight

Inverse of the number of different phone lines in Respondent's household. [This weighting variable corrects for the increased probability of reaching a household with multiple phone lines.]

Actual number is coded.

VAR 0008 SEX NO MISSING DATA CODES
REF 0008 LOC 17 WIDTH 1 DK 1 COL 19

Sex of Respondent

- 1. Male
- 2. Female

VAR 0009 SEXWT NO MISSING DATA CODES
REF 0009 LOC 18 WIDTH 5 DK 1 COL 20-24
IMP DEC= 4

Sex Weight

This variable corrects for the deliberately skewed sex distribution of some subsamples. Females for each subsample are assigned a value which was calculated using the appropriate 1970 city census. All males are assigned the value of 1.0000. (See also the Weighting Information section in the Introduction.)

Weight values and associated subsamples

- 0.4221 Females in West Philadelphia
- 0.5138 Females in South Philadelphia
- 0.5174 Females in Visitacion Valley
- 0.5180 Females in Woodlawn
- 0.6171 Females in Wicker Park

(CONTINUED)

0.6309 Females in Sunset
 0.7038 Females in Back of the Yards
 0.7650 Females in Chicago Citywide
 0.7685 Females in Lincoln Park
 0.8077 Females in Philadelphia Citywide
 0.9754 Females in San Francisco Citywide
 1.0000 All males
 1.0470 Females in Logan
 1.2430 Females in Mission

VAR 0010 V1: TELLING STRNGR IN NE MD=7 OR GE 8
 REF 0010 LOC 23 WIDTH 1 DK 1 COL 25

First of all, I have a few questions about your neighborhood.

In general, is it pretty easy or pretty difficult for you to tell a stranger in your neighborhood from somebody who lives there?

1. Pretty easy
2. Pretty difficult
7. DK
8. NA

VAR 0011 V2: FEEL PART OF NEIGHBO MD=7 OR GE 8
 REF 0011 LOC 24 WIDTH 1 DK 1 COL 26

Would you say that you really feel a part of your neighborhood or do you think of it more as just a place to live?

1. Feel a part
2. Place to live
7. DK
8. NA

VAR 0012 V3: NEIGHBORHD CHANGING MD=7 OR GE 8
 REF 0012 LOC 25 WIDTH 1 DK 1 COL 27

Would you say that your neighborhood has changed for the better, or for the worse in the past couple of years, or has it stayed about the same?

1. Better
2. Same
3. Worse
7. DK
8. NA

VAR 0013 V4: PEOPLE ON STREET-DRK MD=7 OR GE 8
 REF 0013 LOC 26 WIDTH 1 DK 1 COL 28

How many people would you say are usually out walking on the street in front of where you live after dark -- a lot, some, a few or almost none?

1. Almost none
2. A few
3. Some
4. A lot
7. DK
8. NA

VAR 0014 V5: KEEP EYE ON STREET I MD=7 OR GE 8
 REF 0014 LOC 27 WIDTH 1 DK 1 COL 29

Do you usually try to keep an eye on what is going on in the street in front of your house or do you usually not notice?

1. Usually keep an eye on
2. Usually don't notice

(CONTINUED)

7. DK
8. NA

.....
VAR 0015 V6: SUSP ACTION:CHCK SIT MD=8
REF 0015 LOC 28 WIDTH 1 DK 1 COL 30

If your neighbors saw someone suspicious trying to open your door or window what do you think they would do?

Check situation

1. Mentioned
8. Not mentioned

.....
VAR 0016 V7: SUSP ACTION:CALL POL MD=8
REF 0016 LOC 29 WIDTH 1 DK 1 COL 31

If your neighbors saw someone suspicious trying to open your door or window what do you think they would do?

Call police

1. Mentioned
8. Not mentioned

.....
VAR 0017 V8: SUSP ACTION:IGNORE MD=8
REF 0017 LOC 30 WIDTH 1 DK 1 COL 32

If your neighbors saw someone suspicious trying to open your door or window what do you think they would do?

Ignore it

(CONTINUED)

1. Mentioned
8. Not mentioned

.....
VAR 0018 V9: SUSP ACTION:CALL ANO MD=8
REF 0018 LOC 31 WIDTH 1 DK 1 COL 33

If your neighbors saw someone suspicious trying to open your door or window what do you think they would do?

Call someone else (landlord, janitor, etc.)

1. Mentioned
8. Not mentioned

.....
VAR 0019 V10: SUSP ACTION:CALL R MD=8
REF 0019 LOC 32 WIDTH 1 DK 1 COL 34

If your neighbors saw someone suspicious trying to open your door or window what do you think they would do?

Call me/Respondent

1. Mentioned
8. Not mentioned

.....
VAR 0020 V11: SUSP ACTION:DO OTHR MD=8
REF 0020 LOC 33 WIDTH 1 DK 1 COL 35

If your neighbors saw someone suspicious trying to open your door or window what do you think they would do?

Other (SPECIFY)

(CONTINUED)

1. Mentioned
8. Not mentioned

.....

VAR 0021	V12: SUSP ACTION:DK NA	MD=7 OR GE 8
REF 0021	LOC 34 WIDTH 1	DK 1 COL 36

If your neighbors saw someone suspicious trying to open your door or window what do you think they would do?

Don't know/Not ascertained

7. DK
8. NA

.....

VAR 0022	V13: TIMES VISIT NEIGHBO	MD=98 OR GE 99
REF 0022	LOC 35 WIDTH 2	DK 1 COL 37-38

In the last two weeks, about how many times have you gone into a neighbor's home to visit?

Actual number is coded.

97. Over 100
98. NA
99. DK

.....

VAR 0023	V14: # OF KIDS KNOW NAME	MD=7 OR GE 8
REF 0023	LOC 37 WIDTH 1	DK 1 COL 39

How about kids in your immediate neighborhood. How many of them do you know by name -- all of them, some, hardly any, or none of them?

(CONTINUED)

1. None
2. Hardly any
3. Some
4. All
5. No kids here
7. DK
8. NA

.....

VAR 0024	V15: KIDS BETTER TODAY T	MD=8 OR GE 9
REF 0024	LOC 38 WIDTH 1	DK 1 COL 40

Next, I'm going to read some comments that people make about how other people behave. For each one I read you, I'd like to know whether you agree, disagree or are in the middle about them. (ROTATE)

Kids are better today than they were in the past.

1. Disagree
2. In the middle
3. Agree
8. NA
9. DK

.....

VAR 0025	V16: PEOPLE DONT RESPECT	MD=8 OR GE 9
REF 0025	LOC 39 WIDTH 1	DK 1 COL 41

People just don't respect other people and their property as much as they used to.

[See REF 24 for complete question text.]

1. Disagree
2. In the middle
3. Agree
8. NA

(CONTINUED)

9. DK

.....

VAR 0026	V17: NGHRS REDUCE CRIME	MD=8 OR GE 9
REF 0026	LOC 40 WIDTH 1	DK 1 COL 42

Groups of neighbors getting together can reduce crime in their area.

[See REF 24 for complete question text.]

1. Disagree
2. In the middle
3. Agree

8. NA
9. DK

.....

VAR 0027	V18: LOT OF CRAZY PEOPLE	MD=8 OR GE 9
REF 0027	LOC 41 WIDTH 1	DK 1 COL 43

There are a lot of crazy people in this city -- and you never know what they are going to do.

[See REF 24 for complete question text.]

1. Disagree
2. In the middle
3. Agree

8. NA
9. DK

.....

VAR 0028	V19: POLICE CANT DO MUCH	MD=8 OR GE 9
REF 0028	LOC 42 WIDTH 1	DK 1 COL 44

The police really can't do much to stop crime.

(CONTINUED)

[See REF 24 for complete question text.]

1. Disagree
2. In the middle
3. Agree

8. NA
9. DK

.....

VAR 0029	V20: EVER GATHERED DISCU	MD=7 OR GE 8
REF 0029	LOC 43 WIDTH 1	DK 1 COL 45

Now I have some questions about activities in your neighborhood.

Have you ever gotten together with friends or neighbors to talk about, or do something about, neighborhood problems?

1. Yes
2. No

7. DK
8. NA

.....

VAR 0030	V21: KNOW COMMUNITY GRPS	MD=7 OR GE 8
REF 0030	LOC 44 WIDTH 1	DK 1 COL 46

Do you know of any community groups or organizations in your neighborhood?

1. Yes
2. No

7. DK
8. NA

VAR 0031 V22: INVOLVD COMM GROUPS MD=7 OR GE 8
 REF 0031 LOC 45 WIDTH 1 DK 1 COL 47

--IF CODED 1 ON REF 30--

Have you ever been involved with any of those community groups or organizations?

1. Yes
2. No
7. DK
8. NA
9. Inap., coded other than 1 on REF 30

.....
 VAR 0032 ORGTYPE1: COMMORG1 MD=0
 REF 0032 LOC 46 WIDTH 2 DK 1 COL 48-49

--IF CODED 1 ON REF 31--

Could you tell me their names? -- First type of organization mentioned

01. Terr comm organization
02. Terr block club
03. Crime organization
04. Service social organization
05. Church group
06. Business group
07. School organization
08. Community center
09. Political organization party
10. Political organization nonparty
11. Youth oriented
19. Other non-neighborhood organization
20. Unclassifiable
00. Inap., coded other than 1 on REF 31; NA

VAR 0033 ORGTYPE2: COMMORG2 MD=0
 REF 0033 LOC 48 WIDTH 2 DK 1 COL 50-51

--IF CODED 1 ON REF 31--

Could you tell me their names? -- Second type of organization mentioned

[See REF 32 for codes.]

00. Inap., coded other than 1 on REF 31; No further mentions; NA

.....
 VAR 0034 ORGTYPE3: COMMORG3 MD=0
 REF 0034 LOC 50 WIDTH 2 DK 1 COL 52-53

--IF CODED 1 ON REF 31--

Could you tell me their names? -- Third type of organization mentioned

[See REF 32 for codes.]

00. Inap., coded other than 1 on REF 31; No further mentions; NA

.....
 VAR 0035 ORGTYPE4: COMMORG4 MD=0
 REF 0035 LOC 52 WIDTH 2 DK 1 COL 54-55

--IF CODED 1 ON REF 31--

Could you tell me their names? -- Fourth type of organization mentioned

[See REF 32 for codes.]

00. Inap., coded other than 1 on REF 31; No further mentions; NA

VAR 0036 V23: # GRPS INVOLVD WITH MD=98 OR GE 99
REF 0036 LOC 54 WIDTH 2 DK 1 COL 56-57

--IF CODED 1 ON REF 31--

Could you tell me their names? (RECORD EXACT NUMBER OF ORGANIZATIONS)

Actual number is coded.

- 98. NA
- 99. Inap., coded other than 1 on REF 31

.....
VAR 0037 V24: 1ST ORG-TRIED ACTIO MD=7 OR GE 8
REF 0037 LOC 56 WIDTH 1 DK 1 COL 58

--IF CODED 1 ON REF 31--

From what you know has _____ ever tried to do anything about CRIME in your neighborhood? [First organization]

- 1. Yes
- 2. No
- 7. DK
- 8. NA
- 9. Inap., coded other than 1 on REF 31

.....
VAR 0038 CRMACT1: COMMORG1 ACT-1 MD=0
REF 0038 LOC 57 WIDTH 2 DK 1 COL 59-60

--IF CODED 1 ON REF 37--

Could you tell me briefly what that was? [First organization] -- First mention

- 01. Provide youth
- 02. Counseling kids

(CONTINUED)

- 03. Deal with delinquents
- 04. Youth social control
- 05. Teach kids law
- 06. Parents work kids
- 07. Gang problems
- 08. Strengthen families
- 09. Rid of families
- 10. Rid of pushers/addicts/drunks
- 11. Rid incivil
- 12. Informal social control
- 13. Radio patrols
- 14. Walk-dog patrols
- 15. Escorts
- 16. Tenant patrols
- 17. Whistlestop
- 18. Neighborhood surveillance/buddy system
- 19. Encourage reporting
- 20. Organize neighborhood
- 21. Look out for each other
- 22. Develop interest com
- 23. Provide advice
- 24. Engrave objects
- 25. Havens for children
- 26. Street lighting program
- 27. Meet with police
- 28. Pressure on police
- 29. Assist police
- 30. End police brutality
- 31. Hire private police
- 32. Promote awareness
- 33. Hold meetings
- 34. Meet press/public officials
- 35. Testify about kids
- 36. Assist victims
- 37. Represent accused
- 38. Rent strike
- 39. Anti-arson efforts
- 40. Traffic control
- 41. Graffiti off walls
- 42. Reduce vandalism
- 43. Dispute resolution
- 44. Improve neighborhood
- 45. Stop muggings of elderly
- 46. Stop TV violence
- 47. Help people
- 48. Vague
- 49. Other not vague
- 50. Adult activities
- 51. Comm corrections

(CONTINUED)

00. Inap., coded other than 1 on REF 37; NA

.....

VAR 0039	CRMACT2: COMMORG1 ACT-2	MD=0
REF 0039	LOC 59 WIDTH 2	DK 1 COL 61-62

--IF CODED 1 ON REF 37--

Could you tell me briefly what that was? [First organization] -- Second mention

[See REF 38 for codes.]

00. Inap., coded other than 1 on REF 37; No further mentions; NA

.....

VAR 0040	V25: 1ST ORG-R TAKE PART	MD=7 OR GE 8
REF 0040	LOC 61 WIDTH 1	DK 1 COL 63

--IF CODED 1 ON REF 37--

Did you take part in these activities? [First organization]

1. Yes
2. No

7. DK
8. NA

9. Inap., coded other than 1 on REF 37

.....

VAR 0041	V26: 1ST ORG-EFFECTIVENE	MD=7 OR GE 8
REF 0041	LOC 62 WIDTH 1	DK 1 COL 64

--IF CODED 1 ON REF 37--

Do you think that the organization's efforts helped, hurt or didn't make any difference? [First organization]

(CONTINUED)

1. Hurt
2. No difference
3. Helped

7. DK
8. NA

9. Inap., coded other than 1 on REF 37

.....

VAR 0042	V27: 2ND ORG-TRIED ACTIO	MD=7 OR GE 8
REF 0042	LOC 63 WIDTH 1	DK 1 COL 65

--IF CODED 1 ON REF 31--

From what you know has _____ ever tried to do anything about CRIME in your neighborhood? [Second organization]

1. Yes
2. No

7. DK
8. NA

9. Inap., coded other than 1 on REF 31

.....

VAR 0043	CRMACT3: COMMORG2 ACT-1	MD=0
REF 0043	LOC 64 WIDTH 2	DK 1 COL 66-67

--IF CODED 1 ON REF 42--

Could you tell me briefly what that was? [Second organization] -- First mention

01. Provide youth
02. Counseling kids
03. Deal with delinquents
04. Youth social control
05. Teach kids law
06. Parents work kids
07. Gang problems
08. Strengthen families

(CONTINUED)

09. Rid of families
10. Rid of pushers/addicts/drunks
11. Rid incivil
12. Informal social control
13. Radio patrols
14. Walk-dog patrols
15. Escorts
16. Tenant patrols
17. Whistlestop
18. Neighborhood surveillance/buddy system
19. Encourage reporting
20. Organize neighborhood
21. Look out for each other
22. Develop interest com
23. Provide advice
24. Engrave objects
25. Havens for children
26. Street lighting program
27. Meet with police
28. Pressure on police
29. Assist police
30. End police brutality
31. Hire private police
32. Promote awareness
33. Hold meetings
34. Meet press/public officials
35. Testify about kids
36. Assist victims
37. Represent accused
38. Rent strike
39. Anti-arson efforts
40. Traffic control
41. Graffiti off walls
42. Reduce vandalism
43. Dispute resolution
44. Improve neighborhood
45. Stop muggings of elderly
46. Stop TV violence
47. Help people
48. Vague
49. Other not vague
50. Adult activities
51. Comm corrections

00. Inap., coded other than 1 on REF 42; NA

VAR 0044 CRMACT4: COMMORG2 ACT-2 MD=0
REF 0044 LOC 66 WIDTH 2 DK 1 COL 68-69

--IF CODED 1 ON REF 42--

Could you tell me briefly what that was? [Second organization] -- Second mention

[See REF 43 for codes.]

00. Inap., coded other than 1 on REF 42; No further mentions; NA

VAR 0045 V28: 2ND ORG-R TAKE PART MD=7 OR GE 8
REF 0045 LOC 68 WIDTH 1 DK 1 COL 70

--IF CODED 1 ON REF 42--

Did you take part in these activities? [Second organization]

1. Yes
2. No
7. DK
8. NA
9. Inap., coded other than 1 on REF 42

VAR 0046 V29: 2ND ORG-EFFECTIVENESS MD=7 OR GE 8
REF 0046 LOC 69 WIDTH 1 DK 1 COL 71

--IF CODED 1 ON REF 42--

Do you think that the organization's efforts helped, hurt or didn't make any difference? [Second organization]

1. Hurt
2. No difference
3. Helped

(CONTINUED)

- 7. DK
- 8. NA
- 9. Inap., coded other than 1 on REF 42

.....
 VAR 0047 V30: 3RD ORG-TRIED ACTIO MD=7 OR GE 8
 REF 0047 LOC 70 WIDTH 1 DK 1 COL 72

--IF CODED 1 ON REF 31--

From what you know has _____ ever tried to do anything about
 CRIME in your neighborhood? [Third organization]

- 1. Yes
- 2. No

- 7. DK
- 8. NA
- 9. Inap., coded other than 1 on REF 31

.....
 VAR 0048 CRMACT5: COMMORG3 ACT-1 MD=0
 REF 0048 LOC 71 WIDTH 2 DK 1 COL 73-74

--IF CODED 1 ON REF 47--

Could you tell me briefly what that was? [Third
 organization] -- First mention

- 01. Provide youth
- 02. Counseling kids
- 03. Deal with delinquents
- 04. Youth social control
- 05. Teach kids law
- 06. Parents work kids
- 07. Gang problems
- 08. Strengthen families
- 09. Rid of families
- 10. Rid of pushers/addicts/drunks
- 11. Rid incivil
- 12. Informal social control

(CONTINUED)

- 13. Radio patrols
- 14. Walk-dog patrols
- 15. Escorts
- 16. Tenant patrols
- 17. Whistlestop
- 18. Neighborhood surveillance/buddy system
- 19. Encourage reporting
- 20. Organize neighborhood
- 21. Look out for each other
- 22. Develop interest com
- 23. Provide advice
- 24. Engrave objects
- 25. Havens for children
- 26. Street lighting program
- 27. Meet with police
- 28. Pressure on police
- 29. Assist police
- 30. End police brutality
- 31. Hire private police
- 32. Promote awareness
- 33. Hold meetings
- 34. Meet press/public officials
- 35. Testify about kids
- 36. Assist victims
- 37. Represent accused
- 38. Rent strike
- 39. Anti-arson efforts
- 40. Traffic control
- 41. Graffiti off walls
- 42. Reduce vandalism
- 43. Dispute resolution
- 44. Improve neighborhood
- 45. Stop muggings of elderly
- 46. Stop TV violence
- 47. Help people
- 48. Vague
- 49. Other not vague
- 50. Adult activities
- 51. Comm corrections

00. Inap., coded other than 1 on REF 47; NA

.....
 VAR 0049 CRMACT6: COMMORG3 ACT-2 MD=0
 REF 0049 LOC 73 WIDTH 2 DK 1 COL 75-76

--IF CODED 1 ON REF 47--

(CONTINUED)

Could you tell me briefly what that was? [Third organization] -- Second mention

[See REF 48 for codes.]

00. Inap., coded other than 1 on REF 47; No further mentions; NA

.....

VAR 0050 V31: 3RD ORG-R TAKE PART MD=7 OR GE 8
REF 0050 LOC 75 WIDTH 1 DK 1 COL 77

--IF CODED 1 ON REF 47--

Did you take part in these activities? [Third organization]

1. Yes
2. No

7. DK
8. NA

9. Inap., coded other than 1 on REF 47

.....

VAR 0051 V32: 3RD ORG-EFFECTIVENESS MD=7 OR GE 8
REF 0051 LOC 76 WIDTH 1 DK 1 COL 78

--IF CODED 1 ON REF 47--

Do you think that the organization's efforts helped, hurt or didn't make any difference? [Third organization]

1. Hurt
2. No difference
3. Helped

7. DK
8. NA

9. Inap., coded other than 1 on REF 47

VAR 0052 V33: SPECIAL CRIME EFFORT MD=7 OR GE 8
REF 0052 LOC 77 WIDTH 1 DK 1 COL 79

Do you know of any (other) special efforts or programs going on in your neighborhood to prevent crime?

1. Yes
2. No

7. DK
8. NA

DECK IDENTIFICATION NUMBER IS '02'

DK 2 COL 1- 2

.....

VAR 0001 ICPSR STUDY NUMBER-8162 NO MISSING DATA CODES
REF 0001 LOC 1 WIDTH 4 DK 2 COL 3- 6

ICPSR Study Number - 8162

8162. The ICPSR has attached this number as a unique data collection identification number.

.....

VAR 0002 ICPSR EDITION NUMBER-1 NO MISSING DATA CODES
REF 0002 LOC 5 WIDTH 1 DK 2 COL 7

ICPSR Edition Number - 1

The number identifying the release edition of the data collection.

1. Spring, 1984 release

VAR 0003 ICPSR PART NUMBER-1 NO MISSING DATA CODES
REF 0003 LOC 6 WIDTH 1 DK 2 COL 8

ICPSR Part Number - 1

1. The entire data collection is contained in one part.

VAR 0004 ICPSR SEQUENCE NUMBER NO MISSING DATA CODES
REF 0004 LOC 7 WIDTH 4 DK 2 COL 9-12

ICPSR Sequential Case Identification Number

The ICPSR has attached a sequential case identification number to every record. This number uniquely identifies each record in the data collection.

VAR 0053 ORGTYPE5: PROGRAM-1 MD=0
REF 0053 LOC 78 WIDTH 2 DK 2 COL 13-14

--IF CODED 1 ON REF 52--

Please describe these efforts or programs and/or their names
-- First program mentioned

- 01. Provide youth
- 02. Counseling kids
- 03. Deal with delinquents
- 04. Youth social control
- 05. Teach kids law
- 06. Parents work kids
- 07. Gang problems
- 08. Strengthen families
- 09. Rid of families
- 10. Rid of pushers/addicts/drunks
- 11. Rid incivil
- 12. Informal social control
- 13. Radio patrols
- 14. Walk-dog patrols
- 15. Escorts

(CONTINUED)

- 16. Tenant patrols
- 17. Whistlestop
- 18. Neighborhood surveillance/buddy system
- 19. Encourage reporting
- 20. Organize neighborhood
- 21. Look out for each other
- 22. Develop interest com
- 23. Provide advice
- 24. Engrave objects
- 25. Havens for children
- 26. Street lighting prog
- 27. Meet with police
- 28. Pressure on police
- 29. Assist police
- 30. End police brutality
- 31. Hire private police
- 32. Promote awareness
- 33. Hold meetings
- 34. Meet press/public officials
- 35. Testify about kids
- 36. Assist victims
- 37. Represent accused
- 38. Rent strike
- 39. Anti-arson efforts
- 40. Traffic control
- 41. Graffiti off walls
- 42. Reduce vandalism
- 43. Dispute resolution
- 44. Improve neighborhood
- 45. Stop muggings of elderly
- 46. Stop TV violence
- 47. Help people
- 48. Miscellaneous
- 49. Beat representative
- 50. Adult activities
- 51. Community organization
- 52. Block club
- 53. Crime organization
- 54. Social
- 55. Church
- 56. Business
- 57. Schools
- 58. Centers
- 59. Political parties
- 60. Political nonparties
- 61. Youth oriented
- 62. Police programs
- 63. Help alcoholics
- 64. Hotline
- 65. Police youth program

(CONTINUED)

- 66. Teach self-defense
- 67. Community newspaper
- 68. Anti-rape program
- 69. Media campaign
- 70. Drug program
- 98. Other

00. Inap., coded other than 1 on REF 52; NA

.....
VAR 0054 ORGTYPE6: PROGRAM-2 MD=0
REF 0054 LOC 80 WIDTH 2 DK 2 COL 15-16

--IF CODED 1 ON REF 52--

Please describe these efforts or programs and/or their names
-- Second program mentioned

[See REF 53 for codes.]

00. Inap., coded other than 1 on REF 52; No further
mentions; NA

.....
VAR 0055 ORGTYPE7: PROGRAM-3 MD=0
REF 0055 LOC 82 WIDTH 2 DK 2 COL 17-18

--IF CODED 1 ON REF 52--

Please describe these efforts or programs and/or their names
-- Third program mentioned

[See REF 53 for codes.]

00. Inap., coded other than 1 on REF 52; No further
mentions; NA

VAR 0056 V35: POLICE CONTACT IN P MD=7 OR GE 8
REF 0056 LOC 84 WIDTH 1 DK 2 COL 19

In the past year, have you contacted the police to make a
complaint about something or to request some kind of help?

- 1. Yes
- 2. No
- 7. DK
- 8. NA

.....
VAR 0057 V36: POL CON-REP CR SELF MD=8 OR GE 9
REF 0057 LOC 85 WIDTH 1 DK 2 COL 20

--IF CODED 1 ON REF 56--

What was your last call to the police about?

Report crime against self

- 1. Yes
- 8. Not mentioned
- 9. Inap., coded other than 1 on REF 56

.....
VAR 0058 V37: POL CON-REP CR OTHR MD=8 OR GE 9
REF 0058 LOC 86 WIDTH 1 DK 2 COL 21

--IF CODED 1 ON REF 56--

What was your last call to the police about?

Report crime against somebody else

- 1. Yes
- 8. Not mentioned

(CONTINUED)

9. Inap., coded other than 1 on REF 56

.....

VAR 0059	V38: POL CON-REPORT GENE	MD=8 OR GE	9
REF 0059	LOC 87 WIDTH 1	DK 2 COL 22	

--IF CODED 1 ON REF 56--

What was your last call to the police about?

Report general crime in neighborhood

1. Yes

8. Not mentioned

9. Inap., coded other than 1 on REF 56

.....

VAR 0060	V39: POL CON-LACK PROTEC	MD=8 OR GE	9
REF 0060	LOC 88 WIDTH 1	DK 2 COL 23	

--IF CODED 1 ON REF 56--

What was your last call to the police about?

Lack of police protection/request increase

1. Yes

8. Not mentioned

9. Inap., coded other than 1 on REF 56

.....

VAR 0061	V40: POL CON-COMPLAINTS-	MD=8 OR GE	9
REF 0061	LOC 89 WIDTH 1	DK 2 COL 24	

--IF CODED 1 ON REF 56--

What was your last call to the police about?

(CONTINUED)

Complaints about specific officer or incidents

1. Yes

8. Not mentioned

9. Inap., coded other than 1 on REF 56

.....

VAR 0062	V41: POL CON-REQUEST GEN	MD=8 OR GE	9
REF 0062	LOC 90 WIDTH 1	DK 2 COL 25	

--IF CODED 1 ON REF 56--

What was your last call to the police about?

General request of information from police

1. Yes

8. Not mentioned

9. Inap., coded other than 1 on REF 56

.....

VAR 0063	V42: POL CON-PUBLIC SERV	MD=8 OR GE	9
REF 0063	LOC 91 WIDTH 1	DK 2 COL 26	

--IF CODED 1 ON REF 56--

What was your last call to the police about?

Public services problem (sewer, streets, street lights, fire)

1. Yes

8. Not mentioned

9. Inap., coded other than 1 on REF 56

VAR 0064 V43: POL CON-REQUEST AMB MD=8 OR GE 9
REF 0064 LOC 92 WIDTH 1 DK 2 COL 27

--IF CODED 1 ON REF 56--

What was your last call to the police about?

Request ambulance

1. Yes
 8. Not mentioned
 9. Inap., coded other than 1 on REF 56
-

VAR 0065 V44: POL CON-OTHER MD=8 OR GE 9
REF 0065 LOC 93 WIDTH 1 DK 2 COL 28

--IF CODED 1 ON REF 56--

What was your last call to the police about?

Other (SPECIFY)

1. Yes
 8. Not mentioned
 9. Inap., coded other than 1 on REF 56
-

VAR 0066 V45: POL CON-DK NA INAP MD=7 OR GE 8
REF 0066 LOC 94 WIDTH 1 DK 2 COL 29

--IF CODED 1 ON REF 56--

What was your last call to the police about?

Don't know/Not ascertained/Inappropriate

7. DK

(CONTINUED)

8. NA
 9. Inap., coded other than 1 on REF 56
-

VAR 0067 V46: PUBLIC OFFCL CONTACT MD=7 OR GE 8
REF 0067 LOC 95 WIDTH 1 DK 2 COL 30

Have you contacted any public official, other than police,
in the past year to make a complaint about something or to
request some kind of help?

1. Yes
 2. No
 7. DK
 8. NA
-

VAR 0068 V47: PUB OFF-REP CR SELF MD=8 OR GE 9
REF 0068 LOC 96 WIDTH 1 DK 2 COL 31

--IF CODED 1 ON REF 67--

What was your last call to a public official about?

Report crime against self

1. Yes
 8. Not mentioned
 9. Inap., coded other than 1 on REF 67
-

VAR 0069 V48: PUB OFF-REP CR OTHR MD=8 OR GE 9
REF 0069 LOC 97 WIDTH 1 DK 2 COL 32

--IF CODED 1 ON REF 67--

What was your last call to a public official about?

(CONTINUED)

Report crime against somebody else

- 1. Yes
- 8. Not mentioned
- 9. Inap., coded other than 1 on REF 67

VAR 0070 V49: PUB OFF-REPORT GENE MD=8 OR GE 9
REF 0070 LOC 98 WIDTH 1 DK 2 COL 33

--IF CODED 1 ON REF 67--

What was your last call to a public official about?
Report general crime in neighborhood

- 1. Yes
- 8. Not mentioned
- 9. Inap., coded other than 1 on REF 67

VAR 0071 V50: PUB OFF-LACK PROTEC MD=8 OR GE 9
REF 0071 LOC 99 WIDTH 1 DK 2 COL 34

--IF CODED 1 ON REF 67--

What was your last call to a public official about?
Lack of police protection/request increase

- 1. Yes
- 8. Not mentioned
- 9. Inap., coded other than 1 on REF 67

VAR 0072 V51: PUB OFF-COMPLAINTS- MD=8 OR GE 9
REF 0072 LOC 100 WIDTH 1 DK 2 COL 35

--IF CODED 1 ON REF 67--

What was your last call to a public official about?
Complaints about specific officer or incidents

- 1. Yes
- 8. Not mentioned
- 9. Inap., coded other than 1 on REF 67

VAR 0073 V52: PUB OFF-REQUEST GEN MD=8 OR GE 9
REF 0073 LOC 101 WIDTH 1 DK 2 COL 36

--IF CODED 1 ON REF 67--

What was your last call to a public official about?
General request of information from a public official

- 1. Yes
- 8. Not mentioned
- 9. Inap., coded other than 1 on REF 67

VAR 0074 V53: PUB OFF-PUBLIC SERV MD=8 OR GE 9
REF 0074 LOC 102 WIDTH 1 DK 2 COL 37

--IF CODED 1 ON REF 67--

What was your last call to a public official about?
Public services problem (sewer, streets, street lights, fire)

(CONTINUED)

- 1. Yes
- 8. Not mentioned
- 9. Inap., coded other than 1 on REF 67

.....
VAR 0075 V54: PUB OFF-REQUEST AMB MD=8 OR GE 9
REF 0075 LOC 103 WIDTH 1 DK 2 COL 38

--IF CODED 1 ON REF 67--

What was your last call to a public official about?

Request ambulance

- 1. Yes
- 8. Not mentioned
- 9. Inap., coded other than 1 on REF 67

.....
VAR 0076 V55: PUB OFF-OTHER MD=8 OR GE 9
REF 0076 LOC 104 WIDTH 1 DK 2 COL 39

--IF CODED 1 ON REF 67--

What was your last call to a public official about?

Other (SPECIFY)

- 1. Yes
- 8. Not mentioned
- 9. Inap., coded other than 1 on REF 67

VAR 0077 V56: PUB OFF-DK NA INAP MD=7 OR GE 8
REF 0077 LOC 105 WIDTH 1 DK 2 COL 40

--IF CODED 1 ON REF 67--

What was your last call to a public official about?

Don't know/Not ascertained/Inappropriate

- 7. DK
- 8. NA
- 9. Inap., coded other than 1 on REF 67

.....
VAR 0078 V57: NBRHD PROB-TEENAGER MD=8 OR GE 9
REF 0078 LOC 106 WIDTH 1 DK 2 COL 41

Now, I am going to read you a list of crime-related problems that exist in some parts of the city. For each one, I'd like you to tell me how much of a problem it is in your neighborhood. Is it a big problem, some problem or almost no problem in your neighborhood? (ROTATE)

For example, groups of teenagers hanging out on the streets. Is this a big problem, some problem or almost no problem in your neighborhood?

- 1. Almost no problem
- 2. Some problem
- 3. Big problem

- 8. NA
- 9. DK

.....
VAR 0079 V58: NBRHD PROB-ABANDONE MD=8 OR GE 9
REF 0079 LOC 107 WIDTH 1 DK 2 COL 42

Buildings of storefronts sitting abandoned or burned out. Is this a big problem, some problem, or almost no problem in your neighborhood?

(CONTINUED)

1. Almost no problem
2. Some problem
3. Big problem

8. NA
9. DK

.....

VAR 0080	V59: NBRHD PROB-DRUGS	MD=8 OR GE 9
REF 0080	LOC 108 WIDTH 1	DK 2 COL 43

People using illegal drugs in the neighborhood. Is this a big problem, some problem, or almost no problem?

1. Almost no problem
2. Some problem
3. Big problem

8. NA
9. DK

.....

VAR 0081	V60: NBRHD PROB-VANDALIS	MD=8 OR GE 9
REF 0081	LOC 109 WIDTH 1	DK 2 COL 44

Vandalism like kids breaking windows or writing on walls or things like that. How much of a problem is this?

1. Almost no problem
2. Some problem
3. Big problem

8. NA
9. DK

VAR 0082	V61: TIME WHEN CRIME LES	MD=7 OR GE 8
REF 0082	LOC 110 WIDTH 1	DK 2 COL 45

Was there ever a time in this country when crime seemed to be MUCH LESS of a problem than it is now?

1. Yes
2. No

7. DK
8. NA

.....

VAR 0083	V62: WHEN CRIME LESS OF	MD=97 OR GE 98
REF 0083	LOC 111 WIDTH 2	DK 2 COL 46-47

--IF CODED 1 ON REF 82--

When was that? About how many years ago? (PROBE: JUST A GUESS WILL DO. GET BEST ESTIMATE OF A SINGLE DATE OR YEARS AGO. IF GIVEN RANGE, RECORD BASED ON MIDDLE YEAR, E.G., 1920-1925=1922; 50's=1955.)

Actual number is coded.

96. 96 or more

97. DK
98. NA

99. Inap., coded other than 1 on REF 82

.....

VAR 0084	V63: NBRHD PROB-BURGLARY	MD=7 OR GE 8
REF 0084	LOC 113 WIDTH 1	DK 2 COL 48

What about burglary for the neighborhood in general. Is breaking into people's homes or sneaking in to steal something a big problem, some problem or almost no problem for people in your neighborhood?

(CONTINUED)

1. Almost no problem
2. Some problem
3. Big problem

7. DK
8. NA

.....

VAR 0085 V64: KNOW BURGLARY VICT MD=7 OR GE 8
REF 0085 LOC 114 WIDTH 1 DK 2 COL 49

Do you personally know of anyone, other than yourself, whose home or apartment has been broken into in the past couple of years or so?

1. Yes
2. No

7. DK
8. NA

.....

VAR 0086 V65: BURG HAPPN IN NBRHD MD=7 OR GE 8
REF 0086 LOC 115 WIDTH 1 DK 2 COL 50

--IF CODED 1 ON REF 85--

Did any of these break-ins happen in your present neighborhood?

1. Yes
2. No

7. DK
8. NA
9. Inap., coded other than 1 on REF 85

VAR 0087 V66: # OF BURGLARIES LST MD=998 OR GE 999
REF 0087 LOC 116 WIDTH 3 DK 2 COL 51-53

About how many times do you think this might have happened in your immediate neighborhood in the last year? (GET BEST ESTIMATE)

Actual number is coded.

997. 997 or over

998. NA
999. DK

.....

VAR 0088 V67: LIKELY-ATTEMPT ROB MD=97 OR GE 98
REF 0088 LOC 119 WIDTH 2 DK 2 COL 54-55

(READ SLOWLY) Now we're going to do something a little bit different. For this next question, I'd like you to think of a row of numbers from zero to ten Now, let the ZERO stand for NO POSSIBILITY AT ALL of something happening, and the TEN will stand for it being EXTREMELY LIKELY that something could happen.

On this row of numbers from ZERO to TEN, how likely do you think it is that someone will try to get into your own (house/apartment) to steal something. (REREAD INSTRUCTION IF NECESSARY -- GET BEST ESTIMATE)

00. No possibility

10. Extremely likely

97. DK
98. NA

VAR 0089 V68: ANY ACTUAL BREAKINS MD=7 OR GE 8
 REF 0089 LOC 121 WIDTH 1 DK 2 COL 56

Has anyone actually broken into your home in the past two years? (NOTE THIS APPLIES TO ALL RESIDENCES IN LAST TWO YEARS)

-
1. Yes
 2. No
 7. DK
 8. NA
-

VAR 0090 V69: IMP THINGS FOR PROT MD=97 OR GE 98
 REF 0090 LOC 122 WIDTH 2 DK 2 COL 57-58

Which of the following three things would you say is the most important for keeping your house safe from burglars: being lucky, being careful, or living in a good neighborhood?

-
01. Being lucky
 02. Being careful
 03. Living in good neighborhood
 04. Being lucky/being careful
 05. Being lucky/living in good neighborhood
 06. Being careful/living in good neighborhood
 07. All three
 08. Other (SPECIFY)
 97. DK
 98. NA
-

VAR 0091 V70: PROT-ENGRAVED VALUA MD=7 OR GE 8
 REF 0091 LOC 124 WIDTH 1 DK 2 COL 59

I'm going to mention a few things that some people do to protect their homes from burglary. As I read each one would you please tell me whether or not your family does that?

(CONTINUED)

Have you engraved your valuables with your name or some sort of identification, in case they are stolen?

-
1. Yes
 2. No
 7. DK
 8. NA
-

VAR 0092 V71: PROT-BARS OR SPECIA MD=7 OR GE 8
 REF 0092 LOC 125 WIDTH 1 DK 2 COL 60

Do you have any bars or SPECIAL locks on your windows?

-
1. Yes
 2. No
 7. DK
 8. NA
-

VAR 0093 V72: PROT-PEEPHOLE IN DR MD=7 OR GE 8
 REF 0093 LOC 126 WIDTH 1 DK 2 COL 61

Do you have a peep-hole or little window in your door to identify people before letting them in?

-
1. Yes
 2. No
 7. DK
 8. NA

VAR 0094 V73: PROT-LEAVE LIGHT ON MD=7 OR GE 8
REF 0094 LOC 127 WIDTH 1 DK 2 COL 62

Now, think of the last time you just went out at night. Did you leave a light on while you were gone?

- 1. Yes
- 2. No
- 7. DK
- 8. NA

VAR 0095 V74: AWAY-NOTIFY POLICE MD=7 OR GE 8
REF 0095 LOC 128 WIDTH 1 DK 2 COL 63

Now, think of the last time you went away from home for more than a day or so.

Did you notify the police so they could keep a special watch?

- 1. Yes
- 2. No
- 7. DK
- 8. NA

VAR 0096 V75: AWAY-STOP DELIVERIE MD=7 OR GE 8
REF 0096 LOC 129 WIDTH 1 DK 2 COL 64

Did you stop delivery of things like newspapers and mail, or have someone bring them in?

[See REF 95 for complete question text.]

- 1. Yes
- 2. No

(CONTINUED)

- 7. DK
- 8. NA

VAR 0097 V76: AWAY-NEIGHBOR WATCH MD=7 OR GE 8
REF 0097 LOC 130 WIDTH 1 DK 2 COL 65

Did you have a neighbor watch your house/apartment?

[See REF 95 for complete question text.]

- 1. Yes
- 2. No
- 7. DK
- 8. NA

VAR 0098 V77: NBRHD PROB-ROBBERY MD=7 OR GE 8
REF 0098 LOC 131 WIDTH 1 DK 2 COL 66

How about PEOPLE being robbed or having their purses or wallets taken on the street. Would you say that this is a big problem, some problem or almost no problem in your neighborhood?

- 1. Almost no problem
- 2. Some problem
- 3. Big problem
- 7. DK
- 8. NA

VAR 0099 V78: LIKELY-R ROBBED ON MD=97 OR GE 98
REF 0099 LOC 132 WIDTH 2 DK 2 COL 67-68

How about YOURSELF? On the row of numbers from zero to ten that we talked about before, how likely is it in the next

(CONTINUED)

couple of years that someone will try to rob YOU or take your purse/wallet on the street in your neighborhood? Remember TEN means EXTREMELY LIKELY and ZERO means NO POSSIBILITY at all.

00. No possibility

10. Extremely likely

97. DK

98. NA

VAR 0100 V79: KNOW ROBBERY VICTIM MD=7 OR GE 8
REF 0100 LOC 134 WIDTH 1 DK 2 COL 69

Do you personally know of anyone, other than yourself, who has been robbed or had their purse or wallet taken, in the past couple of years, or if someone tried to do this to them?

1. Yes
2. No

7. DK
8. NA

VAR 0101 V80: 1ST ROBBERY-LOCATIO MD=7 OR GE 8
REF 0101 LOC 135 WIDTH 1 DK 2 COL 70

--IF CODED 1 ON REF 100--

Where did these robberies happen? Were they in your present neighborhood, someplace else in the city, or out of town? -- First mention

1. Present neighborhood
2. City
3. Out-of-town

(CONTINUED)

7. DK
8. NA
9. Inap., coded other than 1 on REF 100

VAR 0102 V81: 2ND ROBBERY-LOCATIO MD=7 OR GE 8
REF 0102 LOC 136 WIDTH 1 DK 2 COL 71

--IF CODED 1 ON REF 100--

Where did these robberies happen? Were they in your present neighborhood, someplace else in the city, or out of town? -- Second mention

1. Present neighborhood
2. City
3. Out-of-town

7. DK
8. NA; No further mentions
9. Inap., coded other than 1 on REF 100

VAR 0103 V82: 3RD ROBBERY-LOCATIO MD=7 OR GE 8
REF 0103 LOC 137 WIDTH 1 DK 2 COL 72

--IF CODED 1 ON REF 100--

Where did these robberies happen? Were they in your present neighborhood, someplace else in the city, or out of town? -- Third mention

1. Present neighborhood
2. City
3. Out-of-town

7. DK
8. NA; No further mentions
9. Inap., coded other than 1 on REF 100

VAR 0104 V83: NBRHD PROB-ASSAULT MD=7 OR GE 8
REF 0104 LOC 138 WIDTH 1 DK 2 COL 73

Besides robbery, how about people being attacked or beaten up in your neighborhood by strangers. Is this a big problem, some problem or almost no problem?

- 1. Almost no problem
- 2. Some problem
- 3. Big problem

- 7. DK
- 8. NA

VAR 0105 V84: LIKELY-R ASSAULT BY MD=97 OR GE 98
REF 0105 LOC 139 WIDTH 2 DK 2 COL 74-75

How about YOURSELF? On the row of numbers from zero to ten, how likely is it that some stranger would try to attack and beat you up in your present neighborhood in the next couple of years? Remember, TEN means EXTREMELY LIKELY and ZERO means NO POSSIBILITY at all.

00. No possibility

10. Extremely likely

- 97. DK
- 98. NA

VAR 0106 V85: KNOW ASSAULT VICTIM MD=7 OR GE 8
REF 0106 LOC 141 WIDTH 1 DK 2 COL 76

Do you personally know anyone who has been a victim of an attack by strangers in the past couple of years, or if any stranger tried to attack anyone you know?

(CONTINUED)

- 1. Yes
- 2. No

- 7. DK
- 8. NA

VAR 0107 V86: 1ST ASSAULT-LOCATIO MD=7 OR GE 8
REF 0107 LOC 142 WIDTH 1 DK 2 COL 77

--IF CODED 1 ON REF 106--

Where did these attacks happen? Were they in your present neighborhood, someplace else in the city, or out of town? -- First mention

- 1. Present neighborhood
- 2. City
- 3. Out-of-town

- 7. DK
- 8. NA
- 9. Inap., coded other than 1 on REF 106

VAR 0108 V87: 2ND ASSAULT-LOCATIO MD=7 OR GE 8
REF 0108 LOC 143 WIDTH 1 DK 2 COL 78

--IF CODED 1 ON REF 106--

Where did these attacks happen? Were they in your present neighborhood, someplace else in the city, or out of town? -- Second mention

- 1. Present neighborhood
- 2. City
- 3. Out-of-town

- 7. DK
- 8. NA; No further mentions
- 9. Inap., coded other than 1 on REF 106

VAR 0109 V88: 3RD ASSAULT-LOCATIO MD=7 OR GE 8
REF 0109 LOC 144 WIDTH 1 DK 2 COL 79

--IF CODED 1 ON REF 106--

Where did these attacks happen? Were they in your present neighborhood, someplace else in the city, or out of town? --Third mention

- 1. Present neighborhood
- 2. City
- 3. Out-of-town
- 7. DK
- 8. NA; No further mentions
- 9. Inap., coded other than 1 on REF 106

VAR 0110 V89: KIND OF PEOPLE ATTA MD=7 OR GE 8
REF 0110 LOC 145 WIDTH 1 DK 2 COL 80

What kinds of people do you hear about being attacked, beaten up, or robbed in your neighborhood? Are the victims mostly older people, younger people, or children?

- 1. Older people
- 2. Younger people
- 3. Children
- 4. Any combination of older people, younger people, children
- 5. Do not hear specifics
- 6. No crime here
- 7. DK
- 8. NA

DECK IDENTIFICATION NUMBER IS '03' DK 3 COL 1- 2

VAR 0001 ICPSR STUDY NUMBER-8162 NO MISSING DATA CODES
REF 0001 LOC 1 WIDTH 4 DK 3 COL 3- 6

ICPSR Study Number - 8162

8162. The ICPSR has attached this number as a unique data collection identification number.

VAR 0002 ICPSR EDITION NUMBER-1 NO MISSING DATA CODES
REF 0002 LOC 5 WIDTH 1 DK 3 COL 7

ICPSR Edition Number - 1

The number identifying the release edition of the data collection.

- 1. Spring, 1984 release

VAR 0003 ICPSR PART NUMBER-1 NO MISSING DATA CODES
REF 0003 LOC 6 WIDTH 1 DK 3 COL 8

ICPSR Part Number - 1

- 1. The entire data collection is contained in one part.

VAR 0004 ICPSR SEQUENCE NUMBER NO MISSING DATA CODES
REF 0004 LOC 7 WIDTH 4 DK 3 COL 9-12

ICPSR Sequential Case Identification Number

The ICPSR has attached a sequential case identification number to every record. This number uniquely identifies each record in the data collection.

VAR 0111 V90: SEX OF VICTIMS IN N MD=7 OR GE 8
 REF 0111 LOC 146 WIDTH 1 DK 3 COL 13

--IF CODED 1-5 ON REF 110--

Are the victims generally male or female?

1. Males
2. Females
3. Both
4. Do not hear specifics
5. No crime here
7. DK
8. NA
9. Inap., coded other than 1-5 on REF 110

.....
 VAR 0112 V91: # TIMES-OUT AFTR DK MD=97 OR GE 98
 REF 0112 LOC 147 WIDTH 2 DK 3 COL 14-15

During the past week, about how many times did you leave
 your home and go outside after dark? (GET BEST ESTIMATE)
 (PROBE: JUST A GUESS WILL DO)

Actual number is coded.

97. DK
98. NA

.....
 VAR 0113 V92: # TIMES-EV ENTRTMNT MD=97 OR GE 98
 REF 0113 LOC 149 WIDTH 2 DK 3 COL 16-17

In the past two weeks, about how many times have you gone
 somewhere in your neighborhood for evening entertainment --
 to go to a show or somewhere like that? (GET BEST ESTIMATE)
 (PROBE: JUST A GUESS WILL DO)

Actual number is coded.

(CONTINUED)

97. DK
98. NA

.....
 VAR 0114 V93: GO OUT WITH SOMEONE MD=7 OR GE 8
 REF 0114 LOC 151 WIDTH 1 DK 3 COL 18

Now I have a list of things that some people do to protect
 themselves from being attacked or robbed on the street. As
 I read each one would you tell me whether you personally do
 it MOST OF THE TIME, SOMETIMES, or ALMOST NEVER?

When you go out after dark, how often do you get someone to
 go with you because of crime?

1. Almost never
2. Sometimes
3. Most of the time
7. NA; DK
8. Inap., don't go out

.....
 VAR 0115 V94: DRIVE NOT WALK AT N MD=7 OR GE 8
 REF 0115 LOC 152 WIDTH 1 DK 3 COL 19

How often do you go out by car rather than walk at night
 because of crime?

1. Almost never
2. Sometimes
3. Most of the time
7. NA; DK
8. Inap., don't go out

VAR 0116 V95: TAKE PROTCTN AT NGT MD=7 OR GE 8
REF 0116 LOC 153 WIDTH 1 DK 3 COL 20

How about taking something with you at night that could be used for protection from crime -- like a dog, whistle, knife or a gun. How often do you do something like this?

- 1. Almost never
- 2. Sometimes
- 3. Most of the time
- 7. NA; DK
- 8. Inap., don't go out

VAR 0117 V96: AVOID CERTAIN AREAS MD=7 OR GE 8
REF 0117 LOC 154 WIDTH 1 DK 3 COL 21

How often do you avoid certain places in your neighborhood at night?

- 1. Almost never
- 2. Sometimes
- 3. Most of the time
- 7. NA; DK
- 8. Inap., don't go out

VAR 0118 V97: DISTNC-AVOIDED AREA MD=97 OR GE 98
REF 0118 LOC 155 WIDTH 2 DK 3 COL 22-23

--IF CODED 2 OR 3 ON REF 117--

How close to your home is the place you try to avoid? (GET BEST ESTIMATE IN BLOCKS. IF MENTION MORE THAN ONE, RECORD CLOSEST)

Actual number is coded.

(CONTINUED)

- 00. No safe places
- 96. No dangerous places

- 97. DK
- 98. NA
- 99. Inap., coded other than 2 or 3 on REF 117

VAR 0119 V98: FEEL SAFE ALONE-NGT MD=7 OR GE 8
REF 0119 LOC 157 WIDTH 1 DK 3 COL 24

How safe do you feel, or would you feel, being out alone in your neighborhood AT NIGHT -- very safe, somewhat safe, somewhat unsafe or very unsafe?

- 1. Very safe
- 2. Somewhat safe
- 3. Somewhat unsafe
- 4. Very unsafe

- 7. DK
- 8. NA

VAR 0120 V99: FEEL SAFE ALONE-DAY MD=7 OR GE 8
REF 0120 LOC 158 WIDTH 1 DK 3 COL 25

How about DURING THE DAY. How safe do you feel, or would you feel, being out alone in your neighborhood during the day -- very safe, somewhat safe, somewhat unsafe, or very unsafe?

- 1. Very safe
- 2. Somewhat safe
- 3. Somewhat unsafe
- 4. Very unsafe

- 7. DK
- 8. NA

VAR 0121 V100: HOURS WATCH TV MD=10
 REF 0121 LOC 159 WIDTH 2 DK 3 COL 26-27

Now, I'd like to ask you some questions about things you watch on television or read in the newspapers.

First, how many hours did you watch TV last night, between say 6 and 11 p.m.? (GET BEST ESTIMATE)

Actual number is coded.

00. None

10. DK; NA

VAR 0122 V101: WATCH NATIONAL NEW MD=7 OR GE 8
 REF 0122 LOC 161 WIDTH 1 DK 3 COL 28

--IF CODED OTHER THAN 0 OR 10 ON REF 121--

Yesterday, did you watch any NATIONAL news shows, like Walter Cronkite, John Chancellor, Barbara Walters, or the others?

1. Yes
 2. No

7. DK
 8. NA

9. Inap., coded 0 or 10 on REF 121

VAR 0123 V102: WATCH LOCAL NEWS S MD=7 OR GE 8
 REF 0123 LOC 162 WIDTH 1 DK 3 COL 29

--IF CODED OTHER THAN 0 OR 10 ON REF 121--

Did you watch any LOCAL news shows yesterday?

(CONTINUED)

1. Yes
 2. No

7. DK
 8. NA

9. Inap., coded 0 or 10 on REF 121

VAR 0124 V103: WATCH POLICE OR CR MD=7 OR GE 8
 REF 0124 LOC 163 WIDTH 1 DK 3 COL 30

--IF CODED OTHER THAN 0 OR 10 ON REF 121--

Did you watch any shows involving police or crime? (Like Kojak, Charlie's Angels, Hawaii 5-O, Adam 12, Baretta)?

1. Yes
 2. No

7. DK
 8. NA

9. Inap., coded 0 or 10 on REF 121

VAR 0125 V104: READ DAILY NEWSPAP MD=7 OR GE 8
 REF 0125 LOC 164 WIDTH 1 DK 3 COL 31

In the last week, have you read any daily newspapers?

1. Yes
 2. No
 3. Can't read

7. DK
 8. NA

VAR 0126 V105: FIRST DAILY READ
REF 0126 LOC 165 WIDTH 2

MD=97 OR GE 98
DK 3 COL 32-33

--IF CODED 1 ON REF 125--

Which one(s)? -- First mention

Chicago

- 10. Tribune
- 11. Sun Times
- 12. Daily News
- 13. Defender
- 14. Other (SPECIFY)

Philadelphia

- 20. Evening Bulletin
- 22. Inquirer
- 23. Daily News
- 24. Tribune
- 25. Other (SPECIFY)

San Francisco

- 30. Examiner
- 31. Chronicle
- 32. Bay Guardian
- 33. Other (SPECIFY)

- 97. DK
- 98. NA
- 99. Inap., coded other than 1 on REF 125

.....
VAR 0127 V106: SECOND DAILY READ
REF 0127 LOC 167 WIDTH 2

MD=97 OR GE 98
DK 3 COL 34-35

--IF CODED 1 ON REF 125--

Which one(s)? -- Second mention

(CONTINUED)

[See REF 126 for codes.]

- 97. DK
- 98. NA; No further mentions
- 99. Inap., coded other than 1 on REF 125

.....
VAR 0128 V107: THIRD DAILY READ
REF 0128 LOC 169 WIDTH 2

MD=97 OR GE 98
DK 3 COL 36-37

--IF CODED 1 ON REF 125--

Which one(s)? -- Third mention

[See REF 126 for codes.]

- 97. DK
- 98. NA; No further mentions
- 99. Inap., coded other than 1 on REF 125

.....
VAR 0129 V108: FOURTH DAILY READ
REF 0129 LOC 171 WIDTH 2

MD=97 OR GE 98
DK 3 COL 38-39

--IF CODED 1 ON REF 125--

Which one(s)? -- Fourth mention

[See REF 126 for codes.]

- 97. DK
- 98. NA; No further mentions
- 99. Inap., coded other than 1 on REF 125

.....
VAR 0130 V109: FIFTH DAILY READ
REF 0130 LOC 173 WIDTH 2

MD=97 OR GE 98
DK 3 COL 40-41

--IF CODED 1 ON REF 125--

(CONTINUED)

Which one(s)? -- Fifth mention

[See REF 126 for codes.]

- 97. DK
- 98. NA; No further mentions
- 99. Inap., coded other than 1 on REF 125

.....

VAR 0131	V110: SIXTH DAILY READ	MD=97 OR GE 98
REF 0131	LOC 175 WIDTH 2	DK 3 COL 42-43

--IF CODED 1 ON REF 125--

Which one(s)? -- Sixth mention

[See REF 126 for codes.]

- 97. DK
- 98. NA; No further mentions
- 99. Inap., coded other than 1 on REF 125

.....

VAR 0132	V111: READ LOCAL NEWSPAP	MD=7 OR GE 8
REF 0132	LOC 177 WIDTH 1	DK 3 COL 44

Do you read a LOCAL or COMMUNITY newspaper regularly?

- 1. Yes
- 2. No
- 7. DK
- 8. NA
- 9. Inap., can't read

VAR 0133	V112: READ CRIME STORIES	MD=7 OR GE 8
REF 0133	LOC 178 WIDTH 1	DK 3 COL 45

Yesterday, did you read any stories about crime in ANY paper?

- 1. Yes
- 2. No
- 3. Didn't read paper yesterday
- 7. DK; Can't remember
- 8. NA
- 9. Inap., can't read

.....

VAR 0134	V113: REMEMBER CRM STORY	MD=7 OR GE 8
REF 0134	LOC 179 WIDTH 1	DK 3 COL 46

Thinking of all the crime stories you've read, seen or heard about in the last couple of weeks, is there a particular one that you remember, or that sticks out in your mind?

- 1. Yes
- 2. No
- 7. DK
- 8. NA

.....

VAR 0135	STORY1: 1ST MENTIONED RE	MD=0 OR GE 99
REF 0135	LOC 180 WIDTH 2	DK 3 COL 47-48

--IF CODED 1 ON REF 134--

What crime was that? -- First mention

- 01. Drugs
- 02. Home breaking and entering
- 03. Robbery/holdup
- 04. Attack/beatup

(CONTINUED)

05. Delinquency gangs
06. Theft
07. Murder
08. Rape/sexual assault
09. Arson
10. Vandalism
11. Child abuse/neglect
12. Child sexual abuse
13. Kidnapping
14. Hijacking
15. Political corruption
16. Shot/stab not dead
17. Police brutality/corruption
18. Victimless crime
19. Embezzlement
20. Prison escape
21. Policeman killed
98. Other

00. Inap., coded other than 1 on REF 134; NA
99. NA

.....
VAR 0136 STORY2: 2ND MENTIONED RE MD=0 OR GE 99
REF 0136 LOC 182 WIDTH 2 DK 3 COL 49-50

--IF CODED 1 ON REF 134--

What crime was that? -- Second mention

[See REF 135 for codes.]

00. Inap., coded other than 1 on REF 134; No further mentions; NA
99. NA

.....
VAR 0137 V114: BEST SOURCE OF NGR MD=8 OR GE 9
REF 0137 LOC 184 WIDTH 1 DK 3 COL 51

Considering all the sources you use to get information,
what's your BEST source of information about crime IN YOUR
NEIGHBORHOOD?

(CONTINUED)

0. Other (SPECIFY)
1. Local community paper
2. City paper
3. Radio
4. TV
5. Relative
6. Neighbor
7. Friend
8. NA
9. DK

.....
VAR 0138 V115: TALKED ABOUT CRIME MD=7 OR GE 8
REF 0138 LOC 185 WIDTH 1 DK 3 COL 52

In the past week or two have you talked with anyone about
crime?

1. Yes
2. No
7. DK
8. NA

.....
VAR 0139 V116: PERSON TALKED TO MD=7 OR GE 8
REF 0139 LOC 186 WIDTH 1 DK 3 COL 53

--IF CODED 1 ON REF 138--

Who have you talked to? We don't want names, only the
person's relationship to you. (CODE FIRST MENTION ONLY)

1. Wife/husband/spouse
2. Another family member or relative
3. Someone at work/school
4. A neighbor
5. A friend
6. Anyone else/other

(CONTINUED)

- 7. DK
- 8. NA
- 9. Inap., coded other than 1 on REF 138

.....

VAR 0140	V117: TALKED ABOUT RAPE-	MD=7 OR GE 8
REF 0140	LOC 187 WIDTH 1	DK 3 COL 54

What about rape and other forms of sexual assault? In the past month or so how frequently has this subject come up in conversation -- would you say never, occasionally, or very often?

- 1. Never
- 2. Occasionally
- 3. Very often

- 7. DK
- 8. NA

.....

VAR 0141	V118: NBRHD PROB-RAPE	MD=7 OR GE 8
REF 0141	LOC 188 WIDTH 1	DK 3 COL 55

Now I have a few specific questions about the problem of rape or sexual assault.

In your neighborhood, would you say sexual assaults are a big problem, somewhat of a problem, or almost no problem at all?

- 1. Almost no problem
- 2. Somewhat of a problem
- 3. Big problem

- 7. DK
- 8. NA

VAR 0142	V119: # RAPES IN NBRHD	MD=7 OR GE 8
REF 0142	LOC 189 WIDTH 1	DK 3 COL 56

Do you think that the number of rapes in your neighborhood is going up, going down or staying about the same?

- 1. Down
- 2. Same
- 3. Up
- 4. No rape here

- 7. DK
- 8. NA

.....

VAR 0143	V120: # OF WOMEN RAPED	MD=98 OR GE 99
REF 0143	LOC 190 WIDTH 2	DK 3 COL 57-58

About how many women would you guess have been sexually assaulted or raped in your neighborhood in the last year? (GET BEST ESTIMATE) (PROBE: JUST A GUESS WILL DO)

Actual number is coded.

97. 97 or more

- 98. NA
- 99. DK

REF 144-152 WERE ASKED OF FEMALE RESPONDENTS ONLY

.....

VAR 0144	V121: LIKELY-R RAPED	MD=97 OR GE 98
REF 0144	LOC 192 WIDTH 2	DK 3 COL 59-60

--IF CODED 2 [FEMALE] ON REF 8--

(CONTINUED)

On the zero to ten scale we have been using, what do you think your chances are that someone will try to sexually assault you in this neighborhood? Let TEN mean that your chances are EXTREMELY HIGH and ZERO mean that there is NO POSSIBILITY at all. (GET BEST ESTIMATE) (PROBE: JUST A GUESS, 0-10 WILL DO)

00. No possibility

10. Extremely likely

97. DK

98. NA

99. Inap., coded 1 on REF 8

VAR 0145 V122: FEAR OF RAPE-ALONE MD=96 OR GE 97
REF 0145 LOC 194 WIDTH 2 DK 3 COL 61-62

--IF CODED 2 [FEMALE] ON REF 8--

Now, think about the last time you went out alone after dark in your neighborhood. How afraid or worried were you then, about being sexually assaulted or raped? Use the same numbers zero to ten.

00. No possibility

10. Extremely likely

96. Does not go out alone after dark

97. DK

98. NA

99. Inap., coded 1 on REF 8

VAR 0146 V123: KNOW RAPE VICTIM MD=7 OR GE 8
REF 0146 LOC 196 WIDTH 1 DK 3 COL 63

--IF CODED 2 [FEMALE] ON REF 8--

(CONTINUED)

Do you personally know of anyone who has been sexually assaulted?

1. Yes

2. No

7. DK

8. NA; Refused

9. Inap., coded 1 on REF 8

VAR 0147 V124: RESP THE RAPE VICT MD=7 OR GE 8
REF 0147 LOC 197 WIDTH 1 DK 3 COL 64

--IF CODED 1 ON REF 146--

Did this happen to someone you know, or to yourself?

1. Someone you know

2. Yourself

3. Both

7. DK

8. NA

9. Inap., coded other than 1 on REF 146

VAR 0148 V125: REPORT RAPE TO POL MD=7 OR GE 8
REF 0148 LOC 198 WIDTH 1 DK 3 COL 65

--IF CODED 2 OR 3 ON REF 147--

When this happened to you, did you report it to the police?

1. Yes

2. No

7. DK

8. NA; Refused to answer

9. Inap., coded other than 2 or 3 on REF 147

VAR 0149 V126: WHEN RAPE TOOK PLA MD=7 OR GE 8
REF 0149 LOC 199 WIDTH 1 DK 3 COL 66

--IF CODED 1 ON REF 146--

How long ago did this take place?

1. Within past 6 months
2. Seven months - 1 year
3. Between 2 - 5 years ago
4. Between 6 - 10 years ago
5. More than 10 years ago
7. DK
8. NA
9. Inap., coded other than 1 on REF 146

VAR 0150 V127: 1ST RAPE LOCATION MD=7 OR GE 8
REF 0150 LOC 200 WIDTH 1 DK 3 COL 67

--IF CODED 1 ON REF 146--

Where did these sexual assaults happen? -- First mention

1. Present neighborhood
2. City
3. Out-of-town
7. DK
8. NA
9. Inap., coded other than 1 on REF 146

VAR 0151 V128: 2ND RAPE-LOCATION MD=7 OR GE 8
REF 0151 LOC 201 WIDTH 1 DK 3 COL 68

--IF CODED 1 ON REF 146--

Where did these sexual assaults happen? -- Second mention

(CONTINUED)

1. Present neighborhood
2. City
3. Out-of-town
7. DK
8. NA; No further mentions
9. Inap., coded other than 1 on REF 146

VAR 0152 V129: 3RD RAPE-LOCATION MD=7 OR GE 8
REF 0152 LOC 202 WIDTH 1 DK 3 COL 69

--IF CODED 1 ON REF 146--

Where did these sexual assaults happen? -- Third mention

1. Present neighborhood
2. City
3. Out-of-town
7. DK
8. NA; No further mentions
9. Inap., coded other than 1 on REF 146

REF 153-157 WERE ASKED OF MALE RESPONDENTS ONLY

VAR 0153 V130: MEN-LIKELY WOMN RA MD=97 OR GE 98
REF 0153 LOC 203 WIDTH 2 DK 3 COL 70-71

--IF CODED 1 [MALE] ON REF 8--

What do you think the chances are of a woman being sexually assaulted in this neighborhood? Let TEN mean that chances of rape are EXTREMELY HIGH and ZERO mean that there is NO POSSIBILITY at all. (PROBE: JUST A GUESS, 0-10 WILL DO)

(CONTINUED)

00. No possibility

10. Extremely likely

97. DK

98. NA

99. Inap., coded 2 on REF 8

.....
VAR 0154 V131: MEN-KNOW RAPE VICT MD=7 OR GE 8
REF 0154 LOC 205 WIDTH 1 DK 3 COL 72

--IF CODED 1 [MALE] ON REF 8--

Do you personally know of anyone who has been sexually assaulted?

-
1. Yes
2. No

7. DK
8. NA
9. Inap., coded 2 on REF 8

.....
VAR 0155 V132: MEN-1ST RAPE LOCAT MD=7 OR GE 8
REF 0155 LOC 206 WIDTH 1 DK 3 COL 73

--IF CODED 1 ON REF 154--

Where did these sexual assaults happen? -- First mention

-
1. Present neighborhood
2. City
3. Out-of-town

7. DK
8. NA
9. Inap., coded other than 1 on REF 154

VAR 0156 V133: MEN-2ND RAPE LOCAT MD=7 OR GE 8
REF 0156 LOC 207 WIDTH 1 DK 3 COL 74

--IF CODED 1 ON REF 154--

Where did these sexual assaults happen? -- Second mention

-
1. Present neighborhood
2. City
3. Out-of-town

7. DK
8. NA; No further mentions
9. Inap., coded other than 1 on REF 154

.....
VAR 0157 V134: MEN-3RD RAPE LOCAT MD=7 OR GE 8
REF 0157 LOC 208 WIDTH 1 DK 3 COL 75

--IF CODED 1 ON REF 154--

Where did these sexual assaults happen? -- Third mention

-
1. Present neighborhood
2. City
3. Out-of-town

7. DK
8. NA; No further mentions
9. Inap., coded other than 1 on REF 154

.....
VAR 0158 V135: RAPE PRV-HOME SECU MD=7 OR GE 8
REF 0158 LOC 209 WIDTH 1 DK 3 COL 76

There are many different opinions about how to prevent rape or sexual assault from happening. I'm going to mention several possible ways of preventing rape and we'd like to know what, in general, you think about each of these ideas. For each one I read, please tell me how much you think it would help to prevent rape, would it: Help a great deal,

(CONTINUED)

help somewhat, or help hardly at all. (READ CATEGORIES)
(ROTATE)

Stronger security measures at home, like better locks or
alarms. Would they... (READ CATEGORIES)

1. Help hardly at all
2. Help somewhat
3. Help a great deal

7. DK
8. NA

.....
VAR 0159 V136: RAPE PRV-NOT ALONE MD=7 OR GE 8
REF 0159 LOC 210 WIDTH 1 DK 3 COL 77

Women not going out alone, especially at night.

[See REF 158 for complete question text.]

1. Help hardly at all
2. Help somewhat
3. Help a great deal

7. DK
8. NA

.....
VAR 0160 V137: RAPE PRV-DRESS MOD MD=7 OR GE 8
REF 0160 LOC 211 WIDTH 1 DK 3 COL 78

Women dressing more modestly, or in a less sexy way.

[See REF 158 for complete question text.]

1. Help hardly at all
2. Help somewhat
3. Help a great deal

7. DK

(CONTINUED)

8. NA

.....
VAR 0161 V138: RAPE PRV-PSYCH TRT MD=7 OR GE 8
REF 0161 LOC 212 WIDTH 1 DK 3 COL 79

Providing psychological treatment for rapists. Would
this... (READ CATEGORIES)

[See REF 158 for complete question text.]

1. Help hardly at all
2. Help somewhat
3. Help a great deal

7. DK
8. NA

.....
VAR 0162 V139: RAPE PRV-SELF-DEFN MD=7 OR GE 8
REF 0162 LOC 213 WIDTH 1 DK 3 COL 80

Encouraging women to take self-defense classes, like judo or
karate.

[See REF 158 for complete question text.]

1. Help hardly at all
2. Help somewhat
3. Help a great deal

7. DK
8. NA

DECK IDENTIFICATION NUMBER IS '04'

DK 4 COL 1- 2

VAR 0001 ICPSR STUDY NUMBER-8162 NO MISSING DATA CODES
REF 0001 LOC 1 WIDTH 4 DK 4 COL 3- 6

ICPSR Study Number - 8162

8162. The ICPSR has attached this number as a unique data collection identification number.

VAR 0002 ICPSR EDITION NUMBER-1 NO MISSING DATA CODES
REF 0002 LOC 5 WIDTH 1 DK 4 COL 7

ICPSR Edition Number - 1

The number identifying the release edition of the data collection.

1. Spring, 1984 release

VAR 0003 ICPSR PART NUMBER-1 NO MISSING DATA CODES
REF 0003 LOC 6 WIDTH 1 DK 4 COL 8

ICPSR Part Number - 1

1. The entire data collection is contained in one part.

VAR 0004 ICPSR SEQUENCE NUMBER NO MISSING DATA CODES
REF 0004 LOC 7 WIDTH 4 DK 4 COL 9-12

ICPSR Sequential Case Identification Number

The ICPSR has attached a sequential case identification number to every record. This number uniquely identifies each record in the data collection.

VAR 0163 V140: RAPE PRV-CARRY WEA MD=7 OR GE 8
REF 0163 LOC 214 WIDTH 1 DK 4 COL 13

Women carrying weapons for protection, like knives or guns.

[See REF 158 for complete question text.]

1. Help hardly at all
2. Help somewhat
3. Help a great deal

7. DK
8. NA

VAR 0164 V141: RAPE PRV-NEWSPAPER MD=7 OR GE 8
REF 0164 LOC 215 WIDTH 1 DK 4 COL 14

Newspapers publicizing names and pictures of known rapists.

[See REF 158 for complete question text.]

1. Help hardly at all
2. Help somewhat
3. Help a great deal

7. DK
8. NA

VAR 0165 V142: RAPE PRV-STRANGERS MD=7 OR GE 8
REF 0165 LOC 216 WIDTH 1 DK 4 COL 15

Women refusing to talk to strangers. Would this... (READ CATEGORIES)

[See REF 158 for complete question text.]

1. Help hardly at all
2. Help somewhat

(CONTINUED)

3. Help a great deal

7. DK

8. NA

.....

VAR 0166	V143: RAPE PRV-STOP LIB	MD=7 OR GE 8
REF 0166	LOC 217 WIDTH 1	DK 4 COL 16

Stopping the push for women's rights and women's liberation.

[See REF 158 for complete question text.]

1. Help hardly at all
2. Help somewhat
3. Help a great deal

7. DK
8. NA

.....

VAR 0167	V144: RAPE PRV-FIGHT BCK	MD=7 OR GE 8
REF 0167	LOC 218 WIDTH 1	DK 4 COL 17

Rape victims fighting back against their attackers.

[See REF 158 for complete question text.]

1. Help hardly at all
2. Help somewhat
3. Help a great deal

7. DK
8. NA

VAR 0168	V145: RAPE PRV-INC RESPT	MD=7 OR GE 8
REF 0168	LOC 219 WIDTH 1	DK 4 COL 18

Increasing men's respect for all women.

[See REF 158 for complete question text.]

1. Help hardly at all
2. Help somewhat
3. Help a great deal

7. DK
8. NA

.....

VAR 0169	PREVRAP1: 1ST MENTIONED	MD=0 OR GE 99
REF 0169	LOC 220 WIDTH 2	DK 4 COL 19-20

Is there anything else that you can think of that would help prevent rape? (IF YES, WHAT?) -- First mention

01. Stronger security measures at home
02. Increase police
03. Man go with
04. Stiffer penalties
05. Increase men's respect for all women
06. Women not going out alone
07. Women dressing more modestly
08. Avoid parts of town
09. Providing psychological treatment for rapists
10. Encourage women to take self-defense classes
11. Education for public
12. Anti-crime programs
13. Guns, knives, dogs, etc.
14. Vigorous prosecution
15. Publicize names of known rapists
16. Eliminate poverty
17. Reduce TV sex/violence
18. Stop the push for women's liberation
19. Rape victims fighting back against attackers
20. Not hitchhiking
21. Not talking to strangers
22. Be more careful/alert
23. OK prostitution

(CONTINUED)

- 24. Pray/trust in God
- 25. Bring up kids better
- 26. Better lighting
- 27. Castration
- 28. More reporting
- 29. Stay home, especially after dark
- 30. Find reason to stall attacker
- 31. Anti-male attitude
- 32. Anti-female attitude
- 33. Stop publicizing rape
- 34. Get rid of drugs
- 35. Women self-respect
- 97. Nothing can prevent
- 98. Other
- 00. None listed
- 99. NA

.....
VAR 0170 PREVRAP2: 2ND MENTIONED MD=0 OR GE 99
REF 0170 LOC 222 WIDTH 2 DK 4 COL 21-22

Is there anything else that you can think of that would help prevent rape? (IF YES, WHAT?) -- Second mention

[See REF 169 for codes.]

- 00. None listed
- 99. NA

.....
VAR 0171 BESTPREV: BEST RAPE PREV MD=0 OR GE 99
REF 0171 LOC 224 WIDTH 2 DK 4 COL 23-24

From all the things you can think of, which one do you feel would work the BEST to help prevent rape?

[See REF 169 for codes.]

- 00. None listed
- 99. NA

VAR 0172 V146: NUMBER YEARS IN NB MD=97 OR GE 98
REF 0172 LOC 226 WIDTH 2 DK 4 COL 25-26

Finally, we have a few more questions for statistical purposes.

How many years have you personally lived in your present neighborhood?

Actual number is coded.

- 97. DK
- 98. NA

.....
VAR 0173 V147: TYPE OF RESIDENCE MD=7 OR GE 8
REF 0173 LOC 228 WIDTH 1 DK 4 COL 27

Do you live in a single family house, an apartment building with less than 7 units or a building with 7 or more units?

- 1. Single family
- 2. Less than 7 units
- 3. 7 or more units

- 7. DK
- 8. NA

.....
VAR 0174 V148: OWN OR RENT HOME MD=7 OR GE 8
REF 0174 LOC 229 WIDTH 1 DK 4 COL 28

Do you own your home or do you rent it?

- 1. Rent
- 2. Own (includes buying)

- 7. DK
- 8. NA

CONTINUED

1 OF 2

VAR 0175 V149: EXPCT TO STAY 2 YR MD=7 OR GE 8
REF 0175 LOC 230 WIDTH 1 DK 4 COL 29

Do you expect to be living in this neighborhood two years from now?

1. Yes
2. No
3. Maybe/It depends
7. DK
8. NA

VAR 0176 V150: CARRY THEFT INSURA MD=7 OR GE 8
REF 0176 LOC 231 WIDTH 1 DK 4 COL 30

Do you carry an insurance policy which covers your household goods against loss from theft or vandalism?

1. Yes
2. No
7. DK
8. NA

VAR 0177 V151: EDUCATION MD=97 OR GE 98
REF 0177 LOC 232 WIDTH 2 DK 4 COL 31-32

What is the last grade of school you completed?

00. No formal education
01. Grade school or less (grades 1-8)
02. Some high school
03. Graduated high school (grades 9-12)
04. Vocational/Technical school
05. Some college
06. Graduated college
07. Post graduate work

(CONTINUED)

97. DK
98. NA; Refused

VAR 0178 V152: NUMBER OF CHILDREN MD=97 OR GE 98
REF 0178 LOC 234 WIDTH 2 DK 4 COL 33-34

How many children under the age of 18 are currently living with you?

Actual number is coded.

97. DK
98. NA

VAR 0179 V153: EMPLOYMENT SITUATI MD=97 OR GE 98
REF 0179 LOC 236 WIDTH 2 DK 4 COL 35-36

Are you presently employed somewhere or are you unemployed, retired, (a student), (a housewife), or what?

01. Working now
02. With a job, but not at work because of temporary illness, labor dispute, on strike, bad weather
03. Unemployed
04. Retired
05. In school
06. Keeping house
07. Disabled
08. Armed service
09. Other (SPECIFY)

97. DK
98. NA

VAR 0180 OCCUPATN: OCCUPATION NO MISSING DATA CODES
REF 0180 LOC 238 WIDTH 2 DK 4 COL 37-38

--IF CODED 1 OR 2 ON REF 179--

What is your occupation?

CODE LABELS WERE NOT FINALIZED FOR THIS VARIABLE
.....

VAR 0181 V155: TOTL HOUSEHLD INCM MD=6 OR GE 7
REF 0181 LOC 240 WIDTH 1 DK 4 COL 39

Considering all sources of income and all salaries of people who worked last year, what was your total household income in 1976? You don't have to give me an exact amount, I'll just read some categories and you tell me which applies to your household.

- 0. Below \$6,000
- 1. Between \$6,000 to \$9,999
- 2. Between \$10,000 to \$14,999
- 3. Between \$15,000 to \$19,999
- 4. Between \$20,000 to \$24,999
- 5. \$25,000 or over
- 6. Refused
- 7. DK
- 8. NA

.....
VAR 0182 V156: ETHN BACKGRD-P RIC MD=8
REF 0182 LOC 241 WIDTH 1 DK 4 COL 40

Besides being an American, we would like to know what your ethnic background is. For example, is it Irish, Puerto Rican, Afro-American or what?

Ethnic background -- Puerto Rican

- 1. Yes

(CONTINUED)

- 8. Not mentioned

.....
VAR 0183 V157: ETHN BACKGRD-MEXIC MD=8
REF 0183 LOC 242 WIDTH 1 DK 4 COL 41

Ethnic background -- Mexican

[See REF 182 for complete question text.]

- 1. Yes
- 8. Not mentioned

.....
VAR 0184 V158: ETHN BACKGRD-CUBAN MD=8
REF 0184 LOC 243 WIDTH 1 DK 4 COL 42

Ethnic background -- Cuban

[See REF 182 for complete question text.]

- 1. Yes
- 8. Not mentioned

.....
VAR 0185 V159: ETHN BACKGRD-O LAT MD=8
REF 0185 LOC 244 WIDTH 1 DK 4 COL 43

Ethnic background -- Other Latin

[See REF 182 for complete question text.]

- 1. Yes
- 8. Not mentioned

VAR 0186 V160: ETHN BACKGRD-POLSH MD=8
REF 0186 LOC 245 WIDTH 1 DK 4 COL 44

Ethnic background -- Polish

[See REF 182 for complete question text.]

- 1. Yes
- 8. Not mentioned

.....
VAR 0187 V161: ETHN BACKGRD-ITALN MD=8
REF 0187 LOC 246 WIDTH 1 DK 4 COL 45

Ethnic background -- Italian

[See REF 182 for complete question text.]

- 1. Yes
- 8. Not mentioned

.....
VAR 0188 V162: ETHN BACKGRD-IRISH MD=8
REF 0188 LOC 247 WIDTH 1 DK 4 COL 46

Ethnic background -- Irish

[See REF 182 for complete question text.]

- 1. Yes
- 8. Not mentioned

VAR 0189 V163: ETHN BACKGRD-CROAT MD=8
REF 0189 LOC 248 WIDTH 1 DK 4 COL 47

Ethnic background -- Croatian

[See REF 182 for complete question text.]

- 1. Yes
- 8. Not mentioned

.....
VAR 0190 V164: ETHN BACKGRD-O EUR MD=8
REF 0190 LOC 249 WIDTH 1 DK 4 COL 48

Ethnic background -- Other European

[See REF 182 for complete question text.]

- 1. Yes
- 8. Not mentioned

.....
VAR 0191 V165: ETHN BACKGRD-AFROA MD=8
REF 0191 LOC 250 WIDTH 1 DK 4 COL 49

Ethnic background -- Afro-American

[See REF 182 for complete question text.]

- 1. Yes
- 8. Not mentioned

VAR 0192 V166: ETHN BACKGRD-CHINE MD=8
 REF 0192 LOC 251 WIDTH 1 DK 4 COL 50

Ethnic background -- Chinese

[See REF 182 for complete question text.]

- 1. Yes
- 8. Not mentioned

VAR 0193 V167: ETHN BACKGRD-JAPAN MD=8
 REF 0193 LOC 252 WIDTH 1 DK 4 COL 51

Ethnic background -- Japanese

[See REF 182 for complete question text.]

- 1. Yes
- 8. Not mentioned

VAR 0194 V168: ETHN BACKGRD-O ASI MD=8
 REF 0194 LOC 253 WIDTH 1 DK 4 COL 52

Ethnic background -- Other Asian

[See REF 182 for complete question text.]

- 1. Yes
- 8. Not mentioned

VAR 0195 V169: ETHN BACKGRD-OTHER MD=8
 REF 0195 LOC 254 WIDTH 1 DK 4 COL 53

Ethnic background -- Other (RECORD)

[See REF 182 for complete question text.]

- 1. Yes
- 8. Not mentioned

VAR 0196 V170: ETH BCKGD-RF DK NA MD=6 OR GE 7
 REF 0196 LOC 255 WIDTH 1 DK 4 COL 54

Ethnic background -- Refused/Don't know/Not ascertained

[See REF 182 for complete question text.]

- 6. Refused
- 7. DK
- 8. NA

VAR 0197 V171: RACE MD=6 OR GE 7
 REF 0197 LOC 256 WIDTH 1 DK 4 COL 55

For statistical purposes, we would also like to know what racial group you belong to. Are you Black, White, Asian, or something else?

- 1. Black
- 2. White
- 3. Asian
- 4. Other (SPECIFY)
- 6. Refused
- 7. DK
- 8. NA

VAR 0198 V172: NATIVE OR FOREIGN MD=7 OR GE 8
 REF 0198 LOC 257 WIDTH 1 DK 4 COL 56

Were you born in the United States or somewhere else?

1. Born in U.S.
2. Born elsewhere

7. DK
8. NA

.....
 VAR 0199 V173: PHONE LISTED OR UN MD=7 OR GE 8
 REF 0199 LOC 258 WIDTH 1 DK 4 COL 57

By the way, since we picked your number at random, could you tell me if your phone is listed in the phone book or is it unlisted?

1. Listed
2. Unlisted

7. DK
8. NA; Refused

.....
 VAR 0200 V174: ADDTNL PHONE LINES MD=97 OR GE 98
 REF 0200 LOC 259 WIDTH 2 DK 4 COL 58-59

We also need to know how many different telephone NUMBERS you have at home. Do you have another number besides this one? (IF YES, HOW MANY)

Actual number is coded.

97. DK
98. NA

VAR 0201 V175: AGE MD=97 OR GE 98
 REF 0201 LOC 261 WIDTH 2 DK 4 COL 60-61

What is your age?

Actual number is coded.

97. Refused
98. NA

.....
 VAR 0202 V181: RESPONDENTS ENGLISH MD=8
 REF 0202 LOC 263 WIDTH 1 DK 4 COL 62

Respondent's English was:

1. Good
2. Fair
3. Poor

8. NA

.....
 VAR 0203 V182: SPANISH INTERVIEW MD=8
 REF 0203 LOC 264 WIDTH 1 DK 4 COL 63

Was interview taken in Spanish?

1. Yes
2. No

8. NA

88

VAR 0204 V183: RESPONDENTS COOPER MD=8
REF 0204 LOC 265 WIDTH 1 DK 4 COL 64

Respondent was:

1. Very cooperative
2. Fairly cooperative
3. Not very cooperative
8. NA

.....
VAR 0205 V184: RESPONDENTS INTERE MD=8
REF 0205 LOC 266 WIDTH 1 DK 4 COL 65

Respondent seemed:

1. Very interested in interview
2. Somewhat interested
3. Not interested; had to hold his/her attention
8. NA

.....
VAR 0206 V185: RESPONDENTS ACCURA MD=8
REF 0206 LOC 267 WIDTH 1 DK 4 COL 66

Do you believe the information given to you by the
Respondent is...

1. Accurate
2. Inaccurate
8. NA

FREQUENCY

ADDENDUM

*** TABLES -- CROSSTAB AND RANK ORDER STATISTICS ***

MAR 12, 1984 FREQUENCY ADDENDUM FOR ICPSR 8162

TABLES 1

ILLEGAL CHARACTERS IN THE DATA WILL
BE TREATED AS MISSING DATA 1

THE DATA ARE NOT WEIGHTED

5,121 CASES PASSED FILTER

ANALYSIS 1

VARIABLE	V5	AREA												
Code	11	12	13	15	21	22	23	24	25	31	32	33	35	TOTAL
Frequency	450	449	201	540	450	451	200	200	539	453	448	201	539	5,121

ANALYSIS 2

VARIABLE	V6	NUMTELE			
Code	1	2	3	TOTAL	
Frequency	4,346	640	135	5,121	

ANALYSIS 3

VARIABLE	V7	TELEWT			
Code	33	50	100	TOTAL	
Frequency	135	640	4,346	5,121	

ANALYSIS 4

VARIABLE	V8	SEX		
Code	1	2	TOTAL	
Frequency	1,976	3,145	5,121	

MAR 12, 1984 FREQUENCY ADDENDUM FOR ICPSR 8162

TABLES 2

ANALYSIS 5

VARIABLE	V9	SEXWT											
Code	4,221	5,138	5,174	5,180	6,171	6,309	7,038	7,650	7,685	8,077	9,754	10,000	10,470
Frequency	327	308	302	136	289	285	122	318	265	314	282	1,976	104
Code	12,430	TOTAL											
Frequency	93	5,121											

ANALYSIS 6

VARIABLE	V10	V1: TELLING STRNGR IN NE			
Code	1	2	7	8	TOTAL
Frequency	2,712	2,032	326	51	5,121

ANALYSIS 7

VARIABLE	V11	V2: FEEL PART OF NEIGHBO			
Code	1	2	7	8	TOTAL
Frequency	2,801	2,103	162	55	5,121

ANALYSIS 8

VARIABLE	V12	V3: NEIGHBORHD CHANGING			
Code	1	2	3	7	8
Frequency	1,066	1,716	1,802	484	50
					TOTAL
					5,121

MAR 12, 1984 FREQUENCY ADDENDUM FOR ICPSR 8162

TABLES 3

ANALYSIS 9

VARIABLE V13 V4: PEOPLE ON STREET-DRK

Code	1	2	3	4	7	8	TOTAL
Frequency	1,080	2,132	850	792	245	22	5,121

ANALYSIS 10

VARIABLE V14 V5: KEEP EYE ON STREET I

Code	1	2	7	8	TOTAL
Frequency	3,350	1,650	86	35	5,121

ANALYSIS 11

VARIABLE V15 V6: SUSP ACTION:CHCK SIT

Code	1	8	TOTAL
Frequency	443	4,678	5,121

ANALYSIS 12

VARIABLE V16 V7: SUSP ACTION:CALL PDL

Code	1	8	TOTAL
Frequency	3,209	1,912	5,121

ANALYSIS 13

VARIABLE V17 V8: SUSP ACTION:IGNORE

Code	1	8	TOTAL
Frequency	533	4,588	5,121

MAR 12, 1984 FREQUENCY ADDENDUM FOR ICPSR 8162

TABLES 4

ANALYSIS 14

VARIABLE	V18	V9: SUSP ACTION:CALL AND	
Code	1	8	TOTAL
Frequency	125	4,996	5,121

ANALYSIS 15

VARIABLE	V19	V10: SUSP ACTION:CALL R	
Code	1	8	TOTAL
Frequency	371	4,750	5,121

ANALYSIS 16

VARIABLE	V20	V11: SUSP ACTION:DO OTHR	
Code	1	8	TOTAL
Frequency	201	4,920	5,121

ANALYSIS 17

VARIABLE	V21	V12: SUSP ACTION:DK NA	
Code	7	8	TOTAL
Frequency	480	4,641	5,121

ANALYSIS 18

VARIABLE	V22	V13: TIMES VISIT NEIGHBO													
Code	0	1	2	3	4	5	6	7	8	9	10	11	12	14	15
Frequency	2,755	805	716	436	87	50	40	30	9	1	22	1	17	24	8
Code	20	21	24	30	50	55	70	97	98	99	TOTAL				
Frequency	5	2	2	2	1	1	1	2	39	65	5,121				

MAR 12, 1984 FREQUENCY ADDENDUM FOR ICPSR 8162

TABLES 5

ANALYSIS 19

VARIABLE	V23	V14: # OF KIDS KNOW NAME						
Code	1	2	3	4	5	7	8	TOTAL
Frequency	1,194	999	1,847	975	74	14	18	5,121

ANALYSIS 20

VARIABLE	V24	V15: KIDS BETTER TODAY T				
Code	1	2	3	8	9	TOTAL
Frequency	2,543	1,698	659	8	213	5,121

ANALYSIS 21

VARIABLE	V25	V16: PEOPLE DONT RESPECT				
Code	1	2	3	8	9	TOTAL
Frequency	697	687	3,604	4	129	5,121

ANALYSIS 22

VARIABLE	V26	V17: NGHBR5 REDUCE CRIME				
Code	1	2	3	8	9	TOTAL
Frequency	337	378	4,166	16	224	5,121

ANALYSIS 23

VARIABLE	V27	V18: LOT OF CRAZY PEOPLE				
Code	1	2	3	8	9	TOTAL
Frequency	396	519	4,045	15	146	5,121

MAR 12, 1984 FREQUENCY ADDENDUM FOR ICPSR 8162

TABLES 6

ANALYSIS 24

VARIABLE V28 V19: POLICE CANT DO MUCH

Code	1	2	3	8	9	TOTAL
Frequency	2,005	1,015	1,887	19	195	5,121

ANALYSIS 25

VARIABLE V29 V20: EVER GATHERED DISCU

Code	1	2	7	8	TOTAL
Frequency	1,847	3,243	14	17	5,121

ANALYSIS 26

VARIABLE V30 V21: KNOW COMMUNITY GRPS

Code	1	2	7	8	TOTAL
Frequency	2,202	2,868	20	31	5,121

ANALYSIS 27

VARIABLE V31 V22: INVOLVD COMM GROUPS

Code	1	2	7	8	9	TOTAL
Frequency	1,031	1,127	2	41	2,920	5,121

ANALYSIS 28

VARIABLE V32 ORGTYPE1: COMMORG1

Code	0	1	2	3	4	5	6	7	8	9	10	11	19	20	TOTAL
Frequency	4,040	372	160	56	106	87	15	30	50	15	19	60	11	100	5,121

MAR 12, 1984 FREQUENCY ADDENDUM FOR ICPSR 8162

TABLES 7

ANALYSIS 29

VARIABLE V33 ORGTYPE2: COMMORG2

Code	0	1	2	3	4	5	6	7	8	9	10	11	19	20	TOTAL
Frequency	4,843	86	23	9	40	29	3	19	16	4	4	17	2	26	5,121

ANALYSIS 30

VARIABLE V34 ORGTYPE3: COMMORG3

Code	0	1	2	3	4	5	6	7	8	9	10	11	19	20	TOTAL
Frequency	5,045	13	4	4	5	17	1	2	5	4	3	11	1	6	5,121

ANALYSIS 31

VARIABLE V35 ORGTYPE4: COMMORG4

Code	0	1	3	4	5	6	7	8	9	10	11	TOTAL
Frequency	5,103	1	2	3	2	1	1	1	1	2	4	5,121

ANALYSIS 32

VARIABLE V36 V23: # GRPS INVOLVD WITH

Code	1	2	3	4	5	98	99	TOTAL
Frequency	712	177	57	14	4	61	4,096	5,121

ANALYSIS 33

VARIABLE V37 V24: 1ST ORG-TRIED ACTIO

Code	1	2	7	8	9	TOTAL
Frequency	657	237	44	92	4,091	5,121

MAR 12, 1984 FREQUENCY ADDENDUM FOR ICPSR 8162

TABLES 8

ANALYSIS 34

VARIABLE	CRMACT1: COMMORG1 ACT-1															TABLES	
Code	0	1	2	3	4	5	6	7	9	10	11	12	13	14	15		
Frequency	4,445	87	4	3	10	5	5	13	2	4	6	3	36	32	1		
Code	16	17	18	19	20	21	22	23	24	26	27	28	29	31	32		
Frequency	1	33	31	8	33	14	13	6	1	14	43	40	4	6	32		
Code	33	34	35	36	37	38	40	41	42	43	44	45	47	48	49		
Frequency	63	13	1	1	1	1	5	1	3	2	51	1	11	10	9		
Code	50	51	TOTAL														
Frequency	11	2	5,121														

ANALYSIS 35

VARIABLE	V39	CRMACT2: COMMORG1 ACT-2														
Code	0	1	2	3	4	5	6	11	13	14	15	17	18	19	20	
Frequency	4,995	7	1	1	1	1	1	2	2	6	1	10	8	7	2	
Code	21	22	23	24	26	27	28	32	33	34	39	40	42	44	47	
Frequency	5	3	4	6	2	7	11	9	4	3	3	3	1	12	1	
Code	49	50	TOTAL													
Frequency	1	1	5,121													

ANALYSIS 36

VARIABLE	V40	V25: 1ST ORG-R TAKE PART				
Code	1	2	7	8	9	TOTAL
Frequency	499	141	1	16	4,464	5,121

TABLES 9

9

Code	1	2	3	7	8	9	TOTAL
Frequency	3	59	549	19	27	4,464	5,121

Code	1	2	7	8	9	TOTAL
Frequency	162	64	15	790	4,090	5,121

Code	0	1	2	3	4	5	6	7	8	11	12	13	14	17	18
Frequency	4,987	24	1	1	1	1	1	1	1	1	1	4	3	11	5
Code	19	20	21	22	27	28	29	30	31	32	33	34	35	36	40
Frequency	1	8	1	5	6	5	2	1	1	9	14	2	1	1	1
Code	43	44	46	47	50	51	TOTAL								
Frequency	1	11	1	4	1	2	5,121								

Code	0	1	10	13	17	18	19	21	23	24	26	27	29	32	33	
Frequency	5,096	1	1	1	1	1	2	1	2	1	1	3	1	1	2	
Code	34	43	44	47	TOTAL											
Frequency	2	1	2	1	5,121											

MAR 12, 1984 FREQUENCY ADDENDUM FOR ICPSR 8162

TABLES 10

ANALYSIS 41

VARIABLE	V45	V28: 2ND ORG-R TAKE PART
----------	-----	--------------------------

Code	1	2	8	9	TOTAL
Frequency	113	44	5	4,959	5,121

ANALYSIS 42

VARIABLE V46 V29: 2ND ORG-EFFECTIVENESS

Code	1	2	3	7	8	9	TOTAL
Frequency	1	18	130	8	5	4,959	5,121

ANALYSIS 43

VARIABLE V47 V30: 3RD ORG-TRIED ACTIO

Code	1	2	7	8	9	TOTAL
Frequency	45	24	4	958	4,090	5,121

ANALYSIS 44

VARIABLE V48 CRMACT5: COMMORG3 ACT-1

Code	0	1	2	3	6	13	14	17	18	20	21	27	33	34	44
Frequency	5,086	14	1	1	2	1	2	3	1	2	1	1	2	2	1

Code	49	TOTAL
Frequency	1	5,121

MAR 12, 1984 FREQUENCY ADDENDUM FOR ICPSR 8162

TABLES 11

ANALYSIS 45

VARIABLE	V49	CRMACT6: COMMORG3 ACT-2						
Code	0	5	13	18	19	33	44	TOTAL
Frequency	5,113	1	1	1	1	3	1	5,121

ANALYSIS 46

VARIABLE	V50	V31: 3RD ORG-R TAKE PART			
Code	1	2	8	9	TOTAL
Frequency	29	15	1	5,076	5,121

ANALYSIS 47

VARIABLE	V51	V32: 3RD ORG-EFFECTIVENESS			
Code	2	3	7	8	9
Frequency	7	36	1	1	5,076
					5,121

ANALYSIS 48

VARIABLE	V52	V33: SPECIAL CRIME EFFOR			
Code	1	2	7	8	TOTAL
Frequency	809	4,213	62	37	5,121

ANALYSIS 49

VARIABLE	V53	ORGTYP5: PROGRAM-1															
Code	0	1	3	4	5	7	9	10	11	12	13	14	15	16	17		
Frequency	4,432	70	2	5	1	4	1	1	1	1	50	5	5	2	40		
Code	18	20	21	22	23	24	25	26	27	28	29	30	31	32	33		
Frequency	40	22	3	1	3	7	1	2	33	8	2	1	7	20	34		

MAR 12, 1984 FREQUENCY ADDENDUM FOR ICPSR 8162

TABLES 12

Code	34	39	40	43	44	47	49	51	52	53	54	55	56	57	58
Frequency	3	5	1	1	11	5	7	63	45	26	7	26	5	12	15
Code	59	61	62	63	65	67	68	69	70	98	TOTAL				
Frequency	1	1	21	1	16	3	3	4	3	32	5,121				

ANALYSIS 50

VARIABLE V54 ORGTYPE6: PROGRAM-2

Code	0	1	5	7	10	17	18	20	21	23	24	26	27	28	32
Frequency	4,984	18	1	5	2	3	10	3	3	9	4	4	4	2	7
Code	33	34	39	44	47	49	51	52	53	55	57	58	59	62	63
Frequency	7	2	2	10	2	1	8	4	1	3	2	2	1	2	1
Code	64	65	67	68	69	70	98	TOTAL							
Frequency	2	3	2	1	1	4	1	5,121							

ANALYSIS 51

VARIABLE V55 ORGTYPE7: PROGRAM-3

Code	0	2	4	20	26	28	40	51	52	57	70	TOTAL
Frequency	5,111	1	1	1	1	1	1	1	1	1	1	5,121

ANALYSIS 52

VARIABLE V56 V35: POLICE CONTACT IN P

Code	1	2	7	8	TOTAL
Frequency	2,065	3,007	13	36	5,121

MAR 12, 1984 FREQUENCY ADDENDUM FOR ICPSR 8162

TABLES 13

ANALYSIS 53

VARIABLE V57 V36: POL CON-REP CR SELF

Code	1	8	9	TOTAL
Frequency	533	1,532	3,056	5,121

ANALYSIS 54

VARIABLE V58 V37: POL CON-REP CR OTHR

Code	1	8	9	TOTAL
Frequency	373	1,692	3,056	5,121

ANALYSIS 55

VARIABLE V59 V38: POL CON-REPORT GENE

Code	1	8	9	TOTAL
Frequency	367	1,698	3,056	5,121

ANALYSIS 56

VARIABLE V60 V39: POL CON-LACK PROTEC

Code	1	8	9	TOTAL
Frequency	25	2,040	3,056	5,121

ANALYSIS 57

VARIABLE V61 V40: POL CON-COMPLAINTS-

Code	1	8	9	TOTAL
Frequency	91	1,974	3,056	5,121

MAR 12, 1984 FREQUENCY ADDENDUM FOR ICPSR 8162

TABLES 14

ANALYSIS 58

VARIABLE V62 V41: POL CON-REQUEST GEN

Code	1	8	9	TOTAL
Frequency	29	2,036	3,056	5,121

ANALYSIS 59

VARIABLE V63 V42: POL CON-PUBLIC SERV

Code	1	8	9	TOTAL
Frequency	70	1,995	3,056	5,121

ANALYSIS 60

VARIABLE V64 V43: POL CON-REQUEST AMB

Code	1	8	9	TOTAL
Frequency	28	2,037	3,056	5,121

ANALYSIS 61

VARIABLE V65 V44: POL CON-OTHER

Code	1	8	9	TOTAL
Frequency	566	1,499	3,056	5,121

ANALYSIS 62

VARIABLE V66 V45: POL CON-DK NA INAP

Code	7	8	9	TOTAL
Frequency	13	2,051	3,057	5,121

MAR 12, 1984 FREQUENCY ADDENDUM FOR ICPSR 8162

TABLES 15

ANALYSIS 63

VARIABLE V67 V46: PUBLIC OFFCL CONTACT

Code	1	2	7	8	TOTAL
Frequency	790	4,321	3	7	5,121

ANALYSIS 64

VARIABLE V68 V47: PUB OFF-REP CR SELF

Code	1	8	9	TOTAL
Frequency	41	749	4,331	5,121

ANALYSIS 65

VARIABLE V69 V48: PUB OFF-REP CR OTHR

Code	1	8	9	TOTAL
Frequency	27	763	4,331	5,121

ANALYSIS 66

VARIABLE V70 V49: PUB OFF-REPORT GENE

Code	1	8	9	TOTAL
Frequency	63	727	4,331	5,121

ANALYSIS 67

VARIABLE V71 V50: PUB OFF-LACK PROTEC

Code	1	8	9	TOTAL
Frequency	15	775	4,331	5,121

ANALYSIS 68

VARIABLE V72 V51: PUB OFF-COMPLAINTS-

Code	1	8	9	TOTAL
Frequency	38	752	4,331	5,121

ANALYSIS 69

VARIABLE V73 V52: PUB OFF-REQUEST GEN

Code	1	8	9	TOTAL
Frequency	64	726	4,331	5,121

ANALYSIS 70

VARIABLE V74 V53: PUB OFF-PUBLIC SERV

Code	1	8	9	TOTAL
Frequency	223	567	4,331	5,121

ANALYSIS 71

VARIABLE V75 V54: PUB OFF-REQUEST AMB

Code	1	8	9	TOTAL
Frequency	10	780	4,331	5,121

ANALYSIS 72

VARIABLE V76 V55: PUB OFF-OTHER

Code	1	8	9	TOTAL
Frequency	307	483	4,331	5,121

MAR 12, 1984 FREQUENCY ADDENDUM FOR ICPSR 8162

TABLES 17

ANALYSIS 73

VARIABLE V77 V56: PUB OFF-DK NA INAP

Code	7	8	9	TOTAL
Frequency	5	785	4,331	5,121

ANALYSIS 74

VARIABLE V78 V57: NBRHD PROB-TEENAGER

Code	1	2	3	9	TOTAL
Frequency	2,494	1,396	1,128	103	5,121

ANALYSIS 75

VARIABLE V79 V58: NBRHD PROB-ABANDONE

Code	1	2	3	8	9	TOTAL
Frequency	3,718	706	622	1	74	5,121

ANALYSIS 76

VARIABLE V80 V59: NBRHD PROB-DRUGS

Code	1	2	3	8	9	TOTAL
Frequency	1,921	1,128	1,031	3	1,038	5,121

ANALYSIS 77

VARIABLE V81 V60: NBRHD PROB-VANDALIS

Code	1	2	3	8	9	TOTAL
Frequency	2,508	1,412	1,106	3	92	5,121

MAR 12, 1984 FREQUENCY ADDENDUM FOR ICPSR 8162

TABLES 18

ANALYSIS 78

VARIABLE	V82	V61: TIME WHEN CRIME LES			
Code	1	2	7	8	TOTAL
Frequency	3,217	1,295	572	37	5,121

ANALYSIS 79

VARIABLE	V83	V62: WHEN CRIME LESS OF														
Code	1	2	3	4	5	6	7	8	9	10	11	12	13	14	15	
Frequency	18	42	43	30	139	40	66	34	15	499	10	67	21	19	289	
Code	16	17	18	19	20	21	22	23	24	25	26	27	28	29	30	
Frequency	9	90	20	12	483	5	100	10	7	134	2	79	10	2	177	
Code	31	32	33	34	35	36	37	38	39	40	41	42	43	44	45	
Frequency	2	46	4	4	46	3	46	4	3	97	1	23	1	1	15	
Code	46	47	48	50	52	55	56	57	60	62	63	65	67	70	71	
Frequency	2	30	2	57	10	5	1	11	16	1	1	2	3	8	1	
Code	75	77	80	85	90	92	96	97	98	99	TOTAL					
Frequency	8	14	1	1	2	1	64	143	60	1,909	5,121					

ANALYSIS 80

VARIABLE	V84	V63: NBRHD PROB-BURGLARY				
Code	1	2	3	7	8	TOTAL
Frequency	2,124	1,675	1,032	280	10	5,121

TABLES 19

VARIABLE	V85	V64: KNOW BURGLARY VICT
----------	-----	-------------------------

ANALYSIS 82

Code	1	2	7	8	9	TOTAL
Frequency	2,369	511	6	14	2,221	5,121

VARIABLE	V87	V66: # OF BURGLARIES LST
1	1	1
2	2	2
3	3	3
4	4	4
5	5	5
6	6	6
7	7	7
8	8	8
9	9	9
10	10	10
11	11	11
12	12	12
13	13	13
14	14	14
15	15	15
16	16	16
17	17	17
18	18	18
19	19	19
20	20	20
21	21	21
22	22	22
23	23	23
24	24	24
25	25	25
26	26	26
27	27	27
28	28	28
29	29	29
30	30	30
31	31	31
32	32	32
33	33	33
34	34	34
35	35	35
36	36	36
37	37	37
38	38	38
39	39	39
40	40	40
41	41	41
42	42	42
43	43	43
44	44	44
45	45	45
46	46	46
47	47	47
48	48	48
49	49	49
50	50	50
51	51	51
52	52	52
53	53	53
54	54	54
55	55	55
56	56	56
57	57	57
58	58	58
59	59	59
60	60	60
61	61	61
62	62	62
63	63	63
64	64	64
65	65	65
66	66	66
67	67	67
68	68	68
69	69	69
70	70	70
71	71	71
72	72	72
73	73	73
74	74	74
75	75	75
76	76	76
77	77	77
78	78	78
79	79	79
80	80	80
81	81	81
82	82	82
83	83	83
84	84	84
85	85	85
86	86	86
87	87	87
88	88	88
89	89	89
90	90	90
91	91	91
92	92	92
93	93	93
94	94	94
95	95	95
96	96	96
97	97	97
98	98	98
99	99	99
100	100	100

Code	0	1	2	3	4	5	6	7	8	9	10	11	12	13	14
Frequency	653	374	444	368	192	243	157	49	39	13	170	5	78	6	1
Code	15	16	17	18	19	20	21	22	23	24	25	27	30	35	36
Frequency	51	1	1	5	1	90	1	1	2	7	59	1	32	5	4
Code	37	40	45	48	50	52	54	55	57	60	65	67	70	75	90
Frequency	1	16	3	2	55	10	1	1	1	3	1	1	1	3	3
Code	95	100	101	104	120	121	144	150	160	200	240	300	352	362	365
Frequency	1	57	1	3	3	1	1	6	1	9	1	4	1	1	13
Code	400	500	600	900	997	998	999	TOTAL							
Frequency	2	5	1	1	6	97	1,751	5,121							

MAR 12, 1984 FREQUENCY ADDENDUM FOR ICPSR 8162

TABLES 20

ANALYSIS 84

VARIABLE V88 V67: LIKELY-ATTEMPT ROB

Code	0	1	2	3	4	5	6	7	8	9	10	97	98	TOTAL
Frequency	962	305	455	483	331	932	165	214	214	83	499	434	44	5,121

ANALYSIS 85

VARIABLE V89 V68: ANY ACTUAL BREAKINS

Code	1	2	7	8	TOTAL
Frequency	824	4,279	7	11	5,121

ANALYSIS 86

VARIABLE V90 V69: IMP THINGS FOR PROT

Code	1	2	3	4	5	6	7	8	97	98	TOTAL
Frequency	737	1,931	1,268	157	138	341	340	129	55	25	5,121

ANALYSIS 87

VARIABLE V91 V70: PROT-ENGRAVED VALUA

Code	1	2	7	8	TOTAL
Frequency	1,541	3,492	35	53	5,121

ANALYSIS 88

VARIABLE V92 V71: PROT-BARS OR SPECIA

Code	1	2	7	8	TOTAL
Frequency	2,369	2,679	25	48	5,121

MAR 12, 1984 FREQUENCY ADDENDUM FOR ICPSR 8162

TABLES 21

ANALYSIS 89

VARIABLE V93 V72: PROT-PEEPHOLE IN DR

Code	1	2	7	8	TOTAL
Frequency	3,164	1,882	24	51	5,121

ANALYSIS 90

VARIABLE V94 V73: PROT-LEAVE LIGHT ON

Code	1	2	7	8	TOTAL
Frequency	4,088	880	76	77	5,121

ANALYSIS 91

VARIABLE V95 V74: AWAY-NOTIFY POLICE

Code	1	2	7	8	TOTAL
Frequency	476	4,420	106	119	5,121

ANALYSIS 92

VARIABLE V96 V75: AWAY-STOP DELIVERIE

Code	1	2	7	8	TOTAL
Frequency	2,633	2,208	130	150	5,121

ANALYSIS 93

VARIABLE V97 V76: AWAY-NEIGHBOR WATCH

Code	1	2	7	8	TOTAL
Frequency	3,744	1,118	115	144	5,121

ANALYSIS 94

VARIABLE V98 V77: NBRHD PROB-ROBBERY

Code	1	2	3	7	8	TOTAL
Frequency	2,245	1,389	1,141	335	11	5,121

ANALYSIS 95

VARIABLE V99 V78: LIKELY-R ROBBED ON

Code	0	1	2	3	4	5	6	7	8	9	10	97	98	TOTAL
Frequency	1,140	338	493	425	216	817	123	163	212	84	539	507	64	5,121

ANALYSIS 96

VARIABLE V100 V79: KNOW ROBBERY VICTIM

Code	1	2	7	8	TOTAL
Frequency	2,687	2,381	40	13	5,121

ANALYSIS 97

VARIABLE V101 V80: 1ST ROBBERY-LOCATIO

Code	1	2	3	7	8	9	TOTAL
Frequency	1,475	1,113	79	3	16	2,435	5,121

ANALYSIS 98

VARIABLE V102 V81: 2ND ROBBERY-LOCATIO

Code	1	2	3	7	8	9	TOTAL
Frequency	88	145	8	1	2,445	2,434	5,121

MAR 12, 1984 FREQUENCY ADDENDUM FOR ICPSR 8162

TABLES 23

ANALYSIS 99

VARIABLE V103 V82: 3RD ROBBERY-LOCATIO

Code	1	2	3	7	8	9	TOTAL
Frequency	28	29	14	1	2,615	2,434	5,121

ANALYSIS 100

VARIABLE V104 V83: NBRHD PROB-ASSAULT

Code	1	2	3	7	8	TOTAL
Frequency	3,115	1,136	480	361	29	5,121

ANALYSIS 101

VARIABLE V105 V84: LIKELY-R ASSAULT BY

Code	0	1	2	3	4	5	6	7	8	9	10	97	98	TOTAL
Frequency	1,422	439	509	450	189	721	92	116	110	48	368	584	73	5,121

ANALYSIS 102

VARIABLE V106 V85: KNOW ASSAULT VICTIM

Code	1	2	7	8	TOTAL
Frequency	1,796	3,260	51	14	5,121

ANALYSIS 103

VARIABLE V107 V86: 1ST ASSAULT-LOCATIO

Code	1	2	3	7	8	9	TOTAL
Frequency	992	708	74	1	21	3,325	5,121

MAR 12, 1984 FREQUENCY ADDENDUM FOR ICPSR 8162

TABLES 24

ANALYSIS 104

VARIABLE	V108	V87: 2ND ASSAULT-LOCATIO							
Code	1	2	3	7	8	9			TOTAL
Frequency	39	71	12	1	1,673	3,325			5,121

ANALYSIS 105

VARIABLE	V109	V88: 3RD ASSAULT-LOCATIO							
Code	1	2	3	7	8	9			TOTAL
Frequency	11	12	5	1	1,767	3,325			5,121

ANALYSIS 106

VARIABLE	V110	V89: KIND OF PEOPLE ATTA								
Code	1	2	3	4	5	6	7	8		TOTAL
Frequency	2,528	657	117	514	529	410	327	39		5,121

ANALYSIS 107

VARIABLE	V111	V90: SEX OF VICTIMS IN N								
Code	1	2	3	4	5	7	8	9		TOTAL
Frequency	751	1,989	994	376	21	93	121	776		5,121

ANALYSIS 108

VARIABLE	V112	V91: # TIMES-OUT AFTR DK														
Code	0	1	2	3	4	5	6	7	8	9	10	11	12	13	14	
Frequency	1,452	419	587	514	373	371	145	988	15	5	48	3	9	1	13	
Code	15	18	20	30	40	70	97	98								
Frequency	13	2	14	2	1	1	95	50								
									TOTAL							
									5,121							

MAR 12, 1984 FREQUENCY ADDENDUM FOR ICPSR 8162

TABLES 25

ANALYSIS 109

VARIABLE V113 V92: # TIMES-EV ENTRTMNT

Code	0	1	2	3	4	5	6	7	8	9	10	11	12	13	14
Frequency	2,907	552	650	321	216	100	81	63	31	6	29	2	8	1	35
Code	15	20	30	97	98	TOTAL									
Frequency	1	2	1	72	43	5,121									

ANALYSIS 110

VARIABLE V114 V93: GO OUT WITH SOMEONE

Code	1	2	3	7	8	TOTAL
Frequency	2,453	478	1,681	37	472	5,121

ANALYSIS 111

VARIABLE V115 V94: DRIVE NOT WALK AT N

Code	1	2	3	7	8	TOTAL
Frequency	1,477	548	2,557	32	477	5,121

ANALYSIS 112

VARIABLE V116 V95: TAKE PROTCTN AT NGT

Code	1	2	3	7	8	TOTAL
Frequency	3,202	369	1,048	48	454	5,121

MAR 12, 1984 FREQUENCY ADDENDUM FOR ICPSR 8162

ANALYSIS 113

VARIABLE V117 V96: AVOID CERTAIN AREAS

Code	1	2	3	7	8	TOTAL
Frequency	2,509	467	1,489	100	556	5,121

ANALYSIS 114

VARIABLE V118 V97: DISTNC-AVOIDED AREA

Code	0	1	2	3	4	5	6	7	8	9	10	11	12	14	15
Frequency	92	467	416	294	174	154	68	30	38	7	63	2	12	1	19
Code	16	18	20	25	30	35	50	96	98	99	TOTAL				
Frequency	1	1	10	2	2	1	1	6	90	3,170	5,121				

ANALYSIS 115

VARIABLE V119 V98: FEEL SAFE ALONE-NGT

Code	1	2	3	4	7	8	TOTAL
Frequency	1,242	1,905	905	913	116	40	5,121

ANALYSIS 116

VARIABLE V120 V99: FEEL SAFE ALONE-DAY

Code	1	2	3	4	7	8	TOTAL
Frequency	3,659	1,091	201	89	54	27	5,121

MAR 12, 1984 FREQUENCY ADDENDUM FOR ICPSR 8162

TABLES 27

ANALYSIS 117

VARIABLE V121 V100: HOURS WATCH TV

Code	0	1	2	3	4	5	6	7	8	10	TOTAL
Frequency	1,761	762	849	705	413	560	11	2	1	57	5,121

ANALYSIS 118

VARIABLE V122 V101: WATCH NATIONAL NEW

Code	1	2	7	8	9	TOTAL
Frequency	1,526	1,761	10	6	1,818	5,121

ANALYSIS 119

VARIABLE V123 V102: WATCH LOCAL NEWS S

Code	1	2	7	8	9	TOTAL
Frequency	2,183	1,097	19	4	1,818	5,121

ANALYSIS 120

VARIABLE V124 V103: WATCH POLICE OR CR

Code	1	2	7	8	9	TOTAL
Frequency	1,284	1,991	19	9	1,818	5,121

ANALYSIS 121

VARIABLE V125 V104: READ DAILY NEWSPAP

Code	1	2	3	7	8	TOTAL
Frequency	4,154	919	4	10	34	5,121

MAR 12, 1984 FREQUENCY ADDENDUM FOR ICPSR 8162

TABLES 28

ANALYSIS 122

VARIABLE V126 V105: FIRST DAILY READ

Code	10	11	12	13	14	20	22	23	24	25	30	31	33	97	98
Frequency	656	259	24	1	8	586	402	330	4	12	682	99	2	3	1,086

Code	99	TOTAL
Frequency	967	5,121

ANALYSIS 123

VARIABLE V127 V106: SECOND DAILY READ

Code	10	11	12	13	14	22	23	24	25	31	32	33	98	99	TOTAL
Frequency	2	767	49	11	5	234	224	10	22	751	1	9	2,069	967	5,121

ANALYSIS 124

VARIABLE V128 V107: THIRD DAILY READ

Code	11	12	13	14	23	24	25	32	33	98	99	TOTAL
Frequency	1	177	4	5	136	15	8	17	5	3,786	967	5,121

ANALYSIS 125

VARIABLE V129 V108: FOURTH DAILY READ

Code	12	13	14	24	25	33	98	99	TOTAL
Frequency	1	35	1	13	4	80	4,020	967	5,121

MAR 12, 1984 FREQUENCY ADDENDUM FOR ICPSR 8162

TABLES 29

ANALYSIS 126

VARIABLE V130 V109: FIFTH DAILY READ

Code	14	25	33	97	98	99	TOTAL
Frequency	19	1	20	1	4,113	967	5,121

ANALYSIS 127

VARIABLE V131 V110: SIXTH DAILY READ

Code	33	97	98	99	TOTAL
Frequency	1	5	4,147	968	5,121

ANALYSIS 128

VARIABLE V132 V111: READ LOCAL NEWSPAP

Code	1	2	7	8	9	TOTAL
Frequency	2,663	2,384	12	30	32	5,121

ANALYSIS 129

VARIABLE V133 V112: READ CRIME STORIES

Code	1	2	3	7	8	9	TOTAL
Frequency	2,233	2,342	214	264	35	33	5,121

ANALYSIS 130

VARIABLE V134 V113: REMEMBER CRM STORY

Code	1	2	7	8	TOTAL
Frequency	2,836	2,116	85	84	5,121

ANALYSIS 135

VARIABLE V139 V116: PERSON TALKED TO

Code	1	2	3	4	5	6	7	8	9	TOTAL
Frequency	235	261	454	342	752	91	6	38	2,942	5,121

ANALYSIS 136

VARIABLE V140 V117: TALKED ABOUT RAPE-

Code	1	2	3	7	8	TOTAL
Frequency	1,865	2,421	654	121	60	5,121

ANALYSIS 137

VARIABLE V141 V118: NBRHD PROB-RAPE

Code	1	2	3	7	8	TOTAL
Frequency	3,351	886	226	624	34	5,121

ANALYSIS 138

VARIABLE V142 V119: # RAPES IN NBRHD

Code	1	2	3	4	7	8	TOTAL
Frequency	452	2,000	469	951	1,202	47	5,121

ANALYSIS 139

VARIABLE V143 V120: # OF WOMEN RAPED

Code	0	1	2	3	4	5	6	7	8	9	10	12	13	14	15
Frequency	1,425	213	222	141	52	136	54	16	19	5	103	30	2	1	34

Code	16	17	18	20	23	24	25	28	30	35	36	37	40	43	45
Frequency	1	2	1	44	1	1	22	1	18	2	2	1	5	2	1

MAR 12, 1984 FREQUENCY ADDENDUM FOR ICPSR 8162

TABLES 32

Code	49	50	52	60	65	70	75	79	80	96	97	98	99	TOTAL
Frequency	1	25	1	1	1	4	3	2	1	25	26	75	2,399	5,121

ANALYSIS 140

VARIABLE V144 V121: LIKELY-R RAPED

Code	0	1	2	3	4	5	6	7	8	9	10	97	98	99	TOTAL
Frequency	937	239	261	244	120	407	64	68	60	26	170	447	90	1,988	5,121

ANALYSIS 141

VARIABLE V145 V122: FEAR OF RAPE-ALONE

Code	0	1	2	3	4	5	6	7	8	9	10	96	98	99	TOTAL
Frequency	1,011	138	193	161	82	211	49	65	83	39	211	694	200	1,984	5,121

ANALYSIS 142

VARIABLE V146 V123: KNOW RAPE VICTIM

Code	1	2	7	8	9	TOTAL
Frequency	697	2,349	13	86	1,976	5,121

ANALYSIS 143

VARIABLE V147 V124: RESP THE RAPE VICT

Code	1	2	3	7	8	9	TOTAL
Frequency	582	58	24	2	30	4,425	5,121

ANALYSIS 144

VARIABLE V148 V125: REPORT RAPE TO POL

Code	1	2	3	4	5	6	7	8	9	TOTAL
Frequency	37	29	15	5,040						5,121

ANALYSIS 145

VARIABLE V149 V126: WHEN RAPE TOOK PLA

Code	1	2	3	4	5	6	7	8	9	TOTAL
Frequency	138	160	243	53	52	6	42	4,427		5,121

ANALYSIS 146

VARIABLE V150 V127: 1ST RAPE LOCATION

Code	1	2	3	4	5	6	7	8	9	TOTAL
Frequency	208	313	114	10	51	4,425				5,121

ANALYSIS 147

VARIABLE V151 V128: 2ND RAPE-LOCATION

Code	1	2	3	4	5	6	7	8	9	TOTAL
Frequency	6	21	15	2	653	4,424				5,121

ANALYSIS 148

VARIABLE V152 V129: 3RD RAPE-LOCATION

Code	1	2	3	4	5	6	7	8	9	TOTAL
Frequency	4	3	4	1	685	4,424				5,121

MAR 12, 1984 FREQUENCY ADDENDUM FOR ICPSR 8162

TABLES 34

ANALYSIS 149

VARIABLE V153 V130: MEN-LIKELY WOMN RA

Code	0	1	2	3	4	5	6	7	8	9	10	97	98	99	TOTAL
Frequency	302	197	262	217	119	284	71	59	46	22	82	273	37	3,150	5,121

ANALYSIS 150

VARIABLE V154 V131: MEN-KNOW RAPE VICT

Code	1	2	7	8	9	TOTAL
Frequency	454	1,495	11	16	3,145	5,121

ANALYSIS 151

VARIABLE V155 V132: MEN-1ST RAPE LOCAT

Code	1	2	3	7	8	9	TOTAL
Frequency	150	207	77	3	17	4,667	5,121

ANALYSIS 152

VARIABLE V156 V133: MEN-2ND RAPE LOCAT

Code	1	2	3	8	9	TOTAL
Frequency	4	21	14	415	4,667	5,121

ANALYSIS 153

VARIABLE V157 V134: MEN-3RD RAPE LOCAT

Code	1	2	3	8	9	TOTAL
Frequency	1	8	5	446	4,661	5,121

MAR 12, 1984 FREQUENCY ADDENDUM FOR ICPSR 8162

TABLES 35

ANALYSIS 154

VARIABLE V158 V135: RAPE PRV-HOME SECU

Code	1	2	3	7	8	TOTAL
Frequency	554	1,356	3,023	168	20	5,121

ANALYSIS 155

VARIABLE V159 V136: RAPE PRV-NOT ALONE

Code	1	2	3	7	8	TOTAL
Frequency	358	870	3,726	142	25	5,121

ANALYSIS 156

VARIABLE V160 V137: RAPE PRV-DRESS MOD

Code	1	2	3	7	8	TOTAL
Frequency	1,425	1,101	2,365	204	26	5,121

ANALYSIS 157

VARIABLE V161 V138: RAPE PRV-PSYCH TRT

Code	1	2	3	7	8	TOTAL
Frequency	1,121	1,434	1,983	549	34	5,121

ANALYSIS 158

VARIABLE V162 V139: RAPE PRV-SELF-DEFN

Code	1	2	3	7	8	TOTAL
Frequency	562	1,271	3,041	217	30	5,121

MAR 12, 1984 FREQUENCY ADDENDUM FOR ICPSR 8162

TABLES 36

ANALYSIS 159

VARIABLE V163 V140: RAPE PRV-CARRY WEA

Code	1	2	3	7	8	TOTAL
Frequency	2,190	1,261	1,292	339	39	5,121

ANALYSIS 160

VARIABLE V164 V141: RAPE PRV-NEWSPAPER

Code	1	2	3	7	8	TOTAL
Frequency	1,300	1,218	2,167	399	37	5,121

ANALYSIS 161

VARIABLE V165 V142: RAPE PRV-STRANGERS

Code	1	2	3	7	8	TOTAL
Frequency	917	1,352	2,545	278	29	5,121

ANALYSIS 162

VARIABLE V166 V143: RAPE PRV-STOP LIB

Code	1	2	3	7	8	TOTAL
Frequency	3,165	668	585	651	52	5,121

ANALYSIS 163

VARIABLE V167 V144: RAPE PRV-FIGHT BCK

Code	1	2	3	7	8	TOTAL
Frequency	1,460	1,453	1,594	540	74	5,121

MAR 12, 1984 FREQUENCY ADDENDUM FOR ICPSR 8162

TABLES 37

ANALYSIS 164

VARIABLE V168 V145: RAPE PRV-INC RESPT

Code	1	2	3	7	8	TOTAL
Frequency	643	895	3,132	390	61	5,121

ANALYSIS 165

VARIABLE V169 PREVRAP1: 1ST MENTIONED

Code	0	1	2	3	4	5	6	7	8	9	10	11	12	13	14
Frequency	2,850	13	85	7	395	26	143	147	55	36	47	94	25	130	84
Code	15	16	17	18	19	20	21	22	23	24	25	26	27	28	29
Frequency	13	14	35	38	86	32	30	190	61	24	85	28	44	20	75
Code	30	31	32	33	34	35	97	98	99	TOTAL					
Frequency	21	3	11	4	5	14	27	78	46	5,121					

ANALYSIS 166

VARIABLE V170 PREVRAP2: 2ND MENTIONED

Code	0	1	2	4	5	6	7	8	9	10	11	12	13	14	15
Frequency	4,735	3	11	42	7	26	26	19	14	12	8	6	16	22	4
Code	16	17	18	19	20	21	22	23	24	25	26	27	28	29	30
Frequency	5	7	1	14	10	8	32	7	2	9	5	9	1	13	4
Code	32	33	98	99	TOTAL										
Frequency	1	2	15	25	5,121										

TABLES 38

VARIABLE V171 BESTPREV: BEST RAPE PREV

Code	0	1	2	3	4	5	6	7	8	9	10	11	12	13	14
Frequency	1,736	66	73	6	245	123	699	323	46	110	359	70	10	221	51
Code	15	16	17	18	19	20	21	22	23	24	25	26	27	28	29
Frequency	59	6	17	31	71	17	72	233	39	25	69	9	29	6	121
Code	30	31	32	33	34	35	97	98	99	TOTAL					
Frequency	13	3	8	3	4	5	38	57	48	5,121					

VARIABLE	V172	V146: NUMBER YEARS IN NB
----------	------	--------------------------

Code	0	1	2	3	4	5	6	7	8	9	10	11	12	13	14
Frequency	34	757	436	339	284	277	189	223	166	129	209	83	98	77	73
Code	15	16	17	18	19	20	21	22	23	24	25	26	27	28	29
Frequency	144	69	78	92	57	195	48	43	62	40	113	34	35	37	22
Code	30	31	32	33	34	35	36	37	38	39	40	41	42	43	44
Frequency	115	23	25	14	13	56	20	13	14	3	48	7	13	5	6
Code	45	46	47	48	49	50	51	52	53	54	55	56	57	58	59
Frequency	21	6	12	12	3	40	6	5	2	5	11	5	5	2	1
Code	60	62	63	65	66	67	68	69	71	72	73	81	83	91	97
Frequency	8	2	3	4	1	1	1	2	1	1	1	1	1	1	23
Code	98	TOTAL													
Frequency	116	5,121													

MAR 12, 1984 FREQUENCY ADDENDUM FOR ICPSR 8162

TABLES 39

ANALYSIS 169

VARIABLE V173 V147: TYPE OF RESIDENCE

Code	1	2	3	7	8	TOTAL
Frequency	2,525	1,705	783	7	101	5,121

ANALYSIS 170

VARIABLE V174 V148: OWN OR RENT HOME

Code	1	2	7	8	TOTAL
Frequency	2,648	2,282	8	183	5,121

ANALYSIS 171

VARIABLE V175 V149: EXPCT TO STAY 2 YR

Code	1	2	3	7	8	TOTAL
Frequency	3,207	1,132	489	182	111	5,121

ANALYSIS 172

VARIABLE V176 V150: CARRY THEFT INSURA

Code	1	2	7	8	TOTAL
Frequency	3,225	1,630	105	161	5,121

ANALYSIS 173

VARIABLE V177 V151: EDUCATION

Code	0	1	2	3	4	5	6	7	97	98	TOTAL
Frequency	24	394	659	1,818	96	1,029	629	295	28	149	5,121

MAR 12, 1984 FREQUENCY ADDENDUM FOR ICPSR 8162

TABLES 40

ANALYSIS 174

VARIABLE V178 V152: NUMBER OF CHILDREN

Code	0	1	2	3	4	5	6	7	8	10	13	18	97	98	TOTAL
Frequency	2,938	792	645	310	170	63	21	13	5	1	1	1	10	151	5,121

ANALYSIS 175

VARIABLE V179 V153: EMPLOYMENT SITUATI

Code	1	2	3	4	5	6	7	8	9	97	98	TOTAL
Frequency	2,970	41	607	502	307	397	66	2	64	4	161	5,121

ANALYSIS 176

VARIABLE V180 OCCUPATN: OCCUPATION

Code	0	1	2	3	4	5	6	7	8	9	10	TOTAL
Frequency	2,005	135	284	730	620	534	438	77	129	70	99	5,121

ANALYSIS 177

VARIABLE V181 V155: TOTL HOUSEHLD INCM

Code	0	1	2	3	4	5	6	7	8	TOTAL
Frequency	832	828	1,006	620	283	314	593	442	203	5,121

ANALYSIS 178

VARIABLE V182 V156: ETHN BACKGRD-P RIC

Code	1	8	TOTAL
Frequency	165	4,956	5,121

MAR 12, 1984 FREQUENCY ADDENDUM FOR ICPSR 8162

TABLES 41

ANALYSIS 179

VARIABLE V183 V157: ETHN BACKGRD-MEXIC

Code	1	8	TOTAL
Frequency	176	4,945	5,121

ANALYSIS 180

VARIABLE V184 V158: ETHN BACKGRD-CUBAN

Code	1	8	TOTAL
Frequency	13	5,108	5,121

ANALYSIS 181

VARIABLE V185 V159: ETHN BACKGRD-O LAT

Code	1	8	TOTAL
Frequency	65	5,056	5,121

ANALYSIS 182

VARIABLE V186 V160: ETHN BACKGRD-POLSH

Code	1	8	TOTAL
Frequency	264	4,857	5,121

ANALYSIS 183

VARIABLE V187 V161: ETHN BACKGRD-ITALN

Code	1	8	TOTAL
Frequency	476	4,645	5,121

MAR 12, 1984 FREQUENCY ADDENDUM FOR ICPSR 8162

TABLES 42

ANALYSIS 184

VARIABLE V188 V162: ETHN BACKGRD-IRISH

Code	1	8	TOTAL
Frequency	551	4,570	5,121

ANALYSIS 185

VARIABLE V189 V163: ETHN BACKGRD-CROAT

Code	1	8	TOTAL
Frequency	16	5,105	5,121

ANALYSIS 186

VARIABLE V190 V164: ETHN BACKGRD-O EUR

Code	1	8	TOTAL
Frequency	651	4,470	5,121

ANALYSIS 187

VARIABLE V191 V165: ETHN BACKGRD-AFROA

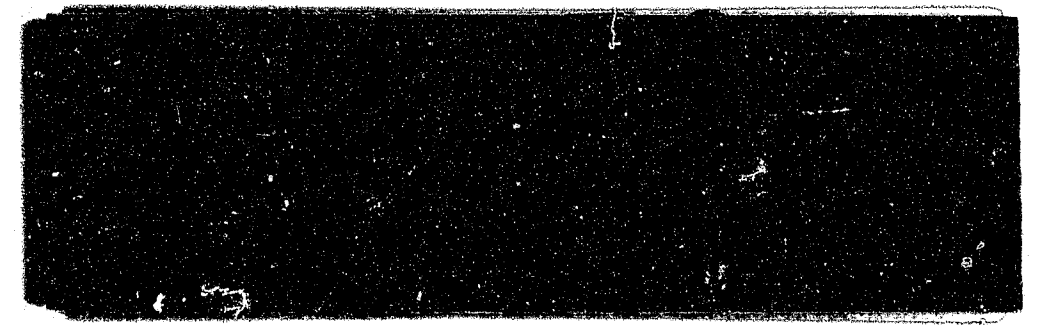
Code	1	8	TOTAL
Frequency	1,447	3,674	5,121

ANALYSIS 188

VARIABLE V192 V166: ETHN BACKGRD-CHINE

Code	1	8	TOTAL
Frequency	75	5,046	5,121

CONTINUED



MAR 12, 1984 FREQUENCY ADDENDUM FOR ICPSR 8162

TABLES 43

ANALYSIS 189

VARIABLE V193 V167: ETHN BACKGRD-JAPAN

Code	1	8	TOTAL
Frequency	33	5,088	5,121

ANALYSIS 190

VARIABLE V194 V168: ETHN BACKGRD-O ASI

Code	1	8	TOTAL
Frequency	35	5,086	5,121

ANALYSIS 191

VARIABLE V195 V169: ETHN BACKGRD-OTHER

Code	1	8	TOTAL
Frequency	1,193	3,928	5,121

ANALYSIS 192

VARIABLE V196 V170: ETH BCKGD-RF DK NA

Code	6	7	8	TOTAL
Frequency	166	39	4,916	5,121

ANALYSIS 193

VARIABLE V197 V171: RACE

Code	1	2	3	4	6	7	8	TOTAL
Frequency	1,538	2,887	206	278	112	33	67	5,121

MAR 12, 1984 FREQUENCY ADDENDUM FOR ICPSR 8162

TABLES 44

ANALYSIS 194

VARIABLE V198 V172: NATIVE OR FOREIGN

Code	1	2	7	8	TOTAL
Frequency	4,267	735	3	116	5,121

ANALYSIS 195

VARIABLE V199 V173: PHONE LISTED OR UN

Code	1	2	7	8	TOTAL
Frequency	2,377	2,534	52	158	5,121

ANALYSIS 196

VARIABLE V200 V174: ADDTNL PHONE LINES

Code	0	1	2	3	4	7	97	98	TOTAL
Frequency	3,985	640	111	20	3	1	21	340	5,121

ANALYSIS 197

VARIABLE V201 V175: AGE

Code	13	15	16	17	18	19	20	21	22	23	24	25	26	27	28
Frequency	1	1	1	5	138	118	97	118	140	172	171	169	165	179	166
Code	29	30	31	32	33	34	35	36	37	38	39	40	41	42	43
Frequency	155	201	126	123	116	90	140	70	74	75	55	95	47	73	60
Code	44	45	46	47	48	49	50	51	52	53	54	55	56	57	58
Frequency	52	67	50	49	65	48	115	41	63	64	52	72	63	50	45
Code	59	60	61	62	63	64	65	66	67	68	69	70	71	72	73
Frequency	50	77	30	54	37	27	61	44	27	35	20	43	21	27	22

MAR 12, 1984 FREQUENCY ADDENDUM FOR ICPSR 8162

Code	74	75	76	77	78	79	80	81	82	83	84	85	86	87	89
Frequency	14	19	14	18	15	15	13	8	5	7	4	3	5	2	2
Code	90	91	93	97	98	TOTAL									
Frequency	1	2	2	254	103	5,121									

ANALYSIS 198

VARIABLE V202 V181: RESPONDENTS ENGLISH

Code	1	2	3	8	TOTAL
Frequency	4,381	506	86	148	5,121

ANALYSIS 199

VARIABLE V203 V182: SPANISH INTERVIEW

Code	1	2	8	TOTAL
Frequency	304	4,717	100	5,121

ANALYSIS 200

VARIABLE V204 V183: RESPONDENTS COOPER

Code	1	2	3	8	TOTAL
Frequency	3,864	1,065	138	54	5,121

ANALYSIS 201

VARIABLE V205 V184: RESPONDENTS INTERE

Code	1	2	3	8	TOTAL
Frequency	3,171	1,657	254	39	5,121

MAR 12, 1984 FREQUENCY ADDENDUM FOR ICPSR 8162

TABLES 46

ANALYSIS 202

VARIABLE V206 V185: RESPONDENTS ACCURA

Code	1	2	8	TOTAL
Frequency	4,903	149	69	5,121

***** Normal termination of TABLES \$ 2.05 14.69 secs

END