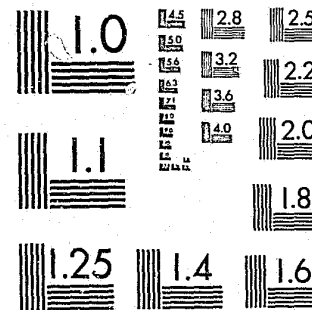


National Criminal Justice Reference Service

**ncjrs**

This microfiche was produced from documents received for inclusion in the NCJRS data base. Since NCJRS cannot exercise control over the physical condition of the documents submitted, the individual frame quality will vary. The resolution chart on this frame may be used to evaluate the document quality.



MICROCOPY RESOLUTION TEST CHART  
NATIONAL BUREAU OF STANDARDS-1963-A

Microfilming procedures used to create this fiche comply with the standards set forth in 41CFR 101-11.504.

Points of view or opinions stated in this document are those of the author(s) and do not represent the official position or policies of the U. S. Department of Justice.

National Institute of Justice  
United States Department of Justice  
Washington, D. C. 20531

4/10/85

**ICPSR**

**Inter-university Consortium for  
Political and Social Research**

## **Juvenile Detention and Correctional Facility Census of 1974**

**Law Enforcement  
Assistance Administration**

96121

ICPSR 7706

U.S. Department of Justice  
National Institute of Justice

This document has been reproduced exactly as received from the person or organization originating it. Points of view or opinions stated in this document are those of the authors and do not necessarily represent the official position or policies of the National Institute of Justice.

Permission to reproduce this copyrighted material has been granted by

Public Domain

U.S. Department of Justice

to the National Criminal Justice Reference Service (NCJRS).

Further reproduction outside of the NCJRS system requires permission of the copyright owner.

96121  
JUVENILE DETENTION AND CORRECTIONAL

FACILITY CENSUS OF 1974

(ICPSR STUDY 7706)

PRINCIPAL INVESTIGATOR

THE LAW ENFORCEMENT ASSISTANCE  
ADMINISTRATION

ICPSR EDITION  
FIRST PRINTING, 1979

INTER-UNIVERSITY CONSORTIUM FOR  
POLITICAL AND SOCIAL RESEARCH  
P.O. BOX 1248  
ANN ARBOR, MICHIGAN 48106

## ACKNOWLEDGEMENT OF ASSISTANCE

All manuscripts utilizing data made available through the Consortium should acknowledge that fact as well as identify the original collector of the data. The ICPSR council urges all users of the ICPSR data facilities to follow some adaptation of this statement with the parentheses indicating items to be filled in appropriately or deleted by the individual user.

THE DATA (AND TABULATIONS) UTILIZED IN THIS (PUBLICATION) WERE MADE AVAILABLE (IN PART) BY THE INTER-UNIVERSITY CONSORTIUM FOR POLITICAL AND SOCIAL RESEARCH. THE DATA FOR THE JUVENILE DETENTION AND CORRECTIONAL FACILITY CENSUS OF 1974 WERE ORIGINALLY COLLECTED BY THE BUREAU OF THE CENSUS FOR THE LAW ENFORCEMENT ASSISTANCE ADMINISTRATION AND THE DEPARTMENT OF HEALTH, EDUCATION AND WELFARE.

In order to provide funding agencies with essential information about the use of archival resources and to facilitate the exchange of information about ICPSR participants' research activities, each user of ICPSR data facilities is expected to send two copies of each completed manuscript (or thesis abstract) to the Consortium. Please indicate in the cover letter which data were used.

## TABLE OF CONTENTS

### INTRODUCTION

Study Description	I
Data Collection Procedures	II
Codebook Information	III
File Structure	V
ICPSR Processing Information	V
VARIABLE DESCRIPTION LIST	VI
CODEBOOK	1
GLOSSARY	59
QUESTIONNAIRE APPENDIX A	63
COUNTY CODE APPENDIX B	71

NCJRS

JAN 7 1985

ACQUISITIONS

## STUDY DESCRIPTION

The Juvenile Detention and Correctional Facility Census of 1974 was the third in a series of surveys of state, and local public facilities in the juvenile justice system. The first of these major surveys was designed by the Law Enforcement Assistance Administration (LEAA) and the Department of Health, Education and Welfare (HEW). The data collection for the three surveys (1971, 1973 and 1974) was performed by the Bureau of the Census. The 1974 census was the first one in the series to cover both public and private juvenile detention and correctional facilities. Data in this study are the results of the public sector survey.

Documentation for the Juvenile Detention and Correctional Facility Census is comprised of three parts: an introduction (this document), an OSIRIS dictionary-codebook and a glossary of terms and concepts used in the survey.

The Census surveyed the number and kinds of juvenile detention facilities with a resident population of at least 50 percent juveniles (This last criterion did not apply to facilities that held youthful offenders in addition to juveniles. A facility was included if it was considered a juvenile facility, even though the youthful offenders outnumbered juveniles at the time of the census.). Specifically excluded were juvenile detention centers operated as part of a jail and without a separate staff or budget, nonresidential facilities, facilities exclusively for drug abusers or for dependent and neglected children, foster homes and federal juvenile correctional facilities.

On June 30, 1974, the 829 public facilities were divided into 396 state-administered and 433 locally administered places. Distributed by type of facility, there were 330 detention centers; 21 shelters; 20 reception or diagnostic centers; 186 training schools; 107 ranches, forestry camps and farms; and 165 halfway houses and group homes.

Included in the survey are the total number of juveniles held as of June 30, 1974 as well as the breakdown of the numbers in each type of facility. Also included are numbers and breakdown (by sex) of detention and status offenses for juveniles; numbers of full-time/part-time, payroll/nonpayroll staff; capital, total operating and per capita expenditure. Capital expenditures frequently do not reflect the original cost of newly constructed facilities, however; such costs are incurred before the facilities become operational.

## II

### DATA COLLECTION PROCEDURES

The 1974 census was conducted by mail and questionnaires were mailed in November of 1974 to the facilities. The questionnaires were sent to central reporters (state/local agencies). The remaining questionnaires were mailed directly to the individual facilities.

The mailing list used in the 1974 census was that which was used in the 1973 census, updated from the 1973-74 edition of the Directory of Correctional Institutions and Agencies, published by the American Correctional Association and the 1974 State Comprehensive Law Enforcement Plans prepared by each State for LEAA. The updated list was then sent to juvenile correctional authorities in the respective states for review and correction.

The 1974 survey had a 100% response rate and is the universe. There is then no sampling or weighting information needed for this survey.

## III

### CODEBOOK INFORMATION

The example below is a reproduction of information appearing in the machine-readable codebook for a typical variable. The numbers in brackets do not appear, but are references to the descriptions which follow this example.

```

.....
[1] VAR 006    [2] LEVEL OF GOVERNMENT [3] MD=9
REF 006    [4] LOC 12    WIDTH 1 [5] DK 1 COL 15
                        [6] -----

[7] Q20a. LEVEL OF GOVERNMENT ADMINISTERING FACILITY
.....
[8] -----
[9] -----

[10] [11]
0.   State level
1.   County level
2.   City level
.....

```

[1] Indicates the variable and reference numbers. A variable and reference number are assigned to each item in the study. In this codebook, documenting the archived dataset, these numbers are identical. Should the data be formed into a fixed length record file, new variable numbers may be assigned or created. The reference number would remain unchanged and correspond to those in this codebook.

[2] Indicates the abbreviated (24 character maximum) variable label used within OSIRIS to identify each variable description list.

#### IV

[3] Indicates the designation of missing data. In this example, code values equal to nine are missing data (MD=9). Although this value is defined as within the missing data categories, this does not mean that the user should not or can not use this code value in a substantive role if he/she so desires.

[4] Indicates the sequential location and width of this variable within the record when the data are stored on magnetic tape. In this example, the variable named "LEVEL OF GOVERNMENT" is one column wide and located in the 12th column within the record.

[5] Indicates the location by deck and column(s) of this variable when the data are on cards or in card image form.

[6] A variable containing data with implied decimals is denoted by the message, "XX DEC PLACE(S)", where XX is the number of decimal places implied (not punched) in the variable.

[7] Indicates the full text of the question supplied by the original collectors of the data. This is the wording used on the original questionnaire.

[8] Indicates an additional comment or explanation appended to the variable description.

[9] A variable which has a footnote associated with it is denoted by the message, "SEE NOTE(S) X", where X is the number of the footnote referenced.

[10] Indicates the code values occurring in the data for this variable.

[11] Indicates the textual definitions of the codes.

#### V

##### FILE STRUCTURE

The data are available from the ICPSR in two formats: a card image file and an OSIRIS dataset. The card image file contains 8 decks per respondent in a format based on 80 column punched cards. The data are sorted by respondent with all decks for a case together in ascending order. The OSIRIS dictionary gives the format and other information for each variable in the OSIRIS data file. The dictionary or dictionary-codebook file is used in conjunction with the OSIRIS software package. The OSIRIS data file is constructed with a single logical record of 581 bytes for each respondent.

The OSIRIS data file can be accessed directly by software packages which do not use the OSIRIS dictionary by specifying the tape locations of the desired variables. These tape locations are given in the OSIRIS dictionary-codebook.

##### ICPSR PROCESSING INFORMATION

The ICPSR has added to the data a series of identification variables. The first variable is a unique study identification number [7706] that the ICPSR gave to this study. The second variable is a version number. Starting with one, it will increment by one, each time the ICPSR re-releases the study. The third variable is a file number that indicates the particular file's sequence in the complete dataset. In this case, the study is completely contained in one data file. The fourth variable is a sequential identification number the ICPSR has added that uniquely identifies each record in the dataset. All the variables are numeric character and the ranges have been documented in the codebook. Consistency checks have been performed on the data.

# VI

## VARIABLE DESCRIPTION LIST

VAR.  
NO.

### ICPSR Information Variables

1. ICPSR Study Number - 7706
2. ICPSR Version number - 001
3. ICPSR File Number - 001
4. ICPSR Sequential Identification Number - Unique Numbers Assigned to Each Case

### Agency Identification Information

5. State in Which Facility Is Located
6. Level of Government Administering Facility
7. County in Which Facility Is Located
8. City in Which Facility Is Located
9. Check Digit
10. Type of New Agency
11. Type of New Facility
12. Unique Number for New Agency
13. Sex of New Agency's Population
14. Employee Code for New Agency
15. Resident Code for New Agency
16. Type of Old Agency
17. Type of Old Facility
18. Unique Number for Old Facility
19. Sex of Old Agency's Population
20. Employee Code for Old Agency
21. Resident Code for Old Agency

### Annual Period Covered in Report

22. Month Annual Period Begins
23. Day Annual Period Begins
24. Year Annual Period Begins
25. Month Annual Period Ends
26. Day Annual Period Ends
27. Year Annual Period Ends

### Characteristics of Facility

28. Type of Facility
29. Administration of Facility
30. Sex of Facility's Residents

# VII

## Movement Into the Institution

31. Total Number of Males Admitted
32. Total Number of Females Admitted
33. Males Admitted for First Court Commitment
34. Females Admitted for First Court Commitment
35. Males Recommitted by Court
36. Females Recommitted by Court
37. Males Returned from Parole
38. Females Returned from Parole
39. Males Transferred In
40. Females Transferred In
41. Males Admitted for Other Reasons
42. Females Admitted for Other Reasons

## Movement Out of Institution

43. Total Number of Males Released
44. Total Number of Females Released
45. Males Discharged
46. Females Discharged
47. Males Released to Institution's Parole Program
48. Females Released to Institution's Parole Program
49. Males Released to Other Parole Programs
50. Females Released to Other Parole Programs
51. Males Transferred to Another Institution
52. Females Transferred to Another Institution
53. Males Released for Other Reasons
54. Females Released for Other Reasons

## Admissions and Discharges - Total

55. Number of Males Admitted to Custody
56. Number of Females Admitted to Custody
57. Number of Males Discharged
58. Number of Females Discharged
59. Number of Males in Custody on 6-30-74
60. Number of Females in Custody on 6-30-74

## Status of Juveniles in Residence on 6-30-74

61. Number of Adjudicated Delinquent Males
62. Number of Adjudicated Delinquent Females
63. Number of Male Status Offenders
64. Number of Female Status Offenders
65. Males Held Pending Court Disposition
66. Females Held Pending Court Disposition
67. Males Waiting for Transfer
68. Females Waiting for Transfer

# VIII

69. Males Committed Voluntarily
70. Females Committed Voluntarily
71. Dependent and Neglected Males
72. Dependent and Neglected Females
73. Average Daily Male Population
74. Average Daily Female Population

## Offense and Sex of Juveniles in Residence on 6-30-74

75. Number of Males Adjudicated Delinquent
76. Number of Females Adjudicated Delinquent
77. Number of Male Status Offenders
78. Number of Female Status Offenders
79. Males Adjudicated for Felonies
80. Females Adjudicated for Felonies
81. Males Under Supervision for Felonies
82. Females Under Supervision for Felonies
83. Males Adjudicated for Misdemeanors
84. Females Adjudicated for Misdemeanors
85. Males Under Supervision for Misdemeanors
86. Females Under Supervision for Misdemeanors
87. Males Adjudicated for Drug Offenses
88. Females Adjudicated for Drug Offenses
89. Males Under Supervision for Drug Offenses
90. Females Under Supervision for Drug Offenses
91. Males Adjudicated for Juvenile Offenses
92. Females Adjudicated for Juvenile Offenses
93. Males Under Supervision for Juvenile Offenses
94. Females Under Supervision for Juvenile Offenses
95. Males Adjudicated for Unknown Offense
96. Females Adjudicated for Unknown Offense
97. Males Under Supervision for Unknown Offense
98. Females Under Supervision for Unknown Offense

## Juveniles' Ages and Length of Stay

99. Facility's Capacity for Male Residents
100. Facility's Capacity for Female Residents
101. Age of Youngest Male
102. Age of Youngest Female
103. Age of Oldest Male
104. Age of Oldest Female
105. Average Age of Males
106. Average Age of Females
107. Average Number of Months Juveniles Are in Residence
108. Average Number of Days Juveniles Are in Residence

# IX

## Status and Tasks of Facility's Staff

109. Number of Full-time Payroll Employees
110. Number of Part-time Payroll Employees
111. Number of Full-time Nonpayroll Employees
112. Number of Part-time Nonpayroll Employees
113. Full-time Payroll Administrators
114. Part-time Payroll Administrators
115. Full-time Nonpayroll Administrators
116. Part-time Nonpayroll Administrators
117. Full-time Payroll Treatment Employees
118. Part-time Payroll Treatment Employees
119. Full-time Nonpayroll Treatment Employees
120. Part-time Nonpayroll Treatment Employees
121. Full-time Payroll Custodial Employees
122. Part-time Payroll Custodial Employees
123. Full-time Nonpayroll Custodial Employees
124. Part-time Nonpayroll Custodial Employees
125. Full-time Payroll Other Employees
126. Part-time Payroll Other Employees
127. Full-time Nonpayroll Other Employees
128. Part-time Nonpayroll Other Employees

## Calendar and Expenditures for Annual Period

129. Month Annual Period Begins
130. Year Annual Period Begins
131. Month Annual Period Ends
132. Year Annual Period Ends
133. Total Expenditures for Gross Salaries and Wages
134. Total Other Operational Expenditures
135. Total Capital Expenditures
136. Portion of Population Facility Has I.Q. Records For

VAR 0004  
REF 0004

SEQUENTIAL ID NUMBER  
LOC 7 WIDTH 3

NO MISSING DATA CODES  
DK 1 COL 1- 3

Case Identification Number  
-----

The ICPSR has attached a sequential case identification number to every record. This number uniquely identifies each record in this survey.

'01' DECK NUMBER  
-----

DK 1 COL 4- 5

VAR 0001  
REF 0001

STUDY ID NUMBER  
LOC 1 WIDTH 4

NO MISSING DATA CODES  
DK 1 COL 6- 9

ICPSR Study Number  
-----

7706. The ICPSR has attached this number as a study identification number.

VAR 0002  
REF 0002

VERSION NUMBER  
LOC 5 WIDTH 1

NO MISSING DATA CODES  
DK 1 COL 10

Version Number  
-----

1. This is the first ICPSR version of the study.

VAR 0003  
REF 0003

FILE NUMBER  
LOC 6 WIDTH 1

NO MISSING DATA CODES  
DK 1 COL 11

File Number  
-----

1. The entire study is contained in one file, with 829 records and a record length of 581.

VAR 0005 STATE  
REF 0005 LOC 10 WIDTH 2

MD=99  
DK 1 COL 12-13

-----  
Governments Division State Codes  
-----

01. Alabama	27. Montana
02. Alaska	28. Nebraska
03. Arizona	29. Nevada
04. Arkansas	30. New Hampshire
05. California	31. New Jersey
06. Colorado	32. New Mexico
07. Connecticut	33. New York
08. Delaware	34. North Carolina
09. District of Columbia	35. North Dakota
10. Florida	36. Ohio
11. Georgia	37. Oklahoma
12. Hawaii	38. Oregon
13. Idaho	39. Pennsylvania
14. Illinois	40. Rhode Island
15. Indiana	41. South Carolina
16. Iowa	42. South Dakota
17. Kansas	43. Tennessee
18. Kentucky	44. Texas
19. Louisiana	45. Utah
20. Maine	46. Vermont
21. Maryland	47. Virginia
22. Massachusetts	48. Washington
23. Michigan	49. West Virginia
24. Minnesota	50. Wisconsin
25. Mississippi	51. Wyoming
26. Missouri	

-----  
VAR 0006 LEVEL OF GOVERNMENT  
REF 0006 LOC 12 WIDTH 1

MD=9  
DK 1 COL 14

-----  
Level of Government Administering Facility  
-----

0. State level  
1. County level  
2. City level

VAR 0007 COUNTY  
REF 0007 LOC 13 WIDTH 3

MD=999  
DK 1 COL 15-17

-----  
County code  
-----

County codes are sequential numbers within each state and range from 1 to 240. When the facility is operated by the county, then the city code (Var.8) is coded the same as the county code. If the facility is operated by the state then the county code is the sequential number and the city code (Var.8) is coded 0 for the record. See Appendix B for County code listing.

.....

VAR 0008 CITY  
REF 0008 LOC 16 WIDTH 3

MD=999  
DK 1 COL 18-20

-----  
City code  
-----

City codes are sequential numbers within each county and range from 1 to 701 when facilities are operated by the city. When the facility is operated by the county, the city code is the same as the county code (Var.3). Codes of 0 indicate the facility is operated by the state.

.....

VAR 0009 CHECK DIGIT  
REF 0009 LOC 19 WIDTH 1

MD=9  
DK 1 COL 21

-----  
Check Digit  
-----

0. Zero  
.  
.  
.  
9. Nine

VAR 0010 TYPE OF NEW AGENCY MD=0  
REF 0010 LOC 20 WIDTH 1 DK 1 COL 22

New Agency Identification Code (New Agency Identification Number)  
-----

5. Juvenile Detention or Correctional Facility (New Agency ID Number)  
-----

VAR 0011 TYPE OF NEW FACILITY MD=0  
REF 0011 LOC 21 WIDTH 1 DK 1 COL 23

Type of Juvenile Facility (New Agency Identification Number)  
-----

1. Detention Center
2. Shelter
3. Juvenile Reception or Diagnostic Center
4. Training School
5. Ranch, Forestry Camp or Farm
6. Halfway House
7. Group Home
8. Non-residential community program
9. Other

VAR 0012 NEW UNIQUE NUMBER MD=-1  
REF 0012 LOC 22 WIDTH 2 DK 1 COL 24-25

Unique Number for New Agency Identification (New Agency ID Number)  
-----

Identification number to uniquely identify a facility of a given type, within a unit of government

VAR 0013 NEW AGENCY SEX MD=0  
REF 0013 LOC 24 WIDTH 1 DK 1 COL 26

Q.II C(1). Does this facility hold (New Agency Identification Number) -  
-----

1. Males only
2. Females only
3. Both Males and Females
4. Unknown

VAR 0014 NEW AGCY EMPLOY CODE MD=0  
REF 0014 LOC 25 WIDTH 1 DK 1 COL 27

Employee Code (New Agency Identification Number)  
-----

1. 1 Employee
2. 2-4 Employees
3. 5-9 Employees
4. 10-24 Employees
5. 25-49 Employees
6. 50-99 Employees
7. 100-199 Employees
8. 200-299 Employees
9. 300+ Employees

0. Inap., no new agency employee code

VAR 0015 NEW AGCY RESIDENT CODE MD=0  
REF 0015 LOC 26 WIDTH 1 DK 1 COL 28

Resident Code (New Agency Identification Number)  
-----

1. 1-9 Residents
2. 10-24 Residents
3. 25-49 Residents
4. 50-74 Residents
5. 75-99 Residents

(CONTINUED)

6. 100-199 Residents
7. 200 + Residents

0. Inap., no new agency resident code

.....

VAR 0016      TYPE OF OLD AGENCY      MD=0  
REF 0016      LOC    27 WIDTH    1      DK    1 COL 29

Old Agency Identification Code (Old Agency Identification Number)

-----

5. Juvenile Detention or Correctional Facility

.....

VAR 0017      TYPE OF OLD FACILITY      MD=0  
REF 0017      LOC    28 WIDTH    1      DK    1 COL 30

Type of Juvenile Facility (Old Agency Identification Number)

-----

1. Detention Center
  2. Shelter
  3. Juvenile Reception or Diagnostic Center
  4. Training School
  5. Ranch, Forestry or Farm
  6. Halfway House
  7. Group Home
  9. Other
- .....

VAR 0018      OLD UNIQUE NUMBER      MD=-1  
REF 0018      LOC    29 WIDTH    2      DK    1 COL 31-32

Unique Number for Old Agency Identification (Old Agency Identification Number)

-----

Identification number to uniquely identify a facility of a given type, within a unit of government

VAR 0019      OLD AGENCY SEX      MD=0  
REF 0019      LOC    31 WIDTH    1      DK    1 COL 33

Q.II C(2). Does This Facility Hold (Old Agency Identification Number) -

-----

1. Males only
  2. Females only
  3. Both Males and Females
  4. Unknown
- .....

VAR 0020      OLD AGCY EMPLOY CODE      MD=0  
REF 0020      LOC    32 WIDTH    1      DK    1 COL 34

Employee Code (Old Agency Identification Number)

-----

1. 1 Employee
2. 2-4 Employees
3. 5-9 Employees
4. 10-24 Employees
5. 25-49 Employees
6. 50-99 Employees
7. 100-199 Employees
8. 200-299 Employees
9. 300+ Employees

0. Inap., no old agency employee code

.....

VAR 0021      OLD AGCY RESIDENT CODE      MD=0  
REF 0021      LOC    33 WIDTH    1      DK    1 COL 35

Resident Code (Old Agency Identification Number)

-----

1. 1-9 Residents
2. 10-24 Residents
3. 25-49 Residents
4. 50-74 Residents
5. 75-99 Residents

(CONTINUED)

- 6. 100-199 Residents
- 7. 200+ Residents

0. Inap., no old agency resident code

.....

VAR 0022	ANNUAL REPORT BEGIN MNTH	MD=99
REF 0022	LOC 34 WIDTH 2	DK 1 COL 36-37

Month Beginning Annual Period

<Data were reported on a fiscal year basis from July 1, 1973 through June 30, 1974 if possible>

- 01. January
- .
- .
- 12. December

.....

VAR 0023	ANNUAL REPORT BEGIN DAY	MD=99
REF 0023	LOC 36 WIDTH 2	DK 1 COL 38-39

Day Beginning Annual Period

<Data were reported on a fiscal year basis from July 1, 1973 through June 30, 1974 if possible>

- 01. The first
- .
- .
- 31. The thirty-first

VAR 0024	ANNUAL REPORT BEGIN YR	MD=99
REF 0024	LOC 38 WIDTH 2	DK 1 COL 40-41

Year Beginning Annual Period

<Data were reported on a fiscal year basis from July 1, 1973 through June 30, 1974 if possible>

- 72. 1972
- 73. 1973
- 74. 1974

.....

VAR 0025	ANNUAL REPORT END MONTH	MD=99
REF 0025	LOC 40 WIDTH 2	DK 1 COL 42-43

Month Ending Annual Period

<Data were reported on a fiscal year basis from July 1, 1973 through June 30, 1974 if possible>

- 01. January
- .
- .
- 12. December

.....

VAR 0026	ANNUAL REPORT END DAY	MD=99
REF 0026	LOC 42 WIDTH 2	DK 1 COL 44-45

Day of Ending Annual Period

<Data were reported on a fiscal year basis from July 1, 1973 through June 30, 1974 if possible>

- 01. The first
- .
- .
- .

(CONTINUED)

## 31. The thirty-first

.....

VAR 0027      ANNUAL REPORT END YEAR      MD=99  
 REF 0027      LOC    44 WIDTH    2      DK    1 COL 46-47

## Year Ending Annual Period

-----

<Data were reported on a fiscal year basis from July 1, 1973  
 through June 30, 1974 if possible>

73. 1973  
 74. 1974

.....

VAR 0028      TYPE OF FACILITY      MD=9  
 REF 0028      LOC    46 WIDTH    1      DK    1 COL 48

## Q.II A. Is this facility primarily a --

- 
1. Detention Center - Provides temporary care in a PHYSICALLY RESTRICTING environment for juveniles in custody pending court disposition, and often for juveniles who are adjudicated delinquent or are awaiting return to another jurisdiction.
  2. Shelter - Provides temporary care similar to that of a detention center but in a PHYSICALLY UNRESTRICTING environment
  3. Reception or Diagnostic Center - Screens juvenile court commitments and assigns them to appropriate treatment facilities
  4. Training School - A specialized institution serving delinquent juveniles committed directly to it by juvenile court or placed in it by an agency having such authority
  5. Ranch, Forestry Camp, Farm - Residential treatment facility for juvenile whose behavior does not necessitate the strict confinement of a training school, often allowing them greater contact with the community.
  6. Halfway House - Facility where juveniles are placed while on probation or aftercare/parole, allowing

(CONTINUED)

them extensive contact with the community, such as through jobs and schools.

7. Group Homes - Facility where juveniles are allowed extensive contact with the community, such as jobs and schools, but are not placed there while on probation or aftercare/parole
8. Non-residential Community Program - Children live at home but are required to attend daily sessions at the facility that usually include educational and counselling services
9. Other

.....

VAR 0029      ADMINISTRATION OF FACILITY      MD=9  
 REF 0029      LOC    47 WIDTH    1      DK    1 COL 49

## Q.II B. Is this Facility Administered By --

- 
1. State
  2. County
  3. City
  4. Multi-Governmental
  5. Private

.....

VAR 0030      SEX OF POPULATION      MD=9  
 REF 0030      LOC    48 WIDTH    1      DK    1 COL 50

## Q.II C. Does This Facility Hold --

- 
1. Males only
  2. Females only
  3. Both males and females
  4. Unknown

VAR 0031 TOTAL MALES INTO INST. MD=-1  
REF 0031 LOC 49 WIDTH 6 DK 1 COL 51-56

-- IF CODED 4 OR 5 IN Q.II A.--  
Q.III A (1). What was the total movement of MALES into  
institution during the annual period covered by this report?

000000. None

999999. 999,999

-00001. Inap.

VAR 0032 TOTAL FEMALES INTO INST MD=-1  
REF 0032 LOC 55 WIDTH 6 DK 1 COL 57-62

-- IF CODED 4 OR 5 IN Q.II A.--  
Q.III A (2). What was the total movement of FEMALES into  
institution during the annual period covered by this report?

000000. None

999999. 999,999

-00001. Inap.

VAR 0033 # 1ST COURT COMMITMENT-M MD=-1  
REF 0033 LOC 61 WIDTH 6 DK 1 COL 63-68

-- IF CODED 4 OR 5 IN Q.II A.--  
Q.III A (1a). The total number of MALES committed by court:  
First commitments (Where applicable, include first  
placements received through reception and diagnostic  
centers.)

(CONTINUED)

000000. None

999999. 999,999

-00001. Inap.

VAR 0034 # 1ST COURT COMMIT FEMLE MD=-1  
REF 0034 LOC 67 WIDTH 6 DK 1 COL 69-74

-- IF CODED 4 OR 5 IN Q.II A.--  
Q.III A (1b). The total number of FEMALES committed by court:  
First commitments (Where applicable, include first  
placements received through reception and diagnostic  
centers.)

000000. None

999999. 999,999

-00001. Inap.

VAR 0035 # RECOMMIT BY COURT-MALE MD=-1  
REF 0035 LOC 73 WIDTH 6 DK 1 COL 75-80

-- IF CODED 4 OR 5 IN Q.II A.--  
Q.III A (2a). The total number of MALES committed by court:  
Recommitments (new offense). (Include juveniles under  
aftercare/parole who commit a new offense and are  
recommitted.)

000000. None

999999. 999,999

(CONTINUED)

-00001. Inap.

.....

VAR 0004	SEQUENTIAL ID NUMBER	NO MISSING DATA CODES
REF 0004	LOC 7 WIDTH 3	DK 2 COL 1-3

Case Identification Number

-----

The ICPSR has attached a sequential case identification number to every record. This number uniquely identifies each record in this survey.

'02' DECK NUMBER DK 2 COL 4-5

-----

.....

VAR 0036	# RECOMMIT BY COURT-FMLE	MD=-1
REF 0036	LOC 79 WIDTH 6	DK 2 COL 6-11

-- IF CODED 4 OR 5 IN Q.II A.--  
 Q.III A(2b). Total number of FEMALES committed by court:  
 Rec commitments (new offense). (Include juveniles under  
 aftercare/parole who commit a new offense and are  
 recommit ted.)

-----

000000. None

999999. 999,999

-00001. Inap.

.....

VAR 0037	# RETURNED FROM PAROLE-M	MD=-1
REF 0037	LOC 85 WIDTH 6	DK 2 COL 12-17

-- IF CODED 4 OR 5 IN Q.II A.--  
 Q.III A(3a). Total number of MALES returned from

(CONTINUED)

aftercare/parole (except for new offense)

-----

000000. None

999999. 999,999

-00001. Inap.

.....

VAR 0038	# RETURNED FROM PAROLE-F	MD=-1
REF 0038	LOC 91 WIDTH 6	DK 2 COL 18-23

--IF CODED 4 OR 5 IN Q.II A(2).--  
 Q.III A(3b). Total number of FEMALES returned from  
 aftercare/parole (Except for new offense)

-----

000000. None

999999. 999,999

-00001. Inap.

.....

VAR 0039	# TRANSFERRED IN-MALE	MD=-1
REF 0039	LOC 97 WIDTH 6	DK 2 COL 24-29

--IF CODED 4 OR 5 IN Q.II A.--  
 Q.III A(4a). Total number of MALES transferred in from  
 another facility for delinquent juveniles (include transfers  
 in from another facility even though processed through  
 reception and diagnostic centers.)

-----

000000. None

999999. 999,999

(CONTINUED)

-00001. Inap.

.....

VAR 0040 # TRANSFERRED IN-FEMALE MD=-1  
REF 0040 LOC 103 WIDTH 6 DK 2 COL 30-35

--IF CODED 4 OR 5 IN Q.II A.--  
Q.III A(4b). Total number of FEMALES transferred in from  
another facility for delinquent juveniles (include transfers  
in from another facility even though processed through  
reception and diagnostic centers.)

000000. None

999999. 999,999

-00001. Inap.

.....

VAR 0041 # OTHER ADMISSIONS-MALE MD=-1  
REF 0041 LOC 109 WIDTH 6 DK 2 COL 36-41

--IF CODED 4 OR 5 IN Q.II A.--  
Q.III A(5a). Total number of other MALE admissions

000000. None

999999. 999,999

-00001. Inap.

VAR 0042 # OTHER ADMISSIONS-FEMLE MD=-1  
REF 0042 LOC 115 WIDTH 6 DK 2 COL 42-47

--IF CODED 4 OR 5 IN Q.II A.--  
Q.III A(5b). Total number of other FEMALE admissions

000000. None

999999. 999,999

-00001. Inap.

.....

VAR 0043 TOTAL MOVEMENT OUT-MALE MD=-1  
REF 0043 LOC 121 WIDTH 6 DK 2 COL 48-53

--IF CODED 4 OR 5 IN Q.II A.--  
Q.III B(1). Total movement of MALES out of institution  
during the annual period covered by this report

000000. None

999999. 999,999

-00001. Inap.

.....

VAR 0044 TOTAL MOVEMENT OUT-FEMLE MD=-1  
REF 0044 LOC 127 WIDTH 6 DK 2 COL 54-59

--IF CODED 4 OR 5 IN Q.II A.--  
Q.III B(2). Total movement of FEMALES out of institution  
during the annual period covered by this report

000000. None

(CONTINUED)

999999. 999,999

-00001. Inap.

VAR 0045 # DISCHARGED-MALE MD=-1  
REF 0045 LOC 133 WIDTH 6 DK 2 COL 60-65

--IF CODED 4 OR 5 IN Q.II A.--  
Q.III B (1a). Total number of MALES discharged with no  
further agency supervision (Include those juveniles where  
approval for discharge is required by court.)

000000. None

999999. 999,999

-00001. Inap.

```
VAR 0046      # DISCHARGED-FEMALE                      MD=-1
REF 0046      LOC 139 WIDTH 6                          DK 2 COL 66-71
```

Q.III B (1b). Total number of FEMALES discharged with no further agency supervision (Include those juveniles where approval for discharge is required by court.)

000000. None

999999. 999,999

-00001. Inap.

```
VAR 0047      # IN INST PAROLE-MALE      MD=-1
REF 0047      LOC 145 WIDTH 6             DK 2 COL 72-77
```

--IF CODED 4 OR 5 IN Q.II A.--  
Q.III B(2a). Total number of MALES placed in  
aftercare/parole program operated by the institution

000000. None

999999. 999,999

-00001. Inap.

```
VAR 0004      SEQUENTIAL ID NUMBER      NO MISSING DATA CODES
REF 0004      LOC      7 WIDTH  3      DK      3 COL  1- 3
```

Case Identification Number

The ICPSR has attached a sequential case identification number to every record. This number uniquely identifies each record in this survey.

'03' DECK NUMBER DK 3 COL 4-5

```
VAR 0048      # IN INST PAROLE-FEMALE      MD=-1
REF 0048      LOC 151 WIDTH 6              DK 3 COL 6-11
```

--IF CODED 4 OR 5 IN Q.II A.--  
Q.III B (2b). Total number of FEMALES placed in  
aftercare/parole program operated by the institution

000000. None

999999. 999,999

(CONTINUED)

-00001. Inap.

.....

VAR 0049 # IN OTHER PAROLE-MALE MD=-1  
REF 0049 LOC 157 WIDTH 6 DK 3 COL 12-17

--IF CODED 4 OR 5 IN Q.II A.--  
Q.III B(3a). Total number of MALES placed in  
aftercare/parole program operated by agency other than  
institution

-----

000000. None

999999. 999,999

-00001. Inap.

.....

VAR 0050 # IN OTHER PAROLE-FEMALE MD=-1  
REF 0050 LOC 163 WIDTH 6 DK 3 COL 18-23

--IF CODED 4 OR 5 IN Q.II A.--  
Q.III B(3b). Total number of FEMALES placed in  
aftercare/parole program operated by agency other than  
institution

-----

000000. None

999999. 999,999

-00001. Inap.

VAR 0051 # TRANS OTHER INST-MALE MD=-1  
REF 0051 LOC 169 WIDTH 6 DK 3 COL 24-29

--IF CODED 4 OR 5 IN Q.II A.--  
Q.III B(4a). MALES transferred out to another institution  
for delinquent juveniles (Where applicable include transfers  
out to reception and diagnostic centers and from reception  
and diagnostic sections of training schools to other  
treatment facilities.)

-----

000000. None

999999. 999,999

-00001. Inap.

.....

VAR 0052 # TRANS OTHER INST-FEMALE MD=-1  
REF 0052 LOC 175 WIDTH 6 DK 3 COL 30-35

--IF CODED 4 OR 5 IN Q.II A.--  
Q.III B(4b). FEMALES transferred out to another institution  
for delinquent juveniles (Where applicable include transfers  
out to reception and diagnostic centers and from reception  
and diagnostic sections of training schools to other  
treatment facilities.)

-----

000000. None

999999. 999,999

-00001. Inap.

VAR 0053 # OTHER RELEASES-MALE MD=-1  
REF 0053 LOC 181 WIDTH 6 DK 3 COL 36-41

--IF CODED 4 OR 5 IN Q.II A.--  
Q.III B(5a). Total number of other MALE releases

000000. None  
.  
.  
999999. 999,999  
-00001. Inap.

VAR 0054 # OTHER RELEASES-FEMALE MD=-1  
REF 0054 LOC 187 WIDTH 6 DK 3 COL 42-47

--IF CODED 4 OR 5 IN Q.II A.--  
Q.III B(5b). Total number of other FEMALE releases

000000. None  
.  
.  
999999. 999,999  
-00001. Inap.

VAR 0055 ADMITTED TO CUSTODY-MALE MD=-1  
REF 0055 LOC 193 WIDTH 6 DK 3 COL 48-53

--IF CODED 1, 2, 3, 6 OR 7 IN Q.II A.--  
Q.III C(1a). Movement of institutional population during the  
annual period covered by this report - MALES admitted to  
custody

000000. None

(CONTINUED)

999999. 999,999  
-00001. Inap.

VAR 0056 ADMITTED TO CUSTODY-FEMLE MD=-1  
REF 0056 LOC 199 WIDTH 6 DK 3 COL 54-59

--IF CODED 1, 2, 3, 6 OR 7 IN Q.II A.--  
Q.III C(1b). Movement of institutional population during the  
annual period covered by this report - FEMALES admitted to  
custody

000000. None  
.  
.  
999999. 999,999  
-00001. Inap.

VAR 0057 # DISCHARGED-MALE MD=-1  
REF 0057 LOC 205 WIDTH 6 DK 3 COL 60-65

--IF CODED 1, 2, 3, 6 OR 7 IN Q.II A(1).--  
Q.III C(2a). Movement of institutional population during the  
annual period covered by this report - MALES discharged or  
transferred out of facility

000000. None  
.  
.  
999999. 999,999  
-00001. Inap.

VAR 0058      # DISCHARGED-FEMALE      MD=-1  
REF 0058      LOC 211 WIDTH 6      DK 3 COL 66-71

--IF CODED 1, 2, 3, 6 OR 7 IN Q.II A(2).--  
Q.III C(2b). Movement of institutional population during the  
annual period covered by this report - FEMALES discharged or  
transferred out of facility

000000. None  
:  
:  
:  
999999. 999,999  
-00001. Inap.

VAR 0059      TOTAL # MALES 6-30-74      MD=-1  
REF 0059      LOC 217 WIDTH 6      DK 3 COL 72-77

Q.III D(2a). Total MALE population in the facility on June  
30, 1974

<Estimates were coded when exact counts were not available.  
For those types of juveniles never held, -1 was coded. For  
those types of juveniles sometimes held but not in residence  
on that particular date, 0 was coded>

000000. None  
:  
:  
:  
999999. 999,999  
-00001. Inap.

VAR 0004      SEQUENTIAL ID NUMBER      NO MISSING DATA CODES  
REF 0004      LOC 7 WIDTH 3      DK 4 COL 1- 3

Case Identification Number

(CONTINUED)

The ICPSR has attached a sequential case identification  
number to every record. This number uniquely identifies  
each record in this survey.

'04' DECK NUMBER      DK 4 COL 4- 5

VAR 0060      TOTAL # FEMALES 6-30-74      MD=-1  
REF 0060      LOC 223 WIDTH 6      DK 4 COL 6-11

Q.III D(2b). Total FEMALE population in the facility on June  
30, 1974

<Estimates were coded when exact counts were not available.  
For those types of juveniles never held, -1 was coded. For  
those types of juveniles sometimes held but not in residence  
on that particular date, 0 was coded>

000000. None  
:  
:  
:  
999999. 999,999  
-00001. Inap.

VAR 0061      # MALES ADJUD DELQT 6-74      MD=-1  
REF 0061      LOC 229 WIDTH 6      DK 4 COL 12-17

Q.III D(3a). Number of MALE adjudicated delinquents on June  
30, 1974 - Juveniles who have been adjudicated delinquent  
whether they have been committed to the facility or are  
awaiting placement in the facility

<Estimates were coded when exact counts were not available.  
For those types of juveniles never held, -1 was coded. For  
those types of juveniles sometimes held but not in residence  
on that particular date, 0 was coded>

000000. None

(CONTINUED)

999999. 999,999

-00001. Inap.

VAR 0062 # FEMLS ADJUD DELQT 6-74 MD=-1  
 REF 0062 LOC 235 WIDTH 6 DK 4 COL 18-23

Q.III D(3b). Number of FEMALE adjudicated delinquents on  
 June 30, 1974

<See Q.IIID(3a) for complete question text>

<Estimates were coded when exact counts were not available.  
 For those types of juveniles never held, -1 was coded. For  
 those types of juveniles sometimes held but not in residence  
 on that particular date, 0 was coded>

000000. None

999999. 999,999

-00001. Inap.

VAR 0063 # MALE STATUS OFFND 6-74 MD=-1  
 REF 0063 LOC 241 WIDTH 6 DK 4 COL 24-29

Q.III D(4a). Number of MALE status offenders on June 30,  
 1974 - Juveniles who under special statutes for juvenile  
 "status offenders" have been declared in need of supervision  
 (such as PINS, CHINS, etc.) whether they have been committed  
 to the facility or are awaiting placement in another  
 facility. (In California all juveniles adjudicated under  
 statute "601") - on June 30, 1974

000000. None

(CONTINUED)

999999. 999,999

-00001. Inap.

VAR 0064 # FEML STATUS OFFND 6-74 MD=-1  
 REF 0064 LOC 247 WIDTH 6 DK 4 COL 30-35

Q.III D(4b). Number of FEMALE status offenders on June 30,  
 1974

<See Q.IIID(4a) for complete question text>

<Estimates were coded when exact counts were not available.  
 For those types of juveniles never held, -1 was coded. For  
 those types of juveniles sometimes held but not in residence  
 on that particular date, 0 was coded>

000000. None

999999. 999,999

-00001. Inap.

VAR 0065 # MALE PEND DISPOSN 6-74 MD=-1  
 REF 0065 LOC 253 WIDTH 6 DK 4 COL 36-41

Q.III D(5a). Number of MALES held pending disposition by  
 court on June 30, 1974 - Juveniles held for delinquency, who  
 have not had any hearing or who have had only a preliminary,  
 screening, detention or similar hearing. Also includes  
 juveniles who have had an adjudication hearing but are  
 waiting for a disposition hearing

<Estimates were coded when exact counts were not available.  
 For those types of juveniles never held, -1 was coded. For

(CONTINUED)

those types of juveniles sometimes held but not in residence  
on that particular date, 0 was coded>

000000. None

999999. 999,999

-00001. Inap.

VAR 0066 # FEML PEND DISPOSN 6-74 MD=-1  
REF 0066 LOC 259 WIDTH 6 DK 4 COL 42-47

Q.III D(5b). Number of FEMALES held pending disposition  
court on June 30, 1974

<See Q.III D(5a) for complete question text>

<Estimates were coded when exact counts were not available.  
For those types of juveniles never held, -1 was coded. For  
those types of juveniles sometimes held but not in residence  
on that particular date, 0 was coded>

000000. None

999999. 999,999

-00001. Inap.

VAR 0067 # MALE WAIT TRANSFR 6-74 MD=-1  
REF 0067 LOC 265 WIDTH 6 DK 4 COL 48-53

Q.III D(6a). Number of MALES awaiting transfer to another  
jurisdiction on June 30, 1974 - Juveniles who have allegedly  
committed a crime in, or have run away from, another  
jurisdiction's area including runaways from correction  
facilities. Juveniles adjudicated delinquent and awaiting  
placement in a correction facility should not be included,

(CONTINUED)

but should be placed under "Adjudicated Delinquent" - on  
June 30, 1974

000000. None

999999. 999,999

-00001. Inap.

VAR 0068 # FEML WAIT TRANSFR 6-74 MD=-1  
REF 0068 LOC 271 WIDTH 6 DK 4 COL 54-59

Q.III D(6b). Number of FEMALES awaiting transfer to another  
jurisdiction on June 30, 1974

<See Q.III D(6a) for complete question text>

(Estimates were coded when exact counts were not available.  
For those types of juveniles never held, -1 was coded. For  
those types of juveniles sometimes held but not in residence  
on that particular date, 0 was coded>

000000. None

999999. 999,999

-00001. Inap.

VAR 0069 # MALE VOL COMMITMT 6-74 MD=-1  
REF 0069 LOC 277 WIDTH 6 DK 4 COL 60-65

Q.III D(7a). Number of MALE voluntary commitments on June  
30, 1974 - Juveniles who committed themselves or were  
referred to the facility for treatment by parent, court,  
school, social agency, etc., without being adjudged  
delinquent or declared in need of supervision by a court

(CONTINUED)

<Estimates were coded when exact counts were not available. For those types of juveniles never held, -1 was coded. For those types of juveniles sometimes held but not in residence on that particular date, 0 was coded>

000000. None  
.  
.  
999999. 999,999  
-00001. Inap.

VAR 0070 # FEML VOL COMMITMT 6-74 MD=-1  
REF 0070 LOC 283 WIDTH 6 DK 4 COL 66-71

Q.III D(7b). Number of FEMALE voluntary commitments on June 30, 1974

<See Q.III D(7a) for complete question text>

<Estimates were coded when exact counts were not available. For those types of juveniles never held, -1 was coded. For those types of juveniles sometimes held but not in residence on that particular date, 0 was coded>

000000. None  
.  
.  
999999. 999,999  
-00001. Inap.

VAR 0071 # MALE DEPND/NEGLCT 6-74 MD=-1  
REF 0071 LOC 289 WIDTH 6 DK 4 COL 72-77

Q.III D(8a). Number of dependent or neglected MALES on June 30, 1974 - Should not include any juveniles held on delinquency charges, adjudicated delinquent, or declared in

(CONTINUED)

need of supervision, even if they may also be considered dependent and neglected

000000. None  
.  
.  
999999. 999,999  
-00001. Inap.

VAR 0004 SEQUENTIAL ID NUMBER NO MISSING DATA CODES  
REF 0004 LOC 7 WIDTH 3 DK 5 COL 1-3

Case Identification Number

The ICPSR has attached a sequential case identification number to every record. This number uniquely identifies each record in this survey.

'05' DECK NUMBER DK 5 COL 4-5

VAR 0072 # FEML DEPND/NEGLCT 6-74 MD=-1  
REF 0072 LOC 295 WIDTH 6 DK 5 COL 6-11

Q.III D(8b). Number of dependent or neglected FEMALES on June 30, 1974

<See Q.III D(8a) for complete question text>

<Estimates were coded when exact counts were not available. For those types of juveniles never held, -1 was coded. For those types of juveniles sometimes held but not in residence on that particular date, 0 was coded>

000000. None  
.  
.

(CONTINUED)

999999. 999,999

-00001. Inap.

.....

VAR 0073	AV DAILY POPULATION-MALE	MD=-1
REF 0073	LOC 301 WIDTH 6	DK 5 COL 12-17

Q.III E(1). What was the average daily MALE population in the facility during the annual period covered by this report?

-----

000000. None

999999. 999,999

.....

VAR 0074	AV DAILY POPULATION-FEMLE	MD=-1
REF 0074	LOC 307 WIDTH 6	DK 5 COL 18-23

Q.III E(2). What was the average daily FEMALE population for the annual period covered in this report?

-----

000000. None

999999. 999,999

-00001. Inap.

.....

VAR 0075	# ADJUD DELINQUENT-MALE	MD=-1
REF 0075	LOC 313 WIDTH 6	DK 5 COL 24-29

Q.III F(1). Total number of MALE adjudicated delinquents

-----

(CONTINUED)

<If exact offense data were not available, estimates were coded>

000000. None

999999. 999,999

-00001. Inap.

.....

VAR 0076	# ADJUD DELINQUENT-FEMLE	MD=-1
REF 0076	LOC 319 WIDTH 6	DK 5 COL 30-35

Q.III F(2). Total number of FEMALE adjudicated delinquents

-----

<If exact offense data were not available, estimates were coded>

000000. None

999999. 999,999

-00001. Inap.

.....

VAR 0077	# NEED SUPERVISION-MALE	MD=-1
REF 0077	LOC 325 WIDTH 6	DK 5 COL 36-41

Q.III F(3). Total number of MALE status offenders (CHINS)

-----

<If exact offense data were not available, estimates were coded>

000000. None

(CONTINUED)

999999. 999,999

-00001. Inap.

.....

VAR 0078      # NEED SUPERVISION-FEMLE      MD=-1  
REF 0078      LOC 331 WIDTH 6      DK 5 COL 42-47

Q.III F(4). Total number of FEMALE status offenders (CHINS)

-----

<If exact offense data were not available, estimates were coded>

000000. None

999999. 999,999

-00001. Inap.

.....

VAR 0079      ADJUD DELQ-FELONY-MALE      MD=-1  
REF 0079      LOC 337 WIDTH 6      DK 5 COL 48-53

Q.III F(1a). Number of MALES adjudicated for felonies on June 30, 1974 - Number of juveniles held on charges that would be felonies if committed by adults, except drug offenses

-----

000000. None

999999. 999,999

-00001. Inap.

VAR 0080      ADJUD DELQ-FELONY-FEMALE      MD=-1  
REF 0080      LOC 343 WIDTH 6      DK 5 COL 54-59

Q.III F(2a). Number of FEMALES adjudicated for felonies on June 30, 1974

-----

<See Q.III F(1a) for complete question text>

000000. None

999999. 999,999

-00001. Inap.

.....

VAR 0081      NEED SUPRV-FELONY-MALE      MD=-1  
REF 0081      LOC 349 WIDTH 6      DK 5 COL 60-65

Q.III F(3a). Number of MALE status offenders - felonies on June 30, 1974

-----

<See Q.III F(1a) for complete question text>

000000. None

999999. 999,999

-00001. Inap.

.....

VAR 0082      NEED SUPRV-FELONY-FEMALE      MD=-1  
REF 0082      LOC 355 WIDTH 6      DK 5 COL 66-71

Q.III F(4a). Number of FEMALE status offenders - felonies on June 30, 1974

-----

(CONTINUED)

&lt;See Q.III F(1a) for complete question text&gt;

000000. None

999999. 999,999

-00001. Inap.

.....

VAR 0083	ADJUD DELQ-MISDEMNR-MALE	MD=-1
REF 0083	LOC 361 WIDTH 6	DK 5 COL 72-77

Q.III F(1b). Number of MALES adjudicated for misdemeanors on June 30, 1974 - Number of juveniles held on charges that would be misdemeanors if committed by adults, except drug offenses

-----

000000. None

999999. 999,999

-00001. Inap.

.....

VAR 0004	SEQUENTIAL ID NUMBER	NO MISSING DATA CODES
REF 0004	LOC 7 WIDTH 3	DK 6 COL 1- 3

Case Identification Number

-----

The ICPSR has attached a sequential case identification number to every record. This number uniquely identifies each record in this survey.

'06' DECK NUMBER

-----

DK 6 COL 4- 5

VAR 0084	ADJUD DELQ-MISDEMNR-FMLE	MD=-1
REF 0084	LOC 367 WIDTH 6	DK 6 COL 6-11

Q.III F(2b). Number of FEMALES adjudicated for misdemeanors on June 30, 1974

-----

&lt;See Q.III F(1b) for complete question text&gt;

000000. None

999999. 999,999

-00001. Inap.

.....

VAR 0085	NEED SUPRV-MISDEMNR-MALE	MD=-1
REF 0085	LOC 373 WIDTH 6	DK 6 COL 12-17

Q.III F(3b). Number of MALE status offenders - misdemeanors on June 30, 1974

-----

&lt;See Q.III F(1b) for complete question text&gt;

000000. None

999999. 999,999

-00001. Inap.

.....

VAR 0086	NEED SUPRV-MISDEMNR-FMLE	MD=-1
REF 0086	LOC 379 WIDTH 6	DK 6 COL 18-23

Q.III F(4b). Number of FEMALE status offenders - misdemeanors on June 30, 1974

-----

(CONTINUED)

&lt;See Q.III F(1b) for complete question text&gt;

000000. None

999999. 999,999

-00001. Inap.

.....

VAR 0087	ADJUD DELNQUANT-DRUG-MALE	MD=-1
REF 0087	LOC 385 WIDTH 6	DK 6 COL 24-29

Q.III F(1c). Number of MALES adjudicated for drug offenses  
on June 30, 1974

-----

000000. None

999999. 999,999

-00001. Inap.

.....

VAR 0088	ADJUD DELNQUANT-DRUG-FMLE	MD=-1
REF 0088	LOC 391 WIDTH 6	DK 6 COL 30-35

Q.III F(2c). Number of FEMALES adjudicated for drug offenses  
on June 30, 1974

-----

000000. None

999999. 999,999

-00001. Inap.

VAR 0089	NEED SUPERVISN-DRUG-MALE	MD=-1
REF 0089	LOC 397 WIDTH 6	DK 6 COL 36-41

Q.III F(3c). Number of MALE status offenders - drug offenses  
on June 30, 1974

-----

000000. None

999999. 999,999

-00001. Inap.

.....

VAR 0090	NEED SUPERVISN-DRUG-FMLE	MD=-1
REF 0090	LOC 403 WIDTH 6	DK 6 COL 42-47

Q.III F(4c). Number of FEMALE status offenders - drug  
offenses on June 30, 1974

-----

000000. None

999999. 999,999

-00001. Inap.

.....

VAR 0091	ADJUD DELQ-JUVENILE-MALE	MD=-1
REF 0091	LOC 409 WIDTH 6	DK 6 COL 48-53

Q.III F(1d). Number of MALES adjudicated for juvenile  
offenses on June 30, 1974 - Number of juveniles held on  
charges that would not be crimes if committed by adults

-----

000000. None

(CONTINUED)

999999. 999,999

-00001. Inap.

VAR 0092 ADJUD DELQ-JUVENILE-FMLE MD=-1  
 REF 0092 LOC 415 WIDTH 6 DK 6 COL 54-59

Q.III F(2d). Number of FEMALES adjudicated for juvenile  
 offenses on June 30, 1974

<See Q.III F(1d) for complete question text>

000000. 000,000

999999. 999,999

-00001. Inap.

VAR 0093 NEED SUPRV-JUVENILE-MALE MD=-1  
 REF 0093 LOC 421 WIDTH 6 DK 6 COL 60-65

Q.III F(3d). Number of MALE status offenders - juvenile  
 offenses on June 30, 1974

<See Q.III F(1d) for complete question text>

000000. None

999999. 999,999

-00001. Inap.

VAR 0094 NEED SUPRV-JUVENILE-FMLE MD=-1  
 REF 0094 LOC 427 WIDTH 6 DK 6 COL 66-71

Q.III F(4d). Number of FEMALE status offenders - juvenile  
 offenses on June 30, 1974

<See Q.III F(1d) for complete question text>

000000. None

999999. 999,999

-00001. Inap.

VAR 0095 ADJUD DELQ-DK OFFENSE-ML MD=-1  
 REF 0095 LOC 433 WIDTH 6 DK 5 COL 72-77

Q.III F(1e). Number of adjudicated MALES for whom offense  
 data were not available on June 30, 1974

000000. None

999999. 999,999

-00001. Inap.

VAR 0004 SEQUENTIAL ID NUMBER NO MISSING DATA CODES  
 REF 0004 LOC 7 WIDTH 3 DK 7 COL 1- 3

### Case Identification Number

The ICPSR has attached a sequential case identification  
 number to every record. This number uniquely identifies  
 each record in this survey.

'07' DECK NUMBER

DK 7 COL 4-5

VAR 0096 ADJUD DELQ-DK OFFNSE-FML  
REF 0096 LOC 439 WIDTH 6

MD=-1  
DK 7 COL 6-11

Q.III F(2e). Number of adjudicated FEMALES for whom offense data were not available on June 30, 1974

000000. None

999999. 999,999

-00001. Inap.

VAR 0097 NEED SUPRV-DK OFFENSE-ML  
REF 0097 LOC 445 WIDTH 6

MD=-1  
DK 7 COL 12-17

Q.III F(3e). Number of MALE status offenders for whom offense data were not available on June 30, 1974

000000. None

999999. 999,999

-00001. Inap.

VAR 0098 NEED SUPRV-DK OFFENSE-FML  
REF 0098 LOC 451 WIDTH 6

MD=-1  
DK 7 COL 18-23

Q.III F(e). Number of FEMALE status offenders for whom offense data were not available on June 30, 1974.

000000. None

(CONTINUED)

999999. 999,999

-00001. Inap.

VAR 0099 FACILITY CAPACITY MALE MD=-1  
REF 0099 LOC 457 WIDTH 6 DK 7 COL 24-29

III G(1). How many MALES is your facility designed to hold, without overcrowding

<Examples of overcrowding would include double-decked bunks where facility was designed for single bunk, or temporary use of a room as sleeping quarters that would not ordinarily be used as such.>

000000. None

999999. 999,999

-00001. Inap.

VAR 0100 FACILITY CAPACITY FEMALE MD=-1  
REF 0100 LOC 463 WIDTH 6 DK 7 COL 30-35

Q.III 3(2). How many FEMALES is your facility designed to hold, without overcrowding?

<Examples of overcrowding would include double-decked bunks where facility was designed for single bunk, or temporary use of a room as sleeping quarters that would not ordinarily be used as such.>

000000. None

(CONTINUED)

999999. 999,999

-00001. Inap.

VAR 0101 AGE YOUNGEST MALE MD=-1  
 REF 0101 LOC 469 WIDTH 2 DK 7 COL 36-37

Q.IV A(1a). What is the age of the youngest MALE held at the facility on June 30, 1974?

00. Under one

99. 99 years old

-1. Inap.

VAR 0102 AGE YOUNGEST FEMALE MD=-1  
 REF 0102 LOC 471 WIDTH 2 DK 7 COL 38-39

Q.IV A(1b). What is the age of the youngest FEMALE held at the facility on June 30, 1974?

00. Under one

99. 99 years old

-1. Inap.

VAR 0103 AGE OLDEST MALE MD=-1  
 REF 0103 LOC 473 WIDTH 2 DK 7 COL 40-41

Q.IV A(2a). What is the age of the oldest MALE held at the facility on June 30, 1974?

00. Under one

99. 99 years old

-1. Inap.

VAR 0104 AGE OLDEST FEMALE MD=-1  
 REF 0104 LOC 475 WIDTH 2 DK 7 COL 42-43

Q.IV A(2b). What is the age of the oldest FEMALE held at the facility on June 30, 1974?

00. Under one

99. 99 years old

-1. Inap.

VAR 0105 AVERAGE AGE MALE MD=-1  
 REF 0105 LOC 477 WIDTH 2 DK 7 COL 44-45

Q.IV B(1). What was the average age of MALES held at the facility on June 30, 1974?

<When possible, the average age of juveniles held was computed by adding the ages of all male juveniles held at the facility on June 30, 1974, and dividing by the total number of male juveniles held on June 30, 1974; and by

(CONTINUED)

adding the ages of all female juveniles held at the facility on June 30, 1974, and dividing by the total number of female juveniles held on June 30, 1974>

00. Under one

99. 99 years old

-1. Inap.

VAR 0106 AVERAGE AGE FEMALE MD=-1  
REF 0106 LOC 479 WIDTH 2 DK 7 COL 46-47

Q.IV B(2). What was the average age of FEMALES held at the facility on June 30, 1974?

<When possible, the average age of juveniles held was computed by adding the ages of all male juveniles held at the facility on June 30, 1974, and dividing by the total number of male juveniles held on June 30, 1974; and by adding the ages of all female juveniles held at the facility on June 30, 1974, and dividing by the total number of female juveniles held on June 30, 1974>

00. Under one

99. 99 years old

-1. Inap.

VAR 0107 AVERAGE STAY-MONTHS MD=-1  
REF 0107 LOC 481 WIDTH 3 DK 7 COL 48-50

Q.V(1). What is the average length of stay for juveniles in your facility - months?

(CONTINUED)

<When possible, the average length of stay was computed by dividing the sum of lengths of stays for all juveniles released during the reporting period, by the total number of juveniles released during the same period>

000. None

999. 999

VAR 0108 AVERAGE STAY-DAYS MD=-1  
REF 0108 LOC 484 WIDTH 3 DK 7 COL 51-53

Q.V(2). What is the average length of stay for juveniles in your facility - days?

<When possible, the average length of stay was computed by dividing the sum of lengths of stays for all juveniles released during the reporting period, by the total number of juveniles released during the same period>

000. None

999. 999

VAR 0109 # FULLTIME PAYROLL EMPLOY MD=-1  
REF 0109 LOC 487 WIDTH 4 DK 7 COL 54-57

Q.VI(1). Total number of full-time payroll staff on June 30, 1974

0000. None

9999. 9,999

VAR 0110 # PARTTIME PAYROLL EMPLOY MD=-1  
REF 0110 LOC 491 WIDTH 4 DK 7 COL 58-61

Q.VI(2). Total number of part-time payroll staff on June 30, 1974

0000. None

9999. 9,999

VAR 0111 # FULLTIME NON-PAYR EMPLOY MD=-1  
REF 0111 LOC 495 WIDTH 4 DK 7 COL 62-65

Q.VI(3). Total number of full-time non-payroll staff on June 30, 1974

0000. None

9999. 9,999

VAR 0112 # PARTTIME NON-PAYR EMPLOY MD=-1  
REF 0112 LOC 499 WIDTH 4 DK 7 COL 66-69

Q.VI(4). Total number of part-time non-payroll staff on June 30, 1974

000. None

999. 999

VAR 0113 PAYROLL FULLTIME ADMIN MD=-1  
REF 0113 LOC 503 WIDTH 3 DK 7 COL 70-72

Q.VI(1a). Full-time administrative employees on June 30, 1974 - Include such positions as superintendent, director, administrator, assistant superintendent, business manager, stenographer, bookkeeper, switchboard operator, clerk and typist.

000. None

999. 999

VAR 0114 PAYROLL PARTTIME ADMIN MD=-1  
REF 0114 LOC 506 WIDTH 3 DK 7 COL 73-75

Q.VI(2a). Part-time administrative employees on June 30, 1974

<See Q.VI(1a) for complete question text>

000. None

999. 999

VAR 0115 NON-PAYR FULLTIME ADMIN MD=-1  
REF 0115 LOC 509 WIDTH 3 DK 7 COL 76-78

Q.VI(3a). Full-time non-payroll administrative employees on June 30, 1974

<See Q.VI(1a) for complete question text>

000. None

(CONTINUED)

999. 999

VAR 0004 SEQUENTIAL ID NUMBER NO MISSING DATA CODES  
REF 0004 LOC 7 WIDTH 3 DK 8 COL 1- 3

### Case Identification Number

The ICPSR has attached a sequential case identification number to every record. This number uniquely identifies each record in this survey.

'08' DECK NUMBER DK 8 COL 4- 5

VAR 0116 NON-PAYR PARTTIME ADMIN MD=-1  
REF 0116 LOC 512 WIDTH 3 DK 8 COL 6- 8

Q.VI(4a). Part-time non-payroll administrative employees on June 30, 1974

000. None

999. 999

VAR 0117 PAYROLL FULLTIME TREATMT MD=-1  
REF 0117 LOC 515 WIDTH 3 DK 8 COL 9-11

Q.VI(1b). Full-time treatment and educational employees on June 30, 1974 - Include positions such as psychiatrist, psychologist, chaplain, academic principal, director of vocational training, teacher, vocational teacher, social worker, librarian, aftercare/parole worker, recreation

(CONTINUED)

worker, physician, registered nurse, practical nurse, medical aide, classification officer and counsellor

000. None

999. 999

VAR 0118 PAYROLL PARTTIME TREATMT MD=-1  
REF 0118 LOC 518 WIDTH 3 DK 8 COL 12-14

Q.VI(2b). Part-time treatment and educational employees on June 30, 1974

<See Q.VI(1b) for complete question text>

000. None

999. 999

VAR 0119 NON-PAYR FULLTIME TREATMT MD=-1  
REF 0119 LOC 521 WIDTH 3 DK 8 COL 15-17

Q.VI(3b). Full-time non-payroll treatment and educational employees on June 30, 1974

<See Q.VI(1b) for complete question text>

000. None

999. 999

VAR 0120 NON-PAYR PARTIME TREATMT MD=-1  
REF 0120 LOC 524 WIDTH 3 DK 8 COL 18-20

Q.VI(4b). Part-time non-payroll treatment and educational employees on June 30, 1974

<See Q.VI(1b) for complete question text>

000. None

999. 999

VAR 0121 PAYROLL FULLTIME CUSTODL MD=-1  
REF 0121 LOC 527 WIDTH 3 DK 8 COL 21-23

Q.VI(1c). Full-time custodial employees on June 30, 1974 -  
Include positions such as house parent, group supervisor,  
group worker, cottage parent and matron

000. None

999. 999

VAR 0122 PAYROLL PARTTIME CUSTODL MD=-1  
REF 0122 LOC 530 WIDTH 3 DK 8 COL 24-26

Q.VI(2c). Part-time custodial employees on June 30, 1974

<See Q.VI(1c) for complete question text>

000. None

(CONTINUED)

999. 999

VAR 0123 NON-PAYR FULLTIME CUSTODL MD=-1  
REF 0123 LOC 533 WIDTH 3 DK 8 COL 27-29

Q.VI(3c). Full-time non-payroll custodial employees on June 30, 1974

<See Q.VI(1c) for complete question text>

000. None

999. 999

VAR 0124 NON-PAYR PARTIME CUSTODL MD=-1  
REF 0124 LOC 536 WIDTH 3 DK 8 COL 30-32

Q.VI(4c). Part-time non-payroll custodial employees on June 30, 1974

<See Q.VI(1c) for complete question text>

000. None

999. 999

VAR 0125 PAYROLL FULLTIME OTHER MD=-1  
REF 0125 LOC 539 WIDTH 3 DK 8 COL 33-35

Q.VI(1d). Full-time other employees on June 30, 1974 -  
Include positions such as housekeeping, maintenance and any  
other positions not included above

(CONTINUED)

000. None

999. 999

VAR 0126 PAYROLL PARTTIME OTHER MD=-1  
 REF 0126 LOC 542 WIDTH 3 DK 8 COL 36-38

Q.VI(2d). Part-time other employees on June 30, 1974

<See Q.VI(2d) for complete question text>

000. None

999. 999

VAR 0127 NON-PAYR FULLTIME OTHER MD=-1  
 REF 0127 LOC 545 WIDTH 3 DK 8 COL 39-41

Q.VI(3d). Full-time non-payroll other employees on June 30, 1974

<See Q.VI(2d) for complete question text>

000. None

999. 999

VAR 0128 NON-PAYR PARTTIME OTHER MD=-1  
 REF 0128 LOC 548 WIDTH 3 DK 8 COL 42-44

Q.VI(4d). Part-time non-payroll other employees on June 30, 1974

<See Q.VI(1d) for complete question text>

000. None

999. 999

VAR 0129 ANNUAL PERIOD BEGIN MNTH MD=0  
 REF 0129 LOC 551 WIDTH 2 DK 8 COL 45-46

Q.VII(1). Month annual period begins

<Data reported on a fiscal year basis from July 1, 1973 through June 30, 1974, if possible>

01. January

12. December

VAR 0130 ANNUAL PERIOD BEGIN YEAR MD=0  
 REF 0130 LOC 553 WIDTH 2 DK 8 COL 47-48

Q.VII(2). Year annual period begins

<Data reported on a fiscal year basis from July 1, 1973 through June 30, 1974, if possible>

72. 1972

73. 1973

(CONTINUED)

74. 1974

VAR 0131 ANNUAL PERIOD END MONTH MD=0  
 REF 0131 LOC 555 WIDTH 2 DK 8 COL 49-50

Q.VII(3). Month annual period ends

<Data reported on a fiscal year basis from July 1, 1973  
 through June 30, 1974, if possible>

01. January

12. December

VAR 0132 ANNUAL PERIOD END YEAR MD=0  
 REF 0132 LOC 557 WIDTH 2 DK 8 COL 51-52

Q.VII(4). Year annual period ends

<Data reported on a fiscal year basis from July 1, 1973  
 through June 30, 1974, if possible>

73. 1973

74. 1974

VAR 0133 TOTAL GROSS SALARY/WAGES MD=-1  
 REF 0133 LOC 559 WIDTH 7 DK 8 COL 53-59

Q.VIIIA(1). Current operating expenditures for gross salaries  
 and wages

<Employer contributions to employee benefits excluded here  
 and reported in Q.VIIIA(2)>

(CONTINUED)

0000000 No dollars

9999999 \$9,999,999

VAR 0134 TOTAL OTHER OPERAT EXPND MD=-1  
 REF 0134 LOC 566 WIDTH 7 DK 8 COL 60-66

Q.VIIIA(2). Current operating expenditures, such as the  
 purchase of food, supplies and contractual services

0000000 No dollars

9999999 \$9,999,999

VAR 0135 TOTAL CAPITAL EXPENDITUR MD=-1  
 REF 0135 LOC 573 WIDTH 8 DK 8 COL 67-74

Q.VIIB. Capital expenditures, including new buildings, major  
 repairs or improvements and new equipment

00000000 No dollars

99999999 \$99,999,999

VAR 0136 PORTION I.Q. RECORDS MD=9  
 REF 0136 LOC 581 WIDTH 1 DK 8 COL 75

Q.VIII. For what portion of juveniles does this facility  
 have I.Q. scores on record?

(CONTINUED)

1. All
2. Over half
3. Half or less
4. None

# GLOSSARY

**AVERAGE POPULATION** - In 1973, computed by summing the number of males and females held on September 30, 1972, December 31, 1972, March 31, 1973, and June 30, 1973, and averaging. In 1974, it was computed by summing the average daily population of males and the average daily population of females, as those averages were quoted by the facilities.

**CAPITAL EXPENDITURES** - Includes expenditures for new buildings, major repairs or improvements, and new equipment.

**DEPENDENT AND NEGLECTED** - Juveniles held as a result of the inability or unwillingness of their parents to care for them. Juveniles held on delinquency charges, adjudicated delinquents, or declared in need of supervision are NOT included here even if they may also be considered dependent and neglected. They are included in one of the other categories, as appropriate.

**DETENTION CENTER** - A facility that provides temporary care in a physically restricting environment for juveniles in custody pending court disposition and often for juveniles who have been adjudicated delinquent or are awaiting return to another jurisdiction.

**HALFWAY HOUSE AND GROUP HOME** - A facility where juveniles are allowed extensive contact with the community, such as through jobs and schools.

**JUVENILE** - A person charged with an offense, over whom the juvenile court has jurisdiction. The juvenile court's jurisdiction is determined by the age of the person who must, in most states, be under 18 years of age.

**JUVENILES ADJUDICATED DELINQUENT** - Juveniles who through formal judicial proceedings have been adjudged delinquent.

(CONTINUED)

**JUVENILES AWAITING TRANSFER TO ANOTHER JURISDICTION -** Juveniles who have allegedly committed a crime in, or have run away from another jurisdictional area, including runaways from correctional facilities. Juveniles adjudicated delinquent and awaiting placement in a correctional facility are included not here, but in the "juvenile adjudicated delinquent" category.

**JUVENILE DETENTION AND CORRECTIONAL FACILITY -** A building or part thereof, set of buildings or structures, operated for the custody and/or treatment of adjudicated and committed persons, or persons subject to juvenile or criminal justice proceedings. The six categories of facilities were detention centers; shelters; reception or diagnostic centers; training schools; ranches, forestry camps, and farms; and halfway houses and group homes.

**JUVENILES HELD PENDING DISPOSITION BY COURT -** Juveniles held for delinquency who have not had any hearing or who have had only a preliminary hearing or screening and who are awaiting further court action.

**JUVENILES IN NEED OF SUPERVISION -** Juveniles who have been declared in need of supervision by juvenile court (such as PINS, CHINS - person or child in need of supervision) under special statutes for juvenile status offenders. Not all states have such statutes.

**NON-PAYROLL STAFF -** Full-time and part-time staff not on the payroll of this facility. Include personnel of a parent agency or other public agency or service (including school system), who are assigned for some or all of their working time to this facility. Include community volunteers, college interns, and personnel paid under contractual agreements or federal grants.

**PAYROLL STAFF -** Full-time and part-time staff on the payroll of this facility.

**RANCH, FORESTRY CAMP, AND FARM -** A residential treatment facility for juveniles whose behavior does not necessitate the strict confinement of a training school, often allowing them greater contact with the community.

(CONTINUED)

**RECEPTION OR DIAGNOSTIC CENTER -** A facility that screens juvenile court commitments and assigns them to appropriate treatment facilities.

**SHELTER -** A facility that provides temporary care similar to that of a detention center, but in a physically unrestricting environment.

**STATUS OFFENSE -** An act or conduct that is declared by statute to be an offense, but only when committed or engaged in by a juvenile, and that can be adjudicated only by a juvenile court. Examples of status offenses are curfew violation, running away from home, truancy and incorrigibility.

**TRAINING SCHOOL -** A specialized institution serving delinquent juveniles committed directly to it by juvenile court or placed in it by an agency having such authority.

**OPERATING EXPENDITURES -** Includes salaries, wages, and other operating expenditures, such as the purchase of food, supplies, and contractual services.

**VOLUNTARY COMMITMENTS -** Juveniles who committed themselves or were referred to the facility for treatment by parent, court, school, social agency, etc., without being adjudged delinquent or declared in need of supervision by a court.

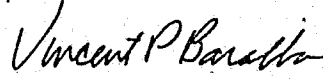
**YOUTHFUL OFFENDER -** A person, adjudicated in a criminal court, who may be above the statutory age limit for juveniles but is below a specified upper age limit, for whom special correctional commitments and special record-sealing procedures are made available by statute. The special correctional commitment may be to a juvenile facility, to a special section of an adult facility, or to a separate facility for the confinement of persons between the age limits specified in the particular statute.

## APPENDIX A

## QUESTIONNAIRE



## THIRD REQUEST

FORM CJ-17 (6-12-74)		Form Approved: O.M.B. No. 41-R-755	
U.S. DEPARTMENT OF COMMERCE SOCIAL AND ECONOMIC STATISTICS ADMINISTRATION BUREAU OF THE CENSUS ACTING AS COLLECTING AGENT FOR LAW ENFORCEMENT ASSISTANCE ADMINISTRATION U.S. DEPARTMENT OF JUSTICE		Name of agency reporting	
		Data supplied by	
		Name	
		Title	
1974 PUBLIC JUVENILE DETENTION AND CORRECTION FACILITIES SURVEY		Official address (Number and street, city, State, ZIP code)	
		Telephone	
PLEASE COMPLETE AND RETURN TO		Area code	Number
BUREAU OF THE CENSUS ATTN: Governments Division Washington, D.C. 20233		Extension	
Dear Friend:			
On behalf of the Law Enforcement Assistance Administration (LEAA), U.S. Department of Justice, the Bureau of the Census is conducting its annual survey of public juvenile detention and correction facilities.			
There is a continuing need for current information about these facilities to further assist LEAA in improving its program of assistance to those concerned with juvenile problems. Your cooperation in completing this year's questionnaire will be appreciated. The data are published annually in a report entitled <i>Children in Custody</i> . A copy of the report for the 1971 survey was mailed to you early this year, and you will also receive the report from the 1972-73 survey when it becomes available.			
If there are any items on this questionnaire for which the answer cannot be obtained from available records, reasonable estimates will be acceptable for purposes of this survey. Simply indicate estimates with an asterisk (*).			
The duplicate copy of the questionnaire is for your files. The addressed copy should be returned in the enclosed preaddressed envelope.			
If we can be of assistance in completing this questionnaire, please call us collect at (301) 763-2896. Your participation in this voluntary survey will be appreciated.			
Sincerely,			
			
VINCENT P. BARABBA Director Bureau of the Census			
Enclosures			
		PLEASE CORRECT ANY ERROR IN NAME AND ADDRESS INCLUDING ZIP CODE	
		In correspondence pertaining to this report please refer to this number.	
		2	

(CONTINUED)

ANNUAL PERIOD COVERED BY THIS REPORT	Beginning			Ending			<b>ANNUAL INFORMATION</b> - Indicate the annual period covered by the report. Data are requested on a fiscal year basis from July 1, 1973 through June 30, 1974, if possible. If the facility began operation after May 31, 1974, so indicate and do not complete the remainder of the form.
	Month	Day	Year	Month	Day	Year	
<b>Section I - ADMINISTERING AGENCY</b>							
Please give name and address of the agency, court, board, etc., directly responsible for administering the institution or program.							
NAME							
STREET							
CITY							
STATE							
ZIP CODE							
<b>Section II - TYPE OF INSTITUTION OR PROGRAM</b>							
<b>A. Is this facility or program primarily a -</b> (If the facility has a multiple function such as a training school which includes a reception or diagnostic center serving more than that facility, mark (X) as many types as applicable, explaining in the "Notes" space below.)							
<div style="display: flex; flex-wrap: wrap;"> <div style="width: 50%;"> <p>1 <input type="checkbox"/> <b>Detention center</b> - Provides temporary care, in a physically restricting environment for juveniles in custody pending court disposition, and often for juveniles who are adjudicated delinquent or are awaiting return to another jurisdiction.</p> <p>2 <input type="checkbox"/> <b>Shelter</b> - Provides temporary care similar to that of a detention center, in a physically unrestricting environment.</p> <p>3 <input type="checkbox"/> <b>Reception or diagnostic center</b> - screens juvenile court commitments and assigns them to appropriate treatment facilities.</p> <p>4 <input type="checkbox"/> <b>Training school</b> - a specialized institution serving delinquent juveniles committed directly to it by juvenile court or placed in it by an agency having such authority.</p> <p>5 <input type="checkbox"/> <b>Ranch, forestry camp, farm</b> - residential treatment facility for juveniles whose behavior does not necessitate the strict confinement of a training school, often allowing them greater contact with the community.</p> </div> <div style="width: 50%;"> <p>6 <input type="checkbox"/> <b>Halfway house</b> - facility where juveniles are placed while on probation or aftercare/parole, allowing them extensive contact with the community such as jobs and schools.</p> <p>7 <input type="checkbox"/> <b>Group home</b> - facility where juveniles are allowed extensive contact with the community such as jobs and schools, but are not placed there while on probation or aftercare/parole.</p> <p>8 <input type="checkbox"/> <b>Non-residential community program</b> - children live at home but are required to attend daily sessions at the facility that usually include educational and counseling services. (Completion of remainder of questionnaire is not required.)</p> <p>9 <input type="checkbox"/> <b>Other - Specify</b> _____</p> </div> </div>							
<b>B. Is this facility administered by - Mark (X) one box</b>							
<div style="display: flex; flex-wrap: wrap;"> <div style="width: 50%;"> <p>1 <input type="checkbox"/> State</p> <p>2 <input type="checkbox"/> County</p> <p>3 <input type="checkbox"/> City</p> </div> <div style="width: 50%;"> <p>4 <input type="checkbox"/> Multi-governmental - Specify _____</p> <p>5 <input type="checkbox"/> Private (Complete sections of questionnaire which apply to your facility)</p> </div> </div>							
<b>C. Does the facility hold -</b>							
<div style="display: flex; flex-wrap: wrap;"> <div style="width: 50%;"> <p>1 <input type="checkbox"/> Males only</p> <p>2 <input type="checkbox"/> Females only</p> </div> <div style="width: 50%;"> <p>3 <input type="checkbox"/> Both males and females</p> </div> </div>							
Notes							

FORM C.J-17 (6-13-74)
Page 2

(CONTINUED)

[illegible]

(CONTINUED)

Section III - INSTITUTIONAL POPULATION - Continued					
E. What was the average daily population in the facility during the annual period covered by this report?				MALE	FEMALE
F. Enter the numbers of "Juveniles adjudicated delinquent" and "Juvenile status offenders (CHINS)" held on June 30, 1974, by type of offense. (Should equal the figures reported in the corresponding categories in section IIID, on page 3. If exact offense data are not available and estimates can be made, estimate and describe the estimation procedure in the Notes space below.)					
TOTAL juveniles adjudicated delinquent and juveniles in need of supervision					
a. Felony (number of juveniles held on charges that would be felonies if committed by adults) except drug offenses					
b. Misdemeanor (number of juveniles held on charges that would be misdemeanors if committed by adults) except drug offenses					
c. Drug offenses					
d. Juvenile offenses (number of juveniles held on charges that would not be crimes if committed by adults)					
e. Offense data not available					
G. How many juveniles is your facility designed to hold, without overcrowding? Examples of overcrowding would include double decked bunks where facility was designed for single bunk, or temporary use of a room as sleeping quarters that would not ordinarily be used as such.)				MALE	FEMALE
Section IV - AGES OF JUVENILES					
A. What are the ages of the youngest and oldest juveniles that were held at the facility on June 30, 1974?				MALE	FEMALE
1. Age of youngest					
2. Age of oldest					
B. What was the average age of juveniles held at the facility on June 30, 1974? (If possible, compute the average age of juveniles held by adding the ages of all male juveniles held at the facility on June 30, 1974, and dividing by the total number of male juveniles held on June 30, 1974; and by adding the ages of all female juveniles held at the facility on June 30, 1974, and dividing by the total number of female juveniles held on June 30, 1974. If this computation is not possible, estimate and describe the estimation procedures in the Notes space below.)					
Section V - LENGTH OF JUVENILE STAY					
What is the average length of stay for juveniles in your facility? (If possible, compute the average length of stay by dividing the sum of lengths of stays for all juveniles released during the reporting period, by the total number of juveniles released during the same period. If this computation is not possible, estimate and describe the estimation procedure in the Notes space below.)				Months	Days
Notes					

(CONTINUED)

Section VI - INSTITUTIONAL PERSONNEL (Count each employee only once - in the primary position he fills)					
DEFINITIONS FOR THIS SECTION					
Payroll Staff - Full-time and part-time staff on the payroll of this facility.					
Non-payroll Staff - Full-time or part-time staff not on the payroll of this facility. Include personnel of a parent agency or other public agency or service (including school system), who are assigned for some or all of their working time to this facility. Include community volunteers, college interns, and personnel paid under contractual agreements or Federal grants.					
	Payroll staff (1)		Non-payroll staff (2)		
	Full-time	Part-time	Full-time	Part-time	
TOTAL number of employees on June 30, 1974					
a. Administrative employees - Include positions such as superintendent, director, administrator, assistant superintendent, business manager, stenographer, bookkeeper, switchboard operator, clerk, and typist.					
b. Treatment and educational employees - Include positions such as psychiatrist, psychologist, chaplain, academic principal, director of vocational training, academic teacher, vocational teacher, social worker, librarian, aftercare/parole worker, recreation worker, physician, registered nurse, practical nurse, medical aide, classification officer, and counselor.					
c. Custodial employees - Include positions such as house parent, group supervisor, group worker, cottage parent, and matron.					
d. Other employees - Include positions such as housekeeping, maintenance, and any other positions not included above					
Section VII - INSTITUTIONAL COST					
ANNUAL PERIOD COVERED	Beginning:		Ending:		Indicate fiscal year covered. Please report data on a fiscal year basis from July 1, 1973 through June 30, 1974, if possible.
	Month	Year	Month	Year	
A. Current operating expenditures					
1. Gross salaries and wages (Exclude employer contributions to employee benefits and report in 2.)					\$
2. Other operating expenditures, such as the purchase of food, supplies, and contractual services					\$
B. Capital expenditures, including new buildings, major repairs or improvements, and new equipment.					\$
Section VIII - I.Q. SCORES					
For what portion of juveniles does this facility have I.Q. scores on record? (Mark X one)					
<input type="checkbox"/> All <input type="checkbox"/> Over half <input type="checkbox"/> Half or less <input type="checkbox"/> None					
Notes					

## APPENDIX B

## COUNTY CODES

COUNTY CODE	COUNTY NAME	COUNTY CODE	COUNTY NAME
ALABAMA 01			
024	Dallas	049	Mobile
036	Jackson	051	Montgomery
037	Jefferson	052	Morgan
045	Madison		
ALASKA 02			
026	Ketchikan, Gateway	027	Greater Anchorage
ARIZONA 03			
001	Apache	008	Mohave
002	Cochise	010	Pima
003	Coconino	011	Pinal
004	Gila	014	Yuma
007	Maricopa		
ARKANSAS 04			
004	Benton	046	Miller
019	Cross	060	Pulaski
026	Garland	070	Union
035	Jefferson		
CALIFORNIA 05			
001	Alameda	033	Riverside
003	Amador	034	Sacramento
004	Butte	036	San Bernardino
007	Contra Costa	037	San Diego
008	Del Norte	038	San Francisco
009	El Dorado	039	San Joaquin
010	Fresno	040	San Luis Obispo

## (CONTINUED)

012 Humboldt  
 013 Imperial  
 015 Kern  
 016 Kings  
 019 Los Angeles  
 020 Madera  
 021 Marin  
 022 Mariposa  
 023 Mendocino  
 024 Merced  
 027 Monterey  
 028 Napa  
 029 Nevada  
 030 Orange  
 031 Placer

## COLORADO 06

001 Adams  
 003 Arapahoe  
 016 Denver

## CONNECTICUT 07

001 Fairfield  
 002 Hartford  
 004 Middlesex

## DELAWARE 08

001 Kent  
 002 New Castle

## DISTRICT OF COLUMBIA 09

001 District of Columbia

## FLORIDA 10

001 Alachua  
 003 Bay  
 005 Brevard  
 006 Broward  
 013 Dade  
 016 Duval

041 San Mateo  
 042 Santa Barbara  
 043 Santa Clara  
 044 Santa Cruz  
 045 Shasta  
 047 Siskiyou  
 048 Solano  
 049 Sonoma  
 050 Stanislaus  
 052 Tehama  
 054 Tulare  
 056 Ventura  
 057 Yolo  
 058 Yuba

021 El Paso  
 028 Huerfano  
 030 Jefferson

005 New Haven  
 006 New London

003 Sussex

041 Manatee  
 042 Marion  
 044 Monroe  
 045 Nassau  
 047 Okeechobee  
 048 Orange

## (CONTINUED)

017 Escambia  
 021 Gilchrist  
 029 Hillsborough  
 032 Jackson  
 035 Lake  
 036 Lee  
 037 Leon

050 Palm Beach  
 052 Pinellas  
 053 Polk  
 056 St. Lucie  
 058 Sarasota  
 059 Seminole  
 064 Volusia

## GEORGIA 11

005 Baldwin  
 011 Bibb  
 015 Bryan  
 025 Chatham  
 029 Clarke  
 031 Clayton  
 033 Cobb

044 De Kalb  
 047 Dougherty  
 057 Floyd  
 060 Fulton  
 069 Hall  
 121 Richmond  
 148 Ware

## HAWAII 12

002 Honolulu

004 Kauai

## IDAHO 13

022 Fremont

## ILLINOIS 14

008 Carroll  
 010 Champaign  
 016 Cook  
 022 Du Page  
 032 Grundy  
 042 Jersey  
 045 Kane  
 046 Kankakee  
 048 Knox

049 Lake  
 050 La Salle  
 058 Macon  
 060 Madison  
 072 Peoria  
 076 Pope  
 082 St. Clair  
 101 Winnebago

## INDIANA 15

002 Allen  
 010 Clark  
 018 Delaware  
 027 Grant  
 032 Hendricks  
 045 Lake

048 Madison  
 049 Marion  
 071 St. Joseph  
 079 Tippecanoe  
 084 Vigo

## IOWA 16

007 Black Hawk  
017 Cerro Gordo  
042 Hardin  
077 Polk  
085 Story

086 Tama  
091 Warren  
094 Webster  
097 Woodbury

## KANSAS 17

003 Atchison  
019 Crawford  
046 Johnson  
056 Lyon  
057 Mc Pherson  
061 Miami

062 Mitchell  
073 Pawnee  
085 Saline  
087 Sedgwick  
089 Shawnee  
105 Wyandotte

## KENTUCKY 18

016 Butler  
019 Campbell  
034 Fayette  
041 Grant  
056 Jefferson  
059 Kenton

083 Menifee  
088 Morgan  
098 Pike  
103 Rowan  
116 Wayne

## LOUISIANA 19

009 Caddo  
010 Calcasieu  
017 East Baton Rouge  
026 Jefferson

028 Lafayette  
036 Orleans  
037 Ouachita  
040 Rapides

## MAINE 20

003 Cumberland

006 Kennebec

## MARYLAND 21

001 Allegany  
003 Baltimore  
004 Baltimore City

012 Garrett  
017 Prince Georges

## MASSACHUSETTS 22

001 Barnstable  
007 Hampden  
009 Middlesex

013 Suffolk  
014 Worcester

## MICHIGAN 23

003 Allegan  
009 Bay  
011 Berrien  
013 Calhoun  
019 Clinton  
020 Crawford  
025 Genesee  
030 Hillsdale  
033 Ingham  
038 Jackson  
039 Kalamazoo  
041 Kent  
046 Lenawee  
050 Macomb

052 Marquette  
053 Mason  
058 Monroe  
061 Muskegon  
063 Oakland  
070 Ottawa  
072 Roscommon  
073 Saginaw  
074 St. Clair  
078 Shiawassee  
080 Van Buren  
081 Washtenaw  
082 Wayne

## MINNESOTA 24

002 Anoka  
025 Goodhue  
027 Hennepin  
031 Itasca  
049 Morrison

062 Ramsey  
069 St. Louis  
073 Stearns  
085 Winona

## MISSISSIPPI 25

023 Hancock  
024 Harrison  
025 Hinds

046 Marion  
075 Warren  
076 Washington

## MISSOURI 26

011 Buchanan  
012 Butler  
016 Cape Girardeau  
019 Cass  
024 Clay  
026 Cole  
027 Cooper  
039 Greene

048 Jackson  
050 Jefferson  
057 Lincoln  
059 Livingston  
089 Ray  
092 St. Charles  
095 St. Louis  
096 St. Louis City

## MONTANA 27

009 Custer  
015 Flathead

025 Lewis and Clark

## NEBRASKA 28

010 Buffalo  
028 Douglas

030 Fillmore  
055 Lancaster

## NEVADA 29

002 Clark  
004 Elko  
007 Humboldt

009 Lincoln  
016 Washoe

## NEW HAMPSHIRE 30

006 Hillsborough

## NEW JERSEY 31

001 Atlantic  
002 Bergen  
003 Burlington  
004 Camden  
006 Cumberland  
007 Essex  
008 Gloucester  
009 Hudson  
011 Mercer

012 Middlesex  
013 Monmouth  
014 Morris  
015 Ocean  
016 Passaic  
018 Somerset  
019 Sussex  
020 Union  
021 Warren

## NEW MEXICO 32

001 Bernalillo  
004 Colfax

026 Sante Fe

## NEW YORK 33

001 Albany  
004 Broome  
005 Cattaraugus  
011 Columbia  
013 Delaware  
014 Dutchess  
015 Erie  
018 Fulton  
028 Monroe  
030 Nassau

031 New York  
033 Oneida  
034 Onondaga  
036 Orange  
038 Oswego  
049 Schuyler  
052 Suffolk  
055 Tompkins  
056 Ulster  
060 Westchester

## NORTH CAROLINA 34

011 Buncombe  
013 Cabarrus  
032 Durham  
033 Edgecombe  
034 Forsyth  
039 Granville  
041 Guilford

054 Lenoir  
060 Mecklenburg  
063 Moore  
065 New Hanover  
077 Richmond  
092 Wake

## NORTH DAKOTA 35

008 Burleigh  
009 Cass  
018 Grand Forks

030 Morton  
053 Williams

## OHIO 36

003 Ashland  
004 Ashtabula  
009 Butler  
012 Clark  
018 Cuyahoga  
021 Delaware  
022 Erie  
023 Fairfield  
025 Franklin  
031 Hamilton  
035 Henry  
043 Lake

047 Lorain  
048 Lucas  
050 Mahoning  
057 Montgomery  
060 Muskingum  
072 Sandusky  
074 Seneca  
075 Shelby  
076 Stark  
077 Summit  
079 Tuscarawas  
083 Warren

## OKLAHOMA 37

002 Alfalfa  
014 Cleveland  
016 Comanche  
020 Custer  
051 Muskogee

054 Okfuskee  
055 Oklahoma  
063 Pottawatomie  
072 Tulsa

## OREGON 38

010 Douglas  
015 Jackson  
018 Klamath

020 Lane  
024 Marion  
026 Multnomah

## PENNSYLVANIA 39

002 Allegheny  
004 Beaver  
006 Berks  
007 Blair  
009 Bucks  
011 Cambria  
015 Chester  
023 Delaware  
030 Greene  
031 Huntingdon  
035 Lackawanna  
036 Lancaster

037 Lawrence  
039 Lehigh  
040 Luzerne  
046 Montgomery  
048 Northampton  
050 Perry  
051 Philadelphia  
054 Schuylkill  
063 Washington  
065 Westmoreland  
067 York

## RHODE ISLAND 40

004 Providence

## SOUTH CAROLINA 41

010 Charleston  
021 Florence

040 Richland

## SOUTH DAKOTA 42

002 Beadle  
017 Davison

050 Moody

## TENNESSEE 43

004 Bledsoe  
016 Coffee  
019 Davidson  
024 Fayette033 Hamilton  
047 Knox  
079 Shelby

## TEXAS 44

015 Bexar  
019 Bowie  
025 Brown  
049 Cooke  
050 Coryell  
057 Dallas  
071 El Paso  
101 Harris  
123 Jefferson144 Undocumented  
155 McLennan  
165 Midland  
178 Nueces  
188 Potter  
220 Tarrant  
227 Travis  
240 Webb

## UTAH 45

003 Cache  
004 Carbon  
011 Iron  
018 Salt Lake025 Utah  
027 Washington  
029 Weber

## VERMONT 46

(1) 001 Addison

## VIRGINIA 47

021 Chesterfield  
043 Henrico  
044 Henry  
073 Prince George  
082 Scott119 Petersburg  
120 Portsmouth  
121 Radford  
122 Richmond  
127 Virginia Beach084 Smyth  
101 Chesapeake  
102 Clifton Forge  
105 Danville  
109 Fredericksburg  
113 Hopewell128 Waynesboro  
130 Winchester  
132 Undocumented  
134 Undocumented  
135 Undocumented

## WASHINGTON 48

003 Benton  
004 Chelan  
005 Clallam  
006 Clark  
008 Cowlitz  
013 Grant  
017 King  
018 Kitsap  
021 Lewis023 Mason  
025 Pacific  
027 Pierce  
031 Snohomish  
032 Spokane  
034 Thurston  
036 Walla Walla  
037 Whatcom  
039 Yakima

## WEST VIRGINIA 49

006 Cabell  
013 Greenbrier  
017 Harrison  
020 Kanawha  
025 Marion026 Marshall  
046 Taylor  
047 Tucker  
054 Wood

## WISCONSIN 50

005 Brown  
013 Dane  
035 Lincoln  
041 Milwaukee  
042 Monroe045 Outagamie  
052 Racine  
054 Rock  
055 Rusk  
068 Waukesha

## WYOMING 51

017 Sheridan

022 Washakie

**END**