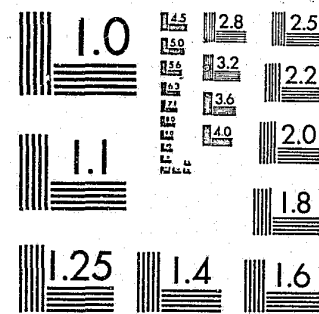


National Criminal Justice Reference Service

ncjrs

This microfiche was produced from documents received for inclusion in the NCJRS data base. Since NCJRS cannot exercise control over the physical condition of the documents submitted, the individual frame quality will vary. The resolution chart on this frame may be used to evaluate the document quality.



MICROCOPY RESOLUTION TEST CHART
NATIONAL BUREAU OF STANDARDS-1963-A

Microfilming procedures used to create this fiche comply with the standards set forth in 41CFR 101-11.504.

Points of view or opinions stated in this document are those of the author(s) and do not represent the official position or policies of the U. S. Department of Justice.

National Institute of Justice
United States Department of Justice
Washington, D. C. 20531

4/10/85

INTER-UNIVERSITY CONSORTIUM FOR
POLITICAL AND SOCIAL RESEARCH

SURVEY OF JAIL INMATES, 1972

(ICPSR 7668)

Principal
Investigator

Law Enforcement
Assistance Administration

First ICPSR Edition, 1978

96125

96125

U.S. Department of Justice
National Institute of Justice

This document has been reproduced exactly as received from the person or organization originating it. Points of view or opinions stated in this document are those of the authors and do not necessarily represent the official position or policies of the National Institute of Justice.

Permission to reproduce this copyrighted material has been granted by

Public Domain

U.S. Department of Justice

to the National Criminal Justice Reference Service (NCJRS).

Further reproduction outside of the NCJRS system requires permission of the copyright owner.

SURVEY OF JAIL INMATES, 1972

(ICPSR 7668)

Principal Investigator
Law Enforcement Assistance Administration

NCJRS

JAN 7 1985

ACQUISITIONS

Inter-university Consortium for Political and Social Research
P.O. Box 1248
Ann Arbor, Michigan 48106

ACKNOWLEDGEMENT OF ASSISTANCE

All manuscripts utilizing data made available through the Consortium should acknowledge that fact as well as identify the original collector of the data. The ICPSR Council urges all users of the ICPSR data facilities to follow some adaptation of this statement with the parentheses indicating items to be filled in appropriately or deleted by the individual user.

The data (and tabulation) utilized in this (publication) were made available (in part) by the Inter-university Consortium for Political and Social Research. The data for SURVEY OF JAIL INMATES, 1972 were originally collected by the Law Enforcement Assistance Administration. Neither the original collectors of the data nor the Consortium bear any responsibility for the analyses or interpretations presented here.

In order to provide funding agencies with essential information about the use of archival resources, and to facilitate the exchange of information about ICPSR participants' research activities, each user of ICPSR data facilities is expected to send two copies of each completed manuscript (or thesis abstract) to the Consortium. Please indicate in the cover letter which data were used.

SUMMARY OF CONTENTS

Study Description	1
Data Collection and Sample	2
Processing	2
Variable Table of Contents	3
Description of the Codebook	6
Codebook	8
Appendix I: Industry Codes	56
Appendix 2: Occupation Codes	74

STUDY DESCRIPTION

The Survey of Jail Inmates, 1972, was conducted in the summer of 1972 for the Law Enforcement Administration by the U.S. Bureau of the Census. The study is a follow-up to the National Jail Census, 1970. In addition to gathering more detailed information about jails, the survey also collected demographic data, incarceration history and legal status data from a sample of the inmates of local jails.

300* The study includes basic demographic data, income and employment data, reason for incarceration, bail status, dates of admission and sentencing, length and type of sentence and previous incarceration history.)

The inmates data file consists of information from a sample of the inmates of local jails. As in the National Jail Census, 1970, a local jail is defined as a locally administered institution that has authority to retain adults for 48 hours or longer. The following institutional types were excluded: federal and state correctional institutions, facilities used exclusively for juveniles, drunk tanks, lock-ups and other accommodations that retain persons for less than two full days, and state-operated jails. In addition, hospitals for the criminally insane were omitted. An individual facility was administratively considered a separate unit if it was geographically separated from the parent institution and held inmates for 48 or more hours.

[The survey consisted of personal interviews with 4,238 inmates in June and July of 1972. Interviews were conducted in 354 jails.]

DATA COLLECTION AND SAMPLE

The survey design for this study consisted of an original sample of 376 jails throughout the United States. There were 22 facilities at which no interviews were conducted either because they had no inmates when contacted or because they refused to participate in the survey.

The sample design was a two stage procedure with the first stage concerned with the selection of institutions: interviews were held within all jails with inmate populations of 250 or more, in one of six jails with 21 to 249 inmates and in one of thirty jails with fewer than 21 inmates. The second stage of the design pertains to the selection of inmates within the jails: in jails of 250 or more inmates, one in 30 were interviewed; in jails with a population of 21 to 249, one in five inmates were interviewed; in jails with less than 21 inmates, all clients were interviewed. About 16% of those inmates selected for interviewing were not interviewed, as some refused to participate, some were in court, and others were otherwise unavailable.

PROCESSING

Each of the 4,238 units in the data file represents an inmate of a local jail. Each unit is identified by the LEAA region number, identification codes for the jail and the inmate, the population of the area served by the jail and the jail site. No further identification is available in order to maintain the confidentiality of the respondents.

Variable Description List

Identification Variables

V1	Law Enforcement Assistance Administration Region Number
V2	Jail Number
V3	Inmate Number
V4	Area Served by Jail
V5	Jail Size
V6	Weight in XS3
V7	Interview Date, Month
V8	Interview Date, Day
V9	Interview Date, 1972
V10	Noninterview Reason

Inmate Demographic Information

V11	Sex
V12	Race
V13	Ethnic Origin
V14	Age
V15	Marital Status
V16	Highest Grade or Year of Regular School Attended
V17	Was Highest Grade or Year of Regular School Completed?
V18	Service in the U. S. Armed Forces?
V19	Dates of Service in the U. S. Armed Forces

Income and Employment

V20	Employment Status When Admitted to Institution
V21	What Doing When Admitted to Institution
V22	When Last Worked at Least Two Consecutive Weeks
V23	If Worked 1967 or Later, Month When Job Ended
V24	If Worked 1967 or Later, Year When Job Ended
V25	Number of Weeks Worked at Last Job
V26	Number of Months Worked at Last Job
V27	Number of Years Worked at Last Job
V28	Kind of Business or Industry Where Last Worked
V29	Sector or Type of Ownership of Employer at Last Job
V30	Kind of Work Done at Last Job
V31	Is Kind of Work Done at Last Job Usual Occupation?
V32	Usual Occupation
V33	Main Source of Income in Year Before Imprisoned
V34	Total Income During 12 Months Before Imprisoned
V35	Other Family Income During 12 Months Before Imprisoned
V36	Number of People Supported Besides Self
V37	People Supported Before Imprisoned Now on Welfare?

Offense and Admission Data

V38	Offense for Which Being Held
V39	Month Admitted to Institution for Present Offense
V40	Day Admitted to Institution for Present Offense
V41	Year Admitted to Institution for Present Offense

Legal Status

V42 Being Held for Other Authorities?
 V43 Held for Federal Authorities?
 V44 Held for Military Authorities?
 V45 Held for State Authorities?
 V46 Held for Probation Authorities?
 V47 Held for Parole Board?
 V48 Held for Other (Unspecified) Authorities?
 V49 Don't Know Which Authorities Being Held For
 V50 Awaiting Immediate Transfer to Another Institution?
 V51 Now Sentenced to Serve Time?
 V52 Awaiting Appeal from This Sentence?
 V53 Tried in Court and Waiting for a Sentence?
 V54 Awaiting Trial?
 V55 Appeared Before Judge, Magistrate, Commissioner?
 V56 Month Appeared Before Judge, Magistrate, Commissioner
 V57 Day Appeared Before Judge, Magistrate, Commissioner
 V58 Year Appeared Before Judge, Magistrate, Commissioner

Length and Type of Sentence

V59 Month When Sentenced
 V60 Day When Sentenced
 V61 Year When Sentenced
 V62 Total Length of Sentence in Months
 V63 Total Length of Sentence in Days
 V64 Total Length of Sentence in Years
 V65 In Work Release Program Outside Institution?
 V66 Beginning Month of Work Release Program
 V67 Beginning Day of Work Release Program
 V68 Beginning Year of Work Release Program
 V69 Ending Month of Work Release Program
 V70 Ending Day of Work Release Program
 V71 Ending Year of Work Release Program
 V72 Interview on Saturday or Sunday?
 V73 Serving Sentence on Weekends Only?
 V74 Beginning Month of Weekend Sentence
 V75 Beginning Day of Weekend Sentence
 V76 Beginning Year of Weekend Sentence
 V77 Ending Month of Weekend Sentence
 V78 Ending Day of Weekend Sentence
 V79 Ending Year of Weekend Sentence

Activities and Programs

V80 In Any Programs or Activities at This Institution?
 V81 Programs or Activities Participating In

Status of Bail and Legal Counsel

V82 Has Bail Been Set?
 V83 Date Bail Set, Month

V84 Date Bail Set, Day
 V85 Date Bail Set, Year
 V86 Amount of Bail Set By Judge, Magistrate, Commissioner
 V87 Amount to Pay Bondsman to Get Out on Bail
 V88 Reason for Not Contacting Bondsman
 V89 What Happened When Bondsman Contacted
 V90 Have Lawyer or Public Defender?

Previous Time in Jail, Sentences, and Probations

V91 Time in Jail During 12 Months Before This?
 V92 Number Weeks in Jail During 12 Months Before This
 V93 Number Months in Jail During 12 Months Before This
 V94 Any Previous Sentences?
 V95 Number of Sentences as Juvenile
 V96 Number of Sentences as Adult
 V97 Number of Sentences in County or City Jails
 V98 Name of Jail Given
 V99 State Where County or City Jail is Located
 V100 Length of Sentence in Days
 V101 Length of Sentence in Months
 V102 Length of Sentence in Years
 V103 Sentence Offense
 V104 Number of Sentences in State or Federal Institutions
 V105 Name of the State or Federal Institutions
 V106 State Where State or Federal Institution is Located
 V107 Length of Sentence in Days
 V108 Length of Sentence in Months
 V109 Length of Sentence in Years
 V110 Sentence Offense
 V111 Ever on Probation as a Juvenile or an Adult?
 V112 Number of Times on Probation as Juvenile
 V113 Number of Times on Probation as Adult

Description of the Codebook

This section contains an explanation of typical entries in the codebook which follows. The numbers in brackets do not appear in the codebook but are references to the descriptions which follow the examples.

-
- | | | |
|--|-----------------------|------------------|
| [1] V 18 | [5] Reference: | 0018 |
| [2] SERVE IN ARMED FORCES? | [6] File I. D. | INM |
| [3] Location: 39 Width: 1 | [7] Numeric character | |
| [4] Missing data: EQ 3 or GE 4 | | |
| [8] 7. Did you ever serve in the U. S. Armed Forces? | | |
| [9] 2541 | [10] 1 | [11] No |
| 1082 | 2 | Yes |
| 0 | 3 | Missing data |
| 594 | 4 | Question Skipped |
| 21 | 5 | No Valid Answer |
- [12] Ref. No. 4, 5. The code categories for Area Served by Jail and Jail Size overlap. This was done by the Bureau of the Census to protect the identities of the inmates interviewed.
-

1. The OSIRIS variable number. The variable number is used as the SPSS variable name when an OSIRIS file is processed by SPSS.
2. The abbreviated (24 characters maximum) variable label used within the OSIRIS or SPSS systems to identify the variable for the user.
3. The starting location and width of this variable in the data as stored on a magnetic tape. This is the format information needed to read the data into other systems.
4. The designation of missing data. In this example code values for SERVE IN ARMED FORCES? equal to three (EQ 3), and greater than or equal to four (GE 4) are missing data. Other notation, LE, meaning less than or equal to, may also be used. Some analysis software packages (including OSIRIS and SPSS) require that certain types of data which the user wants to exclude from analysis be designated as "missing data;" e.g., inappropriate, unascertained, unascertainable or ambiguous data categories. Although these categories are defined as missing data categories, this does not mean that a user should not or cannot use these codes in a substantive role if he or she wishes to do so.
5. The OSIRIS reference number. The LEAA Data Archive has adopted the OSIRIS III convention of assigning both a variable number and a reference number to each data item when a file is created. The intent is that, should the data be subsetted or rearranged, the variable numbers would change to reflect the order of the new data file, while the reference numbers would remain unchanged to reflect the variable numbers in the codebook describing the archived data file.
6. The three-column identification number unique to this data file.
7. The storage mode of the variable. All but three variables in the data

- file are stored in numeric character format. Reference numbers 28, 31, and 32 are stored as alphanumeric characters.
8. The unabbreviated variable label or the text of the question from the survey forms. The numbers at the beginning are the question numbers from the survey form. Although in many instances the actual question text has been paraphrased, an effort was made to use the same vocabulary and to retain the meaning on the original phrasing.
 9. The frequency of occurrence of each code value.
 10. The code values occurring in the data for this variable.
 11. The textual definitions of the codes. The first 20 characters are used as a short label which is sometimes used to document the output of analysis programs. A longer description follows the short label when necessary. Skip patterns in the questionnaire are included in the extended text, e.g., (Skip to 26, Ref. No. 90) means skip to question 26. Ref. No. is the OSIRIS reference number.
 12. Explanatory text referring to a group of variables which follows. These entries are used whenever a lengthy description applies to more than one or two variables or when some comment about a group of variables is needed.

V1
LEAA REGION NUMBER
LOCATION: 1 WIDTH: 2
MISSING DATA: EQ 11

REFERENCE: 0001
FILE I.D.: INM
NUMERIC CHARACTER

40	1 REGION 1 CONNECTICUT, MASSACHUSETTS, RHODE ISLAND, VERMONT, NEW HAMPSHIRE, MAINE
546	2 REGION 2 NEW JERSEY, NEW YORK
507	3 REGION 3 PENNSYLVANIA, MARYLAND, DISTRICT OF COLUMBIA,
791	4 REGION 4 NORTH CAROLINA, SOUTH CAROLINA, GEORGIA, FLORIDA, ALABAMA, MISSISSIPPI, TENNESSEE, KENTUCKY
539	5 REGION 5 OHIO, MICHIGAN, INDIANA, ILLINOIS, WISCONSIN, MINNESOTA
544	6 REGION 6 ARKANSAS, LOUISIANA, TEXAS, OKLAHOMA, NEW MEXICO
114	7 REGION 7 IOWA, KANSAS, MISSOURI, NEBRASKA
90	8 REGION 8 NORTH DAKOTA, SOUTH DAKOTA, MONTANA, WYOMING, UTAH, COLORADO
863	9 REGION 9 ARIZONA, NEVADA, CALIFORNIA, HAWAII
93	10 REGION 10 IDAHO, OREGON, WASHINGTON, ALASKA
111	11 N.A.

V2
JAIL NUMBER
LOCATION: 3 WIDTH: 6
MISSING DATA: EQ -1 OR LE -2

REFERENCE: 0002
FILE I.D.: INM
NUMERIC CHARACTER

UNIQUE NUMBER ASSIGNED TO IDENTIFY AN INSTITUTION
WITHIN THE SAME LEVEL OF GOVERNMENT.

V3
INMATE NUMBER
LOCATION: 9 WIDTH: 4
MISSING DATA: EQ -1 OR LE -2

REFERENCE: 0003
FILE I.D.: INM
NUMERIC CHARACTER

UNIQUE NUMBER TO IDENTIFY AN INMATE WITHIN AN
INSTITUTION.

REF. NOS. 4-5. THE CODE CATEGORIES FOR AREA SERVED BY
JAIL AND JAIL SIZE OVERLAP. THIS WAS DONE BY THE BUREAU OF
THE CENSUS TO PROTECT THE IDENTITIES OF INMATES INTERVIEWED.

V4
AREA SERVED BY JAIL
LOCATION: 13 WIDTH: 2
MISSING DATA: EQ 12

REFERENCE: 0004
FILE I.D.: INM
NUMERIC CHARACTER

106	1 SMSA
226	2 CENTRAL CITY OF SMSA
90	3 UNDER 500,000 POP
732	4 500,000 OR MORE
38	5 BALANCE OF SMSA
316	6 UNDER 1 MILLION
174	7 UNDER 250,000
369	8 250,000-999,999
1193	9 1 MILLION OR MORE
0	10 250,000 OR MORE
843	11 NO SMSA

(V4, AREA SERVED BY JAIL, CONTINUED)

151 12 N.A.

V5
JAIL SIZE
LOCATION: 15 WIDTH: 2
MISSING DATA: EQ 20

REFERENCE: 0005
FILE I.D.: INM
NUMERIC CHARACTER

200 1 0-99
192 2 0-49
177 3 0-9
154 4 10-19
109 5 20-29
45 6 30-39
0 7 40-49
83 8 50-99
0 9 50-74
33 10 75-99
220 11 100 OR MORE
510 12 100-499
232 13 100-199
90 14 200-299
59 15 300-399
58 16 400-499
552 17 500 OR MORE
124 18 500-999
381 19 1,000 OR MORE
1019 20 N.A.

V6
WEIGHT IN XS3
LOCATION: 17 WIDTH: 6
MISSING DATA: EQ -1 OR LE -2

REFERENCE: 0006
FILE I.D.: INM
NUMERIC CHARACTER

V7
INTERVIEW DATE, MONTH
LOCATION: 23 WIDTH: 2
<NO MISSING DATA DEFINED>

REFERENCE: 0007
FILE I.D.: INM
NUMERIC CHARACTER

1211 6 JUNE
3027 7 JULY

V8
INTERVIEW DATE, DAY
LOCATION: 25 WIDTH: 2
<NO MISSING DATA DEFINED>

REFERENCE: 0008
FILE I.D.: INM
NUMERIC CHARACTER

V9
INTERVIEW DATE, 1972
LOCATION: 27 WIDTH: 2
MISSING DATA: EQ 7

REFERENCE: 0009
FILE I.D.: INM
NUMERIC CHARACTER

ALL INTERVIEWS TOOK PLACE IN 1972, I.E., THE VALUE OF THIS VARIABLE IS A CONSTANT EQUAL TO 2.

V10
NONINTERVIEW REASON
LOCATION: 29 WIDTH: 1
MISSING DATA: EQ 7

REFERENCE: 0010
FILE I.D.: INM
NUMERIC CHARACTER

0 1 OUT ON BAIL
38 2 IN COURT
0 3 RELEASED
163 4 REFUSAL (JAILER)
155 5 REFUSAL (INMATE)
238 6 OTHER
3644 7 MISSING DATA

V11
SEX
LOCATION: 30 WIDTH: 1
<NO MISSING DATA DEFINED>

3981 1 MALE
257 2 FEMALE

V12
RACE
LOCATION: 31 WIDTH: 1
<NO MISSING DATA DEFINED>

2385 1 WHITE
1770 2 NEGRO OR BLACK
83 3 OTHER

V13
ETHNIC ORIGIN
LOCATION: 32 WIDTH: 1
MISSING DATA: EQ 5

2B. WHAT IS YOUR ETHNIC ORIGIN OR DESCENT?

247 1 MEXICAN
159 2 OTHER SPANISH
193 3 AMERICAN INDIAN
3297 4 OTHER
342 5 MISSING DATA

V14
AGE
LOCATION: 33 WIDTH: 2
<NO MISSING DATA DEFINED>

3. WHAT IS YOUR DATE OF BIRTH? (THIS RESPONSE WAS
CONVERTED BY THE BUREAU OF THE CENSUS TO RESPONDENT'S AGE IN
YEARS.)

REFERENCE: 0011
FILE I.D.: INM
NUMERIC CHARACTER

REFERENCE: 0012
FILE I.D.: INM
NUMERIC CHARACTER

REFERENCE: 0013
FILE I.D.: INM
NUMERIC CHARACTER

REFERENCE: 0014
FILE I.D.: INM
NUMERIC CHARACTER

V15
MARITAL STATUS
LOCATION: 35 WIDTH: 1
MISSING DATA: EQ 6 OR GE 7

4. ARE YOU NOW MARRIED, WIDOWED, DIVORCED, SEPARATED,
OR HAVE YOU NEVER BEEN MARRIED?

868 1 MARRIED
85 2 WIDOWED
513 3 DIVORCED
364 4 SEPARATED
1813 5 NEVER MARRIED
1 6 MISSING DATA
594 7 QUESTION SKIPPED

V16
YEARS SCHOOL ATTENDED
LOCATION: 36 WIDTH: 2
MISSING DATA: EQ 30 OR GE 31

REFERENCE: 0016
FILE I.D.: INM
NUMERIC CHARACTER

5. WHAT IS THE HIGHEST GRADE OR YEAR OF REGULAR SCHOOL
YOU HAVE EVER ATTENDED?

25 0 NEVER/KINDERGARTEN
NEVER ATTENDED SCHOOL OR ONLY ATTENDED
KINDERGARTEN (SKIP TO 7, REF. NO. 18)
10 1 FIRST GRADE
28 2 SECOND GRADE
32 3 THIRD GRADE
32 4 FOURTH GRADE
56 5 FIFTH GRADE
120 6 SIXTH GRADE
156 7 SEVENTH GRADE
367 8 EIGHTH GRADE

(V16, # YEARS SCHOOL ATTENDED, CONTINUED)

400 9 1ST YR HIGH SCHOOL
 553 10 2ND YR HIGH SCHOOL
 593 11 3RD YR HIGH SCHOOL
 889 12 4TH YR HIGH SCHOOL
 151 21 1ST YEAR COLLEGE
 120 22 2ND YEAR COLLEGE
 40 23 3RD YEAR COLLEGE
 35 24 4TH YEAR COLLEGE
 7 25 5TH YEAR COLLEGE
 14 26 6TH OR > YR COLLEGE
 12 30 MISSING DATA
 594 31 QUESTION SKIPPED
 4 32 NO VALID ANSWER

V17
 LAST SCHOOL YR COMPLETD?
 LOCATION: 38 WIDTH: 1
 MISSING DATA: EQ 3 OR GE 4

REFERENCE: 0017
 FILE I.D.: INM
 NUMERIC CHARACTER

6. DID YOU COMPLETE THAT GRADE? (HIGHEST GRADE OF REGULAR SCHOOL ATTENDED)

1459 1 NO
 2153 2 YES
 7 3 MISSING DATA
 619 4 QUESTION SKIPPED

V18
 SERVE IN ARMED FORCES?
 LOCATION: 39 WIDTH: 1
 MISSING DATA: EQ 3 OR GE 4

REFERENCE: 0018
 FILE I.D.: INM
 NUMERIC CHARACTER

7. DID YOU EVER SERVE IN THE U.S. ARMED FORCES?

(V18, SERVE IN ARMED FORCES?, CONTINUED)

2541 1 NO
 1082 2 YES
 594 4 QUESTION SKIPPED
 21 5 NO VALID ANSWER

V19
 WHEN IN ARMED FORCES
 LOCATION: 40 WIDTH: 1
 MISSING DATA: EQ 6 OR GE 7

REFERENCE: 0019
 FILE I.D.: INM
 NUMERIC CHARACTER

7. WHEN DID YOU SERVE IN THE ARMED FORCES? (THE RESPONSE CATEGORIES ON THE QUESTIONNAIRE WERE THE FOUR WAR-TIME PERIODS AND ONE PEACETIME PERIOD GIVEN HERE.)

1 1 APRIL 1917-NOV 1918
 WORLD WAR I
 252 2 SEPT 1940-JULY 1947
 WORLD WAR II
 178 3 JUNE 1950-JAN 1955
 KOREAN WAR
 500 4 AUG 1964-PRESENT
 VIET NAM
 142 5 ALL OTHER PERIODS
 PEACETIME
 2571 6 MISSING DATA
 594 7 QUESTION SKIPPED

V20
 EMPLOYED WHEN ADMITTED?
 LOCATION: 41 WIDTH: 1
 MISSING DATA: GE 5

REFERENCE: 0020
 FILE I.D.: INM
 NUMERIC CHARACTER

34. AT THE TIME YOU WERE ADMITTED TO AN INSTITUTION FOR THE PRESENT OFFENSE(S), DID YOU HAVE A JOB OR BUSINESS, EITHER FULL- OR PART-TIME?

1555 1 NO
 1666 2 YES, FULL-TIME
 (SKIP TO 37, REF. NOS. 25-27)

(V20, EMPLOYED WHEN ADMITTED?, CONTINUED)

- 415 3 YES, PART-TIME
(SKIP TO 37, REF. NOS. 25-27)
- 594 5 QUESTION SKIPPED
- 8 6 NO VALID ANSWER

V21
WHAT DOING WHEN ADMITTED
LOCATION: 42 WIDTH: 1
MISSING DATA: EQ 6 OR GE 7

REFERENCE: 0021
FILE I.D.: INM
NUMERIC CHARACTER

35. WHAT WERE YOU DOING AT THE TIME YOU WERE ADMITTED
TO AN INSTITUTION FOR THE PRESENT OFFENSE(S)?

- 537 1 NOTHING
- 385 2 LOOKING FOR WORK
- 116 3 GOING TO SCHOOL
- 111 4 UNABLE TO WORK
- 395 5 OTHER
- 19 6 MISSING DATA
- 2675 7 QUESTION SKIPPED

V22
WHEN LAST WORKED
LOCATION: 43 WIDTH: 1
MISSING DATA: EQ 5 OR GE 6

REFERENCE: 0022
FILE I.D.: INM
NUMERIC CHARACTER

36. WHEN DID YOU LAST WORK AT A JOB OR BUSINESS LASTING
AT LEAST TWO CONSECUTIVE WEEKS? EXCLUDE WORK DONE WHILE IN
JAIL.

- 81 1 NEVER WORKED AT ALL
(SKIP TO 44, REF NO. 33)
- 45 2 NEVER WORKED 2 WEEKS
(SKIP TO 44, REF NO. 33)
- 146 3 BEFORE 1967
(SKIP TO 44, REF NO. 33)
- 1280 4 1967 OR LATER

(V22, WHEN LAST WORKED, CONTINUED)

- 11 5 MISSING DATA
- 2675 6 QUESTION SKIPPED

V23
WORKED 1967 OR LATER, MO
LOCATION: 44 WIDTH: 2
MISSING DATA: EQ 13 OR GE 14

REFERENCE: 0023
FILE I.D.: INM
NUMERIC CHARACTER

36. IN WHAT MONTH DID YOU LAST WORK AT A JOB OR
BUSINESS LASTING AT LEAST TWO CONSECUTIVE WEEKS (1967 OR
LATER)? EXCLUDE WORK DONE WHILE IN JAIL.

- 106 1 JANUARY
- 82 2 FEBRUARY
- 93 3 MARCH
- 118 4 APRIL
- 120 5 MAY
- 135 6 JUNE
- 84 7 JULY
- 93 8 AUGUST
- 102 9 SEPTEMBER
- 94 10 OCTOBER
- 85 11 NOVEMBER
- 78 12 DECEMBER
- 18 13 MISSING DATA
- 2947 14 QUESTION SKIPPED
- 83 15 NO VALID ANSWER

V24
WORKED 1967 OR LATER, YR ...
LOCATION: 46 WIDTH: 2
MISSING DATA: EQ 73 OR GE 74

REFERENCE: 0024
FILE I.D.: INM
NUMERIC CHARACTER

36. IN WHAT YEAR DID YOU LAST WORK AT A JOB OR BUSINESS
LASTING AT LEAST TWO CONSECUTIVE WEEKS (1967 OR LATER)?
EXCLUDE WORK DONE WHILE IN JAIL.

(V24, WORKED 1967 OR LATER, YR, CONTINUED)

25 67 1967
 62 68 1968
 124 69 1969
 168 70 1970
 410 71 1971
 401 72 1972
 18 73 MISSING DATA
 2947 74 QUESTION SKIPPED
 83 75 NO VALID ANSWER

V25
 WEEKS WORKED AT JOB
 LOCATION: 48 WIDTH: 2
 MISSING DATA: EQ 5 OR GE 6

REFERENCE: 0025
 FILE I.D.: INM
 NUMERIC CHARACTER

37. HOW MANY WEEKS DID YOU WORK AT YOUR LAST JOB OR BUSINESS?

387 0 ZERO WEEKS
 112 1 ONE WEEK
 255 2 TWO WEEKS
 151 3 THREE WEEKS
 25 4 FOUR WEEKS
 2442 5 MISSING DATA
 866 6 QUESTION SKIPPED

V26
 MONTHS WORKED AT JOB
 LOCATION: 50 WIDTH: 2
 MISSING DATA: EQ 13 OR GE 14

REFERENCE: 0026
 FILE I.D.: INM
 NUMERIC CHARACTER

37. HOW MANY MONTHS DID YOU WORK AT YOUR LAST JOB OR BUSINESS?

(V26, MONTHS WORKED AT JOB, CONTINUED)

171 0 ZERO MONTHS
 308 1 ONE MONTH
 340 2 TWO MONTHS
 360 3 THREE MONTHS
 200 4 FOUR MONTHS
 127 5 FIVE MONTHS
 395 6 SIX MONTHS
 96 7 SEVEN MONTHS
 101 8 EIGHT MONTHS
 83 9 NINE MONTHS
 24 10 TEN MONTHS
 24 11 ELEVEN MONTHS
 6 12 TWELVE MONTHS
 1137 13 MISSING DATA
 866 14 QUESTION SKIPPED

V27
 YEARS WORKED AT JOB
 LOCATION: 52 WIDTH: 2
 MISSING DATA: EQ 50 OR GE 51

REFERENCE: 0027
 FILE I.D.: INM
 NUMERIC CHARACTER.

37. HOW MANY YEARS DID YOU WORK AT YOUR LAST JOB OR BUSINESS?

1915 50 MISSING DATA
 866 51 QUESTION SKIPPED

REF. NOS. 28, 30, 32. THESE VARIABLES CONTAIN NUMEROUS UNIDENTIFIED ALPHABETIC CODES AND HAVE BEEN LEFT IN THE ORIGINAL FORMAT UNTIL THE DATA CAN BE CORRECTED OR THE CODES IDENTIFIED. SEE APPENDICES 1 AND 2 FOR LISTS OF OCCUPATION AND INDUSTRY CODES.

V28
INDUSTRY WHERE WORKED
LOCATION: 54 WIDTH: 3
<NO MISSING DATA DEFINED>

REFERENCE: 0028
FILE I.D.: INM
ALPHABETIC CHARACTER

39. WHAT KIND OF BUSINESS OR INDUSTRY DID YOU LAST WORK FOR? FOR EXAMPLE, T.V. AND RADIO MANUFACTURING, SHOE STORE, FARM.

V29
SECTOR EMPLOYED BY
LOCATION: 57 WIDTH: 1
MISSING DATA: EQ 5 OR GE 6

REFERENCE: 0029
FILE I.D.: INM
NUMERIC CHARACTER

40. BY WHOM WERE YOU EMPLOYED? (ON THE QUESTIONNAIRE, RESPONSES WERE CODED AS THE SECTOR OF OWNERSHIP.)

- 2824 1 PRIVATE COMPANY
PRIVATE COMPANY, BUSINESS, OR INDIVIDUAL FOR WAGES, SALARY OR COMMISSIONS.
- 298 2 GOVERNMENT
FEDERAL, STATE, COUNTY, OR LOCAL GOVERNMENT.
- 199 3 OWN BUSINESS
OWN BUSINESS, PROFESSIONAL PRACTICE, OR FARM.
- 19 4 FAMILY BUS. W/O PAY
FAMILY BUSINESS OR FARM, WITHOUT PAY.
- 32 5 MISSING DATA
- 866 6 QUESTION SKIPPED

V30
KIND OF WORK, LAST JOB
LOCATION: 58 WIDTH: 3
<NO MISSING DATA DEFINED>

REFERENCE: 0030
FILE I.D.: INM
ALPHABETIC CHARACTER

41. WHAT KIND OF WORK WERE YOU DOING AT YOUR LAST JOB? FOR EXAMPLE, TRUCK DRIVER, STOCK CLERK, TYPIST.

V31
WAS USUAL KIND OF WORK?
LOCATION: 61 WIDTH: 1
MISSING DATA: EQ 3 OR GE 4

REFERENCE: 0031
FILE I.D.: INM
NUMERIC CHARACTER

43. IS THIS THE KIND OF WORK YOU USUALLY DO?

(V31, WAS USUAL KIND OF WORK?, CONTINUED)

- 1964 1 YES
(SKIP TO 44, REF NO. 33)
- 1361 2 NO
- 47 3 MISSING DATA
- 866 4 QUESTION SKIPPED

V32
USUAL OCCUPATION
LOCATION: 62 WIDTH: 3
<NO MISSING DATA DEFINED>

REFERENCE: 0032
FILE I.D.: INM
ALPHABETIC CHARACTER

43. WHAT IS YOUR USUAL OCCUPATION?

V33
MAIN SOURCE OF INCOME
LOCATION: 65 WIDTH: 1
MISSING DATA: EQ 5 OR GE 6

REFERENCE: 0033
FILE I.D.: INM
NUMERIC CHARACTER

44. IN THE YEAR BEFORE YOU WERE ADMITTED TO AN INSTITUTION FOR THE PRESENT OFFENSE(S), WHAT WAS YOUR MAIN SOURCE OF INCOME?

- 2491 1 WAGES AND SALARIES
- 69 2 SOCIAL SECURITY
- 273 3 WELFARE
- 782 4 OTHER
- 29 5 MISSING DATA
- 594 6 QUESTION SKIPPED

V34
12 MONTH INCOME
LOCATION: 66 WIDTH: 2
MISSING DATA: EQ 14 OR GE 15

REFERENCE: 0034
FILE I.D.: INM
NUMERIC CHARACTER

45. WHAT WAS YOUR TOTAL INCOME DURING THE 12 MONTHS BEFORE YOU WERE IMPRISONED FOR THE PRESENT OFFENSE(S)?

- 1046 1 UNDER \$1,000

(V34, 12 MONTH INCOME, CONTINUED)

564 2 \$1,000 TO 1,999
 408 3 \$2,000 TO 2,999
 352 4 \$3,000 TO 3,999
 309 5 \$4,000 TO 4,999
 243 6 \$5,000 TO 5,999
 228 7 \$6,000 TO 7,499
 179 8 \$7,500 TO 9,999
 81 9 \$10,000 TO 11,999
 66 10 \$12,000 TO 14,999
 25 11 \$15,000 TO 19,999
 12 12 \$20,000 TO 24,999
 23 13 \$25,000 AND OVER
 108 14 MISSING DATA
 594 15 QUESTION SKIPPED

V35
 OTHER FAMILY INCOME
 LOCATION: 68 WIDTH: 2
 MISSING DATA: EQ 16 OR GE 14

REFERENCE: 0035
 FILE I.D.: INM
 NUMERIC CHARACTER

47. WHAT WAS THE INCOME OF OTHER MEMBERS OF YOUR FAMILY
 WITH WHOM YOU WERE LIVING DURING THE 12 MONTHS BEFORE YOU
 WERE IMPRISONED?

458 1 UNDER \$1,000
 156 2 \$1,000 TO 1,999
 167 3 \$2,000 TO 2,999
 148 4 \$3,000 TO 3,999
 109 5 \$4,000 TO 4,999
 104 6 \$5,000 TO 5,999

(V35, OTHER FAMILY INCOME, CONTINUED)

99 7 \$6,000 TO 7,499
 91 8 \$7,500 TO 9,999
 76 9 \$10,000 TO 11,999
 66 10 \$12,000 TO 14,999
 47 11 \$15,000 TO 19,999
 40 12 \$20,000 TO 24,999
 22 13 \$25,000 AND OVER
 1329 14 NOT LIVING W/FAMILY
 NOT LIVING WITH FAMILY MEMBERS.
 697 15 DON'T KNOW
 52 16 MISSING DATA
 594 17 QUESTION SKIPPED
 1 18 NO VALID ANSWER

V36
 # SUPPORTED BESIDES SELF
 LOCATION: 70 WIDTH: 2
 MISSING DATA: EQ 15 OR GE 16

REFERENCE: 0036
 FILE I.D.: INM
 NUMERIC CHARACTER

48. HOW MANY PEOPLE WERE YOU SUPPORTING BEFORE YOU WERE
 ADMITTED, OTHER THAN YOURSELF?

2059 0 NONE
 461 1 ONE PERSON
 418 2 TWO PEOPLE
 291 3 THREE PEOPLE
 187 4 FOUR PEOPLE
 94 5 FIVE PEOPLE
 51 6 SIX PEOPLE
 21 7 SEVEN PEOPLE

(V36, # SUPPORTED BESIDES SELF, CONTINUED)

10 8 EIGHT PEOPLE
 10 9 NINE PEOPLE
 4 10 TEN PEOPLE
 3 11 ELEVEN PEOPLE
 1 12 TWELVE PEOPLE
 1 13 THIRTEEN PEOPLE
 2 14 FOURTEEN PEOPLE
 31 15 MISSING DATA
 594 16 QUESTION SKIPPED

V37
 SUPPORTD NOW ON WELFARE?
 LOCATION: 72 WIDTH: 1
 MISSING DATA: EQ 3 OR GE 4

REFERENCE: 0037
 FILE I.D.: INM
 NUMERIC CHARACTER

48. ARE THE PEOPLE YOU WERE SUPPORTING BEFORE YOU WERE
 ADMITTED NOW RECEIVING PUBLIC ASSISTANCE OR WELFARE?

873 1 NO
 623 2 YES
 89 3 MISSING DATA
 2653 4 QUESTION SKIPPED

V38
 OFFENSE NOW HELD FOR
 LOCATION: 73 WIDTH: 2
 MISSING DATA: EQ 20 OR GE 21

REFERENCE: 0038
 FILE I.D.: INM
 NUMERIC CHARACTER

8. FOR WHAT OFFENSE(S) ARE YOU NOW BEING HELD?

399 1 DRUNK, VAGRANCY
 DRUNKENNESS, VAGRANCY, DISORDERLY CONDUCT.
 289 2 TRAFFIC VIOLATIONS
 271 3 DRUGS, POSSESS, USE
 DRUGS, POSSESSION OR USE.

(V38, OFFENSE NOW HELD FOR, CONTINUED)

96 4 DRUG SALE
 23 5 DRUGS, N.A.
 386 6 ROBBERY
 449 7 BURGLARY
 118 8 GRAND LARCENY, THEFT
 115 9 PETTY LARCENY, THEFT
 83 10 LARCENY OR THEFT, NA
 94 11 AGGRAVATED ASSAULT
 70 12 SIMPLE ASSAULT
 29 13 ASSAULT, N.A.
 100 14 AUTO THEFT
 167 15 FORGERY OR FRAUD
 45 16 NONSUPPORT
 209 17 MURDER OR KIDNAPPING
 62 18 RAPE
 636 19 OTHER OFFENSES
 3 20 MISSING DATA
 594 21 QUESTION SKIPPED

V39
 DATE ADMITTED, MONTH
 LOCATION: 83 WIDTH: 2
 MISSING DATA: EQ 13 OR GE 14

REFERENCE: 0039
 FILE I.D.: INM
 NUMERIC CHARACTER

9. IN WHAT MONTH WERE YOU FIRST ADMITTED TO AN
 INSTITUTION FOR THIS (THESE) PRESENT OFFENSE(S)?

594 14 QUESTION SKIPPED
 28 15 NO VALID ANSWER

V40
DATE ADMITTED, DAY
LOCATION: 85 WIDTH: 2
MISSING DATA: GE 32

REFERENCE: 0040
FILE I.D.: INM
NUMERIC CHARACTER

9. ON WHAT DAY WERE YOU FIRST ADMITTED TO AN
INSTITUTION FOR THIS (THESE) PRESENT OFFENSE(S)?

594 32 QUESTION SKIPPED

28 33 NO VALID ANSWER

V41
DATE ADMITTED, YEAR
LOCATION: 87 WIDTH: 2
MISSING DATA: GE 73

REFERENCE: 0041
FILE I.D.: INM
NUMERIC CHARACTER

9. IN WHAT YEAR WERE YOU FIRST ADMITTED TO AN
INSTITUTION FOR THIS (THESE) PRESENT OFFENSE(S)?

594 73 QUESTION SKIPPED

28 74 NO VALID ANSWER

V42
HLD FOR OTHER AUTHORITY?
LOCATION: 89 WIDTH: 1
MISSING DATA: EQ 3 OR GE 4

REFERENCE: 0042
FILE I.D.: INM
NUMERIC CHARACTER

10. ARE YOU BEING HELD FOR OTHER AUTHORITIES?

3160 1 NO
(SKIP TO 12, REF. NO. 50)

475 2 YES

9 3 MISSING DATA

594 4 QUESTION SKIPPED

V43
HELD FOR FEDERAL
LOCATION: 90 WIDTH: 1
MISSING DATA: EQ 8 OR GE 9

REFERENCE: 0043
FILE I.D.: INM
NUMERIC CHARACTER

11. ARE YOU BEING HELD FOR FEDERAL AUTHORITIES?

(V43, HELD FOR FEDERAL, CONTINUED)

86 1 YES

398 8 MISSING DATA

3754 9 QUESTION SKIPPED

V44
HELD FOR MILITARY
LOCATION: 91 WIDTH: 1
MISSING DATA: EQ 8 OR GE 9

REFERENCE: 0044
FILE I.D.: INM
NUMERIC CHARACTER

11. ARE YOU BEING HELD FOR MILITARY AUTHORITIES?

40 2 YES

444 8 MISSING DATA

3754 9 QUESTION SKIPPED

V45
HELD FOR STATE
LOCATION: 92 WIDTH: 1
MISSING DATA: EQ 8 OR GE 9

REFERENCE: 0045
FILE I.D.: INM
NUMERIC CHARACTER

11. ARE YOU BEING HELD FOR STATE AUTHORITIES?

164 3 YES

320 8 MISSING DATA

3754 9 QUESTION SKIPPED

V46
HELD FOR PROBATION
LOCATION: 93 WIDTH: 1
MISSING DATA: EQ 8 OR GE 9

REFERENCE: 0046
FILE I.D.: INM
NUMERIC CHARACTER

11. ARE YOU BEING HELD FOR PROBATION AUTHORITIES?

33 4 YES

451 8 MISSING DATA

3754 9 QUESTION SKIPPED

V47
HELD FOR PAROLE BOARD
LOCATION: 94 WIDTH: 1
MISSING DATA: EQ 8 OR GE 9

REFERENCE: 0047
FILE I.D.: INM
NUMERIC CHARACTER

11. ARE YOU BEING HELD FOR A PAROLE BOARD?

73 5 YES

411 8 MISSING DATA

3754 9 QUESTION SKIPPED

V48
HELD FOR OTHER AUTHORITY
LOCATION: 95 WIDTH: 1
MISSING DATA: EQ 8 OR GE 9

REFERENCE: 0048
FILE I.D.: INM
NUMERIC CHARACTER

11. ARE YOU BEING HELD FOR OTHER (UNSPECIFIED) AUTHORITIES?

90 6 YES

394 8 MISSING DATA

3754 9 QUESTION SKIPPED

V49
DON'T KNOW WHO HELD FOR
LOCATION: 96 WIDTH: 1
MISSING DATA: EQ 8 OR GE 9

REFERENCE: 0049
FILE I.D.: INM
NUMERIC CHARACTER

11. ARE YOU BEING HELD FOR OTHER AUTHORITIES, BUT DON'T KNOW FOR WHICH AUTHORITIES?

8 7 YES

476 8 MISSING DATA

3754 9 QUESTION SKIPPED

V50
AWAITING TRANSFER
LOCATION: 97 WIDTH: 1
MISSING DATA: EQ 3 OR GE 4

REFERENCE: 0050
FILE I.D.: INM
NUMERIC CHARACTER

12. ARE YOU AWAITING IMMEDIATE TRANSFER TO ANOTHER INSTITUTION?

(V50, AWAITING TRANSFER, CONTINUED)

3377 1 NO

247 2 YES
(SKIP TO 28, REF. NO. 94)

20 3 MISSING DATA

594 4 QUESTION SKIPPED

V51
NOW SENTENCED
LOCATION: 98 WIDTH: 1
MISSING DATA: GE 4

REFERENCE: 0051
FILE I.D.: INM
NUMERIC CHARACTER

13. ARE YOU NOW SENTENCED TO SERVE TIME?

1678 1 NO
(SKIP TO 19, REF. NO. 53)

1719 2 YES

841 4 QUESTION SKIPPED

V52
AWAITING APPEAL
LOCATION: 99 WIDTH: 1
MISSING DATA: EQ 3 OR GE 4

REFERENCE: 0052
FILE I.D.: INM
NUMERIC CHARACTER

18. ARE YOU AWAITING APPEAL FROM THIS SENTENCE? THAT IS, ARE YOU GOING TO GO TO COURT AGAIN FOR THIS SENTENCE?

1541 1 NO
(SKIP TO 26, REF. NO. 90)

175 2 YES
(SKIP TO 26, REF. NO. 90)

3 3 MISSING DATA

2519 4 QUESTION SKIPPED

V53
TRIED, WAITING SENTENCE
LOCATION: 100 WIDTH: 1
MISSING DATA: GE 4

REFERENCE: 0053
FILE I.D.: INM
NUMERIC CHARACTER

19. HAVE YOU BEEN TRIED IN COURT AND ARE NOW WAITING FOR A SENTENCE?

(V53, TRIED, WAITING SENTENCE, CONTINUED)

1388 1 NO
 290 2 YES
 (SKIP TO 26, REF. NO. 90)
 2560 4 QUESTION SKIPPED

V54
 AWAITING TRIAL
 LOCATION: 101 WIDTH: 1
 MISSING DATA: EQ 3 OR GE 4

REFERENCE: 0054
 FILE I.D.: INM
 NUMERIC CHARACTER

20. ARE YOU AWAITING TRIAL?

74 1 NO
 1311 2 YES
 (SKIP TO 22, REF. NOS. 82-85)
 3 3 MISSING DATA
 2850 4 QUESTION SKIPPED

V55
 APPEARED BEFORE JUDGE?
 LOCATION: 102 WIDTH: 1
 MISSING DATA: EQ 3 OR GE 4

REFERENCE: 0055
 FILE I.D.: INM
 NUMERIC CHARACTER

21. HAVE YOU APPEARED BEFORE A JUDGE, MAGISTRATE, OR COMMISSIONER?

74 1 NO
 0 2 YES
 3 3 MISSING DATA
 4161 4 QUESTION SKIPPED

V56
 DATE BEFORE JUDGE, MONTH
 LOCATION: 103 WIDTH: 2
 MISSING DATA: EQ 13 OR GE 14

REFERENCE: 0056
 FILE I.D.: INM
 NUMERIC CHARACTER

21. WHAT WAS THE MONTH YOU APPEARED BEFORE A JUDGE, MAGISTRATE, OR COMMISSIONER?

(V56, DATE BEFORE JUDGE, MONTH, CONTINUED)

2 13 MISSING DATA
 4235 14 QUESTION SKIPPED
 1 15 NO VALID ANSWER

V57
 DATE BEFORE JUDGE, DAY
 LOCATION: 105 WIDTH: 2
 MISSING DATA: EQ 32 OR GE 33

REFERENCE: 0057
 FILE I.D.: INM
 NUMERIC CHARACTER

21. WHAT WAS THE DAY YOU APPEARED BEFORE A JUDGE, MAGISTRATE, OR COMMISSIONER?

2 32 MISSING DATA
 4235 33 QUESTION SKIPPED
 1 34 NO VALID ANSWER

V58
 DATE BEFORE JUDGE, YEAR
 LOCATION: 107 WIDTH: 2
 MISSING DATA: EQ 73 OR GE 74

REFERENCE: 0058
 FILE I.D.: INM
 NUMERIC CHARACTER

21. WHAT WAS THE YEAR YOU APPEARED BEFORE A JUDGE, MAGISTRATE, OR COMMISSIONER?

2 73 MISSING DATA
 4235 74 QUESTION SKIPPED
 1 75 NO VALID ANSWER

V59
 DATE SENTENCED, MONTH
 LOCATION: 109 WIDTH: 2
 MISSING DATA: GE 14

REFERENCE: 0059
 FILE I.D.: INM
 NUMERIC CHARACTER

13. IN WHAT MONTH WERE YOU SENTENCED?

2519 14 QUESTION SKIPPED
 130 15 NO VALID ANSWER

V60
DATE SENTENCED, DAY
LOCATION: 111 WIDTH: 2
MISSING DATA: GE 33

REFERENCE: 0060
FILE I.D.: INM
NUMERIC CHARACTER

13. ON WHAT DAY WERE YOU SENTENCED?

2519 33 QUESTION SKIPPED

130 34 NO VALID ANSWER

V61
DATE SENTENCED, YEAR
LOCATION: 113 WIDTH: 2
MISSING DATA: GE 74

REFERENCE: 0061
FILE I.D.: INM
NUMERIC CHARACTER

13. IN WHAT YEAR WERE YOU SENTENCED?

2519 74 QUESTION SKIPPED

130 75 NO VALID ANSWER

V62
SENTENCE IN MONTHS
LOCATION: 115 WIDTH: 2
MISSING DATA: EQ -1 OR LE -2

REFERENCE: 0062
FILE I.D.: INM
NUMERIC CHARACTER

14. WHAT IS THE TOTAL LENGTH OF YOUR SENTENCE IN MONTHS?

747 -1 MISSING DATA

2519 -2 QUESTION SKIPPED

V63
SENTENCE IN DAYS
LOCATION: 117 WIDTH: 6
MISSING DATA: EQ -1 OR LE -2

REFERENCE: 0063
FILE I.D.: INM
NUMERIC CHARACTER

14. WHAT IS THE TOTAL LENGTH OF YOUR SENTENCE IN DAYS?

-1 MISSING DATA

-2 QUESTION SKIPPED

V64
SENTENCE IN YEARS
LOCATION: 123 WIDTH: 3
MISSING DATA: EQ -1 OR LE -2

REFERENCE: 0064
FILE I.D.: INM
NUMERIC CHARACTER

14. WHAT IS THE TOTAL LENGTH OF YOUR SENTENCE IN YEARS?

932 -1 MISSING DATA

2519 -2 QUESTION SKIPPED

V65
IN WORK RELEASE PROGRAM?
LOCATION: 126 WIDTH: 1
MISSING DATA: EQ 3 OR GE 4

REFERENCE: 0065
FILE I.D.: INM
NUMERIC CHARACTER

15. DO YOU NOW WORK OUTSIDE THIS INSTITUTION IN A WORK RELEASE PROGRAM?

1581 1 NO
(SKIP TO 16, REF. NO. 72)

131 2 YES

1 3 MISSING DATA

2519 4 QUESTION SKIPPED

V66
BEGIN WORK RELEASE, MO
LOCATION: 127 WIDTH: 2
MISSING DATA: EQ 13 OR GE 14

REFERENCE: 0066
FILE I.D.: INM
NUMERIC CHARACTER

15. WHAT WAS THE BEGINNING MONTH OF WORK RELEASE PROGRAM?

1 13 MISSING DATA

4106 14 QUESTION SKIPPED

6 15 NO VALID ANSWER

V67
BEGIN WORK RELEASE, DAY--
LOCATION: 129 WIDTH: 2
MISSING DATA: EQ 32 OR GE 33

REFERENCE: 0067
FILE I.D.: INM
NUMERIC CHARACTER

15. WHAT WAS THE BEGINNING DAY OF WORK RELEASE PROGRAM?

(V67, BEGIN WORK RELEASE, DAY, CONTINUED)

- 1 32 MISSING DATA
4106 33 QUESTION SKIPPED
6 34 NO VALID ANSWER

V68
BEGIN WORK RELEASE, YEAR
LOCATION: 131 WIDTH: 2
MISSING DATA: EQ 73 OR GE 74

REFERENCE: 0068
FILE I.D.: INM
NUMERIC CHARACTER

15. WHAT WAS THE BEGINNING YEAR OF WORK RELEASE PROGRAM?

- 1 73 MISSING DATA
4106 74 QUESTION SKIPPED
6 75 NO VALID ANSWER

V69
END WORK RELEASE, MO.
LOCATION: 133 WIDTH: 2
MISSING DATA: GE 14

REFERENCE: 0069
FILE I.D.: INM
NUMERIC CHARACTER

15. WHAT IS THE ENDING MONTH OF WORK RELEASE PROGRAM?

- 4106 14 QUESTION SKIPPED
24 15 NO VALID ANSWER,

V70
END WORK RELEASE, DAY
LOCATION: 135 WIDTH: 2
MISSING DATA: GE 33

REFERENCE: 0070
FILE I.D.: INM
NUMERIC CHARACTER

15. WHAT IS THE ENDING DAY OF WORK RELEASE PROGRAM?

- 4106 33 QUESTION SKIPPED
24 34 NO VALID ANSWER

V71
END WORK RELEASE, YR.
LOCATION: 137 WIDTH: 2
MISSING DATA: GE 74

REFERENCE: 0071
FILE I.D.: INM
NUMERIC CHARACTER

(V71, END WORK RELEASE, YR., CONTINUED)

15. WHAT IS THE ENDING YEAR OF WORK RELEASE PROGRAM?

- 4106 74 QUESTION SKIPPED
24 75 NO VALID ANSWER

V72
INTERVIEW SAT. OR SUN.?
LOCATION: 139 WIDTH: 1
MISSING DATA: EQ 3 OR GE 4

REFERENCE: 0072
FILE I.D.: INM
NUMERIC CHARACTER

16. IS TODAY A SATURDAY OR SUNDAY? (IF THE DAY OF THE INTERVIEW WAS A SATURDAY OR SUNDAY, THEN QUESTIONS ABOUT A WEEKEND SENTENCE WERE ASKED.)

- 1072 1 NO
(SKIP TO 18, REF. NO. 52)
513 2 YES
(ASK 17, REF. NOS. 73-79)
3 3 MISSING DATA
2650 4 QUESTION SKIPPED

V73
WEEKEND SENTENCE ONLY?
LOCATION: 140 WIDTH: 1
MISSING DATA: EQ 3 OR GE 4

REFERENCE: 0073
FILE I.D.: INM
NUMERIC CHARACTER

17. ARE YOU SERVING YOUR SENTENCE ON WEEKENDS ONLY?

- 490 1 NO
22 2 YES
4 3 MISSING DATA
3722 4 QUESTION SKIPPED

V74
BEGIN WKEND SENTENCE, MO
LOCATION: 141 WIDTH: 2
MISSING DATA: EQ 13 OR GE 14

REFERENCE: 0074
FILE I.D.: INM
NUMERIC CHARACTER

17. WHAT WAS THE BEGINNING MONTH OF WEEKEND SENTENCE?

(V74, BEGIN WKEND SENTENCE, MO, CONTINUED)

4 13 MISSING DATA

4212 14 QUESTION SKIPPED

V75
 BEGIN WKEND SENTENCE, DA
 LOCATION: 143 WIDTH: 2
 MISSING DATA: EQ 32 OR GE 33

REFERENCE: 0075
 FILE I.D.: INM
 NUMERIC CHARACTER

17. WHAT WAS THE BEGINNING DAY OF WEEKEND SENTENCE?

4 32 MISSING DATA

4212 33 QUESTION SKIPPED

V76
 BEGIN WKEND SENTENCE, YR
 LOCATION: 145 WIDTH: 2
 MISSING DATA: EQ 73 OR GE 74

REFERENCE: 0076
 FILE I.D.: INM
 NUMERIC CHARACTER

17. WHAT WAS THE BEGINNING YEAR OF WEEKEND SENTENCE?

4 73 MISSING DATA

4212 74 QUESTION SKIPPED

V77
 END WEEKEND SENTENCE, MO
 LOCATION: 147 WIDTH: 2
 MISSING DATA: GE 14

REFERENCE: 0077
 FILE I.D.: INM
 NUMERIC CHARACTER

17. WHAT IS THE ENDING MONTH OF WEEKEND SENTENCE?

4212 14 QUESTION SKIPPED

4 15 NO VALID ANSWER

V78
 END WEEKEND SENTENCE, DA
 LOCATION: 149 WIDTH: 2
 MISSING DATA: GE 33

REFERENCE: 0078
 FILE I.D.: INM
 NUMERIC CHARACTER

17. WHAT IS THE ENDING DAY OF WEEKEND SENTENCE?

4212 33 QUESTION SKIPPED

(V78, END WEEKEND SENTENCE, DA, CONTINUED)

4 34 NO VALID ANSWER

V79
 END WEEKEND SENTENCE, YR
 LOCATION: 151 WIDTH: 2
 MISSING DATA: GE 74

REFERENCE: 0079
 FILE I.D.: INM
 NUMERIC CHARACTER

17. WHAT IS THE ENDING YEAR OF WEEKEND SENTENCE?

4212 74 QUESTION SKIPPED

4 75 NO VALID ANSWER

V80
 IN ANY PROGRAMS?
 LOCATION: 153 WIDTH: 1
 MISSING DATA: GE 4

REFERENCE: 0080
 FILE I.D.: INM
 NUMERIC CHARACTER

27. ARE YOU IN ANY PROGRAMS OR ACTIVITIES AT THIS
 INSTITUTION, SUCH AS VOCATIONAL TRAINING, PRETRIAL
 INTERVENTION PROGRAMS, EDUCATIONAL COURSES, GROUP
 COUNSELING, ETC.?

3038 1 NO

359 2 YES

841 4 QUESTION SKIPPED

V81
 PROGRAM OR ACTIVITY
 LOCATION: 154 WIDTH: 2
 MISSING DATA: EQ -1 OR LE -2

REFERENCE: 0081
 FILE I.D.: INM
 NUMERIC CHARACTER

27. WHAT KIND OF PROGRAMS OR ACTIVITIES ARE YOU IN?

57 1 JOB ORIENTED

150 2 EDUCATIONAL PROGRAM

81 3 PSYCHOLOGICAL/SOCIAL

1 4 PRETRIAL INTERVENTN
 PRETRIAL INTERVENTION27 5 ALCOHOL REHABILITATN
 ALCOHOLIC REHABILITATION

(V81, PROGRAM OR ACTIVITY, CONTINUED)

18 6 DRUG REHABILITATION
 24 7 OTHER
 1 -1 MISSING DATA
 3879 -2 QUESTION SKIPPED

V82
 HAS BAIL BEEN SET?
 LOCATION: 160 WIDTH: 1
 MISSING DATA: EQ 3 OR GE 4

REFERENCE: 0082
 FILE I.D.: INM
 NUMERIC CHARACTER

1VL2('HAS BAIL BEEN SET?')

22. HAS BAIL BEEN SET FOR YOU?

400 1 NO
 (SKIP TO 26, REF. NO. 90)
 986 2 YES
 2 3 MISSING DATA
 2850 4 QUESTION SKIPPED

V83
 DATE BAIL SET, MONTH
 LOCATION: 161 WIDTH: 2
 MISSING DATA: EQ 13 OR GE 14

REFERENCE: 0083
 FILE I.D.: INM
 NUMERIC CHARACTER

22. IN WHAT MONTH WAS THE BAIL SET?

24 13 MISSING DATA
 3250 14 QUESTION SKIPPED
 48 15 NO VALID ANSWER

V84
 DATE BAIL SET, DAY
 LOCATION: 163 WIDTH: 2
 MISSING DATA: EQ 32 OR GE 33

REFERENCE: 0084
 FILE I.D.: INM
 NUMERIC CHARACTER

22. ON WHAT DAY WAS THE BAIL SET?

24 32 MISSING DATA
 3250 33 QUESTION SKIPPED

(V84, DATE BAIL SET, DAY, CONTINUED)

48 34 NO VALID ANSWER

V85
 DATE BAIL SET, YEAR
 LOCATION: 165 WIDTH: 2
 MISSING DATA: EQ 73 OR GE 74

REFERENCE: 0085
 FILE I.D.: INM
 NUMERIC CHARACTER

22. IN WHAT YEAR WAS THE BAIL SET?

24 73 MISSING DATA
 3250 74 QUESTION SKIPPED
 48 75 NO VALID ANSWER

V86
 AMOUNT OF BAIL
 LOCATION: 167 WIDTH: 6
 MISSING DATA: EQ -1 OR LE -2

REFERENCE: 0086
 FILE I.D.: INM
 NUMERIC CHARACTER

23. WHAT WAS THE AMOUNT OF THE BAIL SET BY THE JUDGE, MAGISTRATE, OR COMMISSIONER?

-1 MISSING DATA
 -2 QUESTION SKIPPED
 -3 NO VALID ANSWER

V87
 AMOUNT TO PAY BONDSMAN
 LOCATION: 3 WIDTH: 6
 MISSING DATA: EQ -1 OR LE -2

REFERENCE: 0087
 FILE I.D.: INM
 NUMERIC CHARACTER

24. HOW MUCH WOULD YOU HAVE TO PAY A BONDSMAN TO GET OUT ON BAIL?

-1 MISSING DATA
 -2 QUESTION SKIPPED
 -3 NO VALID ANSWER

V88
 DID NOT CONTACT BONDSMAN
 LOCATION: 179 WIDTH: 1
 MISSING DATA: EQ 5 OR GE 6

REFERENCE: 0088
 FILE I.D.: INM
 NUMERIC CHARACTER

(V88, DID NOT CONTACT BONDSMAN, CONTINUED)

25. WHY DIDN'T YOU TRY TO CONTACT A BONDSMAN?

413 1 KNEW COULDN'T AFFORD
5 2 COULDN'T FIND BONDSMAN
HAD MONEY; COULDN'T FIND BONDSMAN.
51 3 PAROLE HOLD
PAROLE HOLD; COULDN'T BE RELEASED.
225 4 OTHER
294 5 MISSING DATA
3250 6 QUESTION SKIPPED

V89
TRIED TO CONTACT BONDSMAN
LOCATION: 180 WIDTH: 1
MISSING DATA: EQ 4 OR GE 5

REFERENCE: 0089
FILE I.D.: INM
NUMERIC CHARACTER

25. WHAT HAPPENED WHEN YOU TRIED TO CONTACT A BONDSMAN?

94 1 COULDN'T AFFORD BOND
46 2 BONDSMAN NOT WILLING
COULDN'T FIND BONDSMAN WILLING TO GIVE BOND.
124 3 OTHER
724 4 MISSING DATA
3250 5 QUESTION SKIPPED

V90
DO YOU HAVE LAWYER?
LOCATION: 181 WIDTH: 1
MISSING DATA: EQ 4 OR GE 5

REFERENCE: 0090
FILE I.D.: INM
NUMERIC CHARACTER

26. DO YOU OR DID YOU HAVE A LAWYER OR PUBLIC DEFENDER
AND IF SO, DID YOU OR YOUR FAMILY HAVE TO PAY FOR THE
LAWYER'S SERVICES?

1113 1 NO
1555 2 YES, NO FEE
717 3 YES, PAID FEE

(V90, DO YOU HAVE LAWYER?, CONTINUED)

12 4 MISSING DATA
841 5 QUESTION SKIPPED

V91
IN JAIL 12 MONTHS BEFORE
LOCATION: 182 WIDTH: 1
MISSING DATA: EQ 3 OR GE 4

REFERENCE: 0091
FILE I.D.: INM
NUMERIC CHARACTER

46. DID YOU SPEND ANY TIME IN JAIL DURING THE 12 MONTHS
BEFORE YOU WERE IMPRISONED FOR THIS (THESE) OFFENSE(S)?

2170 1 NO
1455 2 YES
19 3 MISSING DATA
594 4 QUESTION SKIPPED

V92
IN JAIL BEFORE, WEEKS
LOCATION: 183 WIDTH: 2
MISSING DATA: EQ 5 OR GE 6

REFERENCE: 0092
FILE I.D.: INM
NUMERIC CHARACTER

46. HOW MANY WEEKS DID YOU SPEND IN JAIL DURING THE 12
MONTHS BEFORE YOU WERE IMPRISONED FOR THIS (THESE)
OFFENSE(S)?

108 0 ZERO WEEKS
276 1 ONE WEEK
182 2 TWO WEEKS
86 3 THREE WEEKS
28 4 FOUR WEEKS
794 5 MISSING DATA
2764 6 QUESTION SKIPPED

V93
IN JAIL BEFORE, MONTHS
LOCATION: 185 WIDTH: 2
MISSING DATA: EQ 13 OR GE 14

REFERENCE: 0093
FILE I.D.: INM
NUMERIC CHARACTER

(V93, IN JAIL BEFORE, MONTHS, CONTINUED)

46. HOW MANY MONTHS DID YOU SPEND IN JAIL DURING THE 12 MONTHS BEFORE YOU WERE IMPRISONED FOR THIS (THESE) OFFENSE(S)?

60 0 ZERO MONTHS
210 1 ONE MONTH
125 2 TWO MONTHS
136 3 THREE MONTHS
94 4 FOUR MONTHS
51 5 FIVE MONTHS
110 6 SIX MONTHS
34 7 SEVEN MONTHS
55 8 EIGHT MONTHS
35 9 NINE MONTHS
35 10 TEN MONTHS
22 11 ELEVEN MONTHS
47 12 TWELVE MONTHS
446 13 MISSING DATA
2764 14 QUESTION SKIPPED
14 15 NO VALID ANSWER

V94
PREVIOUS SENTENCES
LOCATION: 187 WIDTH: 1
MISSING DATA: EQ 3 OR GE 4

REFERENCE: 0094
FILE I.D.: INM
NUMERIC CHARACTER

28. HAVE YOU EVER BEEN SENTENCED BEFORE TO SERVE TIME IN A COUNTY OR CITY JAIL, REFORMATORY, OR WORKHOUSE FOR DRUNKENNESS, VAGRANCY, OR TRAFFIC OFFENSES, NOT INCLUDING THIS TIME, OR OTHER TIMES WHEN HELD PENDING TRIAL, BEFORE BAIL, ETC.?

2333 1 NO
(SKIP TO 29, REF. NO. 97)

(V94, PREVIOUS SENTENCES, CONTINUED)

1301 2 YES
10 3 MISSING DATA
594 4 QUESTION SKIPPED

V95
SENTENCES AS JUVENILE
LOCATION: 188 WIDTH: 2
MISSING DATA: EQ -1 OR LE -2

REFERENCE: 0095
FILE I.D.: INM
NUMERIC CHARACTER

28. HOW MANY TIMES AS A JUVENILE WERE YOU SENTENCED TO SERVE TIME IN A COUNTY OR CITY JAIL, REFORMATORY, OR WORKHOUSE FOR DRUNKENNESS, VAGRANCY, OR TRAFFIC OFFENSES?

176 -1 MISSING DATA
2927 -2 QUESTION SKIPPED

V96
SENTENCES AS ADULT
LOCATION: 190 WIDTH: 2
MISSING DATA: EQ -1 OR LE -2

REFERENCE: 0096
FILE I.D.: INM
NUMERIC CHARACTER

28. HOW MANY TIMES AS AN ADULT WERE YOU SENTENCED TO SERVE TIME IN A COUNTY OR CITY JAIL, REFORMATORY, OR WORKHOUSE FOR DRUNKENNESS, VAGRANCY, OR TRAFFIC OFFENSES?

78 -1 MISSING DATA
2927 -2 QUESTION SKIPPED

V97
SENTENCES CITY, COUNTY
LOCATION: 192 WIDTH: 2
MISSING DATA: LE -2

REFERENCE: 0097
FILE I.D.: INM
NUMERIC CHARACTER

29. HAVE YOU EVER BEEN SENTENCED BEFORE TO SERVE TIME IN A COUNTY OR CITY JAIL, WORKHOUSE, OR REFORMATORY FOR ANY OFFENSES? INCLUDE JUVENILE OFFENSES.

2173 0 NO
(SKIP TO 31, REF. NO. 104)
785 1 1 PREVIOUS SENTENCE
304 2 2 PREVIOUS SENTENCES

(V97, # SENTENCES CITY, COUNTY, CONTINUED)

160 3 3 PREVIOUS SENTENCES
 90 4 4 PREVIOUS SENTENCES
 60 5 5 PREVIOUS SENTENCES
 38 6 6 PREVIOUS SENTENCES
 5 7 7 PREVIOUS SENTENCES
 10 8 8 PREVIOUS SENTENCES
 5 9 9 PREVIOUS SENTENCES
 4 10 10 PREVIOUS SENTENCES
 2 11 11 PREVIOUS SENTENCES
 8 12 12 PREVIOUS SENTENCES
 -2 QUESTION SKIPPED

V98

CTY/CNTY SENTENCE-PRISON
 LOCATION: 194 WIDTH: 2
 MISSING DATA: EQ 2 OR GE 3

REFERENCE: 0098
 FILE I.D.: INM
 NUMERIC CHARACTER

WHAT IS THE NAME OF THE INSTITUTION TO WHICH YOU WERE
 SENTENCED? (THIS INFORMATION HAS BEEN DELETED BY THE BUREAU
 OF THE CENSUS FOR REASONS OF PRIVACY.)

1459 1 PRISON NAME GIVEN
 12 2 MISSING DATA
 2767 3 QUESTION SKIPPED

V99

CTY/CNTY SENTENCE-STATE
 LOCATION: 218 WIDTH: 2
 MISSING DATA: EQ 52 OR GE 53

REFERENCE: 0099
 FILE I.D.: INM
 NUMERIC CHARACTER

30B1. IN WHAT STATE IS THIS INSTITUTION?

13 1 ALABAMA
 0 2 ALASKA

(V99, CTY/CNTY SENTENCE-STATE, CONTINUED)

17 3 ARIZONA
 2 4 ARKANSAS
 351 5 CALIFORNIA
 10 6 COLORADO
 1 7 CONNECTICUT
 2 8 DELAWARE
 7 9 DISTRICT OF COLUMBIA
 102 10 FLORIDA
 58 11 GEORGIA
 0 12 HAWAII
 6 13 IDAHO
 47 14 ILLINOIS
 22 15 INDIANA
 7 16 IOWA
 3 17 KANSAS
 9 18 KENTUCKY
 44 19 LOUISIANA
 2 20 MAINE
 26 21 MARYLAND
 22 22 MASSACHUSETTS
 79 23 MICHIGAN
 11 24 MINNESOTA
 9 25 MISSISSIPPI
 23 26 MISSOURI
 3 27 MONTANA

(V99, CTY/CNTY SENTENCE-STATE, CONTINUED)

2 28 NEBRASKA
 6 29 NEVADA
 1 30 NEW HAMPSHIRE
 49 31 NEW JERSEY
 4 32 NEW MEXICO
 168 33 NEW YORK
 21 34 NORTH CAROLINA
 1 35 NORTH DAKOTA
 38 36 OHIO
 7 37 OKLAHOMA
 8 38 OREGON
 76 39 PENNSYLVANIA
 0 40 RHODE ISLAND
 11 41 SOUTH CAROLINA
 3 42 SOUTH DAKOTA
 25 43 TENNESSEE
 78 44 TEXAS
 3 45 UTAH
 1 46 VERMONT
 41 47 VIRGINIA
 15 48 WASHINGTON
 9 49 WEST VIRGINIA
 13 50 WISCONSIN
 3 51 WYOMING
 12 52 MISSING DATA

(V99, CTY/CNTY SENTENCE-STATE, CONTINUED)

2767 53 QUESTION SKIPPED

V100
 CTY/CNTY SENTENCE-DAYS
 LOCATION: 242 WIDTH: 2
 MISSING DATA: EQ -1 OR LE -2

REFERENCE: 0100
 FILE I.D.: INM
 NUMERIC CHARACTER

30C1. WHAT WAS THE LENGTH OF THIS SENTENCE IN DAYS?

936 -1 MISSING DATA

2767 -2 QUESTION SKIPPED

V101
 CTY/CNTY SENTENCE-MONTHS
 LOCATION: 266 WIDTH: 2
 MISSING DATA: EQ -1 OR LE -2

REFERENCE: 0101
 FILE I.D.: INM
 NUMERIC CHARACTER

30C1. WHAT WAS THE LENGTH OF THIS SENTENCE IN MONTHS?

488 -1 MISSING DATA

2767 -2 QUESTION SKIPPED

V102
 CTY/CNTY SENTENCE-YEARS
 LOCATION: 290 WIDTH: 2
 MISSING DATA: EQ -1 OR LE -2

REFERENCE: 0102
 FILE I.D.: INM
 NUMERIC CHARACTER

30C1. WHAT WAS THE LENGTH OF THIS SENTENCE IN YEARS?

914 -1 MISSING DATA

2767 -2 QUESTION SKIPPED

V103
 CTY/CNTY SENTENCE-OFFENS
 LOCATION: 314 WIDTH: 2
 MISSING DATA: EQ 20 OR GE 21

REFERENCE: 0103
 FILE I.D.: INM
 NUMERIC CHARACTER

30D1. FOR WHAT OFFENSE WAS THIS SENTENCE?

100 1 DRUNK, VAGRANCY
 DRUNKENNESS, VAGRANCY, DISORDERLY CONDUCT.

48 2 TRAFFIC VIOLATIONS

(V103, CTY/CNTY SENTENCE-OFFENS, CONTINUED)

132 3 DRUGS, POSSESS, USE
 DRUGS, POSSESSION OR USE.
 19 4 DRUG SALE
 3 5 DRUGS, N.A.
 67 6 ROBBERY
 225 7 BURGLARY
 59 8 GRAND LARCENY, THEFT
 123 9 PETTY LARCENY, THEFT
 63 10 LARCENY OR THEFT, NA
 23 11 AGGRAVATED ASSAULT
 68 12 SIMPLE ASSAULT
 18 13 ASSAULT, N.A.
 75 14 AUTO THEFT
 66 15 FORGERY OR FRAUD
 30 16 NONSUPPORT
 12 17 MURDER OR KIDNAPPING
 5 18 RAPE
 316 19 OTHER OFFENSES
 19 20 MISSING DATA
 2767 21 QUESTION SKIPPED

V104
 # SENTENCES STATE, FED
 LOCATION: 338 WIDTH: 2
 MISSING DATA: EQ -1 OR LE -2

REFERENCE: 0104
 FILE I.D.: INM
 NUMERIC CHARACTER

31. HAVE YOU EVER BEEN SENTENCED TO SERVE TIME IN A
 STATE PRISON, FEDERAL OR STATE PENITENTIARY, OR REFORMATORY?
 INCLUDE JUVENILE OFFENSES.

0 NO

(SKIP TO 33, REF. NOS. 111-113)

(V104, # SENTENCES STATE, FED, CONTINUED)

1 1 PREVIOUS SENTENCE
 2 2 PREVIOUS SENTENCES
 3 3 PREVIOUS SENTENCES
 4 4 PREVIOUS SENTENCES
 5 5 PREVIOUS SENTENCES
 6 6 PREVIOUS SENTENCES
 7 7 PREVIOUS SENTENCES
 8 8 PREVIOUS SENTENCES
 9 9 PREVIOUS SENTENCES
 10 10 PREVIOUS SENTENCES
 11 11 PREVIOUS SENTENCES
 12 12 PREVIOUS SENTENCES
 -1 MISSING DATA
 594 -2 QUESTION SKIPPED

V105
 ST/FED SENTENCE-PRISON
 LOCATION: 340 WIDTH: 2
 MISSING DATA: EQ 4 OR GE 5

REFERENCE: 0105
 FILE I.D.: INM
 NUMERIC CHARACTER

32A1. WHAT IS THE NAME OF THE INSTITUTION TO WHICH YOU
 WERE SENTENCED? (THIS INFORMATION HAS BEEN DELETED BY THE
 BUREAU OF THE CENSUS FOR REASONS OF PRIVACY.)

70 2 PRISON NAME GIVEN
 1009 3 PRISON NAME GIVEN
 4 4 MISSING DATA
 3155 5 QUESTION SKIPPED

(V106, ST/FED SENTENCE-STATE, CONTINUED)

32B1. IN WHAT STATE IS THIS INSTITUTION?

25	1 ALABAMA
0	2 ALASKA
9	3 ARIZONA
11	4 ARKANSAS
202	5 CALIFORNIA
12	6 COLORADO
7	7 CONNECTICUT
1	8 DELAWARE
6	9 DISTRICT OF COLUMBIA
48	10 FLORIDA
40	11 GEORGIA
0	12 HAWAII
4	13 IDAHO
31	14 ILLINOIS
35	15 INDIANA
6	16 IOWA
15	17 KANSAS
20	18 KENTUCKY
36	19 LOUISIANA
1	20 MAINE
23	21 MARYLAND
6	22 MASSACHUSETTS
55	23 MICHIGAN
3	24 MINNESOTA

(V106, ST/FED SENTENCE-STATE, CONTINUED)

4	25 MISSISSIPPI
23	26 MISSOURI
3	27 MONTANA
6	28 NEBRASKA
4	29 NEVADA
0	30 NEW HAMPSHIRE
25	31 NEW JERSEY
4	32 NEW MEXICO
88	33 NEW YORK
18	34 NORTH CAROLINA
2	35 NORTH DAKOTA
34	36 OHIO
28	37 OKLAHOMA
8	38 OREGON
32	39 PENNSYLVANIA
1	40 RHODE ISLAND
12	41 SOUTH CAROLINA
1	42 SOUTH DAKOTA
25	43 TENNESSEE
86	44 TEXAS
5	45 UTAH
0	46 VERMONT
32	47 VIRGINIA
8	48 WASHINGTON
21	49 WEST VIRGINIA

(V106, ST/FED SENTENCE-STATE, CONTINUED)

11 50 WISCONSIN
 1 51 WYOMING
 5 52 MISSING DATA
 3155 53 QUESTION SKIPPED

V107
 ST/FED SENTENCE-DAYS
 LOCATION: 388 WIDTH: 2
 MISSING DATA: EQ -1 OR LE -2

REFERENCE: 0107
 FILE I.D.: INM
 NUMERIC CHARACTER

32C1. WHAT WAS THE LENGTH OF THIS SENTENCE IN DAYS?

877 -1 MISSING DATA
 3155 -2 QUESTION SKIPPED

V108
 ST/FED SENTENCE-MONTHS
 LOCATION: 412 WIDTH: 2
 MISSING DATA: EQ -1 OR LE -2

REFERENCE: 0108
 FILE I.D.: INM
 NUMERIC CHARACTER

32C1. WHAT WAS THE LENGTH OF THIS SENTENCE IN MONTHS?

582 -1 MISSING DATA
 3155 -2 QUESTION SKIPPED

V109
 ST/FED SENTENCE-YEARS
 LOCATION: 436 WIDTH: 2
 MISSING DATA: EQ -1 OR LE -2

REFERENCE: 0109
 FILE I.D.: INM
 NUMERIC CHARACTER

32C1. WHAT WAS THE LENGTH OF THIS SENTENCE IN YEARS?

239 -1 MISSING DATA
 3155 -2 QUESTION SKIPPED

V110
 ST/FED SENTENCE-OFFENSE
 LOCATION: 460 WIDTH: 2
 MISSING DATA: EQ 20 OR GE 21

REFERENCE: 0110
 FILE I.D.: INM
 NUMERIC CHARACTER

32D1. FOR WHAT OFFENSE WAS THIS SENTENCE?

(V110, ST/FED SENTENCE-OFFENSE, CONTINUED)

17 1 DRUNK, VAGRANCY
 DRUNKENNESS, VAGRANCY, DISORDERLY CONDUCT.
 12 2 TRAFFIC VIOLATIONS
 69 3 DRUGS, POSSESS, USE
 DRUGS, POSSESSION OR USE.
 20 4 DRUG SALE
 4 5 DRUGS, N.A.
 114 6 ROBBERY
 237 7 BURGLARY
 95 8 GRAND LARCENY, THEFT
 32 9 PETTY LARCENY, THEFT
 10 LARCENY OR THEFT, NA
 33 11 AGGRAVATED ASSAULT
 12 12 SIMPLE ASSAULT
 10 13 ASSAULT, N.A.
 97 14 AUTO THEFT
 84 15 FORGERY OR FRAUD
 7 16 NONSUPPORT
 29 17 MURDER OR KIDNAPPING
 11 18 RAPE
 159 19 OTHER OFFENSES
 9 20 MISSING DATA
 3155 21 QUESTION SKIPPED

V111
 EVER ON PROBATION?
 LOCATION: 484 WIDTH: 1
 MISSING DATA: EQ 3 OR GE 4

REFERENCE: 0111
 FILE I.D.: INM
 NUMERIC CHARACTER

33. HAVE YOU EVER BEEN ON PROBATION EITHER AS A
 JUVENILE OR AN ADULT? (DOES NOT INCLUDE PAROLES.)

(V111, EVER ON PROBATION?, CONTINUED)

1724 1 NO
 (SKIP TO 34, REF. NO. 20)
 1910 2 YES
 10 3 MISSING DATA
 594 4 QUESTION SKIPPED

V112
 # PROBATIONS AS JUVENILE
 LOCATION: 485 WIDTH: 2
 MISSING DATA: EQ -1 OR LE -2

REFERENCE: 0112
 FILE I.D.: INM
 NUMERIC CHARACTER

33. HOW MANY TIMES HAVE YOU BEEN ON PROBATION AS A JUVENILE?

812 0 NONE
 772 1 ONE TIME
 146 2 TWO TIMES
 59 3 THREE TIMES
 14 4 FOUR TIMES
 11 5 FIVE TIMES
 5 6 SIX TIMES
 2 7 SEVEN TIMES
 3 8 EIGHT TIMES
 1 9 NINE TIMES
 1 10 TEN TIMES
 1 11 ELEVEN TIMES
 2 12 TWELVE TIMES
 91 -1 MISSING DATA
 2318 -2 QUESTION SKIPPED

V113
 # PROBATIONS AS ADULT
 LOCATION: 487 WIDTH: 2
 MISSING DATA: EQ -1 OR LE -2

REFERENCE: 0113
 FILE I.D.: INM
 NUMERIC CHARACTER

33. HOW MANY TIMES HAVE YOU BEEN ON PROBATION AS AN ADULT?

547 0 NONE
 986 1 ONE TIME
 209 2 TWO TIMES
 46 3 THREE TIMES
 23 4 FOUR TIMES
 8 5 FIVE TIMES
 4 6 SIX TIMES
 2 7 SEVEN TIMES
 2 8 EIGHT TIMES
 4 10 TEN TIMES
 2 15 FIFTEEN TIMES
 1 24 TWENTY-FOUR TIMES
 1 30 THIRTY TIMES
 85 -1 MISSING DATA
 2318 -2 QUESTION SKIPPED

APPENDIX 1: INDUSTRY CODES

THE INDUSTRY CODES APPLY TO REFERENCE NUMBER 28, THE KIND OF INDUSTRY WHERE THE RESPONDENT LAST WORKED. THIS VARIABLE CONTAINS NUMEROUS UNDEFINED ALPHABETIC CODES, AND HAS BEEN LEFT IN ALPHABETIC CHARACTER FORMAT UNTIL CODING QUESTIONS CAN BE RESOLVED.

17-22. AGRICULTURE, FORESTRY, AND FISHERIES

- 017 AGRICULT PRODUCTION
AGRICULTURAL PRODUCTION (SIC 01)
- 018 AG SERV EXC HORTICUL
AGRICULTURAL SERVICES, EXCEPT HORTICULTURAL (SIC 07
EXCEPT SIC 0713 AND SIC 073)
- 019 HORTICULTURL SERVICE
HORTICULTURAL SERVICES (SIC 073)
- 027 FORESTRY
(SIC 08)
- 028 FISHERIES
(SIC 09)
- 029 AG, FOREST, FISH-ALLOC
AGRICULTURE, FORESTRY, AND FISHERIES--ALLOCATED

47-58. MINING

- 047 METAL MINING
(SIC 10)
- 048 COAL MINING
(SIC 11, 12)
- 049 CRUDE PETROL EXTRACT
CRUDE PETROLEUM AND NATURAL GAS EXTRACTIONS (SIC 13)
- 057 OTHER NONMETL MINING
NONMETALLIC MINING AND QUARRYING, EXCEPT FUEL (SIC 14)

058 MINING--ALLOCATED

67-78. CONSTRUCTION

- 067 GENRAL BLDG CONTRACT
GENERAL BUILDING CONTRACTORS (SIC 15)
- 068 GEN CONTRCT EXC BLDG
GENERAL CONTRACTORS, EXCEPT BUILDING (SIC 16)
- 069 SPEC TRADE CONTRACT
SPECIAL TRADE CONTRACTORS (SIC 17)
- 077 NOT SPECIF CONSTRUCT
NOT SPECIFIED CONSTRUCTION
- 078 CONSTRUCTION--ALLOC
CONSTRUCTION--ALLOCATED

107-247. MANUFACTURING, DURABLE GOODS

107-109. LUMBER AND WOOD PRODUCTS, EXCEPT FURNITURE

- 107 LOGGING
(SIC 241)
- 108 SAWMILL, PLANING MILL
SAWMILLS, PLANING MILLS, AND MILL WORK (SIC 242, 243)
- 109 MISC WOOD PRODUCTS
MISCELLANEOUS WOOD PRODUCTS (SIC 244, 249)
- 118 FURNITURE, FIXTURES
FURNITURE AND FIXTURES (SIC 25)

112-138. STONE, CLAY, AND GLASS PRODUCTS

- 119 GLASS, GLASS PRODUCTS
GLASS AND GLASS PRODUCTS (SIC 321-323)

- 127 CEMENT, CONCRET, GYPSM
CEMENT, CONCRETE, GYPSUM, AND PLASTER PRODUCTS (SIC
324, 327)
- 128 STRUCTURAL CLAY PROD
STRUCTURAL CLAY PRODUCTS (SIC 325)
- 137 POTTERY, RELATED PROD
POTTERY AND RELATED PRODUCTS (SIC 326)
- 138 MISC NONMETLIC, STONE
MISCELLANEOUS NONMETALLIC MINERAL AND STONE PRODUCTS
(SIC 328, 329)

132-162. METAL INDUSTRIES

- 139 BLAST FURN, STEEL WRK
BLAST FURNACES, STEEL WORKS, ROLLING AND FINISHING
MILLS (SIC 3312, 3313)
- 147 OTHER IRON, STEEL IND
OTHER PRIMARY IRON AND STEEL INDUSTRIES (SIC 3315-3317,
332, 3391, PART 3399)
- 148 PRIMARY ALUMINUM IND
PRIMARY ALUMINUM INDUSTRIES (SIC 3334, PART 334, 3352,
3361, PART 3392, PART 3399)
- 149 OTHER NONFERROUS IND
OTHER PRIMARY NONFERROUS INDUSTRIES (SIC 3331-3333,
3339, PART 334, 3351, 3356, 3357, 3362, 3369, PART
3392, PART 3399)
- 157 CUTLERY, HAND TOOLS
CUTLERY, HAND TOOLS, AND OTHER HARDWARE (SIC 342)
- 158 FAB STRUCTURAL METAL
FABRICATED STRUCTURAL METAL PRODUCTS (SIC 344)
- 159 SCREW MACHINE PROD
SCREW MACHINE PRODUCTS (SIC 345)
- 167 METAL STAMPING
(SIC 346)
- 168 MISC FAB METAL PROD
MISCELLANEOUS FABRICATED METAL PRODUCTS (SIC 341, 343,
347, 348, 349)

- 169 NOT SPECIF METAL IND
NOT SPECIFIED METAL INDUSTRIES

177-198. MACHINERY, EXCEPT ELECTRICAL

- 177 ENGINES & TURBINES
ENGINES AND TURBINES (SIC 351)
- 178 FARM MACHINERY, EQUIP
FARM MACHINERY AND EQUIPMENT (SIC 352)
- 179 CONSTRUCTION MACHINE
CONSTRUCTION AND MATERIAL HANDLING MACHINES (SIC 353)
- 187 METALWORK MACHINERY
METALWORKING MACHINERY (SIC 354)
- 188 OFFICE ACCOUNT MACH
OFFICE AND ACCOUNTING MACHINES (SIC 357 EXCEPT 3573)
- 189 ELEC COMPUTING EQUIP
ELECTRONIC COMPUTING EQUIPMENT (SIC 3573)
- 197 MACHINE EXC ELEC NEC
MACHINERY EXCEPT ELECTRICAL, N.E.C. (SIC 355, 356, 358,
359)
- 198 NOT SPECIF MACHINERY
NOT SPECIFIED MACHINERY

192-209. ELECTRICAL MACHINERY, EQUIPMENT, AND SUPPLIES

- 199 HOUSEHOLD APPLIANCES
(SIC 363)
- 207 RADIO, TV COMMUNICATN
RADIO, T.V., AND COMMUNICATION EQUIPMENT (SIC 365, 366)
- 208 ELECTRICAL MACH, EQUIP
ELECTRICAL MACHINERY, EQUIPMENT AND SUPPLIES, N.E.C.
(SIC 361, 362, 364, 367, 369)
- 209 NOT SPECIF ELEC MACH
NOT SPECIFIED ELECTRICAL MACHINERY, EQUIPMENT, AND
SUPPLIES

219-238. TRANSPORTATION EQUIPMENT

- 219 MOTOR VEHICLE, EQUIP
MOTOR VEHICLES AND MOTOR VEHICLE EQUIPMENT (SIC 371)
- 227 AIRCRAFT & PARTS
AIRCRAFT AND PARTS (SIC 372)
- 228 SHIP BUILDING, REPAIR
SHIP AND BOAT BUILDING AND REPAIRING (SIC 373)
- 229 RAILROAD LOCOMOTIVE
RAILROAD LOCOMOTIVES AND EQUIPMENT (SIC 374)
- 237 MOBILE DWELLINGS
MOBILE DWELLINGS AND CAMPERS (SIC 3791)
- 238 CYCLE, MISC TRANSPRT
CYCLES AND MISCELLANEOUS TRANSPORTATION EQUIPMENT (SIC 375, 3799)

239-257. PROFESSIONAL AND PHOTOGRAPHIC EQUIPMENT, AND WATCHES

- 239 SCIENT, CONTROL INSTR
SCIENTIFIC AND CONTROLLING INSTRUMENTS (SIC 381, 382)
- 247 OPTICAL, HEALTH SUPPLY
OPTICAL AND HEALTH SERVICES SUPPLIES (SIC 383, 384, 385)
- 248 PHOTOGRAPHIC EQUIP
PHOTOGRAPHIC EQUIPMENT AND SUPPLIES (SIC 386)
- 249 WATCHES, CLOCKS
WATCHES, CLOCKS, AND CLOCKWORK-OPERATED DEVICES (SIC 387)
- 257 NOT SPECIF PROF EQUIP
NOT SPECIFIED PROFESSIONAL EQUIPMENT
- 258 ORDNANCE
(SIC 19)

- 259 MISC MFG INDUSTRIES
MISCELLANEOUS MANUFACTURING INDUSTRIES (SIC 39)

- 267 MFG DURABLES-ALLOC
MANUFACTURING, DURABLE GOODS--ALLOCATED

268-299. MANUFACTURING, NONDURABLE GOODS**268-298. FOOD AND KINDRED PRODUCTS**

- 268 MEAT PRODUCTS
(SIC 201)
- 269 DAIRY PRODUCTS
(SIC 202)
- 278 CANNED FRUIT, VEG
CANNING AND PRESERVING FRUITS, VEGETABLES, AND SEA FOODS (SIC 203)
- 279 GRAIN-MILL PRODUCTS
(SIC 204, 0713)
- 287 BAKERY PRODUCTS
(SIC 205)
- 288 CONFECTIONERY PROD
CONFECTIONARY AND RELATED PRODUCTS (SIC 207)
- 289 BEVERAGE INDUSTRIES
(SIC 208)
- 297 MISC FOOD PREP
MISCELLANEOUS FOOD PREPARATION AND KINDRED PRODUCTS
(SIC 206, 209)
- 298 NOT SPECIF FOOD INDUST
NOT SPECIFIED FOOD INDUSTRIES
- 299 TOBACCO MFG
TOBACCO MANUFACTURERS (SIC 21)

301-318. TEXTILE MILL PRODUCTS

- 307 KNITTING MILLS
(SIC 225)
- 308 DYEING TEXTILES
DYEING AND FINISHING TEXTILES, EXCEPT WOOL AND KNIT
GOODS (SIC 226)
- 309 FLOOR COVERINGS
FLOOR COVERINGS, EXCEPT HARD SURFACE (SIC 227)
- 317 YARN, THREAD, FABRIC
YARN, THREAD, AND FABRIC MILLS (SIC 221-224, 228)
- 318 MISC TEXTILE PROD
MISCELLANEOUS FABRICATED TEXTILE PRODUCTS (SIC 229)
- ~~319-327~~ APPAREL AND OTHER FABRICATED TEXTILE PRODUCTS
- 319 APPAREL, ACCESSORIES
APPAREL AND ACCESSORIES (SIC 231-238)
- 327 MISC FAB TEXTILE
MISCELLANEOUS FABRICATED TEXTILE PRODUCTS (SIC 239)
- ~~328-337~~ PAPER AND ALLIED PRODUCTS
- 328 PULP, PAPER MILLS
PULP, PAPER, AND PAPERBOARD MILLS (SIC 261-263, 266)
- 329 MISC PAPER, PULP PROD
MISCELLANEOUS PAPER AND PULP PRODUCTS (SIC 264)
- 337 PAPERBOARD CONTAINER
PAPERBOARD CONTAINERS AND BOXES (SIC 265)
- 338 NEWSPAP PUBLSH, PRINT
NEWSPAPER PUBLISHING AND PRINTING (SIC 271)
- 339 OTHER PRINT, PUBLISH
PRINTING, PUBLISHING, AND ALLIED INDUSTRIES, EXCEPT
NEWSPAPERS (SIC 272-279)
- ~~347-369~~ CHEMICALS AND ALLIED PRODUCTS

- 347 INDUSTRIAL CHEMICALS
(SIC 281)
- 348 PLASTIC, SYNTH, RESIN
PLASTICS, SYNTHETICS AND RESINS, EXCEPT FIBERS (SIC
282, EXCEPT 2823 AND 2824)
- 349 SYNTHETIC FIBERS
(SIC 2823, 2824)
- 357 DRUGS AND MEDICINES
(SIC 283)
- 358 SOAPS AND COSMETICS
(SIC 284)
- 359 PAINTS, VARNISHES
PAINTS, VARNISHES AND RELATED PRODUCTS (SIC 285)
- 367 AGRICULTURAL CHEMICAL
AGRICULTURAL CHEMICALS (SIC 287)
- 368 MISC CHEMICALS
MISCELLANEOUS CHEMICALS (SIC 286, 289)
- 369 NOT SPECIF CHEMICALS
NOT SPECIFIED CHEMICALS AND ALLIED PRODUCTS
- ~~377-378~~ PETROLEUM AND COAL PRODUCTS
- 377 PETROLEUM REFINING
(SIC 291)
- 378 MISC PETRO, COAL PROD
MISCELLANEOUS PETROLEUM AND COAL PRODUCTS (SIC 295,
299)
- ~~379-387~~ RUBBER AND MISCELLANEOUS PLASTIC PRODUCTS
- 379 RUBBER PRODUCTS
(SIC 301-303, 306)
- 387 MISC PLASTIC PRODUCT
MISCELLANEOUS PLASTIC PRODUCTS (SIC 307)

~~388-397. LEATHER AND LEATHER PRODUCTS~~

- 388 TANNED LEATHER
TANNED, CURRIED, AND FINISHED LEATHER (SIC 311)
- 389 FOOTWEAR EXC RUBBER
FOOTWEAR, EXCEPT RUBBER (SIC 313, 314)
- 397 LEATHER EXC FOOTWEAR
LEATHER PRODUCTS, EXCEPT FOOTWEAR (SIC 312, 315-317, 319)
- 398 NOT SPECIFY MFG IND
NOT SPECIFIED MANUFACTURING INDUSTRIES
- 399 MFG NONDURABLE-ALLOC
MANUFACTURING, NONDURABLE GOODS-- ALLOCATED

~~407-429. TRANSPORTATION, COMMUNICATIONS, AND UTILITIES~~~~407-429. TRANSPORTATION~~

- 407 RAILROADS, RAIL EXPRS
RAILROADS AND RAILWAY EXPRESS SERVICE (SIC 40)
- 408 STREET RAILWAYS, BUS
STREET RAILWAYS AND BUS LINES (SIC 411, 413-415, 417)
- 409 TAXICAB SERVICE
(SIC 412)
- 417 TRUCKING SERVICE
(SIC 421, 423)
- 418 WAREHOUSE STORAGE
WAREHOUSING AND STORAGE (SIC 422)
- 419 WATER TRANSPORTATION
(SIC 44)

- 427 AIR TRANSPORTATION
(SIC 45)
- 428 PIPE LINES EXC GAS
PIPE LINES EXCEPT NATURAL GAS (SIC 46)
- 429 TRANSPORT SERVICE
SERVICE INCIDENTAL TO TRANSPORTATION (SIC 47)

~~447-449. COMMUNICATIONS~~

- 447 RADIO BROADCAST, TV
RADIO BROADCASTING AND TELEVISION (SIC 483)
- 448 TELEPHONE--WIRE, RADIO
TELEPHONE--WIRE AND RADIO (SIC 481)
- 449 TELEGRAPH, MISC COMM
TELEGRAPH AND MISCELLANEOUS COMMUNICATION SERVICES (SIC 482, 489)

~~467-479. UTILITIES AND SANITARY SERVICES~~

- 467 ELECTRIC LIGHT, POWER
ELECTRIC LIGHT AND POWER (SIC 491)
- 468 ELECTRIC-GAS UTIL
(SIC 493)
- 469 GAS, STEAM SUPPLY
GAS AND STEAM SUPPLY SYSTEMS (SIC 492, 496)
- 477 WATER SUPPLY
(SIC 494)
- 478 SANITARY SERVICES
(SIC 495)
- 479 OTHER, NOT SPECIF UTIL
OTHER AND NOT SPECIFIED UTILITIES (SIC 497)
- 499 TRANS, COMM, UTIL-ALLOC
TRANSPORTATION, COMMUNICATIONS, AND OTHER PUBLIC
UTILITIES--ALLOCATED

~~507-699~~ WHOLESALE AND RETAIL TRADE~~507-599~~ WHOLESALE TRADE

- 507 WHLSE MOTOR EQUIP
WHOLESALE MOTOR VEHICLES AND EQUIPMENT (SIC 501)
- 548 WHLSE DRUG, CHEM PROD
WHOLESALE DRUGS, CHEMICALS, AND ALLIED PRODUCTS (SIC 502)
- 509 WHLSE DRY GDS, APAREL
WHOLESALE DRY GOODS AND APPAREL (SIC 503)
- 527 WHOLESALE FOOD
WHOLESALE FOOD AND RELATED PRODUCTS (SIC 504)
- 528 WHLSE FARM PRODUCTS
WHOLESALE FARM PRODUCTS--RAW MATERIALS (SIC 505)
- 529 WHLSE ELECTRICAL GDS
WHOLESALE ELECTRICAL GOODS (SIC 506)
- 537 WHLSE HARDWARE, PLUMB
WHOLESALE HARDWARE, PLUMBING, AND HEATING SUPPLIES (SIC 507)
- 538 WHLSE NOT SPEC ELECT
WHOLESALE NOT SPECIFIED ELECTRICAL AND HARDWARE PRODUCTS
- 539 WHLSE MACH EQUIP, SUP
WHOLESALE MACHINERY EQUIPMENT AND SUPPLIES (SIC 508)
- 557 WHLSE METAL N.E.C.
WHOLESALE METALS AND MINERALS, NEC (SIC 5091)
- 558 WHLSE PETROL PRODUCT
WHOLESALE PETROLEUM PRODUCTS (SIC 5092)
- 559 WHLSE SCRAP, WSTE MAT
WHOLESALE SCRAP AND WASTE MATERIALS (SIC 5093)

- 567 WHLSE ALCOHOLIC BEV
WHOLESALE ALCOHOLIC BEVERAGES (SIC 5095)
- 568 WHLSE PAPER PRODUCTS
WHOLESALE PAPER AND ITS PRODUCTS (SIC 5096)
- 569 WHLSE LUMBER MATRL
WHOLESALE LUMBER AND CONSTRUCTION MATERIALS (SIC 5098)
- 587 WHOLESALERS N.E.C.
WHOLESALERS, N.E.C. (SIC 5094, 5097, 5099)
- 588 NOT SPECIF WHOLESALE
NOT SPECIFIED WHOLESALE TRADE
- 599 WHOLESALE-ALLOCATED
WHOLESALE TRADE--ALLOCATED

~~607-699~~ RETAIL TRADE

- 607 LUMBER BLDG MTL RETL
LUMBER AND BUILDING MATERIAL RETAILING (SIC 521-524)
- 608 HARDWARE, FARM EQUIP
HARDWARE AND FARM EQUIPMENT STORES (SIC 525)
- 609 DEPT, MAIL ORDER ESTB
DEPARTMENT AND MAIL ORDER ESTABLISHMENT (SIC 531, 532)
- 617 LTD PRICE VARIETY
LIMITED PRICE VARIETY STORE (SIC 533)
- 618 VENDNG MACH OPERATOR
VENDING MACHINE OPERATORS (SIC 534)
- 619 DIRECT SELLING ESTBL
DIRECT SELLING ESTABLISHMENT (SIC 535)
- 627 MISC GENERAL MERCHN
MISCELLANEOUS GENERAL MERCHANDISE STORES (SIC 539)
- 628 GROCERY STORES
(SIC 541)
- 629 DAIRY PRODUCTS STORE
(SIC 545)

- 689 RETAIL FLORISTS
(SIC 5992)
- 697 MISC RETAIL STORES
MISCELLANEOUS RETAIL STORES (SIC 593-595, 599 EXCEPT
5992)
- 698 NOT SPECIFIED RETAIL
NOT SPECIFIED RETAIL TRADE
- 699 RETAIL TRADE-ALLOC
RETAIL TRADE--ALLOCATED

707-719. FINANCE, INSURANCE AND REAL ESTATE

- 707 BANKING
(SIC 60)
- 708 CREDIT AGENCIES
(SIC 61)
- 709 SECURITY, COMMODITY
SECURITY, COMMODITY BROKERAGE, AND INVESTMENT COMPANIES
(SIC 62, 67)
- 717 INSURANCE
(SIC 63, 64)
- 718 REAL ESTATE
REAL ESTATE, INCLUDING REAL ESTATE-INSURANCE-LAW
OFFICES (SIC 65, 66)
- 719 FINANCE, INSURANCE
FINANCE, INSURANCE, AND REAL ESTATE--ALLOCATED

727-737. BUSINESS AND REPAIR SERVICES

- 727 ADVERTISING
(SIC 731)
- 728 SERVICES DWELL, BLDGS
SERVICES TO DWELLINGS AND OTHER BUILDINGS (SIC 734)
- 729 COMMERCIAL R&D LABS
COMMERCIAL RESEARCH, DEVELOPMENT, AND TESTING LABS (SIC
7391, 7397)

- 737 EMPLOYMENT AGENCIES
EMPLOYMENT AND TEMPORARY HELP AGENCIES (SIC 736, 7398)
- 738 BUSINESS CONSULT SRV
BUSINESS MANAGEMENT AND CONSULTING SERVICES (SIC PART 7392)
- 739 COMPUTER PRGRM SRVC
COMPUTER PROGRAMMING SERVICES (SIC PRT 7392)
- 747 DETECTIVE, PROTECTIVE
DETECTIVE AND PROTECTIVE SERVICES (SIC 7393)
- 748 BUSINESS SERVICE NEC
BUSINESS SERVICES, N.E.C. (SIC 732, 733, 735, 7394, 7395, 7396, 7399)
- 749 AUTO SRV EXC REPAIR
AUTOMOBILE SERVICES EXCEPT REPAIR (SIC 751, 752, 754)
- 757 AUTO REPAIR
AUTOMOBILE REPAIR AND RELATED SERVICES (SIC 753)
- 758 ELECTRIC REPAIR SHOP
(SIC 762, 7694)
- 759 MISC REPAIR SERVICES
MISCELLANEOUS REPAIR SERVICES (SIC 763, 764, 769, EXCEPT 7694)
- 767 BUSINESS REPAIR-ALOC.
BUSINESS AND REPAIR SERVICES--ALLOCATED

769-799. PERSONAL SERVICES

- 769 PRIVATE HOUSEHOLDS
(SIC 88)
- 777 HOTELS AND MOTELS
(SIC 701)
- 778 LODGING PLACES
LODGING PLACES, EXCEPT HOTELS AND MOTELS (SIC 702, 703, 704)
- 779 LAUNDRY, CLEAN GARMENT
LAUNDRING, CLEANING, AND OTHER GARMENT SERVICES (SIC 721, 727)

- 787 BEAUTY SHOPS
(SIC 723)
- 788 BARBER SHOPS
(SIC 724)
- 789 SHOE REPAIR SHOPS
(SIC 725)
- 797 DRESSMAKING SHOPS
(PART SIC 729)
- 798 MISC PERSONAL SRV
MISCELLANEOUS PERSONAL SERVICE (SIC 722, 726, PART 729)
- 799 PERSONAL SRV-ALOCATD
PERSONAL SERVICE--ALLOCATED

807-817. ENTERTAINMENT AND RECREATION SERVICES

- 807 THEATERS, MOTION PIC
THEATERS AND MOTION PICTURES (SIC 78, 792)
- 808 BOWL ALLEY, BILLIARD
BOWLING ALLEYS, BILLIARD AND POOL PARLORS (SIC 793)
- 809 MISC ENTERTAINMENT
MISCELLANEOUS ENTERTAINMENT AND RECREATION SERVICES (SIC 791, 794)
- 817 ENTERTAINMENT-ALLOC
ENTERTAINMENT AND RECREATION SERVICES--ALLOCATED

828-899. PROFESSIONAL AND RELATED SERVICES

- 828 OFFICE OF PHYSICIAN
OFFICES OF PHYSICIANS (SIC 801, 803)
- 829 OFFICES OF DENTISTS
(SIC 802)
- 837 OFFICE, CHIROPRACTOR
OFFICES OF CHIROPRACTORS (SIC 804)
- 838 HOSPITALS
(SIC 806)

839 CONVALESCENT INST
CONVALESCENT INSTITUTION (SIC 8092)

847 OFFICES, HEALTH PRACT
OFFICES OF HEALTH PRACTITIONERS N.E.C. (PART SIC 8099)

848 HEALTH SERVICES NEC
HEALTH SERVICES, N.E.C. (SIC 807, PART 8099)

849 LEGAL SERVICES
(SIC 81)

857 ELEM, SECONDRY SCHOOL
ELEMENTARY AND SECONDARY SCHOOLS (SIC 821)

858 COLLEGE & UNIVERSITY
COLLEGES AND UNIVERSITIES (SIC 822)

859 LIBRARIES
(SIC 823)

867 EDUCATIONAL SERV NEC
EDUCATIONAL SERVICES, N.E.C. (SIC 824, 829)

868 NOT SPECIF EDUC SERV
NOT SPECIFIED EDUCATIONAL SERVICES

869 MUSEUM, ART GALLERY
MUSEUMS, ART GALLERIES, AND ZOOS (SIC 84)

877 RELIGIOUS ORGANIZATN
RELIGIOUS ORGANIZATIONS (SIC 866)

878 WELFARE SERVICES
WELFARE SERVICES (PART SIC 867)

879 RESIDENTIAL WELFARE
RESIDENTIAL WELFARE FACILITIES (PART SIC 867)

887 NONPROFIT MEMBERSHIP
NONPROFIT MEMBERSHIP ORGANIZATIONS (SIC 861-865, 869)

888 ENGINEER, ARCHITECT
ENGINEERING AND ARCHITECTURAL SERVICES (SIC 891)

889 ACCOUNTING, AUDITING
ACCOUNTING, AUDITING, AND BOOKKEEPING SERVICES (SIC 893)

897 MISC PROFESSIONL SRV
MISCELLANEOUS PROFESSIONAL AND RELATED SERVICES (SIC 892, 899)

899 PROF SERVICE--ALLOCAT
PROFESSIONAL AND RELATED SERVICES--ALLOCATED

907-947. PUBLIC ADMINISTRATION

907 POSTAL SERVICE
(PART SIC 9190)

917 FEDERAL PUBLIC ADMIN
FEDERAL PUBLIC ADMINISTRATION (SIC PART 9190, 9490)

927 STATE PUBLIC ADMIN
STATE PUBLIC ADMINISTRATION (SIC 9290)

937 LOCAL PUBLIC ADMIN
LOCAL PUBLIC ADMINISTRATION (SIC 9390)

947 PUBLIC ADMIN--ALLOC
PUBLIC ADMINISTRATION--ALLOCATED

997-999. WORKERS NOT CLASSIFIED BY INDUSTRY

997 UNEMPLOYED PERSONS
UNEMPLOYED PERSONS, LAST WORKED 1959 OR EARLIER (FOUND IN EXPERIENCED CIVILIAN LABOR FORCE UNIVERSE ONLY).

999 INDUSTRY NOT REPORTD

APPENDIX 2: OCCUPATION CODES

THE OCCUPATION CODES ARE FOR REFERENCE NUMBERS 30 AND 32; THE KIND OF WORK DONE BY THE RESPONDENT AT HIS OR HER LAST JOB, AND HIS OR HER USUAL OCCUPATION. THESE VARIABLES CONTAIN NUMEROUS UNDEFINED ALPHABETIC CODES, AND HAVE BEEN LEFT IN ALPHABETIC CHARACTER FORMAT UNTIL CODING QUESTIONS CAN BE RESOLVED.

001-199 PROFESSIONAL, TECHNICAL, AND KINDRED WORKERS

001 ACCOUNTANTS
 002 ARCHITECTS
 003 COMPUTER PROGRAMMERS
 004 COMPUTER SYSTEM ANAL
 COMPUTER SYSTEMS ANALYSTS
 005 COMPUTR SPECLIST NEC
 COMPUTER SPECIALISTS, N.E.C.
 006 AERONATICAL ENGINEER
 AERONATICAL AND ASTRONAUTICAL ENGINEERS
 010 CHEMICAL ENGINEERS
 011 CIVIL ENGINEERS
 012 ELECTRICAL ENGINEERS
 ELECTRICAL AND ELECTRONIC ENGINEERS
 013 INDUSTRIAL ENGINEERS
 014 MECHANICAL ENGINEERS
 015 METALURGICAL ENGINEER
 METALLURGICAL AND MATERIALS ENGINEERS
 020 MINING ENGINEERS
 021 PETROLEUM ENGINEERS

022 SALES ENGINEERS
 023 ENGINEERS, NEC
 024 FARM MANAGEMENT ADV
 FARM MANAGEMENT ADVISORS
 025 FORESTER, CONSERVTNST
 FORESTERS AND CONSERVATIONISTS
 026 HOME MANAGMT ADVISOR
 HOME MANAGEMENT ADVISORS
 030 JUDGES
 031 LAWYERS
 032 LIBRARIANS
 033 ARCHIVISTS, CURATORS
 ARCHIVISTS AND CURATORS
 034 ACTUARIES
 035 MATHEMATICIANS
 036 STATISTICIANS
 042 AGRICULTURL SCIENTST
 AGRICULTURAL SCIENTISTS
 043 ATMOSPHERIC SCIENTST
 ATMOSPHERIC AND SPACE SCIENTISTS
 044 BIOLOGICAL SCIENTIST
 BIOLOGICAL SCIENTISTS
 045 CHEMISTS
 051 GEOLOGISTS
 052 MARINE SCIENTISTS
 053 PHYSICIST, ASTRONOMER
 PHYSICISTS AND ASTRONOMERS
 054 LIFE, PHYSICAL SCIENC
 LIFE AND PHYSICAL SCIENTISTS, N.E.C.

055 OPERATIONS RESEARCH
OPERATIONS AND SYSTEMS RESEARCHERS AND ANALYSTS

056 PRSNL, LABOR RELATION
PERSONNEL AND LABOR RELATIONS WORKERS

061 CHIROPRACTORS

062 DENTISTS

063 OPTOMETRISTS

064 PHARMACISTS

065 PHYSICIAN, OSTEOPATH
PHYSICIANS, MEDICAL AND OSTEOPATHIC

071 PODIATRISTS

072 VETERINARIANS

073 HEALTH PRACTITNR NEC
HEALTH PRACTITIONERS, N.E.C.

074 DIETITIANS

075 REGISTERED NURSES

076 THERAPISTS

080 CLINICAL LAB TECH
CLINICAL LABORATORY TECHNOLOGISTS AND TECHNICIANS

081 DENTAL HYGIENISTS

082 HEALTH RECORD TECH
HEALTH RECORD TECHNOLOGIST AND TECHNICIANS

083 RADIOLOGIC TECHNICN
RADIOLOGIC TECHNOLOGISTS AND TECHNICIANS

084 THERAPY ASSISTANTS

085 HEALTH TECHNOLOGISTS
HEALTH TECHNOLOGISTS AND TECHNICIANS, N.E.C.

086 CLERGYMEN

090 RELIGIOUS WORKER NEC
RELIGIOUS WORKERS, N.E.C.

091 ECONOMISTS

092 POLITICAL SCIENTISTS

093 PSYCHOLOGISTS

094 SOCIOLOGISTS

095 URBAN, REGION PLANNER
URBAN AND REGIONAL PLANNERS

096 SOCIAL SCIENTIST NEC
SOCIAL SCIENTISTS, N.E.C.

100 SOCIAL WORKERS

101 RECREATION WORKERS

102 AGRICULTURE TEACHERS

003 EARTH, SPACE TEACHER
ATMOSPHERIC, EARTH, MARINE, AND SPACE TEACHERS

104 BIOLOGY TEACHERS

105 CHEMISTRY TEACHERS

110 PHYSICS TEACHERS

111 ENGINEERING TEACHERS

112 MATHEMATICS TEACHERS

113 HEALTH SPEC TEACHERS
HEALTH SPECIALTIES TEACHERS

114 PSYCHOLOGY TEACHERS

115 BUSINESS TEACHERS
BUSINESS AND COMMERCE TEACHERS

116 ECONOMICS TEACHERS

120 HISTORY TEACHERS

121 SOCIOLOGY TEACHERS

122 SOCIAL SCI TEACH NEC
SOCIAL SCIENCE TEACHERS, N.E.C.

- 123 ART, DRAMA, MUSC TEACH
ART, DRAMA, AND MUSIC TEACHERS
- 124 COACHES, PE TEACHERS
COACHES AND PHYSICAL EDUCATION TEACHERS
- 125 EDUCATION TEACHERS
- 126 ENGLISH TEACHERS
- 130 FOREIGN LANG TEACHER
FOREIGN LANGUAGE TEACHERS
- 131 HOME ECONOMICS TEACH
HOME ECONOMICS TEACHERS
- 132 LAW TEACHERS
- 133 THEOLOGY TEACHERS
- 134 TRADE, INDUSTRL TEACH
TRADE, INDUSTRIAL, AND TECHNICAL TEACHERS
- 135 MISC TEACHERS, UNIV
MISCELLANEOUS TEACHERS, COLLEGE AND UNIVERSITY
- 140 UNIV TEACH NOT SPECF
TEACHERS, COLLEGE AND UNIVERSITY, SUBJECT NOT SPECIFIED
- 141 ADULT ED TEACHERS
ADULT EDUCATION TEACHERS
- 142 ELEMENTARY TEACHERS
ELEMENTARY SCHOOL TEACHERS
- 143 KINDERGARTEN TEACHER
PREKINDERGARTEN AND KINDERGARTEN TEACHERS
- 144 SECONDARY TEACHERS
SECONDARY SCHOOL TEACHERS
- 145 TEACHER EXC UNIV NEC
TEACHERS, EXCEPT COLLEGE AND UNIVERSITY, N.E.C.
- 150 AGRICULTURE, BIO TECH
AGRICULTURE AND BIOLOGICAL TECHNICIANS, EXCEPT HEALTH
- 151 CHEMICAL TECHNICIANS

- 152 DRAFTSMEN
- 153 ELECTRICAL ENG TECH
ELECTRICAL AND ELECTRONIC ENGINEERING TECHNICIANS
- 154 INDUSTRIAL ENG TECH
INDUSTRIAL ENGINEERING TECHNICIANS
- 155 MECHANICAL ENG TECH
MECHANICAL ENGINEERING TECHNICIANS
- 156 MATHEMATICAL TECH
MATHEMATICAL TECHNICIANS
- 161 SURVEYORS
- 162 ENGINR SCI TECH NEC
ENGINEERING AND SCIENCE TECHNICIANS, N.E.C.
- 163 AIRPLANE PILOTS
- 164 AIR TRAFFIC CONTROLR
AIR TRAFFIC CONTROLLERS
- 165 EMBALMERS
- 170 FLIGHT ENGINEERS
- 171 RADIO OPERATORS
- 172 TOOL PROGRAMMER
TOOL PROGRAMMERS, NUMERICAL CONTROL
- 173 TECHNICIANS, NEC
- 174 VOCATIONAL, ED COUNSL
VOCATIONAL AND EDUCATIONAL COUNSELORS
- 175 ACTORS
- 180 ATHLETE, KINDRED WRKR
ATHLETES AND KINDRED WORKERS
- 181 AUTHORS
- 182 DANCERS
- 183 DESIGNERS

- 184 EDITORS & REPORTERS
- 185 MUSICIANS, COMPOSERS
MUSICIANS AND COMPOSERS
- 190 PAINTERS & SCULPTORS
- 191 PHOTOGRAPHERS
- 192 PUBLIC RELATIONS
PUBLIC RELATIONS AND PUBLICITY WRITERS
- 193 RADIO, TV ANNOUNCERS
RADIO AND TELEVISION ANNOUNCERS
- 194 WRITER, ARTIST, NEC
WRITERS, ARTISTS, AND ENTERTAINERS, N.E.C.
- 195 RESEARCH NOT SPECIFD
RESEARCH WORKERS, NOT SPECIFIED
- 196 PROFESNL, TECHN-ALLOC
PROFESSIONAL, TECHNICAL, AND KINDRED WORKERS--ALLOCATED

201-246. MANAGERS AND ADMINISTRATORS, EXCEPT FARM

- 201 LOCAL PUB ADM FINANC
ASSESSORS, CONTROLLERS, AND TREASURERS; LOCAL PUBLIC
ADMINISTRATION
- 202 BANK OFCR, FINANC MGR
BANK OFFICERS AND FINANCIAL MANAGERS
- 203 BUYER, FARM PRODUCTS
BUYERS AND SHIPPERS, FARM PRODUCTS
- 205 BUYER, WHLSE, RETAIL
BUYERS, WHOLESALE AND RETAIL TRADE
- 210 CREDIT MEN
- 211 FUNERAL DIRECTOR
- 212 HEALTH ADMINISTRATOR
- 213 CONST INSP, PUB ADMIN
CONSTRUCTION INSPECTORS; PUBLIC ADMINISTRATION

- 215 OTHR INSPECT, PUB ADM
INSPECTORS, EXCEPT CONSTRUCTION; PUBLIC ADMINISTRATION
- 216 MANAGER & SUPER BLDG
MANAGERS AND SUPERINTENDENTS, BUILDING
- 220 OFFICE MANAGERS, NEC
OFFICE MANAGERS, N.E.C.
- 221 SHIP OFFICERS, PILOT
OFFICERS, PILOTS, AND PURSERS; SHIP
- 222 PUBLIC ADM, NEC
OFFICIALS AND ADMINISTRATORS; PUBLIC ADMINISTRATION,
N.E.C.
- 223 OFFICIALS OF UNIONS
OFFICIALS OF LODGES, SOCIETIES, AND UNIONS
- 224 POSTMASTR, MAIL SUPR
POSTMASTERS AND MAIL SUPERINTENDENTS
- 225 PURCHASING AGENT, NEC
PURCHASING AGENTS AND BUYERS, N.E.C.
- 226 RAILROAD CONDUCTORS
- 230 RESTRAURANT, BAR MGR
RESTAURANT, CAFETERIA, AND BAR MANAGERS
- 231 SALES MGR, RETAIL
SALES MANAGERS AND DEPARTMENT HEADS, RETAIL TRADE
- 233 SALES MGR EXC RETAIL
SALES MANAGERS, EXCEPT RETAIL TRADE
- 235 SCHOOL ADMIN, COLLEGE
SCHOOL ADMINISTRATORS, COLLEGE
- 240 SCHOOL ADM, ELEM SEC
SCHOOL ADMINISTRATORS, ELEMENTARY AND SECONDARY
- 245 MANAGER & ADMIN, NEC
MANAGERS AND ADMINISTRATORS, N.E.C.
- 246 MANGR EXC FARM-ALLOC
MANAGERS AND ADMINISTRATORS, EXCEPT FARM--ALLOCATED

240-296. SALES WORKERS

- 260 AD AGENT & SALESMAN
ADVERTISING AGENTS AND SALESMEN
- 261 AUCTIONEERS
- 262 DEMONSTRATORS
- 264 HUCKSTERS & PEDDLERS
- 265 INSURANCE AGENT
INSURANCE AGENTS, BROKERS, AND UNDERWRITERS
- 266 NEWSBOYS
- 270 REAL ESTATE BROKERS
REAL ESTATE AGENTS AND BROKERS
- 271 STOCK & BOND SALESMAN
STOCK AND BOND SALESMEN
- 280 SALESMEN, CLERKS-NEC
SALESMEN AND SALES CLERKS, N.E.C.
- 281 SALES REP, MANUFACTR
SALES REPRESENTATIVES, MANUFACTURING INDUSTRIES
- 282 SALES REP, WHLSE
SALES REPRESENTATIVES WHOLESALE TRADE
- 283 SALES CLERKS, RETAIL
SALES CLERKS, RETAIL TRADE
- 284 SALESMEN, RETAIL
SALESMEN, RETAIL TRADE
- 285 SALES, SERV & CONSTR
SALESMEN OF SERVICES AND CONSTRUCTION
- 296 SALES WORKERS-ALLOC
SALES WORKERS--ALLOCATED

~~301-326~~ CLERICAL AND KINDRED WORKERS

- 301 BANK TELLERS
- 303 BILLING CLERKS

- 305 BOOKKEEPERS
- 310 CASHIERS
- 311 CLERICAL ASSISTANTS
CLERICAL ASSISTANTS, SOCIAL WELFARE
- 312 CLERICAL SUPERV, NEC
CLERICAL SUPERVISION, N.E.C.
- 313 BILL COLLECTOR
COLLECTORS, BILL AND ACCOUNT
- 314 COUNTR CLERK, NONFOOD
COUNTER CLERKS, EXCEPT FOOD
- 315 DISPATCHER, VEHICLE
DISPATCHERS AND STARTERS, VEHICLE
- 320 ENUMERATOR, INTERVWER
ENUMERATORS AND INTERVIEWERS
- 321 INVESTIGATOR-NEC
ESTIMATORS AND INVESTIGATORS, N.E.C.
- 323 EXPEDITER
EXPEDITERS AND PRODUCTION CONTROLLERS
- 325 FILE CLERKS
- 326 INSURANCE ADJUSTERS
INSURANCE ADJUSTERS, EXAMINERS, AND INVESTIGATORS
- 330 LIBRARY ATTENDANTS
LIBRARY ATTENDANTS AND ASSISTANTS
- 331 MAIL CARRIERS, P.O.
MAIL CARRIERS, POST OFFICE
- 332 MAIL HANDLER, EXC PO
MAIL HANDLERS, EXCEPT POST OFFICE
- 333 MESSENGER, OFFICE BOY
MESSENGERS AND OFFICE BOYS
- 334 METER READERS, UTIL
METER READERS, UTILITIES
- 341 BOOKKEEPING MACH OPER
BOOKKEEPING AND BILLING MACHINE OPERATORS

342 CALCULATING MACH OPER
CALCULATING MACHINE OPERATORS

343 COMPUTER EQUIP OPER
COMPUTER AND PERIPHERAL EQUIPMENT OPERATORS

344 DUPLICATING MACH OPER
DUPLICATING MACHINE OPERATORS

345 KEY PUNCH OPERATORS

350 TABULATING MACH OPER
TABULATING MACHINE OPERATORS

355 OFFICE MACH OPER NEC
OFFICE MACHINE OPERATORS, N.E.C.

360 PAYROLL, TIMEKPG CLERK
PAYROLL AND TIMEKEEPING CLERKS

361 POSTAL CLERKS

362 PROOFREADERS

363 REAL ESTATE APPRAISER
REAL ESTATE APPRAISERS

364 RECEPTIONISTS

370 SECRETARIES, LEGAL

371 SECRETARIES, MEDICAL

372 SECRETARIES, NEC

374 SHIPPING, RECEIV CLERK
SHIPPING AND RECEIVING CLERKS

375 STATISTICAL CLERKS

376 STENOGRAPHERS

381 STOCK CLERK, STOREKPR
STOCK CLERKS AND STOREKEEPERS

382 TEACH AID EXC MONITR
TEACHER AIDES, EXCEPT SCHOOL MONITORS

383 TELEGRAPH MESSENGERS

384 TELEGRAPH OPERATORS

385 TELEPHONE OPERATORS

390 TICKET, EXPRESS AGENT
TICKET, STATION, AND EXPRESS AGENTS

391 TYPISTS

392 WEIGHERS

394 MISC CLERICAL WORKER
MISCELLANEOUS CLERICAL WORKERS

395 NOT SPECIF CLERICAL
NOT SPECIFIED CLERICAL WORKERS

396 CLERICAL WORKR-ALLOC
CLERICAL AND KINDRED WORKERS--ALLOCATED

~~401-586~~ GRAEISMEN AND KINDRED WORKERS

401 AUTO ACCESSRY INSTAL
AUTOMOBILE ACCESSORIES INSTALLERS

492 BAKERS

403 BLACKSMITHS

404 BOILERMAKERS

405 BOOKBINDERS

410 BRICK & STONEMASONS
BRICKMASONS AND STONEMASONS

411 BRICKMASON APPRENTIC
BRICKMASON AND STONEMASON APPRENTICES

412 BULLDOZER OPERATORS

413 CABINETMAKERS

415 CARPENTERS

416 CARPENTER APPRENTICE
CARPENTER APPRENTICES

- 420 CARPET INSTALLERS
- 421 CEMENT, CONCR FT FINISH
CEMENT AND CONCRETE FINISHERS
- 422 COMPOSITOR & TYPESET
COMPOSITORS AND TYPESETTERS
- 423 PRINT TRADES APPRENT
PRINTING TRADES APPRENTICES, EXCEPT PRESSMEN
- 424 CRANEMEN, DERRICKMEN
CRANEMEN, DERRICKMEN, AND HOISTMEN
- 425 DECORATOR, WINDOW DR
DECORATORS AND WINDOW DRESSERS
- 426 DENTAL LAB TECHNICNS
DENTAL LABORATORY TECHNICIANS
- 430 ELECTRICIANS
- 431 ELECTRICIAN APPRENT
ELECTRICIAN APPRENTICES
- 433 ELECTRIC POWER LINMN
ELECTRIC POWER LINEMEN AND CABLEMEN
- 434 ELECTROTYPERS
ELECTROTYPERS AND STEREOTYPERS
- 435 ENGRAVERS EXC PHOTO
ENGRAVERS, EXCEPT PHOTOENGRAVERS
- 436 GRADE, ROAD MACH OPER
EXCAVATING, GRADING, AND ROAD MACHINE OPERATORS; EXCEPT
BULLDOZER
- 440 FLOOR LAYER EXC TILE
FLOOR LAYERS, EXCEPT TILE SETTERS
- 441 FOREMEN, NEC
- 442 FORGEMEN & HAMMERMEN
- 443 FURNITURE, WOOD FINSH
FURNITURE AND WOOD FINISHERS
- 444 FURRIERS

- 445 GLAZIERS
- 446 HEAT TREAT, ANNEALER
HEAT TREATERS, ANNEALERS, AND TEMPERERS
- 450 INSPECT, GRADE LUMBER
INSPECTORS, SCALERS AND GRADERS; LOG AND LUMBER
- 452 INSPECTORS, NEC
- 453 JEWELER & WATCHMAKER
JEWELERS AND WATCHMAKERS
- 454 JOB, DIE SETTER METAL
JOB AND DIE SETTERS, METAL
- 455 LOCOMOTIVE ENGINEER
LOCOMOTIVE ENGINEERS
- 456 LOCOMOTIVE FIREMEN
- 461 MACHINISTS
- 462 MACHINIST APPRENTICE
MACHINIST APPRENTICES
- 470 AIR CONDITION REPAIR
AIR CONDITIONING, HEATING, AND REFRIGERATION MECHANICS
AND REPAIRMEN
- 471 AIRCRAFT MECHANICS
- 472 AUTO BODY REPAIRMEN
AUTOMOBILE BODY REPAIRMEN
- 473 AUTOMOBILE MECHANICS
- 474 AUTO MECHANIC APPREN
AUTOMOBILE MECHANIC APPRENTICES
- 475 DATA MACHINE REPAIR
DATA PROCESSING MACHINE REPAIRMEN
- 480 FARM IMLEMNT REPAIR
FARM IMPLEMENT REPAIR
- 481 HEAVY EQUIP MECHANIC
HEAVY EQUIPMENT MECHANICS, INCLUDING DIESEL

482 HOUSEHLD APPL INSTAL
HOUSEHOLD APPLIANCE AND ACCESSORY INSTALLERS AND
MECHANICS

483 LOOM FIXERS

484 OFFICE MACHIN REPAIR
OFFICE MACHINE REPAIR

485 RADIO, TV REPAIRMEN

486 RAIL,CAR SHOP REPAIR
RAILROAD AND CAR SHOP REPAIRMEN

491 MECHANIC,EXCEPT AUTO
MECHANIC, EXCEPT AUTO, APPRENTICES

492 MISC MECHANIC,REPAIR
MISCELLANEOUS MECHANICS AND REPAIRMEN

495 NOT SPECIF MECHANICS
NOT SPECIFIED MECHANICS AND REPAIRMEN

501 MILLERS, GRAIN,FLOUR
MILLERS; GRAIN, FLOUR, AND FEED

502 MILLWRIGHTS

503 MOLDERS, METAL

504 MOLDERS, APPRENTICE

505 MOVIE PROJECTIONIST
MOTION PICTURE PROJECTIONISTS

506 OPTICIAN, LENS GRIND
OPTICIANS, AND LENS GRINDERS AND POLISHERS

510 PAINTER
PAINTERS, CONSTRUCTION AND MAINTENANCE

511 PAINTER APPRENTICES

512 PAPERHANGERS

514 PATTERN, MODEL MAKER
PATTERN AND MODEL MAKERS, EXCEPT PAPER

515 PHOTOENGRAVER LITHOG
PHOTOENGRAVERS AND LITHOGRAPHERS

516 PIANO & ORGAN TUNERS
PIANO AND ORGAN TUNERS AND REPAIRMEN

520 PLASTERERS

521 PLASTERER APPRENTICE
PLASTERER APPRENTICES

522 PLUMBER,PIPE FITTERS
PLUMBERS AND PIPE FITTERS

523 PLUMBER APPRENTICES
PLUMBER AND PIPE FITTER APPRENTICES

525 POWER STATION OPERAT
POWER STATION OPERATORS

530 PRESSMN, PLATE PRINT
PRESSMEN AND PLATE PRINTERS, PRINTING

531 PRESSMAN APPRENTICES

533 ROLLER,FINISHR,METAL
ROLLERS AND FINISHERS, METAL

534 ROOFERS AND SLATERS

535 SHEETMETAL & TINSMTH
SHEETMETAL WORKERS AND TINSMITHS

536 SHEETMETAL APPRENTIC
SHEETMETAL APPRENTICES

540 SHIPFITTERS

542 SHOE REPAIRMEN

543 SIGN PAINTR,LETTERER
SIGN PAINTERS AND LETTERERS

545 STATIONARY ENGINEERS

546 STONECUTTER & CARVER
STONE CUTTERS AND STONE CARVERS

550 STRUCT METAL CRAFTMN
STRUCTURAL METAL CRAFTSMEN

551 TAILORS

- 552 TELEPHONE INSTALLERS
TELEPHONE INSTALLERS AND REPAIRMEN
- 554 TELEPHONE LINEMEN
TELEPHONE LINEMEN AND SPLICERS
- 560 TILE SETTERS
- 561 TOOL & DIE MAKERS
- 562 TOOL & DIE APRENTICE
TOOL AND DIE MAKERS APPRENTICES
- 563 UPHOLSTERERS
- 571 CRAFT APPRENTICE-NEC
SPECIFIED CRAFT APPRENTICES, N.E.C.
- 572 JNSPECIFIED APPRENT
NOT SPECIFIED APPRENTICES
- 575 CRAFTSMEN, NEC
CRAFTSMEN AND KINDRED WORKERS, N.E.C.
- 580 FORMER ARMED FORCES
FORMER MEMBERS OF THE ARMED FORCES
- 586 CRAFTSMEN-ALLOCATED
CRAFTSMEN AND KINDRED WORKERS--ALLOCATED

601-626 OPERATIVES, EXCEPT TRANSPORT

- 601 ASBESTOS, INSULATION
ASBESTOS AND INSULATION WORKERS
- 602 ASSEMBLERS
- 603 BLASTERS & POWDERMEN
- 604 BOTTLE & CAN OPERATR
BOTTLING AND CANNING OPERATIVES
- 605 SURVEY CHAIN/RODMEN
CHAINMEN, RODMEN, AND AXMEN; SURVEYING
- 610 CHECKER, EXAMINER MFG
CHECKERS, EXAMINERS, AND INSPECTORS; MANUFACTURING

- 611 CLOTHNG IRONR, PRESSR
CLOTHING IRONERS AND PRESSERS
- 612 CUTTING OPERATV, NEC
CUTTING OPERATIVES, N.E.C.
- 613 DRESSMAKR EXC FACTRY
DRESSMAKERS AND SEAMSTRESSES, EXCEPT FACTORY
- 614 DRILLERS, EARTH
- 615 DRY WALL INSTALLERS
DRY WALL INSTALLERS AND LATHERS
- 620 DYERS
- 621 FILER, POLISHR, SANDER
FILERS, POLISHERS, SANDERS, AND BUFFERS
- 622 FURNACEMN, SMELTERMN
FURANCEMEN, SMELTERMEN AND POURERS
- 623 GARAGE & GAS STATION
GARAGE WORKERS AND GAS STATION ATTENDANTS
- 624 GRADER & SORTER, MFG
GRADERS AND SORTERS, MANUFACTURING
- 625 PRODUCE GRADER, PACKR
PRODUCE GRADERS AND PACKERS, EXCEPT FACTORY AND FARM
- 626 HEATERS, METAL
- 630 LAUNDRY, DRY CLEANER
LAUNDRY AND DRY CLEANING OPERATIVES, N.E.C.
- 631 MEAT CUTTER EXC MFG
MEAT CUTTERS AND BUTCHERS, EXCEPT MANUFACTURING
- 633 MEAT CUTTERS, MFG
MEAT CUTTERS AND BUTCHERS, MANUFACTURING
- 634 MEAT WRAPPER, RETAIL
MEAT WRAPPERS, RETAIL TRADE
- 635 METAL PLATERS
- 636 MILLINERS

CONTINUED

1 OF 2

- 640 MINE OPERATIVES, NEC
- 641 MIXING OPERATIVES
- 642 JIL, GREASER EXC AUTO
OILERS AND GREASERS, EXCEPT AUTO
- 643 PACK EXC PRODUC, MEAT
PACKERS AND WRAPPERS, EXCEPT MEAT AND PRODUCE
- 644 PAINTER, MFG ARTICLE
PAINTERS, MANUFACTURED ARTICLES
- 645 PHOTOGRAPHIC PROCESS
PHOTOGRAPHIC PROCESS WORKERS
- 650 DRILL PRESS OPERATIV
DRILL PRESS OPERATIVES
- 651 GRINDING MACHINE OPR
GRINDING MACHINE OPERATIVES
- 652 LATHE & MILL MACHINE
LATHE AND MILLING MACHINE OPERATIVES
- 653 PRECISION MACH, NEC
PRECISION MACHINE OPERATIVES, N.E.C.
- 656 PUNCH, STAMP PRESS OP
PUNCH AND STAMPING PRESS OPERATIVES
- 660 RIVETERS & FASTENERS
- 661 SAILORS & DECKHANDS
- 662 SAWYERS
- 663 SEWERS & STITCHERS
- 664 SHOEMAKING MACH OPER
SHOEMAKING MACHINE OPERATIVES
- 665 SOLDERERS
- 666 STATIONARY FIREMEN
- 670 CARD, LAP & COMB OPR
CARDING, LAPPING, AND COMBING OPERATIVES

- 671 KNITTER, LOOPER, TOPPR
KNITTERS, LOOPERS, AND TOPPERS
- 672 SPINNER, TWISTR, WINDR
SPINNERS, TWISTERS, AND WINDERS
- 673 WEAVERS
- 674 TEXTILE OPER, NEC
- 680 WELDERS, FLAME-CUTTER
WELDERS AND FLAME-CUTTERS
- 681 WINDING OPER, NEC
WINDING OPERATIVES, N.E.C.
- 690 MACH OPR, MISC SPECF
MACHINE OPERATIVES, MISCELLANEOUS SPECIFIED
- 692 MACHIN OPR NOT SPECF
MACHINE OPERATIVES, NOT SPECIFIED
- 694 MISC OPERATIVES
MISCELLANEOUS OPERATIVES
- 695 NOT SPEC OPERATIVES
- 696 OPR EXC TRANSP-ALLOC
OPERATIVES, EXCEPT TRANSPORT--ALLOCATED

701-726. TRANSPORT EQUIPMENT OPERATIVES

- 701 BOATMEN & CANALMEN
- 703 BUS DRIVERS
- 704 CONDUCTOR & MOTORMEN
CONDUCTORS AND MOTORMEN, URBAN RAIL TRANSIT
- 705 DELIVERYMN & ROUTEMN
DELIVERYMEN AND ROUTEMEN
- 706 FORK LIFT, TOW MOTOR
FORK LIFT AND TOW MOTOR OPERATIVES
- 710 MINE, FACTRY MOTORMEN
MOTORMEN; MINE, FACTORY, LOGGING CAMP, ETC.

- 711 PARKING ATTENDANTS
- 712 RAILROAD BRAKEMEN
- 713 RAILROAD SWITCHMEN
- 714 CAB DRIVER, CHAUFFEUR
TAXI CAB DRIVERS AND CHAUFFEURS
- 715 TRUCK DRIVERS
- 726 TRANSPRT EQUIP-ALLOC
TRANSPORT EQUIPMENT OPERATIVES--ALLOCATED

740-796. LABORERS, EXCEPT FARM

- 740 ANIMAL CARE EXC FARM
ANIMAL CARETAKERS, EXCEPT FARM
- 750 CARPENTERS HELPERS
- 751 CONST EXC CARPNT HLP
CONSTRUCTION LABORERS, EXCEPT CARPENTERS' HELPERS
- 752 FISHERMN & OYSTERMEN
FISHERMEN AND OYSTERMEN
- 753 FREIGHT, MATL HANDLR
FREIGHT AND MATERIAL HANDLERS
- 754 GARBAGE COLLECTORS
- 755 GARDENER, GROUNDSPRS
GARDENERS AND GROUNDSKEEPERS, EXCEPT FARM
- 760 LONGSHORE, STEVEDORE
LONGSHOREMEN AND STEVEDORES
- 761 LUMBERMEN, RAFTSMEN
LUMBERMEN, RAFTSMEN, AND WOODCHOPPERS
- 762 STOCK HANDLERS
- 763 TEAMSTERS
- 764 VEHICLE, EQUIP CLEAN
VEHICLE WASHERS AND EQUIPMENT CLEANERS

- 770 WAREHOUSEMEN, NEC
- 780 MISC LABORERS
MISCELLANEOUS LABORERS
- 785 NOT SPECIF LABORERS
NOT SPECIFIED LABORERS
- 796 LABOR EXC FARM-ALLOC
LABORERS, EXCEPT FARM--ALLOCATED

801-806. FARMERS AND FARM MANAGERS

- 801 FARMERS
FARMERS (OWNERS AND TENANTS)
- 802 FARM MANAGERS
- 806 FARMERS & MGR-ALLOC
FARMERS AND FARM MANAGERS--ALLOCATED

821-846. FARM LABORERS AND FARM FOREMEN

- 821 FARM FOREMEN
- 822 FARM LABOR FOR WAGE
FARM LABORERS, WAGE WORKERS
- 823 FARM LABORER, UNPAID
FARM LABORERS, UNPAID FAMILY WORKERS
- 824 FARM LABOR, SELF-EMP
FARM SERVICE LABORERS, SELF-EMPLOYED
- 846 FARM LABORERS-ALLOC
FARM LABORERS AND FARM FOREMEN--ALLOCATED

901-976. SERVICE WORKERS, EXCEPT PRIVATE HOUSEHOLD

- 901 MAID EXC PRIVT HOUSE
CHAMBERMAIDS AND MAIDS, EXCEPT PRIVATE HOUSEHOLD
- 902 CLEANERS & CHARWOMEN

903 JANITORS & SEXTONS
 910 BARTENDERS
 911 BUSBOYS
 912 COOK EXC PRIVT HOUSE
 COOKS, EXCEPT PRIVATE HOUSEHOLD
 913 DISHWASHERS
 914 FOOD COUNTR, FOUNTAIN
 FOOD COUNTER AND FOUNTAIN WORKERS
 915 WAITERS
 916 FOOD SERVICE, NEC
 FOOD SERVICE WORKERS, N.E.C., EXCEPT PRIVATE HOUSEHOLD
 921 DENTAL ASSISTANTS
 922 HEALTH AID, EXC NURS
 HEALTH AIDES, EXCEPT NURSING
 923 HEALTH TRAINEES
 924 LAY MIDWIVES
 925 NURSES AIDE, ORDERLY
 NURSING AIDES, ORDERLIES, AND ATTENDANTS
 926 PRACTICAL NURSES
 931 AIRLINE STEWARDESSES
 932 RECREATION ATTENDANT
 ATTENDANTS, RECREATION AND AMUSEMENT
 933 PERSONAL SERVICE NEC
 ATTENDANTS, PERSONAL SERVICE, N.E.C.
 934 BAGGAGE PORTERS
 BAGGAGE PORTERS AND BELLHOPS
 935 BARBERS
 940 BOARDING HOUSEKEEPRS
 BOARDING AND LODGING HOUSEKEEPERS

941 BOOTBLACKS
 942 CHILD CARE EXC PRIVT
 CHILD CARE WORKERS, EXCEPT PRIVATE HOUSEHOLD
 943 ELEVATOR OPERATORS
 944 HAIRDRESSERS
 HAIRDRESSERS AND COSMETOLOGISTS
 945 PERSONAL SERV APPREN
 PERSONAL SERVICE APPRENTICES
 950 HOUSEKPR EXC PRIVT
 HOUSEKEEPERS, EXCEPT PRIVATE HOUSEHOLD
 952 SCHOOL MONITORS
 953 USHERS, RECREATION
 USHERS, RECREATION AND AMUSEMENT
 954 WELFARE SERVICE AID
 WELFARE SERVICE AIDES
 960 CROSS & BRIDGE GUARD
 CROSSING GUARDS AND BRIDGE TENDERS
 961 FIRE PROTECTION
 FIREMEN, FIRE PROTECTION
 962 GUARDS AND WATCHMEN
 963 MARSHALL & CONSTABLE
 MARSHALLS AND CONSTABLES
 964 POLICEMEN, DETECTIVES
 POLICEMEN AND DETECTIVES
 965 SHERIFFS & BAILIFFS
 976 SERV EXC PRIVT-ALLOC
 SERVICE WORKERS, EXCEPT PRIVATE HOUSEHOLD---ALLOCATED

 980-986. PRIVATE HOUSEHOLD WORKERS

 980 CHILD CARE PRIV HOUS
 CHILD CARE WORKERS, PRIVATE HOUSEHOLD

- 981 COOK, PRIV HOUSEHOLD
- 982 HOUSKPR PRIV HOUSHLD
HOUSEKEEPERS, PRIVATE HOUSEHOLD
- 983 LAUNDRY PRIV HOUSHLD
LAUNDRESSES, PRIVATE HOUSEHOLD
- 984 SERVANT PRIV HOUSHLD
MAIDS AND SERVANTS, PRIVATE HOUSEHOLD
- 986 PRIV HOUSEHOLD-ALLOC
PRIVATE HOUSEHOLD WORKERS--ALLOCATED

991-995. WORKERS NOT CLASSIFIABLE BY OCCUPATION

- 991 UNEMPLOYD SINCE 1959
UNEMPLOYED PERSONS, LAST WORKED 1959 OR EARLIER
- 995 OCCUPAT NOT REPORTED
OCCUPATION NOT REPORTED

END