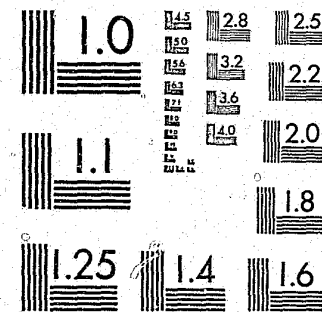


National Criminal Justice Reference Service

ncjrs

This microfiche was produced from documents received for inclusion in the NCJRS data base. Since NCJRS cannot exercise control over the physical condition of the documents submitted, the individual frame quality will vary. The resolution chart on this frame may be used to evaluate the document quality.



MICROCOPY RESOLUTION TEST CHART
NATIONAL BUREAU OF STANDARDS-1963-A

Microfilming procedures used to create this fiche comply with the standards set forth in 41CFR 101-11.504.

Points of view or opinions stated in this document are those of the author(s) and do not represent the official position or policies of the U. S. Department of Justice.

National Institute of Justice
United States Department of Justice
Washington, D. C. 20531

5/29/85

INTER-UNIVERSITY CONSORTIUM FOR
POLITICAL AND SOCIAL RESEARCH

JUVENILE DETENTION AND CORRECTIONAL
FACILITY CENSUS OF 1971

(ICPSR 7637)

ICPS

96140

Principal
Investigator

Law Enforcement
Assistance Administration

First ICPSR Edition, 1978

U.S. Department of Justice
National Institute of Justice

This document has been reproduced exactly as received from the person or organization originating it. Points of view or opinions stated in this document are those of the authors and do not necessarily represent the official position or policies of the National Institute of Justice.

Permission to reproduce this copyrighted material has been granted by

Public Domain/NIJ

U.S. Department of Justice

to the National Criminal Justice Reference Service (NCJRS).

Further reproduction outside of the NCJRS system requires permission of the copyright owner.

JUVENILE DETENTION AND CORRECTIONAL
FACILITY CENSUS OF 1971

Principal Investigator

Law Enforcement Assistance
Administration

Inter-university Consortium for Political and Social Research
P.O. Box 1248
Ann Arbor, Michigan 48106

First ICPSR Edition, 1978
October 1971

SUMMARY OF CONTENTS

Study Description	1
Sampling	1
Processing	2
Variable Table of Contents	3
Description of the Codebook	9
Codebook	11
Appendix 1: Definition of Terms	65
Appendix 2: Errors and Problems in the Data	68
Appendix 3: Counties by Name	70
Appendix 5: Osiris III Type 3 Dictionary Description	77

NCJRS

JAN 7 1985

ACQUISITIONS

STUDY DESCRIPTION

The study was designed by the Law Enforcement Assistance Administration and the Department of Health, Education, and Welfare, and conducted by the U.S. Bureau of the Census.

The census is of all juvenile detention and correctional facilities satisfying these conditions: operated by state or local governments and were functioning at least one month prior to June 30, 1971; had resident populations of at least 50 percent juveniles (the remainder may be "youthful offenders") facilities serving both youths awaiting court action and already adjudicated youths were surveyed. Juvenile centers that were part of adult jails were not included in the study because staff and budget figures could not be separately tabulated. An individual facility which was administratively dependent upon a parent institution was classified as a separate facility if it was located in a separate geographic area. The census includes 722 public juvenile facilities which are classified in one of the following six categories: 1) detention centers; 2) shelters; 3) reception or diagnostic centers; 4) training schools; 5) ranches, forestry camps and farms; 6) halfway houses and group homes.

The variables investigated includes: type of facility; level of government administering the facility; agency identifier; resident population by sex, age, range, detention status, offense; admissions and discharges; average length of stay; staffing and expenditures; age and capacity of facility; available programs and services.

The census sought to cover the period July 1, 1970, through June 30, 1971. Institutional population data were collected for September 30, 1970, December 31, 1970, March 31, 1971, and June 30, 1971. Numbers of staff members were reported as of June 30, 1971.

SAMPLING

In the summer of 1971 a mailing list of all juvenile detention and correctional facilities was prepared, using the National Criminal Justice Directory as a basic source. The list was subdivided by states and sent to the juvenile authorities in the respective states for review. The resulting list included 833 facilities, 111 of which were eliminated because of failure to meet the research design criterion (N-722). Questionnaires were then mailed to either the facility control agencies or directly to the

VARIABLE TABLE OF CONTENTS

Identification Variables

Sequence Number
State Number
Level of Government
County Number
City Number
Check Digit

Agency Information

Type of Criminal Justice Agency
Type of Juvenile Facility
Agency ID Number
Sex of Population Served
Number of Employees
Resident Population as of June 30, 1971

Type of Facility or Program

Primary Function of Facility
Level of Government Administering Facility
Sex of Residents Held by Facility

Movement Data Reporting Period

Reporting Period Starting Date-Month
Reporting Period Starting Date-Day
Reporting Period Starting Date-Year
Reporting Period Ending Date-Month
Reporting Period Ending Date-Day
Reporting Period Ending Date-Year

Population Movement into Long-term Facilities

First Court Commitments-Male
First Court Commitments-Female
Recommitments by Court for New Offense-Male
Recommitments by Court for New Offense-Female
Returned for Violation of Aftercare/Parole-Male
Returned for Violation of Aftercare/Parole-Female
Returned from Aftercare/Parole for other Reasons-Male
Returned from Aftercare/Parole for Other Reasons-Female
Transferred in from Another Facility-Male
Transferred in from Another Facility-Female
Other Admissions-Male
Other Admissions-Female

facilities. Those who failed to respond to the initial mailing were sent second and third questionnaire requests and telegrams were used as a final follow-up if necessary. Telephone contact was used extensively to clarify responses.

PROCESSING

Each juvenile facility is identified by the following variables: state, county and city numbers; level of government responsible for the facility; type of controlling agency and agency number. The labels were assigned by the U.S. Bureau of the Census. The records in the data file are sorted according to: state number, level of government administering the facility, county number, city number, type of facility, and agency identifier. In addition, a unique identification number is assigned to each case in the sorted file.

VARIABLE TABLE OF CONTENTS

Identification Variables

Sequence Number
State Number
Level of Government
County Number
City Number
Check Digit

Agency Information

Type of Criminal Justice Agency
Type of Juvenile Facility
Agency ID Number
Sex of Population Served
Number of Employees
Resident Population as of June 30, 1971

Type of Facility or Program

Primary Function of Facility
Level of Government Administering Facility
Sex of Residents Held by Facility

Movement Data Reporting Period

Reporting Period Starting Date-Month
Reporting Period Starting Date-Day
Reporting Period Starting Date-Year
Reporting Period Ending Date-Month
Reporting Period Ending Date-Day
Reporting Period Ending Date-Year

Population Movement into Long-term Facilities

First Court Commitments-Male
First Court Commitments-Female
Recommitments by Court for New Offense-Male
Recommitments by Court for New Offense-Female
Returned for Violation of Aftercare/Parole-Male
Returned for Violation of Aftercare/Parole-Female
Returned from Aftercare/Parole for other Reasons-Male
Returned from Aftercare/Parole for Other Reasons-Female
Transferred in from Another Facility-Male
Transferred in from Another Facility-Female
Other Admissions-Male
Other Admissions-Female

Population Movement out of Long-term Facilities

Discharged with No Further Agency Supervision-Male
 # Discharged with No Further Agency Supervision-Female
 # To Aftercare/Parole Program Operated by Facility-Male
 # To Aftercare/Parole Program Operated by Facility-Female
 # To Aftercare/Parole Program Operated by Other Agency-Male
 # To Aftercare/Parole Program Operated by Other Agency-Female
 # Transferred out to Another Facility-Male
 # Transferred out to Another Facility-Female
 # Other Release-Male
 # Other Release-Female

Population Movement in Short-term Facilities

Admitted to Custody-Male
 # Admitted to Custody-Female
 # Discharged or Remanded to Other Facilities-Male
 # Discharged or Remanded to Other Facilities-Female

Quarterly Population by Detention Status and Sex

Male Juveniles Adjudicated Delinquent-9/30/70
 # Female Juveniles Adjudicated Delinquent-9/30/70
 # Male Juveniles Held Pend Disposition by Court-9/30/70
 # Female Juveniles Held Pend Disposition by Court-9/30/70
 # Male Dependent and Neglected Children-9/30/70
 # Female Dependent and Neglected Children-9/30/70
 # Male Juveniles Awaiting Transfer-9/30/70
 # Female Juveniles Awaiting Transfer-9/30/70
 # Male Juveniles Adjudicated Delinquent-3/31/71
 # Female Juveniles Adjudicated Delinquent-3/31/71
 # Male Juveniles Held Pend Disposition by Court-3/31/71
 # Female Juveniles Held Pend Disposition by Court-3/31/71
 # Male Dependent and Neglected Children-3/31/71
 # Female Dependent and Neglected Children-3/31/71
 # Male Juveniles Awaiting Transfer-3/31/71
 # Female Juveniles Awaiting Transfer-3/31/71
 # Male Juveniles Adjudicated Delinquent-6/30/71
 # Female Juveniles Adjudicated Delinquent-6/30/71
 # Male Juveniles Held Pend Disposition by Court-6/30/71
 # Female Juveniles Held Pend Disposition by Court-6/30/71
 # Male Dependent and Neglected Children-6/30/71
 # Female Dependent and Neglected Children-6/30/71
 # Male Juveniles Awaiting Transfer-6/30/71
 # Female Juveniles Awaiting Transfer-6/30/71

Facility Population by Type of Offense

Adjudicated Delinquent of Felony Offenses-Male
 # Adjudicated Delinquent of Felony Offenses-Female
 # Adjudicated Delinquent of Misdemeanor Offenses-Male
 # Adjudicated Delinquent of Misdemeanor Offenses-Female

Adjudicated Delinquent of Drug Offenses-Male
 # Adjudicated Delinquent of Drug Offenses-Female
 # Adjudicated Delinquent of Status Offenses-Male
 # Adjudicated Delinquent of Status Offenses-Female

Age Range of Population

Youngest Age Currently Under Supervision-Male
 Youngest Age Currently Under Supervision-Female
 Oldest Age Currently Under Supervision-Male
 Oldest Age Currently Under Supervision-Female

Facility Characteristics

Capacity of Facility-Male
 Capacity of Facility-Female
 Adults Held Separately from Juveniles
 Adjudicated Held Separately from Pending Disposition
 Adjudicated Held Separately from Dependent/Neglected Children
 Pending Disposition Held Separately from Dependent Children
 Dependent Children Held Separately from Waiting Transfer

Length of Stay

Average Length of Stay in Months--Long-term Facilities
 Average Length of Stay in Days--Short-term Facilities

Facility Administrative Personnel

Number of Superintendents Full-Time
 Number of Superintendents Part-Time
 Number of Full-time Vacancies for Superintendent
 Number of Part-time Vacancies for Superintendent
 Superintendent under Civil Service
 Number of Assistant Superintendents Full-Time
 Number of Assistant Superintendents Part-time
 # of Full-time Vacancies for Asst. Superintendents
 # of Part-time Vacancies for Asst. Superintendents
 Assistant Superintendent Under Civil Service
 # of Other Administrative Personnel Full-Time
 # of Other Administrative Personnel Part-Time
 # of Other Full-Time Administrative Vacancies
 # of Other Part-Time Administrative Vacancies
 Other Administrative Personnel Under Civil Service

Facility Treatment and Educational Personnel

Number of Psychiatrists Full-Time
 Number of Psychiatrists Part-Time
 Number of Full-time Vacancies for Psychiatrists
 Number of Part-time vacancies for Psychiatrists
 Psychiatrists Under Civil Service
 Number of Psychologists Full-Time
 Number of Psychologists Part-Time

Number of Full-time Vacancies for Psychologists
 Number of Part-time Vacancies for Psychologists
 Psychologists Under Civil Service
 Number of Chaplains Full-time
 Number of Chaplains Part-time
 Number of Full-time Vacancies for Chaplains
 Number of Part-time Vacancies for Chaplains
 Chaplains Under Civil Service
 Number of Cottage Personnel Full-time
 Number of Cottage Personnel Part-time
 Number of Full-time Vacancies for Cottage Personnel
 Number of Part-time Vacancies for Cottage Personnel
 Cottage Personnel Under Civil Service
 # Acad Principals/Directors Vocational Train Full-time
 # Acad Principals/Directors Vocational Train Part-time
 # Full-time Vacancies Acad Principal/Dir Vocation Train
 # Part-time Vacancies Acad Principal/Dir Vocation Train
 Acad Principals/Directors Vocat Train Civil Service
 Number of Academic Teachers Full-time
 Number of Academic Teachers Part-time
 Number of Full-time Vacancies for Academic Teachers
 Number of Part-time Vacancies for Academic Teachers
 Academic Teachers Under Civil Service
 Number of Vocational Teachers Full-time
 Number of Vocational Teachers Part-time
 Number of Full-time Vacancies for Vocational Teachers
 Number of Part-time Vacancies for Vocational Teachers
 Vocational Teachers Under Civil Service
 Number of Social Workers Full-time
 Number of Social Workers Part-time
 Number of Full-time Vacancies for Social Workers
 Number of Part-time Vacancies for Social Workers
 Social Workers Under Civil Service
 Number of Librarians Full-time
 Number of Librarians Part-time
 Number of Full-time Vacancies for Librarians
 Number of Part-time Vacancies for Librarians
 Librarians Under Civil Service
 Number of Aftercare or Parole Workers Full-time
 Number of Aftercare or Parole Workers Part-time
 # of Full-time Vacancies for Aftercare/Parole Workers
 # of Part-time Vacancies for Aftercare/Parole Workers
 Aftercare and Parole Wrokers Under Civil Service
 Number of Recreation Workers Full-time
 Number of Recreation Workers Part-time
 Number of Full-time Vacancies for Recreation Workers
 Number of Part-time Vacancies for Recreation Workers
 Recreation Workers Under Civil Service
 Number of Physicians Full-time
 Number of Physicians Part-time
 Number of Full-time Vacancies for Physicians
 Number of Part-time Vacancies for Physicians
 Physicians Under Civil Service

Number of Registered Nurses Full-time
 Number of Registered Nurses Part-time
 Number of Full-time Vacancies for Registered Nurses
 Number of Part-time Vacancies for Registered Nurses
 Registered Nurses Under Civil Service
 Number of Dentists Full-time
 Number of Dentists Part-time
 Number of Full-time Vacancies for Dentists
 Number of Part-time Vacancies for Dentists
 Dentists Under Civil Service
 Number of Medical Aides Full-time
 Number of Medical Aides Part-time
 Number of Full-time Vacancies for Medical Aides
 Number of Part-time Vacancies for Medical Aides
 Medical Aides Under Civil Service
 Number of Classification Officers Full-time
 Number of Classification Officers Part-time
 # of Full-time Vacancies for Classification Officers
 # of Part-time Vacancies for Classification Officers
 Classification Officers Under Civil Service
 # of Other Treatment/Educational Personnel Full-time
 # of Other Treatment/Educational Personnel Part-time
 # of Full-time Vacancies Other Treatment/Education
 # of Part-time Vacancies Other Treatment/Education
 Other Treatment/Education Personnel Under Civil Service

Facility Operational and Maintenance Personnel

of Operational and Maintenance Personnel Full-time
 # of Operational and Maintenance Personnel Part-time
 # Full-time Vacancies Operational/Maintenance Personnel
 # Part-time Vacancies Operational/Maintenance Personnel
 Operations and Maintenance Personnel Under Civil Service

Turnover of Full-Time Employees During Reporting Period

Number of Administrative Personnel Hired
 Number of Administrative Personnel Separated
 # of Treatment and Educational Personnel Hired
 # of Treatment and Educational Personnel Separated
 # of Operational and Maintenance Personnel Hired
 # of Operational and Maintenance Personnel Separated
 Average Number of Full-Time Employees

Facility Costs

Starting Month of Reporting Period
 Starting Year of Reporting Period
 Ending Month of Reporting Period
 Ending Year of Reporting Period
 Capital Expenditures
 Salaries/Wages-Administrative Personnel
 Salaries/Wages-Treatment and Educational Personnel
 Salaries/Wages-Operational and Maintenance Personnel
 All Other Costs

Facility Construction

Year Construction Began on Facility
 Year Latest Construction or Renovation of Facility
 Cost of Planned Construction During Fiscal Year 1970-71

Availability of Services and Programs

Medical Facilities
 Competitive or Intramural Sports
 Radio
 Television
 Motion Pictures
 Library
 Gymnasium
 Athletic Field
 Other Recreational Facilities and Programs
 Academic Educational Services
 Vocational Services
 Individual Counseling
 Group Counseling
 Family and Juvenile Counseling
 Aftercare or Parole Program
 Aftercare or Parole Program Operated by Facility
 Aftercare/Parole Pgm Operated by State Parole Authority
 Aftercare/Parole Pgm Operated by Court Probation Dept
 Aftercare/Parole Pgm Operated by State Department
 Aftercare/Parole Pgm Operated by Other Agency
 Job Placement Program

Description of the Codebook

This section contains an explanation of typical entries in the codebook section which follows. The numbers in brackets do not appear in the codebook, but are references to the descriptions which follow the examples.

-
- | | |
|---|-----------------------|
| [1] V238 | [5] Reference: 0238 |
| [2] FAMILY/JUVEN COUNSELING ? | [6] File I.D.: JD1 |
| [3] Location: 537 Width: 1 | [7] Numeric character |
| [4] Missing data: GE 3 | |
| [8] VIII.D.1 (3) Does this facility routinely provide counseling involving the juvenile and his family? | |
| [9] 413 | [10] 1 Yes |
| 309 | 2 No |
- [12] Ref. No. 239-245. These variables apply to training schools, forestry camps, and similar facilities, only.
-

1. The OSIRIS variable number. The variable number is used as the SPSS variable name when an OSIRIS file is processed by SPSS.
2. The abbreviated (24 characters maximum) variable label used within the OSIRIS or SPSS systems to identify the variable for the user.
3. The starting location and width of this variable in the data as stored on a magnetic tape. This is the format information needed to read the data into other systems.
4. The designation of missing data. In the examples, code values for FAMILY/JUVEN COUNSELING? greater than or equal to 3 (GE 3) are missing data. Other notation, EQ meaning equal to or LE meaning less than or equal to, may also be used. Some analysis software packages (including the OSIRIS and SPSS packages) require that certain types of data which are usually excluded from analysis be designated as "missing data;" e.g., inappropriate, unascertained, unascertainable or ambiguous data categories. If need be, this designation can be changed by the user and the values used in a substantive manner.
5. The OSIRIS reference number. The L. E. A. A. Data Archive has adopted the OSIRIS III convention of assigning both a variable number and a reference number to each data item when a file is created. In the archive file, they are the same. Should the data be subsetted or re-arranged, the variable numbers change to reflect the order of the new data file, while the reference numbers remain to reflect the variable numbers in the codebook describing the archived data file.
6. The three column identification number unique to this data file.
7. The storage mode of the variable. All data in this file are in numeric character form.
8. The unabbreviated variable label or the text of the question from the survey form. The letters and numbers at the beginning of the text are the question numbers from the survey form. Although in many instances the actual question text has been paraphrased, an effort was made to use the same vocabulary and to retain the meaning on the original phrasing.

9. The frequency of occurrence of each code value.
10. The code values occurring in the data for a variable.
11. The textual definitions of the codes. The first 20 characters are a short label which is sometimes used to document the output of analysis programs. A longer description follows the short label when necessary.
12. Explanatory text referring to a group of variables which follows. These entries are used whenever a lengthy description applies to more than one or two variables or when some comment about a group of variables is needed.

JUVENILE DETENTION AND CORRECTIONAL
FACILITY CENSUS OF 1971

CODEBOOK

V1
SEQUENCE NUMBER
LOCATION: 1 WIDTH: 3
<NO MISSING DATA DEFINED>

REFERENCE: 0001
FILE I.D.: JDI
NUMERIC CHARACTER

THE VALUES RANGE FROM 1 TO 722 AND ARE IN ASCENDING ORDER. SEQUENCE NUMBERS WERE ASSIGNED TO THE FILE SORTED ON REF. NOS. 2,3,4,5,8 AND 9.

REF. NOS. 2-12. THESE VARIABLES ARE THE IDENTIFICATION VARIABLES ASSIGNED BY THE GOVERNMENTS DIVISION OF THE BUREAU OF THE CENSUS.

V2
STATE NUMBER
LOCATION: 4 WIDTH: 2
MISSING DATA: EQ 99

REFERENCE: 0002
FILE I.D.: JDI
NUMERIC CHARACTER

9	01 ALABAMA
3	02 ALASKA
9	03 ARIZONA
7	04 ARKANSAS
105	05 CALIFORNIA
9	06 COLORADO
6	07 CONNECTICUT
5	08 DELAWARE
10	09 DISTRICT OF COLUMBIA
38	10 FLORIDA
18	11 GEORGIA
3	12 HAWAII

JUVENILE DETENTION AND CORRECTIONAL
FACILITY CENSUS OF 1971

(V2, STATE NUMBER, CONTINUED)

3 13 IDAHO
32 14 ILLINOIS
9 15 INDIANA
7 16 IOWA
8 17 KANSAS
15 18 KENTUCKY
11 19 LOUISIANA
2 20 MAINE
14 21 MARYLAND
12 22 MASSACHUSETTS
38 23 MICHIGAN
9 24 MINNESOTA
4 25 MISSISSIPPI
24 26 MISSOURI
4 27 MONTANA
4 28 NEBRASKA
5 29 NEVADA
1 30 NEW HAMPSHIRE
23 31 NEW JERSEY
4 32 NEW MEXICO
50 33 NEW YORK
15 34 NORTH CAROLINA
3 35 NORTH DAKOTA
37 36 OHIO
6 37 OKLAHOMA

JUVENILE DETENTION AND CORRECTIONAL
FACILITY CENSUS OF 1971

(V2, STATE NUMBER, CONTINUED)

10 38 OREGON
33 39 PENNSYLVANIA
3 40 RHODE ISLAND
5 41 SOUTH CAROLINA
3 42 SOUTH DAKOTA
11 43 TENNESSEE
21 44 TEXAS
5 45 UTAH
1 46 VERMONT
20 47 VIRGINIA
28 48 WASHINGTON
8 49 WEST VIRGINIA
10 50 WISCONSIN
2 51 WYOMING

V3
LEVEL OF GOVERNMENT
LOCATION: 6 WIDTH: 1
MISSING DATA: EQ 9

REFERENCE: 0003
FILE I.D.: JD1
NUMERIC CHARACTER

LEVEL OF GOVERNMENT ADMINISTERING FACILITY.

318 0 STATE
363 1 COUNTY
41 2 CITY

REF. NOS. 4-5. IF THE FACILITY IS OPERATED BY A STATE, THEN COUNTY NUMBER IS THE NUMBER OF THE COUNTY IN WHICH THE FACILITY IS LOCATED AND CITY NUMBER IS EQUAL TO ZERO. IF THE FACILITY IS OPERATED BY A COUNTY, THEN CITY NUMBER IS THE COUNTY NUMBER AND HAS THE SAME VALUE AS COUNTY NUMBER. COUNTY NUMBERS ARE ASSIGNED SEQUENTIALLY WITHIN A STATE. IF THE FACILITY IS OPERATED BY A CITY, THEN CITY NUMBER IS A UNIQUE NUMBER ASSIGNED SEQUENTIALLY WITHIN THE COUNTY TO THE CITY. LEVEL OF GOVERNMENT (REF. NO. 3) DETERMINES THE CONTENTS OF CITY NUMBER.

JUVENILE DETENTION AND CORRECTIONAL
FACILITY CENSUS OF 1971

V4
COUNTY NUMBER
LOCATION: 7 WIDTH: 3
MISSING DATA: EQ 999

REFERENCE: 0004
FILE I.D.: JD1
NUMERIC CHARACTER

SEE APPENDIX 3 FOR A LIST OF COUNTY NAMES AND NUMBERS
APPEARING IN THIS FILE.

V5
CITY NUMBER
LOCATION: 10 WIDTH: 3
MISSING DATA: EQ 999

REFERENCE: 0005
FILE I.D.: JD1
NUMERIC CHARACTER

V6
CHECK DIGIT
LOCATION: 13 WIDTH: 1
<NO MISSING DATA DEFINED>

REFERENCE: 0006
FILE I.D.: JD1
NUMERIC CHARACTER

V7
AGENCY CODE
LOCATION: 14 WIDTH: 1
MISSING DATA: EQ 9

REFERENCE: 0007
FILE I.D.: JD1
NUMERIC CHARACTER

722 5 JUV DETENT/COR FACIL
JUVENILE DETENTION OR CORRECTIONAL FACILITY.

V8
TYPE OF FACILITY
LOCATION: 15 WIDTH: 1
MISSING DATA: EQ 9

REFERENCE: 0008
FILE I.D.: JD1
NUMERIC CHARACTER

305 1 DETENTION CENTER
17 2 SHELTER
16 3 RECEPTION/DIAGNOSTIC
RECEPTION OR DIAGNOSTIC CENTER.
191 4 TRAINING SCHOOL
115 5 RANCH/CAMP/FARM
RANCH, FORESTRY CAMP, OR FARM.
78 6 HALFWAY/GROUP HOME
HALFWAY HOUSE OR GROUP HOME.

JUVENILE DETENTION AND CORRECTIONAL
FACILITY CENSUS OF 1971

V9
AGENCY ID NUMBER
LOCATION: 16 WIDTH: 2
MISSING DATA: EQ 99

REFERENCE: 0009
FILE I.D.: JD1
NUMERIC CHARACTER

AN ID NUMBER TO UNIQUELY IDENTIFY A FACILITY OF A GIVEN
TYPE (REF. NO. 8) WITHIN A UNIT OF GOVERNMENT (REF. NOS. 2-
5).

V10
SEX OF POPULATION
LOCATION: 18 WIDTH: 1
MISSING DATA: EQ 9

REFERENCE: 0010
FILE I.D.: JD1
NUMERIC CHARACTER

278 1 MALE ONLY
86 2 FEMALE ONLY
358 3 FEMALE AND MALE

V11
OF FULL-TIME STAFF
LOCATION: 19 WIDTH: 1
MISSING DATA: EQ 9

REFERENCE: 0011
FILE I.D.: JD1
NUMERIC CHARACTER

FULL-TIME STAFF INCLUDES PAYROLL AND NONPAYROLL STAFF.

209 1 1-9 FULL-TIME STAFF
282 2 10-49 FULLTIME STAFF
108 3 50-99 FULLTIME STAFF
123 4 100+ FULL-TIME STAFF

V12
RESIDENT POP-6/30/71
LOCATION: 20 WIDTH: 1
MISSING DATA: EQ 0

REFERENCE: 0012
FILE I.D.: JD1
NUMERIC CHARACTER

RESIDENT POPULATION AS OF 6/30/71.

1 0 MISSING DATA
119 1 1-9 RESIDENTS
164 2 10-24 RESIDENTS

JUVENILE DETENTION AND CORRECTIONAL
FACILITY CENSUS OF 1971

(V12, RESIDENT POP-6/30/71, CONTINUED)

136 3 25-49 RESIDENTS
81 4 50-74 RESIDENTS
43 5 75-99 RESIDENTS
91 6 100-199 RESIDENTS
87 7 200+ RESIDENTS

V13
PRIMARY FUNCT OF FACILTY
LOCATION: 21 WIDTH: 1
MISSING DATA: EQ 9

REFERENCE: 0013
FILE I.D.: J01
NUMERIC CHARACTER

II.A. WHAT IS THE PRIMARY FUNCTION OF THIS FACILITY?

305 1 DETENTION CENTER
PROVIDES TEMPORARY CARE IN A PHYSICALLY
RESTRICTING FACILITY FOR JUVENILES IN CUSTODY
PENDING COURT DISPOSITION, AND OFTEN FOR
JUVENILES WHO ARE ADJUDICATED DELINQUENT OR ARE
AWAITING RETURN TO ANOTHER JURISDICTION.

17 2 SHELTER
PROVIDES TEMPORARY CARE, SIMILAR TO THAT OF A
DETENTION CENTER, IN A PHYSICALLY UNRESTRICTING
FACILITY.

16 3 RECEPTION/DIAGN CN R
RECEPTION OR DIAGNOSTIC CENTER. A FACILITY THAT
SCREENS JUVENILE COURT COMMITMENTS AND ASSIGNS
THEM TO APPROPRIATE TREATMENT FACILITIES.

191 4 TRAINING SCHOOL
A SPECIALIZED INSTITUTION SERVING DELINQUENT
JUVENILES COMMITTED DIRECTLY TO IT BY JUVENILE
COURTS OR PLACED IN IT BY AN AGENCY HAVING SUCH
AUTHORITY.

115 5 RANCH/FORS CAMP/FARM
RANCH, FORESTRY CAMP, FARM. A RESIDENTIAL
TREATMENT FACILITY FOR JUVENILES, WHOSE BEHAVIOR
DOES NOT NECESSITATE THE STRICT CONFINEMENT OF A
TRAINING SCHOOL OFTEN ALLOWING THEM GREATER
CONTACT WITH THE COMMUNITY.

78 6 HALFWAY HOUSE
HALFWAY HOUSE, GROUP HOME. A FACILITY WHERE
CHILDREN LIVE IN THE FACILITY BUT ARE PERMITTED
EXTENSIVE CONTACT WITH THE COMMUNITY SUCH AS
JOBS AND SCHOOLS.

JUVENILE DETENTION AND CORRECTIONAL
FACILITY CENSUS OF 1971

V14
LEVEL GOVT ADMIN FACILTY
LOCATION: 22 WIDTH: 1
MISSING DATA: EQ 9

REFERENCE: 0014
FILE I.D.: J01
NUMERIC CHARACTER

II.B. WHAT IS THE LEVEL OF GOVERNMENT ADMINISTERING
THIS FACILITY?

318 1 STATE
363 2 COUNTY
41 3 CITY

V15
SEX OF RESIDENTS
LOCATION: 23 WIDTH: 1
MISSING DATA: EQ 9

REFERENCE: 0015
FILE I.D.: J01
NUMERIC CHARACTER

II.C. WHAT IS THE SEX OF THE RESIDENTS ACCEPTED BY THIS
FACILITY?

278 1 MALES ONLY
86 2 FEMALES ONLY
358 3 BOTH MALES & FEMALES

REF. NOS. 16-21. THE REPORTING PERIOD IS FOR ADMISSIONS
AND DISCHARGES, STAFF TURNOVER, AND AVERAGE NUMBER OF FULL-
TIME EMPLOYEES ON DUTY, REF. NOS. 22-47 AND 206-212.

V16
REPORT PERIOD START-MO
LOCATION: 24 WIDTH: 2
MISSING DATA: EQ 99

REFERENCE: 0016
FILE I.D.: J01
NUMERIC CHARACTER

V17
REPORT PERIOD START-DAY
LOCATION: 26 WIDTH: 2
MISSING DATA: EQ 99

REFERENCE: 0017
FILE I.D.: J01
NUMERIC CHARACTER

V18
REPORT PERIOD START-YEAR
LOCATION: 28 WIDTH: 2
MISSING DATA: EQ 99

REFERENCE: 0018
FILE I.D.: J01
NUMERIC CHARACTER

JUVENILE DETENTION AND CORRECTIONAL
FACILITY CENSUS OF 1971

V19
REPORT PERIOD END-MONTH
LOCATION: 30 WIDTH: 2
MISSING DATA: EQ 99

REFERENCE: 0019
FILE I.D.: JD1
NUMERIC CHARACTER

V20
REPORT PERIOD END-DAY
LOCATION: 32 WIDTH: 2
MISSING DATA: EQ 99

REFERENCE: 0020
FILE I.D.: JD1
NUMERIC CHARACTER

V21
REPORT PERIOD END-YEAR
LOCATION: 34 WIDTH: 2
MISSING DATA: EQ 99

REFERENCE: 0021
FILE I.D.: JD1
NUMERIC CHARACTER

REF. NOS. 22-43. THESE VARIABLES APPLY TO TRAINING SCHOOLS, FORESTRY CAMPS, RANCHES, HALFWAY HOUSES, AND GROUP HOMES.

REF. NOS. 22-87. DATA FOR THESE VARIABLES INCLUDES NON-JUVENILES WHERE THEY WERE HELD IN THE SAME FACILITY AS JUVENILES. WARNING: SEE APPENDIX 2 FOR MORE INFORMATION ABOUT THIS VARIABLE.

V22
1ST COURT COMMITMNT-M
LOCATION: 36 WIDTH: 4
MISSING DATA: EQ -1

REFERENCE: 0022
FILE I.D.: JD1
NUMERIC CHARACTER

III.A.1. NUMBER OF MALES COMMITTED BY A COURT FOR A FIRST OFFENSE. WHERE APPLICABLE, FIRST PLACEMENTS RECEIVED THROUGH RECEPTION OR DIAGNOSTIC CENTERS ARE INCLUDED.

V23
1ST COURT COMMITMNT-F
LOCATION: 40 WIDTH: 3
MISSING DATA: EQ -1

REFERENCE: 0023
FILE I.D.: JD1
NUMERIC CHARACTER

III.A.1. NUMBER OF FEMALES COMMITTED BY A COURT FOR A FIRST OFFENSE. WHERE APPLICABLE, FIRST PLACEMENTS RECEIVED THROUGH RECEPTION OR DIAGNOSTIC CENTERS ARE INCLUDED.

JUVENILE DETENTION AND CORRECTIONAL
FACILITY CENSUS OF 1971

V24
RECOMMITTED BY COURT-M
LOCATION: 43 WIDTH: 3
MISSING DATA: EQ -1

REFERENCE: 0024
FILE I.D.: JD1
NUMERIC CHARACTER

III.A.2. NUMBER OF MALES RECOMMITTED BY A COURT FOR A NEW OFFENSE. INCLUDED ARE JUVENILES UNDER AFTERCARE OR PAROLE WHO COMMIT A NEW OFFENSE AND ARE RECOMMITTED.

V25
RECOMMITTED BY COURT-F
LOCATION: 46 WIDTH: 3
MISSING DATA: EQ -1

REFERENCE: 0025
FILE I.D.: JD1
NUMERIC CHARACTER

III.A.2. NUMBER OF FEMALES RECOMMITTED BY A COURT FOR A NEW OFFENSE. INCLUDED ARE JUVENILES UNDER AFTERCARE OR PAROLE WHO COMMIT A NEW OFFENSE AND ARE RECOMMITTED.

V26
#RETURN PAROLE VIOLATN-M
LOCATION: 49 WIDTH: 3
MISSING DATA: EQ -1

REFERENCE: 0026
FILE I.D.: JD1
NUMERIC CHARACTER

III.A.3. NUMBER OF MALES RETURNED TO THIS FACILITY FOR VIOLATION OF AFTERCARE OR PAROLE REGULATIONS.

V27
#RETURN PAROLE VIOLATN-F
LOCATION: 52 WIDTH: 3
MISSING DATA: EQ -1

REFERENCE: 0027
FILE I.D.: JD1
NUMERIC CHARACTER

III.A.3. NUMBER OF FEMALES RETURNED TO THIS FACILITY FOR VIOLATION OF AFTERCARE OR PAROLE REGULATIONS.

V28
RETURN PAROLE/NO VIO-M
LOCATION: 55 WIDTH: 3
MISSING DATA: EQ -1

REFERENCE: 0028
FILE I.D.: JD1
NUMERIC CHARACTER

III.A.4. NUMBER OF MALES RETURNED TO THIS FACILITY FROM AFTERCARE OR PAROLE PROGRAMS FOR OTHER REASONS. INCLUDED ARE THOSE JUVENILES WHO HAVE NOT VIOLATED AFTERCARE OR PAROLE REGULATIONS AND HAVE NOT COMMITTED A NEW DELINQUENT ACT.

JUVENILE DETENTION AND CORRECTIONAL
FACILITY CENSUS OF 1971

V29 REFERENCE: 0029
RETURN PAROLE/NO VIO-F FILE I.D.: JD1
LOCATION: 58 WIDTH: 2 NUMERIC CHARACTER
MISSING DATA: EQ -1

III.A.4. NUMBER OF FEMALES RETURNED TO THIS FACILITY FROM AFTERCARE OR PAROLE PROGRAMS FOR OTHER REASONS. INCLUDED ARE JUVENILES WHO HAVE NOT VIOLATED AFTERCARE OR PAROLE REGULATIONS AND HAVE NOT COMMITTED A NEW DELINQUENT ACT.

V30 REFERENCE: 0030
TRANSFERRED IN-MALE FILE I.D.: JD1
LOCATION: 60 WIDTH: 3 NUMERIC CHARACTER
MISSING DATA: EQ -1

III.A.5. NUMBER OF MALES TRANSFERRED INTO THIS FACILITY FROM ANOTHER FACILITY FOR DELINQUENT JUVENILES. INCLUDED ARE TRANSFERS IN FROM ANOTHER FACILITY EVEN THOUGH PROCESSED THROUGH RECEPTION OR DIAGNOSTIC CENTERS.

V31 REFERENCE: 0031
TRANSFERRED IN-FEMALE FILE I.D.: JD1
LOCATION: 63 WIDTH: 3 NUMERIC CHARACTER
MISSING DATA: EQ -1

III.A.5. NUMBER OF FEMALES TRANSFERRED INTO THIS FACILITY FROM ANOTHER FACILITY FOR DELINQUENT JUVENILES. INCLUDED ARE TRANSFERS IN FROM ANOTHER FACILITY EVEN THOUGH PROCESSED THROUGH RECEPTION OR DIAGNOSTIC CENTERS.

V32 REFERENCE: 0032
OTHER ADMISSIONS-MALE FILE I.D.: JD1
LOCATION: 66 WIDTH: 4 NUMERIC CHARACTER
MISSING DATA: EQ -1

III.A.6. NUMBER OF MALES ADMITTED FOR OTHER REASONS.

V33 REFERENCE: 0033
OTHER ADMISSIONS-FEM FILE I.D.: JD1
LOCATION: 70 WIDTH: 3 NUMERIC CHARACTER
MISSING DATA: EQ -1

III.A.6. NUMBER OF FEMALES ADMITTED FOR OTHER REASONS.

JUVENILE DETENTION AND CORRECTIONAL
FACILITY CENSUS OF 1971

V34 REFERENCE: 0034
#DISCHRGD NO SUPRVISON-M FILE I.D.: JD1
LOCATION: 73 WIDTH: 3 NUMERIC CHARACTER
MISSING DATA: EQ -1

III.B.1. NUMBER OF MALES DISCHARGED WITH NO FURTHER AGENCY SUPERVISION.

V35 REFERENCE: 0035
#DISCHRGD NO SUPRVISON-F FILE I.D.: JD1
LOCATION: 76 WIDTH: 3 NUMERIC CHARACTER
MISSING DATA: EQ -1

III.B.1 NUMBER OF FEMALES DISCHARGED WITH NO FURTHER AGENCY SUPERVISION.

V36 REFERENCE: 0036
TO FACILITY PAROLE-M FILE I.D.: JD1
LOCATION: 79 WIDTH: 4 NUMERIC CHARACTER
MISSING DATA: EQ -1

III.B.2. NUMBER OF MALES PLACED IN AN AFTERCARE OR PAROLE PROGRAM OPERATED BY THE FACILITY ITSELF.

V37 REFERENCE: 0037
TO FACILITY PAROLE-F FILE I.D.: JD1
LOCATION: 83 WIDTH: 3 NUMERIC CHARACTER
MISSING DATA: EQ -1

III.B.2. NUMBER OF FEMALES PLACED IN AN AFTERCARE OR PAROLE PROGRAM OPERATED BY THE FACILITY ITSELF.

V38 REFERENCE: 0038
#TO OTHR AGENCY PAROLE-M FILE I.D.: JD1
LOCATION: 86 WIDTH: 4 NUMERIC CHARACTER
MISSING DATA: EQ -1

III.B.3. NUMBER OF MALES PLACED IN AN AFTERCARE OR PAROLE PROGRAM OPERATED BY AN AGENCY OTHER THAN THIS FACILITY.

V39 REFERENCE: 0039
#TO OTHR AGENCY PAROLE-F FILE I.D.: JD1
LOCATION: 90 WIDTH: 3 NUMERIC CHARACTER
MISSING DATA: EQ -1

JUVENILE DETENTION AND CORRECTIONAL
FACILITY CENSUS OF 1971

(V39, #TO OTHR AGENCY PAROLE-F, CONTINUED)

III.B.3. NUMBER OF FEMALES PLACED IN AN AFTERCARE OR
PAROLE PROGRAM OPERATED BY AN AGENCY OTHER THAN THIS
FACILITY.

V40
TRANS TO OTHER INST-M
LOCATION: 93 WIDTH: 3
MISSING DATA: EQ -1

REFERENCE: 0040
FILE I.D.: JD1
NUMERIC CHARACTER

III.B.4. NUMBER OF MALES TRANSFERRED OUT TO ANOTHER
FACILITY FOR DELINQUENT JUVENILES. WHERE APPLICABLE,
TRANSFERS OUT TO RECEPTION OR DIAGNOSTIC CENTERS ARE
INCLUDED.

V41
TRANS TO OTHER INST-F
LOCATION: 96 WIDTH: 3
MISSING DATA: EQ -1

REFERENCE: 0041
FILE I.D.: JD1
NUMERIC CHARACTER

III.B.4. NUMBER OF FEMALES TRANSFERRED OUT TO ANOTHER
FACILITY FOR DELINQUENT JUVENILES. WHERE APPLICABLE,
TRANSFERS OUT TO RECEPTION OR DIAGNOSTIC CENTERS ARE
INCLUDED.

V42
OTHER RELEASES-MALE
LOCATION: 99 WIDTH: 4
MISSING DATA: EQ -1

REFERENCE: 0042
FILE I.D.: JD1
NUMERIC CHARACTER

III.B.5. NUMBER OF MALES RELEASED FOR OTHER REASONS.

V43
OTHER RELEASES-FEMALE
LOCATION: 103 WIDTH: 3
MISSING DATA: EQ -1

REFERENCE: 0043
FILE I.D.: JD1
NUMERIC CHARACTER

III.B.5. NUMBER OF FEMALES RELEASED FOR OTHER REASONS.

REF. NOS. 44-47. THESE VARIABLES APPLY TO SHORT-TERM
INSTITUTIONS ONLY, I.E., DETENTION CENTERS, SHELTERS, AND
RECEPTION OR DIAGNOSTIC CENTERS.

JUVENILE DETENTION AND CORRECTIONAL
FACILITY CENSUS OF 1971

V44
ADMITTED TO CUSTODY-M
LOCATION: 106 WIDTH: 5
MISSING DATA: EQ -1

REFERENCE: 0044
FILE I.D.: JD1
NUMERIC CHARACTER

III.C.1. NUMBER OF MALES ADMITTED TO CUSTODY.

V45
ADMITTED TO CUSTODY-F
LOCATION: 111 WIDTH: 4
MISSING DATA: EQ -1

REFERENCE: 0045
FILE I.D.: JD1
NUMERIC CHARACTER

III.C.1. NUMBER OF FEMALES ADMITTED TO CUSTODY.

V46
DISCHARGED/REMANDED-M
LOCATION: 115 WIDTH: 5
MISSING DATA: EQ -1

REFERENCE: 0046
FILE I.D.: JD1
NUMERIC CHARACTER

III.C.2. NUMBER OF MALES DISCHARGED OR REMANDED TO
OTHER COURT AGENCIES OR FACILITIES.

V47
DISCHARGED/REMANDED-F
LOCATION: 120 WIDTH: 4
MISSING DATA: EQ -1

REFERENCE: 0047
FILE I.D.: JD1
NUMERIC CHARACTER

III.C.2. NUMBER OF FEMALES DISCHARGED OR REMANDED TO
OTHER COURT AGENCIES OR FACILITIES.

V48
#ADJUD DELINQ,ETC 9/70-M
LOCATION: 124 WIDTH: 4
MISSING DATA: EQ -1

REFERENCE: 0048
FILE I.D.: JD1
NUMERIC CHARACTER

III.D.1. NUMBER OF MALE JUVENILES ADJUDICATED
DELINQUENT, DECLARED IN NEED OF SUPERVISION, OR VOLUNTARILY
ADMITTED IN THIS FACILITY ON 9/30/70.

V49
#ADJUD DELINQ,ETC 9/70-F
LOCATION: 128 WIDTH: 3
MISSING DATA: EQ -1

REFERENCE: 0049
FILE I.D.: JD1
NUMERIC CHARACTER

III.D.1. NUMBER OF FEMALE JUVENILES ADJUDICATED
DELINQUENT, DECLARED IN NEED OF SUPERVISION, OR VOLUNTARILY
ADMITTED IN THIS FACILITY ON 9/30/70.

JUVENILE DETENTION AND CORRECTIONAL
FACILITY CENSUS OF 1971

V50
#PEND DISPOSITION 9/70-M
LOCATION: 131 WIDTH: 3
MISSING DATA: EQ -1

REFERENCE: 0050
FILE I.D.: JD1
NUMERIC CHARACTER

III.D.1. NUMBER OF MALE JUVENILES HELD PENDING
DISPOSITION BY A COURT ON 9/30/70.

V51
#PEND DISPOSITION 9/70-F
LOCATION: 134 WIDTH: 3
MISSING DATA: EQ -1

REFERENCE: 0051
FILE I.D.: JD1
NUMERIC CHARACTER

III.D.1. NUMBER OF FEMALE JUVENILES HELD PENDING
DISPOSITION BY A COURT ON 9/30/70.

V52
#DEPEND/NEGLECTED 9/70-M
LOCATION: 137 WIDTH: 2
MISSING DATA: EQ -1

REFERENCE: 0052
FILE I.D.: JD1
NUMERIC CHARACTER

III.D.1. NUMBER OF DEPENDENT AND NEGLECTED MALE
CHILDREN HELD ON 9/30/70.

V53
#DEPEND/NEGLECTED 9/70-F
LOCATION: 139 WIDTH: 2
MISSING DATA: EQ -1

REFERENCE: 0053
FILE I.D.: JD1
NUMERIC CHARACTER

III.D.1. NUMBER OF DEPENDENT AND NEGLECTED FEMALE
CHILDREN HELD ON 9/30/70.

V54
#WAITING TRANSFER 9/70-M
LOCATION: 141 WIDTH: 2
MISSING DATA: EQ -1

REFERENCE: 0054
FILE I.D.: JD1
NUMERIC CHARACTER

III.D.1. NUMBER OF MALE JUVENILES AWAITING TRANSFER TO
ANOTHER JURISDICTION ON 9/30/70.

V55
#WAITING TRANSFER 9/70-F
LOCATION: 143 WIDTH: 2
MISSING DATA: EQ -1

REFERENCE: 0055
FILE I.D.: JD1
NUMERIC CHARACTER

III.D.1. NUMBER OF FEMALE JUVENILES AWAITING TRANSFER
TO ANOTHER JURISDICTION ON 9/30/70.

JUVENILE DETENTION AND CORRECTIONAL
FACILITY CENSUS OF 1971

V56
#ADJUD DELIN, ETC 12/70-M
LOCATION: 145 WIDTH: 4
MISSING DATA: EQ -1

REFERENCE: 0056
FILE I.D.: JD1
NUMERIC CHARACTER

III.D.2. NUMBER OF MALE JUVENILES ADJUDICATED
DELINQUENT, DECLARED IN NEED OF SUPERVISION, OR VOLUNTARILY
ADMITTED IN THIS FACILITY ON 12/31/70.

V57
#ADJUD DELIN, ETC 12/70-F
LOCATION: 149 WIDTH: 3
MISSING DATA: EQ -1

REFERENCE: 0057
FILE I.D.: JD1
NUMERIC CHARACTER

III.D.2. NUMBER OF FEMALE JUVENILES ADJUDICATED
DELINQUENT, DECLARED IN NEED OF SUPERVISION, OR VOLUNTARILY
ADMITTED IN THIS FACILITY ON 12/31/70.

V58
#PEND DISPOSITON 12/70-M
LOCATION: 152 WIDTH: 3
MISSING DATA: EQ -1

REFERENCE: 0058
FILE I.D.: JD1
NUMERIC CHARACTER

III.D.2. NUMBER OF MALES HELD PENDING DISPOSITION BY A
COURT ON 12/31/70.

V59
#PEND DISPOSITON 12/70-F
LOCATION: 155 WIDTH: 2
MISSING DATA: EQ -1

REFERENCE: 0059
FILE I.D.: JD1
NUMERIC CHARACTER

III.D.2. NUMBER OF FEMALES HELD PENDING DISPOSITION BY
A COURT ON 12/31/70.

V60
#DEPEND/NEGLECTD 12/70-M
LOCATION: 157 WIDTH: 2
MISSING DATA: EQ -1

REFERENCE: 0060
FILE I.D.: JD1
NUMERIC CHARACTER

III.D.2. NUMBER OF DEPENDENT AND NEGLECTED MALE
CHILDREN HELD ON 12/31/70.

V61
#DEPEND/NEGLECTD 12/70-F
LOCATION: 159 WIDTH: 2
MISSING DATA: EQ -1

REFERENCE: 0061
FILE I.D.: JD1
NUMERIC CHARACTER

JUVENILE DETENTION AND CORRECTIONAL
FACILITY CENSUS OF 1971

(V61, #DEPEND/NEGLECTD 12/70, CONTINUED)

III.D.2. NUMBER OF DEPENDENT AND NEGLECTED FEMALE
CHILDREN HELD ON 12/31/70.

V62
#WAITING TRANSFR 12/70-M
LOCATION: 161 WIDTH: 2
MISSING DATA: EQ -1

REFERENCE: 0062
FILE I.D.: JD1
NUMERIC CHARACTER

III.D.2. NUMBER OF MALES AWAITING TRANSFER TO ANOTHER
JURISDICTION ON 12/31/70.

V63
#WAITING TRANSFR 12/70-F
LOCATION: 163 WIDTH: 2
MISSING DATA: EQ -1

REFERENCE: 0063
FILE I.D.: JD1
NUMERIC CHARACTER

III.D.2. NUMBER OF FEMALES AWAITING TRANSFER TO ANOTHER
JURISDICTION ON 12/31/70.

V64
#ADJUD DELINQ,ETC 3/71-M
LOCATION: 165 WIDTH: 4
MISSING DATA: EQ -1

REFERENCE: 0064
FILE I.D.: JD1
NUMERIC CHARACTER

III.D.3. NUMBER OF MALE JUVENILES ADJUDICATED
DELINQUENT, DECLARED IN NEED OF SUPERVISION, OR VOLUNTARILY
ADMITTED IN THIS FACILITY ON 3/31/71.

V65
#ADJUD DELINQ,ETC 3/71-F
LOCATION: 169 WIDTH: 3
MISSING DATA: EQ -1

REFERENCE: 0065
FILE I.D.: JD1
NUMERIC CHARACTER

III.D.3. NUMBER OF FEMALE JUVENILES ADJUDICATED
DELINQUENT, DECLARED IN NEED OF SUPERVISION, OR VOLUNTARILY
ADMITTED IN THIS FACILITY ON 3/31/71.

V66
#PEND DISPOSITION 3/71-M
LOCATION: 172 WIDTH: 3
MISSING DATA: EQ -1

REFERENCE: 0066
FILE I.D.: JD1
NUMERIC CHARACTER

III.D.3. NUMBER OF MALE JUVENILES HELD PENDING
DISPOSITION BY A COURT ON 3/31/71.

JUVENILE DETENTION AND CORRECTIONAL
FACILITY CENSUS OF 1971

V67
#PEND DISPOSITION 3/71-F
LOCATION: 175 WIDTH: 3
MISSING DATA: EQ -1

REFERENCE: 0067
FILE I.D.: JD1
NUMERIC CHARACTER

III.D.3. NUMBER OF FEMALE JUVENILES HELD PENDING
DISPOSITION BY A COURT ON 3/31/71.

V68
#DEPEND/NEGLECTED 3/71-M
LOCATION: 178 WIDTH: 2
MISSING DATA: EQ -1

REFERENCE: 0068
FILE I.D.: JD1
NUMERIC CHARACTER

III.D.3. NUMBER OF DEPENDENT AND NEGLECTED MALE
CHILDREN HELD ON 3/31/71.

V69
#DEPEND/NEGLECTED 3/71-F
LOCATION: 180 WIDTH: 2
MISSING DATA: EQ -1

REFERENCE: 0069
FILE I.D.: JD1
NUMERIC CHARACTER

III.D.3. NUMBER OF DEPENDENT AND NEGLECTED FEMALE
CHILDREN HELD ON 3/31/71.

V70
#WAITING TRANSFER 3/71-M
LOCATION: 182 WIDTH: 2
MISSING DATA: EQ -1

REFERENCE: 0070
FILE I.D.: JD1
NUMERIC CHARACTER

III.D.3. NUMBER OF MALE JUVENILES AWAITING TRANSFER TO
ANOTHER JURISDICTION ON 3/31/71.

V71
#WAITING TRANSFER 3/71-F
LOCATION: 184 WIDTH: 2
MISSING DATA: EQ -1

REFERENCE: 0071
FILE I.D.: JD1
NUMERIC CHARACTER

III.D.3. NUMBER OF FEMALE JUVENILES AWAITING TRANSFER
TO ANOTHER JURISDICTION ON 3/31/71.

V72
#ADJUD DELINQ,ETC 6/71-M
LOCATION: 186 WIDTH: 4
MISSING DATA: EQ -1

REFERENCE: 0072
FILE I.D.: JD1
NUMERIC CHARACTER

III.D.4. NUMBER OF MALE JUVENILES ADJUDICATED
DELINQUENT, DECLARED IN NEED OF SUPERVISION, OR VOLUNTARILY
ADMITTED IN THIS FACILITY ON 6/30/71.

JUVENILE DETENTION AND CORRECTIONAL
FACILITY CENSUS OF 1971

V73
#ADJUD DELINQ, ETC 6/71-F
LOCATION: 190 WIDTH: 3
MISSING DATA: EQ -1

REFERENCE: 0073
FILE I.D.: J01
NUMERIC CHARACTER

III.D.3. NUMBER OF FEMALE JUVENILES ADJUDICATED
DELINQUENT, DECLARED IN NEED OF SUPERVISION, OR VOLUNTARILY
ADMITTED IN THIS FACILITY ON 6/30/71.

V74
#PEND DISPOSITION 6/71-M
LOCATION: 193 WIDTH: 3
MISSING DATA: EQ -1

REFERENCE: 0074
FILE I.D.: J01
NUMERIC CHARACTER

III.D.4. NUMBER OF MALE JUVENILES HELD PENDING
DISPOSITION BY A COURT ON 6/30/71.

V75
#PEND DISPOSITION 6/71-F
LOCATION: 196 WIDTH: 3
MISSING DATA: EQ -1

REFERENCE: 0075
FILE I.D.: J01
NUMERIC CHARACTER

III.D.4. NUMBER OF FEMALE JUVENILES HELD PENDING
DISPOSITION BY A COURT ON 6/30/71.

V76
#DEPEND/NEGLECTED 6/71-M
LOCATION: 199 WIDTH: 2
MISSING DATA: EQ -1

REFERENCE: 0076
FILE I.D.: J01
NUMERIC CHARACTER

III.D.4. NUMBER OF DEPENDENT AND NEGLECTED MALE
CHILDREN HELD ON 6/30/71.

V77
#DEPEND/NEGLECTED 6/71-F
LOCATION: 201 WIDTH: 2
MISSING DATA: EQ -1

REFERENCE: 0077
FILE I.D.: J01
NUMERIC CHARACTER

III.D.4. NUMBER OF DEPENDENT AND NEGLECTED FEMALE
CHILDREN HELD ON 6/30/71.

V78
#WAITING TRANSFER 6/71-M
LOCATION: 203 WIDTH: 2
MISSING DATA: EQ -1

REFERENCE: 0078
FILE I.D.: J01
NUMERIC CHARACTER

JUVENILE DETENTION AND CORRECTIONAL
FACILITY CENSUS OF 1971

(V78, #WAITING TRANSFER 6/71-, CONTINUED)

III.D.4. NUMBER OF MALE JUVENILES AWAITING TRANSFER TO
ANOTHER JURISDICTION ON 6/30/71.

V79
#WAITING TRANSFER 6/71-F
LOCATION: 205 WIDTH: 2
MISSING DATA: EQ -1

REFERENCE: 0079
FILE I.D.: J01
NUMERIC CHARACTER

III.D.4. NUMBER OF FEMALE JUVENILES AWAITING TRANSFER
TO ANOTHER JURISDICTION ON 6/30/71.

REF. NOS. 80-87. THE COUNTS IN THESE VARIABLES ARE OF
JUVENILES ADJUDICATED DELINQUENT, DECLARED IN NEED OF
SUPERVISION, OR WHO WERE ADMITTED VOLUNTARILY.

V80
#HELD FOR FELONY-MALE
LOCATION: 207 WIDTH: 3
MISSING DATA: EQ -1

REFERENCE: 0080
FILE I.D.: J01
NUMERIC CHARACTER

IV.C.1. NUMBER OF MALE JUVENILES ADJUDICATED DELINQUENT
HELD ON JUNE 30, 1971 FOR A FELONY, EXCEPT A DRUG OFFENSE.
FELONY OFFENSES ARE THOSE THAT WOULD BE FELONIES IF
COMMITTED BY AN ADULT.

V81
#HELD FOR FELONY-FEMALE
LOCATION: 210 WIDTH: 2
MISSING DATA: EQ -1

REFERENCE: 0081
FILE I.D.: J01
NUMERIC CHARACTER

IV.C.1. NUMBER OF FEMALE JUVENILES ADJUDICATED
DELINQUENT HELD ON JUNE 30, 1971 FOR A FELONY, EXCEPT A DRUG
OFFENSE. FELONY OFFENSES ARE THOSE THAT WOULD BE FELONIES IF
COMMITTED BY AN ADULT.

V82
#HELD FOR MISDEMEANOR-M
LOCATION: 212 WIDTH: 3
MISSING DATA: EQ -1

REFERENCE: 0082
FILE I.D.: J01
NUMERIC CHARACTER

IV.C.2. NUMBER OF MALE JUVENILES ADJUDICATED DELINQUENT
HELD ON JUNE 30, 1971 FOR A MISDEMEANOR, EXCEPT A DRUG
OFFENSE. MISDEMEANOR OFFENSES ARE THOSE THAT WOULD BE
MISDEMEANORS IF COMMITTED BY AN ADULT.

JUVENILE DETENTION AND CORRECTIONAL
FACILITY CENSUS OF 1971

V83
#HELD FOR MISDEMEANOR-F
LOCATION: 215 WIDTH: 3
MISSING DATA: EQ -1

REFERENCE: 0083
FILE I.D.: JD1
NUMERIC CHARACTER

IV.C.2. NUMBER OF FEMALE JUVENILES ADJUDICATED
DELINQUENT HELD ON JUNE 30, 1971 FOR A MISDEMEANOR, EXCEPT A
DRUG OFFENSES. MISDEMEANOR OFFENSES ARE THOSE THAT WOULD BE
MISDEMEANORS IF COMMITTED BY AN ADULT.

V84
#HELD FOR DRUG OFFENSE-M
LOCATION: 218 WIDTH: 3
MISSING DATA: EQ -1

REFERENCE: 0084
FILE I.D.: JD1
NUMERIC CHARACTER

IV.C.3. NUMBER OF MALE JUVENILES ADJUDICATED DELINQUENT
HELD ON JUNE 30, 1971 FOR DRUG OFFENSES.

V85
#HELD FOR DRUG OFFENSE-F
LOCATION: 221 WIDTH: 2
MISSING DATA: EQ -1

REFERENCE: 0085
FILE I.D.: JD1
NUMERIC CHARACTER

IV.C.3. NUMBER OF FEMALE JUVENILES ADJUDICATED
DELINQUENT HELD ON JUNE 30, 1971 FOR DRUG OFFENSES.

V86
#HELD STATUS OFFENSE-M
LOCATION: 223 WIDTH: 3
MISSING DATA: EQ -1

REFERENCE: 0086
FILE I.D.: JD1
NUMERIC CHARACTER

IV.C.4. NUMBER OF MALE JUVENILES ADJUDICATED DELINQUENT
HELD ON JUNE 30, 1971 FOR STATUS OFFENSES. STATUS OFFENSES
ARE THOSE THAT WOULD NOT BE CONSIDERED CRIMES IF COMMITTED
BY AN ADULT.

V87
#HELD STATUS OFFENSE-F
LOCATION: 226 WIDTH: 3
MISSING DATA: EQ -1

REFERENCE: 0087
FILE I.D.: JD1
NUMERIC CHARACTER

IV.C.4. NUMBER OF FEMALE JUVENILES ADJUDICATED
DELINQUENT HELD ON JUNE 30, 1971 FOR STATUS OFFENSES. STATUS
OFFENSES ARE THOSE THAT WOULD NOT BE CONSIDERED CRIMES IF
COMMITTED BY AN ADULT.

JUVENILE DETENTION AND CORRECTIONAL
FACILITY CENSUS OF 1971

V88
AGE OF YOUNGEST MALE
LOCATION: 229 WIDTH: 2
MISSING DATA: EQ 99

REFERENCE: 0088
FILE I.D.: JD1
NUMERIC CHARACTER

IV.A.1. AGE OF THE YOUNGEST MALE CURRENTLY UNDER
SUPERVISION (AT THE TIME THE QUESTIONNAIRE WAS COMPLETED.)

V89
AGE OF YOUNGEST FEMALE
LOCATION: 231 WIDTH: 2
MISSING DATA: EQ 99

REFERENCE: 0089
FILE I.D.: JD1
NUMERIC CHARACTER

IV.A.1. AGE OF THE YOUNGEST FEMALE CURRENTLY UNDER
SUPERVISION (AT THE TIME THE QUESTIONNAIRE WAS COMPLETED.)

V90
AGE OF OLDEST MALE
LOCATION: 233 WIDTH: 2
MISSING DATA: EQ 99

REFERENCE: 0090
FILE I.D.: JD1
NUMERIC CHARACTER

IV.A.2. AGE OF THE OLDEST MALE CURRENTLY UNDER
SUPERVISION. WARNING: SEE APPENDIX 2 FOR MORE INFORMATION
ABOUT THIS VARIABLE.

V91
AGE OF OLDEST FEMALE
LOCATION: 235 WIDTH: 2
MISSING DATA: EQ 99

REFERENCE: 0091
FILE I.D.: JD1
NUMERIC CHARACTER

IV.A.2. AGE OF THE OLDEST FEMALE CURRENTLY UNDER
SUPERVISION.

V92
FACILITY CAPACITY-MALE
LOCATION: 237 WIDTH: 4
MISSING DATA: EQ -1

REFERENCE: 0092
FILE I.D.: JD1
NUMERIC CHARACTER

III.E. THE NUMBER OF MALES THE FACILITY WAS DESIGNED TO
HOLD WITHOUT OVERCROWDING. OVERCROWDING WOULD INCLUDE DOUBLE
DECKED BUNKS WHERE FACILITY WAS DESIGNED FOR SINGLE BUNKS,
OR TEMPORARY USE OF A ROOM AS SLEEPING QUARTERS THAT WOULD
NOT ORDINARILY BE USED AS SUCH.

JUVENILE DETENTION AND CORRECTIONAL
FACILITY CENSUS OF 1971

V93
FACILITY CAPACITY-FEMALE
LOCATION: 241 WIDTH: 3
MISSING DATA: EQ -1

REFERENCE: 0093
FILE I.D.: JD1
NUMERIC CHARACTER

III.E. THE NUMBER OF FEMALES THE FACILITY WAS DESIGNED TO HOLD WITHOUT OVERCROWDING. OVERCROWDING WOULD INCLUDE DOUBLE DECKED BUNKS WHERE FACILITY WAS DESIGNED FOR SINGLE BUNKS, OR TEMPORARY USE OF A ROOM AS SLEEPING QUARTERS THAT WOULD NOT ORDINARILY BE USED AS SUCH.

V94
ADULT/JUVENILE SEPARATE?
LOCATION: 244 WIDTH: 1
MISSING DATA: EQ 3 OR GE 4

REFERENCE: 0094
FILE I.D.: JD1
NUMERIC CHARACTER

IV.B.1. ARE ADULTS HELD SEPARATELY FROM JUVENILES?

5 1 YES

2 2 NO

714 3 NOT APPLICABLE

V95
ADJUDICAT/PEND DISP SEP?
LOCATION: 245 WIDTH: 1
MISSING DATA: EQ 3 OR GE 4

REFERENCE: 0095
FILE I.D.: JD1
NUMERIC CHARACTER

IV.B.2. ARE JUVENILES IN THE ADJUDICATED DELINQUENT, ETC. CATEGORY HELD SEPARATELY FROM JUVENILES PENDING DISPOSITION BY A COURT?

26 1 YES

291 2 NO

405 3 NOT APPLICABLE

V96
ADJUD/DEPEND CHILD SEP?
LOCATION: 246 WIDTH: 1
MISSING DATA: EQ 3 OR GE 4

REFERENCE: 0096
FILE I.D.: JD1
NUMERIC CHARACTER

IV.B.3. ARE JUVENILES IN THE ADJUDICATED DELINQUENT, ETC. CATEGORY HELD SEPARATELY FROM DEPENDENT OR NEGLECTED CHILDREN?

JUVENILE DETENTION AND CORRECTIONAL
FACILITY CENSUS OF 1971

(V96, ADJUD/DEPEND CHILD SEP?, CONTINUED)

33 1 YES

124 2 NO

565 3 NOT APPLICABLE

V97
PEND DISP/DEP CHILD SEP?
LOCATION: 247 WIDTH: 1
MISSING DATA: EQ 3 OR GE 4

REFERENCE: 0097
FILE I.D.: JD1
NUMERIC CHARACTER

IV.B.4. ARE JUVENILES PENDING DISPOSITION BY A COURT HELD SEPARATELY FROM DEPENDENT OR NEGLECTED CHILDREN?

33 1 YES

117 2 NO

572 3 NOT APPLICABLE

V98
DPN CHILD/WAIT TRAN SEP?
LOCATION: 248 WIDTH: 1
MISSING DATA: EQ 3 OR GE 4

REFERENCE: 0098
FILE I.D.: JD1
NUMERIC CHARACTER

IV.B.5. ARE DEPENDENT OR NEGLECTED CHILDREN HELD SEPARATELY FROM ALLEGED JUVENILE DELINQUENTS AWAITING TRANSFER TO ANOTHER JURISDICTION?

35 1 YES

113 2 NO

574 3 NOT APPLICABLE

V99
AVERAGE STAY-MONTHS
LOCATION: 249 WIDTH: 2
MISSING DATA: EQ -1

REFERENCE: 0099
FILE I.D.: JD1
NUMERIC CHARACTER

IX.A. AVERAGE LENGTH OF STAY IN MONTHS FOR TRAINING SCHOOLS, FORESTRY CAMPS, RANCHES, HALFWAY HOUSES, AND GROUP HOMES.

JUVENILE DETENTION AND CORRECTIONAL
FACILITY CENSUS OF 1971

V100
AVERAGE STAY-DAYS
LOCATION: 251 WIDTH: 3
MISSING DATA: EQ -1

REFERENCE: 0100
FILE I.D.: J01
NUMERIC CHARACTER

IX.B. AVERAGE LENGTH OF STAY IN DAYS FOR DETENTION
CENTERS, SHELTERS, AND RECEPTION OR DIAGNOSTIC CENTERS.

REF. NOS. 101-205. RESPONDENTS WERE REQUESTED TO COUNT
THEIR STAFF AS FULL-TIME IF THEY REGULARLY WORKED 30 HOURS OR
MORE PER WEEK. STAFF WHO REGULARLY WORKED LESS THAN 30 HOURS
PER WEEK WERE TO BE COUNTED AS PART-TIME. ALL STAFF COUNTS
ARE AS OF JUNE 30, 1971 AND INCLUDE BOTH PAYROLL AND
NONPAYROLL STAFF. COMMUNITY VOLUNTEERS WERE NOT INCLUDED.

V101
#SUPERINTENDNT FULL-TIME
LOCATION: 254 WIDTH: 2
MISSING DATA: EQ -1

REFERENCE: 0101
FILE I.D.: J01
NUMERIC CHARACTER

V.A. NUMBER OF FULL-TIME SUPERINTENDENTS.

V102
#SUPERINTENDNT PART-TIME
LOCATION: 256 WIDTH: 2
MISSING DATA: EQ -1

REFERENCE: 0102
FILE I.D.: J01
NUMERIC CHARACTER

V.A. NUMBER OF PART-TIME SUPERINTENDENTS.

V103
SUPER VACNCY FULL-TIME
LOCATION: 258 WIDTH: 2
MISSING DATA: EQ -1

REFERENCE: 0103
FILE I.D.: J01
NUMERIC CHARACTER

V.A. NUMBER OF FULL-TIME VACANCIES FOR SUPERINTENDENTS.

V104
SUPER VACNCY PART-TIME
LOCATION: 260 WIDTH: 2
MISSING DATA: EQ -1

REFERENCE: 0104
FILE I.D.: J01
NUMERIC CHARACTER

V.A. NUMBER OF PART-TIME VACANCIES FOR SUPERINTENDENTS.

JUVENILE DETENTION AND CORRECTIONAL
FACILITY CENSUS OF 1971

V105
SUPRINTEND CIVL SERVICE?
LOCATION: 262 WIDTH: 1
MISSING DATA: EQ 8 OR GE 9

REFERENCE: 0105
FILE I.D.: J01
NUMERIC CHARACTER

V.A. WAS THE POSITION OF SUPERINTENDENT A CIVIL SERVICE
POSITION?

336 1 YES

330 2 NO

56 9 MISSING DATA

V106
#AST SUPERINTEND FUL-TIM
LOCATION: 263 WIDTH: 2
MISSING DATA: EQ -1

REFERENCE: 0106
FILE I.D.: J01
NUMERIC CHARACTER

V.A. NUMBER OF FULL-TIME ASSISTANT SUPERINTENDENTS.

V107
#AST SUPERINTEND PRT-TIM
LOCATION: 265 WIDTH: 2
MISSING DATA: EQ -1

REFERENCE: 0107
FILE I.D.: J01
NUMERIC CHARACTER

V.A. NUMBER OF PART-TIME ASSISTANT SUPERINTENDENTS.

V108
#AST SUPR VACNCY FUL-TIM
LOCATION: 267 WIDTH: 2
MISSING DATA: EQ -1

REFERENCE: 0108
FILE I.D.: J01
NUMERIC CHARACTER

V.A. NUMBER OF FULL-TIME VACANCIES FOR ASSISTANT
SUPERINTENDENTS.

V109
#AST SUPR VACNCY PRT-TIM
LOCATION: 269 WIDTH: 2
MISSING DATA: EQ -1

REFERENCE: 0109
FILE I.D.: J01
NUMERIC CHARACTER

V.A. NUMBER OF PART-TIME VACANCIES FOR ASSISTANT
SUPERINTENDENTS.

JUVENILE DETENTION AND CORRECTIONAL
FACILITY CENSUS OF 1971

V110
ASST SUPER CIVL SERVICE?
LOCATION: 271 WIDTH: 1
MISSING DATA: EQ 8 OR GE 9

REFERENCE: 0110
FILE I.D.: JD1
NUMERIC CHARACTER

V.A. WAS THE POSITION OF ASSISTANT SUPERINTENDENT A
CIVIL SERVICE POSITION?

251 1 YES
177 2 NO
1 8 UNDEFINED
293 9 MISSING DATA

REF. NOS. 111-115. INCLUDED UNDER "OTHER"
ADMINISTRATIVE STAFF ARE THOSE IN POSITIONS SUCH AS BUSINESS
MANAGER, PURCHASING AGENT, STENOGRAPHER, BOOKKEEPER,
ACCOUNTANT, SWITCHBOARD OPERATOR, CLERK, AND TYPIST.

V111
OTHER ADMIN FULL-TIME
LOCATION: 272 WIDTH: 2
MISSING DATA: EQ -1

REFERENCE: 0111
FILE I.D.: JD1
NUMERIC CHARACTER

V.A. NUMBER OF FULL-TIME OTHER ADMINISTRATIVE
EMPLOYEES.

V112
OTHER ADMIN PART-TIME
LOCATION: 274 WIDTH: 2
MISSING DATA: EQ -1

REFERENCE: 0112
FILE I.D.: JD1
NUMERIC CHARACTER

V.A. NUMBER OF PART-TIME OTHER ADMINISTRATIVE
EMPLOYEES.

V113
#OTHR ADM VACNCY FUL-TIM
LOCATION: 276 WIDTH: 2
MISSING DATA: EQ -1

REFERENCE: 0113
FILE I.D.: JD1
NUMERIC CHARACTER

V.A. NUMBER OF FULL-TIME VACANCIES FOR OTHER
ADMINISTRATIVE POSITIONS.

JUVENILE DETENTION AND CORRECTIONAL
FACILITY CENSUS OF 1971

V114
#OTHR ADM VACNCY PRT-TIM
LOCATION: 278 WIDTH: 2
MISSING DATA: EQ -1

REFERENCE: 0114
FILE I.D.: JD1
NUMERIC CHARACTER

V.A. NUMBER OF PART-TIME VACANCIES FOR OTHER
ADMINISTRATIVE POSITIONS.

V115
OTHER ADM CIVIL SERVICE?
LOCATION: 280 WIDTH: 1
MISSING DATA: EQ 8 OR GE 9

REFERENCE: 0115
FILE I.D.: JD1
NUMERIC CHARACTER

V.A. WERE THE OTHER ADMINISTRATIVE POSITIONS CIVIL
SERVICE POSITIONS?

315 1 YES
171 2 NO
236 9 MISSING DATA

V116
#PSYCHIATRISTS FULL-TIME
LOCATION: 281 WIDTH: 2
MISSING DATA: EQ -1

REFERENCE: 0116
FILE I.D.: JD1
NUMERIC CHARACTER

V.A. NUMBER OF FULL-TIME PSYCHIATRISTS.

V117
#PSYCHIATRISTS PART-TIME
LOCATION: 283 WIDTH: 2
MISSING DATA: EQ -1

REFERENCE: 0117
FILE I.D.: JD1
NUMERIC CHARACTER

V.A. NUMBER OF PART-TIME PSYCHIATRISTS.

V118
#PSYCHIAT VACNCY FUL-TIM
LOCATION: 285 WIDTH: 2
MISSING DATA: EQ -1

REFERENCE: 0118
FILE I.D.: JD1
NUMERIC CHARACTER

V.A. NUMBER OF FULL-TIME VACANCIES FOR PSYCHIATRISTS.

JUVENILE DETENTION AND CORRECTIONAL
FACILITY CENSUS OF 1971

V119
#PSYCHIAT VACNCY PRT-TIM
LOCATION: 287 WIDTH: 2
MISSING DATA: EQ -1

REFERENCE: 0119
FILE I.D.: JD1
NUMERIC CHARACTER

V.A. NUMBER OF PART-TIME VACANCIES FOR PSYCHIATRISTS.

V120
PSYCHIATRIST CIVIL SERV?
LOCATION: 289 WIDTH: 1
MISSING DATA: EQ 8 OR GE 9

REFERENCE: 0120
FILE I.D.: JD1
NUMERIC CHARACTER

V.A. WAS THE POSITION OF PSYCHIATRIST A CIVIL SERVICE POSITION?

50 1 YES

121 2 NO

551 9 MISSING DATA

V121
#PSYCHOLOGISTS FULL-TIME
LOCATION: 290 WIDTH: 2
MISSING DATA: EQ -1

REFERENCE: 0121
FILE I.D.: JD1
NUMERIC CHARACTER

V.A. NUMBER OF FULL-TIME PSYCHOLOGISTS.

V122
#PSYCHOLOGISTS PART-TIME
LOCATION: 292 WIDTH: 2
MISSING DATA: EQ -1

REFERENCE: 0122
FILE I.D.: JD1
NUMERIC CHARACTER

V.A. NUMBER OF PART-TIME PSYCHOLOGISTS.

V123
#PSYCHOL VACNCY FUL-TIM
LOCATION: 294 WIDTH: 2
MISSING DATA: EQ -1

REFERENCE: 0123
FILE I.D.: JD1
NUMERIC CHARACTER

V.A. NUMBER OF FULL-TIME VACANCIES FOR PSYCHOLOGISTS.

V124
#PSYCHOL VACNCY PRT-TIM
LOCATION: 296 WIDTH: 2
MISSING DATA: EQ -1

REFERENCE: 0124
FILE I.D.: JD1
NUMERIC CHARACTER

JUVENILE DETENTION AND CORRECTIONAL
FACILITY CENSUS OF 1971

(V124, #PSYCHOL VACANCY PRT-TIM, CONTINUED)

V.A. NUMBER OF PART-TIME VACANCIES FOR PSYCHOLOGISTS.

V125
PSYCHOLOGIST CIVIL SERV?
LOCATION: 298 WIDTH: 1
MISSING DATA: EQ 8 OR GE 9

REFERENCE: 0125
FILE I.D.: JD1
NUMERIC CHARACTER

V.A. WAS THE THE POSITION OF PSYCHOLOGIST A CIVIL SERVICE POSITION?

132 1 YES

128 2 NO

462 9 MISSING DATA

V126
CHAPLAINS FULL-TIME
LOCATION: 299 WIDTH: 2
MISSING DATA: EQ -1

REFERENCE: 0126
FILE I.D.: JD1
NUMERIC CHARACTER

V.A. NUMBER OF FULL-TIME CHAPLAINS.

V127
CHAPLAINS PART-TIME
LOCATION: 301 WIDTH: 2
MISSING DATA: EQ -1

REFERENCE: 0127
FILE I.D.: JD1
NUMERIC CHARACTER

V.A. NUMBER OF PART-TIME CHAPLAINS.

V128
#CHAPLAIN VACNCY FUL-TIM
LOCATION: 303 WIDTH: 2
MISSING DATA: EQ -1

REFERENCE: 0128
FILE I.D.: JD1
NUMERIC CHARACTER

V.A. NUMBER OF FULL-TIME VACANCIES FOR CHAPLAINS.

V129
#CHAPLAIN VACNCY PRT-TIM
LOCATION: 305 WIDTH: 2
MISSING DATA: EQ -1

REFERENCE: 0129
FILE I.D.: JD1
NUMERIC CHARACTER

V.A. NUMBER OF PART-TIME VACANCIES FOR CHAPLAINS.

JUVENILE DETENTION AND CORRECTIONAL
FACILITY CENSUS OF 1971

V130
#CHAPLAIN CIVIL SERVICE?
LOCATION: 307 WIDTH: 2
MISSING DATA: EQ 8 OR GE 9

REFERENCE: 0130
FILE I.D.: JDI
NUMERIC CHARACTER

V.A. WAS THE POSITION OF CHAPLAIN A CIVIL SERVICE
POSITION?

105 1 YES
178 2 NO
439 9 MISSING DATA

V131
#COTTAGE PERSONL FUL-TIM
LOCATION: 309 WIDTH: 3
MISSING DATA: EQ -1

REFERENCE: 0131
FILE I.D.: JDI
NUMERIC CHARACTER

V.A. NUMBER OF FULL-TIME COTTAGE PERSONNEL.

V132
#COTTAGE PERSONL PRT-TIM
LOCATION: 312 WIDTH: 2
MISSING DATA: EQ -1

REFERENCE: 0132
FILE I.D.: JDI
NUMERIC CHARACTER

V.A. NUMBER OF PART-TIME COTTAGE PERSONNEL.

V133
#COTTG PERSNL VAC FUL-TM
LOCATION: 314 WIDTH: 2
MISSING DATA: EQ -1

REFERENCE: 0133
FILE I.D.: JDI
NUMERIC CHARACTER

V.A. NUMBER OF FULL-TIME VACANCIES FOR COTTAGE
PERSONNEL.

V134
#COTTAG PRSNL VAC PRT-TM
LOCATION: 316 WIDTH: 2
MISSING DATA: EQ -1

REFERENCE: 0134
FILE I.D.: JDI
NUMERIC CHARACTER

V.A. NUMBER OF PART-TIME VACANCIES FOR COTTAGE
PERSONNEL.

JUVENILE DETENTION AND CORRECTIONAL
FACILITY CENSUS OF 1971

V135
COTTAG PRSNL CIVIL SERV?
LOCATION: 318 WIDTH: 1
MISSING DATA: EQ 8 OR GE 9

REFERENCE: 0135
FILE I.D.: JDI
NUMERIC CHARACTER

V.A. WERE COTTAGE PERSONNEL POSITIONS CIVIL SERVICE
POSITIONS?

331 1 YES
282 2 NO
109 9 MISSING DATA

V136
#ACAD PRINCIPALS FUL-TIM
LOCATION: 319 WIDTH: 2
MISSING DATA: EQ -1

REFERENCE: 0136
FILE I.D.: JDI
NUMERIC CHARACTER

V.A. NUMBER OF FULL-TIME ACADEMIC PRINCIPALS OR
DIRECTORS OF VOCATIONAL TRAINING.

V137
#ACAD PRINCIPALS PRT-TIM
LOCATION: 321 WIDTH: 2
MISSING DATA: EQ -1

REFERENCE: 0137
FILE I.D.: JDI
NUMERIC CHARACTER

V.A. NUMBER OF PART-TIME ACADEMIC PRINCIPALS OR
DIRECTORS OF VOCATIONAL TRAINING.

V138
#AC PRINCIPAL VAC FUL-TIM
LOCATION: 323 WIDTH: 2
MISSING DATA: EQ -1

REFERENCE: 0138
FILE I.D.: JDI
NUMERIC CHARACTER

V.A. NUMBER OF FULL-TIME VACANCIES FOR ACADEMIC
PRINCIPALS OR DIRECTORS OF VOCATIONAL TRAINING.

V139
#AC PRINCIPAL VAC PRT-TIM
LOCATION: 325 WIDTH: 2
MISSING DATA: EQ -1

REFERENCE: 0139
FILE I.D.: JDI
NUMERIC CHARACTER

V.A. NUMBER OF PART-TIME VACANCIES FOR ACADEMIC
PRINCIPALS OR DIRECTORS OF VOCATIONAL TRAINING.

JUVENILE DETENTION AND CORRECTIONAL
FACILITY CENSUS OF 1971

VI40
AC PRINCIPAL CIVIL SERV?
LOCATION: 327 WIDTH: 1
MISSING DATA: EQ 8 OR GE 9

REFERENCE: 0140
FILE I.D.: JD1
NUMERIC CHARACTER

V.A. WERE THE POSITIONS OF ACADEMIC PRINCIPAL OR
DIRECTOR OF VOCATIONAL TRAINING CIVIL SERVICE POSITIONS?

144 1 YES
141 2 NO
437 9 MISSING DATA

VI41
#ACAD TEACHERS FULL-TIME
LOCATION: 328 WIDTH: 2
MISSING DATA: EQ -1

REFERENCE: 0141
FILE I.D.: JD1
NUMERIC CHARACTER

V.A. NUMBER OF FULL-TIME ACADEMIC TEACHERS.

VI42
#ACAD TEACHERS PART-TIME
LOCATION: 330 WIDTH: 2
MISSING DATA: EQ -1

REFERENCE: 0142
FILE I.D.: JD1
NUMERIC CHARACTER

V.A. NUMBER OF PART-TIME ACADEMIC TEACHERS.

VI43
#AC TEACHER VACNCY FL-TM
LOCATION: 332 WIDTH: 2
MISSING DATA: EQ -1

REFERENCE: 0143
FILE I.D.: JD1
NUMERIC CHARACTER

V.A. NUMBER OF FULL-TIME VACANCIES FOR ACADEMIC
TEACHERS.

VI44
#AC TEACHER VACNCY PT-TM
LOCATION: 334 WIDTH: 2
MISSING DATA: EQ -1

REFERENCE: 0144
FILE I.D.: JD1
NUMERIC CHARACTER

V.A. NUMBER OF PART-TIME VACANCIES FOR ACADEMIC
TEACHERS.

JUVENILE DETENTION AND CORRECTIONAL
FACILITY CENSUS OF 1971

VI45
ACAD TEACHER CIVIL SERV?
LOCATION: 336 WIDTH: 1
MISSING DATA: EQ 8 OR GE 9

REFERENCE: 0145
FILE I.D.: JD1
NUMERIC CHARACTER

V.A. WAS THE POSITION OF ACADEMIC TEACHER A CIVIL
SERVICE POSITION?

214 1 YES
341 2 NO
167 9 MISSING DATA

VI46
#VOC TEACHERS FULL-TIME
LOCATION: 337 WIDTH: 2
MISSING DATA: EQ -1

REFERENCE: 0146
FILE I.D.: JD1
NUMERIC CHARACTER

V.A. NUMBER OF FULL-TIME VOCATIONAL TEACHERS.

VI47
#VOC TEACHERS PART-TIME
LOCATION: 339 WIDTH: 2
MISSING DATA: EQ -1

REFERENCE: 0147
FILE I.D.: JD1
NUMERIC CHARACTER

V.A. NUMBER OF PART-TIME VOCATIONAL TEACHERS.

VI48
#VOC TEACH VACNCY FUL-TM
LOCATION: 341 WIDTH: 2
MISSING DATA: EQ -1

REFERENCE: 0148
FILE I.D.: JD1
NUMERIC CHARACTER

V.A. NUMBER OF FULL-TIME VACANCIES FOR VOCATIONAL
TEACHERS.

VI49
#VOC TEACH VACNCY PRT-TM
LOCATION: 343 WIDTH: 2
MISSING DATA: EQ -1

REFERENCE: 0149
FILE I.D.: JD1
NUMERIC CHARACTER

V.A. NUMBER OF PART-TIME VACANCIES FOR VOCATIONAL
TEACHERS.

JUVENILE DETENTION AND CORRECTIONAL
FACILITY CENSUS OF 1971

V150
VOC TEACH CIVL SERVICE?
LOCATION: 345 WIDTH: 1
MISSING DATA: EQ 8 OR GE 9

REFERENCE: 0150
FILE I.D.: JD1
NUMERIC CHARACTER

V.A. WAS THE POSITION OF VOCATIONAL TEACHER A CIVIL
SERVICE POSITION?

135 1 YES
118 2 NO
1 8 UNDEFINED
468 9 MISSING DATA

V151
#SOCIAL WORKER FULL-TIME
LOCATION: 346 WIDTH: 2
MISSING DATA: EQ -1

REFERENCE: 0151
FILE I.D.: JD1
NUMERIC CHARACTER

V.A. NUMBER OF FULL-TIME SOCIAL WORKERS.

V152
#SOCIAL WORKER PART-TIME
LOCATION: 348 WIDTH: 2
MISSING DATA: EQ -1

REFERENCE: 0152
FILE I.D.: JD1
NUMERIC CHARACTER

V.A. NUMBER OF PART-TIME SOCIAL WORKERS.

V153
#SOC WORK VACNCY FUL-TIM
LOCATION: 350 WIDTH: 2
MISSING DATA: EQ -1

REFERENCE: 0153
FILE I.D.: JD1
NUMERIC CHARACTER

V.A. NUMBER OF FULL-TIME VACANCIES FOR SOCIAL WORKERS.

V154
#SOC WORK VACNCY PRT-TIM
LOCATION: 352 WIDTH: 2
MISSING DATA: EQ -1

REFERENCE: 0154
FILE I.D.: JD1
NUMERIC CHARACTER

V.A. NUMBER OF PART-TIME VACANCIES FOR SOCIAL WORKERS.

JUVENILE DETENTION AND CORRECTIONAL
FACILITY CENSUS OF 1971

V155
SOC WORKER CIVL SERVICE?
LOCATION: 354 WIDTH: 1
MISSING DATA: EQ 8 OR GE 9

REFERENCE: 0155
FILE I.D.: JD1
NUMERIC CHARACTER

V.A. WAS THE POSITION OF SOCIAL WORKER A CIVIL SERVICE
POSITION?

197 1 YES
120 2 NO
405 9 MISSING DATA

V156
LIBRARIANS FULL-TIME
LOCATION: 355 WIDTH: 2
MISSING DATA: EQ -1

REFERENCE: 0156
FILE I.D.: JD1
NUMERIC CHARACTER

V.A. NUMBER OF FULL-TIME LIBRARIANS.

V157
LIBRARIAN PART-TIME
LOCATION: 357 WIDTH: 2
MISSING DATA: EQ -1

REFERENCE: 0157
FILE I.D.: JD1
NUMERIC CHARACTER

V.A. NUMBER OF PART-TIME LIBRARIANS.

V158
#LIBRARIAN VACNCY FUL-TM
LOCATION: 359 WIDTH: 2
MISSING DATA: EQ -1

REFERENCE: 0158
FILE I.D.: JD1
NUMERIC CHARACTER

V.A. NUMBER OF FULL-TIME VACANCIES FOR LIBRARIANS.

V159
#LIBRARIAN VACNCY PRT-TM
LOCATION: 361 WIDTH: 2
MISSING DATA: EQ -1

REFERENCE: 0159
FILE I.D.: JD1
NUMERIC CHARACTER

V.A. NUMBER OF PART-TIME VACANCIES FOR LIBRARIANS.

V160
LIBRARIAN CIVIL SERVICE?
LOCATION: 363 WIDTH: 1
MISSING DATA: EQ 8 OR GE 9

REFERENCE: 0160
FILE I.D.: JD1
NUMERIC CHARACTER

JUVENILE DETENTION AND CORRECTIONAL
FACILITY CENSUS OF 1971

(V160, LIBRARIAN CIVIL SERVICE?, CONTINUED)

V.A. WAS THE POSITION OF LIBRARIAN A CIVIL SERVICE
POSITION?

52 1 YES

68 2 NO

602 9 MISSING DATA

V161
#PAROLE WORKER FULL-TIME
LOCATION: 364 WIDTH: 2
MISSING DATA: EQ -1

REFERENCE: 0161
FILE I.D.: JDI
NUMERIC CHARACTER

V.A. NUMBER OF FULL-TIME AFTERCARE AND/OR PAROLE
WORKERS.

V162
#PAROLE WORKER PART-TIME
LOCATION: 366 WIDTH: 2
MISSING DATA: EQ -1

REFERENCE: 0162
FILE I.D.: JDI
NUMERIC CHARACTER

V.A. NUMBER OF PART-TIME AFTERCARE AND/OR PAROLE
WORKERS.

V163
#PAROLE WORK VAC FUL-TIM
LOCATION: 368 WIDTH: 2
MISSING DATA: EQ -1

REFERENCE: 0163
FILE I.D.: JDI
NUMERIC CHARACTER

V.A. NUMBER OF FULL-TIME VACANCIES FOR AFTERCARE OR
PAROLE WORKERS.

V164
#PAROLE WORK VAC PRT-TIM
LOCATION: 370 WIDTH: 2
MISSING DATA: EQ -1

REFERENCE: 0164
FILE I.D.: JDI
NUMERIC CHARACTER

V.A. NUMBER OF PART-TIME VACANCIES FOR AFTERCARE OR
PAROLE WORKERS.

V165
PAROLE WORKR CIVIL SERV?
LOCATION: 372 WIDTH: 2
MISSING DATA: EQ 8 OR GE 9

REFERENCE: 0165
FILE I.D.: JDI
NUMERIC CHARACTER

JUVENILE DETENTION AND CORRECTIONAL
FACILITY CENSUS OF 1971

(V165, PAROLE WORKR CIVIL SERV?, CONTINUED)

V.A. WERE THE POSITIONS OF AFTERCARE AND PAROLE WORKERS
CIVIL SERVICE POSITIONS?

62 1 YES

29 2 NO

1 8 UNDEFINED

630 9 MISSING DATA

V166
REC WORKERS FULL-TIME
LOCATION: 374 WIDTH: 2
MISSING DATA: EQ -1

REFERENCE: 0166
FILE I.D.: JDI
NUMERIC CHARACTER

V.A. NUMBER OF FULL-TIME RECREATION WORKERS.

V167
REC WORKERS PART-TIME
LOCATION: 376 WIDTH: 2
MISSING DATA: EQ -1

REFERENCE: 0167
FILE I.D.: JDI
NUMERIC CHARACTER

V.A. NUMBER OF PART-TIME RECREATION WORKERS.

V168
#REC WORK VACNCY FUL-TIM
LOCATION: 378 WIDTH: 2
MISSING DATA: EQ -1

REFERENCE: 0168
FILE I.D.: JDI
NUMERIC CHARACTER

V.A. NUMBER OF FULL-TIME VACANCIES FOR RECREATION
WORKERS.

V169
#REC WORK VACNCY PRT-TIM
LOCATION: 380 WIDTH: 2
MISSING DATA: EQ -1

REFERENCE: 0169
FILE I.D.: JDI
NUMERIC CHARACTER

V.A. NUMBER OF PART-TIME VACANCIES FOR RECREATION
WORKERS.

V170
REC WORKER CIVIL SERV?
LOCATION: 382 WIDTH: 1
MISSING DATA: EQ 8 OR GE 9

REFERENCE: 0170
FILE I.D.: JDI
NUMERIC CHARACTER

JUVENILE DETENTION AND CORRECTIONAL
FACILITY CENSUS OF 1971

(V170, REC WORKER CIVIL SERV?, CONTINUED)

V.A. WAS THE POSITION OF RECREATION WORKER A CIVIL
SERVICE POSITION?

148 1 YES
112 2 NO
462 9 MISSING DATA

V171
PHYSICIANS FULL-TIME
LOCATION: 383 WIDTH: 2
MISSING DATA: EQ -1

REFERENCE: 0171
FILE I.D.: JD1
NUMERIC CHARACTER

V.A. NUMBER OF FULL-TIME PHYSICIANS.

V172
PHYSICIANS PART-TIME
LOCATION: 385 WIDTH: 2
MISSING DATA: EQ -1

REFERENCE: 0172
FILE I.D.: JD1
NUMERIC CHARACTER

V.A. NUMBER OF PART-TIME PHYSICIANS.

V173
#PHYSICIAN VACNCY FUL-TM
LOCATION: 387 WIDTH: 2
MISSING DATA: EQ -1

REFERENCE: 0173
FILE I.D.: JD1
NUMERIC CHARACTER

V.A. NUMBER OF FULL-TIME VACANCIES FOR PHYSICIANS.

V174
#PHYSICIAN VACNCY PRT-TM
LOCATION: 389 WIDTH: 2
MISSING DATA: EQ -1

REFERENCE: 0174
FILE I.D.: JD1
NUMERIC CHARACTER

V.A. NUMBER OF PART-TIME VACANCIES FOR PHYSICIANS.

V175
PHYSICIAN CIVIL SERVICE?
LOCATION: 391 WIDTH: 1
MISSING DATA: EQ 8 OR GE 9

REFERENCE: 0175
FILE I.D.: JD1
NUMERIC CHARACTER

V.A. WAS THE POSITION OF PHYSICIAN A CIVIL SERVICE
POSITION?

JUVENILE DETENTION AND CORRECTIONAL
FACILITY CENSUS OF 1971

(V175, PHYSICIAN CIVIL SERVICE?, CONTINUED)

90 1 YES
222 2 NO
410 9 MISSING DATA

V176
#REGISTER NURSE FUL-TIME
LOCATION: 392 WIDTH: 2
MISSING DATA: EQ -1

REFERENCE: 0176
FILE I.D.: JD1
NUMERIC CHARACTER

V.A. NUMBER OF FULL-TIME REGISTERED NURSES.

V177
#REGISTER NURSE PRT-TIME
LOCATION: 394 WIDTH: 2
MISSING DATA: EQ -1

REFERENCE: 0177
FILE I.D.: JD1
NUMERIC CHARACTER

V.A. NUMBER OF PART-TIME REGISTERED NURSES.

V178
#REG NURSE VACNCY FUL-TM
LOCATION: 396 WIDTH: 2
MISSING DATA: EQ -1

REFERENCE: 0178
FILE I.D.: JD1
NUMERIC CHARACTER

V.A. NUMBER OF FULL-TIME VACANCIES FOR REGISTERED
NURSES.

V179
#REG NURSE VACNCY PRT-TM
LOCATION: 398 WIDTH: 2
MISSING DATA: EQ -1

REFERENCE: 0179
FILE I.D.: JD1
NUMERIC CHARACTER

V.A. NUMBER OF PART-TIME VACANCIES FOR REGISTERED
NURSES.

V180
REG NURSE CIVIL SERVICE?
LOCATION: 400 WIDTH: 1
MISSING DATA: EQ 8 OR GE 9

REFERENCE: 0180
FILE I.D.: JD1
NUMERIC CHARACTER

V.A. WAS THE POSITION OF REGISTERED NURSE A CIVIL
SERVICE POSITION?

183 1 YES

JUVENILE DETENTION AND CORRECTIONAL
FACILITY CENSUS OF 1971

(V180, REG NURSE CIVIL SERVICE?, CONTINUED)

117 2 NO
422 9 MISSING DATA

V181
DENTISTS FULL-TIME
LOCATION: 401 WIDTH: 2
MISSING DATA: EQ -1

REFERENCE: 0181
FILE I.D.: JD1
NUMERIC CHARACTER

V.A. NUMBER OF FULL-TIME DENTISTS.

V182
DENTISTS PART-TIME
LOCATION: 403 WIDTH: 2
MISSING DATA: EQ -1

REFERENCE: 0182
FILE I.D.: JD1
NUMERIC CHARACTER

V.A. NUMBER OF PART-TIME DENTISTS.

V183
#DENTIST VACANCY FUL-TIM
LOCATION: 405 WIDTH: 2
MISSING DATA: EQ -1

REFERENCE: 0183
FILE I.D.: JD1
NUMERIC CHARACTER

V.A. NUMBER OF FULL-TIME VACANCIES FOR DENTISTS.

V184
#DENTIST VACANCY PRT-TIM
LOCATION: 407 WIDTH: 2
MISSING DATA: EQ -1

REFERENCE: 0184
FILE I.D.: JD1
NUMERIC CHARACTER

V.A. NUMBER OF PART-TIME VACANCIES FOR DENTISTS.

V185
DENTIST CIVIL SERVICE?
LOCATION: 409 WIDTH: 1
MISSING DATA: EQ 8 OR GE 9

REFERENCE: 0185
FILE I.D.: JD1
NUMERIC CHARACTER

V.A. WAS THE POSITION OF DENTIST A CIVIL SERVICE
POSITION?

71 1 YES
103 2 NO
1 8 UNDEFINED

JUVENILE DETENTION AND CORRECTIONAL
FACILITY CENSUS OF 1971

(V185, DENTIST CIVIL SERVICE?, CONTINUED)

547 9 MISSING DATA

V186
#MEDICAL AIDES FULL-TIME
LOCATION: 410 WIDTH: 2
MISSING DATA: EQ -1

REFERENCE: 0186
FILE I.D.: JD1
NUMERIC CHARACTER

V.A. NUMBER OF FULL-TIME MEDICAL AIDES.

V187
#MEDICAL AIDES PART-TIME
LOCATION: 412 WIDTH: 2
MISSING DATA: EQ -1

REFERENCE: 0187
FILE I.D.: JD1
NUMERIC CHARACTER

V.A. NUMBER OF PART-TIME MEDICAL AIDES.

V188
#MED AIDE VACNCY FUL-TIM
LOCATION: 414 WIDTH: 2
MISSING DATA: EQ -1

REFERENCE: 0188
FILE I.D.: JD1
NUMERIC CHARACTER

V.A. NUMBER OF FULL-TIME VACANCIES FOR MEDICAL AIDES.

V189
#MED AIDE VACNCY PRT-TIM
LOCATION: 416 WIDTH: 2
MISSING DATA: EQ -1

REFERENCE: 0189
FILE I.D.: JD1
NUMERIC CHARACTER

V.A. NUMBER OF PART-TIME VACANCIES FOR MEDICAL AIDES.

V190
MED AIDE CIVIL SERVICE?
LOCATION: 418 WIDTH: 1
MISSING DATA: EQ 8 OR GE 9

REFERENCE: 0190
FILE I.D.: JD1
NUMERIC CHARACTER

V.A. WAS THE POSITION OF MEDICAL AIDE A CIVIL SERVICE
POSITION?

70 1 YES
49 2 NO
603 9 MISSING DATA

JUVENILE DETENTION AND CORRECTIONAL
FACILITY CENSUS OF 1971

V191
#CLASSIFICAT OFCR FUL-TM
LOCATION: 419 WIDTH: 2
MISSING DATA: EQ -1

REFERENCE: 0191
FILE I.D.: JD1
NUMERIC CHARACTER

V.A. NUMBER OF FULL-TIME CLASSIFICATION OFFICERS.

V192
#CLASSIFICAT OFCR PRT-TM
LOCATION: 421 WIDTH: 2
MISSING DATA: EQ -1

REFERENCE: 0192
FILE I.D.: JD1
NUMERIC CHARACTER

V.A. NUMBER OF PART-TIME CLASSIFICATION OFFICERS.

V193
#CLASS OFCR VAC FUL-TIME
LOCATION: 423 WIDTH: 2
MISSING DATA: EQ -1

REFERENCE: 0193
FILE I.D.: JD1
NUMERIC CHARACTER

V.A. NUMBER OF FULL-TIME VACANCIES FOR CLASSIFICATION OFFICERS.

V194
~~#CLASS OFCR VAC PART-TM~~
LOCATION: 425 WIDTH: 2
MISSING DATA: EQ -1

REFERENCE: 0194
FILE I.D.: JD1
NUMERIC CHARACTER

V.A. NUMBER OF PART-TIME VACANCIES FOR CLASSIFICATION OFFICERS.

V195
CLASS OFCR CIVIL SERV?
LOCATION: 427 WIDTH: 1
MISSING DATA: EQ 8 OR GE 9

REFERENCE: 0195
FILE I.D.: JD1
NUMERIC CHARACTER

V.A. WAS THE POSITION OF CLASSIFICATION OFFICER A CIVIL SERVICE POSITION?

18 1 YES
8 2 NO
1 8 UNDEFINED
695 9 MISSING DATA

JUVENILE DETENTION AND CORRECTIONAL
FACILITY CENSUS OF 1971

V196
#OTHER TREAT/ED FUL-TIME
LOCATION: 428 WIDTH: 3
MISSING DATA: EQ -1

REFERENCE: 0196
FILE I.D.: JD1
NUMERIC CHARACTER

V.A. NUMBER OF OTHER FULL-TIME TREATMENT AND EDUCATIONAL STAFF.

V197
#OTHER TREAT/ED PART-TM
LOCATION: 431 WIDTH: 2
MISSING DATA: EQ -1

REFERENCE: 0197
FILE I.D.: JD1
NUMERIC CHARACTER

V.A. NUMBER OF OTHER PART-TIME TREATMENT AND EDUCATIONAL STAFF.

V198
#OTHR TREAT/ED VAC FL-TM
LOCATION: 433 WIDTH: 2
MISSING DATA: EQ -1

REFERENCE: 0198
FILE I.D.: JD1
NUMERIC CHARACTER

V.A. NUMBER OF FULL-TIME VACANCIES FOR OTHER TREATMENT AND EDUCATIONAL STAFF.

V199
#OTHR TREAT/ED VAC PT-TM
LOCATION: 435 WIDTH: 2
MISSING DATA: EQ -1

REFERENCE: 0199
FILE I.D.: JD1
NUMERIC CHARACTER

V.A. NUMBER OF PART-TIME VACANCIES FOR OTHER TREATMENT AND EDUCATIONAL STAFF.

V200
OTHR TREAT/ED CIVL SERV?
LOCATION: 437 WIDTH: 1
MISSING DATA: EQ 8 OR GE 9

REFERENCE: 0200
FILE I.D.: JD1
NUMERIC CHARACTER

V.A. WERE THE OTHER EDUCATIONAL POSITIONS CIVIL SERVICE POSITIONS?

156 1 YES
108 2 NO
458 9 MISSING DATA

REF. NOS. 201-205. OPERATIONAL AND MAINTENANCE STAFF INCLUDE POSITIONS SUCH AS GARDENER, JANITOR, WATCHMAN, CHAUFFEUR, CARPENTER, PLUMBER, COOK, BAKER, PAINTER, PRINTER, BARBER, LAUNDRESS, MAID, AND DAIRYMAN.

JUVENILE DETENTION AND CORRECTIONAL
FACILITY CENSUS OF 1971

V201
OPERAT/MAINT FULL-TIME
LOCATION: 438 WIDTH: 3
MISSING DATA: EQ -1

REFERENCE: 0201
FILE I.D.: JD1
NUMERIC CHARACTER

V.A. NUMBER OF FULL-TIME OPERATIONAL AND MAINTENANCE
STAFF.

V202
OPERAT/MAINT PART-TIME
LOCATION: 441 WIDTH: 2
MISSING DATA: EQ -1

REFERENCE: 0202
FILE I.D.: JD1
NUMERIC CHARACTER

V.A. NUMBER OF PART-TIME OPERATIONAL AND MAINTENANCE
STAFF.

V203
#OPR/MAINT VAC FULL-TIME
LOCATION: 443 WIDTH: 2
MISSING DATA: EQ -1

REFERENCE: 0203
FILE I.D.: JD1
NUMERIC CHARACTER

V.A. NUMBER OF FULL-TIME VACANCIES FOR OPERATIONAL AND
MAINTENANCE STAFF.

V204
#OPR/MAINT VAC PART-TIME
LOCATION: 445 WIDTH: 2
MISSING DATA: EQ -1

REFERENCE: 0204
FILE I.D.: JD1
NUMERIC CHARACTER

V.A. NUMBER OF PART-TIME VACANCIES FOR OPERATIONAL AND
MAINTENANCE STAFF.

V205
OPR/MAINT CIVIL SERVICE?
LOCATION: 447 WIDTH: 1
MISSING DATA: EQ 8 OR GE 9

REFERENCE: 0205
FILE I.D.: JD1
NUMERIC CHARACTER

V.A. WERE OPERATIONAL AND MAINTENANCE POSITIONS CIVIL
SERVICE POSITIONS?

315 1 YES

232 2 NO

175 9 MISSING DATA

REF. NOS. 206-212. THE DATA IN THESE VARIABLES ARE FOR
THE PERIOD COVERED BY THIS REPORT, REF. NOS. 16-21.

JUVENILE DETENTION AND CORRECTIONAL
FACILITY CENSUS OF 1971

V206
#ADMINISTRATIV ADDITIONS
LOCATION: 448 WIDTH: 3
MISSING DATA: EQ -1

REFERENCE: 0206
FILE I.D.: JD1
NUMERIC CHARACTER

V.B.1 NUMBER OF FULL-TIME ADMINISTRATIVE PERSONNEL
HIRED.

V207
#ADMINISTRATV SEPARATION
LOCATION: 451 WIDTH: 2
MISSING DATA: EQ -1

REFERENCE: 0207
FILE I.D.: JD1
NUMERIC CHARACTER

V.B.1. NUMBER OF FULL-TIME ADMINISTRATIVE PERSONNEL
SEPARATED FROM STAFF.

V208
TREAT/EDUC ADDITIONS
LOCATION: 453 WIDTH: 3
MISSING DATA: EQ -1

REFERENCE: 0208
FILE I.D.: JD1
NUMERIC CHARACTER

V.B.2. NUMBER OF FULL-TIME TREATMENT AND EDUCATIONAL
PERSONNEL HIRED.

V209
TREAT/EDUC SEPARATIONS
LOCATION: 456 WIDTH: 3
MISSING DATA: EQ -1

REFERENCE: 0209
FILE I.D.: JD1
NUMERIC CHARACTER

V.B.2. NUMBER OF FULL-TIME TREATMENT AND EDUCATIONAL
PERSONNEL SEPARATED FROM STAFF.

V210
OPR/MAINT ADDITIONS
LOCATION: 459 WIDTH: 3
MISSING DATA: EQ -1

REFERENCE: 0210
FILE I.D.: JD1
NUMERIC CHARACTER

V.B.3. NUMBER OF FULL-TIME OPERATIONAL AND MAINTENANCE
PERSONNEL HIRED.

V211
OPR/MAINT SEPARATIONS
LOCATION: 462 WIDTH: 2
MISSING DATA: EQ -1

REFERENCE: 0211
FILE I.D.: JD1
NUMERIC CHARACTER

V.B.3. NUMBER OF FULL-TIME OPERATIONAL AND MAINTENANCE
PERSONNEL SEPARATED FROM STAFF.

JUVENILE DETENTION AND CORRECTIONAL
FACILITY CENSUS OF 1971

V212
AVG # FULL-TIME EMPLOYEES
LOCATION: 464 WIDTH: 3
MISSING DATA: EQ -1

REFERENCE: 0212
FILE I.D.: JD1
NUMERIC CHARACTER

V.C. ESTIMATED AVERAGE NUMBER OF FULL-TIME EMPLOYEES.

V213
EXPEND PERIOD BEGIN-MO
LOCATION: 467 WIDTH: 2
MISSING DATA: EQ 99

REFERENCE: 0213
FILE I.D.: JD1
NUMERIC CHARACTER

VI. BEGINNING MONTH OF REPORTING PERIOD FOR
INSTITUTIONAL COSTS.

V214
EXPEND PERIOD BEGIN-YEAR
LOCATION: 469 WIDTH: 2
MISSING DATA: EQ 99

REFERENCE: 0214
FILE I.D.: JD1
NUMERIC CHARACTER

VI. BEGINNING YEAR OF REPORTING PERIOD FOR
INSTITUTIONAL COSTS.

V215
EXPEND PERIOD END-MONTH
LOCATION: 471 WIDTH: 2
MISSING DATA: EQ 99

REFERENCE: 0215
FILE I.D.: JD1
NUMERIC CHARACTER

VI. ENDING MONTH OF REPORTING PERIOD FOR INSTITUTIONAL
COSTS.

V216
EXPEND PERIOD END-YEAR
LOCATION: 473 WIDTH: 2
MISSING DATA: EQ 99

REFERENCE: 0216
FILE I.D.: JD1
NUMERIC CHARACTER

VI. ENDING YEAR OF REPORTING PERIOD FOR INSTITUTIONAL
COSTS.

V217
CAPITAL EXPENDITURES
LOCATION: 475 WIDTH: 7
MISSING DATA: EQ -1

REFERENCE: 0217
FILE I.D.: JD1
NUMERIC CHARACTER

VI.A. CAPITAL EXPENDITURES; RESPONDENTS WERE REQUESTED
TO INCLUDE NEW BUILDINGS, MAJOR REPAIRS OR IMPROVEMENTS, AND
NEW EQUIPMENT FOR WHICH THE COST IS \$100 OR MORE.

JUVENILE DETENTION AND CORRECTIONAL
FACILITY CENSUS OF 1971

V218
ADMINISTRATIVE SALARIES
LOCATION: 482 WIDTH: 6
MISSING DATA: EQ -1

REFERENCE: 0218
FILE I.D.: JD1
NUMERIC CHARACTER

VI.B.1. SALARIES, WAGES, AND OTHER COMPENSATION, SUCH
AS MEALS, LODGING AND UNIFORMS, FOR ADMINISTRATIVE
PERSONNEL.

V219
TREATMENT/EDUC SALARIES
LOCATION: 488 WIDTH: 7
MISSING DATA: EQ -1

REFERENCE: 0219
FILE I.D.: JD1
NUMERIC CHARACTER

VI.B.2. SALARIES, WAGES, AND OTHER COMPENSATION, SUCH
AS MEALS, LODGING, AND UNIFORMS, FOR TREATMENT AND
EDUCATIONAL PERSONNEL.

V220
OPR/MAINT SALARIES
LOCATION: 495 WIDTH: 6
MISSING DATA: EQ -1

REFERENCE: 0220
FILE I.D.: JD1
NUMERIC CHARACTER

VI.B.3. SALARIES, WAGES, AND OTHER COMPENSATION, SUCH
AS MEALS, LODGING, AND UNIFORMS, FOR OPERATIONAL AND
MAINTENANCE PERSONNEL.

V221
OTHER EXPENSES
LOCATION: 501 WIDTH: 7
MISSING DATA: EQ -1

REFERENCE: 0221
FILE I.D.: JD1
NUMERIC CHARACTER

VI.C. ALL OTHER COSTS, RESPONDENTS WERE REQUESTED TO
INCLUDE THE FAIR MARKET VALUE OF FREE COMMODITIES OR
SERVICES RECEIVED FROM ANY PUBLIC OR CHARITABLE
ORGANIZATION.

V222
YEAR CONSTRUCTION BEGAN
LOCATION: 508 WIDTH: 4
MISSING DATA: EQ 9999

REFERENCE: 0222
FILE I.D.: JD1
NUMERIC CHARACTER

VII.A.1. WHAT YEAR WAS CONSTRUCTION BEGUN ON YOUR
FACILITY? AN ESTIMATE WILL SUFFICE IF THE FACILITY IS VERY
OLD AND THE EXACT YEAR IS NOT KNOWN.

JUVENILE DETENTION AND CORRECTIONAL
FACILITY CENSUS OF 1971

V223
YEAR LATEST CONSTRUCTION
LOCATION: 512 WIDTH: 4
MISSING DATA: EQ 9999

REFERENCE: 0223
FILE I.D.: JD1
NUMERIC CHARACTER

VII.A.2. WHAT YEAR DID THE LATEST CONSTRUCTION OR
RENOVATION OF YOUR FACILITY COSTING MORE THAN \$50,000 TAKE
PLACE?

V224
COST PLANNED CONSTRUCTION
LOCATION: 516 WIDTH: 8
MISSING DATA: EQ -1

REFERENCE: 0224
FILE I.D.: JD1
NUMERIC CHARACTER

VII.A.3. APPROXIMATE COST OF CONSTRUCTION UNDERWAY OR
PLANNED FOR FISCAL YEAR 1970-71.

V225
MEDICAL FACILITIES
LOCATION: 524 WIDTH: 1
MISSING DATA: EQ 9

REFERENCE: 0225
FILE I.D.: JD1
NUMERIC CHARACTER

VIII.A. KIND OF MEDICAL FACILITIES AVAILABLE.

- 289 1 NONE
- 162 2 INFIRMARY W/O BEDS
INFIRMARY WITHOUT BEDS FOR OVERNIGHT STAYS.
- 169 3 INFIRMARY WITH BEDS
INFIRMARY WITH BEDS FOR OVERNIGHT STAYS.
- 102 4 OTHER

V226
SPORTS PROGRAM?
LOCATION: 525 WIDTH: 1
MISSING DATA: GE 3

REFERENCE: 0226
FILE I.D.: JD1
NUMERIC CHARACTER

VIII.B.1. DOES THIS FACILITY HAVE COMPETITIVE OR
INTRAMURAL SPORTS?

- 474 1 YES
- 248 2 NO

JUVENILE DETENTION AND CORRECTIONAL
FACILITY CENSUS OF 1971

V227
RADIO AVAILABLE?
LOCATION: 526 WIDTH: 1
MISSING DATA: GE 3

REFERENCE: 0227
FILE I.D.: JD1
NUMERIC CHARACTER

VIII.B.2. DOES THIS FACILITY HAVE A RADIO?

- 660 1 YES
- 62 2 NO

V228
TELEVISION AVAILABLE?
LOCATION: 527 WIDTH: 1
MISSING DATA: GE 3

REFERENCE: 0228
FILE I.D.: JD1
NUMERIC CHARACTER

VIII.B.3. DOES THIS FACILITY HAVE A TELEVISION SET?

- 691 1 YES
- 31 2 NO

V229
MOVIES AVAILABLE?
LOCATION: 528 WIDTH: 1
MISSING DATA: GE 3

REFERENCE: 0229
FILE I.D.: JD1
NUMERIC CHARACTER

VIII.B.4. DOES THIS FACILITY HAVE MOTION PICTURES?

- 536 1 YES
- 186 2 NO

V230
LIBRARY AVAILABLE?
LOCATION: 529 WIDTH: 1
MISSING DATA: GE 3

REFERENCE: 0230
FILE I.D.: JD1
NUMERIC CHARACTER

VIII.B.5. DOES THIS FACILITY HAVE A LIBRARY?

- 588 1 YES
- 134 2 NO

JUVENILE DETENTION AND CORRECTIONAL
FACILITY CENSUS OF 1971

V231
GYMNASIUM AVAILABLE?
LOCATION: 530 WIDTH: 1
MISSING DATA: GE 3

REFERENCE: 0231
FILE I.D.: JDI
NUMERIC CHARACTER

VIII.B.6. DOES THIS FACILITY HAVE A GYMNASIUM?

376 1 YES

346 2 NO

V232
ATHLETIC FIELD AVAILABLE?
LOCATION: 531 WIDTH: 1
MISSING DATA: GE 3

REFERENCE: 0232
FILE I.D.: JDI
NUMERIC CHARACTER

VIII.B.7. DOES THIS FACILITY HAVE AN ATHLETIC FIELD?

519 1 YES

203 2 NO

V233
OTHER RECREATION FACILITY AVAILABLE?
LOCATION: 532 WIDTH: 1
MISSING DATA: GE 3

REFERENCE: 0233
FILE I.D.: JDI
NUMERIC CHARACTER

VIII.B.8. DOES THIS FACILITY HAVE OTHER RECREATIONAL FACILITIES AND PROGRAMS?

361 1 YES

361 2 NO

V234
EDUC SERVICES AVAILABLE?
LOCATION: 533 WIDTH: 1
MISSING DATA: EQ 5 OR GE 6

REFERENCE: 0234
FILE I.D.: JDI
NUMERIC CHARACTER

VIII.C.1. IF ACADEMIC EDUCATIONAL SERVICES ARE AVAILABLE AT THIS FACILITY, WHERE ARE THEY LOCATED?

85 1 IN THE COMMUNITY

476 2 AT THE FACILITY

92 3 BOTH

JUVENILE DETENTION AND CORRECTIONAL
FACILITY CENSUS OF 1971

(V234, EDUC SERVICES AVAILABLE?, CONTINUED)

0 4 NONE

69 6 MISSING DATA
ALL 69 CASES CONTAINED A VALUE OF BLANK, WHICH WAS NOT DEFINED AND THUS WAS RECODED TO A MISSING DATA VALUE. THESE INSTITUTIONS PROBABLY HAVE NO ACADEMIC EDUCATION SERVICES.

V235
VOC EDUC AVAILABLE?
LOCATION: 534 WIDTH: 1
MISSING DATA: EQ 5 OR GE 6

REFERENCE: 0235
FILE I.D.: JDI
NUMERIC CHARACTER

VIII.C.2. IF VOCATIONAL SERVICES ARE AVAILABLE AT THIS FACILITY, WHERE ARE THEY LOCATED?

119 1 IN THE COMMUNITY

217 2 AT THE FACILITY

65 3 BOTH

0 4 NONE

321 6 MISSING DATA
ALL 321 CASES CONTAINED A VALUE OF BLANK, WHICH WAS NOT DEFINED AND THUS WAS RECODED TO A MISSING DATA VALUE. THESE INSTITUTIONS PROBABLY HAVE NO VOCATIONAL EDUCATION SERVICES.

V236
INDIVIDUAL COUNSELING?
LOCATION: 535 WIDTH: 1
MISSING DATA: GE 3

REFERENCE: 0236
FILE I.D.: JDI
NUMERIC CHARACTER

VIII.D.1.(1) DOES THIS FACILITY ROUTINELY PROVIDE INDIVIDUAL COUNSELING?

679 1 YES

43 2 NO

V237
GROUP COUNSELING?
LOCATION: 536 WIDTH: 1
MISSING DATA: GE 3

REFERENCE: 0237
FILE I.D.: JDI
NUMERIC CHARACTER

VIII.D.1.(2) DOES THIS FACILITY ROUTINELY PROVIDE GROUP COUNSELING?

JUVENILE DETENTION AND CORRECTIONAL
FACILITY CENSUS OF 1971

(V237, GROUP COUNSELING?, CONTINUED)

558 1 YES

164 2 NO

V238
FAMILY/JUVEN COUNSELNG?
LOCATION: 537 WIDTH: 1
MISSING DATA: GE 3

REFERENCE: 0238
FILE I.D.: JD1
NUMERIC CHARACTER

VIII.D.1.(3) DOES THIS FACILITY ROUTINELY PROVIDE
COUNSELING INVOLVING THE JUVENILE AND HIS FAMILY?

413 1 YES

309 2 NO

REF. NOS. 239-245. THESE VARIABLES APPLY TO TRAINING
SCHOOLS, FORESTRY CAMPS, AND SIMILAR FACILITIES, ONLY.

V239
AFTERCARE/PAROLE PROGRM?
LOCATION: 538 WIDTH: 1
MISSING DATA: GE 3

REFERENCE: 0239
FILE I.D.: JD1
NUMERIC CHARACTER

VIII.D.2.(1) IS THERE AN AFTERCARE OR PAROLE PROGRAM
AVAILABLE FOR CHILDREN WHO ARE RELEASED FROM YOUR FACILITY?

4 1 NO

718 2 YES

V240
PAROLE OPR BY FACILITY?
LOCATION: 539 WIDTH: 1
MISSING DATA: GE 3

REFERENCE: 0240
FILE I.D.: JD1
NUMERIC CHARACTER

VIII.D.2.(2) DOES THE FACILITY ITSELF OPERATE AN
AFTERCARE OR PAROLE PROGRAM FOR CHILDREN WHO ARE RELEASED
FROM THE FACILITY?

81 1 YES

641 2 NO

JUVENILE DETENTION AND CORRECTIONAL
FACILITY CENSUS OF 1971

V241
PAROLE OPERATD BY STATE?
LOCATION: 540 WIDTH: 1
MISSING DATA: GE 3

REFERENCE: 0241
FILE I.D.: JD1
NUMERIC CHARACTER

VIII.D.2.(3) DOES THE STATE PAROLE AUTHORITY OPERATE AN
AFTERCARE OR PAROLE PROGRAM FOR CHILDREN WHO ARE RELEASED
FROM THE FACILITY?

52 1 YES

670 2 NO

V242
PAROLE OPERATD BY COURT?
LOCATION: 541 WIDTH: 1
MISSING DATA: GE 3

REFERENCE: 0242
FILE I.D.: JD1
NUMERIC CHARACTER

VIII.D.2.(4) DOES THE PROBATION DEPARTMENT OF THE
COMMITTING COURT OPERATE AN AFTERCARE OR PAROLE PROGRAM FOR
CHILDREN WHO ARE RELEASED FROM THE FACILITY? WARNING: SEE
APPENDIX 2 FOR MORE INFORMATION ABOUT THIS VARIABLE.

134 1 YES

588 2 NO

V243
PAROLE OPR BY SAME DEPT?
LOCATION: 542 WIDTH: 1
MISSING DATA: GE 3

REFERENCE: 0243
FILE I.D.: JD1
NUMERIC CHARACTER

VIII.D.2.(5) DOES THE STATE DEPARTMENT OF WHICH THIS
FACILITY IS A UNIT OPERATE AN AFTERCARE OR PAROLE PROGRAM
FOR CHILDREN WHO ARE RELEASED FROM THE FACILITY?

189 1 YES

533 2 NO

V244
PAROLE OPR BY OTHER?
LOCATION: 543 WIDTH: 1
MISSING DATA: GE 3

REFERENCE: 0244
FILE I.D.: JD1
NUMERIC CHARACTER

VIII.D.2.(6) DOES AN AGENCY OTHER THAN THOSE MENTIONED
IN QUESTION VIII.D.2.(2)-(5) (REF. NOS. 240-243) OPERATE AN
AFTERCARE OR PAROLE PROGRAM FOR CHILDREN WHO ARE RELEASED
FROM THE FACILITY?

JUVENILE DETENTION AND CORRECTIONAL
FACILITY CENSUS OF 1971

(V244, PAROLE OPR BY OTHER?, CONTINUED)

25 1 YES
697 2 NO

V245
JOB PLACEMENT PROGRAM?
LOCATION: 544 WIDTH: 1
MISSING DATA: EQ 3 OR GE 4

REFERENCE: 0245
FILE I.D.: J01
NUMERIC CHARACTER

VIII.D.3. DOES THIS FACILITY HAVE A JOB PLACEMENT
PROGRAM FOR JUVENILES WHO ARE RELEASED AND ARE PLANNING TO
ENTER THE WORK FORCE?

166 1 YES
229 2 NO
327 3 MISSING DATA

APPENDIX 1: DEFINITION OF TERMS

Following is a glossary of terms, concepts, and categories used in collecting the Juvenile Detention and Correctional Facility Census of 1971. This glossary was, for the most part, taken from the above cited publication, Children In Custody.

Classification of Residents

In terms of a person's being charged with a criminal offense, a juvenile is one over whom the juvenile court has original jurisdiction in cases of delinquency. The juvenile court's jurisdiction is determined by the age of the client who must, in most States, be under 18 years old. In this census, the actual definition of a juvenile or child was left to each jurisdiction since no universal definition seemed applicable to all phases of the individual's contact with the juvenile justice system. An adjudicated delinquent is one who, through formal judicial proceedings, has been adjudged guilty of a criminal offense or has been declared in need of supervision by the court. Purely for statistical purposes, voluntary admissions to juvenile facilities were also tallied as adjudicated delinquents. Voluntary admissions include juveniles who committed themselves or who were referred to the facility for treatment by parents, court, school or social agency without being adjudged delinquent or declared in need of supervision by a court.

Juveniles awaiting transfer to another jurisdiction are juveniles who have allegedly committed a crime in or have run away from another jurisdictional area, including runaways from correctional facilities. Juveniles adjudicated delinquent and awaiting placement in a correctional facility are not included here but in the "juveniles adjudicated delinquent" category.

Juveniles held pending disposition by a court are juveniles held for delinquency who have not had any hearing or who have had only a preliminary hearing or screening, and who are awaiting further court action.

Dependent and neglected children are juveniles held in public facilities as a result of the inability or unwillingness of their parents to care for them. Juveniles held on delinquency charges, adjudicated delinquent or declared in need of supervision, are not included here even if they may also be considered dependent or neglected. They are included in one of the other categories, as appropriate.

Classification of Offenses

Drug offenses are offenses related to drugs, whether classified as felonies or misdemeanors if committed by adults.

Felonies are offenses that would be felonies if committed by adults, except drug offenses.

Misdemeanors are offenses that would be misdemeanors if committed by adults, except drug offenses.

A status offense is an offense for which only juveniles, as opposed to adults, can be charged. It is an act prohibited to and often applicable only to juveniles such as truancy, curfew violation or the consumption of alcoholic beverages. The questionnaire uses the term juvenile offense to mean status offense.

Facility Descriptions

A detention center is a facility that provides temporary care in a physically restricting facility for juveniles in custody pending court disposition, and often for juveniles who have been adjudicated, or are awaiting return to another jurisdiction.

A halfway house or group home is a facility where juveniles live but are permitted extensive contact with the community through jobs, attendance at school, etc.

A ranch, forestry camp, or farm is a residential treatment facility for juveniles whose behavior does not necessitate the strict confinement of a training school. Often the children are allowed greater contact with the community than are the residents of training schools.

A reception or diagnostic center is a facility that screens juvenile court commitments and assigns them to appropriate correctional facilities.

A shelter is a facility that provides temporary care, similar to that of a detention center, in a physically unrestricting facility.

A training school is a specialized institution serving delinquent juveniles committed directly to it by juvenile court or placed in it by an agency having such authority.

The capacity of a detention or correctional facility is defined as the number of persons the facility was designed to hold, exclusive of arrangements for the accommodation of overcrowding.

The term ages held is defined as the ages of the youngest and oldest residents, males and females, held on the day the questionnaire was completed.

The term average length of stay is defined as follows: facilities were asked for the average length of stay of their inmates in fiscal 1971. The method of computation for this statistic was not specified. Therefore, such data should be regarded as estimates.

Classification of Facility Staff

Administrative staff includes superintendents, assistant superintendents, business managers, purchasing agents, stenographers, bookkeepers, accountants, switchboard operators, clerks and typists. Included are both payroll and nonpayroll staff, except community volunteers.

Operational and maintenance personnel includes positions such as gardener, janitor, watchmen, chauffeur, carpenter, plumber, cook, baker, painter,

printer, barber, laundress, maid and dairyman. Included are both payroll and nonpayroll staff, except community volunteers.

Treatment and educational personnel includes positions such as psychiatrist, psychologist, chaplain, cottage personnel, academic principal, director of vocational training, academic teacher, vocational teacher, social worker, librarian, aftercare worker, parole worker, recreation worker, physician, registered nurse, dentist, medical aide, and classification officer. Included are both payroll and nonpayroll staff, except community volunteers.

Data on educational or other requirements for holding these positions were not collected.

Expenditure Definitions

Operating expenditures include salaries, wages, and other operating expenditures, such as the purchase of food, supplies, and contractual services. Also, respondents were requested to include in "other operating expenditures" the fair market value of free commodities or services received from any public or charitable organizations.

In capital expenditures respondents were to include expenditures for new buildings, major repairs or improvements, and new equipment for which the cost is \$100 or more.

The year of latest construction or renovation is the year in which the latest construction or renovation costing more than \$50,000 took place.

APPENDIX 2: ERRORS AND PROBLEMS IN THE DATA

This appendix contains a discussion of known errors, inconsistencies, and other limitations in the 1971 juvenile facility census data.

In the first section, errors are listed in order by variable, the affected cases are identified, and the status of corrections noted. Also, the codebook section contains a warning and a reference to this appendix in the entry for each affected variable.

The second section contains a discussion of limitations on the comparison of the 1971, 1972, and 1973 data.

Some of this information was generated by the L. E. A. A. Data Archive during the process of archiving the Eldreth, National Criminal Justice Information and Statistics Service, L. E. A. A., (202) 376-2622.

Errors by Variable and Case

The case identification variables for this file are:

Ref. No. 2: STATE NUMBER
 Ref. No. 3: LEVEL OF GOVERNMENT
 Ref. No. 4: COUNTY NUMBER
 Ref. No. 5: CITY NUMBER
 Ref. No. 6: CHECK DIGIT
 Ref. No. 7: AGENCY TYPE
 Ref. No. 8: TYPE OF FACILITY
 Ref. No. 9: AGENCY ID NUMBER

Ref. No. 90: AGE OF OLDEST MALE

Ref. No.	2	3	4	5	6	7	8	9
Case 1	39	0	021	000	0	5	4	19

Problem: Value of 0052 (age 52 years) looks too high.

Status: This answer has been verified on the original questionnaire form. The institution held adults as well as juveniles.

Ref. Nos. 22-87: Movement and population variables.

Ref. No.	2	3	4	5	6	7	8	9
Case 1	31	0	101	000	1	5	4	13
Case 2	39	0	021	000	0	5	4	19
Case 3	05	0						

Cases 3-17 include all California State facilities.

Problem: Population and movement data include adults or youthful offenders.

Population data for the New Jersey State training school (State 31)

includes 219 male adults in the total of 624 males held.

Of the 596 males in the Pennsylvania State training school (State 39) on June 30, 1971, about 45% were adults.

On June 30, 1971, there was a total of 2,023 youthful offenders in the California State facilities (State 5). Of these, 1,872 were males and 151, females. By type of facility, there were 317 youthful offenders in

reception or diagnostic centers, 1,468 in training schools, and 238 in ranches, forestry camps, and farms. The admissions and discharges data for these facilities also includes adults or youthful offenders.

Status: No adjustment have been made to the data.

Ref. Nos. 44-47: Movement variables

Ref. No.	2	3	4	5	6	7	8	9
Case 1	05	3						

Problem: For the State of California, the following counts which cannot be attributed to specific facilities should be added to the State totals for reception or diagnostic centers:

Ref. No. 44: # ADMITTED TO CUSTODY-M 149

Ref. No. 45: # ADMITTED TO CUSTODY-F 2

Ref. No. 46: # DISCHARGED/REMANDED-M 169

Ref. No. 47: # DISCHARGED/REMANDED-F 2

Status: No information is available to allocate this data to specific facilities.

Use and Comparison of 1971, 1972, and 1973 Data

Before comparing any of the three years for which data is available, the user should be aware of several general restrictions.

The 1972 data must be used with caution because they were collected in late 1973 as part of the combined 1972-73 census. This arrangement meant that facilities in existence in 1972 but not in late 1973 could not be represented in the data. In addition, some respondents could not provide actual data or reasonable estimates. L. E. A. A. considers the 1972 data to be minimum counts and chose not to compare it with any other years.

The categories of movement and population data for 1971 and 1973 are not exactly the same so that some judgment is necessary in comparing these years. For the final report of the 1972-73 census, an estimating procedure was used to inflate the 1973 movement data and make them comparable with the 1971 data.

The 1971 detention status category "adjudicated delinquent" includes persons in need of supervision and voluntary commitments. These categories are reported separately in the 1973 data and must be summed before comparing with the 1971 data.

The same kind of problem occurs in the staffing data. In 1973, payroll staff was reported separately from nonpayroll staff and both terms were defined on the questionnaire form. In 1971, the questionnaire requested counts of "employees" but in fact the data includes both "employees" on the payroll and other staff not on the payroll. In 1973, non-payroll staff included community volunteers who were not counted in 1971.

In 1971, definitions of full-time and part-time were stated in the questionnaire; they were not stated in the 1973 questionnaire. Also, there is no certainty that these data were reported as requested in 1971. Because of these reporting discrepancies, L. E. A. A. has chose to compare only full-time staff.

To compare 1971 full-time staff with the 1973 data, the 1973 payroll and non-payroll staff must be summed. Also, the 1971 data classified staff into specific job titles. The 1973 data includes more general categories. For these data, the 1971 data must be summed in order to make comparisons with the 1973.

APPENDIX 3: COUNTIES BY NAME

THE LIST WHICH FOLLOWS CONTAINS THE NAME OF EACH COUNTY FOR WHICH THERE IS A RECORD IN THE DATA FILE. THE LIST INCLUDES AND IS ORDERED BY THE STATE NUMBER AND THE COUNTY NUMBER, REF. NOS. 2 AND 4 RESPECTIVELY.

01 = ALABAMA

037 - JEFFERSON
045 - MADISON
049 - MOBILE
051 - MONTGOMERY
052 - MORGAN

02 = ALASKA

026 - KETCHIKAN, GATEWAY
027 - GREATER ANCHORAGE
032 - MATANUSKA, SUSITNA

03 = ARIZONA

001 - APACHE
002 - COCHISE
003 - COCONINO
004 - GILA
007 - MARICOPA
008 - MOHAVE
010 - PIMA

04 = ARKANSAS

004 - BENTON
010 - CLARK
026 - GARLAND
035 - JEFFERSON
060 - PULASKI

05 = CALIFORNIA

001 - ALAMEDA
003 - AMADOR
004 - BUTTE
007 - CONTRA COSTA
008 - DEL NORTE
010 - FRESNO
012 - HUMBOLDT
013 - IMPERIAL
015 - KERN

019 - LOS ANGELES

020 - MADERA
021 - MARIN
022 - MARIPOSA
023 - MENDOCINO
024 - MERCED
027 - MONTEREY
028 - NAPA
029 - NEVADA
030 - ORANGE
031 - PLACER
033 - RIVERSIDE
034 - SACRAMENTO
035 - SAN BENITO
036 - SAN BERNARDINO
037 - SAN DIEGO
038 - SAN FRANCISCO
039 - SAN JOAQUIN
040 - SAN LUIS OBISPO
041 - SAN MATEO
042 - SANTA BARBARA
043 - SANTA CLARA
044 - SANTA CRUZ
045 - SHASTA
047 - SISKIYOU
048 - SOLANO
049 - SONOMA
050 - STANISLAUS
052 - TEHAMA
054 - TULARE
056 - VENTURA
057 - YOLO
058 - YUBA

06 = COLORADO

001 - ADAMS
003 - ARAPAHOE
016 - DENVER
021 - EL PASO
028 - HUERFANO
030 - JEFFERSON

07 = CONNECTICUT

001 - FAIRFIELD
002 - HARTFORD
004 - MIDDLESEX
005 - NEW HAVEN
006 - NEW LONDON

08 = DELAWARE

001 - KENT
002 - NEW CASTLE
003 - SUSSEX

09 = DISTRICT OF COLUMBIA

001 - DISTRICT OF COLUMBIA

10 = FLORIDA

001 - ALACHUA
005 - BREVARD
006 - BROWARD
013 - DADE
016 - DUVAL
017 - ESCAMBIA
021 - GILCHRIST
025 - HARDEE
028 - HIGHLANDS
029 - HILLSBOROUGH
032 - JACKSON
035 - LAKE
036 - LEE
037 - LEON
041 - MANATEE
042 - MARION
045 - NASSAU
047 - OKEECHOBEE
048 - ORANGE
050 - PALM BEACH
052 - PINELLAS
053 - POLK
056 - ST. LUCIE
058 - SARASOTA
064 - VOLUSIA

11 = GEORGIA

005 - BALDWIN
011 - BIBB
015 - BRYAN
025 - CHATHAM

031 - CLAYTON
033 - COBB
044 - DE KALB
047 - DOUGHERTY
057 - FLOYD
060 - FULTON
069 - HALL
106 - MUSCOGEE
121 - RICHMOND
148 - WARE

12 = HAWAII

002 - HONOLULU
004 - MAUI

13 = IDAHO

003 - BANNOCK
022 - FREMONT
042 - TWIN FALLS

14 = ILLINOIS

001 - ADAMS
008 - CARROLL
010 - CHAMPAIGN
016 - COOK
022 - DU PAGE
032 - GRUNDY
039 - JACKSON
042 - JERSEY
045 - KANE
046 - KANKAKEE
048 - KNOX
049 - LAKE
050 - LA SALLE
060 - MADISON
064 - MASSAC
072 - PEORIA
076 - POPE
079 - RANDOLPH
082 - ST. CLAIR
099 - WILL
101 - WINNEBAGO

15 = INDIANA

002 - ALLEN
010 - CLARK
027 - GRANT
032 - HENDRICKS
045 - LAKE

049 - MARION
071 - ST. JOSEPH
084 - VIGO

16 = IOWA

042 - HARDIN
077 - POLK
082 - SCOTT
086 - TAMA
094 - WEBSTER
097 - WOODBURY

17 = KANSAS

046 - JOHNSON
062 - MITCHELL
087 - SEDGWICK
089 - SHAWNEE
105 - WYANDOTTE

18 = KENTUCKY

008 - BOONE
019 - CAMPBELL
034 - FAYETTE
056 - JEFFERSON
059 - KENTON
079 - MARSHALL
083 - MENIFEE
088 - MORGAN
116 - WAYNE

19 = LOUISIANA

009 - CADD0
010 - CALCASIEU
017 - EAST BATON ROUGE
026 - JEFFERSON
036 - ORLEANS
037 - QUACHITA
040 - RAPIDES

20 = MAINE

003 - CUMBERLAND
006 - KENNEBEC

21 = MARYLAND

001 - ALLEGANY
003 - BALTIMORE
004 - BALTIMORE
INDEPENDENT CITY
011 - FREDERICK
012 - GARRETT
017 - PRINCE GEORGES

22 = MASSACHUSETTS

001 - BARNSTABLE
005 - ESSEX
007 - HAMPDEN
009 - MIDDLESEX
013 - SUFFOLK
014 - WORCESTER

23 = MICHIGAN

003 - ALLEGAN
009 - BAY
011 - BERRIEN
013 - CALHOUN
019 - CLINTON
020 - CRAWFORD
025 - GENESEE
033 - INGHAM
038 - JACKSON
039 - KALAMAZOO
041 - KENT
046 - LENAWEE
050 - MACOMB
052 - MARQUETTE
058 - MONROE
061 - MUSKEGON
063 - OAKLAND
070 - OTTAWA
072 - ROSCOMMON
073 - SAGINAW
074 - ST. CLAIR
078 - SHIAWASSEE
081 - WASHTENAW
082 - WAYNE

24 = MINNESOTA

002 - ANOKA
025 - GOODHUE
027 - HENNEPIN
031 - ITASCA
058 - PINE

062 - RAMSEY
073 - STEARNS

25 = MISSISSIPPI

024 - HARRISON
025 - HINDS
046 - MARION

26 = MISSOURI

011 - BUCHANAN
012 - BUTLER
016 - CAPE GIRARDEAU
027 - COOPER
039 - GREENE
048 - JACKSON
057 - LINCOLN
059 - LIVINGSTON
089 - RAY
092 - ST. CHARLES
095 - ST. LOUIS
096 - ST. LOUIS CITY
INDEPENDENT CITY

27 = MONTANA

007 - CASCADE
009 - CUSTER
015 - FLATHEAD
025 - LEWIS AND CLARK

28 = NEBRASKA

010 - BUFFALO
028 - DOUGLAS
030 - FILLMORE
055 - LANCASTER

29 = NEVADA

002 - CLARK
004 - ELKO
009 - LINCOLN
016 - WASHOE

30 = NEW HAMPSHIRE

006 - HILLSBOROUGH

31 = NEW JERSEY

001 - ATLANTIC
002 - BERGEN
003 - BURLINGTON
004 - CAMDEN
007 - ESSEX
008 - GLOUCESTER
009 - HUDSON
010 - HUNTERDON
011 - MERCER
012 - MIDDLESEX
013 - MONMOUTH
014 - MORRIS
015 - OCEAN
016 - PASSAIC
018 - SOMERSET
019 - SUSSEX
020 - UNION
021 - WARREN

32 = NEW MEXICO

001 - BERNALILLO
004 - COLFAX
026 - SANTA FE

33 = NEW YORK

001 - ALBANY
004 - BROOME
005 - CATTARAUGUS
006 - CAYUGA
011 - COLUMBIA
013 - DELAWARE
014 - DUTCHESS
015 - ERIE
018 - FULTON
028 - MONROE
030 - NASSAU
031 - NEW YORK CITY
034 - ONONDAGA
036 - ORANGE
038 - OSWEGO
052 - SUFFOLK
055 - TOMPKINS
056 - ULSTER
060 - WESTCHESTER

34 = NORTH CAROLINA

011 - BUNCOMBE
 013 - CABARRUS
 032 - DURHAM
 033 - EDGEcombe
 034 - FORSYTH
 036 - GASTON
 039 - GRANVILLE
 041 - GUILFORD
 047 - HOKE
 054 - LENOIR
 060 - MECKLENBURG
 063 - MOORE
 077 - RICHMOND
 092 - WAKE

35 = NORTH DAKOTA

008 - BURLEIGH
 009 - CASS
 030 - MORTON

36 = OHIO

003 - ASHLAND
 004 - ASHTABULA
 009 - BUTLER
 012 - CLARK
 018 - CUYAHOGA
 021 - DELAWARE
 022 - ERIE
 023 - FAIRFIELD
 025 - FRANKLIN
 031 - HAMILTON
 035 - HENRY
 043 - LAKE
 047 - LORAIN
 048 - LUCAS
 050 - MAHONING
 057 - MONTGOMERY
 060 - MUSKINGUM
 072 - SANDUSKY
 074 - SENECA
 076 - STARK
 077 - SUMMIT
 078 - TRUMBULL
 079 - TUSCARAWAS
 082 - VINTON
 083 - WARREN

37 = OKLAHOMA

002 - ALFALFA
 054 - OKFUSKEE
 055 - OKLAHOMA
 063 - POTTAWATOMIE
 072 - TULSA

38 = OREGON

010 - DOUGLAS
 015 - JACKSON
 018 - KLAMATH
 020 - LANE
 024 - MARION
 026 - MULTNOMAH

39 = PENNSYLVANIA

002 - ALLEGHENY
 004 - BEAVER
 006 - BERKS
 007 - BLAIR
 009 - BUCKS
 011 - CAMBRIA
 015 - CHESTER
 021 - CUMBERLAND
 022 - DAUPHIN
 023 - DELAWARE
 026 - FAYETTE
 030 - GREENE
 031 - HUNTINGDON
 035 - LACKAWANNA
 036 - LANCASTER
 037 - LAWRENCE
 039 - LEHIGH
 040 - LUZERNE
 041 - LYCOMING
 046 - MONTGOMERY
 048 - NORTHAMPTON
 050 - PERRY
 051 - PIKE
 063 - WASHINGTON
 065 - WESTMORELAND
 067 - YORK

40 = RHODE ISLAND

004 - PROVIDENCE

41 = SOUTH CAROLINA

010 - CHARLESTON
 021 - FLORENCE
 040 - RICHLAND

42 = SOUTH DAKOTA

002 - AURORA
 017 - CUSTER
 050 - MINNEHAHA

43 = TENNESSEE

004 - BLEDSOE
 016 - COFFEE
 019 - DAVIDSON
 033 - HAMILTON
 047 - KNOX
 079 - SHELBY

44 = TEXAS

015 - BEXAR
 025 - BROWN
 049 - COOKE
 050 - CORYELL
 057 - DALLAS
 071 - EL PASO
 084 - GALVESTON
 101 - HARRIS
 113 - HOUSTON
 123 - JEFFERSON
 155 - MC LENNAN
 165 - MIDLAND
 178 - NUECES
 188 - POTTER
 220 - TARRANT
 227 - TRAVIS
 240 - WEBB

45 = UTAH

003 - CACHE
 004 - CARBON
 018 - SALT LAKE
 025 - UTAH
 029 - WEBER

46 = VERMONT

001 - ADDISON

47 = VIRGINIA

021 - CHESTERFIELD
 030 - FAIRFAX
 043 - HANOVER
 044 - HENRICO
 073 - POWHATAN
 078 - PULASKI
 082 - ROCKBRIDGE
 084 - RUSSELL
 101 - ALEXANDRIA
 105 - CHESAPEAKE
 119 - LYNCHBURG
 121 - NEWPORT NEWS
 122 - NORFOLK
 127 - RICHMOND
 128 - ROANOKE
 130 - STAUNTON

48 = WASHINGTON

003 - BENTON
 004 - CHELAN
 005 - CLALLAM
 006 - CLARK
 008 - COWLITZ
 013 - GRANT
 017 - KING
 018 - KITSAP
 021 - LEWIS
 023 - MASON
 025 - PACIFIC
 027 - PIERCE
 031 - SNOHOMISH
 032 - SPOKANE
 033 - STEVENS
 034 - THURSTON
 036 - WALLA WALLA
 037 - WHATCOM
 039 - YAKIMA

49 = WEST VIRGINIA

006 - CABELL
 013 - GREENBRIER
 017 - HARRISON
 020 - KANAWHA
 025 - MARION
 026 - MARSHALL

046 - TAYLOR
047 - TUCKER

50 = WISCONSIN

013 - DANE
027 - JACKSON
030 - KENOSHA
035 - LINCOLN
041 - MILWAUKEE
052 - RACINE
055 - RUSK
060 - SHEBOYGAN
068 - WAUKESHA

51 = WYOMING

017 - SHERIDAN

APPENDIX 5: OSIRIS III TYPE 3 DICTIONARY DESCRIPTION

This description of an OSIRIS III Type 3 dictionary was taken from OSIRIS III, Volume 1: System and Program Description, Release 2 Edition, Appendix D, published by Institute for Social Research, University of Michigan.

Dictionary-descriptor Record

Position	Content
1-3	Blanks
4	3: Type 3 dictionary
5-8	First variable number
9-12	Last variable number
13-16	1: Number of logical records per case
20	1: Format of variable location specification is starting location and field width
21-80	Blanks

Variable-descriptor Record

Position	Content
1	T: Variable descriptor record
2-5	Variable number
6	Blank
7-30	Variable name
31	Blank
32-35	Starting location of the variable within each data record
36-39	Field width of response 1-9: numeric variables 1-255: alphabetic variables
40	Number of decimal places 0-9: numeric variables 0: alphabetic variables
41	Character type and storage mode Blank: numeric, character mode 1: alphabetic, character mode
42	Variable type Blank: single response 1: multiple response
43-44	Number of responses If the variable has more than one response, columns 5-35 describe the first response and the remaining responses are assumed to be in adjacent fields of the same description.
45-51	First missing data code or blanks
52-58	Second missing data code or blanks
59-72	Blanks
73-75	File ID
76-80	Sequence number or blanks

END