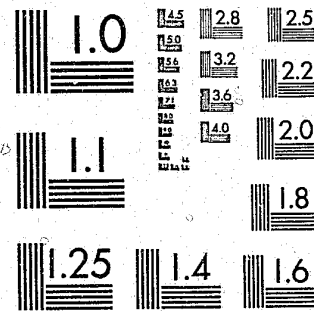


National Criminal Justice Reference Service



This microfiche was produced from documents received for inclusion in the NCJRS data base. Since NCJRS cannot exercise control over the physical condition of the documents submitted, the individual frame quality will vary. The resolution chart on this frame may be used to evaluate the document quality.



MICROCOPY RESOLUTION TEST CHART  
NATIONAL BUREAU OF STANDARDS-1963-A

Microfilming procedures used to create this fiche comply with the standards set forth in 41CFR 101-11.504.

Points of view or opinions stated in this document are those of the author(s) and do not represent the official position or policies of the U. S. Department of Justice.

National Institute of Justice  
United States Department of Justice  
Washington, D. C. 20531

5/31/85

INTER-UNIVERSITY CONSORTIUM FOR  
POLITICAL AND SOCIAL RESEARCH

ICPSR

96150

DELINQUENCY IN A BIRTH COHORT  
IN PHILADELPHIA PENNSYLVANIA,  
1945-1963: INDIVIDUAL FILE  
DELINQUENCY IN A BIRTH COHORT  
IN PHILADELPHIA PENNSYLVANIA,  
1945-1963: OFFENSE FILE

(ICPSR 7729)

PART 1

Principal  
Investigator

Marvin W. Wolfgang,  
Robert Figlio, and  
Thorsten Sellin

First ICPSR Edition, 1981

U.S. Department of Justice  
National Institute of Justice

This document has been reproduced exactly as received from the person or organization originating it. Points of view or opinions stated in this document are those of the authors and do not necessarily represent the official position or policies of the National Institute of Justice.

Permission to reproduce this copyrighted material has been granted by

Public Domain/NIJ  
U.S. Dept. of Justice

to the National Criminal Justice Reference Service (NCJRS).

Further reproduction outside of the NCJRS system requires permission of the copyright owner.

DELINQUENCY IN A BIRTH COHORT IN PHILADELPHIA  
PENNSYLVANIA, 1945-1963: INDIVIDUAL FILE

DELINQUENCY IN A BIRTH COHORT IN PHILADELPHIA  
PENNSYLVANIA, 1945-1963: OFFENSE FILE

(ICPSR STUDY 7729)

PRINCIPAL INVESTIGATORS

MARVIN E. WOLFGANG,  
ROBERT FIGLIO, AND  
THORSTEN SELLIN

INTER-UNIVERSITY CONSORTIUM FOR POLITICAL  
AND SOCIAL RESEARCH

P.O. BOX 1248

ANN ARBOR, MICHIGAN 48106

ICPSR EDITION  
FIRST PRINTING, 1980

ACKNOWLEDGEMENT OF ASSISTANCE

ALL MANUSCRIPTS UTILIZING DATA MADE AVAILABLE THROUGH THE CONSORTIUM SHOULD ACKNOWLEDGE THAT FACT AS WELL AS IDENTIFY THE ORIGINAL COLLECTOR OF THE DATA. THE ICPSR COUNCIL URGES ALL USERS OF THE ICPSR DATA FACILITIES TO FOLLOW SOME ADAPTATION OF THIS STATEMENT WITH THE PARENTHESES INDICATING ITEMS TO BE FILLED IN APPROPRIATELY OR DELETED BY THE INDIVIDUAL USER.

THE DATA (AND TABULATIONS) UTILIZED IN THIS (PUBLICATION) WERE MADE AVAILABLE (IN PART) BY THE INTER-UNIVERSITY CONSORTIUM FOR POLITICAL AND SOCIAL RESEARCH. THE DATA FOR DELINQUENCY IN A BIRTH COHORT IN PHILADELPHIA PENNSYLVANIA, 1945-1963: INDIVIDUAL FILE AND DELINQUENCY IN A BIRTH COHORT IN PHILADELPHIA PENNSYLVANIA, 1945-1963: OFFENSE FILE WERE ORIGINALLY COLLECTED BY MARVIN E. WOLFGANG, ROBERT FIGLIO, AND THORSTEN SELLIN. NEITHER THE COLLECTOR OF THE ORIGINAL DATA NOR THE CONSORTIUM BEAR ANY RESPONSIBILITY FOR THE ANALYSES OR INTERPRETATIONS PRESENTED HERE.

IN ORDER TO PROVIDE FUNDING AGENCIES WITH ESSENTIAL INFORMATION ABOUT THE USE OF ARCHIVAL RESOURCES AND TO FACILITATE THE EXCHANGE OF INFORMATION ABOUT ICPSR PARTICIPANTS' RESEARCH ACTIVITIES, EACH USER OF THE ICPSR DATA FACILITIES IS EXPECTED TO SEND TWO COPIES OF EACH COMPLETED MANUSCRIPT OR THESIS ABSTRACT TO THE CONSORTIUM. PLEASE INDICATE IN THE COVER LETTER WHICH DATA WERE USED.

TABLE OF CONTENTS

	PAGE NO.
INTRODUCTION	
STUDY DESCRIPTION	I
DATA COLLECTION PROCEDURES	II
FILE STRUCTURE	III
WEIGHTING INFORMATION	III
ICPSR PROCESSING INFORMATION	IV
CODEBOOK INFORMATION	V
VARIABLE DESCRIPTION LIST	VII
CODEBOOK: INDIVIDUAL FILE	1
GLOSSARY	15

NCJRS

JAN 7 1985

ACQUISITIONS

## STUDY DESCRIPTION

THE DELIQUENCY IN A BIRTH COHORT STUDY WAS DIRECTED BY MARVIN E. WOLFGANG, ROBERT FIGLIO, AND THORNSTEN SELLIN. THE RESEARCH WAS SUPPORTED BY THE NATIONAL INSTITUTE OF MENTAL HEALTH.

THE STUDY IS AN ANALYSIS OF A COHORT OF 9,944 BOYS BORN IN 1945 WHO LIVED IN PHILADELPHIA, PENNSYLVANIA FROM AGES 10 THROUGH 18. DATA FOR THE ANALYSIS WERE COLLECTED FROM THE RECORDS OF THE PHILADELPHIA PUBLIC, PRIVATE, AND PAROCHIAL SCHOOLS, AND FROM THE RECORDS OF THE PHILADELPHIA POLICE DEPARTMENT'S JUVENILE AID DIVISION. THE LATTER DATA PERMITTED THE INVESTIGATORS TO DETERMINE WHICH MEMBERS OF THE COHORT HAD OFFICIAL CONTACTS WITH POLICE, AND TO TRACE VOLUME, FREQUENCY, AND CHARACTER OF THE SUBJECTS' DELINQUENT CAREERS. EXAMINING THESE CAREERS AS A STOCHASTIC PROCESS AND APPLYING WEIGHTS OF SEVERITY TO ACTS OF DELINQUENCY CONSTITUTES A MAJOR PART OF THIS RESEARCH.

MUCH OF THE RESEARCH CONSIDERED FOUR QUESTIONS: WHEN THE DELIQUENCY OF A COHORT BOY FIRST BROUGHT HIM TO THE ATTENTION OF THE POLICE; WHETHER HE DESISTED FROM OR PERSISTED IN COMMITTING FURTHER DELINQUENT ACTS; THE EXTENT OF HARM INFLICTED TO THE COMMUNITY BY HIS MISDEEDS; AND WHETHER THE SERIOUSNESS OF HIS DELINQUENT ACTIVITIES INCREASED OR DECREASED WITH AGE.

THE TWO FILES USED IN THIS STUDY WERE A INDIVIDUAL AND AN OFFENSE FILE. THE INDIVIDUAL FILE WAS COMPILED FROM SCHOOL RECORDS AND CONTAINS INFORMATION SUCH AS PARENTS' COUNTRY OF ORIGIN, I. Q. SCORES, AND NUMBER OF UNEXCUSED ABSENCE FOR ALL SUBJECTS IN THE STUDY. THE OFFENSE FILE CONTAINS INFORMATION CONCERNING SUBJECTS WHO WERE INVOLVED WITH THE POLICE AT LEAST ONCE WHEN AN OFFICIAL RECORDING OF THE ACT RESULTED. THE OFFENSE FILE CONTAINS A FULL DESCRIPTION OF THE CRIME INCIDENT, INCLUDING ASPECTS OF PHYSICAL INJURY, THEFT, OR PROPERTY DAMAGE, USE OF WEAPONS, AND RELEVANT INFORMATION ABOUT THE VICTIM. AS MANY AS 39 SEPARATE CRIMES WERE REPORTED PER SUBJECT.

ANALYSES OF THE STUDY RESULTS ARE PRESENTED IN:

MARVIN E. WOLFGANG, ROBERT FIGLIO, AND THORSTEN SELLIN,  
DELIQUENCY IN A BIRTH COHORT, CHICAGO, ILL.: UNIVERSITY OF  
CHICAGO PRESS, 1972.

## DATA COLLECTION PROCEDURES

THE COHORT IN THIS STUDY WAS LIMITED TO BOYS WHO WERE BORN IN 1945 AND LIVED IN PHILADELPHIA PENNSYLVANIA FROM THE AGES OF 10 THROUGH 18. THE UNIVERSE WAS LIMITED TO BOYS DUE TO THE RESEARCHERS' BELIEF THAT DELINQUENCY IS PREDOMINANTLY A MALE PHENOMENON.

THE REQUIREMENT THAT THE SUBJECTS MAINTAIN RESIDENCY IN PHILADELPHIA BETWEEN AGES 10 AND 18 ASSURED THE RESEARCHERS OF CONSISTENTLY RECORDED INFORMATION ABOUT SUBJECTS' CONTACTS WITH POLICE. THE COHORT THAT WAS PRESENT IN THE CITY HAD THE SAME URBAN ENVIRONMENT OVER A CRITICAL SPAN OF TIME, THE SAME GENERAL SET OF CULTURAL FORCES, THE SAME POLICE, SCHOOL, AND OTHER AGENCIES OF RESPONSE TO JUVENILE CONDUCT.

THREE SOURCES WERE USED TO GATHER DATA CONCERNING SUBJECTS AND TO VERIFY THEIR RESIDENCE IN PHILADELPHIA FROM AGES 10 THROUGH 18. THE CHIEF METHOD FOR OBTAINING THE COHORT WAS EXAMINATION OF PUBLIC, PAROCHIAL (CATHOLIC), AND PRIVATE (NON-PUBLIC, EXCLUDING CATHOLIC) SCHOOL RECORDS. SCRUTINY OF THE PUBLIC SCHOOL SYSTEM'S CENTRAL FILE REGARDING REGISTRATION, ATTRITION, AND CERTAIN SUBJECTIVE FACTORS FOR MALES BORN IN 1945 DETERMINED WHETHER BOYS WERE INCLUDED IN OR EXCLUDED FROM THE COHORT, OR WHETHER MORE INFORMATION WAS NEEDED PRIOR TO DESIGNATION. NEITHER PAROCHIAL NOR PRIVATE SCHOOLS, HOWEVER, MAINTAINED A CENTRAL FILING SYSTEM. INDIVIDUAL SCHOOLS WERE THEREFORE VISITED AND RELEVANT INFORMATION EXTRACTED FROM EACH OF THE VARIOUS FILING SYSTEMS. CONTENT OF RECORDS ALSO DIFFERED BETWEEN THE THREE SCHOOL SYSTEMS. CERTAIN "SOFT" DATA SUCH AS INFORMATION REGARDING EMOTIONAL MATURITY AND ACHIEVEMENT LEVELS WERE AVAILABLE ONLY IN PUBLIC SCHOOL RECORDS, AND ALL SCHOOL SYSTEMS USED VARIED INTELLIGENCE TESTS.

THE SECOND SOURCE OF INFORMATION WAS THE RECORDS OF THE JUVENILE AID DIVISION OF THE PHILADELPHIA POLICE DEPARTMENT. A MASTER RECORD FILE, MAINTAINED SINCE 1953, LISTED ALL JUVENILES WHO HAD POLICE CONTACT WHICH RESULTED IN A WRITTEN REPORT. THE RECORDS OF ALL BOYS BORN IN 1945 WERE PHOTOCOPIED AND, USING NAME, SPECIFIC DATE OF BIRTH, RACE, AND OTHER IDENTIFYING INFORMATION, MATCHED WITH A PUBLIC, PRIVATE, OR PAROCHIAL SCHOOL RECORD WHEN POSSIBLE.

SELECTIVE SERVICE RECORDS PROVIDED THE THIRD SOURCE OF INFORMATION. BOYS' NAMES WERE CHECKED AGAINST THESE RECORDS TO CONFIRM THEIR PRESENCE IN PHILADELPHIA AT AGE 18, REGARDLESS OF WHETHER THEY GRADUATED PRIOR TO AGE 18 OR BECAME EMPLOYED AT AGE 16 AFTER REACHING THE

END OF COMPULSORY EDUCATION. FOR A COMPLETE EXPLANATION OF THE DATA COLLECTION PROCEDURE AND TYPE OF DATA OBTAINED SEE DELINQUENCY IN A BIRTH COHORT BY MARVIN WOLFGANG (CHAPTERS 1-3).

## FILE STRUCTURE

THE DELINQUENCY IN A BIRTH COHORT IN PHILADELPHIA, PENNSYLVANIA, 1945-1963 INDIVIDUAL AND OFFENSE FILES ARE AVAILABLE FROM ICPSR IN TWO FORMATS, A CARD IMAGE FILE AND AN OSIRIS DATASET. THE CARD IMAGE FILE CONTAINS 2 DECKS PER CASE IN A FORMAT BASED ON 80 COLUMN PUNCHED CARDS FOR BOTH FILES. THE DATA ARE SORTED BY SUBJECT WITH ALL DECKS FOR A CASE COMBINED TOGETHER IN ASCENDING ORDER.

THE OSIRIS DICTIONARY GIVES THE FORMAT AND OTHER INFORMATION FOR EACH VARIABLE IN THE OSIRIS DATA FILE. THE DICTIONARY OR DICTIONARY-CODEBOOK FILE IS USED IN CONJUNCTION WITH THE OSIRIS SOFTWARE PACKAGE. THE OSIRIS DATA FILE FOR THE INDIVIDUAL FILE IS CONSTRUCTED WITH A SINGLE RECORD OF 86 COLUMNS FOR EACH CASE. THE OFFENSE FILE IS CONSTRUCTED WITH A RECORD OF 98 COLUMNS FOR EACH CASE. THERE ARE 48 VARIABLES ON 9,944 CASES FOR THE INDIVIDUAL FILE AND 43 VARIABLES ON 10,214 CASES FOR THE OFFENSE FILE.

THE OSIRIS DATA FILE CAN BE ACCESSED THROUGH SOFTWARE PACKAGES OR PROGRAMS WHICH DO NOT USE THE OSIRIS DICTIONARY BY SPECIFYING THE TAPE LOCATIONS OF THE DESIRED VARIABLES. THESE TAPE LOCATIONS ARE GIVEN IN THE OSIRIS DICTIONARY-CODEBOOK.

## WEIGHTING INFORMATION

IN PRIOR RESEARCH THE PRINCIPAL INVESTIGATORS DEVELOPED A SYSTEM FOR ASSESSING THE DEGREE OF SOCIAL INJURY CAUSED BY A DELINQUENT EVENT. USING THIS SYSTEM THEY WERE ABLE TO ASSIGN A SCORE VALUE TO AN EVENT, DEPENDING ON WEIGHTS GIVEN TO CERTAIN OF ITS ELEMENTS. FOR INSTANCE, A SIMPLE PHYSICAL ASSAULT RESULTING ONLY IN AN INJURY REQUIRING TEMPORARY MEDICAL ATTENTION WOULD RECEIVE A SCORE OF 2, WHILE THE COMPLEX EVENT OF AN ASSAULT WHICH ENTAILED THE HOSPITALIZATION OF TWO VICTIMS AFTER THEIR BEING INTIMIDATED BY A DANGEROUS WEAPON, BEATEN, AND HAVING HAD THEIR WALLETS STOLEN MIGHT RECEIVE A SCORE OF 23 OR MORE DEPENDING ON THE

AMOUNT OF CURRENCY TAKEN. IN TRADITIONAL CRIMINAL STATISTICS, THESE TWO OFFENSES WOULD EACH BE GIVEN A SCORE OF 1 AND SEPARATED BY ASSIGNING THE Milder ASSAULT CASE TO THE CLASS OF SIMPLE ASSAULT AND THE MORE SERIOUS ONE TO THAT OF AGGRAVATED ASSAULT BASED ON THE DEFINITIONS IN THE CRIMINAL CODE. WITH THE INVESTIGATORS' SYSTEM, THE LATTER EVENT WOULD FALL INTO A CLASS OF OFFENSES CAUSING PHYSICAL INJURY TO A VICTIM AND NOT MERELY BE COUNTED AS TWO AGGRAVATED ASSAULTS. FOR A BRIEF EXPLANATION OF THE DEVELOPMENT AND UTILIZATION OF THE WEIGHTING SYSTEM IN THE PRESENT STUDY SEE THE GLCSSARY.

ICPSR PROCESSING INFORMATION

THE STUDY WAS PROCESSED ACCORDING TO THE STANDARD ICPSR PROCESSING PROCEDURES. THE DATA WERE CHECKED FOR ILLEGAL OR INCONSISTENT CODE VALUES WHICH, WHEN FOUND, WERE RECODED TO OSIRIS MISSING DATA VALUES. NO CONSISTENCY CHECKS WERE PERFORMED. STATEMENTS BRACKETED IN "<" AND ">" SIGNS IN THE BODY OF THE CODEBOOK WERE ADDED BY THE PROCESSORS FOR EXPLANATORY PURPOSES. THE ARCHIVAL PROCESSING OF THIS STUDY WAS DONE BY DAVID SCHREIBER, WITH ASSISTANCE FROM JOYCE HAMRICK.

CODEBOOK INFORMATION

THE EXAMPLE BELOW IS A REPRODUCTION OF INFORMATION APPEARING IN THE MACHINE-READABLE CODEBOOK FOR A TYPICAL VARIABLE. THE NUMBERS IN BRACKETS DO NOT APPEAR BUT ARE REFERENCES TO THE DESCRIPTIONS WHICH FOLLOW THIS EXAMPLE.

.....  
 [ 1 ] VAR 0018      [ 2 ] RETARDED                      [ 3 ] MD=9  
           REF 0018      [ 4 ] LOC 31      WIDTH 1    [ 5 ] DK - COL --

[ 6 ] RETARDED CLASS  
 -----

[ 7 ] -----

[ 8 ] -----

- [ 9 ] [ 10 ]  
 0. NO  
 1. YES  
 2. UNKNOWN

- .....
- [ 1 ] INDICATES THE VARIABLE AND REFERENCE NUMBERS. A VARIABLE AND REFERENCE NUMBER ARE ASSIGNED TO EACH ITEM IN THE STUDY. IN THIS CODEBOOK WHICH DOCUMENTS THE ARCHIVED DATASET THESE NUMBERS ARE IDENTICAL. SHOULD THE DATA BE DISSEMINATED IN A DIFFERENT STRUCTURE, NEW VARIABLE NUMBERS MAY BE ASSIGNED OR CREATED. THE REFERENCE NUMBER WOULD REMAIN UNCHANGED AND CORRESPOND TO THOSE IN THIS CODEBOOK.
  - [ 2 ] INDICATES THE ABBREVIATED (24 CHARACTER MAXIMUM) VARIABLE LABEL USED WITHIN OSIRIS TO IDENTIFY EACH VARIABLE. AN EXPANDED VERSION CAN BE FOUND IN THE VARIABLE DESCRIPTION LIST.
  - [ 3 ] INDICATES THE DESIGNATION OF MISSING DATA. IN

THIS EXAMPLE, CODE VALUES EQUAL TO 9 ARE MISSING DATA (MD=9). ALTERNATIVE STATEMENTS FOR OTHER VARIABLES ARE "MD=0 OR GE 9", "MD GE 9", OR "NO MISSING DATA CODES". SOME ANALYSIS SOFTWARE PACKAGES (INCLUDING THE ICPSR-SUPPORTED PACKAGE) REQUIRE THAT CERTAIN TYPES OF DATA WHICH THE USER DESIRES TO BE EXCLUDED FROM ANALYSIS BE DESIGNATED AS "MISSING DATA" E.G., INAPPROPRIATE, UNASCERTAINED, UNASCERTAINABLE, OR AMBIGUOUS DATA CATEGORIES. ALTHOUGH THIS VALUE IS DEFINED AS WITHIN THE MISSING DATA CATEGORY, THIS DOES NOT MEAN THAT USERS SHOULD NOT OR CANNOT USE THIS CODE VALUE IN A SUBSTANTIVE ROLE IF THEY SO DESIRE.

- [4] INDICATES THE SEQUENTIAL LOCATION AND WIDTH OF THIS VARIABLE WITHIN THE RECORD WHEN THE DATA ARE STORED ON MAGNETIC TAPE. IN THIS EXAMPLE THE VARIABLE NAMED "RETARDED" IS ONE COLUMN WIDE AND LOCATED IN THE 31ST COLUMN WITHIN THE RECORD.
- [5] INDICATES THE LOCATION BY DECK AND COLUMN(S) OF THIS VARIABLE WHEN THE DATA ARE STORED ON CARDS OR IN CARD IMAGE FORMAT.
- [6] INDICATES THE FULL TEXT OF THE VARIABLE DESCRIPTION SUPPLIED BY THE ORIGINAL COLLECTOR OF THE DATA. THE NUMBERS AND LETTERS THAT MAY APPEAR AT THE BEGINNING ARE QUESTION NUMBERS FROM THE SURVEY FORMS.
- [7] INDICATES AN ADDITIONAL COMMENT OR EXPLANATION APPENDED TO THE VARIABLE DESCRIPTION.
- [8] A VARIABLE WHICH HAS A FOOTNOTE ASSOCIATED WITH IT IS DENOTED BY THE MESSAGE, "SEE NOTE(S) X" WHERE X IS THE NUMBER OF THE FOOTNOTE REFERENCED.
- [9] INDICATES THE CODE VALUES OCCURRING IN THE DATA FOR THIS VARIABLE.
- [10] INDICATES THE TEXTUAL DEFINITIONS OF THE CODES.

## VARIABLE DESCRIPTION LIST FOR OFFENSE FILE

### ICPSR PROCESSING VARIABLES

1. ICPSR STUDY NUMBER - 7729
2. ICPSR VERSION NUMBER - 1
3. ICPSR PART NUMBER - 2
4. SEQUENTIAL IDENTIFICATION NUMBER

### INFORMATION ON OFFENSE

5. TOTAL NUMBER OF OFFENSES BY OFFENDER
6. RANK NUMBER OF HIS OFFENSE
7. THE PHILADELPHIA CRIME CODE
8. DISPOSITION OF THIS OFFENSE
9. YEAR OF THIS OFFENSE
10. MONTH OF THIS OFFENSE
11. DAY OF THIS OFFENSE
12. SERIOUSNESS SCORE

### OFFENDER DEMOGRAPHICS

13. OFFENDER AGE
14. RACE OF OFFENDER
15. NUMBER OF JUVENILE OFFENDERS
16. AVERAGE AGE OF OFFENDER
17. NUMBER OF WHITE JUVENILE OFFENDERS PRESENT
18. NUMBER OF NON-WHITE JUVENILE OFFENDERS PRESENT
19. NUMBER OF MALE JUVENILE OFFENDERS PRESENT
20. NUMBER OF FEMALE JUVENILE OFFENDERS PRESENT

### VICTIM DEMOGRAPHICS

21. AVERAGE AGE OF VICTIMS OR AGE OF SINGLE VICTIM
22. NUMBER OF WHITE VICTIMS
23. NUMBER OF NON-WHITE VICTIMS
24. NUMBER OF MALE VICTIMS
25. NUMBER OF FEMALE VICTIMS
26. NUMBER OF DEATHS
27. NUMBER OF PERSONS HOSPITALIZED
28. NUMBER OF PERSONS TREATED FOR INJURY AND DISCHARGED
29. NUMBER OF PERSONS REQUIRING NO HOSPITALIZATION

VARIABLE DESCRIPTION LIST FOR OFFENSE FILE

CRIME DEMOGRAPHICS

- 30. DOLLAR AMOUNT OF THEFT, ACTUAL CASH + DOLLAR VALUE
- 31. DAMAGE IN DOLLARS
- 32. ANY PHYSICAL INJURY
- 33. ANY THEFT
- 34. ANY DAMAGE
- 35. WEAPONS PRESENT DURING OFFENSE
- 36. VICTIMIZATION TYPE IN THIS OFFENSE

OFFENDER INFORMATION

- 37. NUMBER OF ADULT OFFENDERS
- 38. INCOME GROUP OF OFFENDER
- 39. OFFENSE TYPE OF THIS OFFENSE
- 40. OFFENDER IS A SINGLE OR MULTIPLE OFFENDER
- 41. OFFENSE CLASS A
- 42. OFFENSE CLASS B
- 43. AGE, IN MONTHS FROM BIRTH, AT TIME OF OFFENSE

DECK IDENTIFICATION NUMBER IS '01'

DK 1 COL 1- 2

VAR 0001 ICPSR STUDY NUMBER 7729 NO MISSING DATA CODES  
REF 0001 LOC 1 WIDTH 4 DK 1 COL 3- 6

ICPSR STUDY NUMBER

7729. THE ICPSR HAS ATTACHED THIS NUMBER AS A STUDY IDENTIFICATION NUMBER.

VAR 0002 VERSION 1 NO MISSING DATA CODES  
REF 0002 LOC 5 WIDTH 1 DK 1 COL 7

ICPSR VERSION NUMBER

1. THIS IS THE FIRST ICPSR VERSION OF THE STUDY.

VAR 0003 PART NUMBER 1 NO MISSING DATA CODES  
REF 0003 LOC 6 WIDTH 1 DK 1 COL 8

ICPSR PART NUMBER

1. THIS STUDY IS CONTAINED IN TWO FILES. FIRST, THE INDIVIDUAL FILE AND SECOND, THE OFFENSE FILE. THIS IS THE FIRST OF THE TWO FILES.

VAR 0004 IDENTIFICATION NUMBER NO MISSING DATA CODES  
REF 0004 LOC 7 WIDTH 5 DK 1 COL 9-13

SEQUENTIAL IDENTIFICATION NUMBER

A CASE IDENTIFICATION NUMBER HAS BEEN ATTACHED TO EVERY



(CONTINUED)

RECORD. THIS NUMBER UNIQUELY IDENTIFIES EACH RECORD  
IN THIS SURVEY.

VAR 0005 RACE MD=9  
REF 0005 LOC 12 WIDTH 1 DK 1 COL 14

RACE OF SUBJECT

- 0. WHITE, OTHER THAN PUERTO RICAN
- 1. NEGRO
- 2. WHITE, PUERTO RICAN
- 3. ORIENTAL
- 4. OTHFR
- 9. RACE UNKNOWN

VAR 0006 REGION OF BIRTH: SUBJECT MD=GE 98  
REF 0005 LOC 13 WIDTH 2 DK 1 COL 15-16

REGION OF BIRTH OF SUBJECT

- 00. PHILADELPHIA
- 01. MIDDLE ATLANTIC, NOT PHILADELPHIA
- 02. SOUTH ATLANTIC
- 03. EAST SOUTH CENTRAL
- 04. NEW ENGLAND
- 05. EAST NORTH CENTRAL
- 06. WEST NORTH CENTRAL
- 07. WEST SOUTH CENTRAL
- 08. WEST, INCLUDES MOUNTAIN AND PACIFIC
- 09. PUERTO RICO
- 11. OTHER U.S. (TERRITORIES AND POSSESSIONS) OR PLACE NOT SPECIFIED
- 12. NOT BORN IN U.S.
- 98. MISSING

VAR 0007 SIZE OF BIRTHPLACE: SUBJ MD=9  
REF 0007 LOC 15 WIDTH 1 DK 1 COL 17

SIZE OF SUBJECT BIRTH PLACE

- 0. PHILADELPHIA
- 1. METROPOLITAN AREA NOT PHILADELPHIA
- 2. IN DIRECTORY AND NOT METROPOLITAN
- 3. NOT IN DIRECTORY
- 9. UNKNOWN

VAR 0008 FATHER BORN IN U.S.A. MD=9  
REF 0008 LOC 16 WIDTH 1 DK 1 COL 18

FATHER BORN IN U.S.

- 0. NO
- 1. YES
- 9. NO INFORMATION GIVEN

VAR 0009 MOTHER BORN IN U.S.A. MD=9  
REF 0009 LOC 17 WIDTH 1 DK 1 COL 19

MOTHER BORN IN U.S.

- 0. NO
- 1. YES
- 9. NO INFORMATION GIVEN

VAR 0010 NO. DIFFERENT ADDRESSES MD=99  
REF 0010 LOC 18 WIDTH 2 DK 1 COL 20-21

NUMBER OF DIFFERENT ADDRESSES  
-----

ACTUAL NUMBER 1 TO 23 CODED

99. MISSING

VAR 0011 YEAR STARTED SCHOOL/PH. MD=7  
REF 0011 LOC 20 WIDTH 1 DK 1 COL 22

YEAR OF ENTRY INTO PHILADELPHIA SCHOOL SYSTEM  
(PUBLIC, PAROCHIAL OR PRIVATE)  
-----

- 9. 1949
- 0. 1950
- 1. 1951
- 2. 1952
- 3. 1953
- 4. 1954
- 5. 1955
- 6. BEFORE 1955 IF YEAR NOT GIVEN
- 7. MISSING

VAR 0012 REGION SCHL FIRST BEGUN MD=99 OR GE 98  
REF 0012 LOC 21 WIDTH 2 DK 1 COL 23-24

FIRST SOURCE OF ENTRY (REGION) INTO SCHOOL SYSTEM  
-----

- 00. PHILADELPHIA
- 01. MIDDLE ATLANTIC, NOT PHILADELPHIA
- 02. SOUTH ATLANTIC
- 03. EAST SOUTH CENTRAL
- 04. NEW ENGLAND

(CONTINUED)

- 05. EAST NORTH CENTRAL
- 06. WEST NORTH CENTRAL
- 07. WEST SOUTH CENTRAL
- 08. WEST, INCLUDES MOUNTAIN AND PACIFIC
- 09. PUERTO RICO
- 10. OTHER U.S. (TERRITORIES AND POSSESSIONS) OR PLACE NOT SPECIFIED
- 11. NOT BORN IN U.S.
- 98. MISSING
- 99. UNKNOWN

VAR 0013 YEAR OF EXIT FROM SCHL MD=GE 99  
REF 0013 LOC 23 WIDTH 2 DK 1 COL 25-26

YEAR OF EXIT (LAST DATE IN SCHOOL SYSTEM)  
-----

- 06. BEFORE 1957
- 07. 1957
- 08. 1958
- 09. 1959
- 00. 1960
- 01. 1961
- 02. 1962
- 03. 1963
- 04. 1964
- 05. 1965
- 98. STILL ENROLLED
- 99. UNKNOWN

VAR 0014 EXIT CODE MD=99  
REF 0014 LOC 25 WIDTH 2 DK 1 COL 27-28

EXIT CODE  
-----

- 01. GRADUATED
- 02. GRADUATE CERTIFICATE
- 03. STILL ENROLLED
- 04. OTHER

{CONTINUED}

99. UNKNOWN

.....

VAR 0015      TOTAL SCHOOL YEARS      MD=99  
 REF 0015      LOC    27 WIDTH 2      DK    1 COL 29-30

TOTAL NUMBER OF SCHOOL YEARS

<THIS WAS AS OF THE COLIFCTION OF DATA IN 1963.>

ACTUAL NUMBER OF YEARS 4 TO 16 IS CODED

99. UNKNOWN

.....

VAR 0016      REMEDIAL DISCIPLINARY      MD=9  
 REF 0016      LOC    29 WIDTH 1      DK    1 COL 31

REMEDIAL DISCIPLINARY CLASS

- 0. NO
- 1. YES

9. UNKNOWN

.....

VAR 0017      HANDICAPPED      MD=9  
 REF 0017      LOC    30 WIDTH 1      DK    1 COL 32

HANDICAPPED CLASS

- 0. NO
- 1. YES

9. UNKNOWN

VAR 0018      RETARDED      MD=9  
 REF 0018      LOC    31 WIDTH 1      DK    1 COL 33

RETARDED CLASS

- 0. NO
- 1. YES

9. UNKNOWN

.....

VAR 0019      DISCIPLINARY      MD=9  
 REF 0019      LOC    32 WIDTH 1      DK    1 COL 34

DISCIPLINARY SCHOOL

- 0. NO
- 1. YES

9. UNKNOWN

.....

VAR 0020      HIGHEST GRADE COMPLETED      MD=99  
 REF 0020      LOC    33 WIDTH 2      DK    1 COL 35-36

HIGHEST GRADE COMPLETED

00. NO GRADE

:

12. TWELVE GRADES COMPLETED

99. UNKNOWN

VAR 0021 MAJOR STATUS: ELEMENTARY MD=9 OR GE 7  
REF 0021 LOC 35 WIDTH 1 DK 1 COL 37

MAJOR STATUS: ELEMENTARY SCHOOL  
-----

- 0. PUBLIC
- 1. PAROCHIAL
- 2. PRIVATE
- 3. INSTITUTION
- 4. DISCIPLINARY
- 5. INSTITUTION NOT DISCIPLINARY
- 6. HOME SCHOOL
  
- 7. INCOMPLETE
- 9. UNKNOWN

VAR 0022 MAJOR STATUS: JUNIOR MD=9 OR GE 7  
REF 0022 LOC 36 WIDTH 1 DK 1 COL 38

MAJOR STATUS: JUNIOR HIGH SCHOOL  
-----

<THE PAROCHIAL SCHOOLS AND MANY PRIVATE SCHOOLS DO NOT HAVE  
A DESIGNATED JUNIOR HIGH SCHOOL LEVEL.>

- 0. PUBLIC
- 1. PAROCHIAL
- 2. PRIVATE
- 3. INSTITUTION
- 4. DISCIPLINARY
- 5. INSTITUTION NOT DISCIPLINARY
- 6. HOME SCHOOL
  
- 7. INCOMPLETE
- 9. UNKNOWN

VAR 0023 MAJOR STATUS: SENIOR MD=9 OR GE 7  
REF 0023 LOC 37 WIDTH 1 DK 1 COL 39

MAJOR STATUS: SENIOR HIGH SCHOOL  
-----

(CONTINUED)

- 0. PUBLIC
- 1. PAROCHIAL
- 2. PRIVATE
- 3. INSTITUTION
- 4. DISCIPLINARY
- 5. INSTITUTION NOT DISCIPLINARY
- 6. HOME SCHOOL
  
- 7. INCOMPLETE
- 9. UNKNOWN

VAR 0024 NO. DIFFERENT SCHOOLS MD=99  
REF 0024 LOC 38 WIDTH 2 DK 1 COL 40-41

NUMBER OF DIFFERENT SCHOOLS ATTENDED  
-----

<THIS WAS AS OF THE COLLECTION OF DATA IN 1963.>

ACTUAL NUMBER 1 TO 15 CODED

- 99. UNKNOWN

VAR 0025 UNEXCUSED ABSENCES/1ST MD=99  
REF 0025 LOC 40 WIDTH 2 DK 1 COL 42-43

NUMBER OF UNEXCUSED ABSENCES IN FIRST HALF  
-----

SCCHOOLING DIVIDED GRADES 1-6 AND 7-12. DATA FOR PUBLIC  
SCHOOL STUDENTS ONLY.

ACTUAL NUMBER 0 TO 98 IS CODED

- 99. NO INFORMATION

VAR 0026 UNEXCUSED ABSENCES/2ND MD=99  
REF 0026 LOC 42 WIDTH 2 DK 1 COL 44-45

NUMBER OF UNEXCUSED ABSENCES IN SECOND HALF

<SCHOOLING DIVIDED GRADE 1-6 AND 7-12. DATA FOR PUBLIC SCHOOL STUDENTS ONLY.>

ACTUAL NUMBER 0 TO 98 IS CODED

99. NO INFORMATION

VAR 0027 ACHIEVEMENT LEVEL MD=9  
REF 0027 LOC 44 WIDTH 1 DK 1 COL 46

ACHIEVEMENT LEVEL OF SUBJECT

<RATING GENERALLY ASSIGNED TO ELEMENTARY SCHOOL STUDENTS. DATA FOR PUBLIC SCHOOL SYSTEM ONLY.>

- 0. VERY LOW (MORE THAN TWO YEARS BEHIND AVERAGE)
- 1. LOW (UP TO TWO YEARS BEHIND AVERAGE)
- 2. AVERAGE
- 3. HIGH (UP TO TWO YEARS ABOVE AVERAGE)
- 4. VERY HIGH (MORE THAN TWO YEARS ABOVE AVERAGE)
- 9. NO VALUES GIVEN

VAR 0028 FIRST I.Q., YEAR MD=99  
REF 0028 LOC 45 WIDTH 2 DK 1 COL 47-48

FIRST I.Q., YEAR

- 00. NO I.Q. LISTED
- 50. BEFORE 1951
- 51. 1951

(CONTINUED)

65. 1965

99. NO YEAR GIVEN

VAR 0029 FIRST I.Q., SCORE MD=999  
REF 0029 LOC 47 WIDTH 3 DK 1 COL 49-51

FIRST I.Q., SCORE

ACTUAL SCORE 25 TO 170 IS CODED

999. NONE LISTED

VAR 0030 FIRST I.Q., TYPE MD=99  
REF 0030 LOC 50 WIDTH 2 DK 1 COL 52-53

FIRST I.Q., TYPE

- 00. PHILADELPHIA
- 01. WISCONSIN
- 02. OTIS BETA
- 03. OTIS GAMMA
- 04. OTIS ALPHA
- 05. WECHSLER BELLEVUE
- 06. STANFORD BINET
- 07. HENIMAN-NEILSON
- 08. OHA
- 09. GAT
- 10. OTIS EM
- 11. S.R.A.
- 12. OTISP
- 13. PITNER
- 14. KUL. ANDERSON
- 15. P.C.
- 16. THORNDIKE
- 17. DETROIT REV.
- 18. CAL 50 - S

(CONTINUED)

- 19. CAL M - M
- 20. CAL PLAC
- 21. NON-VERBAL
- 22. O-VERB
- 23. CAL. ENG. FAC.
- 24. CAL. MAST. LANG.
- 25. W.A.I.S.
- 26. KFTM
- 27. OTIS C

99. UNKNOWN

.....  
 VAR 0031 MIDDLE I.Q., YEAR MD=99  
 REF 0031 LOC 52 WIDTH 2 DK 1 COL 54-55

MIDDLE I.Q., YEAR  
 -----

- 00. NO I.Q. LISTED
- 50. BEFORE 1951
- 51. 1951
- .
- .
- 65. 1965
- 99. NO YEAR GIVEN

.....  
 VAR 0032 MIDDLE I.Q., SCORE MD=999  
 REF 0032 LOC 54 WIDTH 3 DK 1 COL 56-58

MIDDLE I.Q., SCORE  
 -----

ACTUAL SCORE 10 TO 150 IS CODED

999. NONE LISTED

VAR 0033 MIDDLE I.Q., TYPE MD=99  
 REF 0033 LOC 57 WIDTH 2 DK 1 COL 59-60

MIDDLE I.Q., TYPE  
 -----

- 00. PHILADELPHIA
- 01. WISCONSIN
- 02. OTIS BETA
- 03. OTIS GAMMA
- 04. OTIS ALPHA
- 05. WECHSLER BELLEVUE
- 06. STANFORD BINET
- 07. HENIMAN-NELSON
- 08. OHA
- 09. GAT
- 10. OTIS EM
- 11. S.P.A.
- 12. OTISR
- 13. PITNER
- 14. KUL. ANDERSON
- 15. P.C.
- 16. THORNDIKE
- 17. DETROIT REV.
- 18. CAL 50 - S
- 19. CAL M - M
- 20. CAL PLAC
- 21. NON-VERBAL
- 22. O-VERB
- 23. CAL. ENG. FAC.
- 24. CAL. MAST. LANG.
- 25. W.A.I.S.
- 26. KFTM
- 27. OTIS C
- 99. UNKNOWN

.....  
 VAR 0034 LAST I.Q., YEAR MD=99  
 REF 0034 LOC 59 WIDTH 2 DK 1 COL 61-62

LAST I.Q., YEAR  
 -----

- 00. NO I.Q. LISTED
- 50. BEFORE 1951

(CONTINUED)

51. 1951  
.  
.  
65. 1965  
99. NO YEAR GIVEN

VAR 0035 LAST I.Q., SCORE MD=999  
REF 0035 LOC 61 WIDTH 3 DK 1 COL 63-65

LAST I.Q., SCORE

ACTUAL SCORE 14 TO 150 IS CODED

999. NONE LISTED

VAR 0036 LAST I.Q., TYPE MD=99  
REF 0036 LOC 64 WIDTH 2 DK 1 COL 66-67

LAST I.Q., TYPE

00. PHILADELPHIA  
01. WISCONSIN  
02. OTIS BETA  
03. OTIS GAMMA  
04. OTIS ALPHA  
05. WECHSLER BELLEVUE  
06. STANFORD BINET  
07. HENIMAN-NELSON  
08. OHA  
09. GAT  
10. OTIS EM  
11. S.R.A.  
12. OTISR  
13. PITNER  
14. KUL. ANDERSON  
15. P.C.  
16. THORNDIKE

(CONTINUED)

17. DETROIT REV.  
18. CAL 50 - S  
19. CAL M - M  
20. CAL PLAC  
21. NON-VERBAL  
22. 0-VERB  
23. CAL. ENG. FAC.  
24. CAL. MAST. LANG.  
25. W.A.I.S.  
26. KFTM  
27. OTIS C  
99. UNKNOWN

VAR 0037 FILE: PUBLIC MD=9  
REF 0037 LOC 66 WIDTH 1 DK 1 COL 68

FILE TYPE USED: PUBLIC

0. NO  
1. YES  
9. MISSING

VAR 0038 FILE: PAROCHIAL MD=9  
REF 0038 LOC 67 WIDTH 1 DK 1 COL 69

FILE TYPE USED: PAROCHIAL

0. NO  
1. YES  
9. MISSING

VAR 0039 FILE: PRIVATE MD=9  
REF 0039 LOC 68 WIDTH 1 DK 1 COL 70

FILE TYPE USED: PRIVATE

- 0. NO
- 1. YES
- 9. MISSING

VAR 0040 FILE: JAD MD=9  
REF 0040 LOC 69 WIDTH 1 DK 1 COL 71

FILE TYPE USED: JUVENILE AID DIVISION

- 0. NO
- 1. YES
- 9. MISSING

VAR 0041 FILE: SS MD=9  
REF 0041 LOC 70 WIDTH 1 DK 1 COL 72

FILE TYPE USED: SELECTIVE SERVICE

- 0. NO
- 1. YES
- 9. MISSING

VAR 0042 RELIGION OF OFFENDER MD=GF 9  
REF 0042 LOC 71 WIDTH 1 DK 1 COL 73

RELIGION OF OFFENDERS

(CONTINUED)

- 0. NOT AN OFFENDER
- 1. PROTESTANT
- 2. CATHOLIC
- 3. JEWISH
- 4. OTHER
- 5. NONE
- 9. NO INFORMATION

VAR 0043 CURFEW OFFENDER ONLY MD=9  
REF 0043 LOC 72 WIDTH 1 DK 1 COL 74

CURFEW OFFENDER ONLY

- 1. YES
- 2. NO
- 9. UNKNOWN

VAR 0044 INCOME LEVEL MD=9  
REF 0044 LOC 73 WIDTH 1 DK 1 COL 75

FAMILY INCOME LEVEL

- 1. INCOME LESS THAN \$4,000
- 2. INCOME \$4,001 - \$4,500
- 3. INCOME \$4,501 - \$5,783
- 4. INCOME \$5,784 - \$6,779
- 5. INCOME OVER \$6,779
- 9. UNKNOWN



VAR 0045 RACE MD=9  
REF 0045 LOC 74 WIDTH 1 DK 1 COL 76

RACE OF SUBJECT

- 0. WHITE
- 1. NON-WHITE
- 9. UNKNOWN

VAR 0046 SINGLE/MULTIPLE OFFENDER MD=9  
REF 0046 LOC 75 WIDTH 1 DK 1 COL 77

SUBJECT STATUS

- 0. NON-OFFENDER
- 1. SINGLE OFFENDER
- 2. MULTIPLE OFFENDER
- 9. UNKNOWN

VAR 0047 NUMBER OF OFFENSES MD=99  
REF 0047 LOC 76 WIDTH 2 DK 1 COL 78-79

NUMBER OF OFFENSES

ACTUAL NUMBER 1 TO 39 IS CODED

- 99. NONE, NOT AN OFFENDER

DECK IDENTIFICATION NUMBER IS '02' DK 2 COL 1- 2

VAR 0001 ICPSR STUDY NUMBER 7729 NO MISSING DATA CODES  
REF 0001 LOC 1 WIDTH 4 DK 2 COL 3- 6

ICPSR STUDY NUMBER

7729. THE ICPSR HAS ATTACHED THIS NUMBER AS A STUDY IDENTIFICATION NUMBER.

VAR 0002 VERSION 1 NO MISSING DATA CODES  
REF 0002 LOC 5 WIDTH 1 DK 2 COL 7

ICPSR VERSION NUMBER

- 1. THIS IS THE FIRST ICPSR VERSION OF THE STUDY.

VAR 0003 PART NUMBER 1 NO MISSING DATA CODES  
REF 0003 LOC 6 WIDTH 1 DK 2 COL 8

ICPSR PART NUMBER

- 1. THIS STUDY IS CONTAINED IN TWO FILES. FIRST, THE INDIVIDUAL FILE AND SECOND, THE OFFENSE FILE. THIS IS THE FIRST OF THE TWO FILES.

VAR 0004 IDENTIFICATION NUMBER NO MISSING DATA CODES  
REF 0004 LOC 7 WIDTH 5 DK 2 COL 9-13

SEQUENTIAL IDENTIFICATION NUMBER

A CASE IDENTIFICATION NUMBER HAS BEEN ATTACHED TO EVERY RECORD. THIS NUMBER UNIQUELY IDENTIFIES EACH RECORD IN THIS SURVEY.

VAR 0048      AVERAGE SCORE      MD=GE 99999  
 REF 0048      LOC 78 WIDTH 5      DK 2 COL 14-18  
    IMP DEC= 1

AVERAGE SERIOUSNESS SCORE

ACTUAL NUMBER 1 TO 2600 IS CODED

99999. MISSING

(CONTINUED)

GLOSSARY

THE INDEX USED IN THIS STUDY TO RATE THE SERIOUSNESS OF A CRIMINAL ACT WAS DEVELOPED AS FOLLOWS:

A SERIES OF ATTITUDE TESTS WHICH SCALED 141 DELINQUENT EVENTS WAS ADMINISTERED TO 748 UNIVERSITY STUDENTS, POLICE OFFICERS, AND JUVENILE COURT JUDGES. EVENTS WERE DESCRIBED OBJECTIVELY AND COMPLEX SINGLE EVENTS WERE DISSEMBLED INTO DISCRETE COMPONENTS AND PRESENTED IN VARIABLE COMBINATIONS; NO REFERENCE WAS MADE TO THE EVENTS' LEGAL TITLES. TEST RESULTS DETERMINED THE DIFFERENTIAL WEIGHTS OR SCORE VALUES ASSIGNED TO SINGLE EVENTS AND THEIR COMPONENTS, AND RESULTED IN THE SCORE CARD USED TO ASSESS SEVERITY OF A GIVEN DELINQUENT EVENT.

BECAUSE THE ORIGINAL STUDY CONCERNED OBJECTIVE HARM TO PERSONS AND PROPERTY AND POSED A NEW INDEX OF DELINQUENCY, SCORE CARDS DID NOT LEGALLY DEFINE OFFENSES AND INVOLVED ONLY THOSE EVENTS WHICH ENTAILLED INJURY TO A VICTIM AND/OR LOSS OR DAMAGE OF PROPERTY.

THE GAMUT OF DELINQUENCY FROM SUCH MINOR OFFENSES AS RUNNING AWAY FROM HOME TO THE PROFOUND CRIME OF HOMICIDE WAS CONSIDERED IN THE TESTING PROCEDURE UPON WHICH THE SCORING OF DELINQUENT EVENTS WAS BASED. SINCE THE PURPOSE OF THE PRESENT RESEARCH DIFFERS FROM THAT OF PREVIOUS INQUIRY, THE RESEARCHERS EXTENDED THEIR EVALUATION SYSTEM TO INCLUDE NON-INDEX EVENTS MORE RELEVANT TO THE COHORT. THIS EXTENSION IS BASED ON THE LOGARITHMIC RELATIONSHIP BETWEEN THE OGONTZ CENTER OF PENNSYLVANIA STATE UNIVERSITY'S RAW MAGNITUDE RATIO SCORES AND THE SET OF SCORES FINALLY DERIVED FOR THE DELINQUENCY INDEX. OFFENSE DESCRIPTIONS WERE THEN CATEGORIZED AS EITHER PERSONAL INJURY, THEFT, OR PROPERTY DAMAGE AND SCORED ACCORDING TO THE SCALING SYSTEM. HENCE, THE VARIOUS OFFENSE DESCRIPTIONS WERE USED AS SOURCE DATA TO GENERATE A SET OF VALUES. THE SET OF THESE VALUES WAS THEN ENTERED AS THE Y COMPONENT IN THE REGRESSION EQUATION FOR A POWER FUNCTION,  $Y = AX^{**}B$ , WHERE THE OGONTZ RAW SCORES PROVIDED THE X COMPONENT. THE RESULTANT RELATIONSHIP,  $\text{LOG } Y = 1.2117 + 0.9308 \text{ LOG } X$ , PERMITTED ASSIGNMENT OF AN EXTENDED SCORE TO OFFENSE TYPES NOT INVOLVING INJURY, THEFT, OR DAMAGE. BOTH SCORES WITH ELEMENTS OF INJURY, THEFT, OR DAMAGE AND EXTENDED VALUES WERE MULTIPLIED BY 100 TO ELIMINATE DECIMALS. AN EXPECTED SCORE WHICH IS ON THE SAME REGRESSION LINE AS THE VALUES ASSOCIATED WITH INDEX OFFENSES CAN BE COMPUTED BY USING THE OGONTZ RAW SCORES FOR NON-INDEX OFFENSES.

INTER-UNIVERSITY CONSORTIUM FOR  
POLITICAL AND SOCIAL RESEARCH

I  
C  
P  
S  
R

DELINQUENCY IN A BIRTH COHORT  
IN PHILADELPHIA PENNSYLVANIA,  
1945-1963: INDIVIDUAL FILE

DELINQUENCY IN A BIRTH COHORT  
IN PHILADELPHIA PENNSYLVANIA,  
1945-1963: OFFENSE FILE

(ICPSR 7729)

PART 2

Principal  
Investigator

Marvin W. Wolfgang,  
Robert Figlio, and  
Thorsten Sellin

First ICPSR Edition, 1981

DELINQUENCY IN A BIRTH COHORT IN PHILADELPHIA  
PENNSYLVANIA, 1945-1963: INDIVIDUAL FILE

DELINQUENCY IN A BIRTH COHORT IN PHILADELPHIA  
PENNSYLVANIA, 1945-1963: OFFENSE FILE

(ICPSR STUDY 7729)

PRINCIPAL INVESTIGATORS

MARVIN E. WOLFGANG,  
ROBERT FIGLIO, AND  
THORSTEN SELLIN

INTER-UNIVERSITY CONSORTIUM FOR POLITICAL  
AND SOCIAL RESEARCH

P.O. BOX 1248

ANN ARBOR, MICHIGAN 48106

ICPSR EDITION  
FIRST PRINTING, 1980

ACKNOWLEDGEMENT OF ASSISTANCE

ALL MANUSCRIPTS UTILIZING DATA MADE AVAILABLE THROUGH THE CONSORTIUM SHOULD ACKNOWLEDGE THAT FACT AS WELL AS IDENTIFY THE ORIGINAL COLLECTOR OF THE DATA. THE ICPSR COUNCIL URGES ALL USERS OF THE ICPSR DATA FACILITIES TO FOLLOW SOME ADAPTATION OF THIS STATEMENT WITH THE PARENTHESES INDICATING ITEMS TO BE FILLED IN APPROPRIATELY OR DELETED BY THE INDIVIDUAL USER.

THE DATA (AND TABULATIONS) UTILIZED IN THIS (PUBLICATION) WERE MADE AVAILABLE (IN PART) BY THE INTER-UNIVERSITY CONSORTIUM FOR POLITICAL AND SOCIAL RESEARCH. THE DATA FOR DELINQUENCY IN A BIRTH COHORT IN PHILADELPHIA PENNSYLVANIA, 1945-1963: INDIVIDUAL FILE AND DELIQUENCY IN A BIRTH COHORT IN PHILADELPHIA PENNSYLVANIA, 1945-1963: OFFENSE FILE WERE ORIGINALLY COLLECTED BY MARVIN E. WOLFGANG, ROBERT FIGLIO, AND THOPSTEN SELLIN. NEITHER THE COLLECTOR OF THE ORIGINAL DATA NOR THE CONSORTIUM BEAR ANY RESPONSIBILITY FOR THE ANALYSES OR INTERPRETATIONS PRESENTED HERE.

IN ORDER TO PROVIDE FUNDING AGENCIES WITH ESSENTIAL INFORMATION ABOUT THE USE OF ARCHIVAL RESOURCES AND TO FACILITATE THE EXCHANGE OF INFORMATION ABOUT ICPSR PARTICIPANTS' RESEARCH ACTIVITIES, EACH USER OF THE ICPSR DATA FACILITIES IS EXPECTED TO SEND TWO COPIES OF EACH COMPLETED MANUSCRIPT OR THESIS ABSTRACT TO THE CONSORTIUM. PLEASE INDICATE IN THE COVER LETTER WHICH DATA WERE USED.

TABLE OF CONTENTS

	PAGE NO.
INTRODUCTION	
STUDY DESCRIPTION	I
DATA COLLECTION PROCEDURES	II
FILE STRUCTURE	III
WEIGHTING INFORMATION	III
ICPSR PROCESSING INFORMATION	IV
CODEBOOK INFORMATION	V
VARIABLE DESCRIPTION LIST	VII
CODEBOOK: OFFENSE FILE	1
GLOSSARY	15

NCJRS

JAN 7 1985

ACQUISITIONS

## STUDY DESCRIPTION

THE DELIQUENCY IN A BIRTH COHORT STUDY WAS DIRECTED BY MARVIN F. WOLFGANG, ROBERT FIGLIO, AND THORNSTEN SELLIN. THE RESEARCH WAS SUPPORTED BY THE NATIONAL INSTITUTE OF MENTAL HEALTH.

THE STUDY IS AN ANALYSIS OF A COHORT OF 9,944 BOYS BORN IN 1945 WHO LIVED IN PHILADELPHIA, PENNSYLVANIA FROM AGES 10 THROUGH 18. DATA FOR THE ANALYSIS WERE COLLECTED FROM THE RECORDS OF THE PHILADELPHIA PUBLIC, PRIVATE, AND PAROCHIAL SCHOOLS, AND FROM THE RECORDS OF THE PHILADELPHIA POLICE DEPARTMENT'S JUVENILE AID DIVISION. THE LATTER DATA PERMITTED THE INVESTIGATORS TO DETERMINE WHICH MEMBERS OF THE COHORT HAD OFFICIAL CONTACTS WITH POLICE, AND TO TRACE VOLUME, FREQUENCY, AND CHARACTER OF THE SUBJECTS' DELINQUENT CAREERS. EXAMINING THESE CAREERS AS A STOCHASTIC PROCESS AND APPLYING WEIGHTS OF SEVERITY TO ACTS OF DELIQUENCY CONSTITUTES A MAJOR PART OF THIS RESEARCH.

MUCH OF THE RESEARCH CONSIDERED FOUR QUESTIONS: WHEN THE DELIQUENCY OF A COHORT BOY FIRST BROUGHT HIM TO THE ATTENTION OF THE POLICE; WHETHER HE DESISTED FROM OR PERSISTED IN COMMITTING FURTHER DELINQUENT ACTS; THE EXTENT OF HARM INFLICTED TO THE COMMUNITY BY HIS MISDEEDS; AND WHETHER THE SERIOUSNESS OF HIS DELINQUENT ACTIVITIES INCREASED OR DECREASED WITH AGE.

THE TWO FILES USED IN THIS STUDY WERE A INDIVIDUAL AND AN OFFENSE FILE. THE INDIVIDUAL FILE WAS COMPILED FROM SCHOOL RECORDS AND CONTAINS INFORMATION SUCH AS PARENTS' COUNTRY OF ORIGIN, I. Q. SCORES, AND NUMBER OF UNEXCUSED ABSENCES FOR ALL SUBJECTS IN THE STUDY. THE OFFENSE FILE CONTAINS INFORMATION CONCERNING SUBJECTS WHO WERE INVOLVED WITH THE POLICE AT LEAST ONCE WHEN AN OFFICIAL RECORDING OF THE ACT RESULTED. THE OFFENSE FILE CONTAINS A FULL DESCRIPTION OF THE CRIME INCIDENT, INCLUDING ASPECTS OF PHYSICAL INJURY, THEFT, OR PROPERTY DAMAGE, USE OF WEAPONS, AND RELEVANT INFORMATION ABOUT THE VICTIM. AS MANY AS 39 SEPARATE CRIMES WERE REPORTED PER SUBJECT.

ANALYSES OF THE STUDY RESULTS ARE PRESENTED IN:

MARVIN E. WOLFGANG, ROBERT FIGLIO, AND THORSTEN SELLIN,  
DELIQUENCY IN A BIRTH COHORT, CHICAGO, ILL.: UNIVERSITY OF  
CHICAGO PRESS, 1972.

## DATA COLLECTION PROCEDURES

THE COHORT IN THIS STUDY WAS LIMITED TO BOYS WHO WERE BORN IN 1945 AND LIVED IN PHILADELPHIA PENNSYLVANIA FROM THE AGES OF 10 THROUGH 18. THE UNIVERSE WAS LIMITED TO BOYS DUE TO THE RESEARCHERS' BELIEF THAT DELINQUENCY IS PREDOMINANTLY A MALE PHENOMENON.

THE REQUIREMENT THAT THE SUBJECTS MAINTAIN RESIDENCY IN PHILADELPHIA BETWEEN AGES 10 AND 18 ASSURED THE RESEARCHERS OF CONSISTENTLY RECORDED INFORMATION ABOUT SUBJECTS' CONTACTS WITH POLICE. THE COHORT THAT WAS PRESENT IN THE CITY HAD THE SAME URBAN ENVIRONMENT OVER A CRITICAL SPAN OF TIME, THE SAME GENERAL SET OF CULTURAL FORCES, THE SAME POLICE, SCHOOL, AND OTHER AGENCIES OF RESPONSE TO JUVENILE CONDUCT.

THREE SOURCES WERE USED TO GATHER DATA CONCERNING SUBJECTS AND TO VERIFY THEIR RESIDENCE IN PHILADELPHIA FROM AGES 10 THROUGH 18. THE CHIEF METHOD FOR OBTAINING THE COHORT WAS EXAMINATION OF PUBLIC, PAROCHIAL (CATHOLIC), AND PRIVATE (NON-PUBLIC, EXCLUDING CATHOLIC) SCHOOL RECORDS. SCRUTINY OF THE PUBLIC SCHOOL SYSTEM'S CENTRAL FILE REGARDING REGISTRATION, ATTRITION, AND CERTAIN SUBJECTIVE FACTORS FOR MALES BORN IN 1945 DETERMINED WHETHER BOYS WERE INCLUDED IN OR EXCLUDED FROM THE COHORT, OR WHETHER MORE INFORMATION WAS NEEDED PRIOR TO DESIGNATION. NEITHER PAROCHIAL NOR PRIVATE SCHOOLS, HOWEVER, MAINTAINED A CENTRAL FILING SYSTEM. INDIVIDUAL SCHOOLS WERE THEREFORE VISITED AND RELEVANT INFORMATION EXTRACTED FROM EACH OF THE VARIOUS FILING SYSTEMS. CONTENT OF RECORDS ALSO DIFFERED BETWEEN THE THREE SCHOOL SYSTEMS. CERTAIN "SOFT" DATA SUCH AS INFORMATION REGARDING EMOTIONAL MATURITY AND ACHIEVEMENT LEVELS WERE AVAILABLE ONLY IN PUBLIC SCHOOL RECORDS, AND ALL SCHOOL SYSTEMS USED VARIED INTELLIGENCE TESTS.

THE SECOND SOURCE OF INFORMATION WAS THE RECORDS OF THE JUVENILE AID DIVISION OF THE PHILADELPHIA POLICE DEPARTMENT. A MASTER RECORD FILE, MAINTAINED SINCE 1953, LISTED ALL JUVENILES WHO HAD POLICE CONTACT WHICH RESULTED IN A WRITTEN REPORT. THE RECORDS OF ALL BOYS BORN IN 1945 WERE PHOTOCOPIED AND, USING NAME, SPECIFIC DATE OF BIRTH, RACE, AND OTHER IDENTIFYING INFORMATION, MATCHED WITH A PUBLIC, PRIVATE, OR PAROCHIAL SCHOOL RECORD WHEN POSSIBLE.

SELECTIVE SERVICE RECORDS PROVIDED THE THIRD SOURCE OF INFORMATION. BOYS' NAMES WERE CHECKED AGAINST THESE RECORDS TO CONFIRM THEIR PRESENCE IN PHILADELPHIA AT AGE 18, REGARDLESS OF WHETHER THEY GRADUATED PRIOR TO AGE 18 OR BECAME EMPLOYED AT AGE 16 AFTER REACHING THE

END OF COMPULSORY EDUCATION. FOR A COMPLETE EXPLANATION OF THE DATA COLLECTION PROCEDURE AND TYPE OF DATA OBTAINED SEE DELINQUENCY IN A BIRTH COHORT BY MARVIN WOLFGANG (CHAPTERS 1-3).

## FILE STRUCTURE

THE DELINQUENCY IN A BIRTH COHORT IN PHILADELPHIA, PENNSYLVANIA, 1945-1963 INDIVIDUAL AND OFFENSE FILES ARE AVAILABLE FROM ICPSR IN TWO FORMATS, A CARD IMAGE FILE AND AN OSIRIS DATASET. THE CARD IMAGE FILE CONTAINS 2 DECKS PER CASE IN A FORMAT BASED ON 80 COLUMN PUNCHED CARDS FOR BOTH FILES. THE DATA ARE SORTED BY SUBJECT WITH ALL DECKS FOR A CASE COMBINED TOGETHER IN ASCENDING ORDER.

THE OSIRIS DICTIONARY GIVES THE FORMAT AND OTHER INFORMATION FOR EACH VARIABLE IN THE OSIRIS DATA FILE. THE DICTIONARY OR DICTIONARY-CODEBOOK FILE IS USED IN CONJUNCTION WITH THE OSIRIS SOFTWARE PACKAGE. THE OSIRIS DATA FILE FOR THE INDIVIDUAL FILE IS CONSTRUCTED WITH A SINGLE RECORD OF 86 COLUMNS FOR EACH CASE. THE OFFENSE FILE IS CONSTRUCTED WITH A RECORD OF 98 COLUMNS FOR EACH CASE. THERE ARE 48 VARIABLES ON 9,944 CASES FOR THE INDIVIDUAL FILE AND 43 VARIABLES ON 10,214 CASES FOR THE OFFENSE FILE.

THE OSIRIS DATA FILE CAN BE ACCESSED THROUGH SOFTWARE PACKAGES OR PROGRAMS WHICH DO NOT USE THE OSIRIS DICTIONARY BY SPECIFYING THE TAPE LOCATIONS OF THE DESIRED VARIABLES. THESE TAPE LOCATIONS ARE GIVEN IN THE OSIRIS DICTIONARY-CODEBOOK.

## WEIGHTING INFORMATION

IN PRIOR RESEARCH THE PRINCIPAL INVESTIGATORS DEVELOPED A SYSTEM FOR ASSESSING THE DEGREE OF SOCIAL INJURY CAUSED BY A DELINQUENT EVENT. USING THIS SYSTEM THEY WERE ABLE TO ASSIGN A SCORE VALUE TO AN EVENT, DEPENDING ON WEIGHTS GIVEN TO CERTAIN OF ITS ELEMENTS. FOR INSTANCE, A SIMPLE PHYSICAL ASSAULT RESULTING ONLY IN AN INJURY REQUIRING TEMPORARY MEDICAL ATTENTION WOULD RECEIVE A SCORE OF 2, WHILE THE COMPLEX EVENT OF AN ASSAULT WHICH ENTAILED THE HOSPITALIZATION OF TWO VICTIMS AFTER THEIR BEING INTIMIDATED BY A DANGEROUS WEAPON, BEATEN, AND HAVING HAD THEIR WALLETS STOLEN MIGHT RECEIVE A SCORE OF 23 OR MORE DEPENDING ON THE

AMOUNT OF CURRENCY TAKEN. IN TRADITIONAL CRIMINAL STATISTICS, THESE TWO OFFENSES WOULD EACH BE GIVEN A SCORE OF 1 AND SEPARATED BY ASSIGNING THE MILDER ASSAULT CASE TO THE CLASS OF SIMPLE ASSAULT AND THE MORE SERIOUS ONE TO THAT OF AGGRAVATED ASSAULT BASED ON THE DEFINITIONS IN THE CRIMINAL CODE. WITH THE INVESTIGATORS' SYSTEM, THE LATTER EVENT WOULD FALL INTO A CLASS OF OFFENSES CAUSING PHYSICAL INJURY TO A VICTIM AND NOT MERELY BE COUNTED AS TWO AGGRAVATED ASSAULTS. FOR A BRIEF EXPLANATION OF THE DEVELOPMENT AND UTILIZATION OF THE WEIGHTING SYSTEM IN THE PRESENT STUDY SEE THE GLOSSARY.

ICPSR PROCESSING INFORMATION

THE STUDY WAS PROCESSED ACCORDING TO THE STANDARD ICPSR PROCESSING PROCEDURES. THE DATA WERE CHECKED FOR ILLEGAL OR INCONSISTENT CODE VALUES WHICH, WHEN FOUND, WERE RECODED TO OSIRIS MISSING DATA VALUES. NO CONSISTENCY CHECKS WERE PERFORMED. STATEMENTS BRACKETED IN "<" AND ">" SIGNS IN THE BODY OF THE CODEBOOK WERE ADDED BY THE PROCESSORS FOR EXPLANATORY PURPOSES. THE ARCHIVAL PROCESSING OF THIS STUDY WAS DONE BY DAVID SCHREIBER, WITH ASSISTANCE FROM JOYCE HAMRICK.

CODEBOOK INFORMATION

THE EXAMPLE BELOW IS A REPRODUCTION OF INFORMATION APPEARING IN THE MACHINE-READABLE CODEBOOK FOR A TYPICAL VARIABLE. THE NUMBERS IN BRACKETS DO NOT APPEAR BUT ARE REFERENCES TO THE DESCRIPTIONS WHICH FOLLOW THIS EXAMPLE.

[1] VAR 0018                      [2] RETARDED                                      [3] MD=9  
 REF 0018                      [4] LCC 31      WIDTH 1    [5] DK - COL --

[6] RETARDED CLASS

[7] -----

[8] -----

[9] [10]  
 0. NO  
 1. YES  
 2. UNKNOWN

- [ 1] INDICATES THE VARIABLE AND REFERENCE NUMBERS. A VARIABLE AND REFERENCE NUMBER ARE ASSIGNED TO EACH ITEM IN THE STUDY. IN THIS CODEBOOK WHICH DOCUMENTS THE ARCHIVED DATASET THESE NUMBERS ARE IDENTICAL. SHOULD THE DATA BE DISSMINATED IN A DIFFERENT STRUCTURE, NEW VARIABLE NUMBERS MAY BE ASSIGNED OR CREATED. THE REFERENCE NUMBER WOULD REMAIN UNCHANGED AND CORRESPOND TO THOSE IN THIS CODEBOOK.
- [ 2] INDICATES THE ABBREVIATED (24 CHARACTER MAXIMUM) VARIABLE LABEL USED WITHIN OSIRIS TO IDENTIFY EACH VARIABLE. AN EXPANDED VERSION CAN BE FOUND IN THE VARIABLE DESCRIPTION LIST.
- [ 3] INDICATES THE DESIGNATION OF MISSING DATA. IN

THIS EXAMPLE, CODE VALUES EQUAL TO 9 ARE MISSING DATA (MD=9). ALTERNATIVE STATEMENTS FOR OTHER VARIABLES ARE "MD=0 OR GE 9", "MD GE 9", OR "NO MISSING DATA CODES". SOME ANALYSIS SOFTWARE PACKAGES (INCLUDING THE ICPSR-SUPPORTFC PACKAGE) REQUIRE THAT CERTAIN TYPES OF DATA WHICH THE USER DESIRES TO BE EXCLUDED FROM ANALYSIS BE DESIGNATED AS "MISSING DATA" E.G., INAPPROPRIATE, UNASCERTAINED, UNASCERTAINABLE, OR AMBIGUOUS DATA CATEGORIES. ALTHOUGH THIS VALUE IS DEFINED AS WITHIN THE MISSING DATA CATEGORY, THIS DOES NOT MEAN THAT USERS SHOULD NOT OR CANNOT USE THIS CODE VALUE IN A SUBSTANTIVE ROLE IF THEY SO DESIRE.

- [4] INDICATES THE SEQUENTIAL LOCATION AND WIDTH OF THIS VARIABLE WITHIN THE RECORD WHEN THE DATA ARE STORED ON MAGNETIC TAPE. IN THIS EXAMPLE THE VARIABLE NAMED "RETARDED" IS ONE COLUMN WIDE AND LOCATED IN THE 31ST COLUMN WITHIN THE RECORD.
- [5] INDICATES THE LOCATION BY DECK AND COLUMN(S) OF THIS VARIABLE WHEN THE DATA ARE STORED ON CARDS OR IN CARD IMAGE FORMAT.
- [6] INDICATES THE FULL TEXT OF THE VARIABLE DESCRIPTION SUPPLIED BY THE ORIGINAL COLLECTOR OF THE DATA. THE NUMBERS AND LETTERS THAT MAY APPEAR AT THE BEGINNING ARE QUESTION NUMBERS FROM THE SURVEY FORMS.
- [7] INDICATES AN ADDITIONAL COMMENT OR EXPLANATION APPENDED TO THE VARIABLE DESCRIPTION.
- [8] A VARIABLE WHICH HAS A FOOTNOTE ASSOCIATED WITH IT IS DENOTED BY THE MESSAGE, "SEE NOTE(S) X" WHERE X IS THE NUMBER OF THE FOOTNOTE REFERENCED.
- [9] INDICATES THE CODE VALUES OCCURRING IN THE DATA FOR THIS VARIABLE.
- [10] INDICATES THE TEXTUAL DEFINITIONS OF THE CODES.

## VARIABLE DESCRIPTION LIST FOR OFFENSE FILE

## ICPSR PROCESSING VARIABLES

- 1. ICPSR STUDY NUMBER - 7729
- 2. ICPSR VERSION NUMBER - 1
- 3. ICPSR PART NUMBER - 2
- 4. SEQUENTIAL IDENTIFICATION NUMBER

## INFORMATION ON OFFENSE

- 5. TOTAL NUMBER OF OFFENSES BY OFFENDER
- 6. RANK NUMBER OF HIS OFFENSE
- 7. THE PHILADELPHIA CRIME CODE
- 8. DISPOSITION OF THIS OFFENSE
- 9. YEAR OF THIS OFFENSE
- 10. MONTH OF THIS OFFENSE
- 11. DAY OF THIS OFFENSE
- 12. SERIOUSNESS SCORE

## OFFENDER DEMOGRAPHICS

- 13. OFFENDER AGE
- 14. RACE OF OFFENDER
- 15. NUMBER OF JUVENILE OFFENDERS
- 16. AVERAGE AGE OF OFFENDER
- 17. NUMBER OF WHITE JUVENILE OFFENDERS PRESENT
- 18. NUMBER OF NON-WHITE JUVENILE OFFENDERS PRESENT
- 19. NUMBER OF MALE JUVENILE OFFENDERS PRESENT
- 20. NUMBER OF FEMALE JUVENILE OFFENDERS PRESENT

## VICTIM DEMOGRAPHICS

- 21. AVERAGE AGE OF VICTIMS OR AGE OF SINGLE VICTIM
- 22. NUMBER OF WHITE VICTIMS
- 23. NUMBER OF NON-WHITE VICTIMS
- 24. NUMBER OF MALE VICTIMS
- 25. NUMBER OF FEMALE VICTIMS
- 26. NUMBER OF DEATHS
- 27. NUMBER OF PERSONS HOSPITALIZED
- 28. NUMBER OF PERSONS TREATED FOR INJURY AND DISCHARGED
- 29. NUMBER OF PERSONS REQUIRING NO HOSPITALIZATION



X

VARIABLE DESCRIPTION LIST FOR OFFENSE FILE

CRIME DEMOGRAPHICS

- 30. DOLLAR AMOUNT OF THEFT, ACTUAL CASH + DOLLAR VALUE
- 31. DAMAGE IN DOLLARS
- 32. ANY PHYSICAL INJURY
- 33. ANY THEFT
- 34. ANY DAMAGE
- 35. WEAPONS PRESENT DURING OFFENSE
- 36. VICTIMIZATION TYPE IN THIS OFFENSE

OFFENDER INFORMATION

- 37. NUMBER OF ADULT OFFENDERS
- 38. INCOME GROUP OF OFFENDER
- 39. OFFENSE TYPE OF THIS OFFENSE
- 40. OFFENDER IS A SINGLE OR MULTIPLE OFFENDER
- 41. OFFENSE CLASS A
- 42. OFFENSE CLASS B
- 43. AGE, IN MONTHS FROM BIRTH, AT TIME OF OFFENSE

DECK IDENTIFICATION NUMBER IS '01'

DK 1 COL 1- 2

VAR 0001 ICPSR STUDY NUMBER 7729 NO MISSING DATA CODES  
 REF 0001 LOC 1 WIDTH 4 DK 1 COL 3- 6

ICPSR STUDY NUMBER

7729. THE ICPSR HAS ATTACHED THIS NUMBER AS A STUDY IDENTIFICATION NUMBER.

VAR 0002 VERSION 1 NO MISSING DATA CODES  
 REF 0002 LOC 5 WIDTH 1 DK 1 COL 7

ICPSR VERSION NUMBER

1. THIS IS THE FIRST ICPSR VERSION OF THE STUDY.

VAR 0003 PART NUMBER 2 NO MISSING DATA CODES  
 REF 0003 LOC 6 WIDTH 1 DK 1 COL 8

ICPSR PART NUMBER

2. THIS STUDY IS CONTAINED IN TWO FILES. FIRST, THE INDIVIDUAL FILE AND SECOND, THE OFFENSE FILE. THIS IS THE SECOND OF THE TWO FILES.

VAR 0004 IDENTIFICATION NUMBER NO MISSING DATA CODES  
 REF 0004 LOC 7 WIDTH 5 DK 1 COL 9-13

SEQUENTIAL IDENTIFICATION NUMBER

A CASE IDENTIFICATION NUMBER HAS BEEN ATTACHED TO EVERY

(CONTINUED)

RECORD. THIS NUMBER CORRESPONDS TO THE CASE IDENTIFICATION NUMBER IN THE INDIVIDUAL FILE.

VAR 0005 TOTAL NUMBER OF OFFENSES MD=99  
REF 0005 LOC 12 WIDTH 2 DK 1 COL 14-15

TOTAL NUMBER OF OFFENSES BY OFFENDER

ACTUAL NUMBER 1 TO 39 IS CODED

99. MISSING

VAR 0006 RANK NUMBER OF OFFENSES MD=99  
REF 0006 LOC 14 WIDTH 2 DK 1 COL 16-17

RANK NUMBER OF THIS OFFENSE

ACTUAL RANK OF 1 TO 39 IS CODED

99. MISSING

VAR 0007 PHILADELPHIA CRIME CODE MD=9999  
REF 0007 LOC 16 WIDTH 4 DK 1 COL 18-21

THE PHILADELPHIA CRIME CODE

A CODE OF 111 TO 3615 IS CODED

9999. MISSING

VAR 0008 DISPOSITION MD=99  
REF 0008 LOC 20 WIDTH 2 DK 1 COL 22-23

DISPOSITION OF THIS OFFENSE

- 00. REMEDIAL
- 01. ARREST (NO FURTHER INFORMATION)
- 02. YOUTH STUDY CENTER (NO FURTHER INFORMATION)
- 03. ADJUSTED
- 04. DISCHARGED
- 05. INSTITUTION
- 06. FINE AND/OR RESTITUTION
- 07. PROBATION
- 80. PROJECT OFFENSE
- 99. UNKNOWN

VAR 0009 YEAR OF OFFENSE MD=99  
REF 0009 LOC 22 WIDTH 2 DK 1 COL 24-25

YEAR OF THIS OFFENSE

- 45. 1945
- 51. 1951
- .
- .
- 63. 1963
- 99. MISSING

VAR 0010 MONTH OF OFFENSE MD=99  
REF 0010 LOC 24 WIDTH 2 DK 1 COL 26-27

MONTH OF THIS OFFENSE

- 01. JANUARY
- 02. FEBRUARY

(CONTINUED)

- 03. MARCH
- 04. APRIL
- 05. MAY
- 06. JUNE
- 07. JULY
- 08. AUGUST
- 09. SEPTEMBER
- 10. OCTOBER
- 11. NOVEMBER
- 12. DECEMBER
- 99. MISSING

VAR 0011 DAY OF OFFENSE MD=99  
 REF 0011 LOC 26 WIDTH 2 DK 1 COL 28-29

DAY OF THIS OFFENSE

- 01. FIRST DAY OF MONTH
- .
- .
- 31. THIRTY-FIRST DAY OF MONTH
- 99. MISSING

VAR 0012 SERIOUSNESS SCORE MD=9999  
 REF 0012 LOC 28 WIDTH 4 DK 1 COL 30-33

SERIOUSNESS SCORE

ACTUAL SCORE 1 TO 4400 IS CODED

- 9999. MISSING

VAR 0013 AGE OF OFFENDER MD=99  
 REF 0013 LOC 32 WIDTH 2 DK 1 COL 34-35

OFFENDER AGE

- 06. SIX YEARS OF AGE
- .
- .
- 18. EIGHTEEN YEARS OF AGE
- 99. MISSING

VAR 0014 RACE OF OFFENDER MD=9  
 REF 0014 LOC 34 WIDTH 1 DK 1 COL 36

RACE OF OFFENDER

- 0. WHITE
- 1. NEGRO
- 2. PUERTO RICAN
- 3. ORIENTAL
- 9. MISSING

VAR 0015 NO. JUVENILE OFFENDERS MD=99 OR GE 98  
 REF 0015 LOC 35 WIDTH 2 DK 1 COL 37-38

NUMBER OF JUVENILE OFFENDERS

- 01. ONE JUVENILE OFFENDER
- .
- .
- 89. EIGHTY-NINE OFFENDERS
- 90. LESS THAN FIVE
- 91. FIVE TO TEN OFFENDERS
- 92. ELEVEN TO TWENTY

(CONTINUED)

93. TWENTY-ONE TO THIRTY  
 94. THIRTY-ONE TO FORTY  
 95. MORE THAN FORTY

98. MISSING  
 99. UNKNOWN

.....  
 VAR 0016 AVERAGE AGE OF JUV. OFF. MD=99 OR GE 98  
 REF 0016 LOC 37 WIDTH 2 DK 1 COL 39-40

AVERAGE AGE OF OFFENDER

08. AVERAGE AGE IS EIGHT

17. AVERAGE AGE IS SEVENTEEN

98. MISSING  
 99. UNKNOWN

.....  
 VAR 0017 NO. WHITE JUV. OFFENDERS MD=99 OR GE 98  
 REF 0017 LOC 39 WIDTH 2 DK 1 COL 41-42

NUMBER OF WHITE JUVENILE OFFENDERS PRESENT DURING CRIME

ACTUAL NUMBER 0 TO 33 IS CODED

98. MISSING  
 99. UNKNOWN

.....  
 VAR 0018 NO. BLACK JUV. OFFENDERS MD=99 OR GE 98  
 REF 0018 LOC 41 WIDTH 2 DK 1 COL 43-44

NUMBER OF NON-WHITE JUVENILE OFFENDERS PRESENT DURING CRIME

(CONTINUED)

ACTUAL NUMBER 0 TO 91 IS CODED

98. MISSING  
 99. UNKNOWN

.....  
 VAR 0019 NO. MALE JUV. OFFENDERS MD=99 OR GE 98  
 REF 0019 LOC 43 WIDTH 2 DK 1 COL 45-46

NUMBER OF MALE JUVENILE OFFENDERS PRESENT DURING CRIME

ACTUAL NUMBER 1 TO 91 IS CODED

98. MISSING  
 99. UNKNOWN

.....  
 VAR 0020 NO. FEMALE JUV OFFENDERS MD=99 OR GE 98  
 REF 0020 LOC 45 WIDTH 2 DK 1 COL 47-48

NUMBER OF FEMALE JUVENILE OFFENDERS PRESENT DURING CRIME

ACTUAL NUMBER 0 TO 5 IS CODED

98. MISSING  
 99. UNKNOWN

.....  
 VAR 0021 AVERAGE AGE OF VICTIM MD=99 OR GE 98  
 REF 0021 LOC 47 WIDTH 2 DK 1 COL 49-50

AVERAGE AGE OF VICTIMS OR AGE OF SINGLE VICTIM

ACTUAL NUMBER 1 TO 85 IS CODED

(CONTINUED)

- 00. NO VICTIMS
- 98. MISSING
- 99. UNKNOWN

.....

VAR 0022	NUMBER WHITE VICTIMS	MD=99 OR GE 98
REF 0022	LOC 49 WIDTH 2	DK 1 COL 51-52

NUMBER OF WHITE VICTIMS

ACTUAL NUMBER 0 TO 13 IS CODED

- 98. MISSING
- 99. UNKNOWN

.....

VAR 0023	NUMBER NON-WHITE VICTIMS	MD=99 OR GE 98
REF 0023	LOC 51 WIDTH 2	DK 1 COL 53-54

NUMBER OF NON-WHITE VICTIMS

ACTUAL NUMBER 0 TO 19 IS CODED

- 98. MISSING
- 99. UNKNOWN

.....

VAR 0024	NUMBER MALE VICTIMS	MD=99 OR GE 98
REF 0024	LOC 53 WIDTH 2	DK 1 COL 55-56

NUMBER OF MALE VICTIMS

ACTUAL NUMBER 0 TO 19 IS CODED

(CONTINUED)

- 98. MISSING
- 99. UNKNOWN

.....

VAR 0025	NUMBER FEMALE VICTIMS	MD=99 OR GE 98
REF 0025	LOC 55 WIDTH 2	DK 1 COL 57-58

NUMBER OF FEMALE VICTIMS

ACTUAL NUMBER 0 TO 10 IS CODED

- 98. MISSING
- 99. UNKNOWN

.....

VAR 0026	NUMBER OF DEATHS	MD=99 OR GE 98
REF 0026	LOC 57 WIDTH 2	DK 1 COL 59-60

NUMBER OF DEATHS

ACTUAL NUMBER 0 TO 1 IS CODED

- 98. MISSING
- 99. UNKNOWN

.....

VAR 0027	NUMBER HOSPITALIZED	MD=99 OR GE 98
REF 0027	LOC 59 WIDTH 2	DK 1 COL 61-62

NUMBER OF PERSONS HOSPITALIZED

ACTUAL NUMBER 0 TO 3 IS CODED

- 98. MISSING

(CONTINUED)

99. UNKNOWN

.....

VAR 0028	NO. TREATED & DISCHARGED	MD=99 OR GE 98
REF 0028	LOC 61 WIDTH 2	DK 1 COL 63-64

NUMBER OF PERSONS TREATED FOR INJURY AND DISCHARGED

-----

- 00. NONE
- .
- .
- 05. FIVE PERSONS
- .
- 98. MISSING
- 99. UNKNOWN

.....

VAR 0029	NUMBER WITH MINOR INJURY	MD=99 OR GE 98
REF 0029	LOC 63 WIDTH 2	DK 1 COL 65-66

NUMBER OF PERSONS REQUIRING NO HOSPITALIZATION (NOT INCLUDING AGE 23-25)

-----

ACTUAL NUMBER 0 TO 42 IS CODED

- 98. MISSING
- 99. UNKNOWN

.....

VAR 0030	THEFT IN DOLLARS	MD=99998
REF 0030	LOC 65 WIDTH 5	DK 1 COL 67-71

DOLLAR AMOUNT OF THEFT, INCLUDES BOTH ACTUAL CASH (WHEN APPROPRIATE) PLUS ESTIMATED DOLLAR VALUE OF ITEMS ROBBED OR STOLEN

-----

(CONTINUED)

ACTUAL DOLLAR AMOUNT 1 TO 30,000 CODED

99998. UNKNOWN

.....

VAR 0031	DAMAGE IN DOLLARS	MD=99998
REF 0031	LOC 70 WIDTH 5	DK 1 COL 72-76

DAMAGE IN DOLLARS

-----

ACTUAL DOLLAR AMOUNT 1 TO 10,000 CODED

99998. UNKNOWN

.....

VAR 0032	ANY PHYSICAL INJURY	MD=9
REF 0032	LOC 75 WIDTH 1	DK 1 COL 77

ANY PHYSICAL INJURY

-----

- 0. NO INJURY
- 1. YES
- 2. ATTEMPTED RAPE
- 3. ATTEMPTED ROBBERY
- 4. ATTEMPTED MURDER
- 9. UNKNOWN

.....

VAR 0033	ANY THEFT	MD=9
REF 0033	LOC 76 WIDTH 1	DK 1 COL 78

ANY THEFT

-----

- 0. NO THEFT
- 1. YES
- 2. ATTEMPTED BURGLARY
- 3. ATTEMPTED LARCENY

(CONTINUED)

4. ATTEMPTED AUTO THEFT

9. UNKNOWN

VAR 0034 ANY DAMAGE MD=9  
REF 0034 LOC 77 WIDTH 1 DK 1 COL 79

ANY DAMAGE

- 0. NO
- 1. YES
- 9. UNKNOWN

VAR 0035 WEAPONS PRESENT MD=9 OR GE 8  
REF 0035 LOC 78 WIDTH 1 DK 1 COL 80

WEAPONS PRESENT DURING OFFENSE

- 0. NONE
- 1. KNIFE
- 2. BLUNT INSTRUMENT
- 3. GUN
- 4. OTHER
- 8. MISSING
- 9. UNKNOWN

DECK IDENTIFICATION NUMBER IS '02' DK 2 COL 1- 2

VAR 0001 ICPSR STUDY NUMBER 7729 NO MISSING DATA CODES  
REF 0001 LOC 1 WIDTH 4 DK 2 COL 3- 6

ICPSR STUDY NUMBER

(CONTINUED)

7729. THE ICPSR HAS ATTACHED THIS NUMBER AS A STUDY IDENTIFICATION NUMBER.

VAR 0002 VERSION 1 NO MISSING DATA CODES  
REF 0002 LOC 5 WIDTH 1 DK 2 COL 7

ICPSR VERSION NUMBER

- 1. THIS IS THE FIRST ICPSR VERSION OF THE STUDY.

VAR 0003 PART NUMBER 2 NO MISSING DATA CODES  
REF 0003 LOC 6 WIDTH 1 DK 2 COL 8

ICPSR PART NUMBER

- 2. THIS STUDY IS CONTAINED IN TWO FILES. FIRST, THE INDIVIDUAL FILE AND SECOND, THE OFFENSE FILE. THIS IS THE SECOND OF THE TWO FILES.

VAR 0004 IDENTIFICATION NUMBER NO MISSING DATA CODES  
REF 0004 LOC 7 WIDTH 5 DK 2 COL 9-13

SEQUENTIAL IDENTIFICATION NUMBER

A CASE IDENTIFICATION NUMBER HAS BEEN ATTACHED TO EVERY RECORD. THIS NUMBER CORRESPONDS TO THE CASE IDENTIFICATION NUMBER IN THE INDIVIDUAL FILE.

VAR 0036 VICTIMIZATION TYPE MD=9 OR GE 8  
REF 0036 LOC 79 WIDTH 1 DK 2 COL 14

VICTIMIZATION TYPE IN THIS OFFENSE

- 0. NO VICTIMIZATION TYPE
- 1. PRIMARY (NOT FACE-TO-FACE)
- 2. SECONDARY
- 3. TERTIARY
- 4. MUTUAL
- 5. FACE-TO-FACE
- 8. MISSING
- 9. UNKNOWN

VAR 0037 NO. OF ADULT OFFENDERS MD=99  
REF 0037 LOC 80 WIDTH 2 DK 2 COL 15-16

NUMBER OF ADULT OFFENDERS

- 00. NONE
- .
- .
- .
- 09. NINE OFFENDERS
- 99. MISSING

VAR 0038 INCOME GROUP OF OFFENDER MD=9  
REF 0038 LOC 82 WIDTH 1 DK 2 COL 17

INCOME GROUP OF OFFENDER, DERIVED FROM MEDIAN INCOME OF  
CENSUS TRACT WHERE OFFENDER LIVED. BASED ON 1960 CENSUS  
DATA.

- 1. INCOME BELOW \$4,000
- 2. INCOME \$4,001-\$4,500
- 3. INCOME \$4,501-\$5,783

(CONTINUED)

- 4. INCOME \$5,784-\$6,790
- 5. INCOME ABOVE \$6,790
- 9. MISSING

VAR 0039 OFFENSE TYPE MD=9  
REF 0039 LOC 83 WIDTH 1 DK 2 COL 18

OFFENSE TYPE OF THIS OFFENSE

- 1. NON-INDEX OFFENSE
- 2. INDFX OFFENSE
- 3. COMBINED
- 9. MISSING

VAR 0040 SINGLE/MULTIPLE OFFENDER MD=9  
REF 0040 LOC 84 WIDTH 1 DK 2 COL 19

OFFENDER IS A SINGLE OR MULTIPLE OFFENDER

- 1. SINGLE
- 2. MULTIPLE
- 9. MISSING

VAR 0041 OFFENSE TYPE CLASS A MD=9  
REF 0041 LOC 85 WIDTH 1 DK 2 COL 20

OFFENSE CLASS A

PRECISE MEANING UNKNOWN

- 0. NON-CLUSTER SCORE
- 1. CLUSTER SCORED



(CONTINUED)

2. ATTEMPT
3. CURFEW
9. UNKNOWN

.....

VAR 0042	OFFENSE TYPE CLASS B			MD=9
REF 0042	LOC 86 WIDTH 1	DK	2 COL 21	

OFFENSE CLASS B  
-----

PRECISE MEANING UNKNOWN

0. NON-INDEX
1. INDEX
2. ATTEMPT
3. CURFEW
9. UNKNOWN

.....

VAR 0043	CRIMETIME AGE IN MONTHS			MD=99990
REF 0043	LOC 87 WIDTH 5	DK	2 COL 22-26	
		IMP DEC=	1	

AGE IN MONTHS FROM BIRTH AT TIME OF OFFENSE, IF KNOWN OR AT  
TIME OF ARREST OR INITIAL DISPOSITION  
-----

ACTUAL NUMBER 78 TO 225 CODED

999. MISSING

(CONTINUED)

## GLOSSARY

THE INDEX USED IN THIS STUDY TO RATE THE SERIOUSNESS OF A CRIMINAL ACT WAS DEVELOPED AS FOLLOWS:

A SERIES OF ATTITUDE TESTS WHICH SCALED 141 DELINQUENT EVENTS WAS ADMINISTERED TO 748 UNIVERSITY STUDENTS, POLICE OFFICERS, AND JUVENILE COURT JUDGES. EVENTS WERE DESCRIBED OBJECTIVELY AND COMPLEX SINGLE EVENTS WERE DISSEMBLED INTO DISCRETE COMPONENTS AND PRESENTED IN VARIABLE COMBINATIONS; NO REFERENCE WAS MADE TO THE EVENTS' LEGAL TITLES. TEST RESULTS DETERMINED THE DIFFERENTIAL WEIGHTS OR SCORE VALUES ASSIGNED TO SINGLE EVENTS AND THEIR COMPONENTS, AND RESULTED IN THE SCORE CARD USED TO ASSESS SEVERITY OF A GIVEN DELINQUENT EVENT.

BECAUSE THE ORIGINAL STUDY CONCERNED OBJECTIVE HARM TO PERSONS AND PROPERTY AND POSTED A NEW INDEX OF DELINQUENCY, SCORE CARDS DID NOT LEGALLY DEFINE OFFENSES AND INVOLVED ONLY THOSE EVENTS WHICH ENTAILED INJURY TO A VICTIM AND/OR LOSS OR DAMAGE OF PROPERTY.

THE GAMUT OF DELINQUENCY FROM SUCH MINOR OFFENSES AS RUNNING AWAY FROM HOME TO THE PROFOUND CRIME OF HOMICIDE WAS CONSIDERED IN THE TESTING PROCEDURE UPON WHICH THE SCORING OF DELINQUENT EVENTS WAS BASED. SINCE THE PURPOSE OF THE PRESENT RESEARCH DIFFERS FROM THAT OF PREVIOUS INQUIRY, THE RESEARCHERS EXTENDED THEIR EVALUATION SYSTEM TO INCLUDE NON-INDEX EVENTS MORE RELEVANT TO THE COHORT. THIS EXTENSION IS BASED ON THE LOGARITHMIC RELATIONSHIP BETWEEN THE OGONTZ CENTER OF PENNSYLVANIA STATE UNIVERSITY'S RAW MAGNITUDE RATIO SCORES AND THE SET OF SCORES FINALLY DERIVED FOR THE DELINQUENCY INDEX. OFFENSE DESCRIPTIONS WERE THEN CATEGORIZED AS EITHER PERSONAL INJURY, THEFT, OR PROPERTY DAMAGE AND SCORED ACCORDING TO THE SCALING SYSTEM. HENCE, THE VARIOUS OFFENSE DESCRIPTIONS WERE USED AS SOURCE DATA TO GENERATE A SET OF VALUES. THE SET OF THESE VALUES WAS THEN ENTERED AS THE Y COMPONENT IN THE REGRESSION EQUATION FOR A POWER FUNCTION,  $Y = AX^{*B}$ , WHERE THE OGONTZ RAW SCORES PROVIDED THE X COMPONENT. THE RESULTANT RELATIONSHIP,  $\text{LOG } Y = 1.2117 + 0.9308 \text{ LOG } X$ , PERMITTED ASSIGNMENT OF AN EXTENDED SCORE TO OFFENSE TYPES NOT INVOLVING INJURY, THEFT, OR DAMAGE. BOTH SCORES WITH ELEMENTS OF INJURY, THEFT, OR DAMAGE AND EXTENDED VALUES WERE MULTIPLIED BY 100 TO ELIMINATE DECIMALS. AN EXPECTED SCORE WHICH IS ON THE SAME REGRESSION LINE AS THE VALUES ASSOCIATED WITH INDEX OFFENSES CAN BE COMPUTED BY USING THE OGONTZ RAW SCORES FOR NON-INDEX OFFENSES

**END**